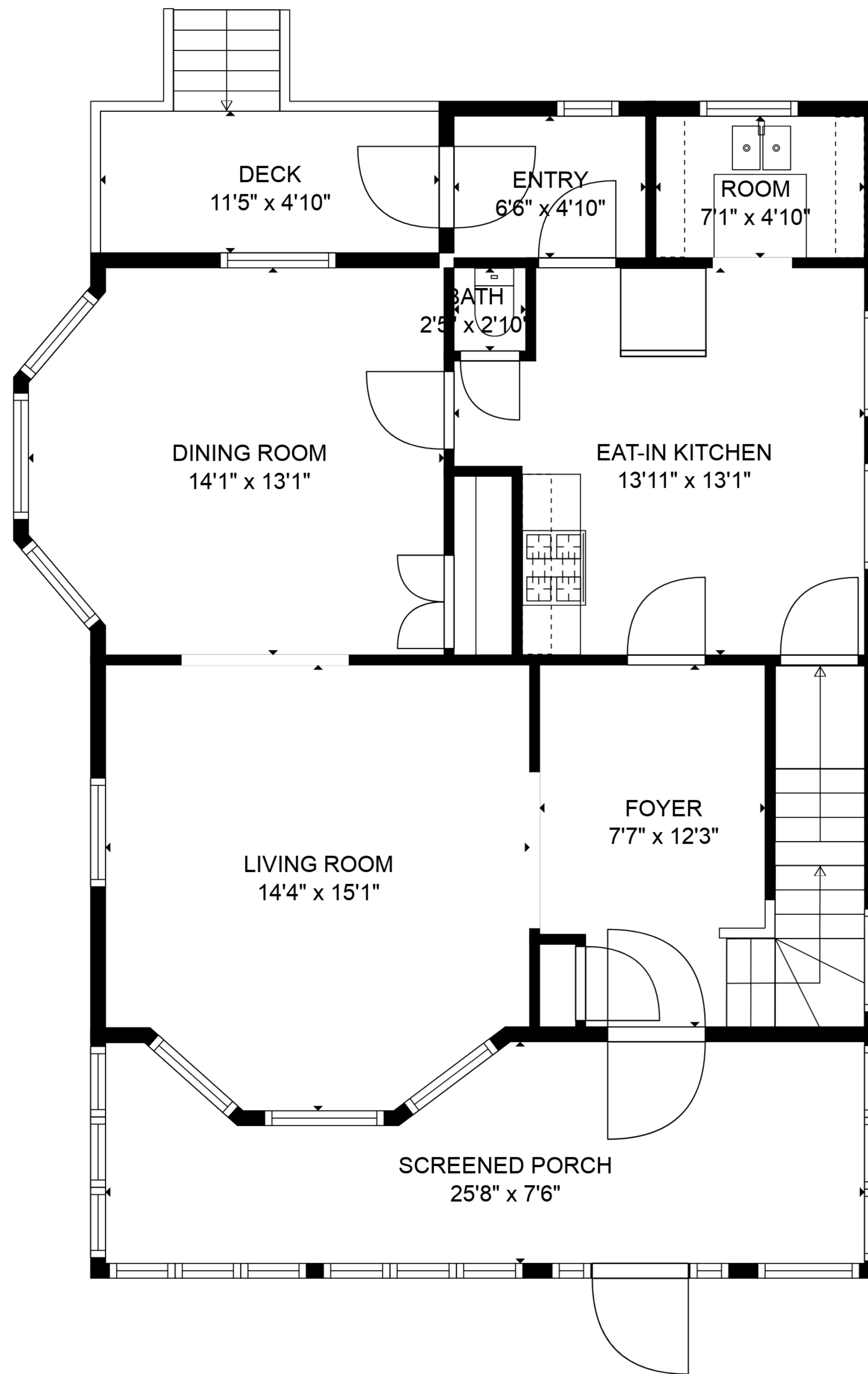


BASEMENT
26'7" x 28'0"

TOTAL: 1437 sq. ft

BELOW GROUND: 0 sq. ft, FLOOR 2: 777 sq. ft, FLOOR 3: 660 sq. ft
EXCLUDED AREAS: BASEMENT: 634 sq. ft, SCREENED PORCH: 167 sq. ft, DECK: 67 sq. ft

SIZES AND DIMENSIONS ARE APPROXIMATE, ACTUAL MAY VARY.

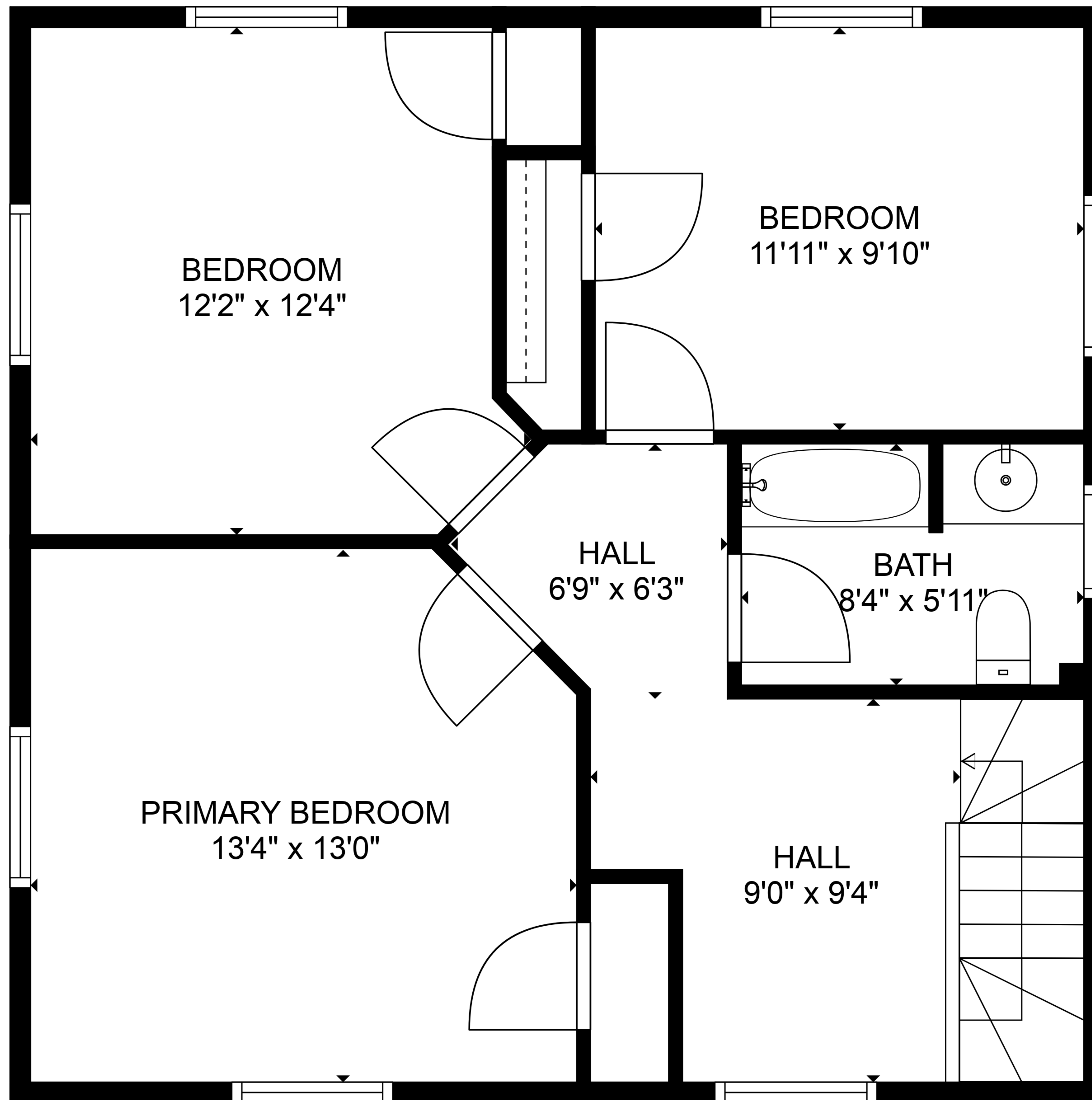


TOTAL: 1437 sq. ft

BELOW GROUND: 0 sq. ft, FLOOR 2: 777 sq. ft, FLOOR 3: 660 sq. ft

EXCLUDED AREAS: BASEMENT: 634 sq. ft, SCREENED PORCH: 167 sq. ft, DECK: 67 sq. ft

SIZES AND DIMENSIONS ARE APPROXIMATE, ACTUAL MAY VARY.

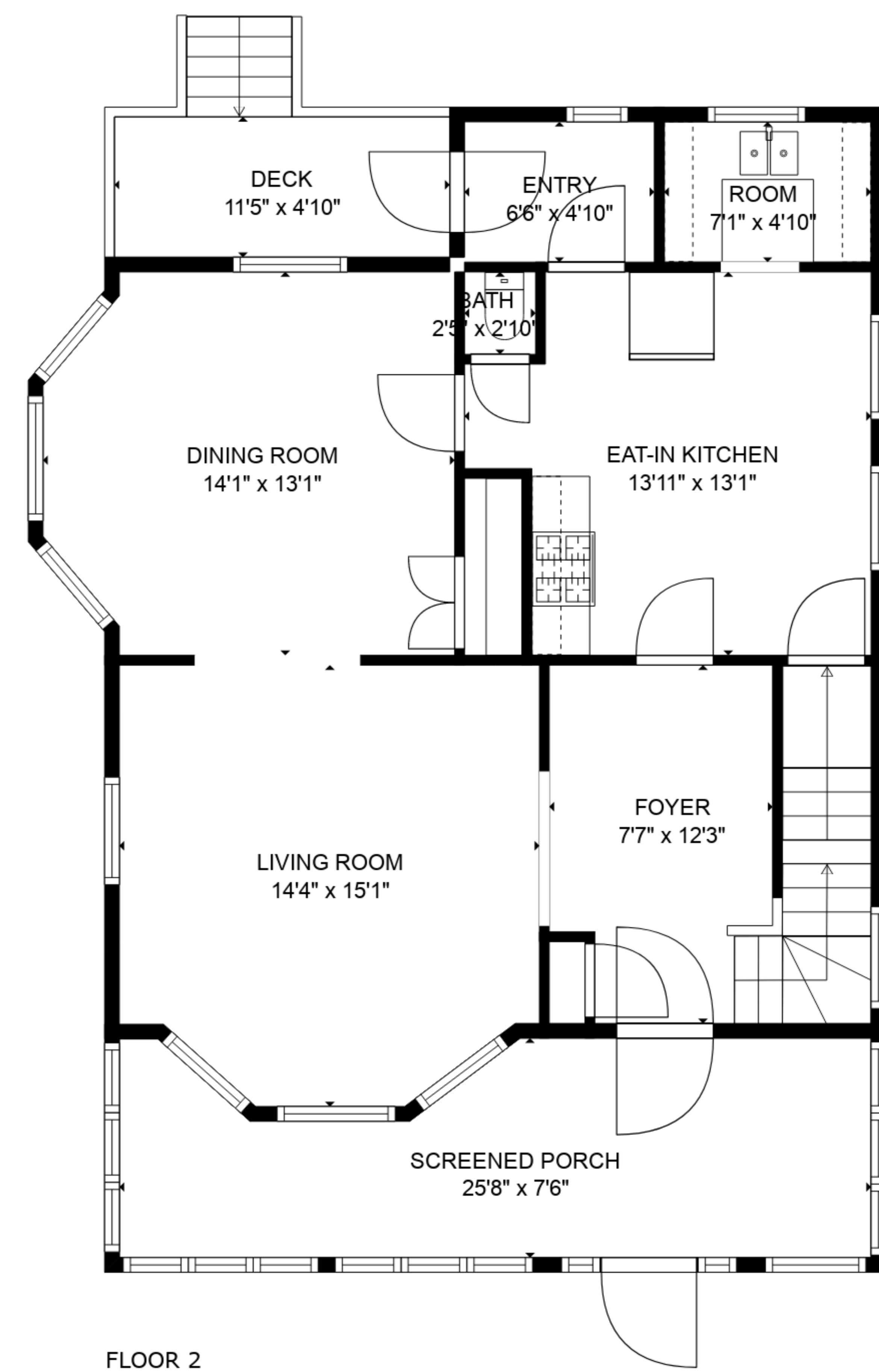


TOTAL: 1437 sq. ft

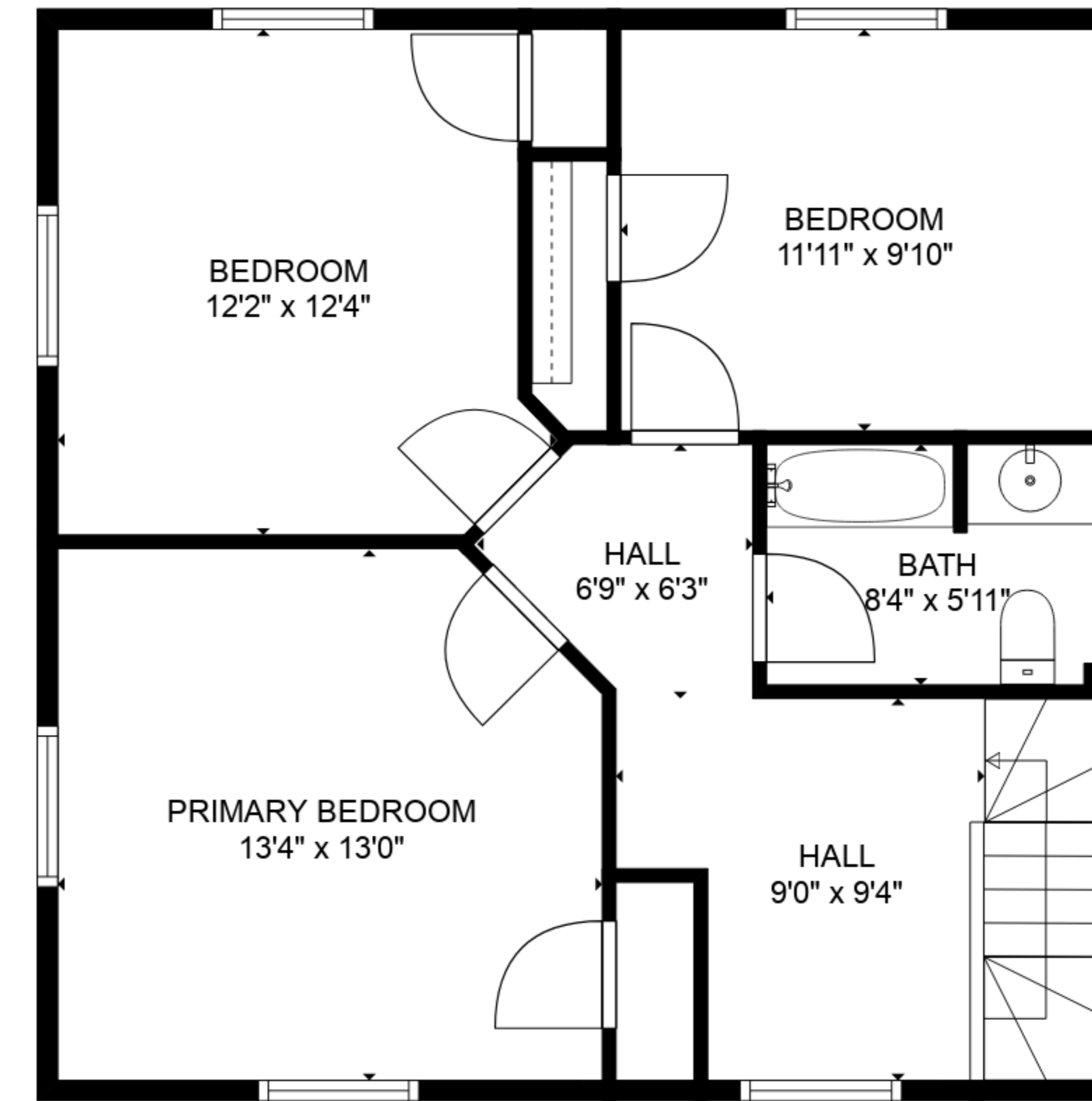
BELOW GROUND: 0 sq. ft, FLOOR 2: 777 sq. ft, FLOOR 3: 660 sq. ft

EXCLUDED AREAS: BASEMENT: 634 sq. ft, SCREENED PORCH: 167 sq. ft, DECK: 67 sq. ft

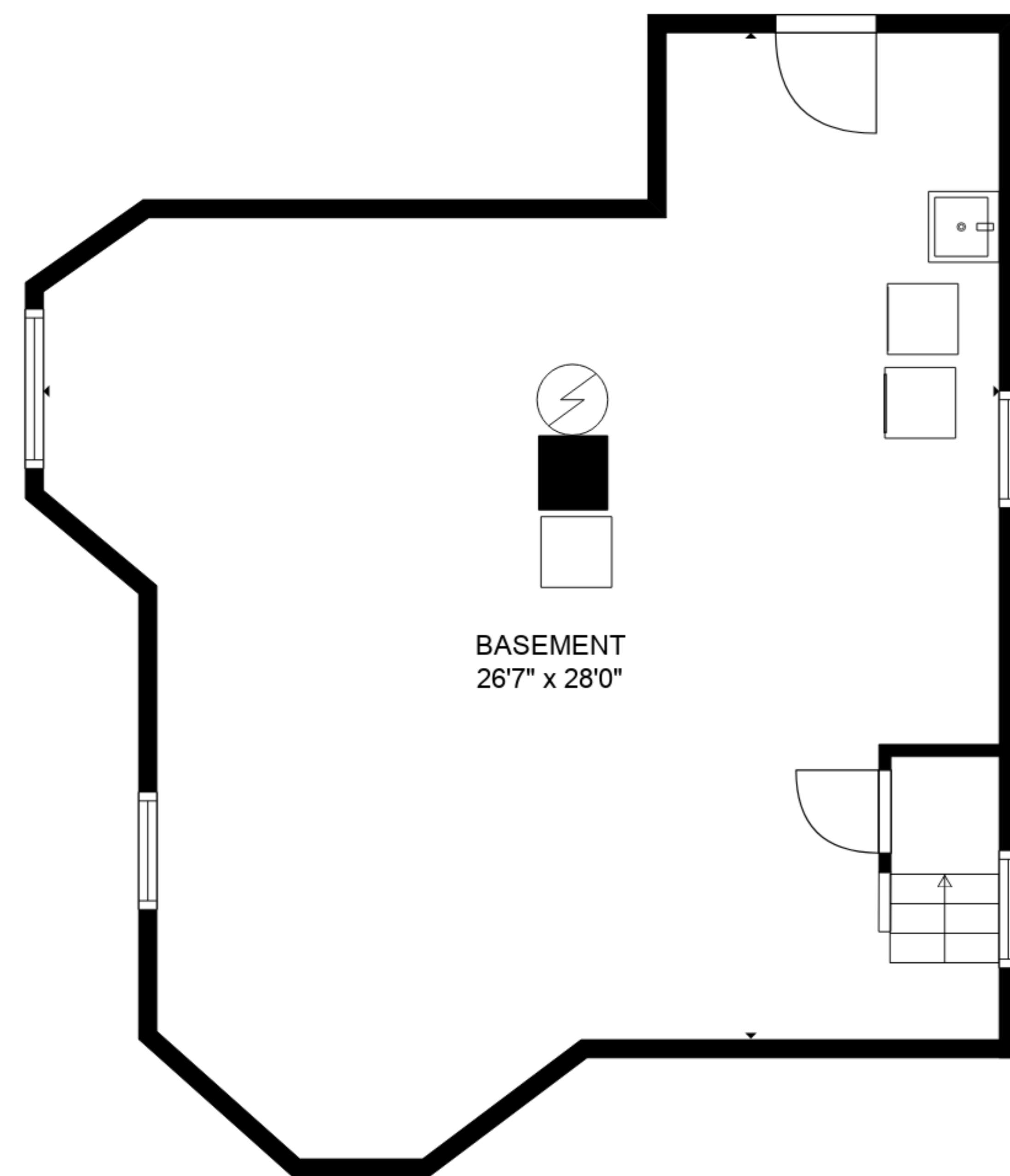
SIZES AND DIMENSIONS ARE APPROXIMATE, ACTUAL MAY VARY.



FLOOR 2



FLOOR 3



FLOOR 1

TOTAL: 1437 sq. ft
 BELOW GROUND: 0 sq. ft, FLOOR 2: 777 sq. ft, FLOOR 3: 660 sq. ft
 EXCLUDED AREAS: BASEMENT: 634 sq. ft, SCREENED PORCH: 167 sq. ft, DECK: 67 sq. ft

SIZES AND DIMENSIONS ARE APPROXIMATE, ACTUAL MAY VARY.