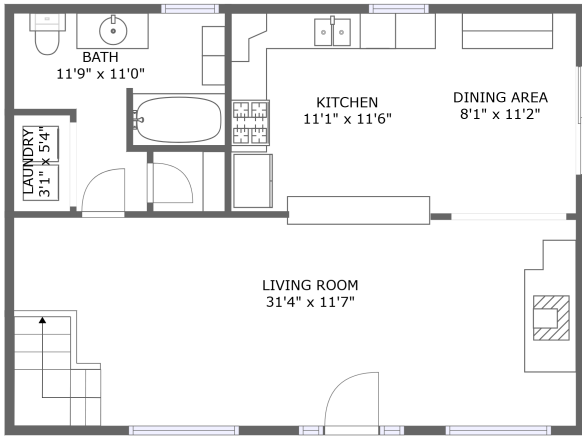


# 3815 California Highway 41, Paso Robles, San Luis Obispo County, California, United States,




FLOOR 1




FLOOR 2

## Property Summary

 **0** garages

 **1** bedrooms

 **2** bathrooms

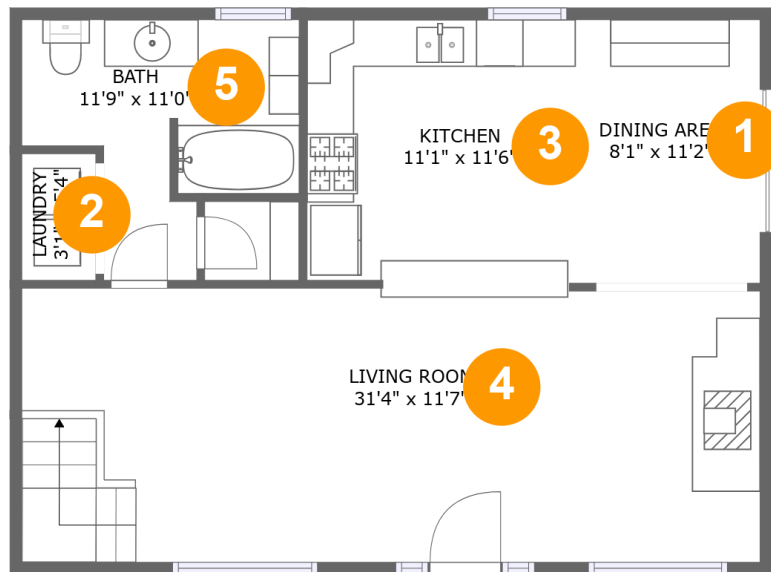
 **0** half baths

 **2** floors

 **1,465** Gross Living Area sqft

 **1,548** total sqft

# 3815 California Highway 41, Paso Robles, San Luis Obispo County, California, United States,



## Room Dimensions

Floor 1

Total sqft: 774

Living area: 774

#	Room name	Dimensions	Area (sqft)	Counted as Living Area
1	Dining Area	8'1" x 11'2"	90 sq. ft	Yes
2	Laundry	3'1" x 5'4"	17 sq. ft	Yes
3	Kitchen	11'1" x 11'6"	126 sq. ft	Yes
4	Living Room	31'4" x 11'7"	361 sq. ft	Yes
5	Bath	11'9" x 11'0"	93 sq. ft	Yes

**3815 California Highway 41, Paso Robles, San Luis Obispo County, California, United States,**



**Room Dimensions**

**Floor 2**

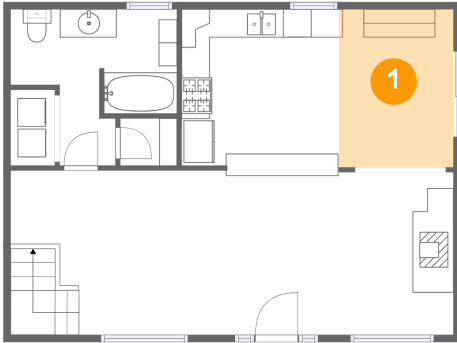
**Total sqft: 774**

**Living area: 691**

#	Room name	Dimensions	Area (sqft)	Counted as Living Area
6	Bath	10'3" x 7'2"	73 sq. ft	No
7	Bedroom	31'4" x 23'0"	564 sq. ft	Yes

# 3815 California Highway 41, Paso Robles, San Luis Obispo County, California, United States,

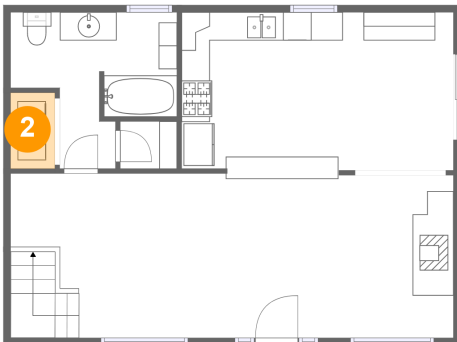
## 1 Floor 1 - Dining Area



Dimensions: 8'1" x 11'2"  
Area: 90 sq. ft  
Counted as Living Area:  
Yes

Heated: Yes  
Finished: Yes  
Enclosed: Yes  
Contiguous:  
Yes  
Permitted: Yes  
Wet Space: No  
Addition: No  
Conversion: No

## 2 Floor 1 - Laundry

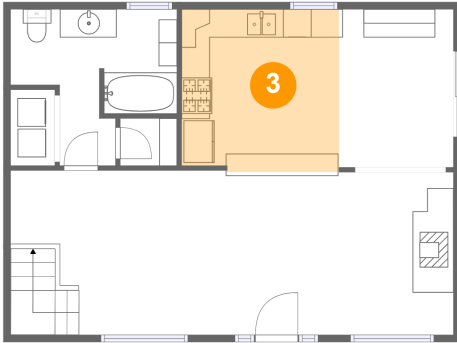


Dimensions: 3'1" x 5'4"  
Area: 17 sq. ft  
Counted as Living Area:  
Yes

Heated: Yes  
Finished: Yes  
Enclosed: Yes  
Contiguous:  
Yes  
Permitted: Yes  
Wet Space: No  
Addition: No  
Conversion: No

# 3815 California Highway 41, Paso Robles, San Luis Obispo County, California, United States,

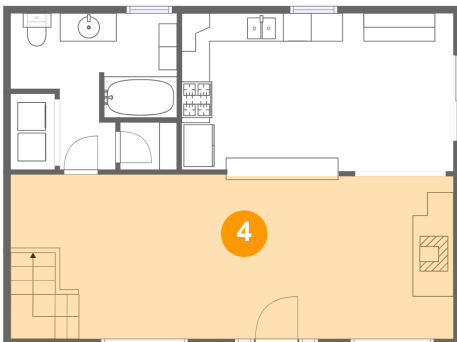
## 3 Floor 1 - Kitchen



Dimensions: 11'1" x 11'6"  
Area: 126 sq. ft  
Counted as Living Area:  
Yes

Heated: Yes  
Finished: Yes  
Enclosed: Yes  
Contiguous:  
Yes  
Permitted: Yes  
Wet Space: No  
Addition: No  
Conversion: No

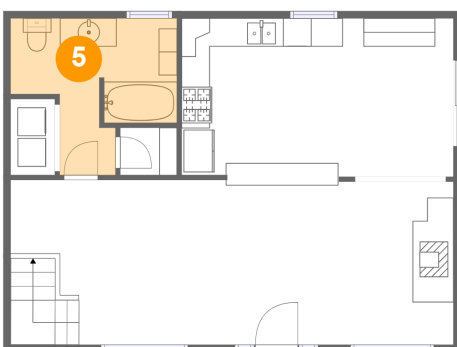
## 4 Floor 1 - Living Room



Dimensions: 31'4" x 11'7"  
Area: 361 sq. ft  
Counted as Living Area:  
Yes

Heated: Yes  
Finished: Yes  
Enclosed: Yes  
Contiguous:  
Yes  
Permitted: Yes  
Wet Space: No  
Addition: No  
Conversion: No

## 5 Floor 1 - Bath

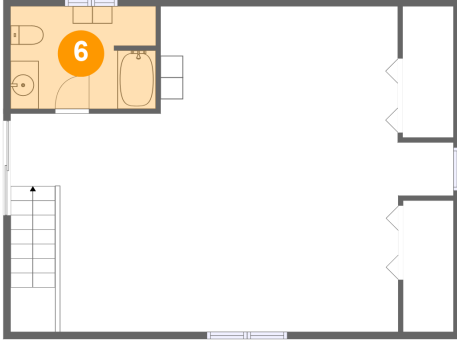


Dimensions: 11'9" x 11'0"  
Area: 93 sq. ft  
Counted as Living Area:  
Yes

Heated: Yes  
Finished: Yes  
Enclosed: Yes  
Contiguous:  
Yes  
Permitted: Yes  
Wet Space: Yes  
Addition: No  
Conversion: No

**3815 California Highway 41, Paso Robles, San Luis Obispo County, California, United States,**

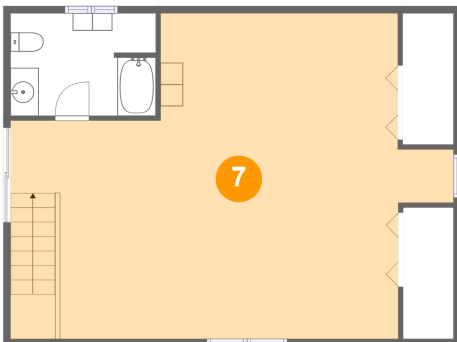
**6 Floor 2 - Bath**



Dimensions: 10'3" x 7'2"  
Area: 73 sq. ft  
Counted as Living Area: No

Heated: Yes  
Finished: Yes  
Enclosed: Yes  
Contiguous: Yes  
Permitted: Yes  
Wet Space: Yes  
Addition: No  
Conversion: No

**7 Floor 2 - Bedroom**



Dimensions: 31'4" x 23'0"  
Area: 564 sq. ft  
Counted as Living Area: Yes

Heated: Yes  
Finished: Yes  
Enclosed: Yes  
Contiguous: Yes  
Permitted: Yes  
Wet Space: No  
Addition: No  
Conversion: No