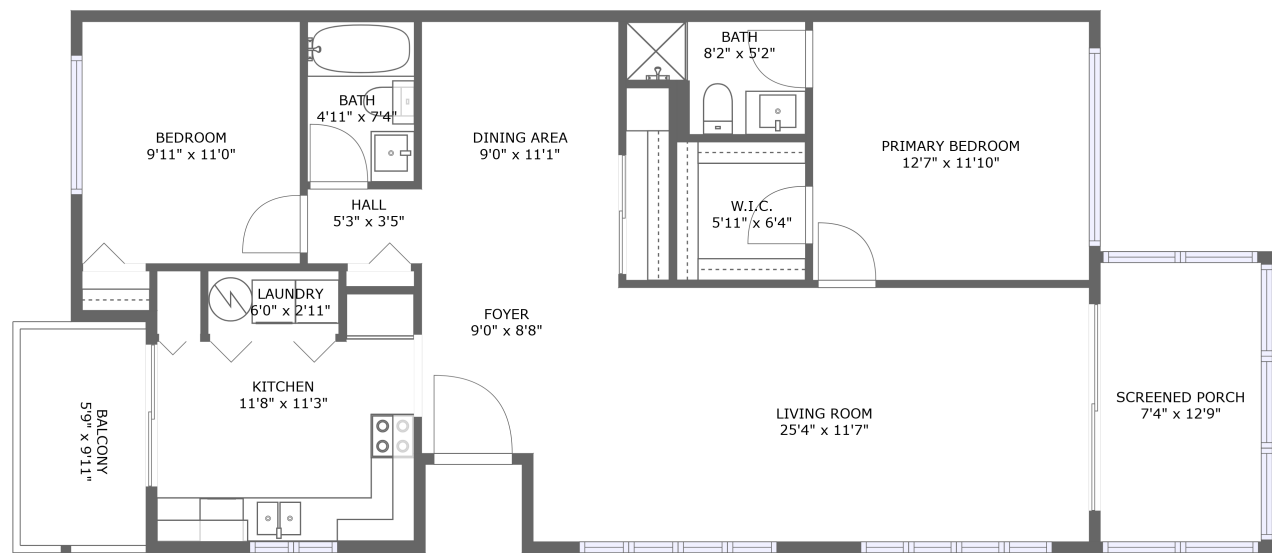


Home report

3864 Lighthouse Way, Beacon Square, New Port Richey, Pasco County, Florida, United States, 34652



FLOOR 1

Total Area: 1033 sq. ft

Floor 1: 1033 sq. ft

Excluded: Screened porch 94 sq. ft, Balcony 57 sq. ft, Walls: 0 sq. ft

Property summary

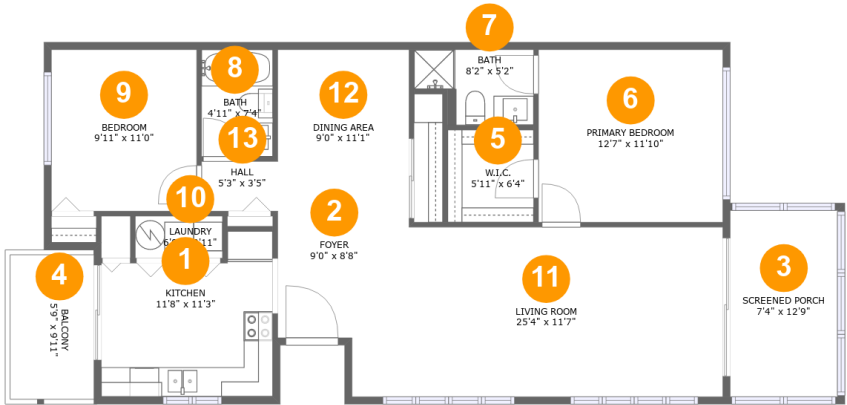
 **1** Floors

 **2** Bedrooms

 **2** Bathrooms

Home report

3864 Lighthouse Way, Beacon Square, New Port Richey, Pasco County, Florida, United States, 34652



Room dimensions

Floor 1

Total:1033sqft Excluded: 151sqft

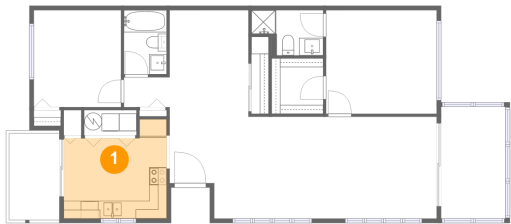
#		Max Dimensions	sqft	Included
1	Kitchen	11'8" x 11'3"	114 sq. ft	Yes
2	Foyer	9'0" x 8'8"	63 sq. ft	Yes
3	Screened Porch	7'4" x 12'9"	94 sq. ft	No
4	Balcony	5'9" x 9'11"	57 sq. ft	No
5	W.I.C.	5'11" x 6'4"	37 sq. ft	Yes
6	Primary Bedroom	12'7" x 11'10"	149 sq. ft	Yes
7	Bath	8'2" x 5'2"	36 sq. ft	Yes
8	Bath	4'11" x 7'4"	36 sq. ft	Yes
9	Bedroom	9'11" x 11'0"	110 sq. ft	Yes
10	Laundry	6'0" x 2'11"	17 sq. ft	Yes
11	Living Room	25'4" x 11'7"	280 sq. ft	Yes

Home report

3864 Lighthouse Way, Beacon Square, New Port Richey, Pasco County, Florida, United States, 34652

#		Max Dimensions	sqft	Included
12	Dining Area	9'0" x 11'1"	99 sq. ft	Yes
13	Hall	5'3" x 3'5"	18 sq. ft	Yes

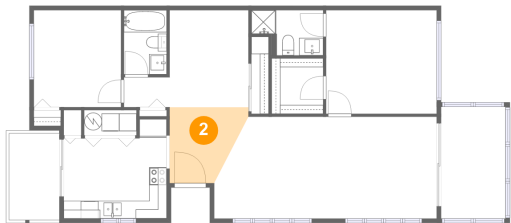
1 Floor 1 - Kitchen



Max Dimensions: 11'8" x 11'3"
Calculated Area: 114 sq. ft
Included: Yes

Heated: Yes
Finished: Yes
Enclosed: Yes
Contiguous: Yes
Permitted: Yes
Wet space: No
Addition: No
Conversion: No

2 Floor 1 - Foyer



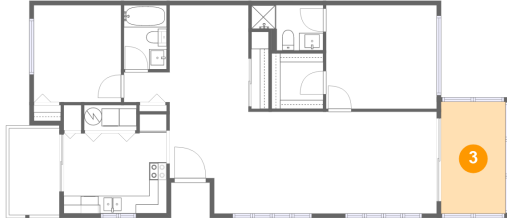
Max Dimensions: 9'0" x 8'8"
Calculated Area: 63 sq. ft
Included: Yes

Heated: Yes
Finished: Yes
Enclosed: Yes
Contiguous: Yes
Permitted: Yes
Wet space: No
Addition: No
Conversion: No

Home report

3864 Lighthouse Way, Beacon Square, New Port Richey, Pasco County, Florida, United States, 34652

3 Floor 1 - Screened Porch



Max Dimensions: 7'4" x 12'9"
Calculated Area: 94 sq. ft
Included: No

Heated: No
Finished: Yes
Enclosed: No
Contiguous: Yes
Permitted: Yes
Wet space: No
Addition: No
Conversion: No

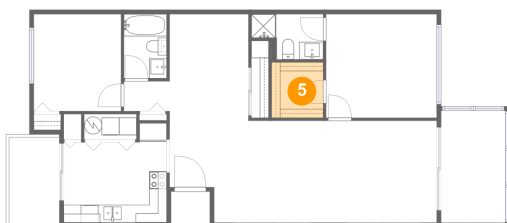
4 Floor 1 - Balcony



Max Dimensions: 5'9" x 9'11"
Calculated Area: 57 sq. ft
Included: No

Heated: No
Finished: Yes
Enclosed: No
Contiguous: Yes
Permitted: Yes
Wet space: No
Addition: No
Conversion: No

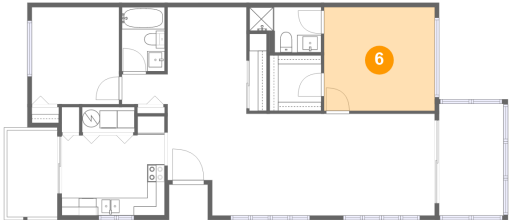
5 Floor 1 - W.I.C.



Max Dimensions: 5'11" x 6'4"
Calculated Area: 37 sq. ft
Included: Yes

Heated: Yes
Finished: Yes
Enclosed: Yes
Contiguous: Yes
Permitted: Yes
Wet space: No
Addition: No
Conversion: No

6 Floor 1 - Primary Bedroom



Max Dimensions: 12'7" x 11'10"
Calculated Area: 149 sq. ft
Included: Yes

Heated: Yes
Finished: Yes
Enclosed: Yes
Contiguous: Yes
Permitted: Yes
Wet space: No
Addition: No
Conversion: No

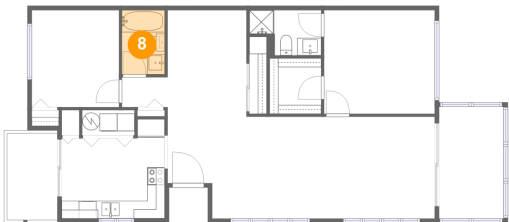
7 Floor 1 - Bath



Max Dimensions: 8'2" x 5'2"
Calculated Area: 36 sq. ft
Included: Yes

Heated: Yes
Finished: Yes
Enclosed: Yes
Contiguous: Yes
Permitted: Yes
Wet space: Yes
Addition: No
Conversion: No

8 Floor 1 - Bath

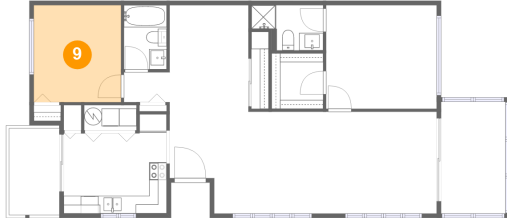


Max Dimensions: 4'11" x 7'4"
Calculated Area: 36 sq. ft
Included: Yes

Heated: Yes
Finished: Yes
Enclosed: Yes
Contiguous: Yes
Permitted: Yes
Wet space: Yes
Addition: No
Conversion: No

3864 Lighthouse Way, Beacon Square, New Port Richey, Pasco County, Florida, United States, 34652

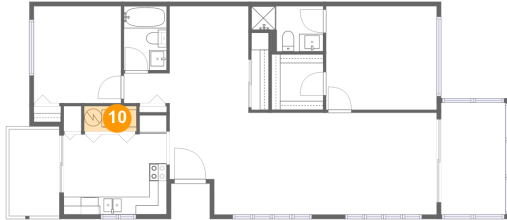
9 Floor 1 - Bedroom



Max Dimensions: 9'11" x 11'0"
Calculated Area: 110 sq. ft
Included: Yes

Heated: Yes
Finished: Yes
Enclosed: Yes
Contiguous: Yes
Permitted: Yes
Wet space: No
Addition: No
Conversion: No

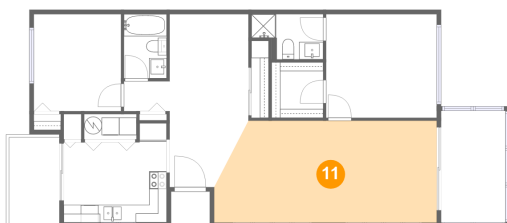
10 Floor 1 - Laundry



Max Dimensions: 6'0" x 2'11"
Calculated Area: 17 sq. ft
Included: Yes

Heated: Yes
Finished: Yes
Enclosed: Yes
Contiguous: Yes
Permitted: Yes
Wet space: No
Addition: No
Conversion: No

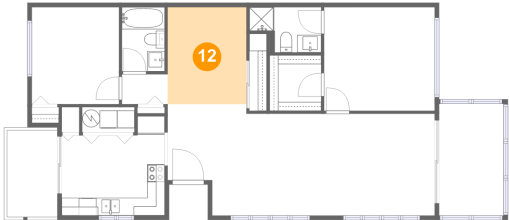
11 Floor 1 - Living Room



Max Dimensions: 25'4" x 11'7"
Calculated Area: 280 sq. ft
Included: Yes

Heated: Yes
Finished: Yes
Enclosed: Yes
Contiguous: Yes
Permitted: Yes
Wet space: No
Addition: No
Conversion: No

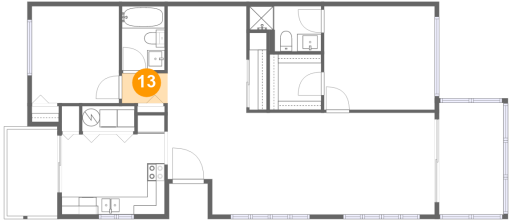
12 Floor 1 - Dining Area



Max Dimensions: 9'0" x 11'1"
Calculated Area: 99 sq. ft
Included: Yes

Heated: Yes
Finished: Yes
Enclosed: Yes
Contiguous: Yes
Permitted: Yes
Wet space: No
Addition: No
Conversion: No

13 Floor 1 - Hall



Max Dimensions: 5'3" x 3'5"
Calculated Area: 18 sq. ft
Included: Yes

Heated: Yes
Finished: Yes
Enclosed: Yes
Contiguous: Yes
Permitted: Yes
Wet space: No
Addition: No
Conversion: No