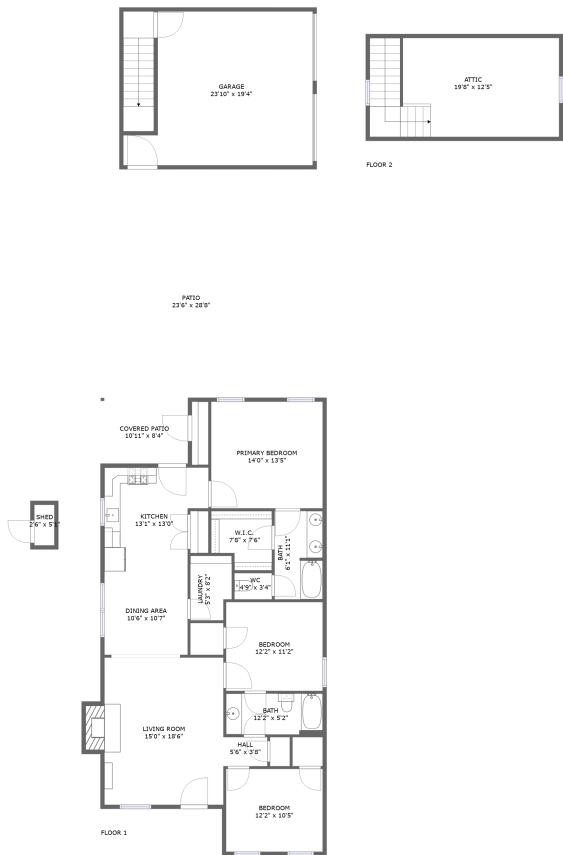


Home report

703 Willow Schoals Drive, River Landing, Madison, Madison County, Alabama, United States, 35756



**Total Area: 1434 sq. ft**  
Floor 1: 1434 sq. ft, Floor 2: 0 sq. ft  
Excluded: Shed 13 sq. ft, Garage 394 sq. ft, Covered patio 91 sq. ft, Patio 196 sq. ft, Fireplace 16 sq. ft, Low ceiling 34 sq. ft, Attic 262 sq. ft, Walls: 182 sq. ft

Property summary

 **2** Floors

 **3** Bedrooms

 **2** Bathrooms

 **1** Garages

Home report

703 Willow Schoals Drive, River Landing, Madison, Madison County, Alabama, United States, 35756



Room dimensions

Floor 1 Total:1434sqft   Excluded: 710sqft

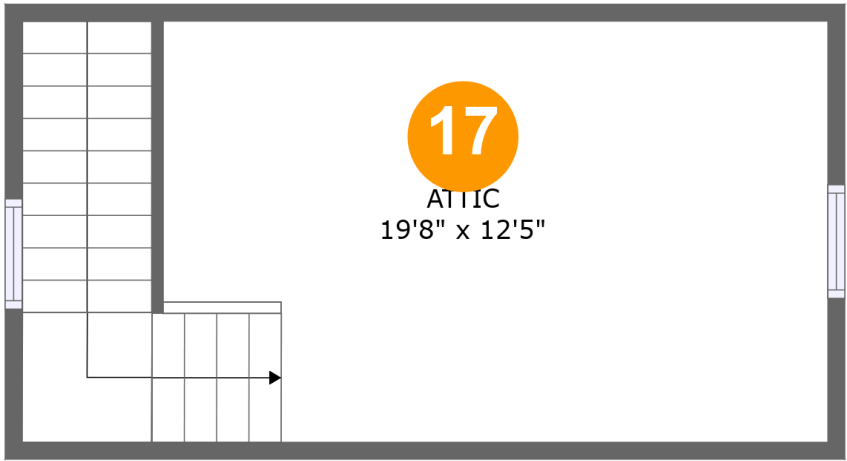
#		Max Dimensions	sqft	Included
1	Bath	6'1" x 11'1"	66 sq. ft	Yes
2	W.I.C.	7'8" x 7'6"	51 sq. ft	Yes
3	Shed	2'6" x 5'1"	13 sq. ft	No
4	Hall	5'6" x 3'8"	20 sq. ft	Yes
5	Bedroom	12'2" x 11'2"	136 sq. ft	Yes
6	Dining Area	10'6" x 10'7"	110 sq. ft	Yes
7	Covered Patio	10'11" x 8'4"	91 sq. ft	No
8	Primary Bedroom	14'0" x 13'5"	188 sq. ft	Yes
9	Patio	23'6" x 28'8"	196 sq. ft	No
10	Garage	23'10" x 19'4"	394 sq. ft	No
11	WC	4'9" x 3'4"	16 sq. ft	Yes

## Home report

**703 Willow Schoals Drive, River Landing, Madison, Madison  
County, Alabama, United States, 35756**

#		Max Dimensions	sqft	Included
12	Living Room	15'0" x 18'6"	291 sq. ft	Yes
13	Kitchen	13'1" x 13'0"	150 sq. ft	Yes
14	Laundry	5'3" x 8'2"	40 sq. ft	Yes
15	Bath	12'2" x 5'2"	62 sq. ft	Yes
16	Bedroom	12'2" x 10'5"	127 sq. ft	Yes

703 Willow Schoals Drive, River Landing, Madison, Madison  
County, Alabama, United States, 35756



Room dimensions

Floor 2 Total:0sqft   Excluded: 296sqft

#		Max Dimensions	sqft	Included
17	Attic	19'8" x 12'5"	260 sq. ft	No

703 Willow Schoals Drive, River Landing, Madison, Madison  
County, Alabama, United States, 35756

1 Floor 1 - Bath



Max Dimensions: 6'1" x 11'1"  
Calculated Area: 66 sq. ft  
Included: Yes

Heated: Yes  
Finished: Yes  
Enclosed: Yes  
Contiguous: Yes  
Permitted: Yes  
Wet space: Yes  
Addition: No  
Conversion: No



2 Floor 1 - W.I.C.



Max Dimensions: 7'8" x 7'6"  
Calculated Area: 51 sq. ft  
Included: Yes

Heated: Yes  
Finished: Yes  
Enclosed: Yes  
Contiguous: Yes  
Permitted: Yes  
Wet space: No  
Addition: No  
Conversion: No



703 Willow Schoals Drive, River Landing, Madison, Madison  
County, Alabama, United States, 35756

3 Floor 1 - Shed



Max Dimensions: 2'6" x 5'1"  
Calculated Area: 13 sq. ft  
Included: No

Heated: No  
Finished: No  
Enclosed: No  
Contiguous: Yes  
Permitted: Yes  
Wet space: No  
Addition: No  
Conversion: No

4 Floor 1 - Hall



Max Dimensions: 5'6" x 3'8"  
Calculated Area: 20 sq. ft  
Included: Yes

Heated: Yes  
Finished: Yes  
Enclosed: Yes  
Contiguous: Yes  
Permitted: Yes  
Wet space: No  
Addition: No  
Conversion: No

5 Floor 1 - Bedroom



Max Dimensions: 12'2" x 11'2"  
Calculated Area: 136 sq. ft  
Included: Yes

Heated: Yes  
Finished: Yes  
Enclosed: Yes  
Contiguous: Yes  
Permitted: Yes  
Wet space: No  
Addition: No  
Conversion: No

703 Willow Schoals Drive, River Landing, Madison, Madison  
County, Alabama, United States, 35756

6 Floor 1 - Dining Area



Max Dimensions: 10'6" x 10'7"  
Calculated Area: 110 sq. ft  
Included: Yes

Heated: Yes  
Finished: Yes  
Enclosed: Yes  
Contiguous: Yes  
Permitted: Yes  
Wet space: No  
Addition: No  
Conversion: No

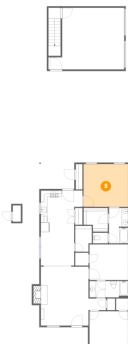
7 Floor 1 - Covered Patio



Max Dimensions: 10'11" x 8'4"  
Calculated Area: 91 sq. ft  
Included: No

Heated: No  
Finished: No  
Enclosed: No  
Contiguous: Yes  
Permitted: Yes  
Wet space: No  
Addition: No  
Conversion: No

8 Floor 1 - Primary Bedroom



Max Dimensions: 14'0" x 13'5"  
Calculated Area: 188 sq. ft  
Included: Yes

Heated: Yes  
Finished: Yes  
Enclosed: Yes  
Contiguous: Yes  
Permitted: Yes  
Wet space: No  
Addition: No  
Conversion: No

703 Willow Schoals Drive, River Landing, Madison, Madison  
County, Alabama, United States, 35756

9 Floor 1 - Patio



Max Dimensions: 23'6" x 28'8"  
Calculated Area: 196 sq. ft  
Included: No

Heated: No  
Finished: No  
Enclosed: No  
Contiguous: Yes  
Permitted: Yes  
Wet space: No  
Addition: No  
Conversion: No

10 Floor 1 - Garage



Max Dimensions: 23'10" x 19'4"  
Calculated Area: 394 sq. ft  
Included: No

Heated: No  
Finished: No  
Enclosed: Yes  
Contiguous: Yes  
Permitted: Yes  
Wet space: No  
Addition: No  
Conversion: No

11 Floor 1 - WC



Max Dimensions: 4'9" x 3'4"  
Calculated Area: 16 sq. ft  
Included: Yes

Heated: Yes  
Finished: Yes  
Enclosed: Yes  
Contiguous: Yes  
Permitted: Yes  
Wet space: Yes  
Addition: No  
Conversion: No



703 Willow Schoals Drive, River Landing, Madison, Madison  
County, Alabama, United States, 35756

12 Floor 1 - Living Room



Max Dimensions: 15'0" x 18'6"  
Calculated Area: 291 sq. ft  
Included: Yes

Heated: Yes  
Finished: Yes  
Enclosed: Yes  
Contiguous: Yes  
Permitted: Yes  
Wet space: No  
Addition: No  
Conversion: No

13 Floor 1 - Kitchen



Max Dimensions: 13'1" x 13'0"  
Calculated Area: 150 sq. ft  
Included: Yes

Heated: Yes  
Finished: Yes  
Enclosed: Yes  
Contiguous: Yes  
Permitted: Yes  
Wet space: No  
Addition: No  
Conversion: No

14 Floor 1 - Laundry



Max Dimensions: 5'3" x 8'2"  
Calculated Area: 40 sq. ft  
Included: Yes

Heated: Yes  
Finished: Yes  
Enclosed: Yes  
Contiguous: Yes  
Permitted: Yes  
Wet space: No  
Addition: No  
Conversion: No

703 Willow Schoals Drive, River Landing, Madison, Madison  
County, Alabama, United States, 35756

15 Floor 1 - Bath



Max Dimensions: 12'2" x 5'2"  
Calculated Area: 62 sq. ft  
Included: Yes

Heated: Yes  
Finished: Yes  
Enclosed: Yes  
Contiguous: Yes  
Permitted: Yes  
Wet space: Yes  
Addition: No  
Conversion: No

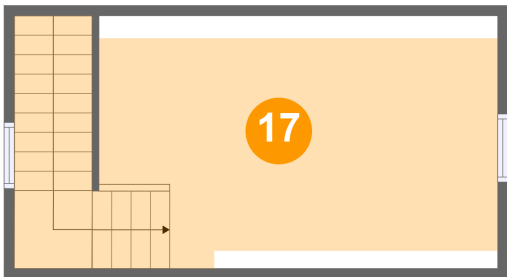
16 Floor 1 - Bedroom



Max Dimensions: 12'2" x 10'5"  
Calculated Area: 127 sq. ft  
Included: Yes

Heated: Yes  
Finished: Yes  
Enclosed: Yes  
Contiguous: Yes  
Permitted: Yes  
Wet space: No  
Addition: No  
Conversion: No

17 Floor 2 - Attic



Max Dimensions: 19'8" x 12'5"  
Calculated Area: 260 sq. ft  
Included: No

Heated: No  
Finished: No  
Enclosed: Yes  
Contiguous: Yes  
Permitted: Yes  
Wet space: No  
Addition: No  
Conversion: No