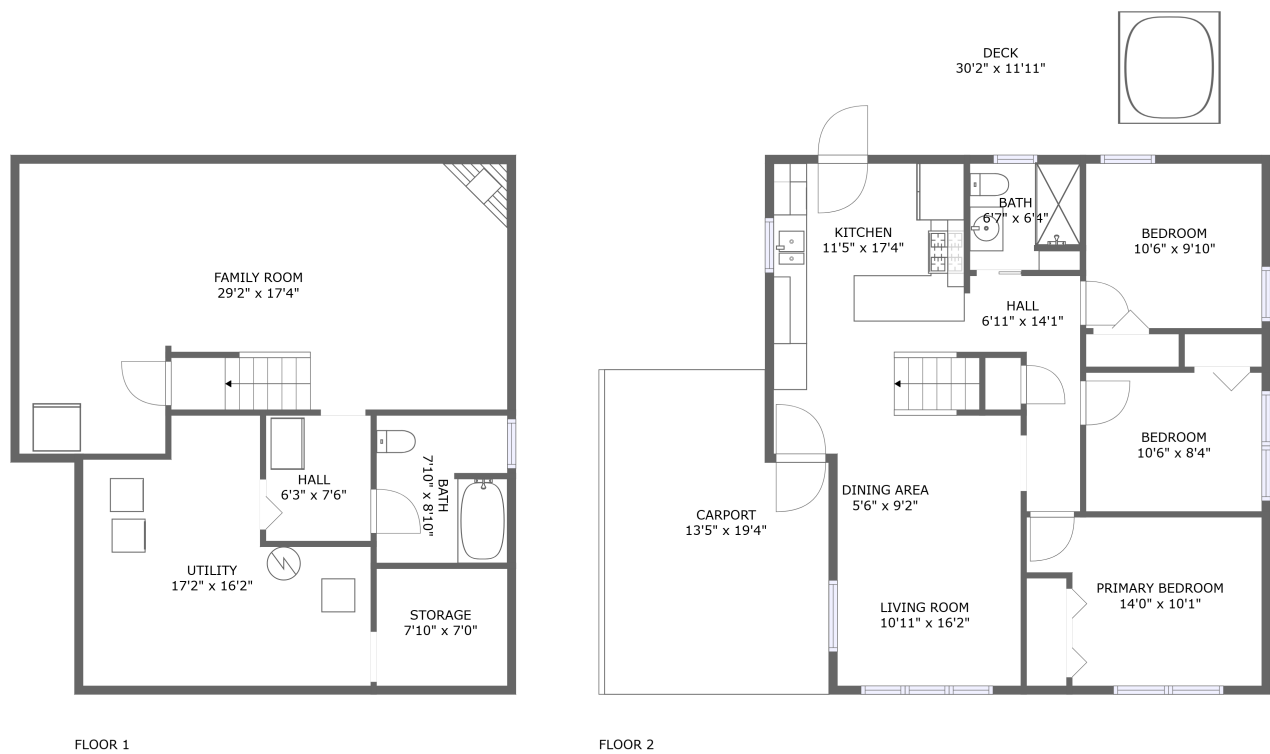



Home report


1426 Deacon Street,Salem,Virginia,United States




Property summary




**0**  
Garages




**3**  
Bedrooms




**2**  
Bathrooms




**0**  
Half baths



**2**  
Floors



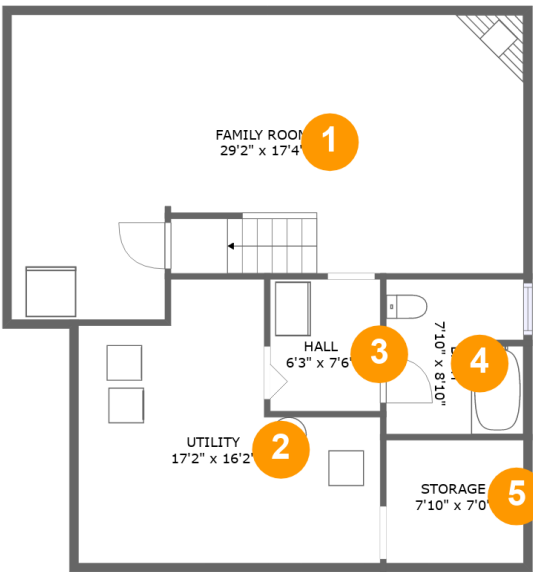
**1,540**  
Gross living  
area sqft



**2,429**  
Total sqft

Home report

1426 Deacon Street,Salem,Virginia,United States



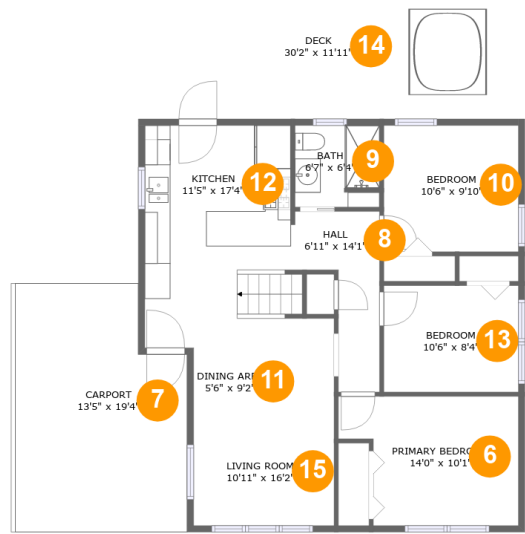
Room dimensions

Floor 1Total sqft: 916    Living area: 624

#		Dimensions	sqft	Counted as living area
1	Family Room	29'2" x 17'4"	448 sq. ft	Yes
2	Utility	17'2" x 16'2"	212 sq. ft	No
3	Hall	6'3" x 7'6"	47 sq. ft	Yes
4	Bath	7'10" x 8'10"	68 sq. ft	Yes
5	Storage	7'10" x 7'0"	55 sq. ft	No

Home report

1426 Deacon Street,Salem,Virginia,United States

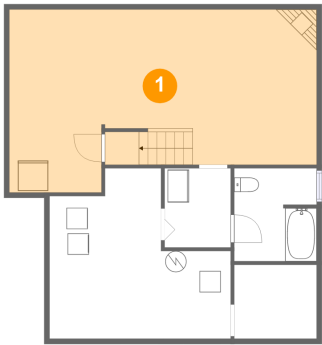


Room dimensions

Floor 2 Total sqft: 1513    Living area: 916

#		Dimensions	sqft	Counted as living area
6	Primary Bedroom	14'0" x 10'1"	123 sq. ft	Yes
7	Carport	13'5" x 19'4"	238 sq. ft	No
8	Hall	6'11" x 14'1"	63 sq. ft	Yes
9	Bath	6'7" x 6'4"	41 sq. ft	Yes
10	Bedroom	10'6" x 9'10"	103 sq. ft	Yes
11	Dining Area	5'6" x 9'2"	46 sq. ft	Yes
12	Kitchen	11'5" x 17'4"	186 sq. ft	Yes
13	Bedroom	10'6" x 8'4"	87 sq. ft	Yes
14	Deck	30'2" x 11'11"	359 sq. ft	No
15	Living Room	10'11" x 16'2"	126 sq. ft	Yes

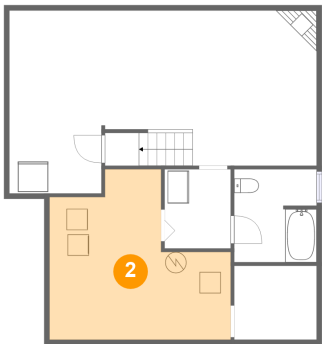
1 Floor 1 - Family Room



Dimensions: 29'2" x 17'4"  
Area: 448 sq. ft  
Counted as living area: Yes

Heated: Yes  
Finished: Yes  
Enclosed: Yes  
Contiguous: Yes  
Permitted: Yes  
Wet space: No  
Addition: No  
Conversion: No

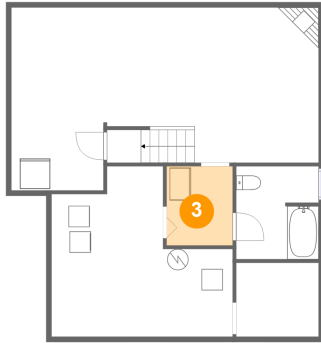
2 Floor 1 - Utility



Dimensions: 17'2" x 16'2"  
Area: 212 sq. ft  
Counted as living area: No

Heated: Yes  
Finished: No  
Enclosed: Yes  
Contiguous: Yes  
Permitted: Yes  
Wet space: No  
Addition: No  
Conversion: No

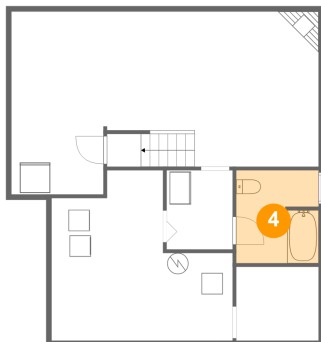
### 3 Floor 1 - Hall



Dimensions: 6'3" x 7'6"  
Area: 47 sq. ft  
Counted as living area: Yes

Heated: Yes  
Finished: Yes  
Enclosed: Yes  
Contiguous: Yes  
Permitted: Yes  
Wet space: No  
Addition: No  
Conversion: No

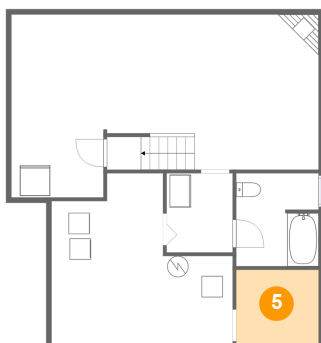
### 4 Floor 1 - Bath



Dimensions: 7'10" x 8'10"  
Area: 68 sq. ft  
Counted as living area: Yes

Heated: Yes  
Finished: Yes  
Enclosed: Yes  
Contiguous: Yes  
Permitted: Yes  
Wet space: Yes  
Addition: No  
Conversion: No

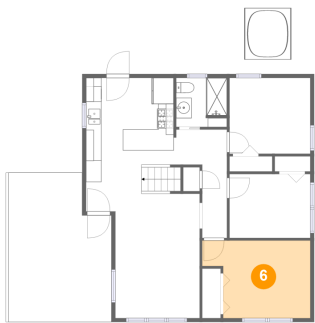
### 5 Floor 1 - Storage



Dimensions: 7'10" x 7'0"  
Area: 55 sq. ft  
Counted as living area: No

Heated: No  
Finished: No  
Enclosed: No  
Contiguous: Yes  
Permitted: Yes  
Wet space: No  
Addition: No  
Conversion: No

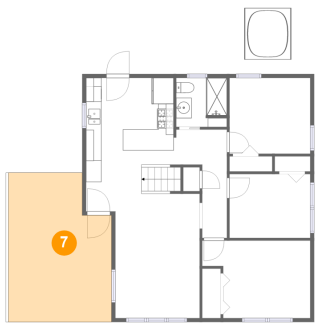
6 Floor 2 - Primary Bedroom



Dimensions: 14'0" x 10'1"  
Area: 123 sq. ft  
Counted as living area: Yes

Heated: Yes  
Finished: Yes  
Enclosed: Yes  
Contiguous: Yes  
Permitted: Yes  
Wet space: No  
Addition: No  
Conversion: No

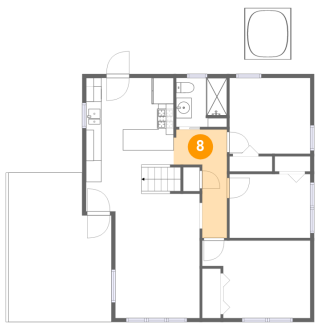
7 Floor 2 - Carport



Dimensions: 13'5" x 19'4"  
Area: 238 sq. ft  
Counted as living area: No

Heated: No  
Finished: Yes  
Enclosed: No  
Contiguous: Yes  
Permitted: Yes  
Wet space: No  
Addition: No  
Conversion: No

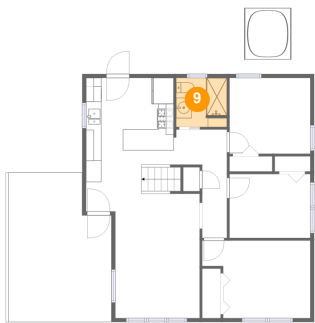
8 Floor 2 - Hall



Dimensions: 6'11" x 14'1"  
Area: 63 sq. ft  
Counted as living area: Yes

Heated: Yes  
Finished: Yes  
Enclosed: Yes  
Contiguous: Yes  
Permitted: Yes  
Wet space: No  
Addition: No  
Conversion: No

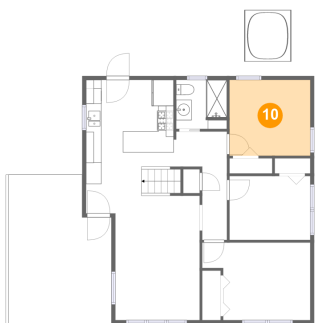
9 Floor 2 - Bath



Dimensions: 6'7" x 6'4"  
Area: 41 sq. ft  
Counted as living area: Yes

Heated: Yes  
Finished: Yes  
Enclosed: Yes  
Contiguous: Yes  
Permitted: Yes  
Wet space: Yes  
Addition: No  
Conversion: No

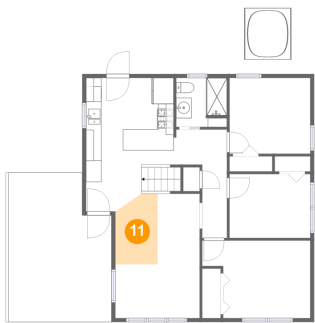
10 Floor 2 - Bedroom



Dimensions: 10'6" x 9'10"  
Area: 103 sq. ft  
Counted as living area: Yes

Heated: Yes  
Finished: Yes  
Enclosed: Yes  
Contiguous: Yes  
Permitted: Yes  
Wet space: No  
Addition: No  
Conversion: No

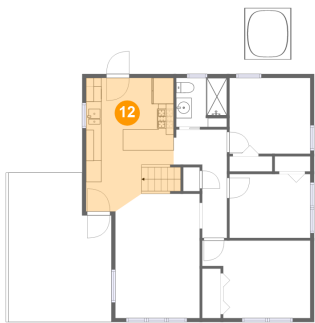
11 Floor 2 - Dining Area



Dimensions: 5'6" x 9'2"  
Area: 46 sq. ft  
Counted as living area: Yes

Heated: Yes  
Finished: Yes  
Enclosed: Yes  
Contiguous: Yes  
Permitted: Yes  
Wet space: No  
Addition: No  
Conversion: No

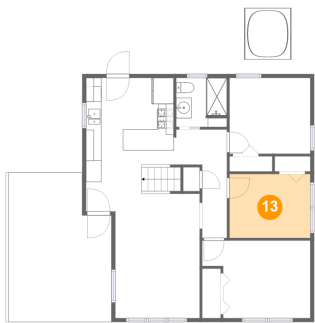
12 Floor 2 - Kitchen



Dimensions: 11'5" x 17'4"  
Area: 186 sq. ft  
Counted as living area: Yes

Heated: Yes  
Finished: Yes  
Enclosed: Yes  
Contiguous: Yes  
Permitted: Yes  
Wet space: No  
Addition: No  
Conversion: No

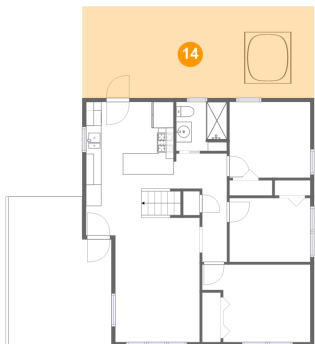
13 Floor 2 - Bedroom



Dimensions: 10'6" x 8'4"  
Area: 87 sq. ft  
Counted as living area: Yes

Heated: Yes  
Finished: Yes  
Enclosed: Yes  
Contiguous: Yes  
Permitted: Yes  
Wet space: No  
Addition: No  
Conversion: No

14 Floor 2 - Deck

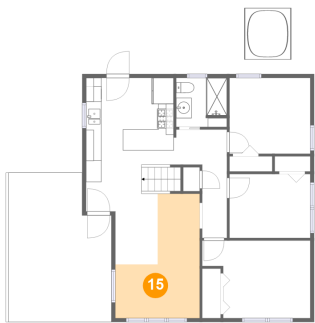


Dimensions: 30'2" x 11'11"  
Area: 359 sq. ft  
Counted as living area: No

Heated: No  
Finished: Yes  
Enclosed: No  
Contiguous: Yes  
Permitted: Yes  
Wet space: No  
Addition: No  
Conversion: No



15 Floor 2 - Living Room



Dimensions: 10'11" x 16'2"  
Area: 126 sq. ft  
Counted as living area: Yes

Heated: Yes  
Finished: Yes  
Enclosed: Yes  
Contiguous: Yes  
Permitted: Yes  
Wet space: No  
Addition: No  
Conversion: No