

Home report

423 Braddock Street, Elim, Johnstown, Cambria County,
Pennsylvania, United States, 15905



Total Area: 2870 sq. ft

Floor 1: 1115 sq. ft, Floor 2: 1755 sq. ft

Excluded: Garage 516 sq. ft, Patio 279 sq. ft, Covered patio 309 sq. ft, Undefined 8 sq. ft, Sidewalk 41 sq. ft, Porch 36 sq. ft, Deck 245 sq. ft, Walls: 234 sq. ft

Property summary

 **2**
Floors

 **6**
Bedrooms

 **3**
Bathrooms

Home report

**423 Braddock Street, Elim, Johnstown, Cambria County,
Pennsylvania, United States, 15905**



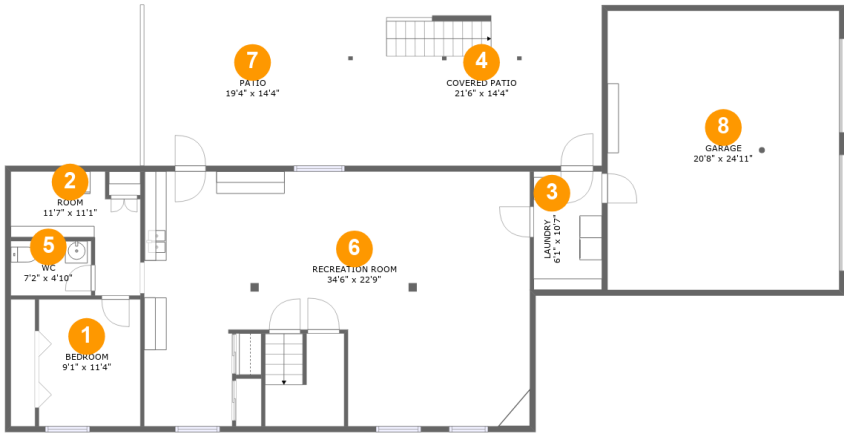
1
Half baths



1
Garages

Home report

423 Braddock Street, Elim, Johnstown, Cambria County,
Pennsylvania, United States, 15905



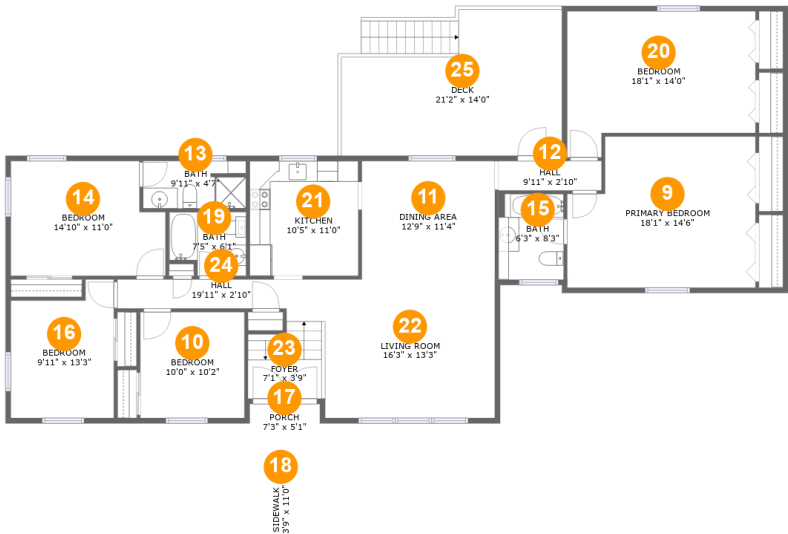
Room dimensions

Floor 1 Total:1115sqft Excluded: 1112sqft

#		Max Dimensions	sqft	Included
1	Bedroom	9'1" x 11'4"	103 sq. ft	Yes
2	Room	11'7" x 11'1"	82 sq. ft	Yes
3	Laundry	6'1" x 10'7"	65 sq. ft	Yes
4	Covered Patio	21'6" x 14'4"	309 sq. ft	No
5	WC	7'2" x 4'10"	35 sq. ft	Yes
6	Recreation Room	34'6" x 22'9"	695 sq. ft	Yes
7	Patio	19'4" x 14'4"	279 sq. ft	No
8	Garage	20'8" x 24'11"	516 sq. ft	No

Home report

423 Braddock Street, Elim, Johnstown, Cambria County,
Pennsylvania, United States, 15905



Room dimensions

Floor 2 Total:1755sqft Excluded: 322sqft

#		Max Dimensions	sqft	Included
9	Primary Bedroom	18'1" x 14'6"	241 sq. ft	Yes
10	Bedroom	10'0" x 10'2"	101 sq. ft	Yes
11	Dining Area	12'9" x 11'4"	144 sq. ft	Yes
12	Hall	9'11" x 2'10"	28 sq. ft	Yes
13	Bath	9'11" x 4'7"	44 sq. ft	Yes
14	Bedroom	14'10" x 11'0"	151 sq. ft	Yes
15	Bath	6'3" x 8'3"	51 sq. ft	Yes
16	Bedroom	9'11" x 13'3"	117 sq. ft	Yes
17	Porch	7'3" x 5'1"	36 sq. ft	No
18	Sidewalk	3'9" x 11'0"	41 sq. ft	No
19	Bath	7'5" x 6'1"	41 sq. ft	Yes

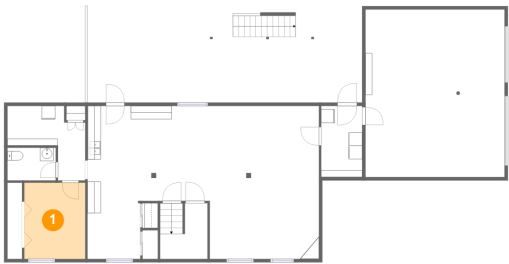
Home report

**423 Braddock Street, Elim, Johnstown, Cambria County,
Pennsylvania, United States, 15905**

#		Max Dimensions	sqft	Included
20	Bedroom	18'1" x 14'0"	218 sq. ft	Yes
21	Kitchen	10'5" x 11'0"	115 sq. ft	Yes
22	Living Room	16'3" x 13'3"	216 sq. ft	Yes
23	Foyer	7'1" x 3'9"	55 sq. ft	Yes
24	Hall	19'11" x 2'10"	56 sq. ft	Yes
25	Deck	21'2" x 14'0"	245 sq. ft	No

423 Braddock Street, Elim, Johnstown, Cambria County,
Pennsylvania, United States, 15905

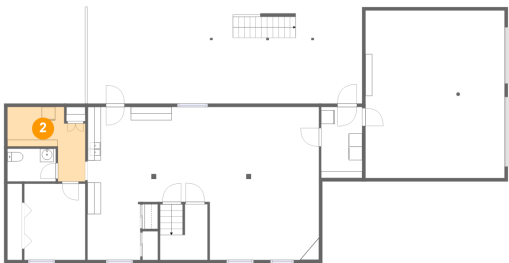
1 Floor 1 - Bedroom



Max Dimensions: 9'1" x 11'4"
Calculated Area: 103 sq. ft
Included: Yes

Heated: Yes
Finished: Yes
Enclosed: Yes
Contiguous: Yes
Permitted: Yes
Wet space: No
Addition: No
Conversion: No

2 Floor 1 - Room



Max Dimensions: 11'7" x 11'1"
Calculated Area: 82 sq. ft
Included: Yes

Heated: Yes
Finished: Yes
Enclosed: Yes
Contiguous: Yes
Permitted: Yes
Wet space: No
Addition: No
Conversion: No

423 Braddock Street, Elim, Johnstown, Cambria County,
Pennsylvania, United States, 15905

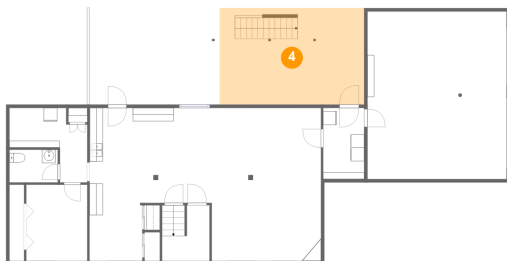
3 Floor 1 - Laundry



Max Dimensions: 6'1" x 10'7"
Calculated Area: 65 sq. ft
Included: Yes

Heated: Yes
Finished: Yes
Enclosed: Yes
Contiguous: Yes
Permitted: Yes
Wet space: No
Addition: No
Conversion: No

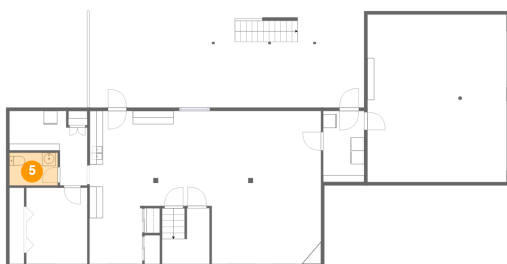
4 Floor 1 - Covered Patio



Max Dimensions: 21'6" x 14'4"
Calculated Area: 309 sq. ft
Included: No

Heated: No
Finished: Yes
Enclosed: No
Contiguous: Yes
Permitted: Yes
Wet space: No
Addition: No
Conversion: No

5 Floor 1 - WC

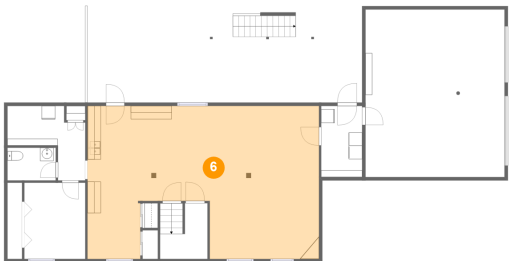


Max Dimensions: 7'2" x 4'10"
Calculated Area: 35 sq. ft
Included: Yes

Heated: Yes
Finished: Yes
Enclosed: Yes
Contiguous: Yes
Permitted: Yes
Wet space: Yes
Addition: No
Conversion: No

423 Braddock Street, Elim, Johnstown, Cambria County,
Pennsylvania, United States, 15905

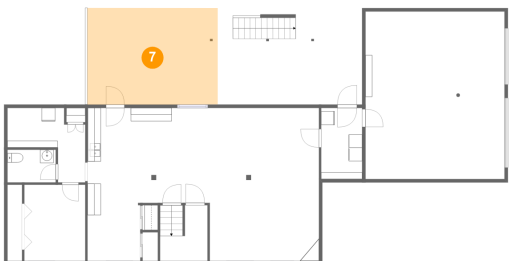
6 Floor 1 - Recreation Room



Max Dimensions: 34'6" x 22'9"
Calculated Area: 695 sq. ft
Included: Yes

Heated: Yes
Finished: Yes
Enclosed: Yes
Contiguous: Yes
Permitted: Yes
Wet space: No
Addition: No
Conversion: No

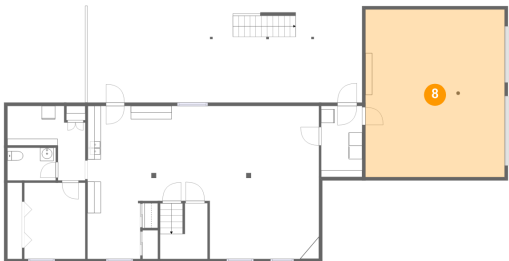
7 Floor 1 - Patio



Max Dimensions: 19'4" x 14'4"
Calculated Area: 279 sq. ft
Included: No

Heated: No
Finished: Yes
Enclosed: No
Contiguous: Yes
Permitted: Yes
Wet space: No
Addition: No
Conversion: No

8 Floor 1 - Garage



Max Dimensions: 20'8" x 24'11"
Calculated Area: 516 sq. ft
Included: No

Heated: No
Finished: No
Enclosed: Yes
Contiguous: Yes
Permitted: Yes
Wet space: No
Addition: No
Conversion: No

423 Braddock Street, Elim, Johnstown, Cambria County,
Pennsylvania, United States, 15905

9 Floor 2 - Primary Bedroom



Max Dimensions: 18'1" x 14'6"
Calculated Area: 241 sq. ft
Included: Yes

Heated: Yes
Finished: Yes
Enclosed: Yes
Contiguous: Yes
Permitted: Yes
Wet space: No
Addition: No
Conversion: No

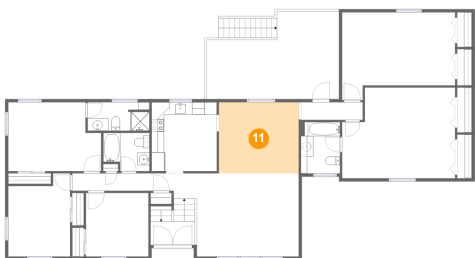
10 Floor 2 - Bedroom



Max Dimensions: 10'0" x 10'2"
Calculated Area: 101 sq. ft
Included: Yes

Heated: Yes
Finished: Yes
Enclosed: Yes
Contiguous: Yes
Permitted: Yes
Wet space: No
Addition: No
Conversion: No

11 Floor 2 - Dining Area



Max Dimensions: 12'9" x 11'4"
Calculated Area: 144 sq. ft
Included: Yes

Heated: Yes
Finished: Yes
Enclosed: Yes
Contiguous: Yes
Permitted: Yes
Wet space: No
Addition: No
Conversion: No

423 Braddock Street, Elim, Johnstown, Cambria County,
Pennsylvania, United States, 15905

12 Floor 2 - Hall



Max Dimensions: 9'11" x 2'10"
Calculated Area: 28 sq. ft
Included: Yes

Heated: Yes
Finished: Yes
Enclosed: Yes
Contiguous: Yes
Permitted: Yes
Wet space: No
Addition: No
Conversion: No

13 Floor 2 - Bath



Max Dimensions: 9'11" x 4'7"
Calculated Area: 44 sq. ft
Included: Yes

Heated: Yes
Finished: Yes
Enclosed: Yes
Contiguous: Yes
Permitted: Yes
Wet space: Yes
Addition: No
Conversion: No

14 Floor 2 - Bedroom



Max Dimensions: 14'10" x 11'0"
Calculated Area: 151 sq. ft
Included: Yes

Heated: Yes
Finished: Yes
Enclosed: Yes
Contiguous: Yes
Permitted: Yes
Wet space: No
Addition: No
Conversion: No

Home report

423 Braddock Street, Elim, Johnstown, Cambria County,
Pennsylvania, United States, 15905

15 Floor 2 - Bath



Max Dimensions: 6'3" x 8'3"
Calculated Area: 51 sq. ft
Included: Yes

Heated: Yes
Finished: Yes
Enclosed: Yes
Contiguous: Yes
Permitted: Yes
Wet space: Yes
Addition: No
Conversion: No

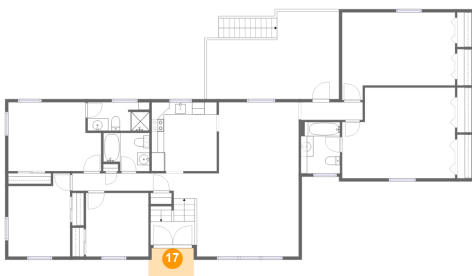
16 Floor 2 - Bedroom



Max Dimensions: 9'11" x 13'3"
Calculated Area: 117 sq. ft
Included: Yes

Heated: Yes
Finished: Yes
Enclosed: Yes
Contiguous: Yes
Permitted: Yes
Wet space: No
Addition: No
Conversion: No

17 Floor 2 - Porch

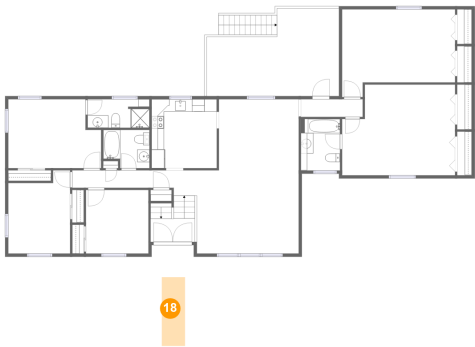


Max Dimensions: 7'3" x 5'1"
Calculated Area: 36 sq. ft
Included: No

Heated: No
Finished: Yes
Enclosed: No
Contiguous: Yes
Permitted: Yes
Wet space: No
Addition: No
Conversion: No

423 Braddock Street, Elim, Johnstown, Cambria County,
Pennsylvania, United States, 15905

18 Floor 2 - Sidewalk



Max Dimensions: 3'9" x 11'0"
Calculated Area: 41 sq. ft
Included: No

Heated: No
Finished: Yes
Enclosed: No
Contiguous: Yes
Permitted: Yes
Wet space: No
Addition: No
Conversion: No

19 Floor 2 - Bath



Max Dimensions: 7'5" x 6'1"
Calculated Area: 41 sq. ft
Included: Yes

Heated: Yes
Finished: Yes
Enclosed: Yes
Contiguous: Yes
Permitted: Yes
Wet space: Yes
Addition: No
Conversion: No

20 Floor 2 - Bedroom

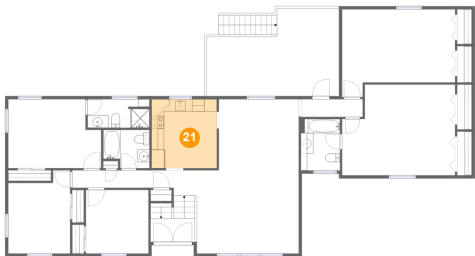


Max Dimensions: 18'1" x 14'0"
Calculated Area: 218 sq. ft
Included: Yes

Heated: Yes
Finished: Yes
Enclosed: Yes
Contiguous: Yes
Permitted: Yes
Wet space: No
Addition: No
Conversion: No

423 Braddock Street, Elim, Johnstown, Cambria County,
Pennsylvania, United States, 15905

21 Floor 2 - Kitchen



Max Dimensions: 10'5" x 11'0"
Calculated Area: 115 sq. ft
Included: Yes

Heated: Yes
Finished: Yes
Enclosed: Yes
Contiguous: Yes
Permitted: Yes
Wet space: No
Addition: No
Conversion: No

22 Floor 2 - Living Room



Max Dimensions: 16'3" x 13'3"
Calculated Area: 216 sq. ft
Included: Yes

Heated: Yes
Finished: Yes
Enclosed: Yes
Contiguous: Yes
Permitted: Yes
Wet space: No
Addition: No
Conversion: No

23 Floor 2 - Foyer



Max Dimensions: 7'1" x 3'9"
Calculated Area: 55 sq. ft
Included: Yes

Heated: Yes
Finished: Yes
Enclosed: Yes
Contiguous: Yes
Permitted: Yes
Wet space: No
Addition: No
Conversion: No

423 Braddock Street, Elim, Johnstown, Cambria County,
Pennsylvania, United States, 15905

24 Floor 2 - Hall



Max Dimensions: 19'11" x 2'10"
Calculated Area: 56 sq. ft
Included: Yes

Heated: Yes
Finished: Yes
Enclosed: Yes
Contiguous: Yes
Permitted: Yes
Wet space: No
Addition: No
Conversion: No

25 Floor 2 - Deck



Max Dimensions: 21'2" x 14'0"
Calculated Area: 245 sq. ft
Included: No

Heated: No
Finished: Yes
Enclosed: No
Contiguous: Yes
Permitted: Yes
Wet space: No
Addition: No
Conversion: No