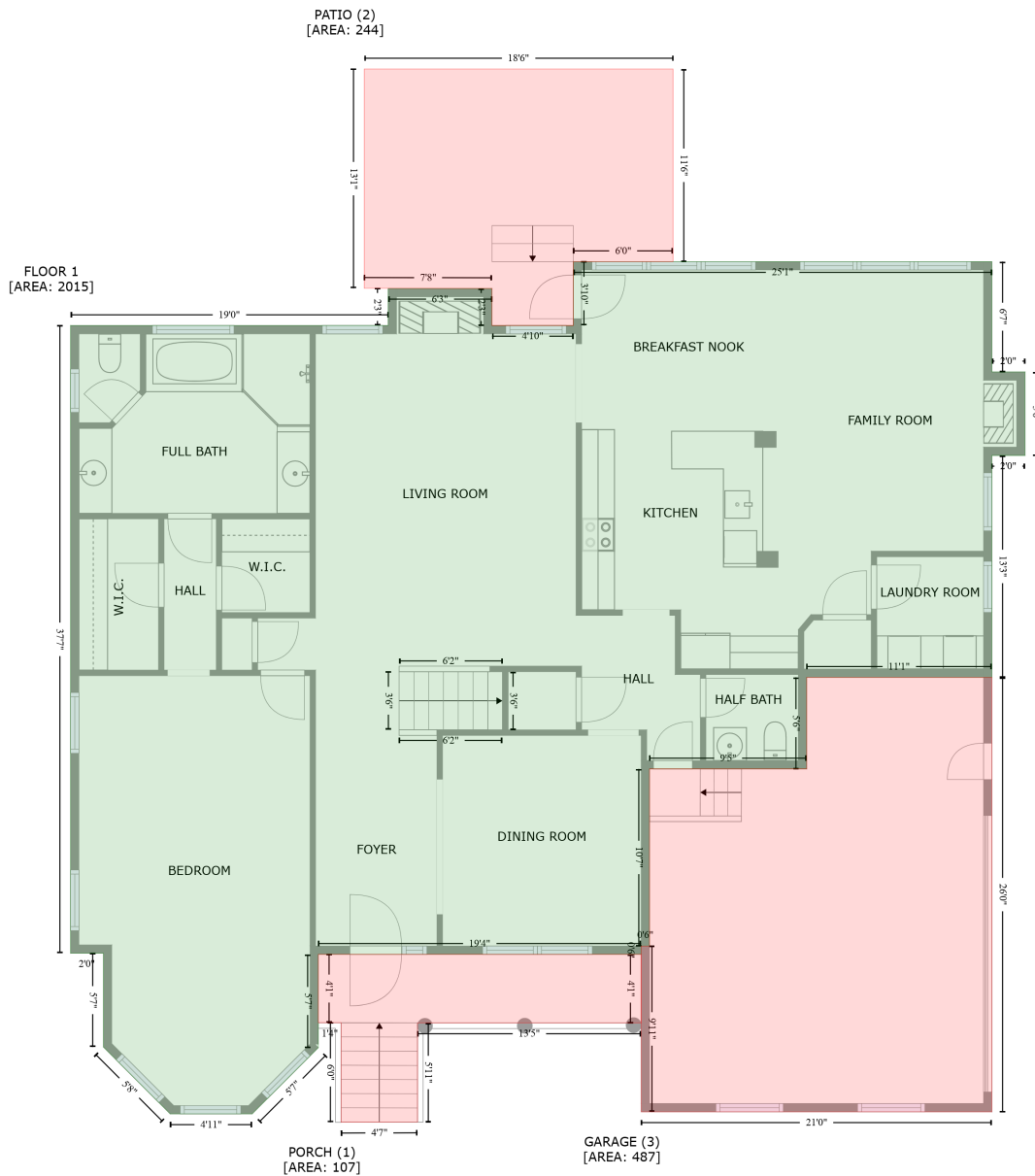


4024 Gum Leaf Drive, Apex, Wake County, North Carolina, United States, 27539

Gross Living Area: 2890 sq. ft



Space

Area (sq. ft)

Calculation Coordinate Polygon Area Algorithm using inches

FLOOR 1
(Living area)

2015

$-\left((665.4 + 665.4) * (835.7 - 914.9) + (665.4 + 689.3) * (914.9 - 914.9) + (689.3 + 689.3) * (914.9 - 974.9) + (689.3 + 665.4) * (974.9 - 974.9) + (665.4 + 665.4) * (974.9 - 1134.3) + (665.4 + 532.3) * (1134.3 - 1134.3) + (532.3 + 532.3) * (1134.3 - 1200) + (532.3 + 419.3) * (1200 - 1200) + (419.3 + 419.3) * (1200 - 1327.2) + (419.3 + 413.3) * (1327.2 - 1327.2) + (413.3 + 413.3) * (1327.2 - 1333.2) + (413.3 + 181.2) * (1333.2 - 1333.2) + (181.2 + 181.2) * (1333.2 - 1400.1) + (181.2 + 133.6) * (1400.1 - 1447.7) + (133.6 + 74.7) * (1447.7 - 1447.7) + (74.7 + 26.7) * (1447.7 - 1399.7) + (26.7 + 26.7) * (1399.7 - 1332.4) + (26.7 + 3.1) * (1332.4 - 1332.4) + (3.1 + 3.1) * (1332.4 - 1332.4)\right)$

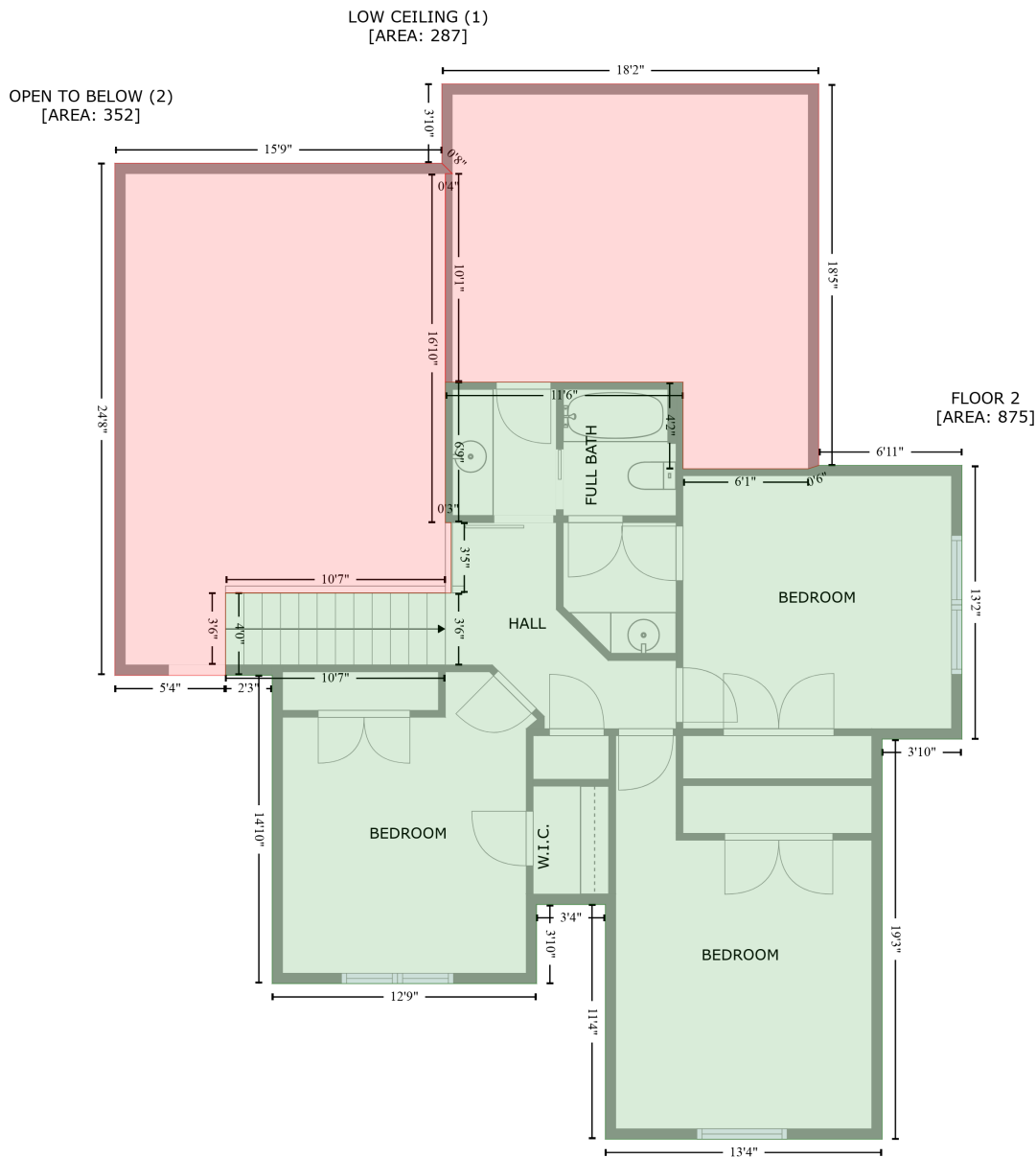
4024 Gum Leaf Drive, Apex, Wake County, North Carolina, United States, 27539

Gross Living Area: 2890 sq. ft

Space	Area (sq. ft)	Calculation <small>Coordinate Polygon Area Algorithm using inches</small>
		$881.6 + (3.1 + 231.4) * (881.6 - 881.6) + (231.4 + 231.4) * (881.6 - 855) + (231.4 + 306) * (855 - 855) + (306 + 306) * (855 - 881.6) + (306 + 364.5) * (881.6 - 881.6) + (364.5 + 364.5) * (881.6 - 835.7) + (364.5 + 665.4) * (835.7 - 835.7) * 0.5 * 0.00694$
PORCH (Non-living area)	107	$-((413.3 + 413.3) * (1333.2 - 1382.4) + (413.3 + 252.5) * (1382.4 - 1382.4) + (252.5 + 252.5) * (1382.4 - 1453.6) + (252.5 + 197.6) * (1453.6 - 1453.8) + (197.6 + 197.6) * (1453.8 - 1382.3) + (197.6 + 181.2) * (1382.3 - 1382.3) + (181.2 + 181.2) * (1382.3 - 1333.2) + (181.2 + 413.3) * (1333.2 - 1333.2)) * 0.5 * 0.00694$
PATIO (Non-living area)	244	$-((436.2 + 436.2) * (697.4 - 835.7) + (436.2 + 364.5) * (835.7 - 835.7) + (364.5 + 364.5) * (835.7 - 881.6) + (364.5 + 306) * (881.6 - 881.6) + (306 + 306) * (881.6 - 855) + (306 + 214.2) * (855 - 854.9) + (214.2 + 214.2) * (854.9 - 697.4) + (214.2 + 436.2) * (697.4 - 697.4)) * 0.5 * 0.00694$
GARAGE (Non-living area)	487	$-((665.4 + 665.4) * (1134.3 - 1446.3) + (665.4 + 413.3) * (1446.3 - 1446.3) + (413.3 + 413.3) * (1446.3 - 1327.2) + (413.3 + 419.3) * (1327.2 - 1327.2) + (419.3 + 419.3) * (1327.2 - 1200) + (419.3 + 532.3) * (1200 - 1200) + (532.3 + 532.3) * (1200 - 1134.3) + (532.3 + 665.4) * (1134.3 - 1134.3)) * 0.5 * 0.00694$

4024 Gum Leaf Drive, Apex, Wake County, North Carolina, United States, 27539

Gross Living Area: 2890 sq. ft



Space

Area (sq. ft)

Calculation Coordinate Polygon Area Algorithm using inches

FLOOR 2
(Living area)

875

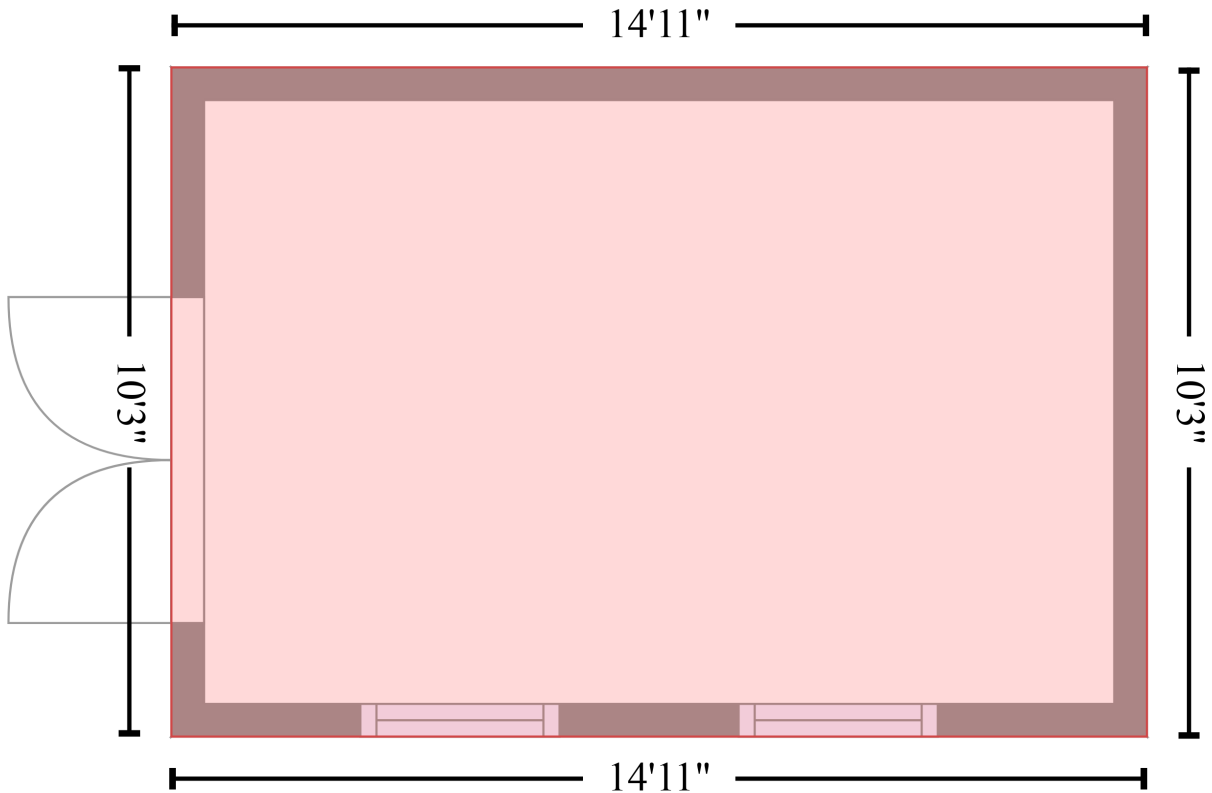
$-\left((504 + 504) * (1008.3 - 1058.4) + (504 + 576.6) * (1058.4 - 1058.4) + (576.6 + 582.6) * (1058.4 - 1056.4) + (582.6 + 665.4) * (1056.4 - 1056.4) + (665.4 + 665.4) * (1056.4 - 1214.8) + (665.4 + 619.3) * (1214.8 - 1214.8) + (619.3 + 619.3) * (1214.8 - 1446.3) + (619.3 + 459.1) * (1446.3 - 1446.3) + (459.1 + 459.1) * (1446.3 - 1310.5) + (459.1 + 419.3) * (1310.5 - 1310.5) + (419.3 + 419.3) * (1310.5 - 1356.3) + (419.3 + 266.3) * (1356.3 - 1356.3) + (266.3 + 266.3) * (1356.3 - 1177.9) + (266.3 + 239.3) * (1177.9 - 1177.9) + (239.3 + 239.3) * (1177.9 - 1130.2) + (239.3 + 369.7) * (1130.2 - 1130.3) + (369.7 + 369.7) * (1130.3 - 1089.5) + (369.7 + 366.5) * (1089.5 -$

4024 Gum Leaf Drive, Apex, Wake County, North Carolina, United States, 27539

Gross Living Area: 2890 sq. ft

Space	Area (sq. ft)	Calculation <small>Coordinate Polygon Area Algorithm using inches</small>
		$1089.5 + (366.5 + 366.5) * (1089.5 - 1008.3) + (366.5 + 504) * (1008.3 - 1008.3)) * 0.5 * 0.00694$
LOW CEILING (Non-living area)	287	$-((582.6 + 582.6) * (835.7 - 1056.4) + (582.6 + 576.6) * (1056.4 - 1058.4) + (576.6 + 504) * (1058.4 - 1058.4) + (504 + 504) * (1058.4 - 1008.3) + (504 + 366.5) * (1008.3 - 1008.3) + (366.5 + 366.5) * (1008.3 - 887.6) + (366.5 + 370.5) * (887.6 - 887.6) + (370.5 + 364.5) * (887.6 - 881.6) + (364.5 + 364.5) * (881.6 - 835.7) + (364.5 + 582.6) * (835.7 - 835.7)) * 0.5 * 0.00694$
OPEN TO BELOW (Non-living area)	352	$-((364.5 + 370.5) * (881.6 - 887.6) + (370.5 + 366.5) * (887.6 - 887.6) + (366.5 + 366.5) * (887.6 - 1089.5) + (366.5 + 369.7) * (1089.5 - 1089.5) + (369.7 + 369.7) * (1089.5 - 1130.3) + (369.7 + 239.3) * (1130.3 - 1130.2) + (239.3 + 239.3) * (1130.2 - 1177.9) + (239.3 + 175.2) * (1177.9 - 1177.9) + (175.2 + 175.2) * (1177.9 - 881.6) + (175.2 + 364.5) * (881.6 - 881.6)) * 0.5 * 0.00694$

STORAGE (1)
[AREA: 152]



Space	Area (sq. ft)	Calculation <small>Coordinate Polygon Area Algorithm using inches</small>
STORAGE (Non-living area)	152	$-((1206.4 + 1206.4) * (125.5 - 248.2) + (1206.4 + 1027.5) * (248.2 - 248.2) + (1027.5 + 1027.5) * (248.2 - 125.5) + (1027.5 + 1206.4) * (125.5 - 125.5)) * 0.5 * 0.00694$