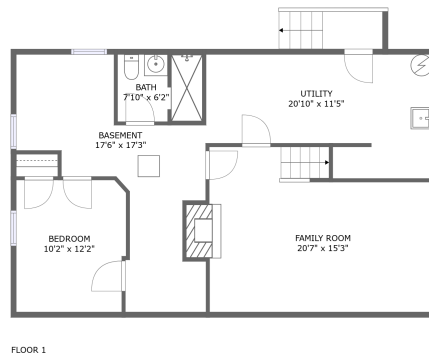
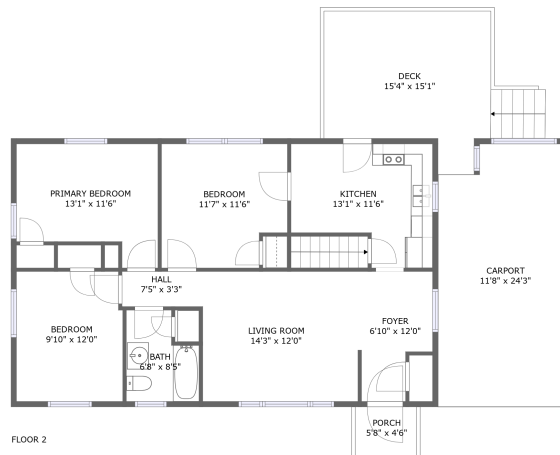



549 Parkdale Drive, Forest Lawn, Salem, Salem, Virginia, United States, 24153



Property summary

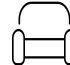
 **0** Garages

 **4** Bedrooms

 **2** Bathrooms

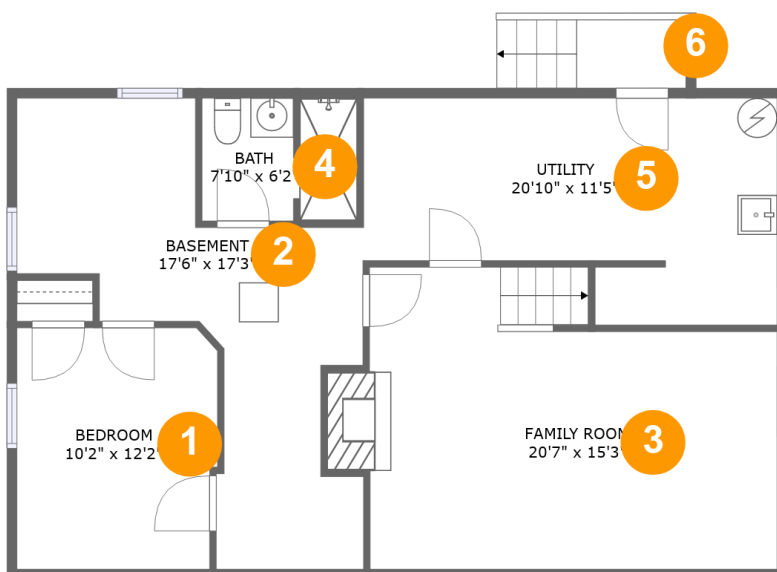
 **0** Half baths

 **2** Floors

 **1,451**
Gross living
area sqft

 **2,453**
Total sqft

**549 Parkdale Drive, Forest Lawn, Salem, Salem,
Virginia, United States, 24153**



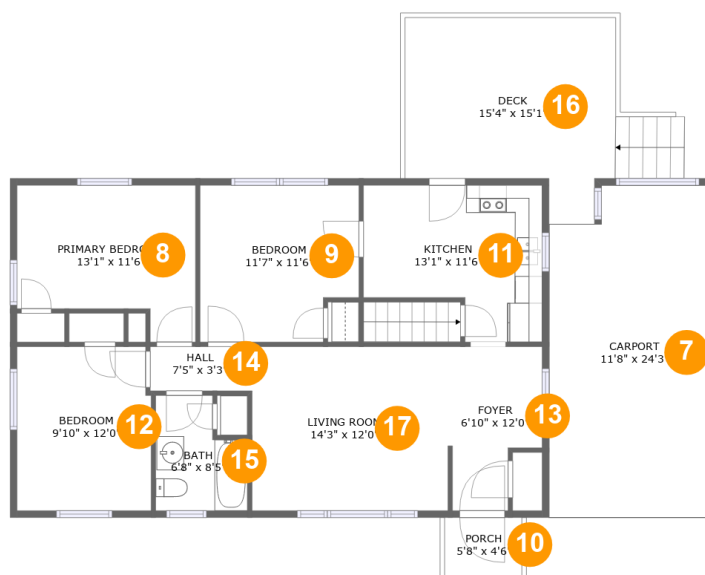
Room dimensions

Floor 1

Total sqft: 979 Living area: 474

#		Dimensions	sqft	Counted as living area
1	Bedroom	10'2" x 12'2"	121 sq. ft	No
2	Basement	17'6" x 17'3"	210 sq. ft	Yes
3	Living Room	20'7" x 15'3"	293 sq. ft	No
4	Bath	7'10" x 6'2"	47 sq. ft	No
5	Utility	20'10" x 11'5"	200 sq. ft	Yes
6	Outdoor	5'6" x 3'5"	19 sq. ft	No

549 Parkdale Drive, Forest Lawn, Salem, Salem, Virginia, United States, 24153



Room dimensions

Floor 2

Total sqft: 1474 Living area: 977

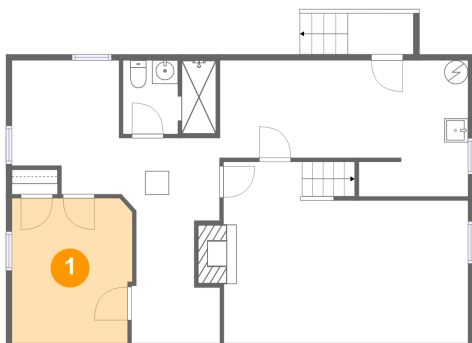
#		Dimensions	sqft	Counted as living area
7	Carport	11'8" x 24'3"	273 sq. ft	No
8	Bedroom	13'1" x 11'6"	126 sq. ft	Yes
9	Bedroom	11'7" x 11'6"	125 sq. ft	Yes
10	Outdoor	5'8" x 4'6"	25 sq. ft	No
11	Kitchen	13'1" x 11'6"	126 sq. ft	Yes
12	Bedroom	9'10" x 12'0"	116 sq. ft	Yes
13	Entry	6'10" x 12'0"	70 sq. ft	Yes
14	Hall	7'5" x 3'3"	24 sq. ft	Yes
15	Bath	6'8" x 8'5"	48 sq. ft	Yes
16	Outdoor	15'4" x 15'1"	192 sq. ft	No
17	Living Room	14'3" x 12'0"	172 sq. ft	Yes

Scan captured on Mon, 30 Dec 2024 16:50:52 GMT

Information is calculated by Cubicasa technology deemed highly reliable but not guaranteed.

549 Parkdale Drive, Forest Lawn, Salem, Salem, Virginia, United States, 24153

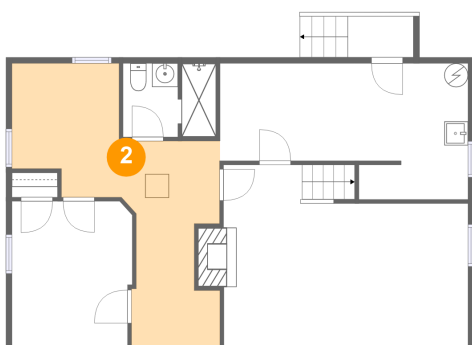
1 Floor 1 - Bedroom



Dimensions: 10'2" x 12'2"
Area: 121 sq. ft
Counted as living area: No

Heated: Yes
Finished: Yes
Enclosed: Yes
Contiguous: No
Permitted: Yes
Wet space: No
Addition: No
Conversion: No

2 Floor 1 - Basement

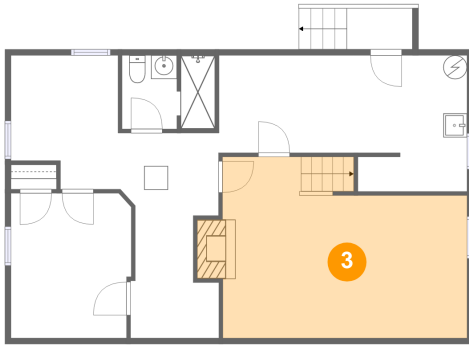


Dimensions: 17'6" x 17'3"
Area: 210 sq. ft
Counted as living area: Yes

Heated: Yes
Finished: Yes
Enclosed: Yes
Contiguous: Yes
Permitted: Yes
Wet space: No
Addition: No
Conversion: No

**549 Parkdale Drive, Forest Lawn, Salem, Salem,
Virginia, United States, 24153**

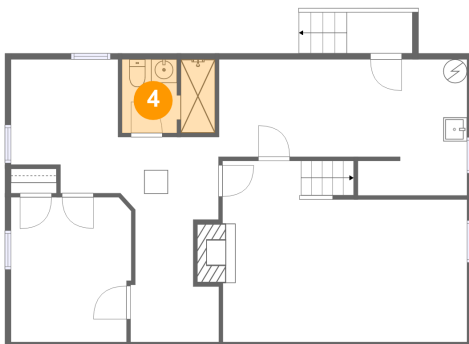
3 Floor 1 - Living Room



Dimensions: 20'7" x 15'3"
Area: 293 sq. ft
Counted as living area: No

Heated: Yes
Finished: Yes
Enclosed: Yes
Contiguous: No
Permitted: Yes
Wet space: No
Addition: No
Conversion: No

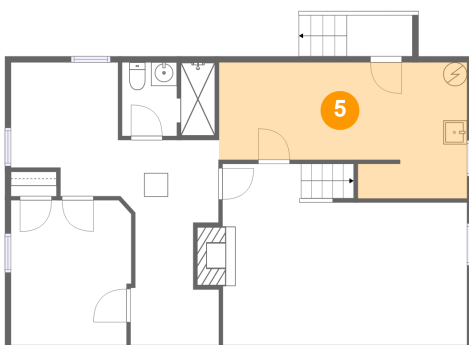
4 Floor 1 - Bath



Dimensions: 7'10" x 6'2"
Area: 47 sq. ft
Counted as living area: No

Heated: Yes
Finished: Yes
Enclosed: Yes
Contiguous: No
Permitted: Yes
Wet space: Yes
Addition: No
Conversion: No

5 Floor 1 - Utility

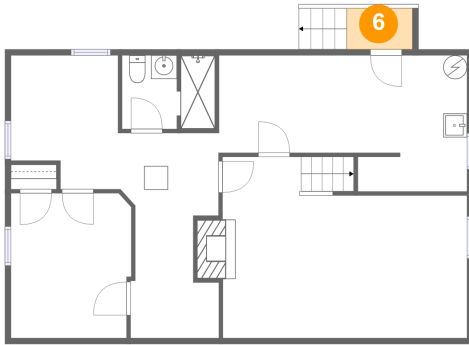


Dimensions: 20'10" x 11'5"
Area: 200 sq. ft
Counted as living area: Yes

Heated: Yes
Finished: Yes
Enclosed: Yes
Contiguous: Yes
Permitted: Yes
Wet space: No
Addition: No
Conversion: No

**549 Parkdale Drive, Forest Lawn, Salem, Salem,
Virginia, United States, 24153**

6 Floor 1 - Outdoor



Dimensions: 5'6" x 3'5"
Area: 19 sq. ft
Counted as living area: No

Heated: No
Finished: No
Enclosed: No
Contiguous: Yes
Permitted: No
Wet space: No
Addition: No
Conversion: No

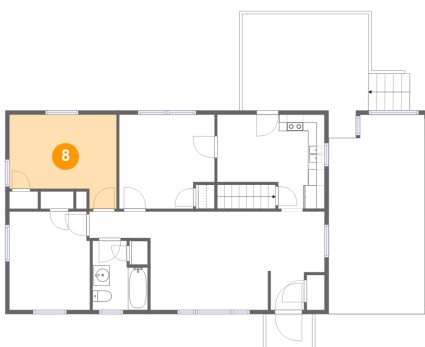
7 Floor 2 - Carport



Dimensions: 11'8" x 24'3"
Area: 273 sq. ft
Counted as living area: No

Heated: No
Finished: Yes
Enclosed: No
Contiguous: Yes
Permitted: Yes
Wet space: No
Addition: No
Conversion: No

8 Floor 2 - Bedroom

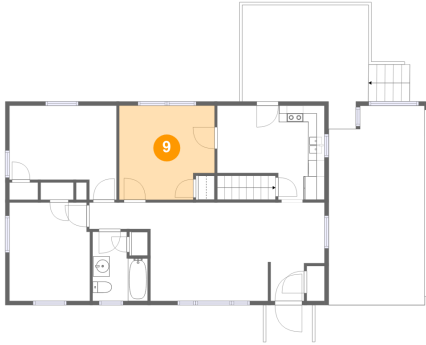


Dimensions: 13'1" x 11'6"
Area: 126 sq. ft
Counted as living area: Yes

Heated: Yes
Finished: Yes
Enclosed: Yes
Contiguous: Yes
Permitted: Yes
Wet space: No
Addition: No
Conversion: No

**549 Parkdale Drive, Forest Lawn, Salem, Salem,
Virginia, United States, 24153**

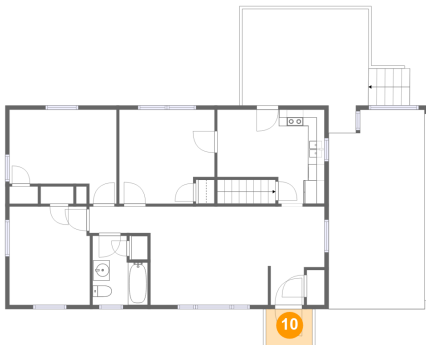
9 Floor 2 - Bedroom



Dimensions: 11'7" x 11'6"
Area: 125 sq. ft
Counted as living area: Yes

Heated: Yes
Finished: Yes
Enclosed: Yes
Contiguous: Yes
Permitted: Yes
Wet space: No
Addition: No
Conversion: No

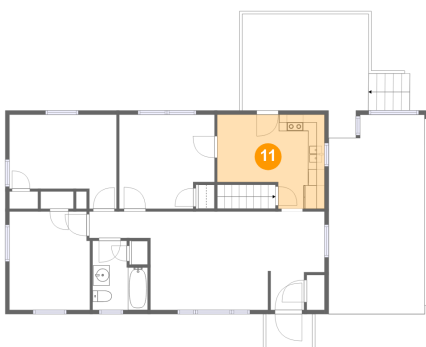
10 Floor 2 - Outdoor



Dimensions: 5'8" x 4'6"
Area: 25 sq. ft
Counted as living area: No

Heated: No
Finished: Yes
Enclosed: No
Contiguous: Yes
Permitted: Yes
Wet space: No
Addition: No
Conversion: No

11 Floor 2 - Kitchen

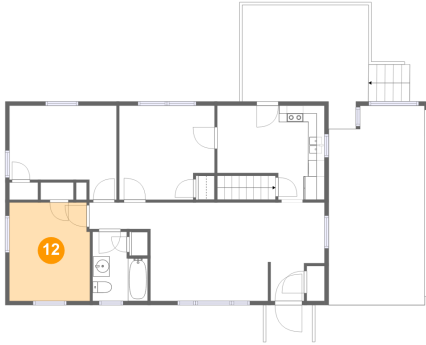


Dimensions: 13'1" x 11'6"
Area: 126 sq. ft
Counted as living area: Yes

Heated: Yes
Finished: Yes
Enclosed: Yes
Contiguous: Yes
Permitted: Yes
Wet space: No
Addition: No
Conversion: No

**549 Parkdale Drive, Forest Lawn, Salem, Salem,
Virginia, United States, 24153**

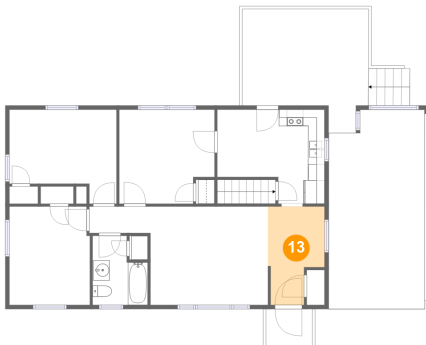
12 Floor 2 - Bedroom



Dimensions: 9'10" x 12'0"
Area: 116 sq. ft
Counted as living area: Yes

Heated: Yes
Finished: Yes
Enclosed: Yes
Contiguous: Yes
Permitted: Yes
Wet space: No
Addition: No
Conversion: No

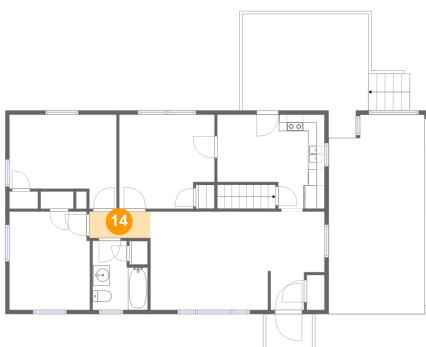
13 Floor 2 - Entry



Dimensions: 6'10" x 12'0"
Area: 70 sq. ft
Counted as living area: Yes

Heated: Yes
Finished: Yes
Enclosed: Yes
Contiguous: Yes
Permitted: Yes
Wet space: No
Addition: No
Conversion: No

14 Floor 2 - Hall

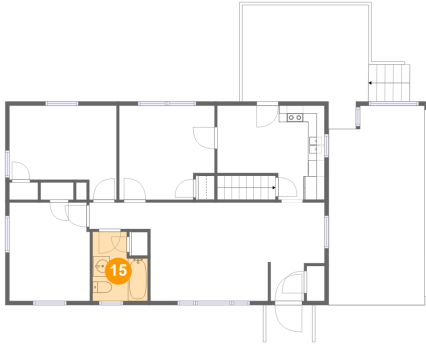


Dimensions: 7'5" x 3'3"
Area: 24 sq. ft
Counted as living area: Yes

Heated: Yes
Finished: Yes
Enclosed: Yes
Contiguous: Yes
Permitted: Yes
Wet space: No
Addition: No
Conversion: No

**549 Parkdale Drive, Forest Lawn, Salem, Salem,
Virginia, United States, 24153**

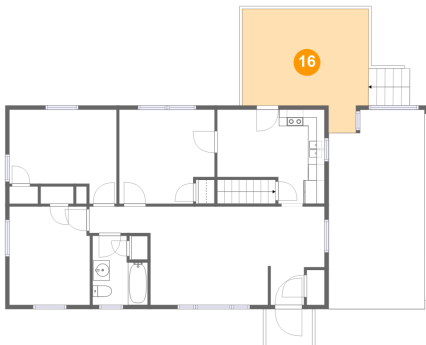
15 Floor 2 - Bath



Dimensions: 6'8" x 8'5"
Area: 48 sq. ft
Counted as living area: Yes

Heated: Yes
Finished: Yes
Enclosed: Yes
Contiguous: Yes
Permitted: Yes
Wet space: Yes
Addition: No
Conversion: No

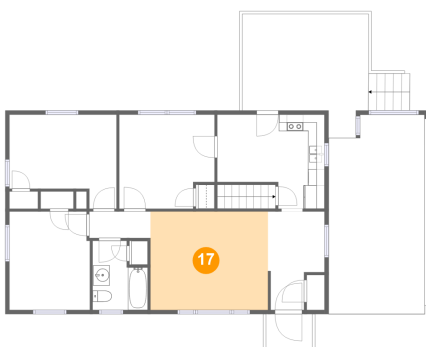
16 Floor 2 - Outdoor



Dimensions: 15'4" x 15'1"
Area: 192 sq. ft
Counted as living area: No

Heated: No
Finished: Yes
Enclosed: No
Contiguous: Yes
Permitted: Yes
Wet space: No
Addition: No
Conversion: No

17 Floor 2 - Living Room



Dimensions: 14'3" x 12'0"
Area: 172 sq. ft
Counted as living area: Yes

Heated: Yes
Finished: Yes
Enclosed: Yes
Contiguous: Yes
Permitted: Yes
Wet space: No
Addition: No
Conversion: No