

12400 201 Street

Maple Ridge BC V2X 6A7

Main Level Area: 1,203 SQ.FT.

Upper Level Area: 1,470 SQ.FT.

Total Area 2,673 SQ.FT.

Crawlspace Area: 1,930 SQ.FT.

4



BEDROOMS

4

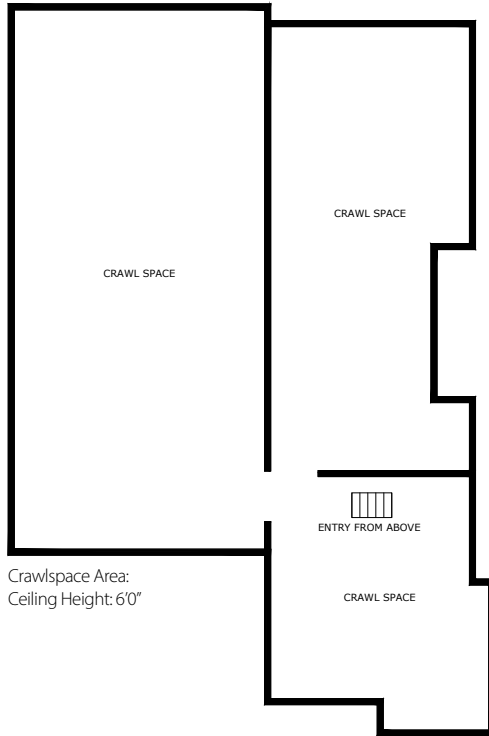


BATHROOMS

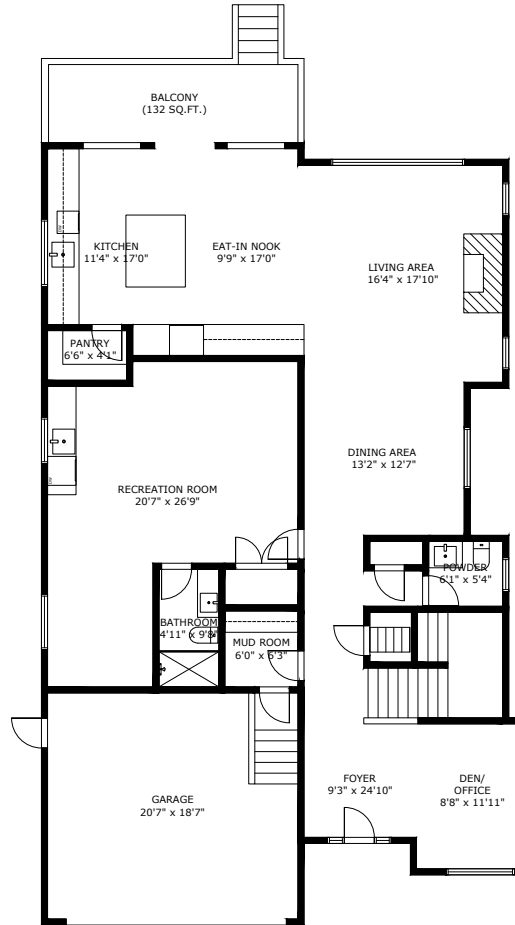
2,673



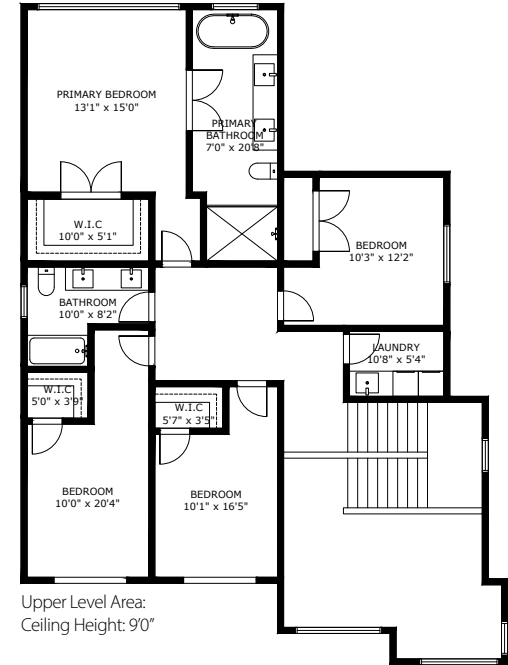
TOTAL SQ.FT.



Crawlspace Area:
Ceiling Height: 6'0"



Main Level Area:
Ceiling Height: 10'0"



Upper Level Area:
Ceiling Height: 9'0"

12400 201 ST MAPLE RIDGE BC V2X 6A7

Measurements are approximate and may not be to scale. Gross measurements provided by agent.
The floor plan illustration is not suitable for construction/architectural purposes.
This communication is not intended to cause or induce breach of an existing agency agreement

3D IMMERSIVE
Tours Photos Floor Plans

Professionally measured by 3D Immersive Marketing Ltd.

Lead Floor Planner: *Sara Alexander*
Quality Assurance: *Dianne Graham*