

Home data report

6015 Dark Hollow Rd,Medford,OR,US



Total Area: 4023 sq. ft

1st Floor: 1983 sq. ft, 2nd Floor: 2040 sq. ft

Excluded: Garage 526 sq. ft, Covered deck 823 sq. ft, Deck 259 sq. ft, Patio 530 sq. ft, Porch 468 sq. ft, Open to below 272 sq. ft, Low ceiling 24 sq. ft, Walls: 325 sq. ft

Property summary

**2** Floors

**3** Bedrooms

**4** Bathrooms

Home data report

6015 Dark Hollow Rd,Medford,OR,US



1
Half baths



1
Garages

Home data report

6015 Dark Hollow Rd,Medford,OR,US



Room dimensions

Floor 1 Total:1983sqft Excluded: 2606sqft

#		Dimensions	sqft	Counted as living area
1	Bath	3'1" x 7'10"	24 sq. ft	Yes
2	Patio	34'0" x 22'7"	530 sq. ft	No
3	Bath	9'8" x 12'6"	120 sq. ft	Yes
4	Deck	8'3" x 37'11"	259 sq. ft	No
5	Pantry	7'0" x 5'1"	36 sq. ft	Yes
6	Porch	44'8" x 10'6"	468 sq. ft	No
7	Covered Deck	6'6" x 64'11"	424 sq. ft	No
8	Kitchen	11'4" x 23'10"	253 sq. ft	Yes
9	Dining Area	13'6" x 14'7"	193 sq. ft	Yes
10	Entry	12'2" x 12'9"	113 sq. ft	Yes
11	Breakfast Nook	8'3" x 14'7"	120 sq. ft	Yes

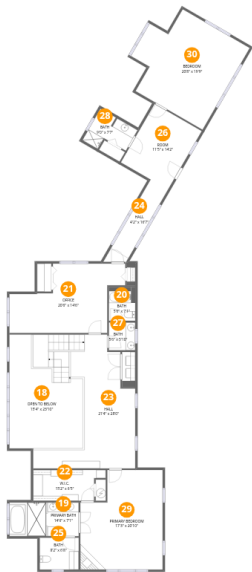
Home data report

6015 Dark Hollow Rd,Medford,OR,US

#		Dimensions	sqft	Counted as living area
12	Garage	20'8" x 25'5"	526 sq. ft	No
13	Bedroom	16'4" x 14'6"	229 sq. ft	Yes
14	Covered Deck	10'10" x 65'0"	399 sq. ft	No
15	Foyer	10'4" x 13'1"	150 sq. ft	Yes
16	Living Room	21'7" x 34'7"	637 sq. ft	Yes
17	W.I.C.	9'2" x 8'9"	55 sq. ft	Yes

Home data report

6015 Dark Hollow Rd,Medford,OR,US



Room dimensions

Floor 2 Total:2040sqft Excluded: 296sqft

#		Dimensions	sqft	Counted as living area
18	Open To Below	15'4" x 23'10"	272 sq. ft	No
19	Primary Bath	14'6" x 7'1"	102 sq. ft	Yes
20	Bath	5'6" x 7'1"	39 sq. ft	Yes
21	Office	20'6" x 14'6"	257 sq. ft	Yes
22	W.I.C.	15'2" x 6'5"	86 sq. ft	Yes
23	Hall	21'4" x 28'0"	395 sq. ft	Yes
24	Hall	4'2" x 16'7"	78 sq. ft	Yes
25	Bath	8'2" x 6'8"	54 sq. ft	Yes
26	Room	11'5" x 14'2"	161 sq. ft	Yes
27	Bath	5'6" x 5'10"	32 sq. ft	Yes
28	Bath	9'0" x 7'7"	54 sq. ft	Yes

Home data report

6015 Dark Hollow Rd,Medford,OR,US

#		Dimensions	sqft	Counted as living area
29	Primary Bedroom	17'3" x 20'10"	320 sq. ft	Yes
30	Bedroom	20'8" x 19'9"	334 sq. ft	Yes

1 Floor 1 - Bath



Dimensions: 3'1" x 7'10"
Area: 24 sq. ft
Counted as living area: Yes

Heated: Yes
Finished: Yes
Enclosed: Yes
Contiguous: Yes
Permitted: Yes
Wet space: Yes
Addition: No
Conversion: No

2 Floor 1 - Patio



Dimensions: 34'0" x 22'7"
Area: 530 sq. ft
Counted as living area: No

Heated: No
Finished: No
Enclosed: No
Contiguous: Yes
Permitted: Yes
Wet space: No
Addition: No
Conversion: No

3 Floor 1 - Bath



Dimensions: 9'8" x 12'6"
Area: 120 sq. ft
Counted as living area: Yes

Heated: Yes
Finished: Yes
Enclosed: Yes
Contiguous: Yes
Permitted: Yes
Wet space: Yes
Addition: No
Conversion: No

4 Floor 1 - Deck



Dimensions: 8'3" x 37'11"
Area: 259 sq. ft
Counted as living area: No

Heated: No
Finished: No
Enclosed: No
Contiguous: Yes
Permitted: Yes
Wet space: No
Addition: No
Conversion: No

5 Floor 1 - Pantry



Dimensions: 7'0" x 5'1"
Area: 36 sq. ft
Counted as living area: Yes

Heated: Yes
Finished: Yes
Enclosed: Yes
Contiguous: Yes
Permitted: Yes
Wet space: No
Addition: No
Conversion: No

6 Floor 1 - Porch



Dimensions: 44'8" x 10'6"
Area: 468 sq. ft
Counted as living area: No

Heated: No
Finished: No
Enclosed: No
Contiguous: Yes
Permitted: Yes
Wet space: No
Addition: No
Conversion: No

7 Floor 1 - Covered Deck



Dimensions: 6'6" x 64'11"
Area: 424 sq. ft
Counted as living area: No

Heated: No
Finished: No
Enclosed: No
Contiguous: Yes
Permitted: Yes
Wet space: No
Addition: No
Conversion: No

8 Floor 1 - Kitchen



Dimensions: 11'4" x 23'10"
Area: 253 sq. ft
Counted as living area: Yes

Heated: Yes
Finished: Yes
Enclosed: Yes
Contiguous: Yes
Permitted: Yes
Wet space: No
Addition: No
Conversion: No

9 Floor 1 - Dining Area



Dimensions: 13'6" x 14'7"
Area: 193 sq. ft
Counted as living area: Yes

Heated: Yes
Finished: Yes
Enclosed: Yes
Contiguous: Yes
Permitted: Yes
Wet space: No
Addition: No
Conversion: No

10 Floor 1 - Entry



Dimensions: 12'2" x 12'9"
Area: 113 sq. ft
Counted as living area: Yes

Heated: Yes
Finished: Yes
Enclosed: Yes
Contiguous: Yes
Permitted: Yes
Wet space: No
Addition: No
Conversion: No

11 Floor 1 - Breakfast Nook



Dimensions: 8'3" x 14'7"
Area: 120 sq. ft
Counted as living area: Yes

Heated: Yes
Finished: Yes
Enclosed: Yes
Contiguous: Yes
Permitted: Yes
Wet space: No
Addition: No
Conversion: No

12 Floor 1 - Garage



Dimensions: 20'8" x 25'5"
Area: 526 sq. ft
Counted as living area: No

Heated: No
Finished: No
Enclosed: Yes
Contiguous: Yes
Permitted: Yes
Wet space: No
Addition: No
Conversion: No

13 Floor 1 - Bedroom



Dimensions: 16'4" x 14'6"
Area: 229 sq. ft
Counted as living area: Yes

Heated: Yes
Finished: Yes
Enclosed: Yes
Contiguous: Yes
Permitted: Yes
Wet space: No
Addition: No
Conversion: No

14 Floor 1 - Covered Deck



Dimensions: 10'10" x 65'0"
Area: 399 sq. ft
Counted as living area: No

Heated: No
Finished: No
Enclosed: No
Contiguous: Yes
Permitted: Yes
Wet space: No
Addition: No
Conversion: No

15 Floor 1 - Foyer



Dimensions: 10'4" x 13'1"
Area: 150 sq. ft
Counted as living area: Yes

Heated: Yes
Finished: Yes
Enclosed: Yes
Contiguous: Yes
Permitted: Yes
Wet space: No
Addition: No
Conversion: No

16 Floor 1 - Living Room



Dimensions: 21'7" x 34'7"
Area: 637 sq. ft
Counted as living area: Yes

Heated: Yes
Finished: Yes
Enclosed: Yes
Contiguous: Yes
Permitted: Yes
Wet space: No
Addition: No
Conversion: No

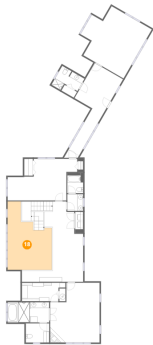
17 Floor 1 - W.I.C.



Dimensions: 9'2" x 8'9"
Area: 55 sq. ft
Counted as living area: Yes

Heated: Yes
Finished: Yes
Enclosed: Yes
Contiguous: Yes
Permitted: Yes
Wet space: No
Addition: No
Conversion: No

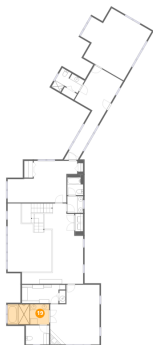
18 Floor 2 - Open To Below



Dimensions: 15'4" x 23'10"
Area: 272 sq. ft
Counted as living area: No

Heated: No
Finished: No
Enclosed: No
Contiguous: Yes
Permitted: No
Wet space: No
Addition: No
Conversion: No

19 Floor 2 - Primary Bath



Dimensions: 14'6" x 7'1"
Area: 102 sq. ft
Counted as living area: Yes

Heated: Yes
Finished: Yes
Enclosed: Yes
Contiguous: Yes
Permitted: Yes
Wet space: Yes
Addition: No
Conversion: No

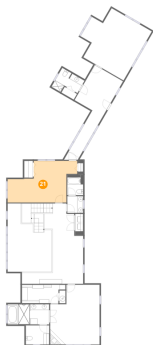
20 Floor 2 - Bath



Dimensions: 5'6" x 7'1"
Area: 39 sq. ft
Counted as living area: Yes

Heated: Yes
Finished: Yes
Enclosed: Yes
Contiguous: Yes
Permitted: Yes
Wet space: Yes
Addition: No
Conversion: No

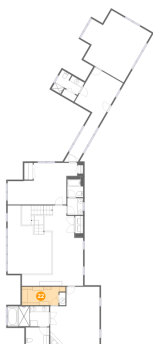
21 Floor 2 - Office



Dimensions: 20'6" x 14'6"
Area: 257 sq. ft
Counted as living area: Yes

Heated: Yes
Finished: Yes
Enclosed: Yes
Contiguous: Yes
Permitted: Yes
Wet space: No
Addition: No
Conversion: No

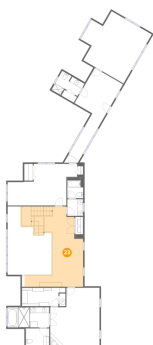
22 Floor 2 - W.I.C.



Dimensions: 15'2" x 6'5"
Area: 86 sq. ft
Counted as living area: Yes

Heated: Yes
Finished: Yes
Enclosed: Yes
Contiguous: Yes
Permitted: Yes
Wet space: No
Addition: No
Conversion: No

23 Floor 2 - Hall



Dimensions: 21'4" x 28'0"
Area: 395 sq. ft
Counted as living area: Yes

Heated: Yes
Finished: Yes
Enclosed: Yes
Contiguous: Yes
Permitted: Yes
Wet space: No
Addition: No
Conversion: No

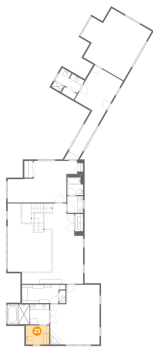
24 Floor 2 - Hall



Dimensions: 4'2" x 16'7"
Area: 78 sq. ft
Counted as living area: Yes

Heated: Yes
Finished: Yes
Enclosed: Yes
Contiguous: Yes
Permitted: Yes
Wet space: No
Addition: No
Conversion: No

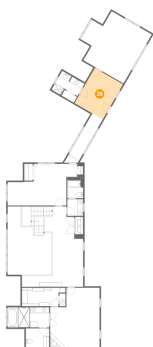
25 Floor 2 - Bath



Dimensions: 8'2" x 6'8"
Area: 54 sq. ft
Counted as living area: Yes

Heated: Yes
Finished: Yes
Enclosed: Yes
Contiguous: Yes
Permitted: Yes
Wet space: Yes
Addition: No
Conversion: No

26 Floor 2 - Room



Dimensions: 11'5" x 14'2"
Area: 161 sq. ft
Counted as living area: Yes

Heated: Yes
Finished: Yes
Enclosed: Yes
Contiguous: Yes
Permitted: Yes
Wet space: No
Addition: No
Conversion: No

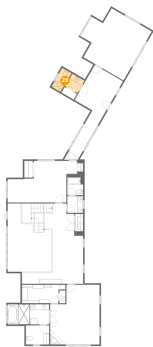
27 Floor 2 - Bath



Dimensions: 5'6" x 5'10"
Area: 32 sq. ft
Counted as living area: Yes

Heated: Yes
Finished: Yes
Enclosed: Yes
Contiguous: Yes
Permitted: Yes
Wet space: Yes
Addition: No
Conversion: No

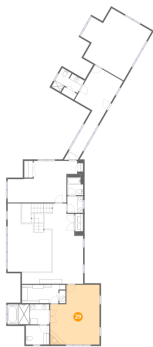
28 Floor 2 - Bath



Dimensions: 9'0" x 7'7"
Area: 54 sq. ft
Counted as living area: Yes

Heated: Yes
Finished: Yes
Enclosed: Yes
Contiguous: Yes
Permitted: Yes
Wet space: Yes
Addition: No
Conversion: No

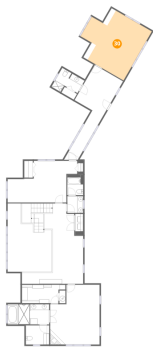
29 Floor 2 - Primary Bedroom



Dimensions: 17'3" x 20'10"
Area: 320 sq. ft
Counted as living area: Yes

Heated: Yes
Finished: Yes
Enclosed: Yes
Contiguous: Yes
Permitted: Yes
Wet space: No
Addition: No
Conversion: No

30 Floor 2 - Bedroom



Dimensions: 20'8" x 19'9"
Area: 334 sq. ft
Counted as living area: Yes

Heated: Yes
Finished: Yes
Enclosed: Yes
Contiguous: Yes
Permitted: Yes
Wet space: No
Addition: No
Conversion: No