

Home data report

249 Villager Rd,Chester,NH,US



Total Area: 2143 sq. ft

Below Ground: 587 sq. ft, 1st Floor: 885 sq. ft, 2nd Floor: 671 sq. ft

Excluded: Utility 167 sq. ft, Garage 459 sq. ft, Deck 110 sq. ft, Porch 77 sq. ft, Low ceiling 12 sq. ft, Walls: 208 sq. ft

Property summary

 **3** Floors

 **2** Bedrooms

 **2** Bathrooms

Home data report

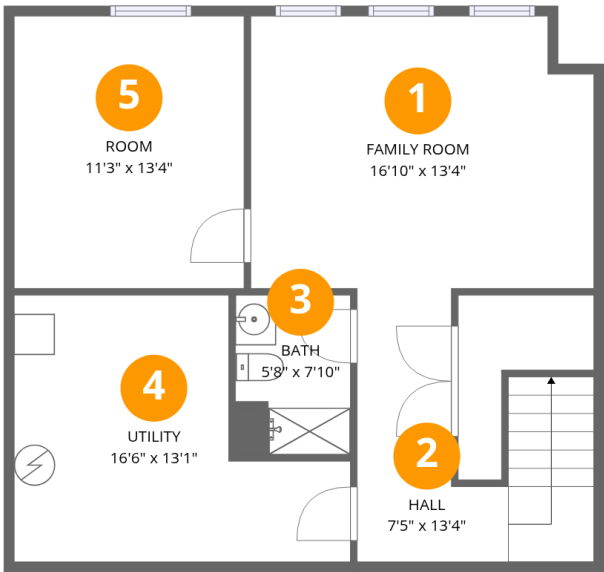
249 Villager Rd,Chester,NH,US

 **1**
Half baths

 **1**
Garages

Home data report

249 Villager Rd,Chester,NH,US



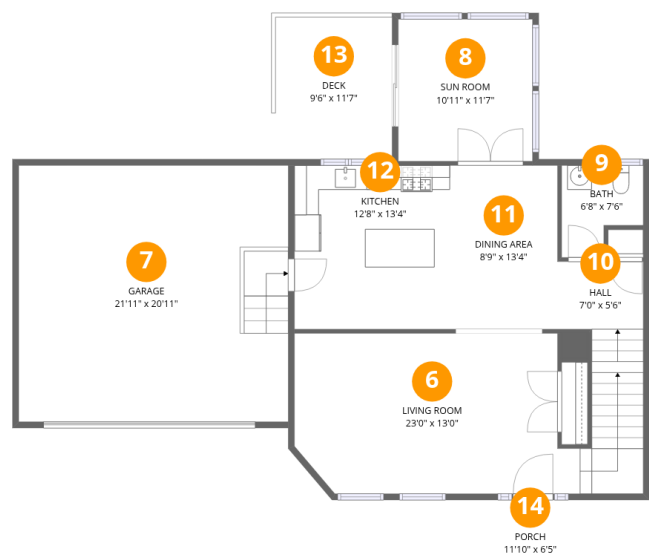
Room dimensions

Floor 1 Below grade Total:587sqft Excluded: 167sqft

#		Dimensions	sqft	Counted as living area
1	Family Room	16'10" x 13'4"	218 sq. ft	Yes
2	Hall	7'5" x 13'4"	110 sq. ft	Yes
3	Bath	5'8" x 7'10"	40 sq. ft	Yes
4	Utility	16'6" x 13'1"	167 sq. ft	No
5	Room	11'3" x 13'4"	150 sq. ft	Yes

Home data report

249 Villager Rd,Chester,NH,US



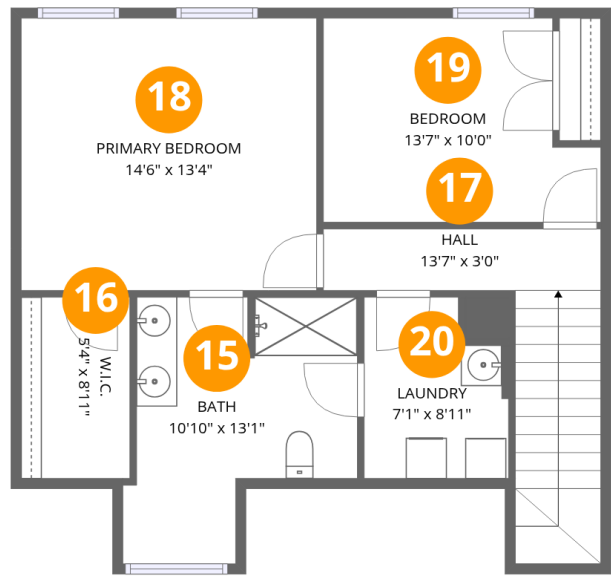
Room dimensions

Floor 2 Total:885sqft Excluded: 646sqft

#		Dimensions	sqft	Counted as living area
6	Living Room	23'0" x 13'0"	301 sq. ft	Yes
7	Garage	21'11" x 20'11"	459 sq. ft	No
8	Sun Room	10'11" x 11'7"	127 sq. ft	Yes
9	Bath	6'8" x 7'6"	42 sq. ft	Yes
10	Hall	7'0" x 5'6"	78 sq. ft	Yes
11	Dining Area	8'9" x 13'4"	117 sq. ft	Yes
12	Kitchen	12'8" x 13'4"	169 sq. ft	Yes
13	Deck	9'6" x 11'7"	110 sq. ft	No
14	Porch	11'10" x 6'5"	77 sq. ft	No

Home data report

249 Villager Rd,Chester,NH,US

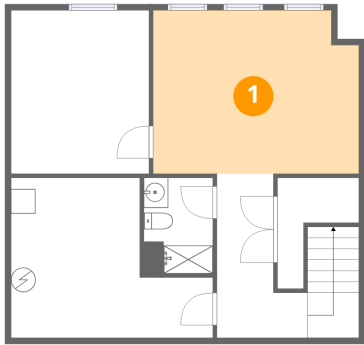


Room dimensions

Floor 3 Total:671sqft Excluded: 12sqft

#		Dimensions	sqft	Counted as living area
15	Bath	10'10" x 13'1"	114 sq. ft	Yes
16	W.I.C.	5'4" x 8'11"	44 sq. ft	Yes
17	Hall	13'7" x 3'0"	97 sq. ft	Yes
18	Primary Bedroom	14'6" x 13'4"	193 sq. ft	Yes
19	Bedroom	13'7" x 10'0"	121 sq. ft	Yes
20	Laundry	7'1" x 8'11"	53 sq. ft	Yes

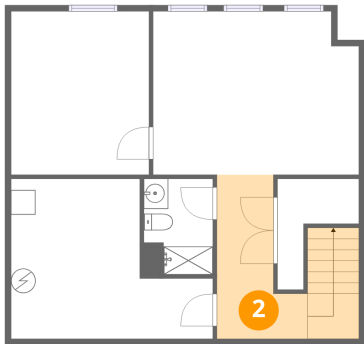
1 Floor 1 - Family Room



Dimensions: 16'10" x 13'4"
Area: 218 sq. ft
Counted as living area: Yes

Heated: Yes
Finished: Yes
Enclosed: Yes
Contiguous: Yes
Permitted: Yes
Wet space: No
Addition: No
Conversion: No

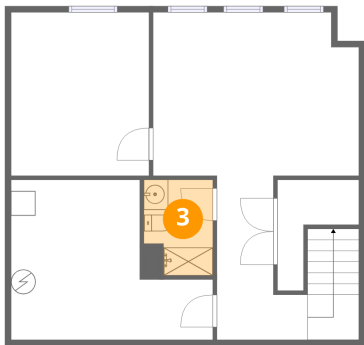
2 Floor 1 - Hall



Dimensions: 7'5" x 13'4"
Area: 110 sq. ft
Counted as living area: Yes

Heated: Yes
Finished: Yes
Enclosed: Yes
Contiguous: Yes
Permitted: Yes
Wet space: No
Addition: No
Conversion: No

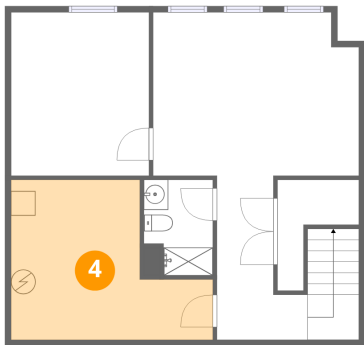
3 Floor 1 - Bath



Dimensions: 5'8" x 7'10"
Area: 40 sq. ft
Counted as living area: Yes

Heated: Yes
Finished: Yes
Enclosed: Yes
Contiguous: Yes
Permitted: Yes
Wet space: Yes
Addition: No
Conversion: No

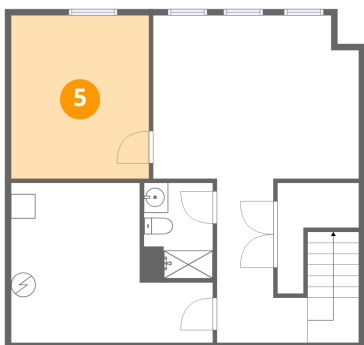
4 Floor 1 - Utility



Dimensions: 16'6" x 13'1"
Area: 167 sq. ft
Counted as living area: No

Heated: Yes
Finished: No
Enclosed: Yes
Contiguous: Yes
Permitted: Yes
Wet space: No
Addition: No
Conversion: No

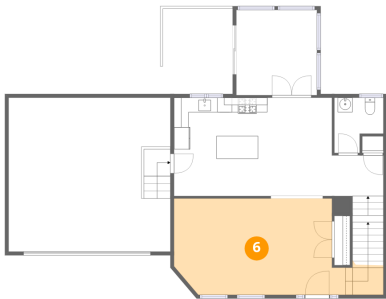
5 Floor 1 - Room



Dimensions: 11'3" x 13'4"
Area: 150 sq. ft
Counted as living area: Yes

Heated: Yes
Finished: Yes
Enclosed: Yes
Contiguous: Yes
Permitted: Yes
Wet space: No
Addition: No
Conversion: No

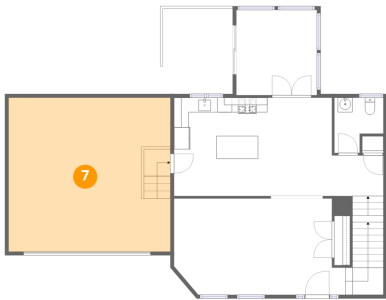
6 Floor 2 - Living Room



Dimensions: 23'0" x 13'0"
Area: 301 sq. ft
Counted as living area: Yes

Heated: Yes
Finished: Yes
Enclosed: Yes
Contiguous: Yes
Permitted: Yes
Wet space: No
Addition: No
Conversion: No

7 Floor 2 - Garage



Dimensions: 21'11" x 20'11"
Area: 459 sq. ft
Counted as living area: No

Heated: No
Finished: No
Enclosed: Yes
Contiguous: Yes
Permitted: Yes
Wet space: No
Addition: No
Conversion: No

8 Floor 2 - Sun Room



Dimensions: 10'11" x 11'7"
Area: 127 sq. ft
Counted as living area: Yes

Heated: Yes
Finished: Yes
Enclosed: Yes
Contiguous: Yes
Permitted: Yes
Wet space: No
Addition: No
Conversion: No

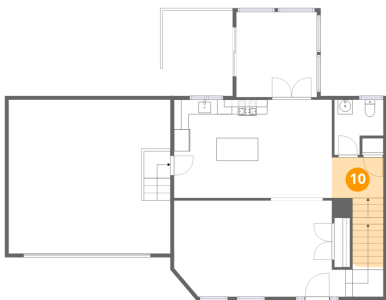
9 Floor 2 - Bath



Dimensions: 6'8" x 7'6"
Area: 42 sq. ft
Counted as living area: Yes

Heated: Yes
Finished: Yes
Enclosed: Yes
Contiguous: Yes
Permitted: Yes
Wet space: Yes
Addition: No
Conversion: No

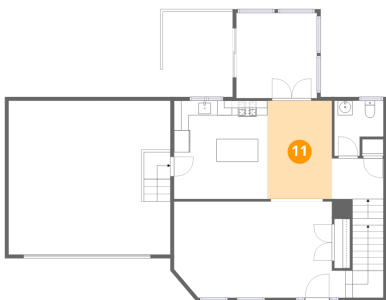
10 Floor 2 - Hall



Dimensions: 7'0" x 5'6"
Area: 78 sq. ft
Counted as living area: Yes

Heated: Yes
Finished: Yes
Enclosed: Yes
Contiguous: Yes
Permitted: Yes
Wet space: No
Addition: No
Conversion: No

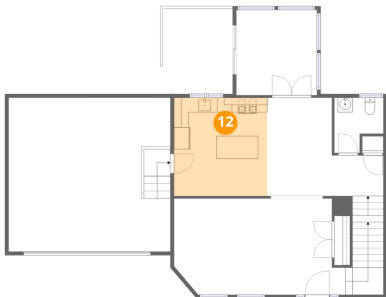
11 Floor 2 - Dining Area



Dimensions: 8'9" x 13'4"
Area: 117 sq. ft
Counted as living area: Yes

Heated: Yes
Finished: Yes
Enclosed: Yes
Contiguous: Yes
Permitted: Yes
Wet space: No
Addition: No
Conversion: No

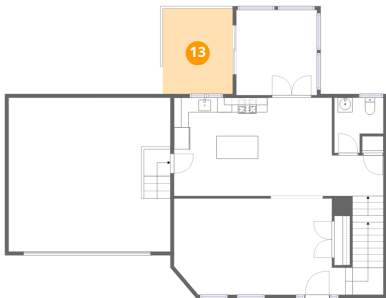
12 Floor 2 - Kitchen



Dimensions: 12'8" x 13'4"
Area: 169 sq. ft
Counted as living area: Yes

Heated: Yes
Finished: Yes
Enclosed: Yes
Contiguous: Yes
Permitted: Yes
Wet space: No
Addition: No
Conversion: No

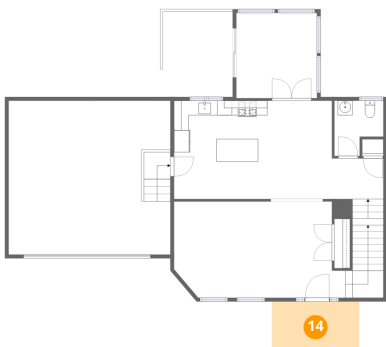
13 Floor 2 - Deck



Dimensions: 9'6" x 11'7"
Area: 110 sq. ft
Counted as living area: No

Heated: No
Finished: No
Enclosed: No
Contiguous: Yes
Permitted: Yes
Wet space: No
Addition: No
Conversion: No

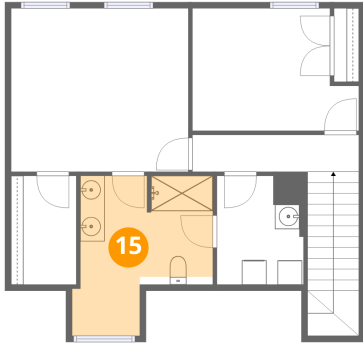
14 Floor 2 - Porch



Dimensions: 11'10" x 6'5"
Area: 77 sq. ft
Counted as living area: No

Heated: No
Finished: No
Enclosed: No
Contiguous: Yes
Permitted: Yes
Wet space: No
Addition: No
Conversion: No

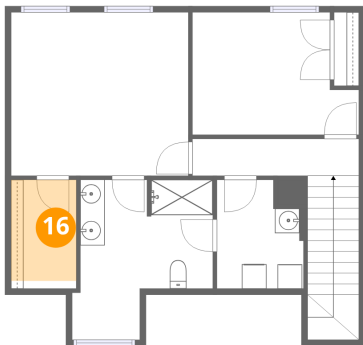
15 Floor 3 - Bath



Dimensions: 10'10" x 13'1"
Area: 114 sq. ft
Counted as living area: Yes

Heated: Yes
Finished: Yes
Enclosed: Yes
Contiguous: Yes
Permitted: Yes
Wet space: Yes
Addition: No
Conversion: No

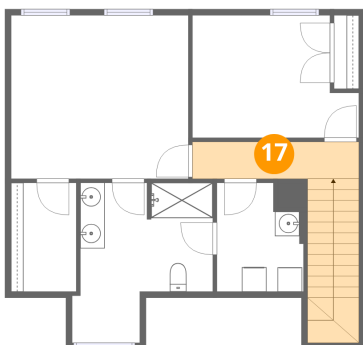
16 Floor 3 - W.I.C.



Dimensions: 5'4" x 8'11"
Area: 44 sq. ft
Counted as living area: Yes

Heated: Yes
Finished: Yes
Enclosed: Yes
Contiguous: Yes
Permitted: Yes
Wet space: No
Addition: No
Conversion: No

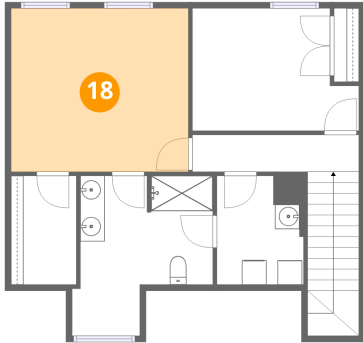
17 Floor 3 - Hall



Dimensions: 13'7" x 3'0"
Area: 97 sq. ft
Counted as living area: Yes

Heated: Yes
Finished: Yes
Enclosed: Yes
Contiguous: Yes
Permitted: Yes
Wet space: No
Addition: No
Conversion: No

18 Floor 3 - Primary Bedroom



Dimensions: 14'6" x 13'4"
Area: 193 sq. ft
Counted as living area: Yes

Heated: Yes
Finished: Yes
Enclosed: Yes
Contiguous: Yes
Permitted: Yes
Wet space: No
Addition: No
Conversion: No

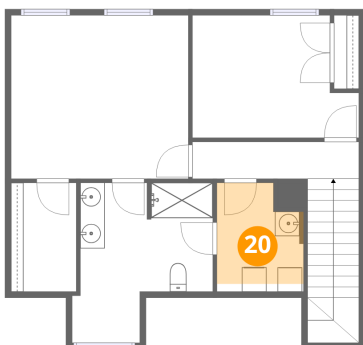
19 Floor 3 - Bedroom



Dimensions: 13'7" x 10'0"
Area: 121 sq. ft
Counted as living area: Yes

Heated: Yes
Finished: Yes
Enclosed: Yes
Contiguous: Yes
Permitted: Yes
Wet space: No
Addition: No
Conversion: No

20 Floor 3 - Laundry



Dimensions: 7'1" x 8'11"
Area: 53 sq. ft
Counted as living area: Yes

Heated: Yes
Finished: Yes
Enclosed: Yes
Contiguous: Yes
Permitted: Yes
Wet space: No
Addition: No
Conversion: No