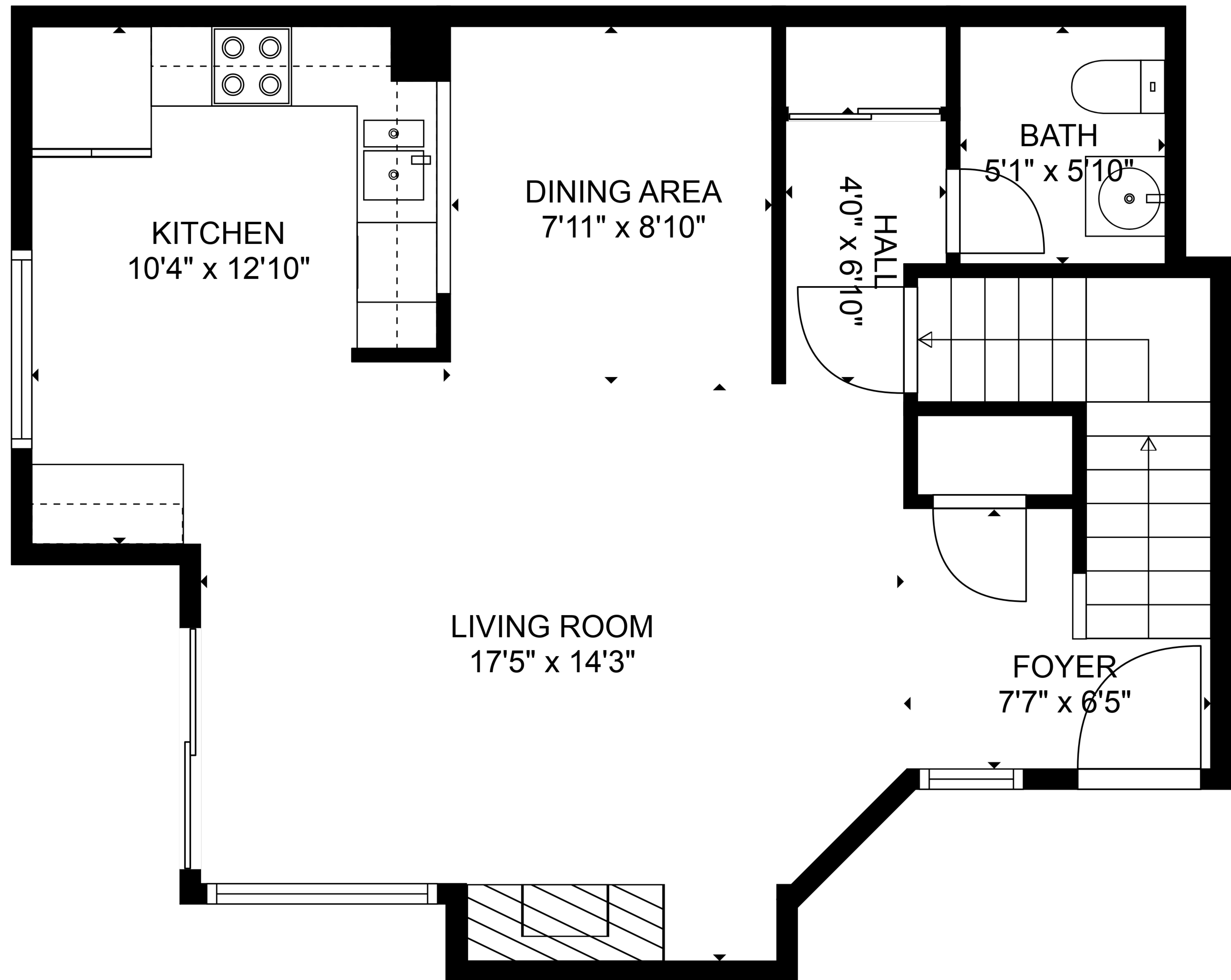


BASEMENT  
29'1" x 21'2"

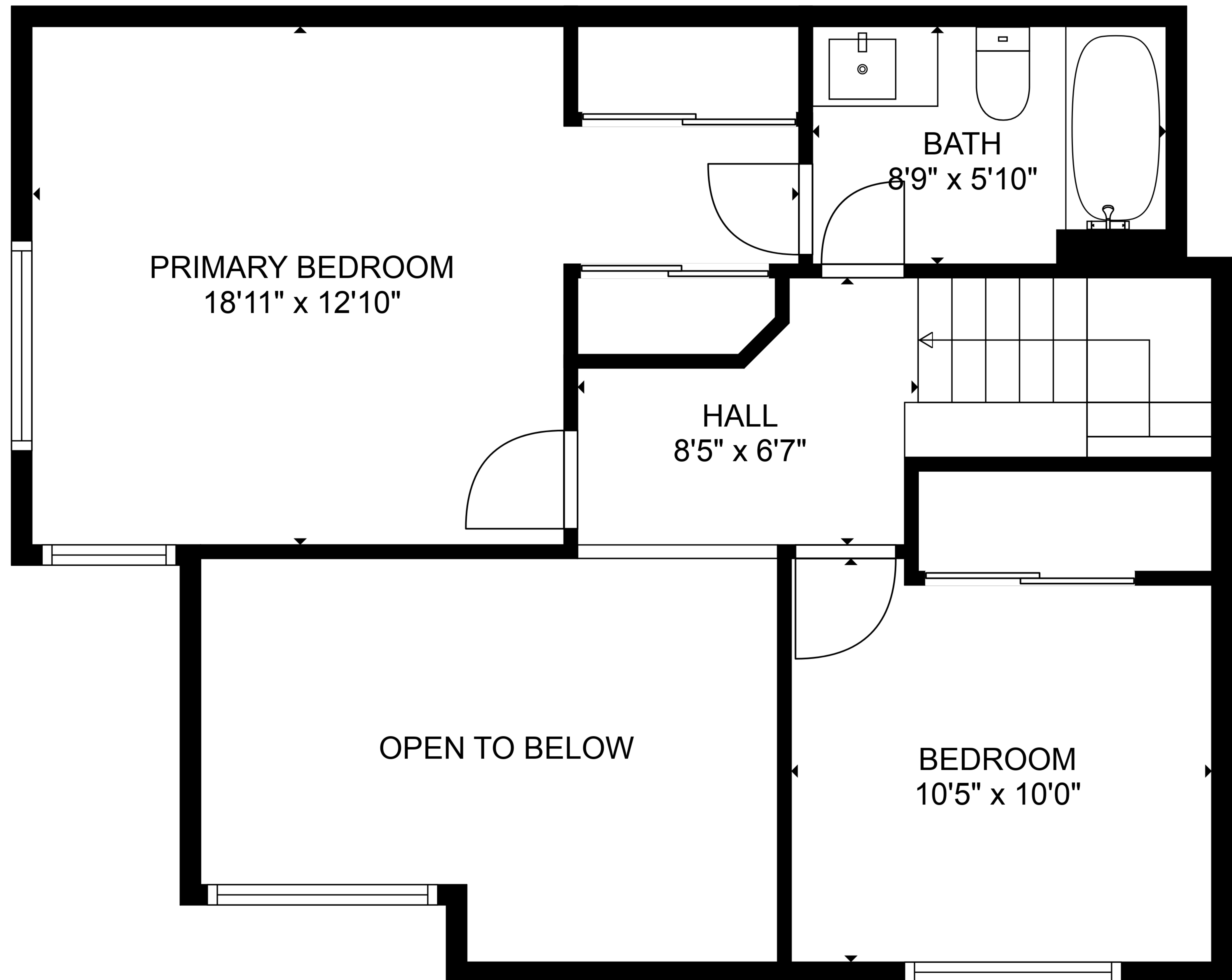
**TOTAL: 1047 sq. ft**  
BELOW GROUND: 0 sq. ft, FLOOR 2: 565 sq. ft, FLOOR 3: 482 sq. ft  
EXCLUDED AREAS: BASEMENT: 557 sq. ft, OPEN TO BELOW: 129 sq. ft  
WALLS: 134 sq. ft

SIZES AND DIMENSIONS ARE APPROXIMATE, ACTUAL MAY VARY.



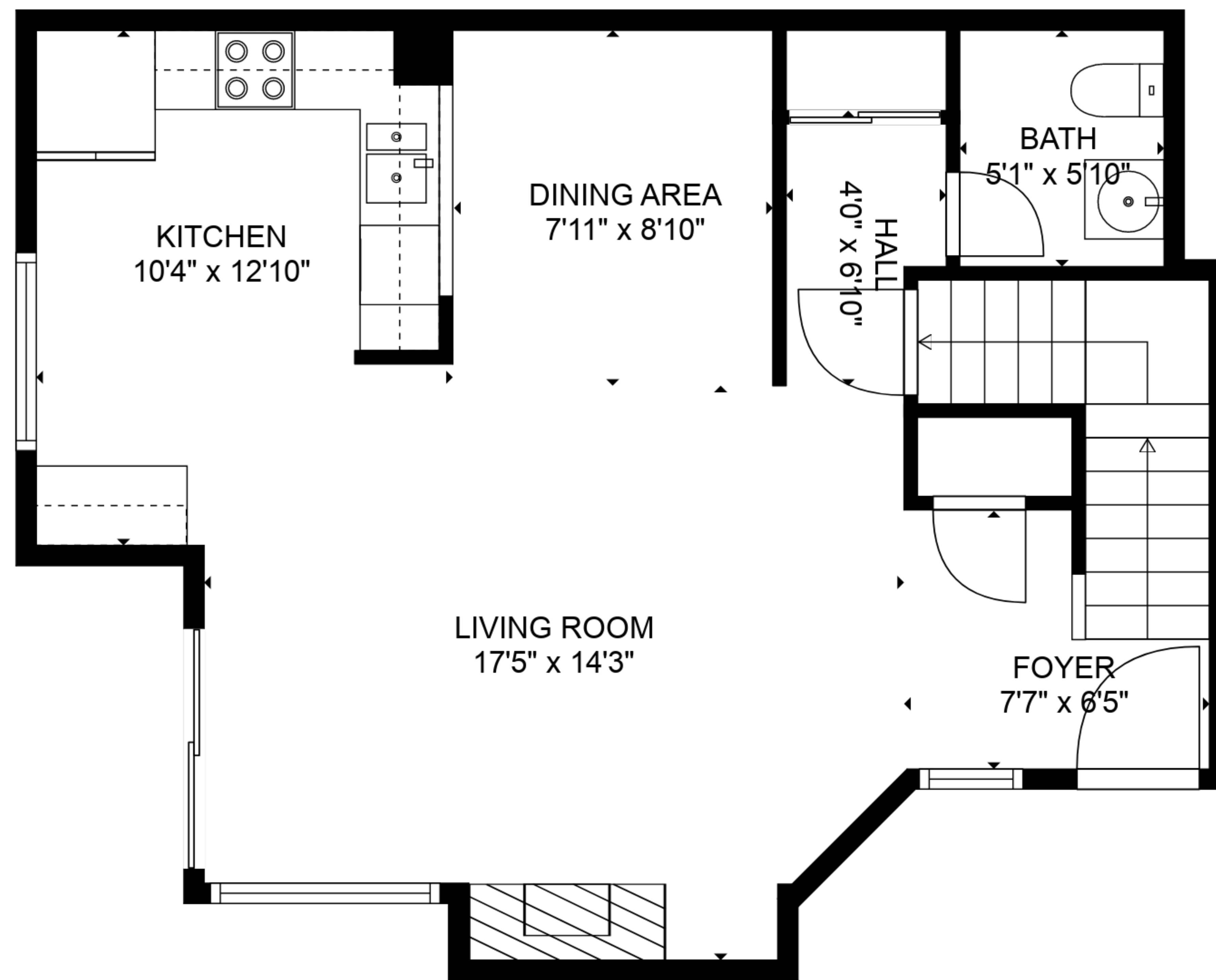
**TOTAL: 1047 sq. ft**  
BELOW GROUND: 0 sq. ft, FLOOR 2: 565 sq. ft, FLOOR 3: 482 sq. ft  
EXCLUDED AREAS: BASEMENT: 557 sq. ft, OPEN TO BELOW: 129 sq. ft  
WALLS: 134 sq. ft

SIZES AND DIMENSIONS ARE APPROXIMATE, ACTUAL MAY VARY.

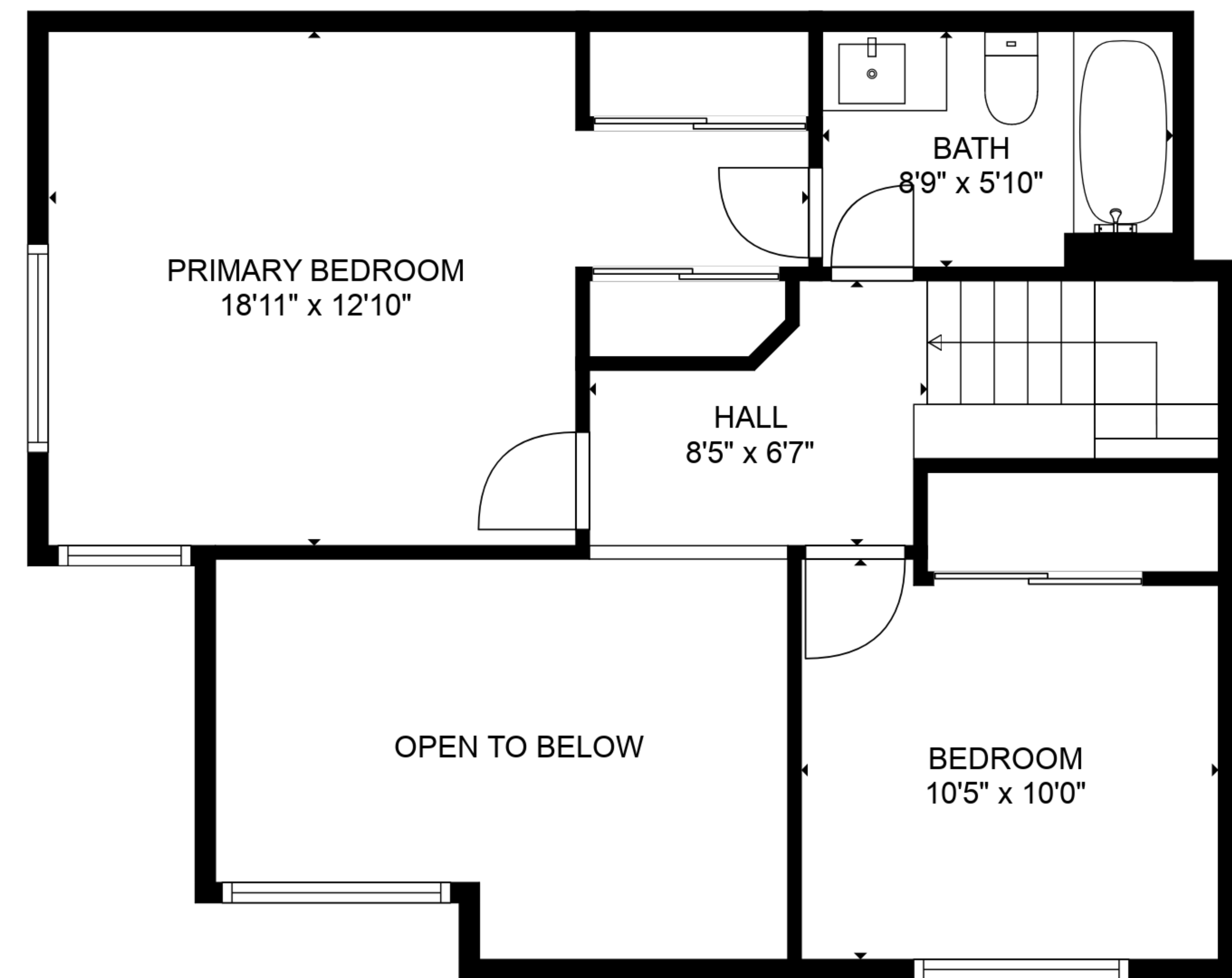


**TOTAL: 1047 sq. ft**  
BELOW GROUND: 0 sq. ft, FLOOR 2: 565 sq. ft, FLOOR 3: 482 sq. ft  
EXCLUDED AREAS: BASEMENT: 557 sq. ft, OPEN TO BELOW: 129 sq. ft  
WALLS: 134 sq. ft

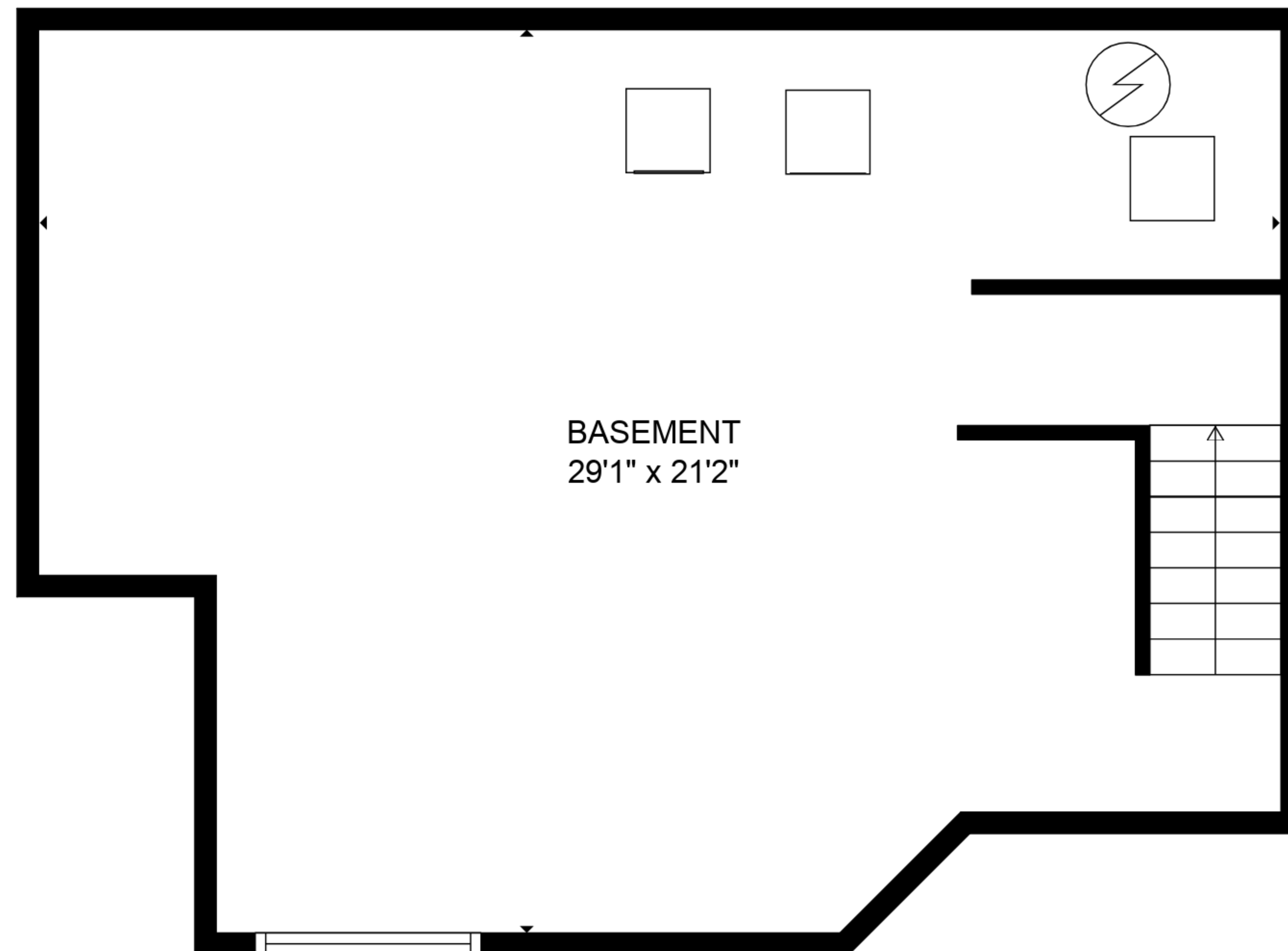
SIZES AND DIMENSIONS ARE APPROXIMATE, ACTUAL MAY VARY.



FLOOR 2



FLOOR 3



FLOOR 1

**TOTAL: 1047 sq. ft**  
BELOW GROUND: 0 sq. ft, FLOOR 2: 565 sq. ft, FLOOR 3: 482 sq. ft  
EXCLUDED AREAS: BASEMENT: 557 sq. ft, OPEN TO BELOW: 129 sq. ft  
WALLS: 134 sq. ft

SIZES AND DIMENSIONS ARE APPROXIMATE, ACTUAL MAY VARY.