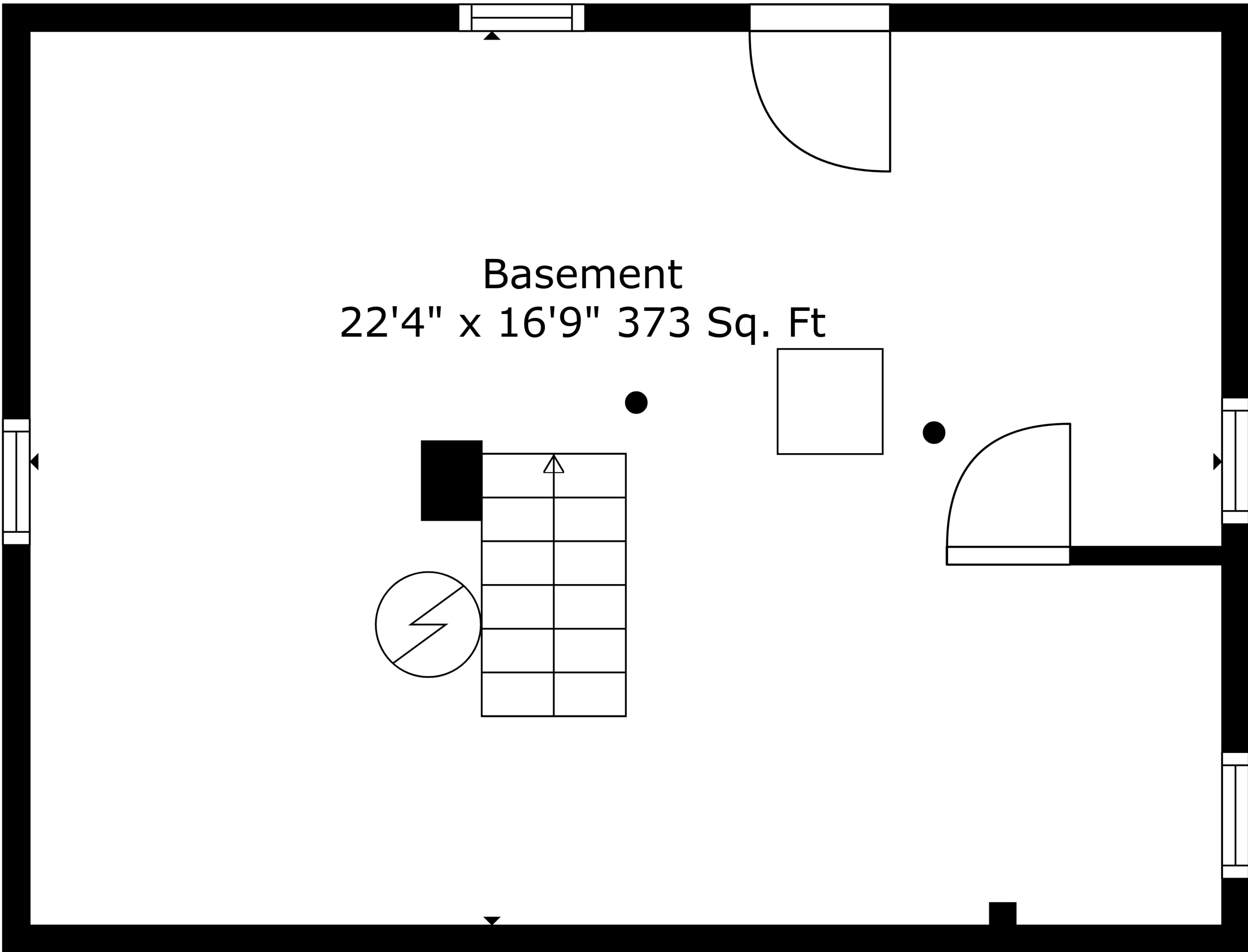
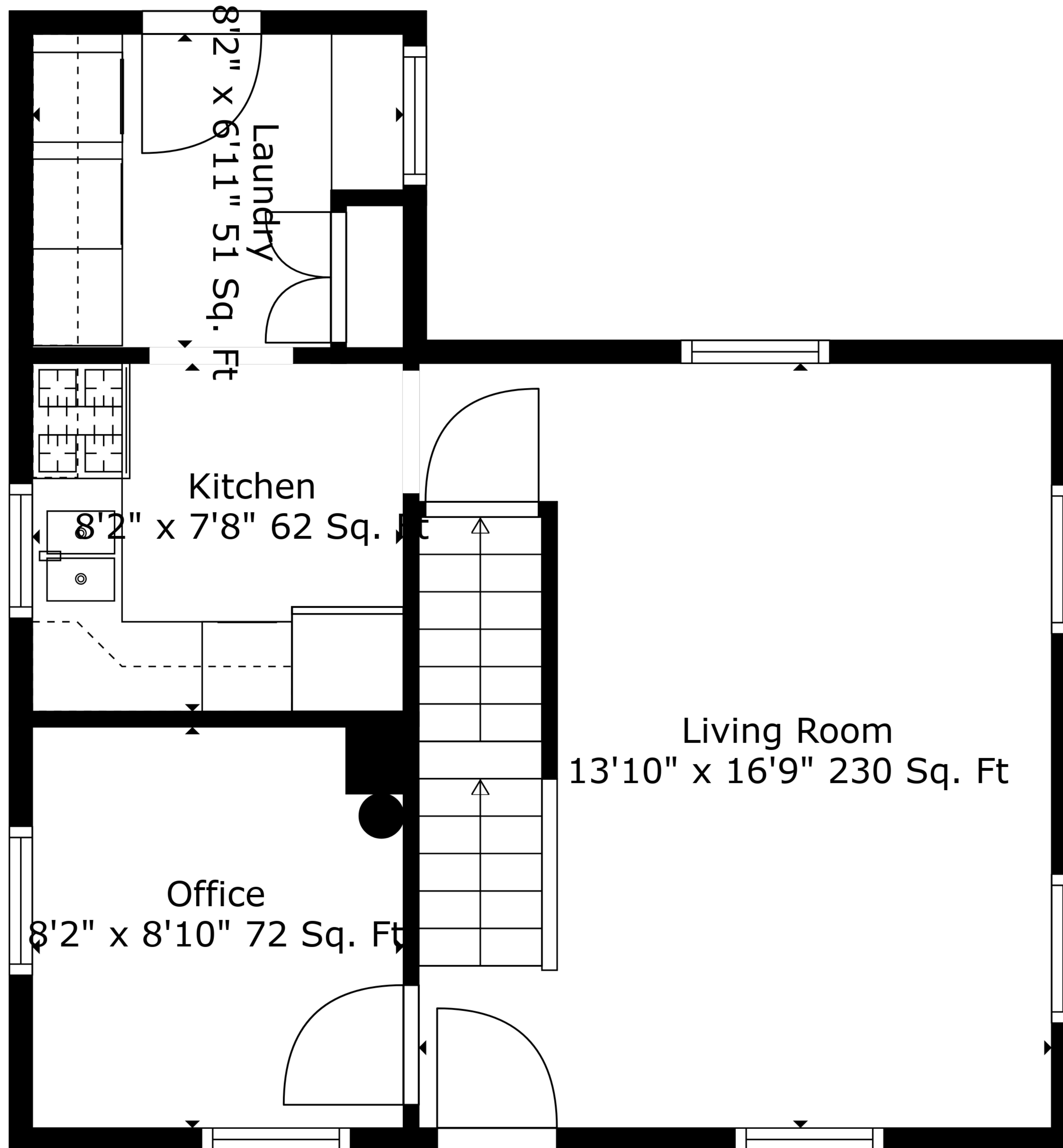


Basement
22'4" x 16'9" 373 Sq. Ft



TOTAL: 788 sq. ft
BELOW GROUND: 0 sq. ft, FLOOR 2: 434 sq. ft, FLOOR 3: 354 sq. ft
EXCLUDED AREAS: BASEMENT: 375 sq. ft, LOW CEILING: 21 sq. ft

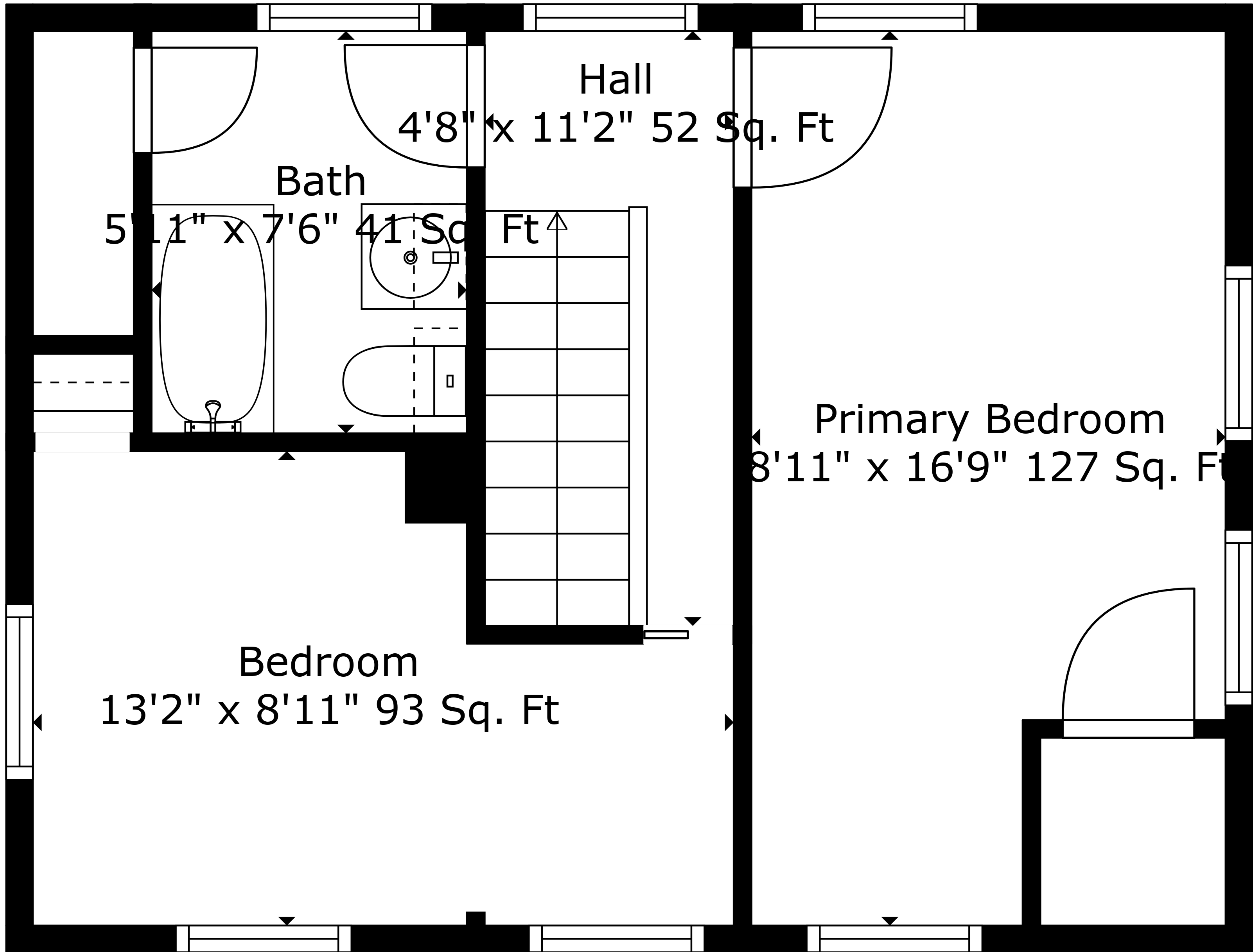
Measurements Are Deemed Highly Reliable But Not Guaranteed.



TOTAL: 788 sq. ft

BELOW GROUND: 0 sq. ft, FLOOR 2: 434 sq. ft, FLOOR 3: 354 sq. ft
EXCLUDED AREAS: BASEMENT: 375 sq. ft, LOW CEILING: 21 sq. ft

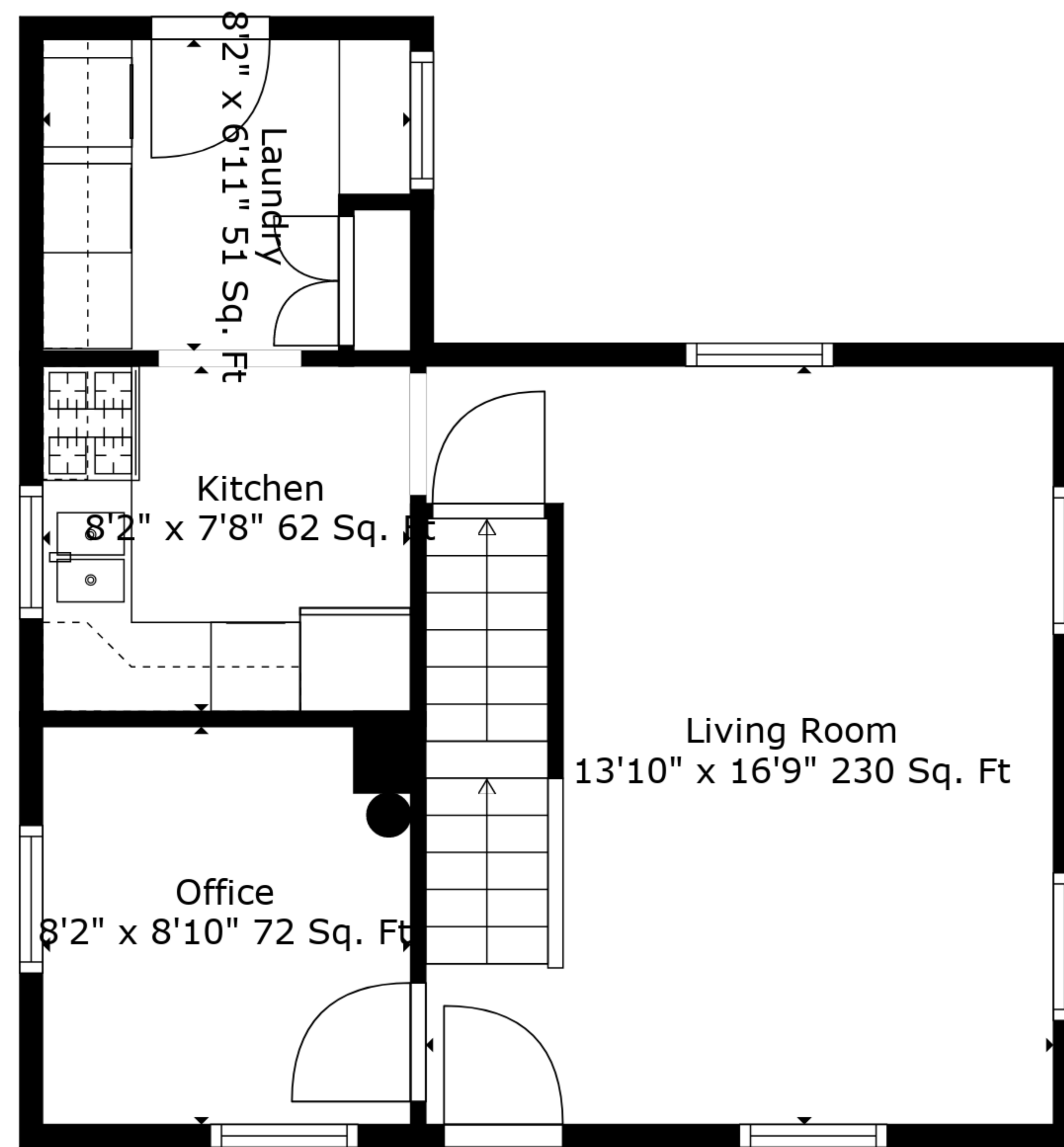
Measurements Are Deemed Highly Reliable But Not Guaranteed.



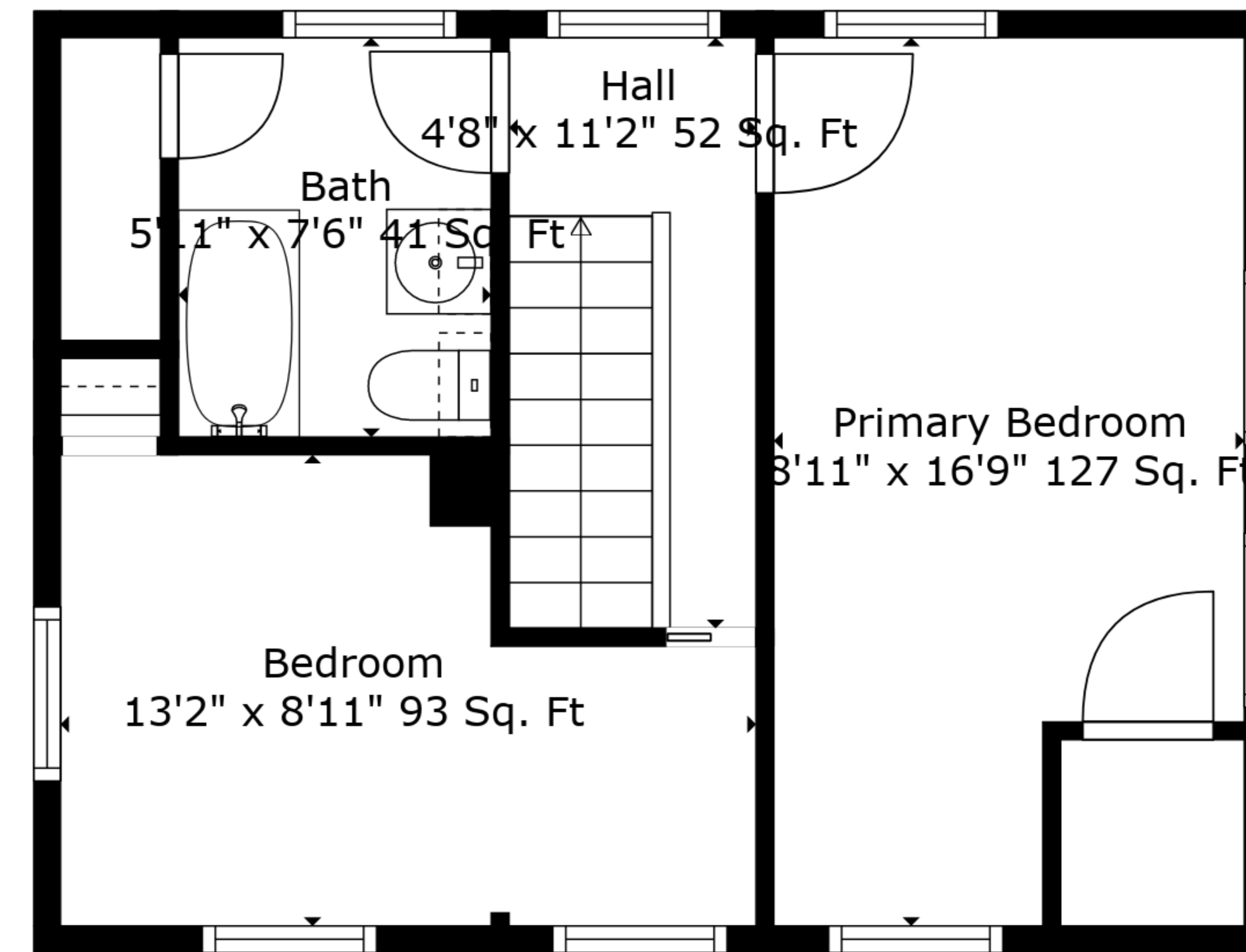
TOTAL: 788 sq. ft

BELOW GROUND: 0 sq. ft, FLOOR 2: 434 sq. ft, FLOOR 3: 354 sq. ft
EXCLUDED AREAS: BASEMENT: 375 sq. ft, LOW CEILING: 21 sq. ft

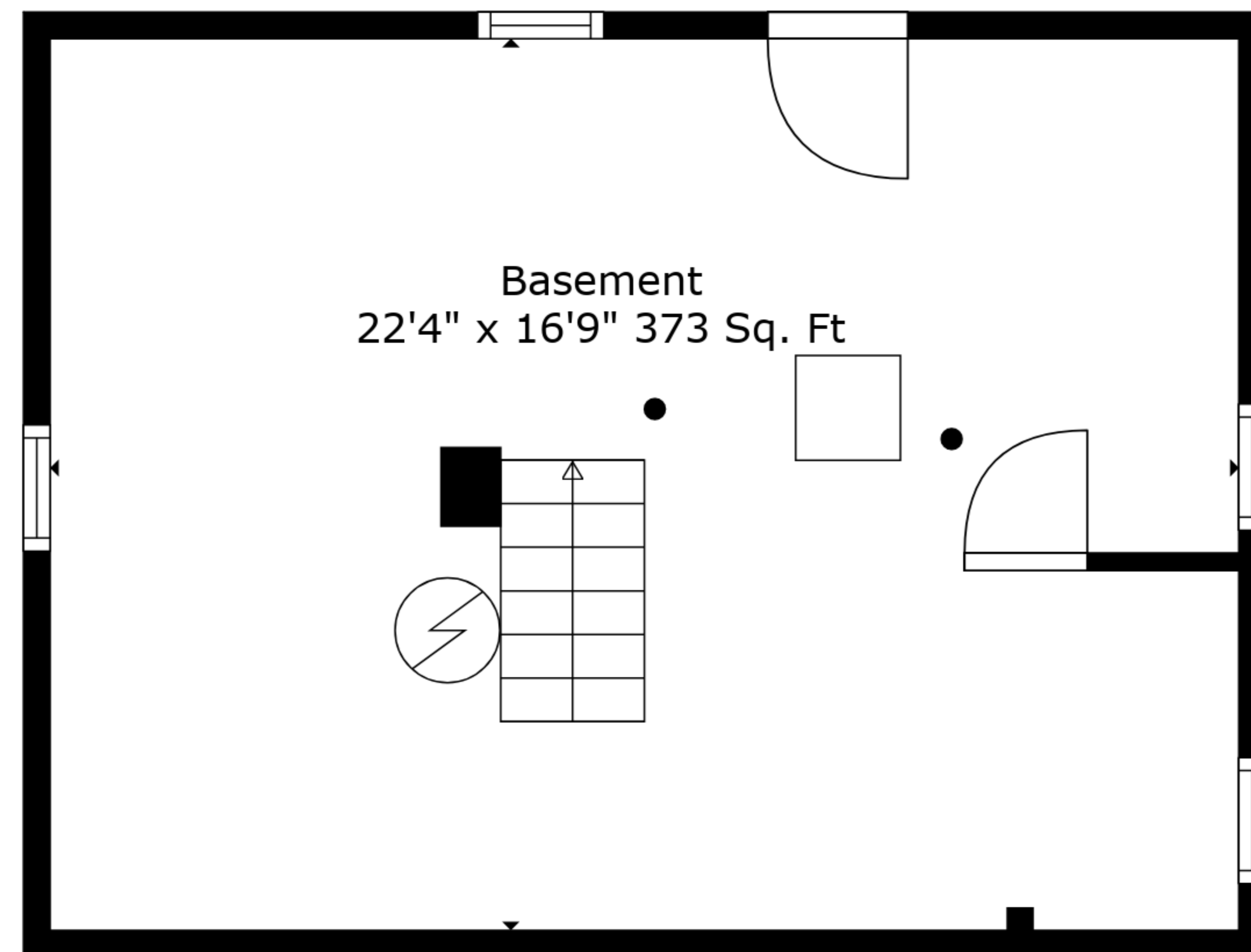
Measurements Are Deemed Highly Reliable But Not Guaranteed.



Floor 2



Floor 3



Floor 1

TOTAL: 788 sq. ft
 BELOW GROUND: 0 sq. ft, FLOOR 2: 434 sq. ft, FLOOR 3: 354 sq. ft
 EXCLUDED AREAS: BASEMENT: 375 sq. ft, LOW CEILING: 21 sq. ft

Measurements Are Deemed Highly Reliable But Not Guaranteed.