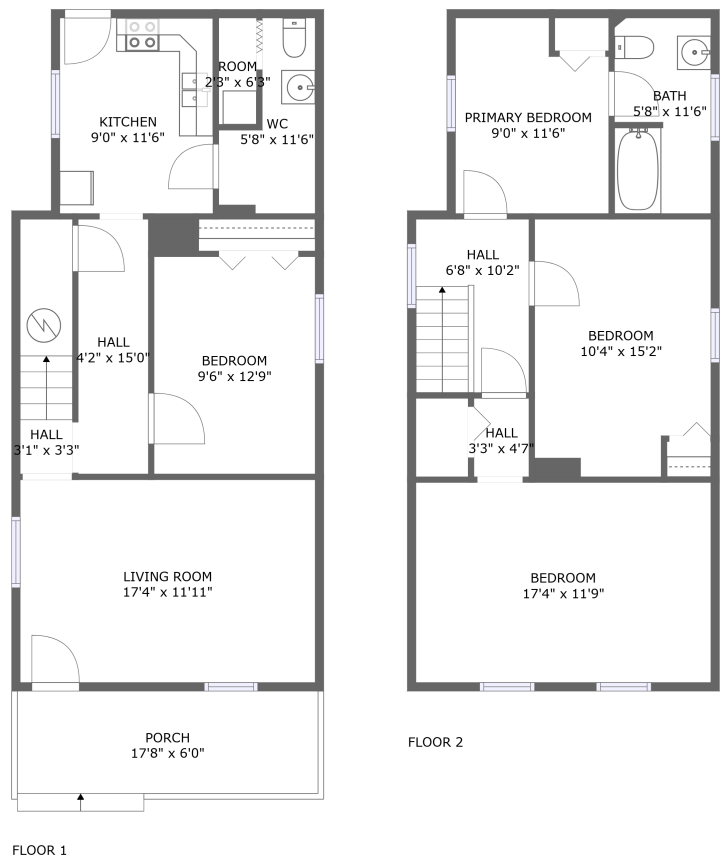


Home report

1002 Stewart Avenue Southeast, Roanoke, Virginia 24013,  
United States



**Total Area: 1418 sq. ft**  
Floor 1: 709 sq. ft, Floor 2: 709 sq. ft  
Excluded: Outdoor Porch 107 sq. ft

Property summary

 **2** Floors

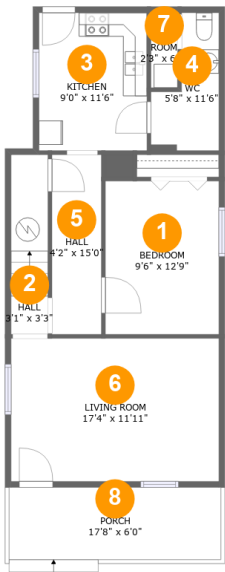
 **4** Bedrooms

 **1** Bathrooms

 **1** Half baths

Home report

1002 Stewart Avenue Southeast, Roanoke, Virginia 24013,  
United States



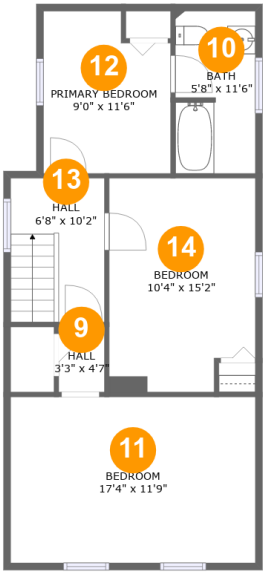
Room dimensions

Floor 1 Total:709sqft Excluded: 107sqft

| # |             | Max Dimensions | sqft       | Included |
|---|-------------|----------------|------------|----------|
| 1 | Bedroom     | 9'6" x 12'9"   | 121 sq. ft | Yes      |
| 2 | Hall        | 3'1" x 3'3"    | 46 sq. ft  | Yes      |
| 3 | Kitchen     | 9'0" x 11'6"   | 104 sq. ft | Yes      |
| 4 | WC          | 5'8" x 11'6"   | 48 sq. ft  | Yes      |
| 5 | Hall        | 4'2" x 15'0"   | 62 sq. ft  | Yes      |
| 6 | Living Room | 17'4" x 11'11" | 207 sq. ft | Yes      |
| 7 | Room        | 2'3" x 6'3"    | 14 sq. ft  | Yes      |
| 8 | Porch       | 17'8" x 6'0"   | 107 sq. ft | No       |

Home report

1002 Stewart Avenue Southeast, Roanoke, Virginia 24013,  
United States



Room dimensions

Floor 2 Total:709sqft Excluded: 0sqft

| #  |                 | Max Dimensions | sqft       | Included |
|----|-----------------|----------------|------------|----------|
| 9  | Hall            | 3'3" x 4'7"    | 15 sq. ft  | Yes      |
| 10 | Bath            | 5'8" x 11'6"   | 64 sq. ft  | Yes      |
| 11 | Bedroom         | 17'4" x 11'9"  | 204 sq. ft | Yes      |
| 12 | Primary Bedroom | 9'0" x 11'6"   | 96 sq. ft  | Yes      |
| 13 | Hall            | 6'8" x 10'2"   | 68 sq. ft  | Yes      |
| 14 | Bedroom         | 10'4" x 15'2"  | 150 sq. ft | Yes      |

1 Floor 1 - Bedroom



Max Dimensions: 9'6" x 12'9"  
Calculated Area: 121 sq. ft  
Included: Yes

Heated: Yes  
Finished: Yes  
Enclosed: Yes  
Contiguous: Yes  
Permitted: Yes  
Wet space: No  
Addition: No  
Conversion: No

2 Floor 1 - Hall

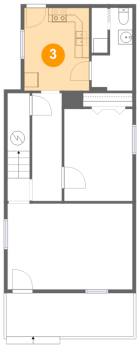


Max Dimensions: 3'1" x 3'3"  
Calculated Area: 46 sq. ft  
Included: Yes

Heated: Yes  
Finished: Yes  
Enclosed: Yes  
Contiguous: Yes  
Permitted: Yes  
Wet space: No  
Addition: No  
Conversion: No

1002 Stewart Avenue Southeast, Roanoke, Virginia 24013,  
United States

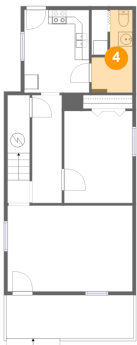
3 Floor 1 - Kitchen



Max Dimensions: 9'0" x 11'6"  
Calculated Area: 104 sq. ft  
Included: Yes

Heated: Yes  
Finished: Yes  
Enclosed: Yes  
Contiguous: Yes  
Permitted: Yes  
Wet space: No  
Addition: No  
Conversion: No

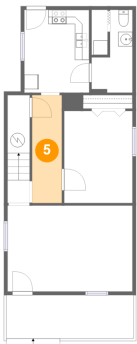
4 Floor 1 - WC



Max Dimensions: 5'8" x 11'6"  
Calculated Area: 48 sq. ft  
Included: Yes

Heated: Yes  
Finished: Yes  
Enclosed: Yes  
Contiguous: Yes  
Permitted: Yes  
Wet space: Yes  
Addition: No  
Conversion: No

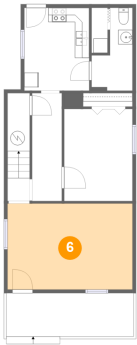
5 Floor 1 - Hall



Max Dimensions: 4'2" x 15'0"  
Calculated Area: 62 sq. ft  
Included: Yes

Heated: Yes  
Finished: Yes  
Enclosed: Yes  
Contiguous: Yes  
Permitted: Yes  
Wet space: No  
Addition: No  
Conversion: No

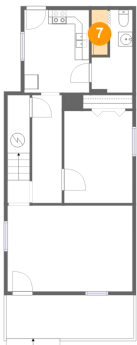
6 Floor 1 - Living Room



Max Dimensions: 17'4" x 11'11"  
Calculated Area: 207 sq. ft  
Included: Yes

Heated: Yes  
Finished: Yes  
Enclosed: Yes  
Contiguous: Yes  
Permitted: Yes  
Wet space: No  
Addition: No  
Conversion: No

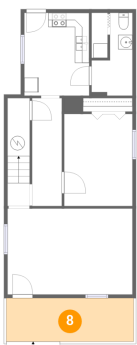
7 Floor 1 - Room



Max Dimensions: 2'3" x 6'3"  
Calculated Area: 14 sq. ft  
Included: Yes

Heated: Yes  
Finished: Yes  
Enclosed: Yes  
Contiguous: Yes  
Permitted: Yes  
Wet space: No  
Addition: No  
Conversion: No

8 Floor 1 - Porch



Max Dimensions: 17'8" x 6'0"  
Calculated Area: 107 sq. ft  
Included: No

Heated: No  
Finished: Yes  
Enclosed: No  
Contiguous: Yes  
Permitted: Yes  
Wet space: No  
Addition: No  
Conversion: No

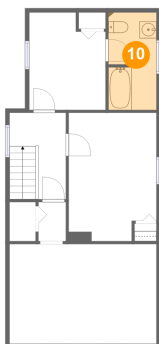
9 Floor 2 - Hall



Max Dimensions: 3'3" x 4'7"  
Calculated Area: 15 sq. ft  
Included: Yes

Heated: Yes  
Finished: Yes  
Enclosed: Yes  
Contiguous: Yes  
Permitted: Yes  
Wet space: No  
Addition: No  
Conversion: No

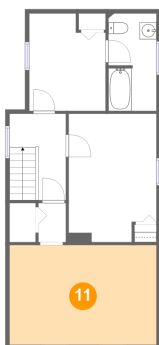
10 Floor 2 - Bath



Max Dimensions: 5'8" x 11'6"  
Calculated Area: 64 sq. ft  
Included: Yes

Heated: Yes  
Finished: Yes  
Enclosed: Yes  
Contiguous: Yes  
Permitted: Yes  
Wet space: Yes  
Addition: No  
Conversion: No

11 Floor 2 - Bedroom

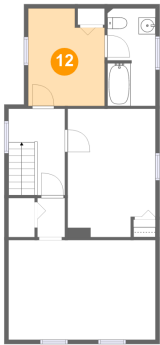


Max Dimensions: 17'4" x 11'9"  
Calculated Area: 204 sq. ft  
Included: Yes

Heated: Yes  
Finished: Yes  
Enclosed: Yes  
Contiguous: Yes  
Permitted: Yes  
Wet space: No  
Addition: No  
Conversion: No

1002 Stewart Avenue Southeast, Roanoke, Virginia 24013,  
United States

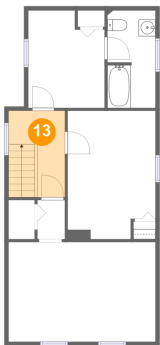
12 Floor 2 - Primary Bedroom



Max Dimensions: 9'0" x 11'6"  
Calculated Area: 96 sq. ft  
Included: Yes

Heated: Yes  
Finished: Yes  
Enclosed: Yes  
Contiguous: Yes  
Permitted: Yes  
Wet space: No  
Addition: No  
Conversion: No

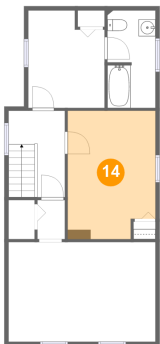
13 Floor 2 - Hall



Max Dimensions: 6'8" x 10'2"  
Calculated Area: 68 sq. ft  
Included: Yes

Heated: Yes  
Finished: Yes  
Enclosed: Yes  
Contiguous: Yes  
Permitted: Yes  
Wet space: No  
Addition: No  
Conversion: No

14 Floor 2 - Bedroom



Max Dimensions: 10'4" x 15'2"  
Calculated Area: 150 sq. ft  
Included: Yes

Heated: Yes  
Finished: Yes  
Enclosed: Yes  
Contiguous: Yes  
Permitted: Yes  
Wet space: No  
Addition: No  
Conversion: No