

Home report

5224 Setter Road Northeast, Huntridge, Roanoke, Roanoke County, Virginia, United States, 24012



Total Area: 2837 sq. ft

Floor 1: 405 sq. ft, Floor 2: 1390 sq. ft, Floor 3: 1042 sq. ft

Excluded: Garage 572 sq. ft, Utility 51 sq. ft, Fireplace 22 sq. ft, Deck 270 sq. ft, Walls: 232 sq. ft

Property summary

 **3** Floors

 **5** Bedrooms

 **2** Bathrooms

Home report

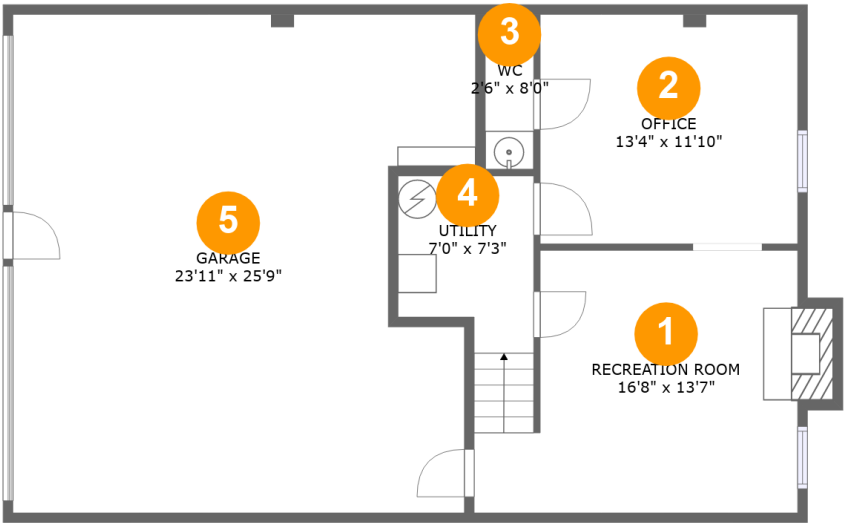
5224 Setter Road Northeast, Huntridge, Roanoke, Roanoke
County, Virginia, United States, 24012

 **2**
Half baths

 **1**
Garages

Home report

5224 Setter Road Northeast, Huntridge, Roanoke, Roanoke County, Virginia, United States, 24012



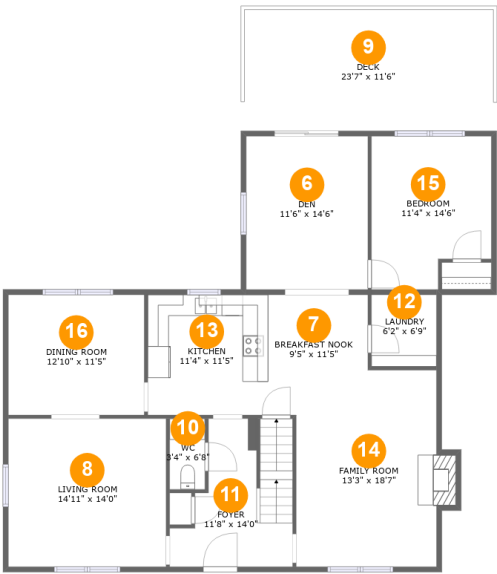
Room dimensions

Floor 1 Total:405sqft Excluded: 634sqft

#		Max Dimensions	sqft	Included
1	Recreation Room	16'8" x 13'7"	221 sq. ft	Yes
2	Office	13'4" x 11'10"	157 sq. ft	Yes
3	WC	2'6" x 8'0"	20 sq. ft	Yes
4	Utility	7'0" x 7'3"	51 sq. ft	No
5	Garage	23'11" x 25'9"	572 sq. ft	No

Home report

5224 Setter Road Northeast, Huntridge, Roanoke, Roanoke County, Virginia, United States, 24012



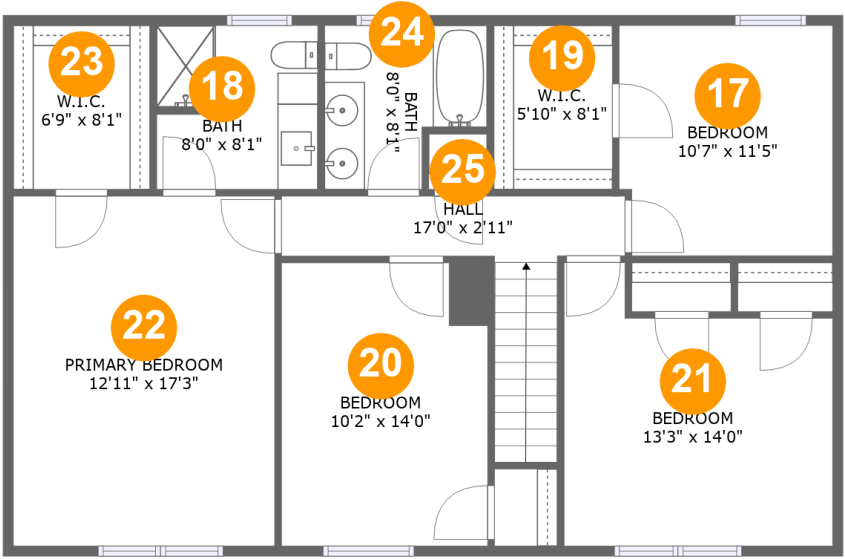
Room dimensions

Floor 2 Total:1390sqft Excluded: 281sqft

#		Max Dimensions	sqft	Included
6	Den	11'6" x 14'6"	167 sq. ft	Yes
7	Breakfast Nook	9'5" x 11'5"	93 sq. ft	Yes
8	Living Room	14'11" x 14'0"	209 sq. ft	Yes
9	Deck	23'7" x 11'6"	270 sq. ft	No
10	WC	3'4" x 6'8"	22 sq. ft	Yes
11	Foyer	11'8" x 14'0"	127 sq. ft	Yes
12	Laundry	6'2" x 6'9"	42 sq. ft	Yes
13	Kitchen	11'4" x 11'5"	129 sq. ft	Yes
14	Family Room	13'3" x 18'7"	241 sq. ft	Yes
15	Bedroom	11'4" x 14'6"	150 sq. ft	Yes
16	Dining Room	12'10" x 11'5"	146 sq. ft	Yes

Home report

5224 Setter Road Northeast, Huntridge, Roanoke, Roanoke County, Virginia, United States, 24012



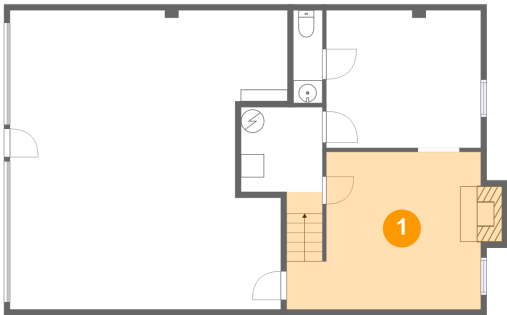
Room dimensions

Floor 3 Total:1042sqft Excluded: 0sqft

#		Max Dimensions	sqft	Included
17	Bedroom	10'7" x 11'5"	118 sq. ft	Yes
18	Bath	8'0" x 8'1"	63 sq. ft	Yes
19	W.I.C.	5'10" x 8'1"	48 sq. ft	Yes
20	Bedroom	10'2" x 14'0"	137 sq. ft	Yes
21	Bedroom	13'3" x 14'0"	158 sq. ft	Yes
22	Primary Bedroom	12'11" x 17'3"	223 sq. ft	Yes
23	W.I.C.	6'9" x 8'1"	55 sq. ft	Yes
24	Bath	8'0" x 8'1"	55 sq. ft	Yes
25	Hall	17'0" x 2'11"	82 sq. ft	Yes

5224 Setter Road Northeast, Huntridge, Roanoke, Roanoke
County, Virginia, United States, 24012

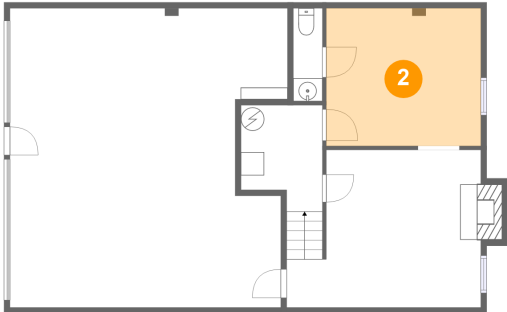
1 Floor 1 - Recreation Room



Max Dimensions: 16'8" x 13'7"
Calculated Area: 221 sq. ft
Included: Yes

Heated: Yes
Finished: Yes
Enclosed: Yes
Contiguous: Yes
Permitted: Yes
Wet space: No
Addition: No
Conversion: No

2 Floor 1 - Office



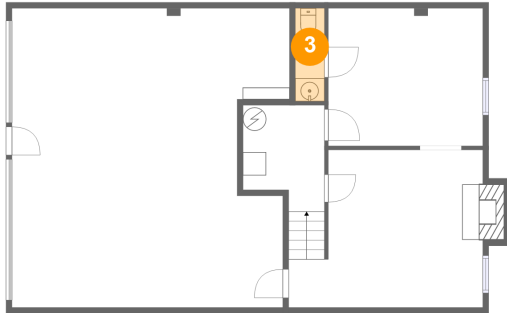
Max Dimensions: 13'4" x 11'10"
Calculated Area: 157 sq. ft
Included: Yes

Heated: Yes
Finished: Yes
Enclosed: Yes
Contiguous: Yes
Permitted: Yes
Wet space: No
Addition: No
Conversion: No

Home report

5224 Setter Road Northeast, Huntridge, Roanoke, Roanoke County, Virginia, United States, 24012

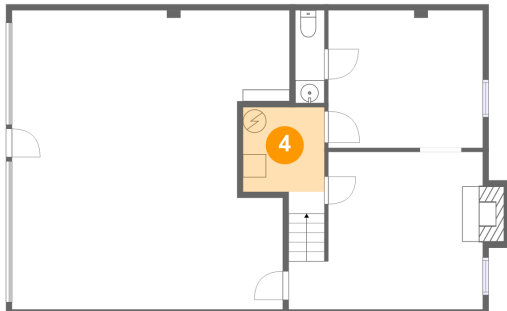
3 Floor 1 - WC



Max Dimensions: 2'6" x 8'0"
Calculated Area: 20 sq. ft
Included: Yes

Heated: Yes
Finished: Yes
Enclosed: Yes
Contiguous: Yes
Permitted: Yes
Wet space: Yes
Addition: No
Conversion: No

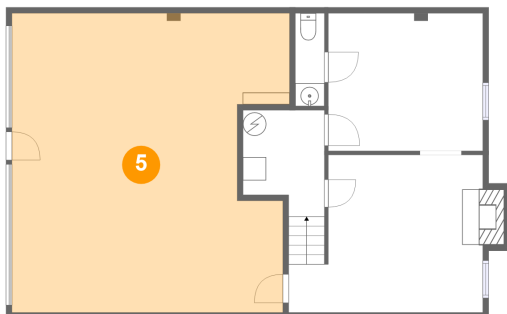
4 Floor 1 - Utility



Max Dimensions: 7'0" x 7'3"
Calculated Area: 51 sq. ft
Included: No

Heated: Yes
Finished: No
Enclosed: Yes
Contiguous: Yes
Permitted: Yes
Wet space: No
Addition: No
Conversion: No

5 Floor 1 - Garage

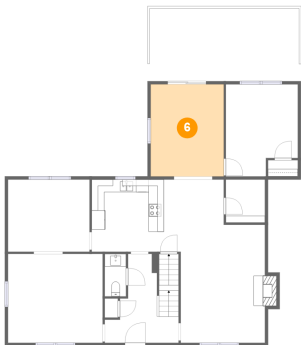


Max Dimensions: 23'11" x 25'9"
Calculated Area: 572 sq. ft
Included: No

Heated: No
Finished: No
Enclosed: Yes
Contiguous: Yes
Permitted: Yes
Wet space: No
Addition: No
Conversion: No

5224 Setter Road Northeast, Huntridge, Roanoke, Roanoke
County, Virginia, United States, 24012

6 Floor 2 - Den



Max Dimensions: 11'6" x 14'6"
Calculated Area: 167 sq. ft
Included: Yes

Heated: Yes
Finished: Yes
Enclosed: Yes
Contiguous: Yes
Permitted: Yes
Wet space: No
Addition: No
Conversion: No

7 Floor 2 - Breakfast Nook



Max Dimensions: 9'5" x 11'5"
Calculated Area: 93 sq. ft
Included: Yes

Heated: Yes
Finished: Yes
Enclosed: Yes
Contiguous: Yes
Permitted: Yes
Wet space: No
Addition: No
Conversion: No

8 Floor 2 - Living Room



Max Dimensions: 14'11" x 14'0"
Calculated Area: 209 sq. ft
Included: Yes

Heated: Yes
Finished: Yes
Enclosed: Yes
Contiguous: Yes
Permitted: Yes
Wet space: No
Addition: No
Conversion: No

5224 Setter Road Northeast, Huntridge, Roanoke, Roanoke
County, Virginia, United States, 24012

9 Floor 2 - Deck



Max Dimensions: 23'7" x 11'6"
Calculated Area: 270 sq. ft
Included: No

Heated: No
Finished: No
Enclosed: No
Contiguous: Yes
Permitted: Yes
Wet space: No
Addition: No
Conversion: No

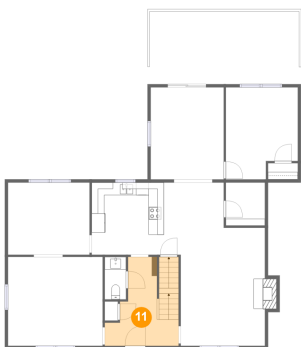
10 Floor 2 - WC



Max Dimensions: 3'4" x 6'8"
Calculated Area: 22 sq. ft
Included: Yes

Heated: Yes
Finished: Yes
Enclosed: Yes
Contiguous: Yes
Permitted: Yes
Wet space: Yes
Addition: No
Conversion: No

11 Floor 2 - Foyer



Max Dimensions: 11'8" x 14'0"
Calculated Area: 127 sq. ft
Included: Yes

Heated: Yes
Finished: Yes
Enclosed: Yes
Contiguous: Yes
Permitted: Yes
Wet space: No
Addition: No
Conversion: No

12 Floor 2 - Laundry



Max Dimensions: 6'2" x 6'9"
Calculated Area: 42 sq. ft
Included: Yes

Heated: Yes
Finished: Yes
Enclosed: Yes
Contiguous: Yes
Permitted: Yes
Wet space: No
Addition: No
Conversion: No

13 Floor 2 - Kitchen



Max Dimensions: 11'4" x 11'5"
Calculated Area: 129 sq. ft
Included: Yes

Heated: Yes
Finished: Yes
Enclosed: Yes
Contiguous: Yes
Permitted: Yes
Wet space: No
Addition: No
Conversion: No

14 Floor 2 - Family Room

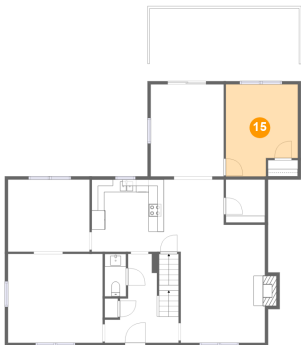


Max Dimensions: 13'3" x 18'7"
Calculated Area: 241 sq. ft
Included: Yes

Heated: Yes
Finished: Yes
Enclosed: Yes
Contiguous: Yes
Permitted: Yes
Wet space: No
Addition: No
Conversion: No

5224 Setter Road Northeast, Huntridge, Roanoke, Roanoke
County, Virginia, United States, 24012

15 Floor 2 - Bedroom



Max Dimensions: 11'4" x 14'6"
Calculated Area: 150 sq. ft
Included: Yes

Heated: Yes
Finished: Yes
Enclosed: Yes
Contiguous: Yes
Permitted: Yes
Wet space: No
Addition: No
Conversion: No

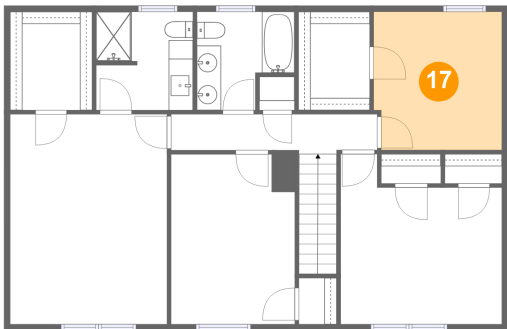
16 Floor 2 - Dining Room



Max Dimensions: 12'10" x 11'5"
Calculated Area: 146 sq. ft
Included: Yes

Heated: Yes
Finished: Yes
Enclosed: Yes
Contiguous: Yes
Permitted: Yes
Wet space: No
Addition: No
Conversion: No

17 Floor 3 - Bedroom

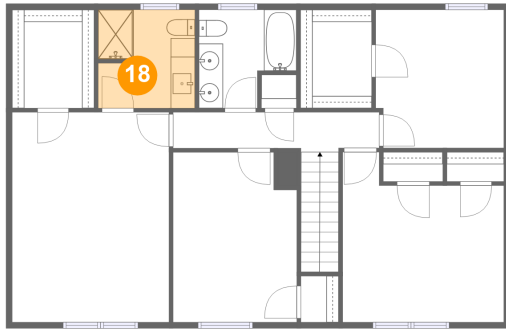


Max Dimensions: 10'7" x 11'5"
Calculated Area: 118 sq. ft
Included: Yes

Heated: Yes
Finished: Yes
Enclosed: Yes
Contiguous: Yes
Permitted: Yes
Wet space: No
Addition: No
Conversion: No

5224 Setter Road Northeast, Huntridge, Roanoke, Roanoke
County, Virginia, United States, 24012

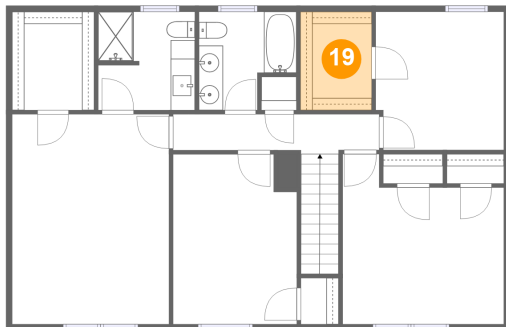
18 Floor 3 - Bath



Max Dimensions: 8'0" x 8'1"
Calculated Area: 63 sq. ft
Included: Yes

Heated: Yes
Finished: Yes
Enclosed: Yes
Contiguous: Yes
Permitted: Yes
Wet space: Yes
Addition: No
Conversion: No

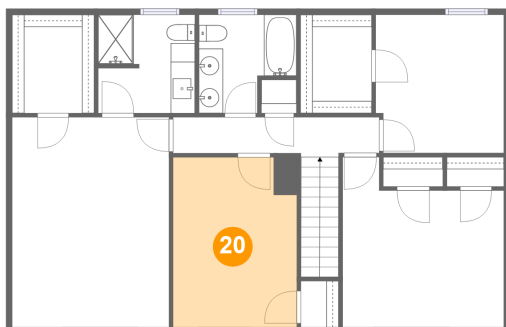
19 Floor 3 - W.I.C.



Max Dimensions: 5'10" x 8'1"
Calculated Area: 48 sq. ft
Included: Yes

Heated: Yes
Finished: Yes
Enclosed: Yes
Contiguous: Yes
Permitted: Yes
Wet space: No
Addition: No
Conversion: No

20 Floor 3 - Bedroom

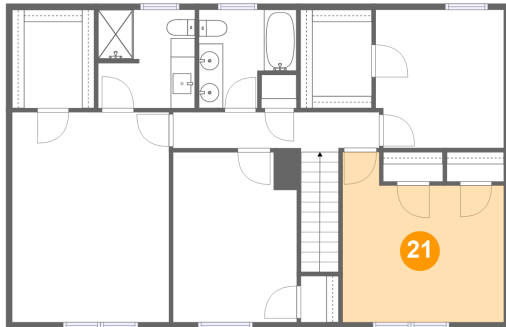


Max Dimensions: 10'2" x 14'0"
Calculated Area: 137 sq. ft
Included: Yes

Heated: Yes
Finished: Yes
Enclosed: Yes
Contiguous: Yes
Permitted: Yes
Wet space: No
Addition: No
Conversion: No

5224 Setter Road Northeast, Huntridge, Roanoke, Roanoke
County, Virginia, United States, 24012

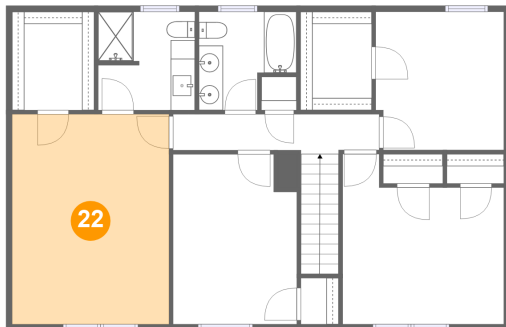
21 Floor 3 - Bedroom



Max Dimensions: 13'3" x 14'0"
Calculated Area: 158 sq. ft
Included: Yes

Heated: Yes
Finished: Yes
Enclosed: Yes
Contiguous: Yes
Permitted: Yes
Wet space: No
Addition: No
Conversion: No

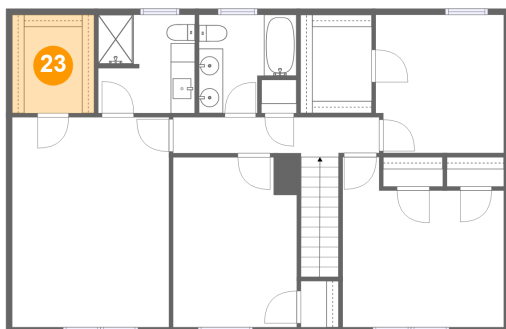
22 Floor 3 - Primary Bedroom



Max Dimensions: 12'11" x 17'3"
Calculated Area: 223 sq. ft
Included: Yes

Heated: Yes
Finished: Yes
Enclosed: Yes
Contiguous: Yes
Permitted: Yes
Wet space: No
Addition: No
Conversion: No

23 Floor 3 - W.I.C.

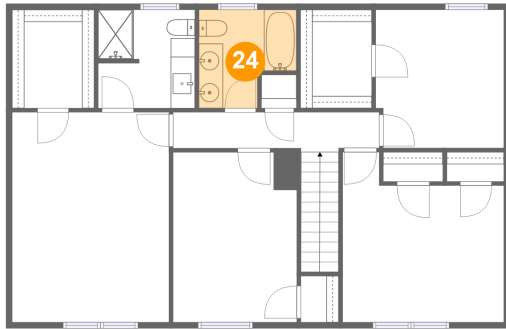


Max Dimensions: 6'9" x 8'1"
Calculated Area: 55 sq. ft
Included: Yes

Heated: Yes
Finished: Yes
Enclosed: Yes
Contiguous: Yes
Permitted: Yes
Wet space: No
Addition: No
Conversion: No

5224 Setter Road Northeast, Huntridge, Roanoke, Roanoke
County, Virginia, United States, 24012

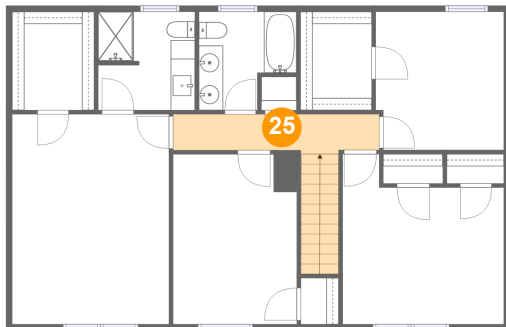
24 Floor 3 - Bath



Max Dimensions: 8'0" x 8'1"
Calculated Area: 55 sq. ft
Included: Yes

Heated: Yes
Finished: Yes
Enclosed: Yes
Contiguous: Yes
Permitted: Yes
Wet space: Yes
Addition: No
Conversion: No

25 Floor 3 - Hall



Max Dimensions: 17'0" x 2'11"
Calculated Area: 82 sq. ft
Included: Yes

Heated: Yes
Finished: Yes
Enclosed: Yes
Contiguous: Yes
Permitted: Yes
Wet space: No
Addition: No
Conversion: No