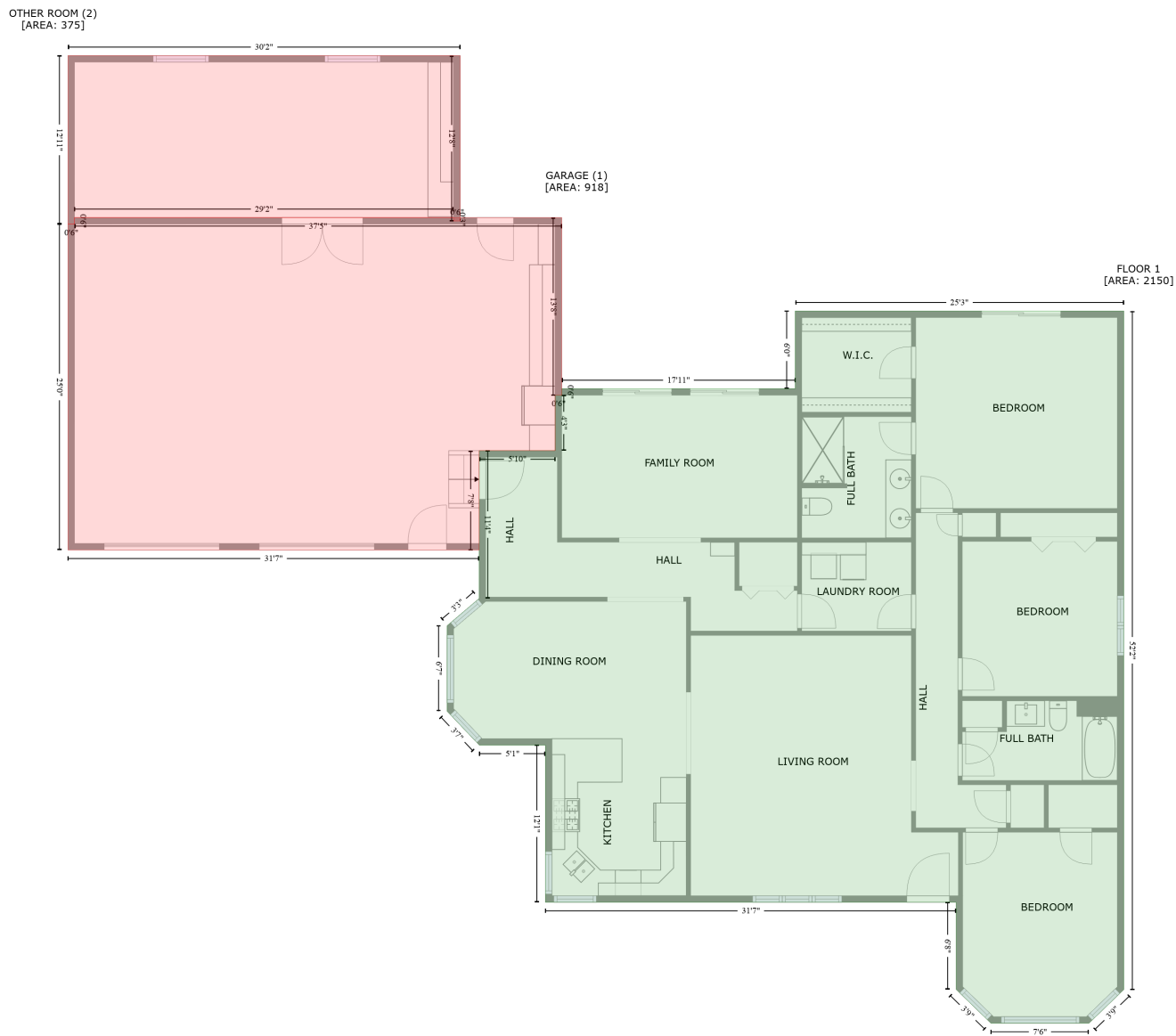


206 W Newton St, Mansfield, Illinois, United States

Gross Living Area: 2150 sq. ft



Space	Area (sq. ft)	Calculation
FLOOR 1 (Living area)	2150	Coordinate Polygon Area Algorithm using inches $-((952.5 + 952.5) * (259 - 884.6) + (952.5 + 920.4) * (884.6 - 915.6) + (920.4 + 830) * (915.6 - 915.6) + (830 + 798) * (915.6 - 884.4) + (798 + 798) * (884.4 - 804.1) + (798 + 419.2) * (804.1 - 804.1) + (419.2 + 419.2) * (804.1 - 659.2) + (419.2 + 358.3) * (659.2 - 659.2) + (358.3 + 328.6) * (659.2 - 627.9) + (328.6 + 328.6) * (627.9 - 549.1) + (328.6 + 358.2) * (549.1 - 524) + (358.2 + 358.2) * (524 - 387.7) + (358.2 + 428.3) * (387.7 - 387.7) + (428.3 + 428.3) * (387.7 - 336.7) + (428.3 + 434.3) * (336.7 - 336.7) + (434.3 + 434.3) * (336.7 - 330.7) + (434.3 + 649.6) * (330.7 - 330.7) + (649.6 + 649.6) * (330.7 - 259) + (649.6 + 952.5) * (259 - 259)) * 0.5 * 0.00694$
GARAGE	918	$-((434.3 + 434.3) * (172.9 - 336.7) + (434.3 + 428.3) * (336.7 - 336.7) + (428.3 + 428.3) * (336.7 -$

206 W Newton St, Mansfield, Illinois, United States

Gross Living Area: 2150 sq. ft

Space	Area (sq. ft)	Calculation <small>Coordinate Polygon Area Algorithm using inches</small>
(Non-living area)		$387.7 + (428.3 + 358.2) * (387.7 - 387.7) + (358.2 + 358.2) * (387.7 - 479.3) + (358.2 + -20.9) * (479.3 - 479.3) + (-20.9 + -20.9) * (479.3 - 178.9) + (-20.9 + -14.9) * (178.9 - 178.9) + (-14.9 + -14.9) * (178.9 - 172.9) + (-14.9 + 434.3) * (172.9 - 172.9)) * 0.5 * 0.00694$
OTHER ROOM (Non-living area)	375	$-((340.7 + 340.7) * (23.6 - 176) + (340.7 + 334.7) * (176 - 176) + (334.7 + 334.7) * (176 - 172.9) + (334.7 + -14.9) * (172.9 - 172.9) + (-14.9 + -14.9) * (172.9 - 178.9) + (-14.9 + -20.9) * (178.9 - 178.9) + (-20.9 + -20.9) * (178.9 - 23.6) + (-20.9 + 340.7) * (23.6 - 23.6)) * 0.5 * 0.00694$