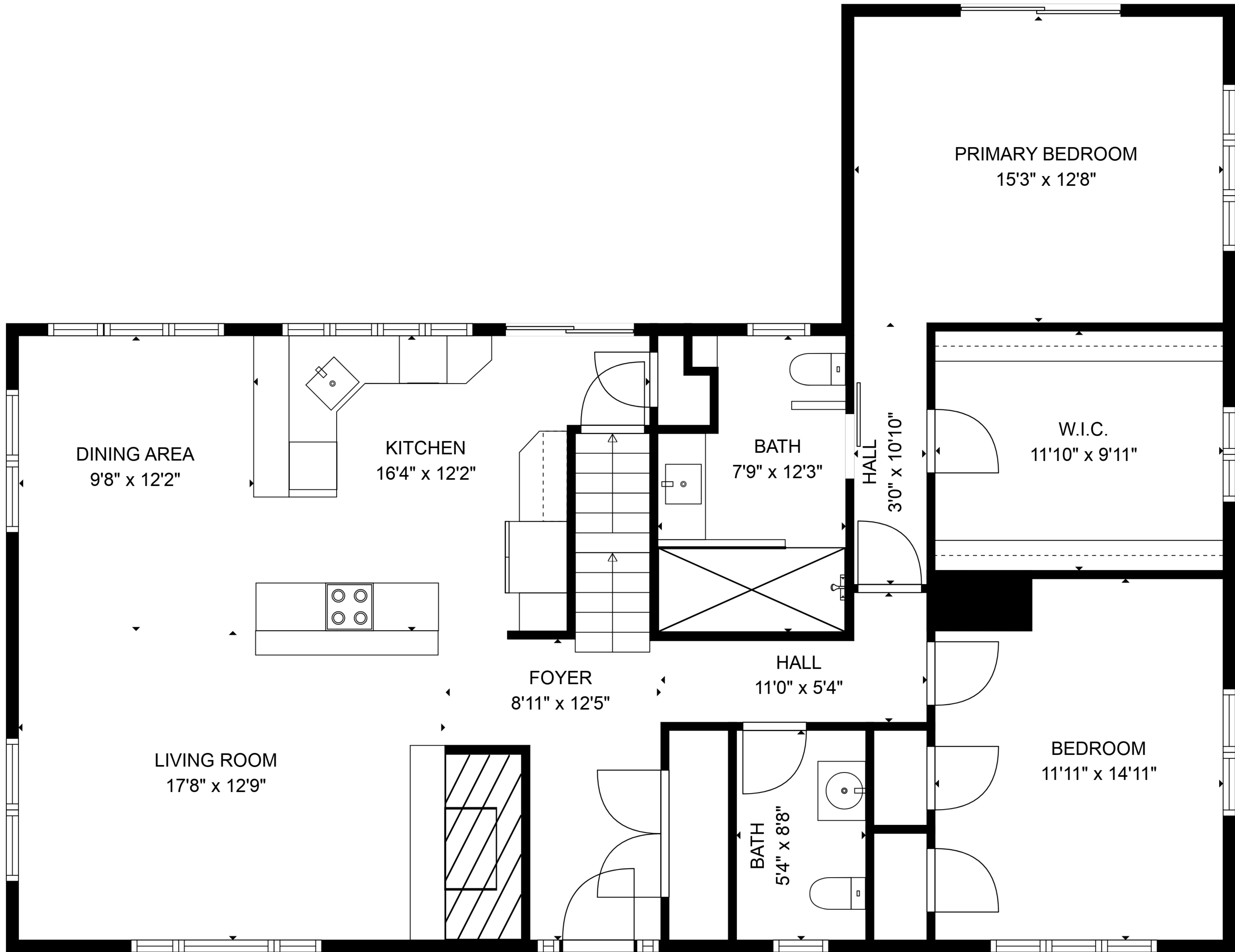


**TOTAL: 2861 sq. ft**  
 BELOW GROUND: 665 sq. ft, FLOOR 2: 1520 sq. ft, FLOOR 3: 676 sq. ft  
 EXCLUDED AREAS: GARAGE: 566 sq. ft, ELECTRICAL ROOM: 244 sq. ft, ATTIC: 64 sq. ft,  
 LOW CEILING: 10 sq. ft

Floor plans are intended to give a general indication of the property layout. Sizes and dimensions are estimate, Actual may vary.







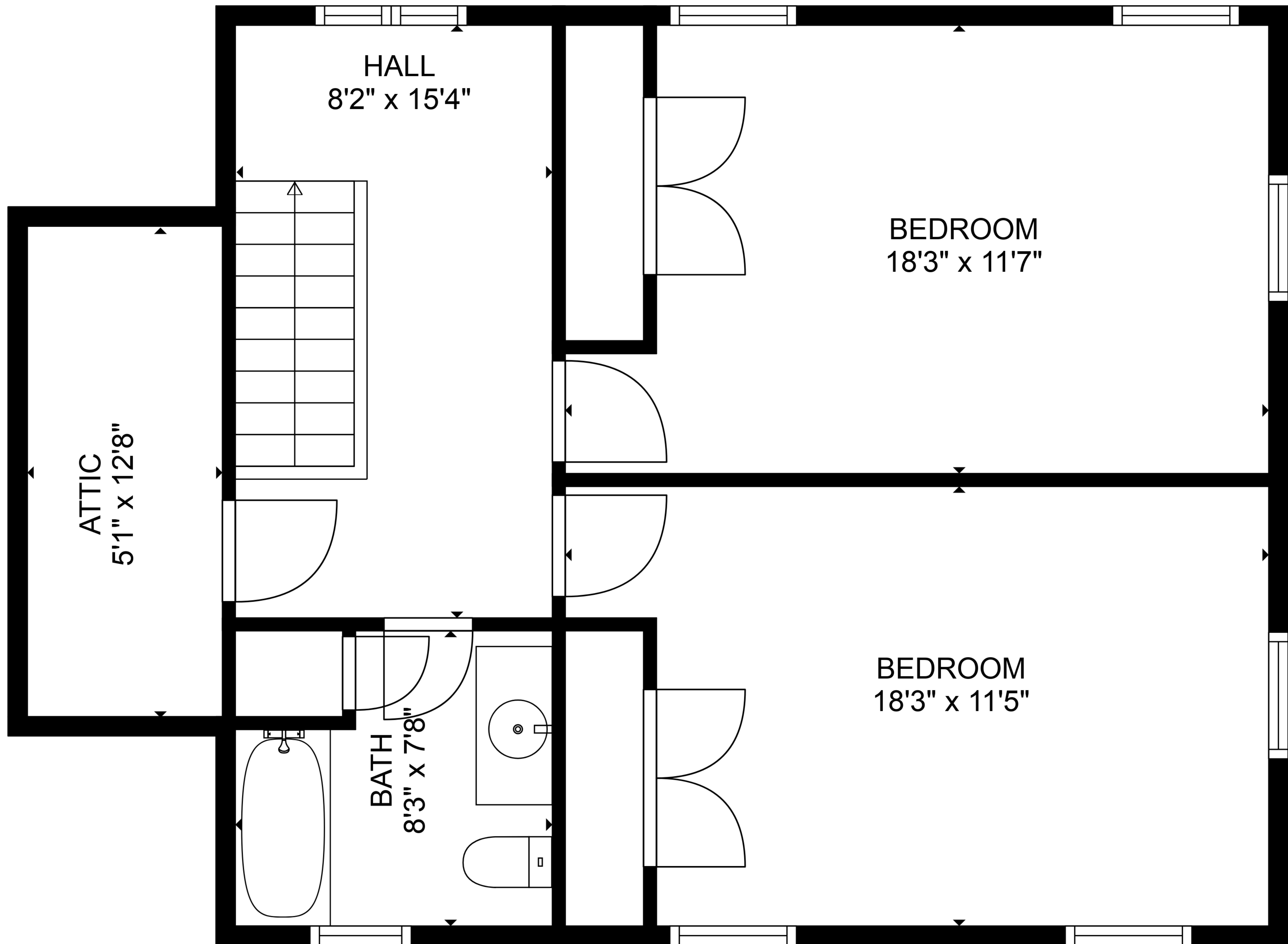
**TOTAL: 2861 sq. ft**

BELOW GROUND: 665 sq. ft, FLOOR 2: 1520 sq. ft, FLOOR 3: 676 sq. ft  
 EXCLUDED AREAS: GARAGE: 566 sq. ft, ELECTRICAL ROOM: 244 sq. ft, ATTIC: 64 sq. ft,  
 LOW CEILING: 10 sq. ft

Floor plans are intended to give a general indication of the property layout. Sizes and dimensions are estimate, Actual may vary.





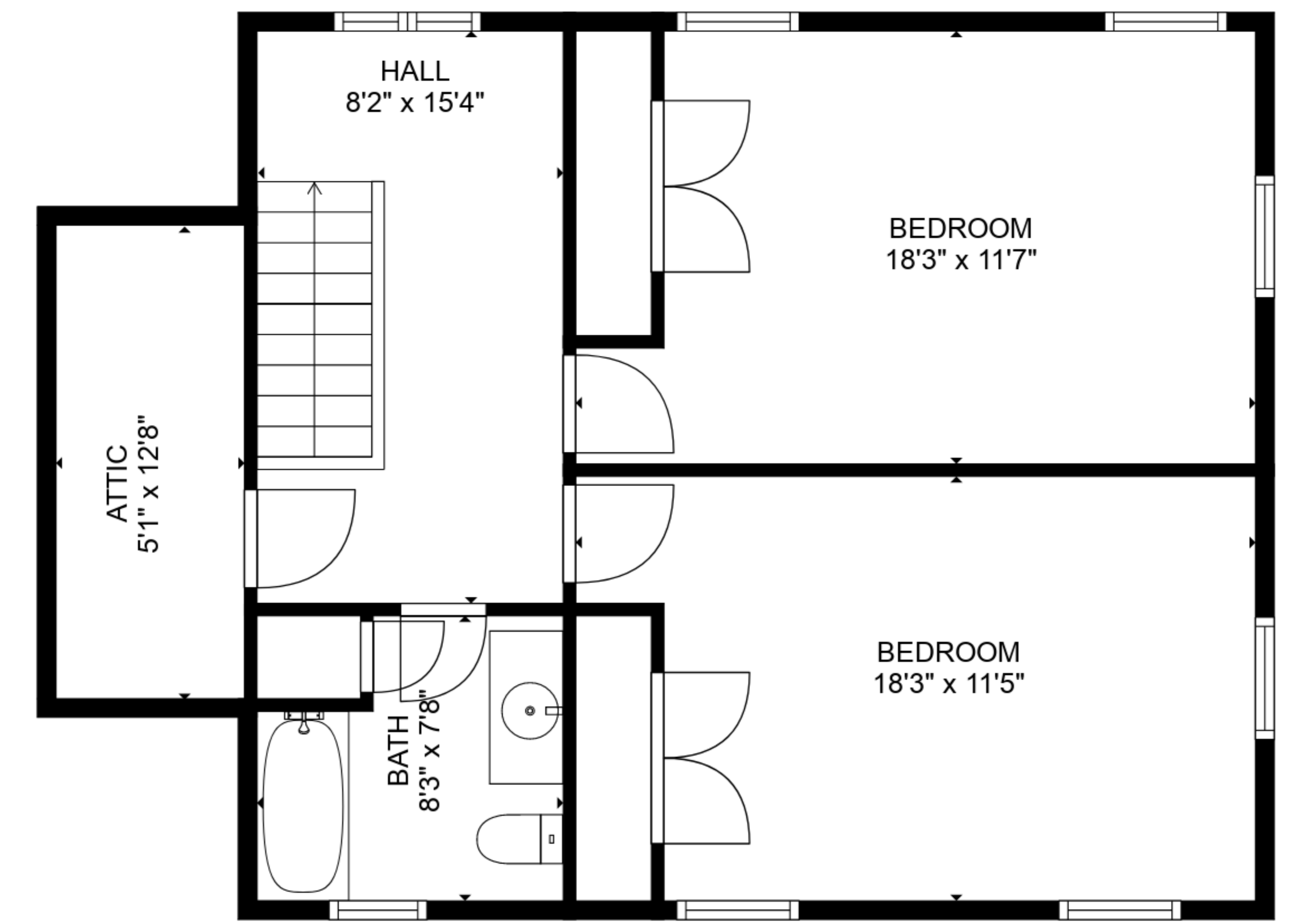


**TOTAL: 2861 sq. ft**  
 BELOW GROUND: 665 sq. ft, FLOOR 2: 1520 sq. ft, FLOOR 3: 676 sq. ft  
 EXCLUDED AREAS: GARAGE: 566 sq. ft, ELECTRICAL ROOM: 244 sq. ft, ATTIC: 64 sq. ft,  
 LOW CEILING: 10 sq. ft

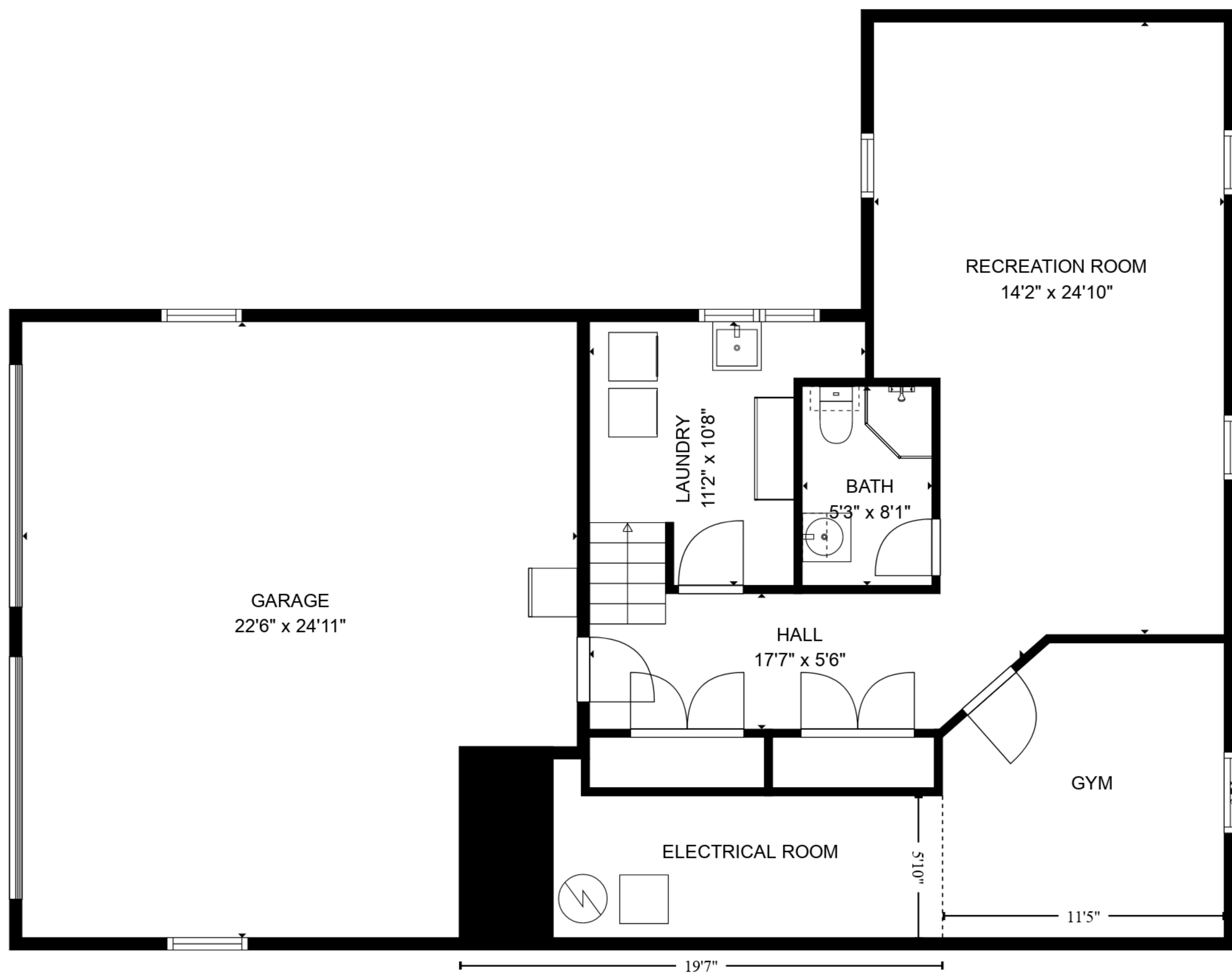
Floor plans are intended to give a general indication of the property layout. Sizes and dimensions are estimate, Actual may vary.



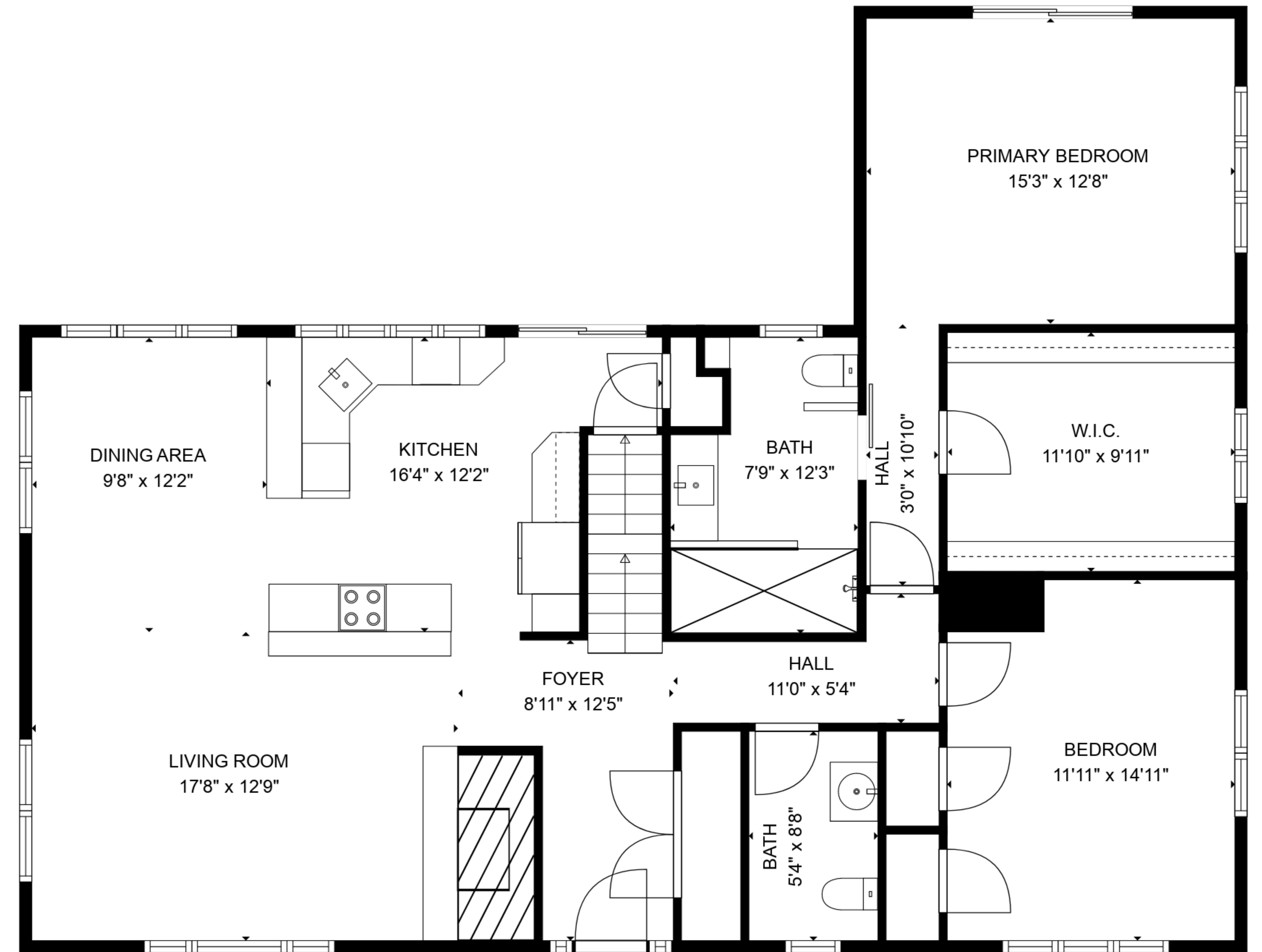




FLOOR 3



FLOOR 1



FLOOR 2

**TOTAL: 2861 sq. ft**

BELOW GROUND: 665 sq. ft, FLOOR 2: 1520 sq. ft, FLOOR 3: 676 sq. ft

EXCLUDED AREAS: GARAGE: 566 sq. ft, ELECTRICAL ROOM: 244 sq. ft, ATTIC: 64 sq. ft,

LOW CEILING: 10 sq. ft

Floor plans are intended to give a general indication of the property layout. Sizes and dimensions are estimate, Actual may vary.

