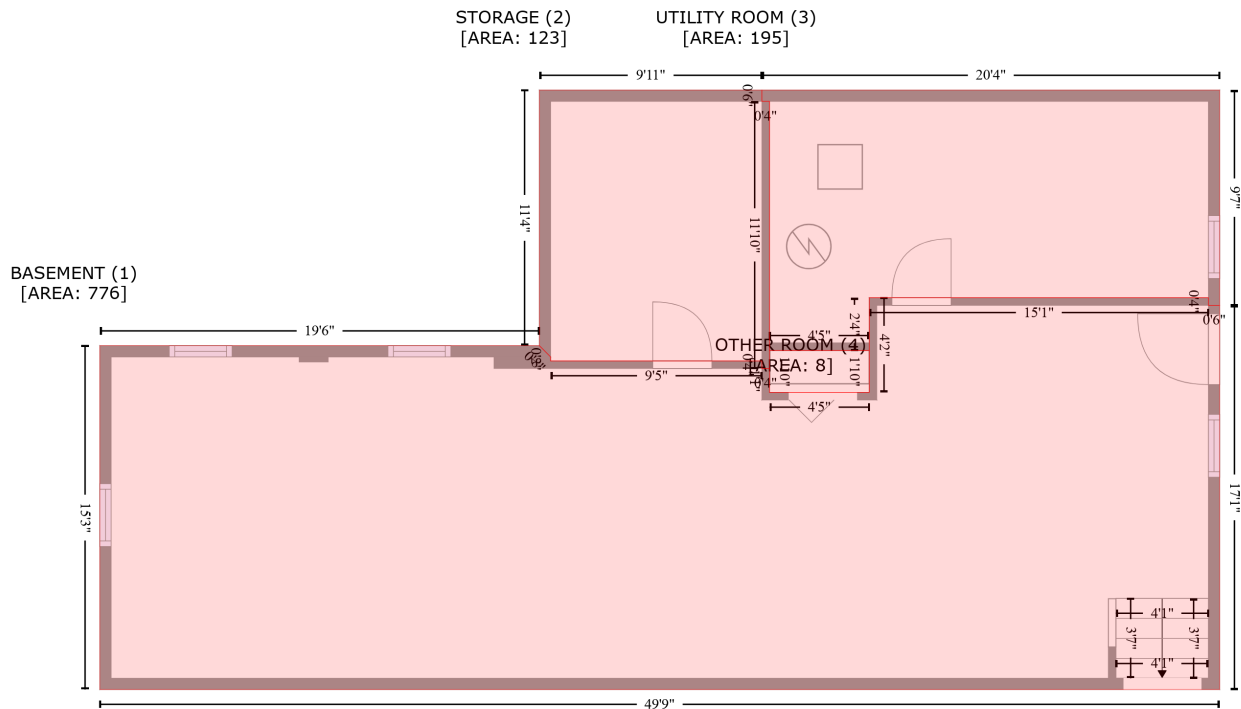


# 92 Brinleigh Drive, North Water Gap, Smithfield Township, East Stroudsburg, Monroe County, Pennsylvania, United States, 18301

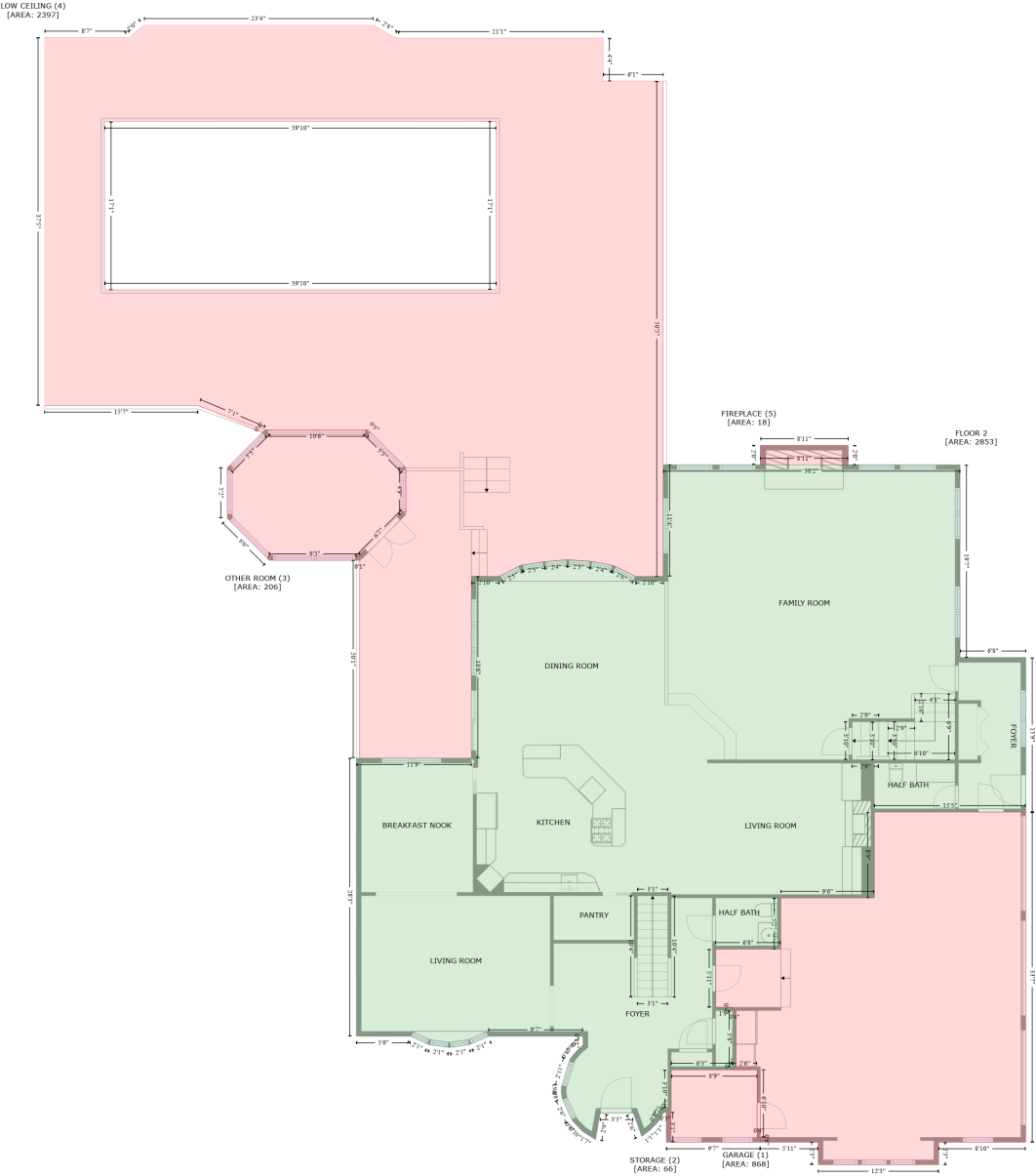
Gross Living Area: 5389 sq. ft



Space	Area (sq. ft)	Calculation
BASEMENT (Non-living area)	776	Coordinate Polygon Area Algorithm using inches $-((1169.9 + 1169.9) * (757.4 - 761.4) + (1169.9 + 1175.9) * (761.4 - 761.4) + (1175.9 + 1175.9) * (761.4 - 966.3) + (1175.9 + 579.4) * (966.3 - 966.3) + (579.4 + 579.4) * (966.3 - 783) + (579.4 + 813.5) * (783 - 783) + (813.5 + 819.5) * (783 - 789) + (819.5 + 819.5) * (789 - 791.1) + (819.5 + 932.1) * (791.1 - 791.1) + (932.1 + 932.1) * (791.1 - 795.1) + (932.1 + 936.1) * (795.1 - 795.1) + (936.1 + 936.1) * (795.1 - 807.9) + (936.1 + 989.3) * (807.9 - 807.9) + (989.3 + 989.3) * (807.9 - 757.4) + (989.3 + 1169.9) * (757.4 - 757.4)) * 0.5 * 0.00694$
STORAGE (Non-living area)	123	$-((932.1 + 932.1) * (646.7 - 652.7) + (932.1 + 936.1) * (652.7 - 652.7) + (936.1 + 936.1) * (652.7 - 795.1) + (936.1 + 932.1) * (795.1 - 795.1) + (932.1 + 819.5) * (791.1 - 791.1) + (819.5 + 819.5) * (791.1 - 789) + (819.5 + 813.5) * (789 - 783) + (813.5 + 813.5) * (783 - 646.7) + (813.5 + 932.1) * (646.7 - 646.7)) * 0.5 * 0.00694$
UTILITY ROOM (Non-living area)	195	$-((1175.9 + 1175.9) * (646.7 - 761.4) + (1175.9 + 1169.9) * (761.4 - 761.4) + (1169.9 + 1169.9) * (761.4 - 757.4) + (1169.9 + 989.3) * (757.4 - 757.4) + (989.3 + 989.3) * (757.4 - 785.5) + (989.3 + 936.1) * (785.5 - 785.5) + (936.1 + 936.1) * (785.5 - 652.7) + (936.1 + 932.1) * (652.7 - 652.7) + (932.1 + 932.1) * (652.7 - 646.7) + (932.1 + 1175.9) * (646.7 - 646.7)) * 0.5 * 0.00694$
OTHER ROOM (Non-living area)	8	$-((989.3 + 989.3) * (785.5 - 807.9) + (989.3 + 936.1) * (807.9 - 807.9) + (936.1 + 936.1) * (807.9 - 785.5) + (936.1 + 989.3) * (785.5 - 785.5)) * 0.5 * 0.00694$

# 92 Brinleigh Drive, North Water Gap, Smithfield Township, East Stroudsburg, Monroe County, Pennsylvania, United States, 18301

Gross Living Area: 5389 sq. ft



Space	Area (sq. ft)	Calculation
FLOOR 2 (Living area)	2853	Coordinate Polygon Area Algorithm using inches $-((1175.4 + 1175.4) * (656.2 - 891.4) + (1175.4 + 1255.7) * (891.4 - 891.4) + (1255.7 + 1255.7) * (891.4 - 1080) + (1255.7 + 1070.7) * (1080 - 1080) + (1070.7 + 1070.7) * (1080 - 1184.8) + (1070.7 + 956.6) * (1184.8 - 1184.8) + (956.6 + 956.6) * (1184.8 - 1247.2) + (956.6 + 877) * (1247.2 - 1247.2) + (877 + 877) * (1247.2 - 1318.2) + (877 + 897.6) * (1318.2 - 1318.2) + (897.6 + 897.6) * (1318.2 - 1322.2) + (897.6 + 901.6) * (1322.2 - 1322.2) + (901.6 + 901.6) * (1322.2 - 1390.6) + (901.6 + 897.6) * (1390.6 - 1394.6) + (897.6 + 822.8) * (1394.6 - 1394.6) + (822.8 + 822.8) * (1394.6 - 1440.5) + (822.8 + 816.8) * (1440.5 - 1446.5) + (816.8 + 813.9) * (1446.5 -$

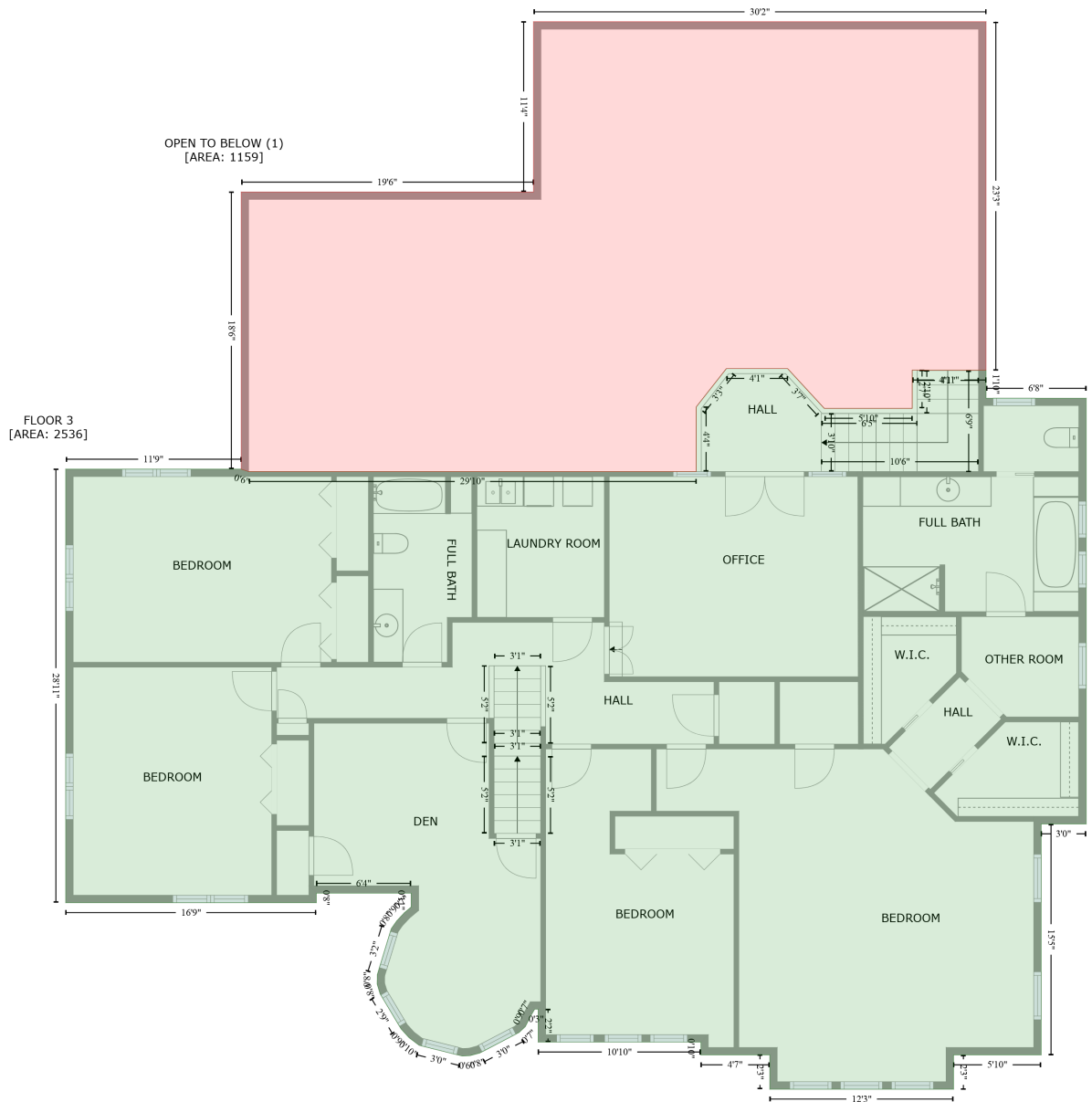
# 92 Brinleigh Drive, North Water Gap, Smithfield Township, East Stroudsburg, Monroe County, Pennsylvania, United States, 18301

Gross Living Area: 5389 sq. ft

Space	Area (sq. ft)	Calculation <small>Coordinate Polygon Area Algorithm using inches</small>
		$1446.5 + (813.9 + 810.4) * (1446.5 - 1452.5) + (810.4 + 806.5) * (1452.5 - 1458.6) + (806.5 + 797.4) * (1458.6 - 1467.9) + (797.4 + 786.9) * (1467.9 - 1475.9) + (786.9 + 776.6) * (1475.9 - 1447.5) + (776.6 + 736) * (1447.5 - 1447.5) + (736 + 730.3) * (1447.5 - 1479.8) + (730.3 + 714.4) * (1479.8 - 1469.6) + (714.4 + 707.5) * (1469.6 - 1462.6) + (707.5 + 701.8) * (1462.6 - 1456.4) + (701.8 + 689.7) * (1456.4 - 1429.4) + (689.7 + 688.6) * (1429.4 - 1422) + (688.6 + 688.9) * (1422 - 1415.6) + (688.9 + 699.1) * (1415.6 - 1382) + (699.1 + 703.4) * (1382 - 1375.8) + (703.4 + 709.6) * (1375.8 - 1369.2) + (709.6 + 715.1) * (1369.2 - 1364.6) + (715.1 + 715.1) * (1364.6 - 1353.6) + (715.1 + 599.8) * (1353.6 - 1353.6) + (599.8 + 577) * (1353.6 - 1363.7) + (577 + 552.1) * (1363.7 - 1367.3) + (552.1 + 527.1) * (1367.3 - 1363.8) + (527.1 + 504.7) * (1363.8 - 1353.6) + (504.7 + 438.4) * (1353.6 - 1353.6) + (438.4 + 438.4) * (1353.6 - 1014.3) + (438.4 + 578.9) * (1014.3 - 1014.3) + (578.9 + 578.9) * (1014.3 - 792.5) + (578.9 + 612.9) * (792.5 - 792.5) + (612.9 + 638.5) * (792.5 - 779.2) + (638.5 + 638.8) * (779.2 - 779) + (638.8 + 667.6) * (779 - 774.6) + (667.6 + 681.9) * (774.6 - 773.2) + (681.9 + 696) * (773.2 - 772.2) + (696 + 724.7) * (772.2 - 774) + (724.7 + 727.8) * (774 - 774.6) + (727.8 + 752.6) * (774.6 - 779.2) + (752.6 + 766.1) * (779.2 - 785.8) + (766.1 + 779.4) * (785.8 - 792.5) + (779.4 + 813) * (792.5 - 792.5) + (813 + 813) * (792.5 - 656.2) + (813 + 1175.4) * (656.2 - 656.2)) * 0.5 * 0.00694$
GARAGE (Non-living area)	868	$-(1255.7 + 1255.7) * (1080 - 1483) + (1255.7 + 1149.4) * (1483 - 1483) + (1149.4 + 1149.4) * (1483 - 1510.5) + (1149.4 + 1002.2) * (1510.5 - 1510.5) + (1002.2 + 1002.2) * (1510.5 - 1483) + (1002.2 + 931.7) * (1483 - 1483) + (931.7 + 931.7) * (1483 - 1477) + (931.7 + 927.7) * (1477 - 1477) + (927.7 + 927.7) * (1477 - 1394.6) + (927.7 + 897.6) * (1394.6 - 1394.6) + (897.6 + 901.6) * (1394.6 - 1390.6) + (901.6 + 901.6) * (1390.6 - 1322.2) + (901.6 + 897.6) * (1322.2 - 1322.2) + (897.6 + 897.6) * (1322.2 - 1318.2) + (897.6 + 877) * (1318.2 - 1318.2) + (877 + 877) * (1318.2 - 1247.2) + (877 + 956.6) * (1247.2 - 1247.2) + (956.6 + 956.6) * (1247.2 - 1184.8) + (956.6 + 1070.7) * (1184.8 - 1184.8) + (1070.7 + 1070.7) * (1184.8 - 1080) + (1070.7 + 1255.7) * (1080 - 1080)) * 0.5 * 0.00694$
STORAGE (Non-living area)	66	$-(927.7 + 927.7) * (1394.6 - 1477) + (927.7 + 931.7) * (1477 - 1477) + (931.7 + 931.7) * (1477 - 1483) + (931.7 + 816.8) * (1483 - 1483) + (816.8 + 816.8) * (1483 - 1446.5) + (816.8 + 822.8) * (1446.5 - 1440.5) + (822.8 + 822.8) * (1440.5 - 1394.6) + (822.8 + 927.7) * (1394.6 - 1394.6)) * 0.5 * 0.00694$
OTHER ROOM (Non-living area)	206	$-(452.9 + 498.9) * (613.7 - 659.9) + (498.9 + 498.9) * (659.9 - 716.9) + (498.9 + 443.3) * (716.9 - 772.8) + (443.3 + 332) * (772.8 - 772.8) + (332 + 280.9) * (772.8 - 721.5) + (280.9 + 280.9) * (721.5 - 659.7) + (280.9 + 326.9) * (659.7 - 613.7) + (326.9 + 452.9) * (613.7 - 613.7)) * 0.5 * 0.00694$
LOW CEILING (Non-living area)	2397	$-(459 + 486.5) * (119.6 - 135.5) + (486.5 + 739.6) * (135.5 - 135.5) + (739.6 + 739.6) * (135.5 - 187.9) + (739.6 + 813) * (187.9 - 187.9) + (813 + 813) * (187.9 - 792.5) + (813 + 779.4) * (792.5 - 792.5) + (779.4 + 752.6) * (792.5 - 779.2) + (752.6 + 724.7) * (779.2 - 774) + (724.7 + 695.8) * (774 - 772.2) + (695.8 + 667.6) * (772.2 - 774.6) + (667.6 + 638.8) * (774.6 - 779) + (638.8 + 612.9) * (779 - 792.5) + (612.9 + 578.9) * (792.5 - 792.5) + (578.9 + 578.9) * (792.5 - 1014.3) + (578.9 + 442.4) * (1014.3 - 1014.3) + (442.4 + 442.4) * (1014.3 - 772.8) + (442.4 + 443.3) * (772.8 - 772.8) + (443.3 + 498.9) * (772.8 - 716.9) + (498.9 + 498.9) * (716.9 - 659.9) + (498.9 + 456.7) * (659.9 - 617.4) + (456.7 + 452.9) * (617.4 - 613.7) + (452.9 + 326.9) * (613.7 - 613.7) + (326.9 + 324) * (613.7 - 616.9) + (324 + 245.1) * (616.9 - 583.9) + (245.1 + 57.7) * (583.9 - 583.9) + (57.7 + 57.7) * (583.9 - 134.8) + (57.7 + 160.8) * (134.8 - 134.8) + (160.8 + 179) * (134.8 - 119.6) + (179 + 459) * (119.6 - 119.6)) * 0.5 * 0.00694 + -((609.2 + 131.1) * (237.3 - 237.3) + (131.1 + 131.1) * (237.3 - 442.7) + (131.1 + 609.2) * (442.7 - 442.7) + (609.2 + 609.2) * (442.7 - 237.3)) * 0.5 * 0.00694$
FIREPLACE (Non-living area)	18	$-(1038.9 + 1038.9) * (632.4 - 656.2) + (1038.9 + 931.5) * (656.2 - 656.2) + (931.5 + 931.5) * (656.2 - 632.4) + (931.5 + 1038.9) * (632.4 - 632.4)) * 0.5 * 0.00694$

# 92 Brinleigh Drive, North Water Gap, Smithfield Township, East Stroudsburg, Monroe County, Pennsylvania, United States, 18301

Gross Living Area: 5389 sq. ft



Space	Area (sq. ft)	Calculation
FLOOR 3 (Living area)	2536	Coordinate Polygon Area Algorithm using inches $-((1004.9 + 1034.3) * (940.8 - 972.6) + (1034.3 + 1104.7) * (972.6 - 972.6) + (1104.7 + 1104.7) * (972.6 - 942) + (1104.7 + 1163.8) * (942 - 942) + (1163.8 + 1163.8) * (942 - 964.4) + (1163.8 + 1244) * (964.4 - 964.4) + (1244 + 1244) * (964.4 - 1305.2) + (1244 + 1208) * (1305.2 - 1305.2) + (1208 + 1208) * (1305.2 - 1489.9) + (1208 + 1137.8) * (1489.9 - 1489.9) + (1137.8 + 1137.8) * (1489.9 - 1517.4) + (1137.8 + 990.6) * (1517.4 - 1517.4) + (990.6 + 990.6) * (1517.4 - 1489.9) + (990.6 + 935.4) * (1489.9 - 1489.9) + (935.4 + 935.4) * (1489.9 - 1479.7) + (935.4 + 805.1) * (1479.7 - 1479.7) + (805.1 + 805.1) * (1479.7 - 1453.4) + (805.1 + 802.3) * (1453.4 - 1453.4) +$

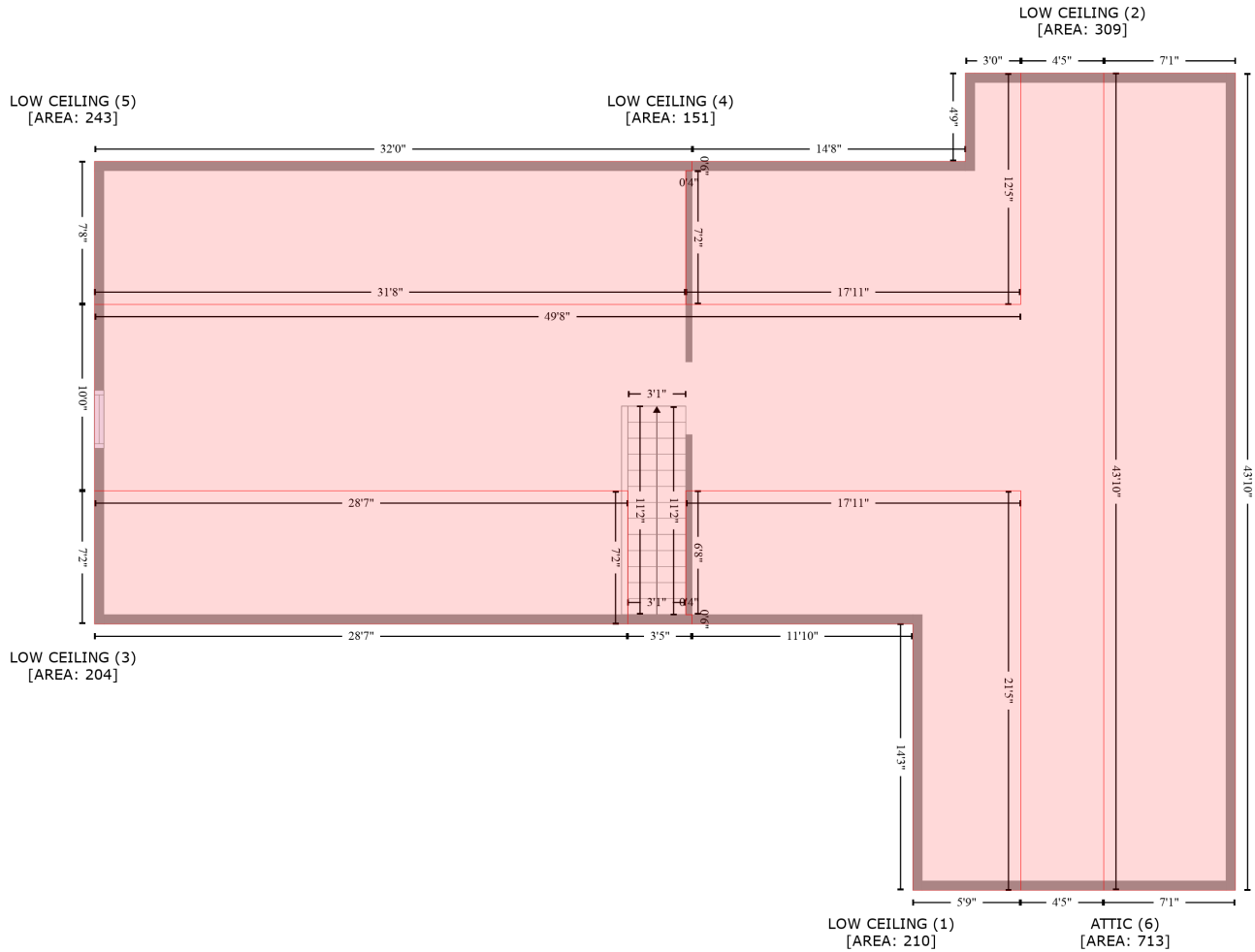
# 92 Brinleigh Drive, North Water Gap, Smithfield Township, East Stroudsburg, Monroe County, Pennsylvania, United States, 18301

Gross Living Area: 5389 sq. ft

Space	Area (sq. ft)	Calculation <small>Coordinate Polygon Area Algorithm using inches</small>
		$(802.3 + 798.9) * (1453.4 - 1459.1) + (798.9 + 794.9) * (1459.1 - 1467.3) + (794.9 + 789.8) * (1467.3 - 1472) + (789.8 + 758.3) * (1472 - 1488.4) + (758.3 + 750.7) * (1488.4 - 1490.5) + (750.7 + 744.2) * (1490.5 - 1490.8) + (744.2 + 709.7) * (1490.8 - 1482.2) + (709.7 + 701.7) * (1482.2 - 1476.1) + (701.7 + 695.3) * (1476.1 - 1469.2) + (695.3 + 678.5) * (1469.2 - 1441) + (678.5 + 676.2) * (1441 - 1433.4) + (676.2 + 676.2) * (1433.4 - 1425.7) + (676.2 + 687.5) * (1425.7 - 1388.9) + (687.5 + 691.8) * (1388.9 - 1382.8) + (691.8 + 697.9) * (1382.8 - 1376.1) + (697.9 + 703.4) * (1376.1 - 1371.6) + (703.4 + 703.4) * (1371.6 - 1360.6) + (703.4 + 627.5) * (1360.6 - 1360.6) + (627.5 + 627.5) * (1360.6 - 1368.2) + (627.5 + 426.7) * (1368.2 - 1368.2) + (426.7 + 426.7) * (1368.2 - 1021.2) + (426.7 + 567.2) * (1021.2 - 1021.2) + (567.2 + 573.2) * (1021.2 - 1023.2) + (573.2 + 931.7) * (1023.2 - 1023.2) + (931.7 + 931.7) * (1023.2 - 971.4) + (931.7 + 955.8) * (971.4 - 940.8) + (955.8 + 1004.9) * (940.8 - 940.8) * 0.5 * 0.00694$
OPEN TO BELOW (Non-living area)	1159	$-((1163.8 + 1163.8) * (663.2 - 942) + (1163.8 + 1104.7) * (942 - 942) + (1104.7 + 1104.7) * (942 - 972.6) + (1104.7 + 1034.3) * (972.6 - 972.6) + (1034.3 + 1004.9) * (972.6 - 940.8) + (1004.9 + 955.8) * (940.8 - 940.8) + (955.8 + 931.7) * (940.8 - 971.4) + (931.7 + 931.7) * (971.4 - 1023.2) + (931.7 + 573.2) * (1023.2 - 1023.2) + (573.2 + 567.2) * (1023.2 - 1021.2) + (567.2 + 567.2) * (1021.2 - 799.4) + (567.2 + 801.4) * (799.4 - 799.4) + (801.4 + 801.4) * (799.4 - 663.2) + (801.4 + 1163.8) * (663.2 - 663.2)) * 0.5 * 0.00694$

92 Brinleigh Drive, North Water Gap, Smithfield Township, East Stroudsburg, Monroe County, Pennsylvania, United States, 18301

Gross Living Area: 5389 sq. ft



Space	Area (sq. ft)	Calculation
LOW CEILING (Non-living area)	210	$-\left((1034.1 + 1034.1) * (1240.9 - 1497.8) + (1034.1 + 964.6) * (1497.8 - 1497.8) + (964.6 + 964.6) * (1497.8 - 1326.6) + (964.6 + 822.6) * (1326.6 - 1326.6) + (822.6 + 822.6) * (1326.6 - 1320.6) + (822.6 + 818.6) * (1320.6 - 1320.6) + (818.6 + 818.6) * (1320.6 - 1240.9) + (818.6 + 1034.1) * (1240.9 - 1240.9)\right) * 0.5 * 0.00694$
LOW CEILING (Non-living area)	309	$-\left((1172.1 + 1172.1) * (972.3 - 1497.8) + (1172.1 + 1087.5) * (1497.8 - 1497.8) + (1087.5 + 1087.5) * (1497.8 - 972.3) + (1087.5 + 1172.1) * (972.3 - 972.3)\right) * 0.5 * 0.00694$
LOW CEILING (Non-living area)	204	$-\left((781.3 + 781.3) * (1240.9 - 1326.6) + (781.3 + 438.2) * (1326.6 - 1326.6) + (438.2 + 438.2) * (1326.6 - 1240.9) + (438.2 + 781.3) * (1240.9 - 1240.9)\right) * 0.5 * 0.00694$
LOW CEILING (Non-living area)	151	$-\left((1034 + 1034) * (972.3 - 1121) + (1034 + 818.6) * (1121 - 1121) + (818.6 + 818.6) * (1121 - 1035) + (818.6 + 822.6) * (1035 - 1035) + (822.6 + 822.6) * (1035 - 1029) + (822.6 + 998.5) * (1029 - 1029) + (998.5 + 998.5) * (1029 - 972.3) + (998.5 + 1034) * (972.3 - 972.3)\right) * 0.5 * 0.00694$
LOW CEILING (Non-living area)	243	$-\left((822.6 + 822.6) * (1029 - 1035) + (822.6 + 818.6) * (1035 - 1035) + (818.6 + 818.6) * (1035 - 1121) + (818.6 + 438.2) * (1121 - 1121) + (438.2 + 438.2) * (1121 - 1029) + (438.2 + 822.6) * (1029 - 1029)\right) * 0.5 * 0.00694$

# 92 Brinleigh Drive, North Water Gap, Smithfield Township, East Stroudsburg, Monroe County, Pennsylvania, United States, 18301

Gross Living Area: 5389 sq. ft

Space	Area (sq. ft)	Calculation <small>Coordinate Polygon Area Algorithm using inches</small>
ATTIC (Non-living area)	713	$(1029 - 1029) * 0.5 * 0.00694$ $-((1087.5 + 1087.5) * (972.3 - 1497.8) + (1087.5 + 1034.1) * (1497.8 - 1497.8) + (1034.1 + 1034.1) * (1497.8 - 1240.9) + (1034.1 + 818.6) * (1240.9 - 1240.9) + (818.6 + 818.6) * (1240.9 - 1320.6) + (818.6 + 822.6) * (1320.6 - 1320.6) + (822.6 + 822.6) * (1320.6 - 1326.6) + (822.6 + 781.3) * (1326.6 - 1326.6) + (781.3 + 781.3) * (1326.6 - 1240.9) + (781.3 + 438.2) * (1240.9 - 1240.9) + (438.2 + 438.2) * (1240.9 - 1121) + (438.2 + 1034) * (1121 - 1121) + (1034 + 1034) * (1121 - 972.3) + (1034 + 1087.5) * (972.3 - 972.3)) * 0.5 * 0.00694$