


6218 Saddleridge Lane, Brookwood, Cave Spring, Roanoke, Roanoke County, Virginia, United



Property Summary

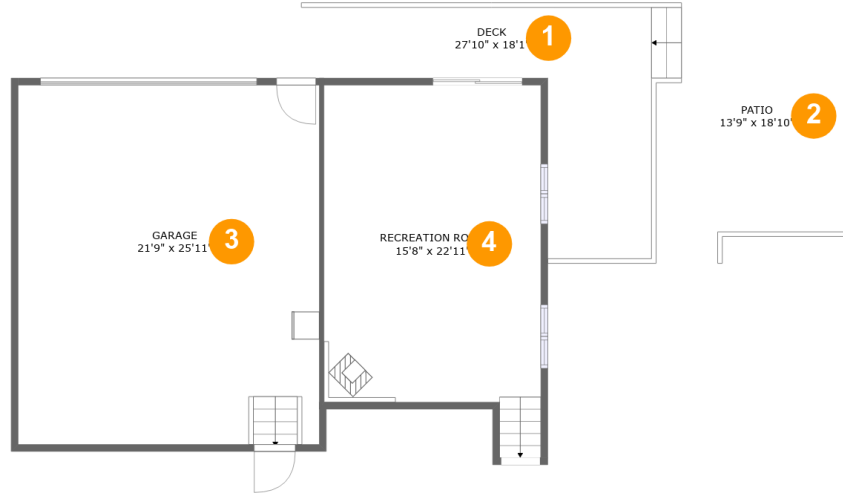
 **1** garages  **4** bedrooms  **3** bathrooms  **0** half baths

 **3** floors

 **2,495** Gross Living Area sqft

 **4,707** total sqft

6218 Saddleridge Lane, Brookwood, Cave Spring, Roanoke, Roanoke County, Virginia, United



Room Dimensions

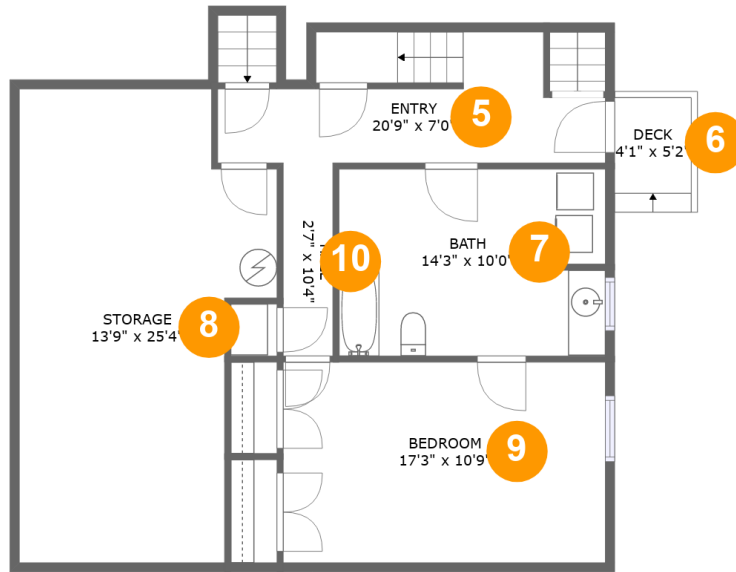
Floor 1

Total sqft: 1494

Living area: 0

#	Room name	Dimensions	Area (sqft)	Counted as Living Area
1	Deck	27'10" x 18'1"	251 sq. ft	No
2	Patio	13'9" x 18'10"	232 sq. ft	No
3	Garage	21'9" x 25'11"	564 sq. ft	No
4	Recreation Room	15'8" x 22'11"	371 sq. ft	No

6218 Saddleridge Lane, Brookwood, Cave Spring, Roanoke, Roanoke County, Virginia, United



Room Dimensions

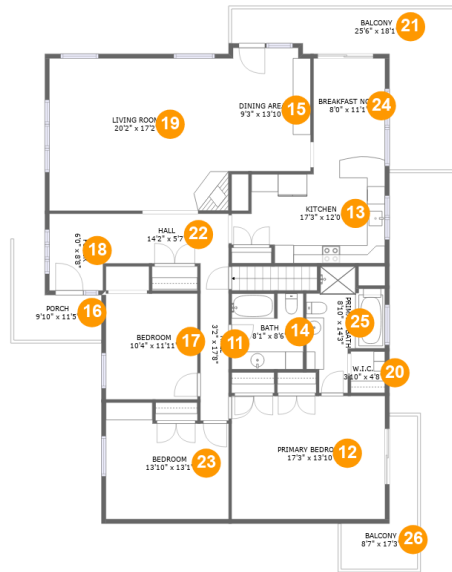
Floor 2

Total sqft: 946

Living area: 602

#	Room name	Dimensions	Area (sqft)	Counted as Living Area
5	Entry	20'9" x 7'0"	115 sq. ft	Yes
6	Deck	4'1" x 5'2"	25 sq. ft	No
7	Bath	14'3" x 10'0"	142 sq. ft	Yes
8	Storage	13'9" x 25'4"	295 sq. ft	No
9	Bedroom	17'3" x 10'9"	185 sq. ft	Yes
10	Hall	2'7" x 10'4"	27 sq. ft	Yes

6218 Saddleridge Lane, Brookwood, Cave Spring, Roanoke, Roanoke County, Virginia, United



Room Dimensions

Floor 3

Total sqft: 2267

Living area: 1893

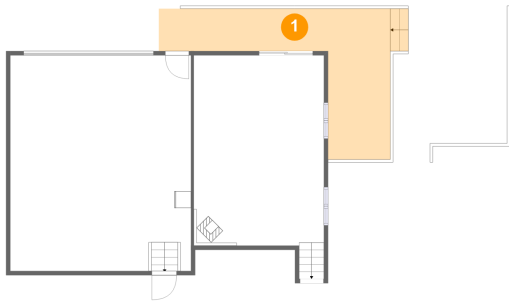
#	Room name	Dimensions	Area (sqft)	Counted as Living Area
11	Hall	3'2" x 17'8"	56 sq. ft	Yes
12	Primary Bedroom	17'3" x 13'10"	239 sq. ft	Yes
13	Kitchen	17'3" x 12'0"	169 sq. ft	Yes
14	Bath	8'1" x 8'6"	68 sq. ft	Yes
15	Dining Area	9'3" x 13'10"	126 sq. ft	Yes
16	Porch	9'10" x 11'5"	72 sq. ft	No
17	Bedroom	10'4" x 11'11"	123 sq. ft	Yes
18	Foyer	6'0" x 8'8"	52 sq. ft	Yes
19	Living Room	20'2" x 17'2"	346 sq. ft	Yes
20	W.i.c.	3'10" x 4'8"	18 sq. ft	Yes
21	Balcony	25'6" x 18'1"	220 sq. ft	No

**6218 Saddleridge Lane, Brookwood, Cave Spring,
Roanoke, Roanoke County, Virginia, United**

#	Room name	Dimensions	Area (sqft)	Counted as Living Area
22	Hall	14'2" x 5'7"	79 sq. ft	Yes
23	Bedroom	13'10" x 13'1"	161 sq. ft	Yes
24	Breakfast Nook	8'0" x 11'1"	89 sq. ft	Yes
25	Primary Bath	8'10" x 14'3"	88 sq. ft	Yes
26	Balcony	8'7" x 17'3"	82 sq. ft	No

6218 Saddleridge Lane, Brookwood, Cave Spring, Roanoke, Roanoke County, Virginia, United

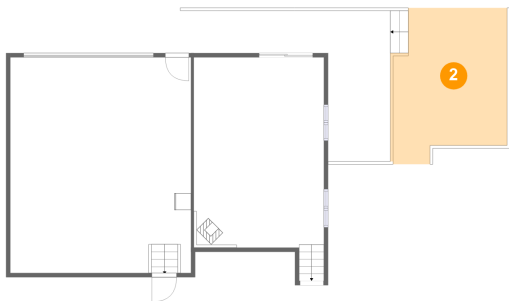
1 Floor 1 - Deck



Dimensions: 27'10" x 18'1"
Area: 251 sq. ft
Counted as Living Area: No

Heated: No
Finished: Yes
Enclosed: No
Contiguous: Yes
Permitted: Yes
Wet Space: No
Addition: No
Conversion: No

2 Floor 1 - Patio

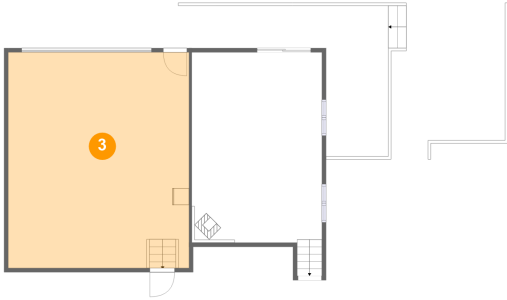


Dimensions: 13'9" x 18'10"
Area: 232 sq. ft
Counted as Living Area: No

Heated: No
Finished: Yes
Enclosed: No
Contiguous: Yes
Permitted: Yes
Wet Space: No
Addition: No
Conversion: No

6218 Saddleridge Lane, Brookwood, Cave Spring, Roanoke, Roanoke County, Virginia, United

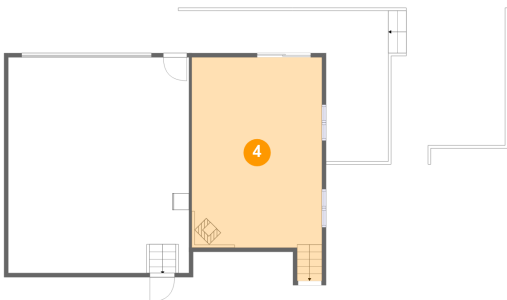
3 Floor 1 - Garage



Dimensions: 21'9" x 25'11"
Area: 564 sq. ft
Counted as Living Area: No

Heated: No
Finished: No
Enclosed: Yes
Contiguous: Yes
Permitted: Yes
Wet Space: No
Addition: No
Conversion: No

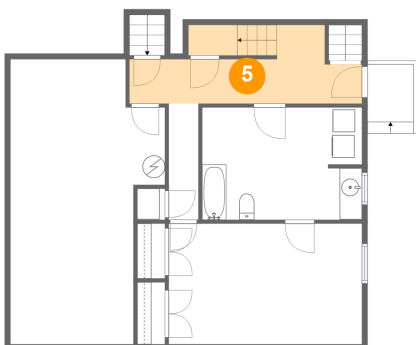
4 Floor 1 - Recreation Room



Dimensions: 15'8" x 22'11"
Area: 371 sq. ft
Counted as Living Area: No

Heated: Yes
Finished: Yes
Enclosed: Yes
Contiguous: No
Permitted: Yes
Wet Space: No
Addition: No
Conversion: No

5 Floor 2 - Entry

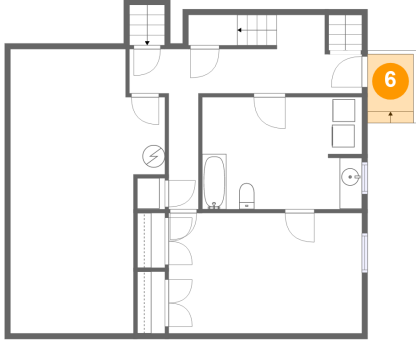


Dimensions: 20'9" x 7'0"
Area: 115 sq. ft
Counted as Living Area: Yes

Heated: Yes
Finished: Yes
Enclosed: Yes
Contiguous: Yes
Permitted: Yes
Wet Space: No
Addition: No
Conversion: No

6218 Saddleridge Lane, Brookwood, Cave Spring, Roanoke, Roanoke County, Virginia, United

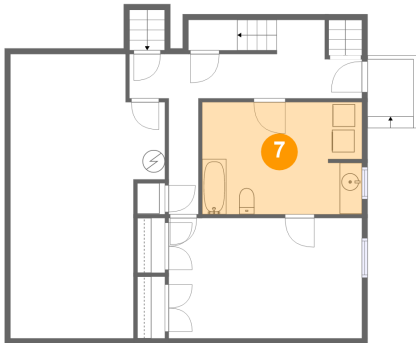
6 Floor 2 - Deck



Dimensions: 4'1" x 5'2"
Area: 25 sq. ft
Counted as Living Area: No

Heated: No
Finished: Yes
Enclosed: No
Contiguous: Yes
Permitted: Yes
Wet Space: No
Addition: No
Conversion: No

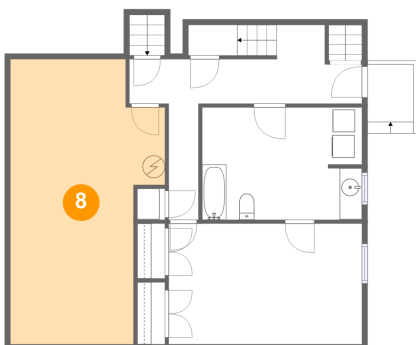
7 Floor 2 - Bath



Dimensions: 14'3" x 10'0"
Area: 142 sq. ft
Counted as Living Area:
Yes

Heated: Yes
Finished: Yes
Enclosed: Yes
Contiguous:
Yes
Permitted: Yes
Wet Space: Yes
Addition: No
Conversion: No

8 Floor 2 - Storage

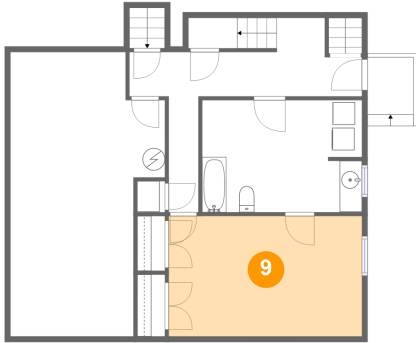


Dimensions: 13'9" x 25'4"
Area: 295 sq. ft
Counted as Living Area: No

Heated: No
Finished: No
Enclosed: No
Contiguous: Yes
Permitted: Yes
Wet Space: No
Addition: No
Conversion: No

6218 Saddleridge Lane, Brookwood, Cave Spring, Roanoke, Roanoke County, Virginia, United

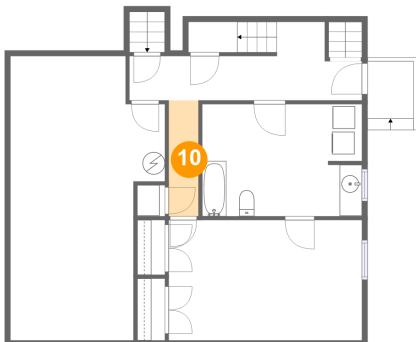
9 Floor 2 - Bedroom



Dimensions: 17'3" x 10'9"
Area: 185 sq. ft
Counted as Living Area:
Yes

Heated: Yes
Finished: Yes
Enclosed: Yes
Contiguous:
Yes
Permitted: Yes
Wet Space: No
Addition: No
Conversion: No

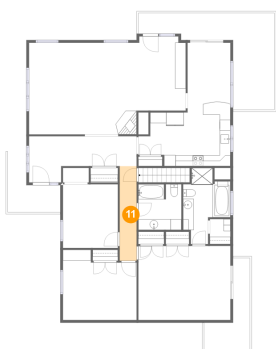
10 Floor 2 - Hall



Dimensions: 2'7" x 10'4"
Area: 27 sq. ft
Counted as Living Area:
Yes

Heated: Yes
Finished: Yes
Enclosed: Yes
Contiguous:
Yes
Permitted: Yes
Wet Space: No
Addition: No
Conversion: No

11 Floor 3 - Hall

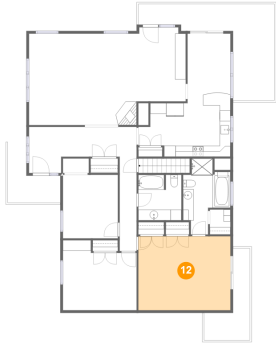


Dimensions: 3'2" x 17'8"
Area: 56 sq. ft
Counted as Living Area:
Yes

Heated: Yes
Finished: Yes
Enclosed: Yes
Contiguous:
Yes
Permitted: Yes
Wet Space: No
Addition: No
Conversion: No

6218 Saddleridge Lane, Brookwood, Cave Spring, Roanoke, Roanoke County, Virginia, United

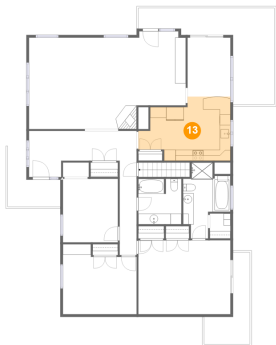
12 Floor 3 - Primary Bedroom



Dimensions: 17'3" x 13'10"
Area: 239 sq. ft
Counted as Living Area:
Yes

Heated: Yes
Finished: Yes
Enclosed: Yes
Contiguous:
Yes
Permitted: Yes
Wet Space: No
Addition: No
Conversion: No

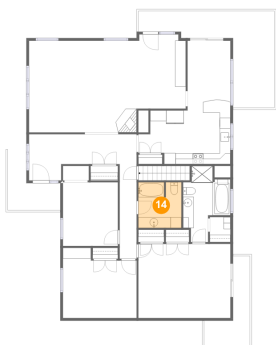
13 Floor 3 - Kitchen



Dimensions: 17'3" x 12'0"
Area: 169 sq. ft
Counted as Living Area:
Yes

Heated: Yes
Finished: Yes
Enclosed: Yes
Contiguous:
Yes
Permitted: Yes
Wet Space: No
Addition: No
Conversion: No

14 Floor 3 - Bath

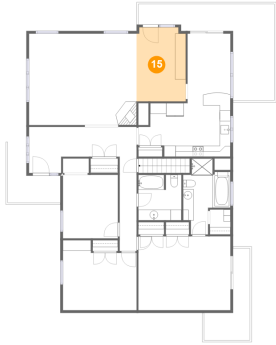


Dimensions: 8'1" x 8'6"
Area: 68 sq. ft
Counted as Living Area:
Yes

Heated: Yes
Finished: Yes
Enclosed: Yes
Contiguous:
Yes
Permitted: Yes
Wet Space: Yes
Addition: No
Conversion: No

6218 Saddleridge Lane, Brookwood, Cave Spring, Roanoke, Roanoke County, Virginia, United

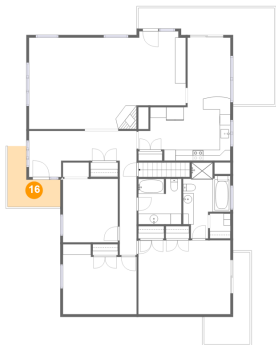
15 Floor 3 - Dining Area



Dimensions: 9'3" x 13'10"
Area: 126 sq. ft
Counted as Living Area:
Yes

Heated: Yes
Finished: Yes
Enclosed: Yes
Contiguous:
Yes
Permitted: Yes
Wet Space: No
Addition: No
Conversion: No

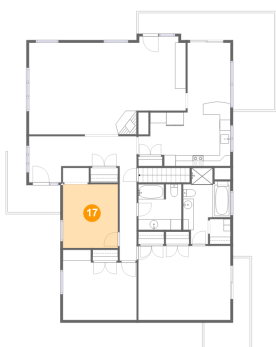
16 Floor 3 - Porch



Dimensions: 9'10" x 11'5"
Area: 72 sq. ft
Counted as Living Area: No

Heated: No
Finished: Yes
Enclosed: No
Contiguous: Yes
Permitted: Yes
Wet Space: No
Addition: No
Conversion: No

17 Floor 3 - Bedroom

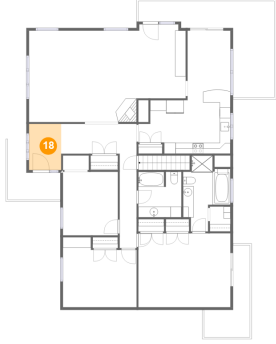


Dimensions: 10'4" x 11'11"
Area: 123 sq. ft
Counted as Living Area:
Yes

Heated: Yes
Finished: Yes
Enclosed: Yes
Contiguous:
Yes
Permitted: Yes
Wet Space: No
Addition: No
Conversion: No

6218 Saddleridge Lane, Brookwood, Cave Spring, Roanoke, Roanoke County, Virginia, United

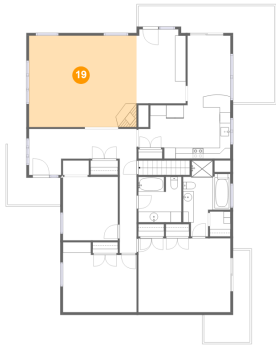
18 Floor 3 - Foyer



Dimensions: 6'0" x 8'8"
Area: 52 sq. ft
Counted as Living Area:
Yes

Heated: Yes
Finished: Yes
Enclosed: Yes
Contiguous:
Yes
Permitted: Yes
Wet Space: No
Addition: No
Conversion: No

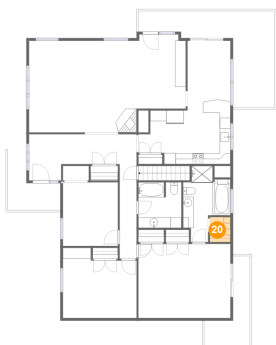
19 Floor 3 - Living Room



Dimensions: 20'2" x 17'2"
Area: 346 sq. ft
Counted as Living Area:
Yes

Heated: Yes
Finished: Yes
Enclosed: Yes
Contiguous:
Yes
Permitted: Yes
Wet Space: No
Addition: No
Conversion: No

20 Floor 3 - W.i.c.

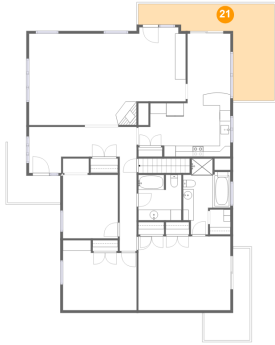


Dimensions: 3'10" x 4'8"
Area: 18 sq. ft
Counted as Living Area:
Yes

Heated: Yes
Finished: Yes
Enclosed: Yes
Contiguous:
Yes
Permitted: Yes
Wet Space: No
Addition: No
Conversion: No

6218 Saddleridge Lane, Brookwood, Cave Spring, Roanoke, Roanoke County, Virginia, United

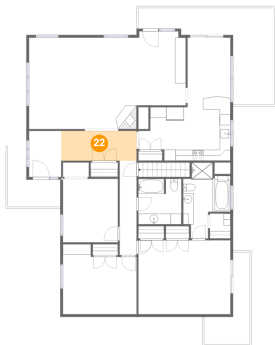
21 Floor 3 - Balcony



Dimensions: 25'6" x 18'1"
Area: 220 sq. ft
Counted as Living Area: No

Heated: No
Finished: Yes
Enclosed: No
Contiguous: Yes
Permitted: Yes
Wet Space: No
Addition: No
Conversion: No

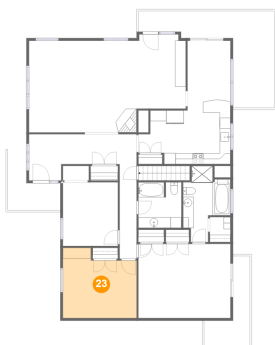
22 Floor 3 - Hall



Dimensions: 14'2" x 5'7"
Area: 79 sq. ft
Counted as Living Area:
Yes

Heated: Yes
Finished: Yes
Enclosed: Yes
Contiguous:
Yes
Permitted: Yes
Wet Space: No
Addition: No
Conversion: No

23 Floor 3 - Bedroom

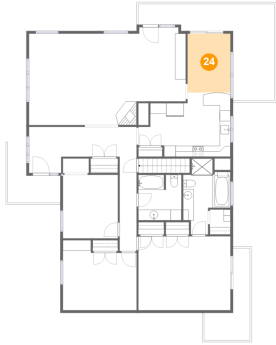


Dimensions: 13'10" x 13'1"
Area: 161 sq. ft
Counted as Living Area:
Yes

Heated: Yes
Finished: Yes
Enclosed: Yes
Contiguous:
Yes
Permitted: Yes
Wet Space: No
Addition: No
Conversion: No

6218 Saddleridge Lane, Brookwood, Cave Spring, Roanoke, Roanoke County, Virginia, United

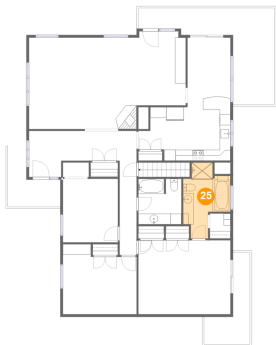
24 Floor 3 - Breakfast Nook



Dimensions: 8'0" x 11'1"
Area: 89 sq. ft
Counted as Living Area:
Yes

Heated: Yes
Finished: Yes
Enclosed: Yes
Contiguous:
Yes
Permitted: Yes
Wet Space: No
Addition: No
Conversion: No

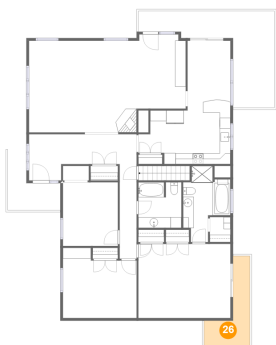
25 Floor 3 - Primary Bath



Dimensions: 8'10" x 14'3"
Area: 88 sq. ft
Counted as Living Area:
Yes

Heated: Yes
Finished: Yes
Enclosed: Yes
Contiguous:
Yes
Permitted: Yes
Wet Space: Yes
Addition: No
Conversion: No

26 Floor 3 - Balcony



Dimensions: 8'7" x 17'3"
Area: 82 sq. ft
Counted as Living Area: No

Heated: No
Finished: Yes
Enclosed: No
Contiguous: Yes
Permitted: Yes
Wet Space: No
Addition: No
Conversion: No