


1102 Oster Dr NW, Huntsville, AL, US



Property summary

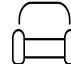
 **1** Garages

 **4** Bedrooms

 **2** Bathrooms

 **0** Half baths

 **2** Floors

 **2,205** Gross living area sqft

 **3,233** Total sqft

1102 Oster Dr NW, Huntsville, AL, US

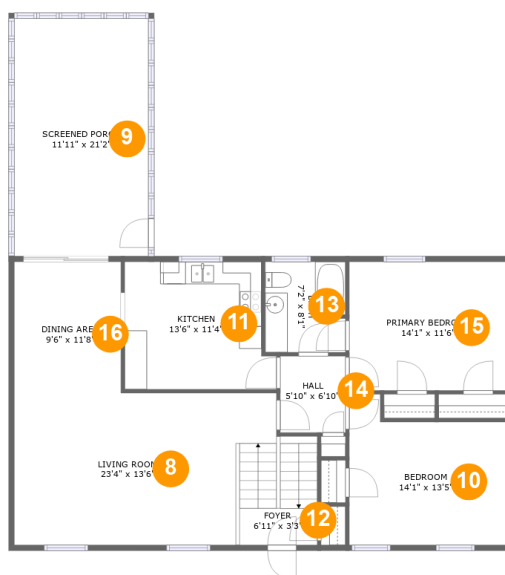


Room dimensions

Floor 1

Total sqft: 1772 Living area: 1025

#		Dimensions	sqft	Counted as living area
1	Hall	10'1" x 7'3"	117 sq. ft	Yes
2	Living Room	19'9" x 25'3"	455 sq. ft	Yes
3	Bath	6'8" x 10'3"	59 sq. ft	No
4	Bedroom	13'9" x 11'0"	152 sq. ft	Yes
5	Garage	22'1" x 25'3"	558 sq. ft	No
6	Utility	6'10" x 10'3"	70 sq. ft	No
7	Bedroom	13'9" x 13'10"	163 sq. ft	Yes

1102 Oster Dr NW, Huntsville, AL, US**Room dimensions**

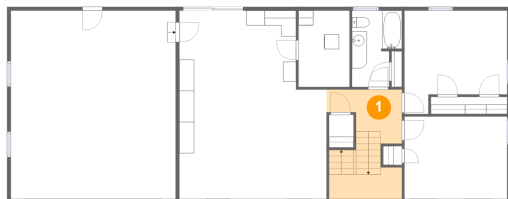
Floor 2

Total sqft: 1461 Living area: 1180

#		Dimensions	sqft	Counted as living area
8	Living Room	23'4" x 13'6"	329 sq. ft	Yes
9	Outdoor	11'11" x 21'2"	253 sq. ft	No
10	Bedroom	14'1" x 13'5"	162 sq. ft	Yes
11	Kitchen	13'6" x 11'4"	142 sq. ft	Yes
12	Entry	6'11" x 3'3"	23 sq. ft	Yes
13	Bath	7'2" x 8'1"	57 sq. ft	Yes
14	Hall	5'10" x 6'10"	40 sq. ft	Yes
15	Bedroom	14'1" x 11'6"	162 sq. ft	Yes
16	Dining Room	9'6" x 11'8"	111 sq. ft	Yes

1102 Oster Dr NW, Huntsville, AL, US

1 Floor 1 - Hall



Dimensions: 10'1" x 7'3"
Area: 117 sq. ft
Counted as living area: Yes

Heated: Yes
Finished: Yes
Enclosed: Yes
Contiguous: Yes
Permitted: Yes
Wet space: No
Addition: No
Conversion: No

2 Floor 1 - Living Room



Dimensions: 19'9" x 25'3"
Area: 455 sq. ft
Counted as living area: Yes

Heated: Yes
Finished: Yes
Enclosed: Yes
Contiguous: Yes
Permitted: Yes
Wet space: No
Addition: No
Conversion: No

1102 Oster Dr NW, Huntsville, AL, US

3 Floor 1 - Bath



Dimensions: 6'8" x 10'3"
Area: 59 sq. ft
Counted as living area: No

Heated: Yes
Finished: Yes
Enclosed: Yes
Contiguous: Yes
Permitted: Yes
Wet space: Yes
Addition: No
Conversion: No

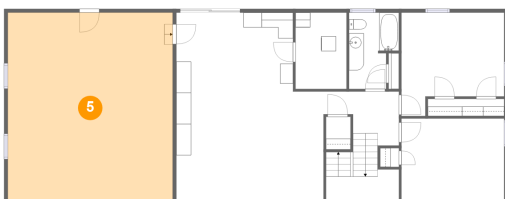
4 Floor 1 - Bedroom



Dimensions: 13'9" x 11'0"
Area: 152 sq. ft
Counted as living area: Yes

Heated: Yes
Finished: Yes
Enclosed: Yes
Contiguous: Yes
Permitted: Yes
Wet space: No
Addition: No
Conversion: No

5 Floor 1 - Garage

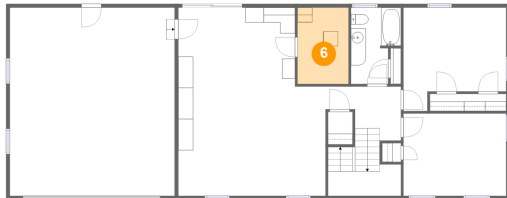


Dimensions: 22'1" x 25'3"
Area: 558 sq. ft
Counted as living area: No

Heated: No
Finished: No
Enclosed: Yes
Contiguous: Yes
Permitted: Yes
Wet space: No
Addition: No
Conversion: No

1102 Oster Dr NW, Huntsville, AL, US

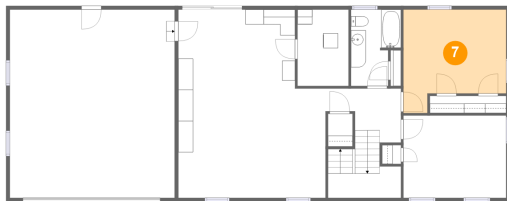
6 Floor 1 - Utility



Dimensions: 6'10" x 10'3"
Area: 70 sq. ft
Counted as living area: No

Heated: Yes
Finished: No
Enclosed: Yes
Contiguous: Yes
Permitted: Yes
Wet space: No
Addition: No
Conversion: No

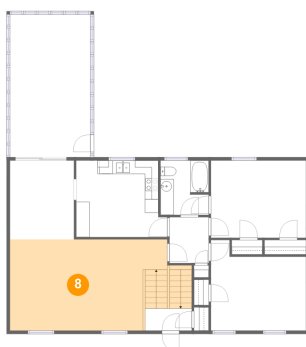
7 Floor 1 - Bedroom



Dimensions: 13'9" x 13'10"
Area: 163 sq. ft
Counted as living area: Yes

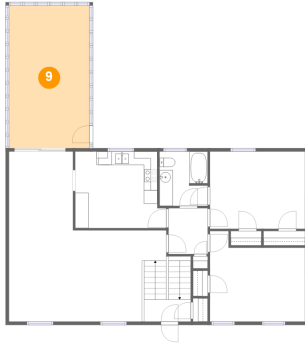
Heated: Yes
Finished: Yes
Enclosed: Yes
Contiguous: Yes
Permitted: Yes
Wet space: No
Addition: No
Conversion: No

8 Floor 2 - Living Room



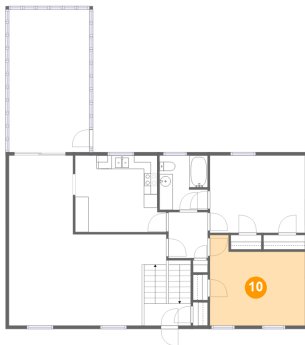
Dimensions: 23'4" x 13'6"
Area: 329 sq. ft
Counted as living area: Yes

Heated: Yes
Finished: Yes
Enclosed: Yes
Contiguous: Yes
Permitted: Yes
Wet space: No
Addition: No
Conversion: No

1102 Oster Dr NW, Huntsville, AL, US**9 Floor 2 - Outdoor**

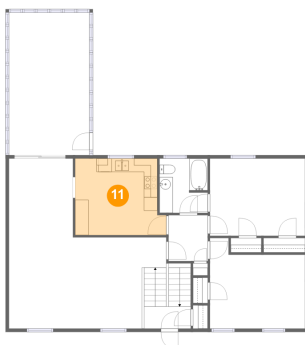
Dimensions: 11'11" x 21'2"
Area: 253 sq. ft
Counted as living area: No

Heated: No
Finished: Yes
Enclosed: No
Contiguous: Yes
Permitted: Yes
Wet space: No
Addition: No
Conversion: No

10 Floor 2 - Bedroom

Dimensions: 14'1" x 13'5"
Area: 162 sq. ft
Counted as living area: Yes

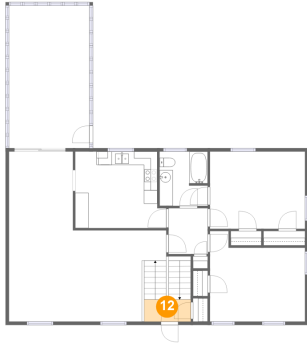
Heated: Yes
Finished: Yes
Enclosed: Yes
Contiguous: Yes
Permitted: Yes
Wet space: No
Addition: No
Conversion: No

11 Floor 2 - Kitchen

Dimensions: 13'6" x 11'4"
Area: 142 sq. ft
Counted as living area: Yes

Heated: Yes
Finished: Yes
Enclosed: Yes
Contiguous: Yes
Permitted: Yes
Wet space: No
Addition: No
Conversion: No

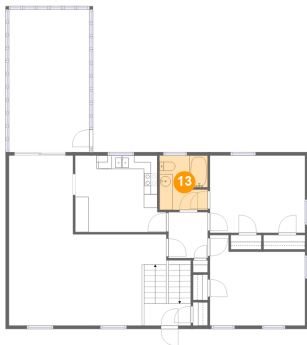
12 Floor 2 - Entry



Dimensions: 6'11" x 3'3"
Area: 23 sq. ft
Counted as living area: Yes

Heated: Yes
Finished: Yes
Enclosed: Yes
Contiguous: Yes
Permitted: Yes
Wet space: No
Addition: No
Conversion: No

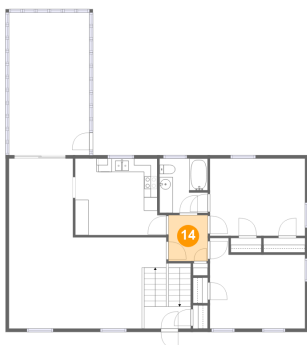
13 Floor 2 - Bath



Dimensions: 7'2" x 8'1"
Area: 57 sq. ft
Counted as living area: Yes

Heated: Yes
Finished: Yes
Enclosed: Yes
Contiguous: Yes
Permitted: Yes
Wet space: Yes
Addition: No
Conversion: No

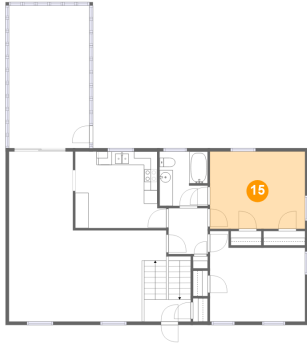
14 Floor 2 - Hall



Dimensions: 5'10" x 6'10"
Area: 40 sq. ft
Counted as living area: Yes

Heated: Yes
Finished: Yes
Enclosed: Yes
Contiguous: Yes
Permitted: Yes
Wet space: No
Addition: No
Conversion: No

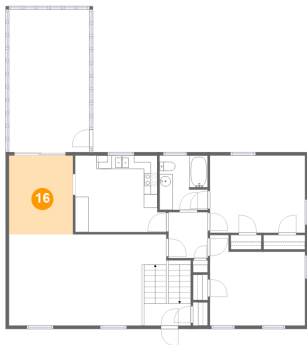
15 Floor 2 - Bedroom



Dimensions: 14'1" x 11'6"
Area: 162 sq. ft
Counted as living area: Yes

Heated: Yes
Finished: Yes
Enclosed: Yes
Contiguous: Yes
Permitted: Yes
Wet space: No
Addition: No
Conversion: No

16 Floor 2 - Dining Room



Dimensions: 9'6" x 11'8"
Area: 111 sq. ft
Counted as living area: Yes

Heated: Yes
Finished: Yes
Enclosed: Yes
Contiguous: Yes
Permitted: Yes
Wet space: No
Addition: No
Conversion: No