

Home report

1023 Henson Park Drive, Greensboro, Guilford County, North Carolina, United States, 27455



Total Area: 2381 sq. ft

Floor 1: 1010 sq. ft, Floor 2: 1371 sq. ft

Excluded: Garage 358 sq. ft, Walls: 129 sq. ft

Property summary

 **2** Floors

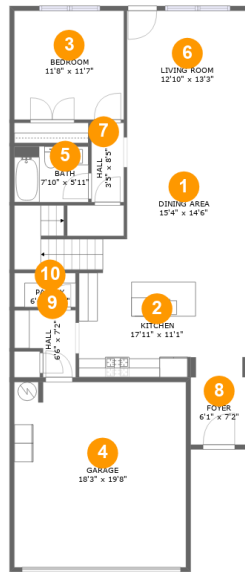
 **4** Bedrooms

 **3** Bathrooms

 **1** Garages

Home report

1023 Henson Park Drive, Greensboro, Guilford County, North Carolina, United States, 27455



Room dimensions

Floor 1

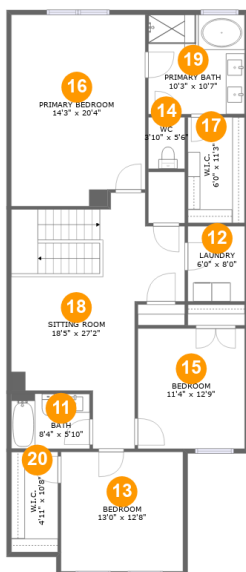
Total:1010sqft

Excluded: 358sqft

#		Max Dimensions	sqft	Included
1	Dining Area	15'4" x 14'6"	245 sq. ft	Yes
2	Kitchen	17'11" x 11'1"	198 sq. ft	Yes
3	Bedroom	11'8" x 11'7"	135 sq. ft	Yes
4	Garage	18'3" x 19'8"	358 sq. ft	No
5	Bath	7'10" x 5'11"	47 sq. ft	Yes
6	Living Room	12'10" x 13'3"	170 sq. ft	Yes
7	Hall	3'5" x 8'5"	29 sq. ft	Yes
8	Foyer	6'1" x 7'2"	43 sq. ft	Yes
9	Hall	6'6" x 7'2"	37 sq. ft	Yes
10	Pantry	6'6" x 3'8"	24 sq. ft	Yes

Home report

1023 Henson Park Drive, Greensboro, Guilford County, North Carolina, United States, 27455



Room dimensions

Floor 2

Total:1371sqft

Excluded: 0sqft

#		Max Dimensions	sqft	Included
11	Bath	8'4" x 5'10"	49 sq. ft	Yes
12	Laundry	6'0" x 8'0"	48 sq. ft	Yes
13	Bedroom	13'0" x 12'8"	164 sq. ft	Yes
14	WC	3'10" x 5'6"	21 sq. ft	Yes
15	Bedroom	11'4" x 12'9"	145 sq. ft	Yes
16	Primary Bedroom	14'3" x 20'4"	282 sq. ft	Yes
17	W.I.C.	6'0" x 11'3"	68 sq. ft	Yes
18	Sitting Room	18'5" x 27'2"	331 sq. ft	Yes
19	Primary Bath	10'3" x 10'7"	108 sq. ft	Yes
20	W.I.C.	4'11" x 10'8"	53 sq. ft	Yes

1023 Henson Park Drive, Greensboro, Guilford County, North Carolina, United States, 27455

1 Floor 1 - Dining Area



Max Dimensions: 15'4" x 14'6"
Calculated Area: 245 sq. ft
Included: Yes

Heated: Yes
Finished: Yes
Enclosed: Yes
Contiguous: Yes
Permitted: Yes
Wet space: No
Addition: No
Conversion: No

2 Floor 1 - Kitchen



Max Dimensions: 17'11" x 11'1"
Calculated Area: 198 sq. ft
Included: Yes

Heated: Yes
Finished: Yes
Enclosed: Yes
Contiguous: Yes
Permitted: Yes
Wet space: No
Addition: No
Conversion: No

1023 Henson Park Drive, Greensboro, Guilford County, North Carolina, United States, 27455

3 Floor 1 - Bedroom



Max Dimensions: 11'8" x 11'7"
Calculated Area: 135 sq. ft
Included: Yes

Heated: Yes
Finished: Yes
Enclosed: Yes
Contiguous: Yes
Permitted: Yes
Wet space: No
Addition: No
Conversion: No

4 Floor 1 - Garage



Max Dimensions: 18'3" x 19'8"
Calculated Area: 358 sq. ft
Included: No

Heated: No
Finished: No
Enclosed: Yes
Contiguous: Yes
Permitted: Yes
Wet space: No
Addition: No
Conversion: No

5 Floor 1 - Bath



Max Dimensions: 7'10" x 5'11"
Calculated Area: 47 sq. ft
Included: Yes

Heated: Yes
Finished: Yes
Enclosed: Yes
Contiguous: Yes
Permitted: Yes
Wet space: Yes
Addition: No
Conversion: No

1023 Henson Park Drive, Greensboro, Guilford County, North Carolina, United States, 27455

6 Floor 1 - Living Room



Max Dimensions: 12'10" x 13'3"
Calculated Area: 170 sq. ft
Included: Yes

Heated: Yes
Finished: Yes
Enclosed: Yes
Contiguous: Yes
Permitted: Yes
Wet space: No
Addition: No
Conversion: No

7 Floor 1 - Hall



Max Dimensions: 3'5" x 8'5"
Calculated Area: 29 sq. ft
Included: Yes

Heated: Yes
Finished: Yes
Enclosed: Yes
Contiguous: Yes
Permitted: Yes
Wet space: No
Addition: No
Conversion: No

8 Floor 1 - Foyer



Max Dimensions: 6'1" x 7'2"
Calculated Area: 43 sq. ft
Included: Yes

Heated: Yes
Finished: Yes
Enclosed: Yes
Contiguous: Yes
Permitted: Yes
Wet space: No
Addition: No
Conversion: No

1023 Henson Park Drive, Greensboro, Guilford County, North Carolina, United States, 27455

9 Floor 1 - Hall



Max Dimensions: 6'6" x 7'2"
Calculated Area: 37 sq. ft
Included: Yes

Heated: Yes
Finished: Yes
Enclosed: Yes
Contiguous: Yes
Permitted: Yes
Wet space: No
Addition: No
Conversion: No

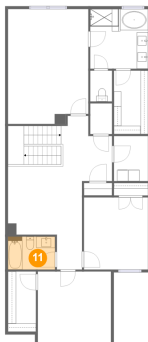
10 Floor 1 - Pantry



Max Dimensions: 6'6" x 3'8"
Calculated Area: 24 sq. ft
Included: Yes

Heated: Yes
Finished: Yes
Enclosed: Yes
Contiguous: Yes
Permitted: Yes
Wet space: No
Addition: No
Conversion: No

11 Floor 2 - Bath



Max Dimensions: 8'4" x 5'10"
Calculated Area: 49 sq. ft
Included: Yes

Heated: Yes
Finished: Yes
Enclosed: Yes
Contiguous: Yes
Permitted: Yes
Wet space: Yes
Addition: No
Conversion: No

1023 Henson Park Drive, Greensboro, Guilford County, North Carolina, United States, 27455

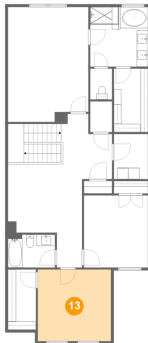
12 Floor 2 - Laundry



Max Dimensions: 6'0" x 8'0"
Calculated Area: 48 sq. ft
Included: Yes

Heated: Yes
Finished: Yes
Enclosed: Yes
Contiguous: Yes
Permitted: Yes
Wet space: No
Addition: No
Conversion: No

13 Floor 2 - Bedroom



Max Dimensions: 13'0" x 12'8"
Calculated Area: 164 sq. ft
Included: Yes

Heated: Yes
Finished: Yes
Enclosed: Yes
Contiguous: Yes
Permitted: Yes
Wet space: No
Addition: No
Conversion: No

14 Floor 2 - WC

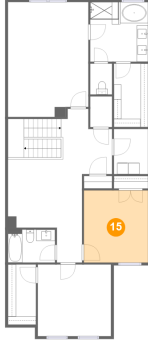


Max Dimensions: 3'10" x 5'6"
Calculated Area: 21 sq. ft
Included: Yes

Heated: Yes
Finished: Yes
Enclosed: Yes
Contiguous: Yes
Permitted: Yes
Wet space: Yes
Addition: No
Conversion: No

1023 Henson Park Drive, Greensboro, Guilford County, North Carolina, United States, 27455

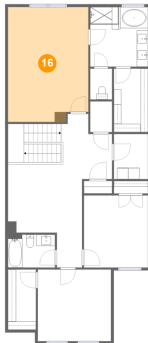
15 Floor 2 - Bedroom



Max Dimensions: 11'4" x 12'9"
Calculated Area: 145 sq. ft
Included: Yes

Heated: Yes
Finished: Yes
Enclosed: Yes
Contiguous: Yes
Permitted: Yes
Wet space: No
Addition: No
Conversion: No

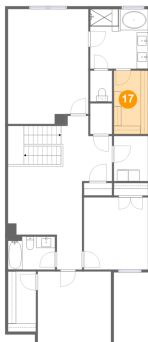
16 Floor 2 - Primary Bedroom



Max Dimensions: 14'3" x 20'4"
Calculated Area: 282 sq. ft
Included: Yes

Heated: Yes
Finished: Yes
Enclosed: Yes
Contiguous: Yes
Permitted: Yes
Wet space: No
Addition: No
Conversion: No

17 Floor 2 - W.I.C.



Max Dimensions: 6'0" x 11'3"
Calculated Area: 68 sq. ft
Included: Yes

Heated: Yes
Finished: Yes
Enclosed: Yes
Contiguous: Yes
Permitted: Yes
Wet space: No
Addition: No
Conversion: No

1023 Henson Park Drive, Greensboro, Guilford County, North Carolina, United States, 27455

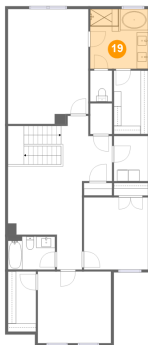
18 Floor 2 - Sitting Room



Max Dimensions: 18'5" x 27'2"
Calculated Area: 331 sq. ft
Included: Yes

Heated: Yes
Finished: Yes
Enclosed: Yes
Contiguous: Yes
Permitted: Yes
Wet space: No
Addition: No
Conversion: No

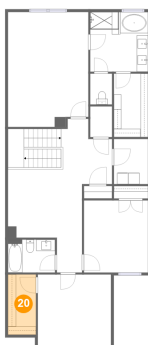
19 Floor 2 - Primary Bath



Max Dimensions: 10'3" x 10'7"
Calculated Area: 108 sq. ft
Included: Yes

Heated: Yes
Finished: Yes
Enclosed: Yes
Contiguous: Yes
Permitted: Yes
Wet space: Yes
Addition: No
Conversion: No

20 Floor 2 - W.I.C.



Max Dimensions: 4'11" x 10'8"
Calculated Area: 53 sq. ft
Included: Yes

Heated: Yes
Finished: Yes
Enclosed: Yes
Contiguous: Yes
Permitted: Yes
Wet space: No
Addition: No
Conversion: No