

Basement
26'8" x 16'8"

Wet Bar
8'8" x 6'10"

W.i.c.
7'8" x 11'4"

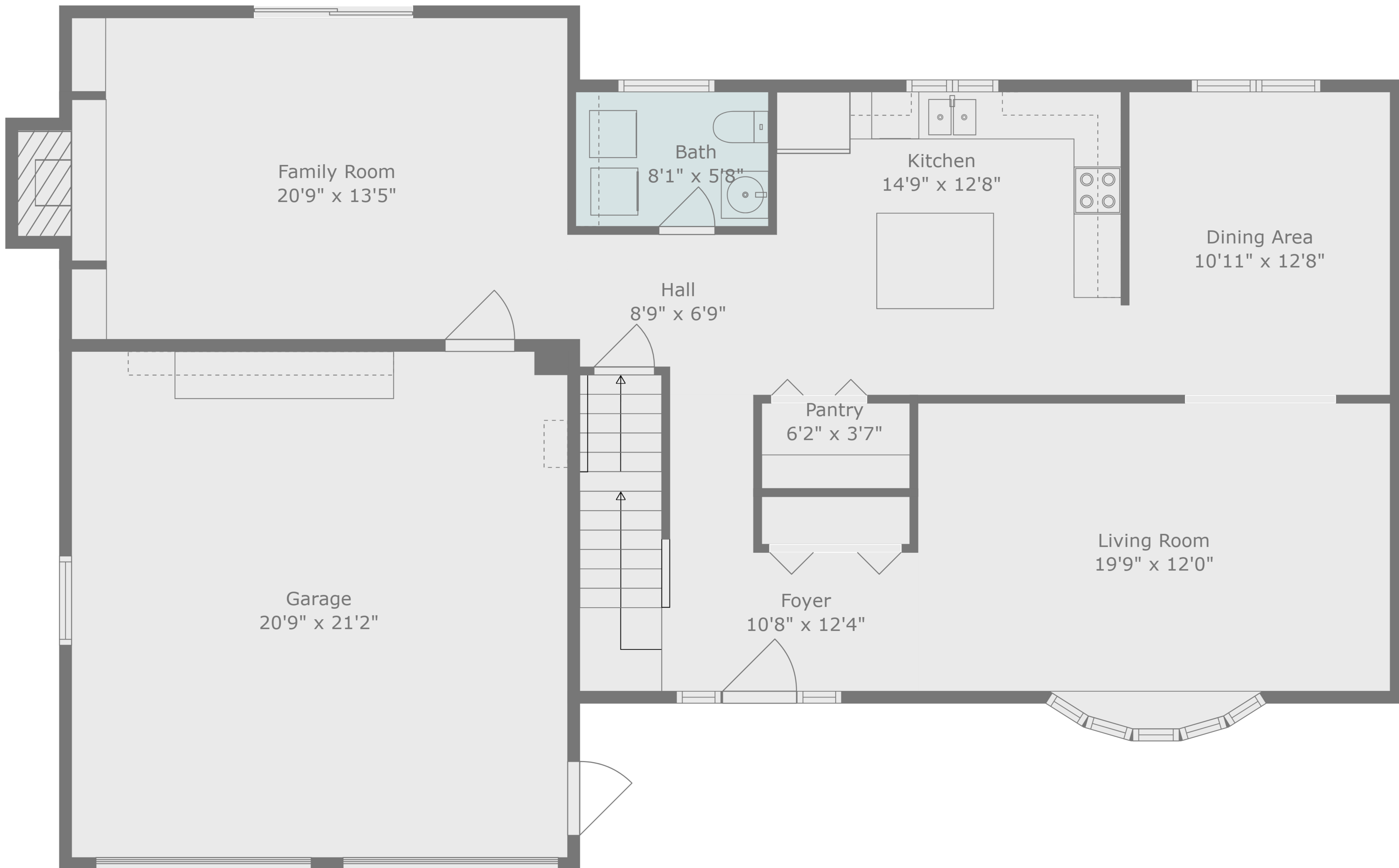
Recreation Room
32'7" x 25'1"

TOTAL: 2820 sq. ft

BELOW GROUND: 756 sq. ft, FLOOR 2: 1146 sq. ft, FLOOR 3: 918 sq. ft
 EXCLUDED AREAS: BASEMENT: 355 sq. ft, GARAGE: 439 sq. ft, FIREPLACE: 12 sq. ft,
 BALCONY: 108 sq. ft

Measurements Are Deemed Highly Reliable, But Not Guaranteed.



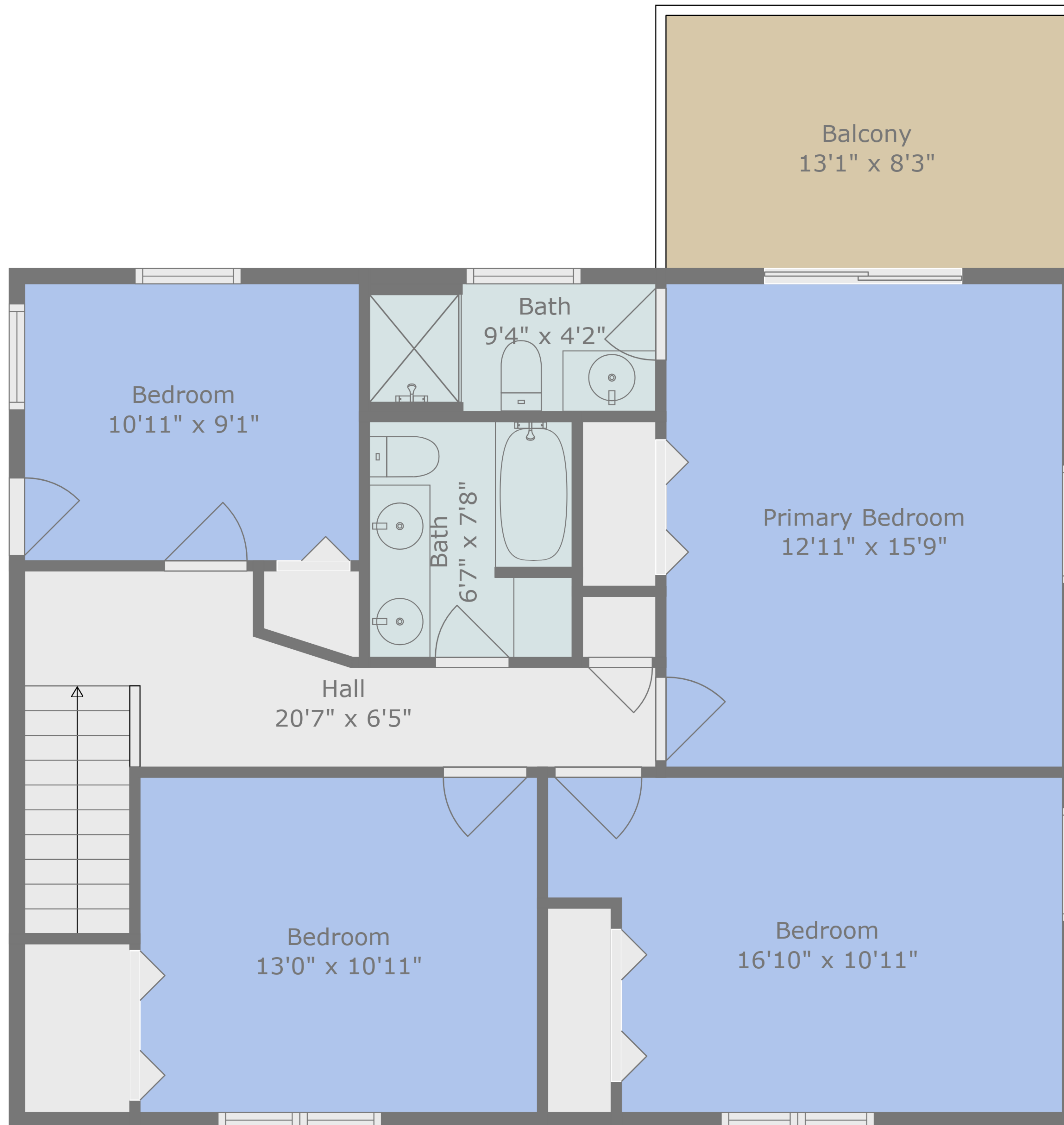


TOTAL: 2820 sq. ft

BELOW GROUND: 756 sq. ft, FLOOR 2: 1146 sq. ft, FLOOR 3: 918 sq. ft
 EXCLUDED AREAS: BASEMENT: 355 sq. ft, GARAGE: 439 sq. ft, FIREPLACE: 12 sq. ft,
 BALCONY: 108 sq. ft

Measurements Are Deemed Highly Reliable, But Not Guaranteed.





TOTAL: 2820 sq. ft

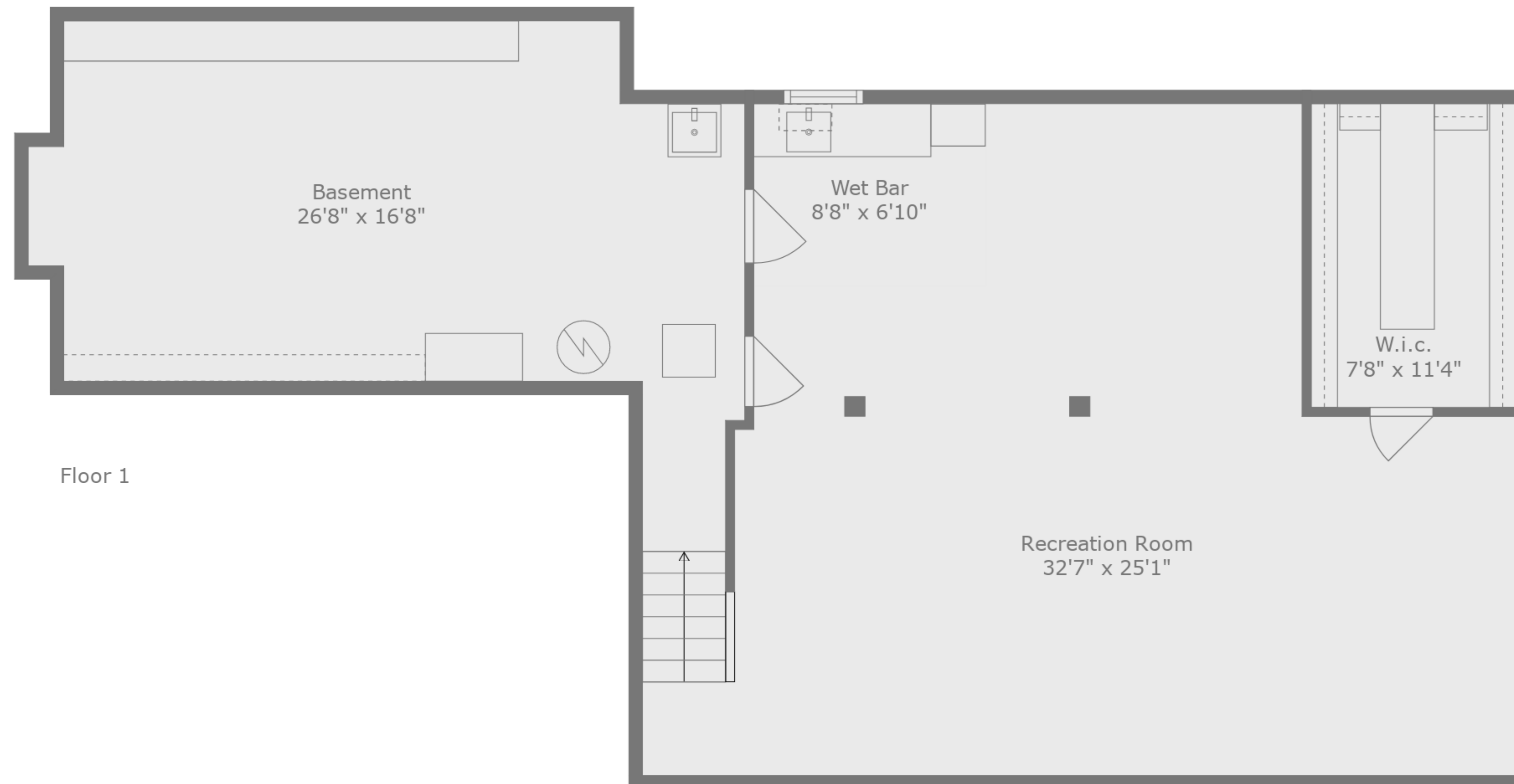
BELOW GROUND: 756 sq. ft, FLOOR 2: 1146 sq. ft, FLOOR 3: 918 sq. ft
 EXCLUDED AREAS: BASEMENT: 355 sq. ft, GARAGE: 439 sq. ft, FIREPLACE: 12 sq. ft,
 BALCONY: 108 sq. ft

Measurements Are Deemed Highly Reliable, But Not Guaranteed.

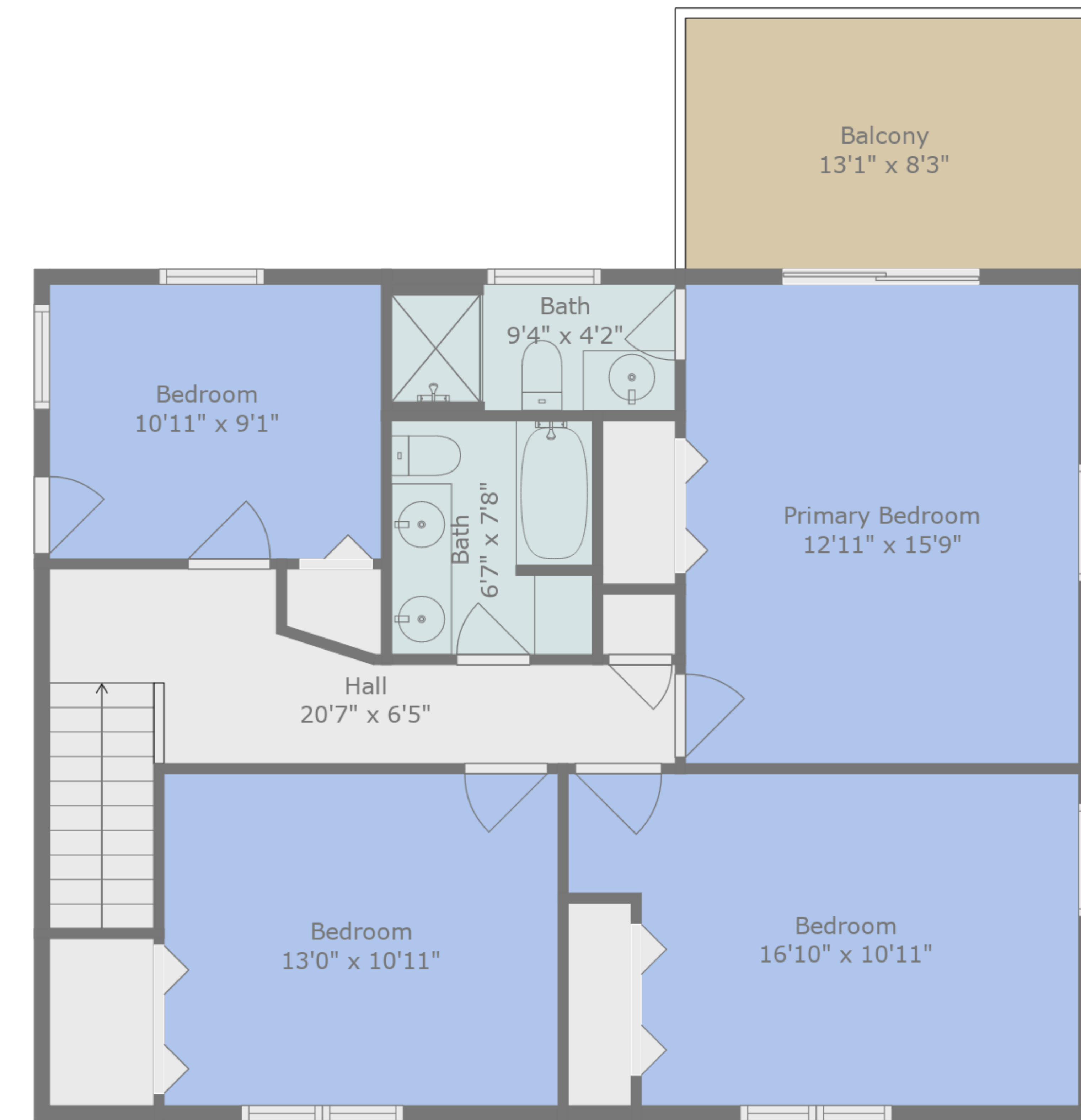




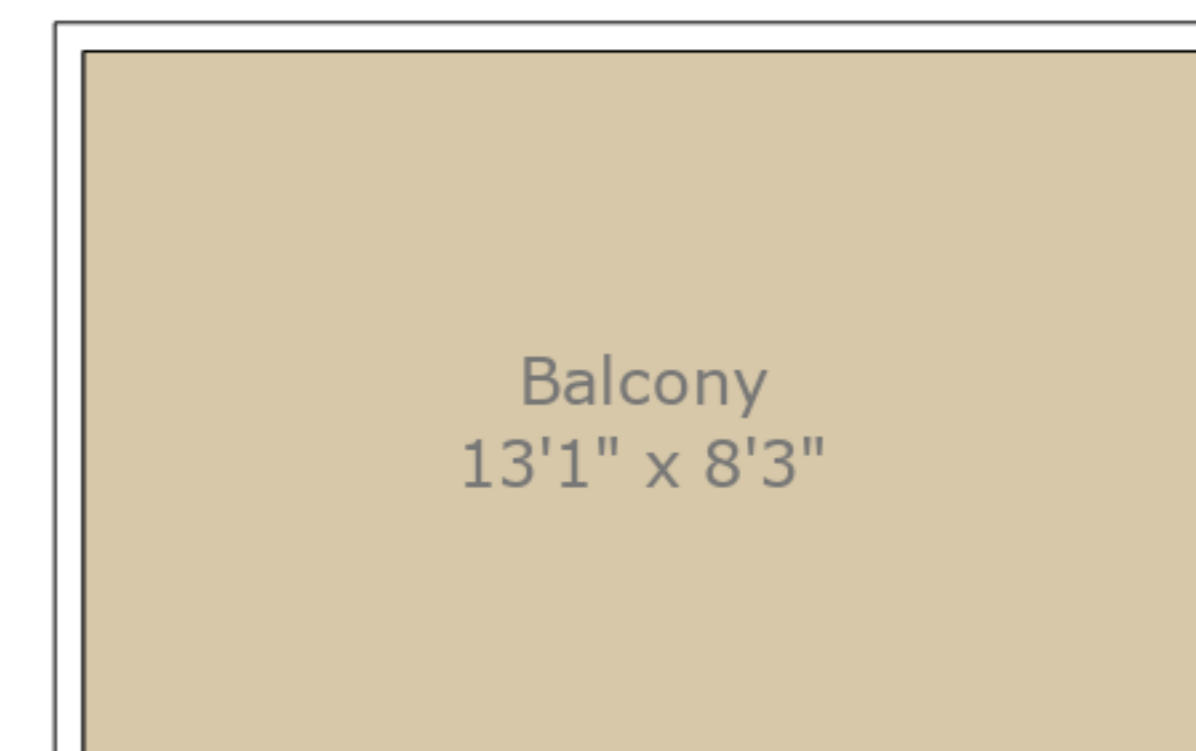
Floor 2



Floor 1



Floor 3



TOTAL: 2820 sq. ft

BELOW GROUND: 756 sq. ft, FLOOR 2: 1146 sq. ft, FLOOR 3: 918 sq. ft
 EXCLUDED AREAS: BASEMENT: 355 sq. ft, GARAGE: 439 sq. ft, FIREPLACE: 12 sq. ft,
 BALCONY: 108 sq. ft

Measurements Are Deemed Highly Reliable, But Not Guaranteed.

