

Basement  
26' x 24' 557 sq. ft

**TOTAL: 1205 sq. ft**

BELOW GROUND: 0 sq. ft, FLOOR 2: 992 sq. ft, FLOOR 3: 213 sq. ft  
EXCLUDED AREAS: BASEMENT: 566 sq. ft, STORAGE: 51 sq. ft, GARAGE: 540 sq. ft,  
DECK: 449 sq. ft, LOW CEILING: 104 sq. ft  
WALLS: 195 sq. ft

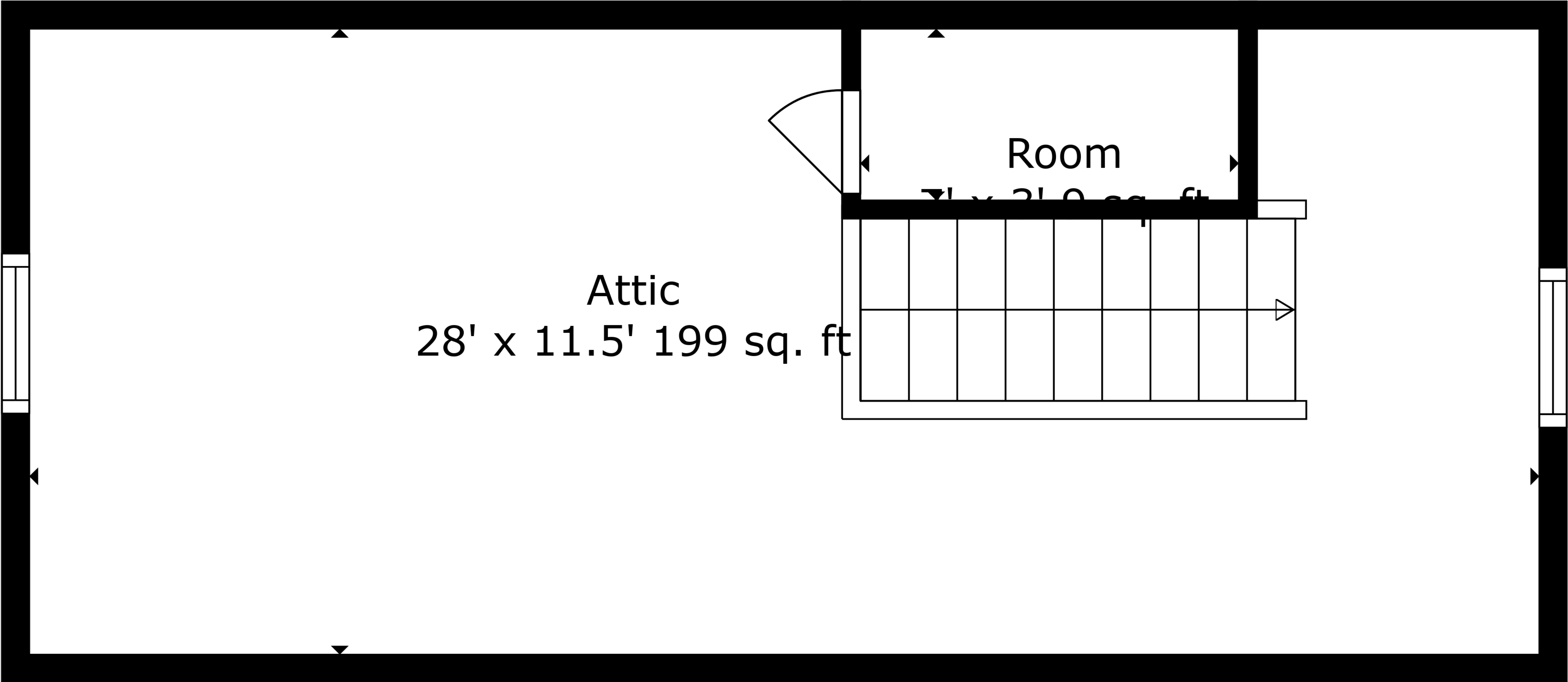




**TOTAL: 1205 sq. ft**

BELOW GROUND: 0 sq. ft, FLOOR 2: 992 sq. ft, FLOOR 3: 213 sq. ft  
 EXCLUDED AREAS: BASEMENT: 566 sq. ft, STORAGE: 51 sq. ft, GARAGE: 540 sq. ft,  
 DECK: 449 sq. ft, LOW CEILING: 104 sq. ft  
 WALLS: 195 sq. ft

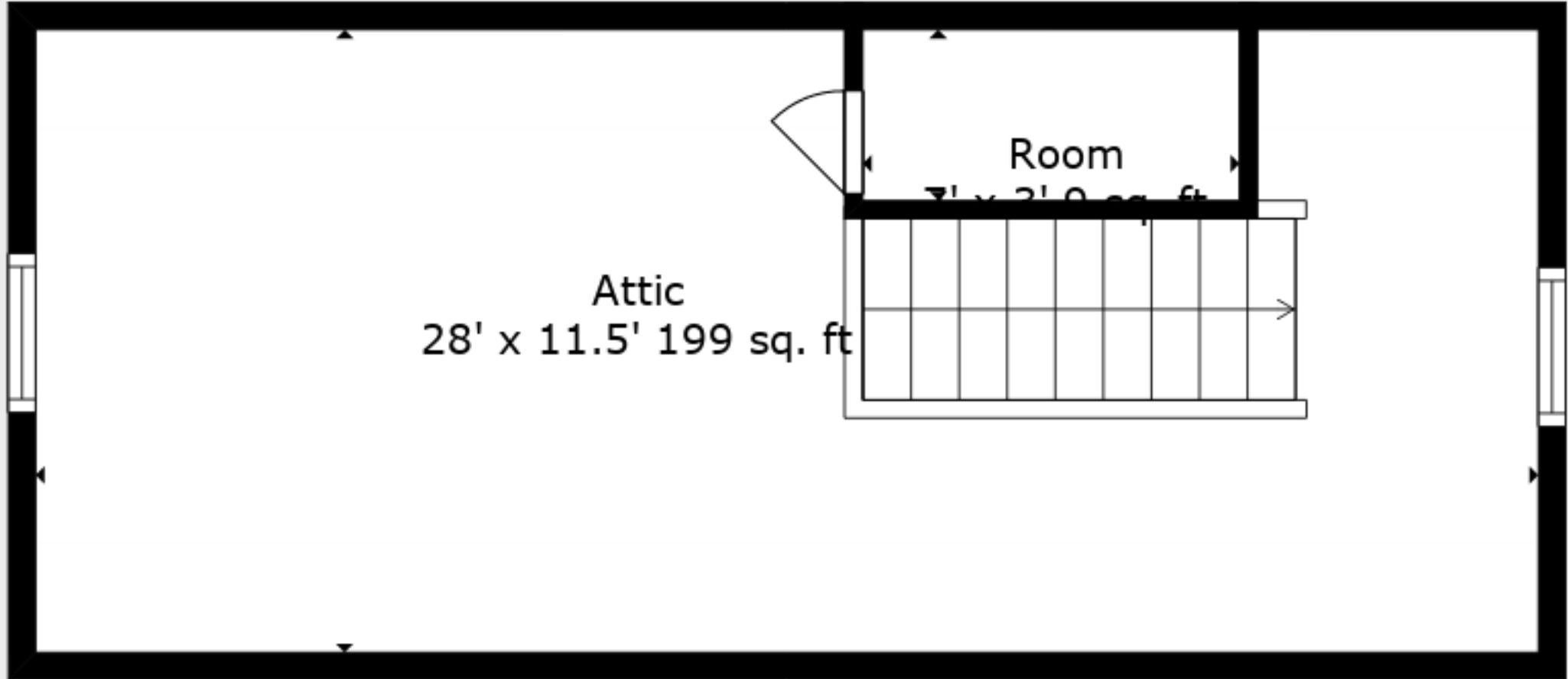




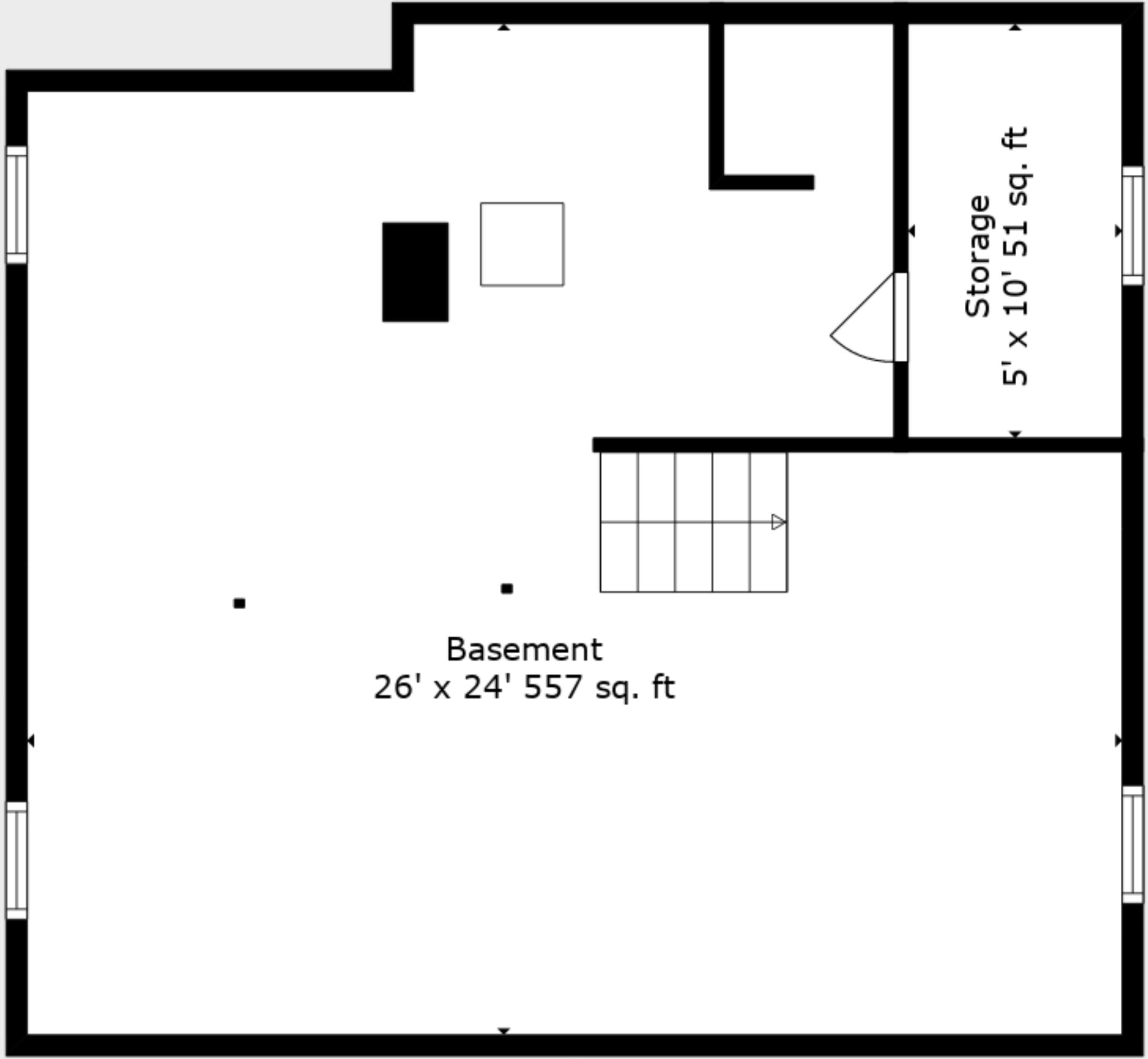




Floor 2



Floor 3



Floor 1

**TOTAL: 1205 sq. ft**

BELOW GROUND: 0 sq. ft, FLOOR 2: 992 sq. ft, FLOOR 3: 213 sq. ft  
EXCLUDED AREAS: BASEMENT: 566 sq. ft, STORAGE: 51 sq. ft, GARAGE: 540 sq. ft,  
DECK: 449 sq. ft, LOW CEILING: 104 sq. ft  
WALLS: 195 sq. ft

