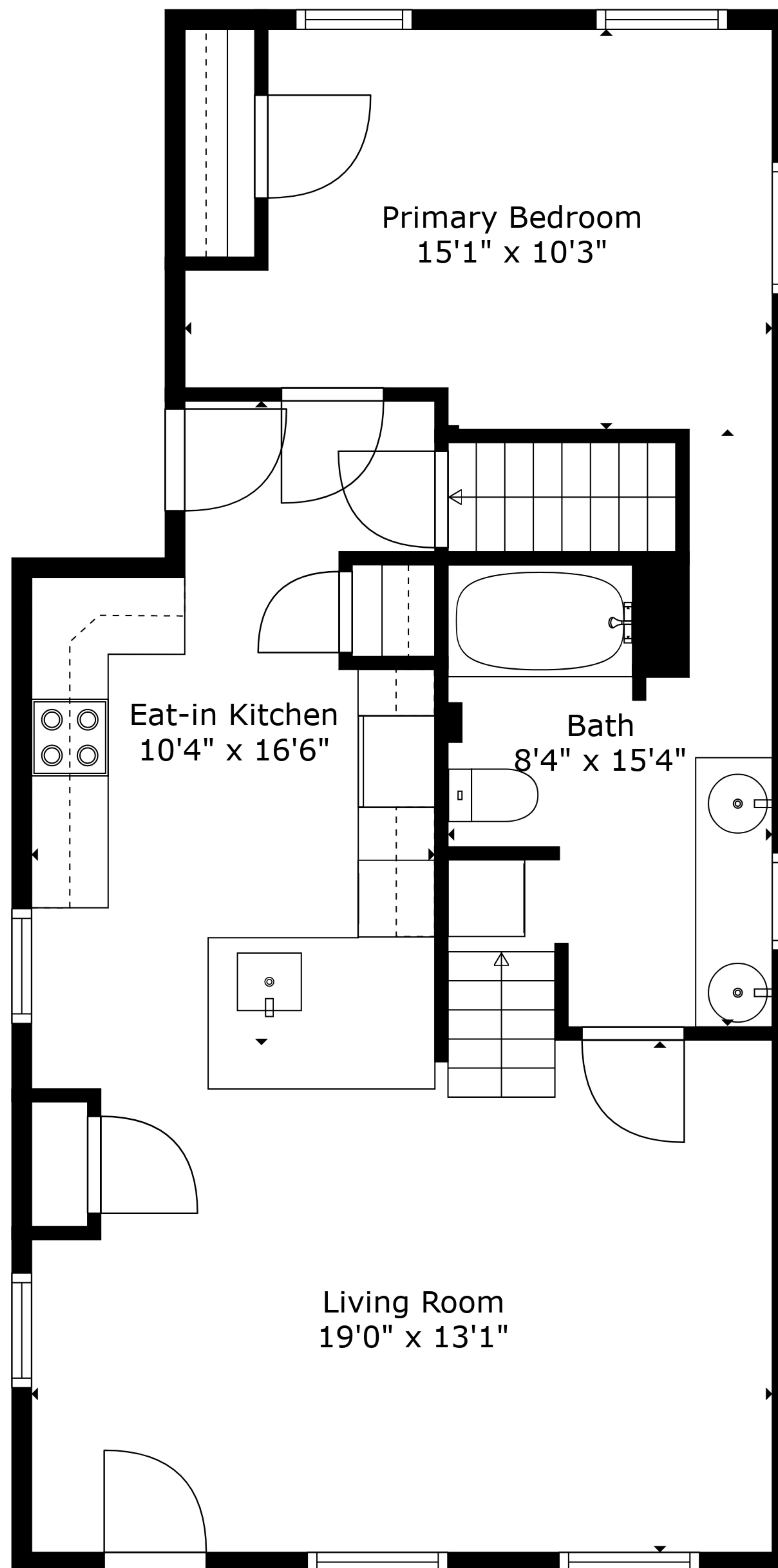


Basement  
16'7" x 36'9"

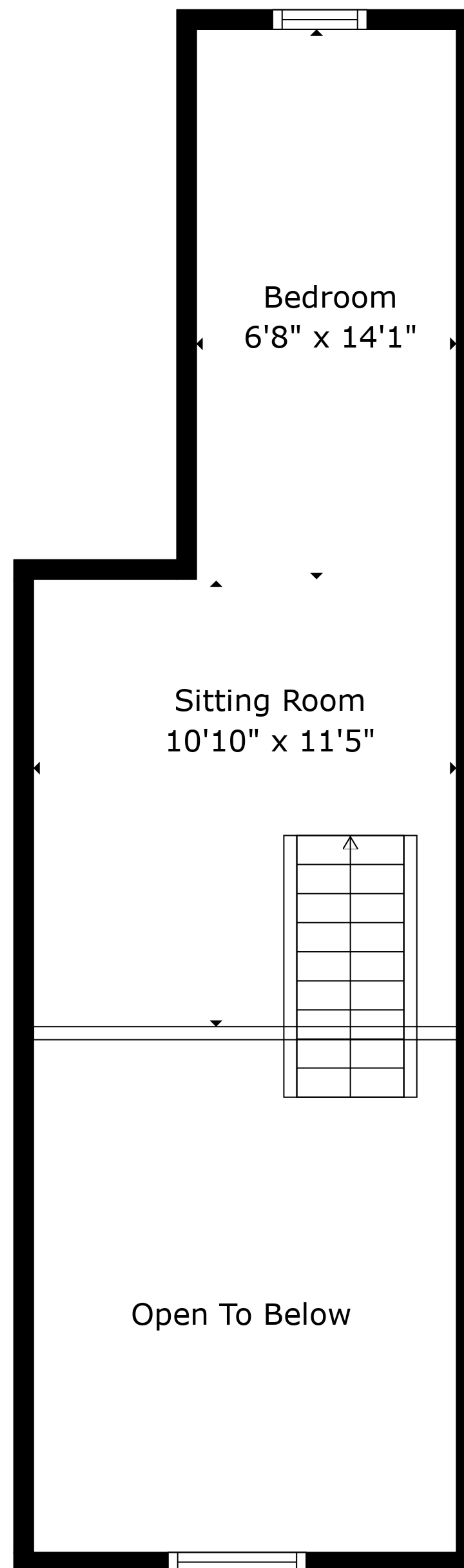
**TOTAL: 812 sq. ft**

BELOW GROUND: 0 sq. ft, FLOOR 2: 690 sq. ft, FLOOR 3: 122 sq. ft  
EXCLUDED AREAS: BASEMENT: 560 sq. ft, OPEN TO BELOW: 138 sq. ft, LOW CEILING: 106 sq. ft



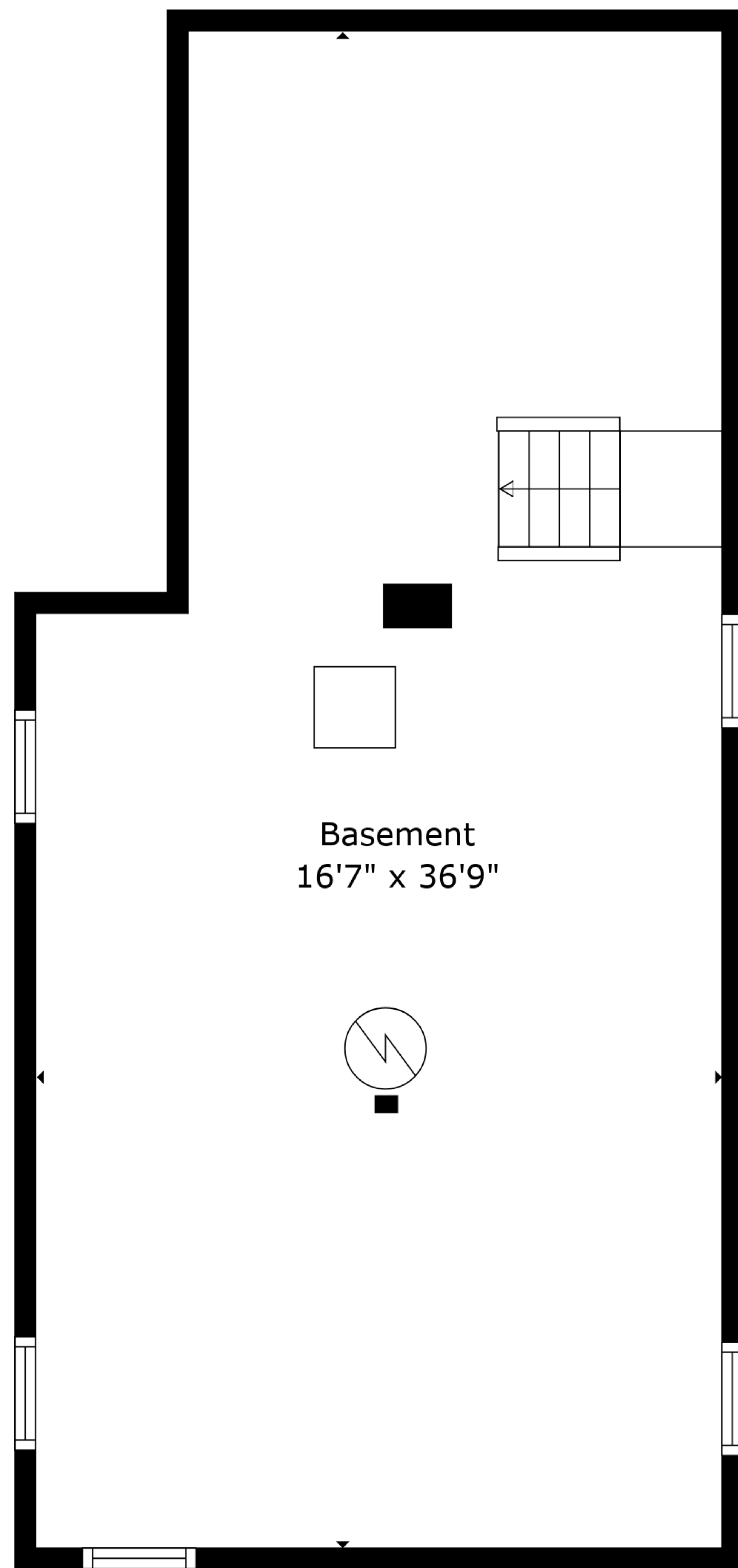
**TOTAL: 812 sq. ft**

BELOW GROUND: 0 sq. ft, FLOOR 2: 690 sq. ft, FLOOR 3: 122 sq. ft  
EXCLUDED AREAS: BASEMENT: 560 sq. ft, OPEN TO BELOW: 138 sq. ft, LOW CEILING: 106 sq. ft

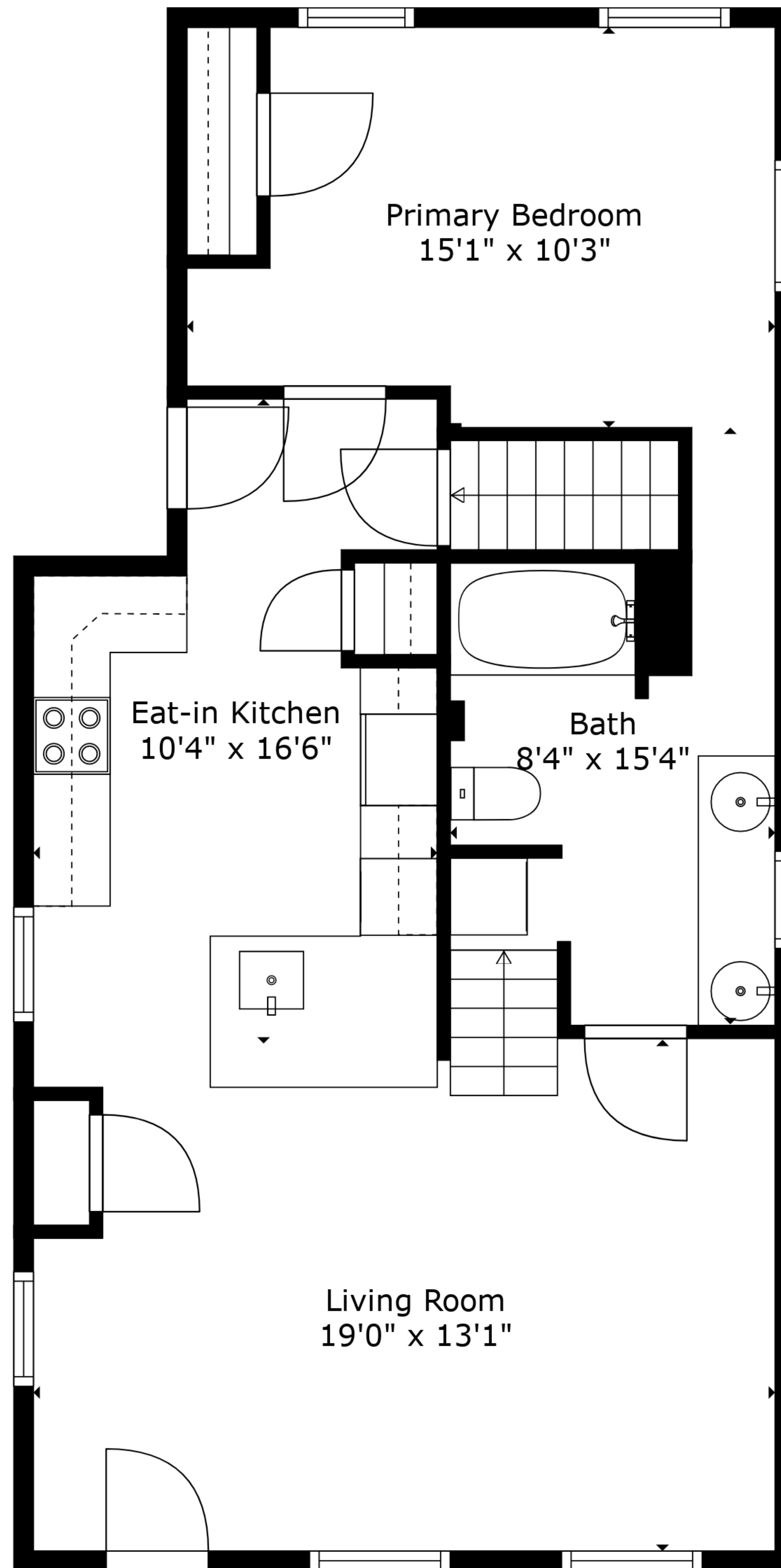


**TOTAL: 812 sq. ft**

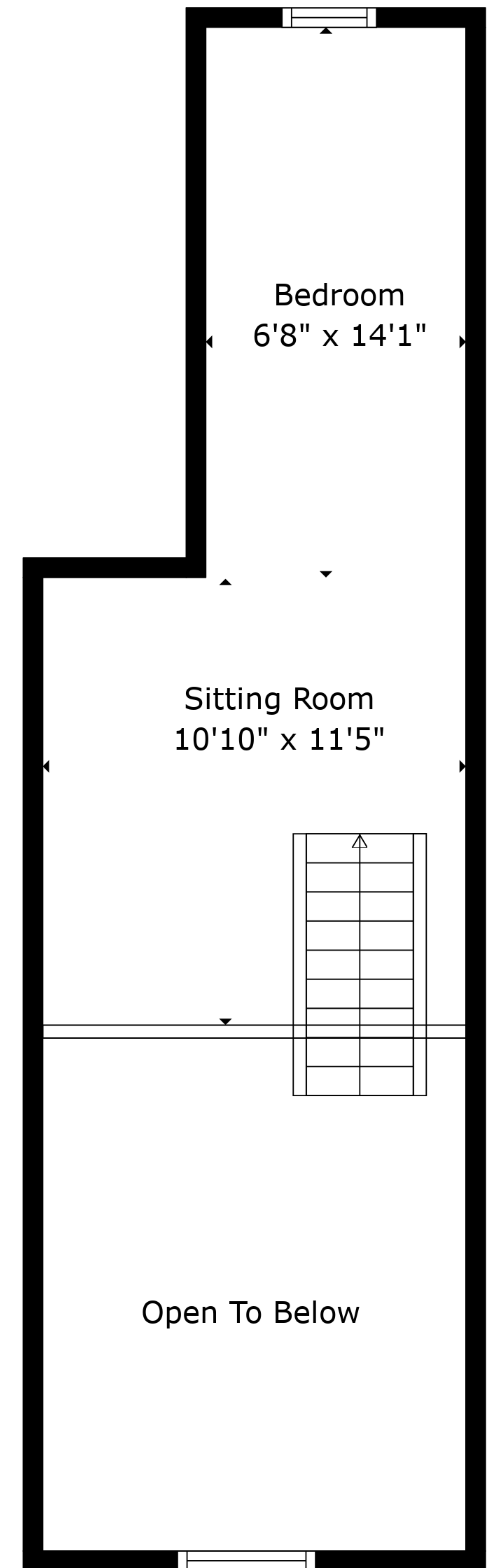
BELOW GROUND: 0 sq. ft, FLOOR 2: 690 sq. ft, FLOOR 3: 122 sq. ft  
EXCLUDED AREAS: BASEMENT: 560 sq. ft, OPEN TO BELOW: 138 sq. ft, LOW CEILING: 106 sq. ft



Floor 1



Floor 2



Floor 3

**TOTAL: 812 sq. ft**  
 BELOW GROUND: 0 sq. ft, FLOOR 2: 690 sq. ft, FLOOR 3: 122 sq. ft  
 EXCLUDED AREAS: BASEMENT: 560 sq. ft, OPEN TO BELOW: 138 sq. ft, LOW CEILING: 106 sq. ft