

BEDROOM
12'6" x 12'3"

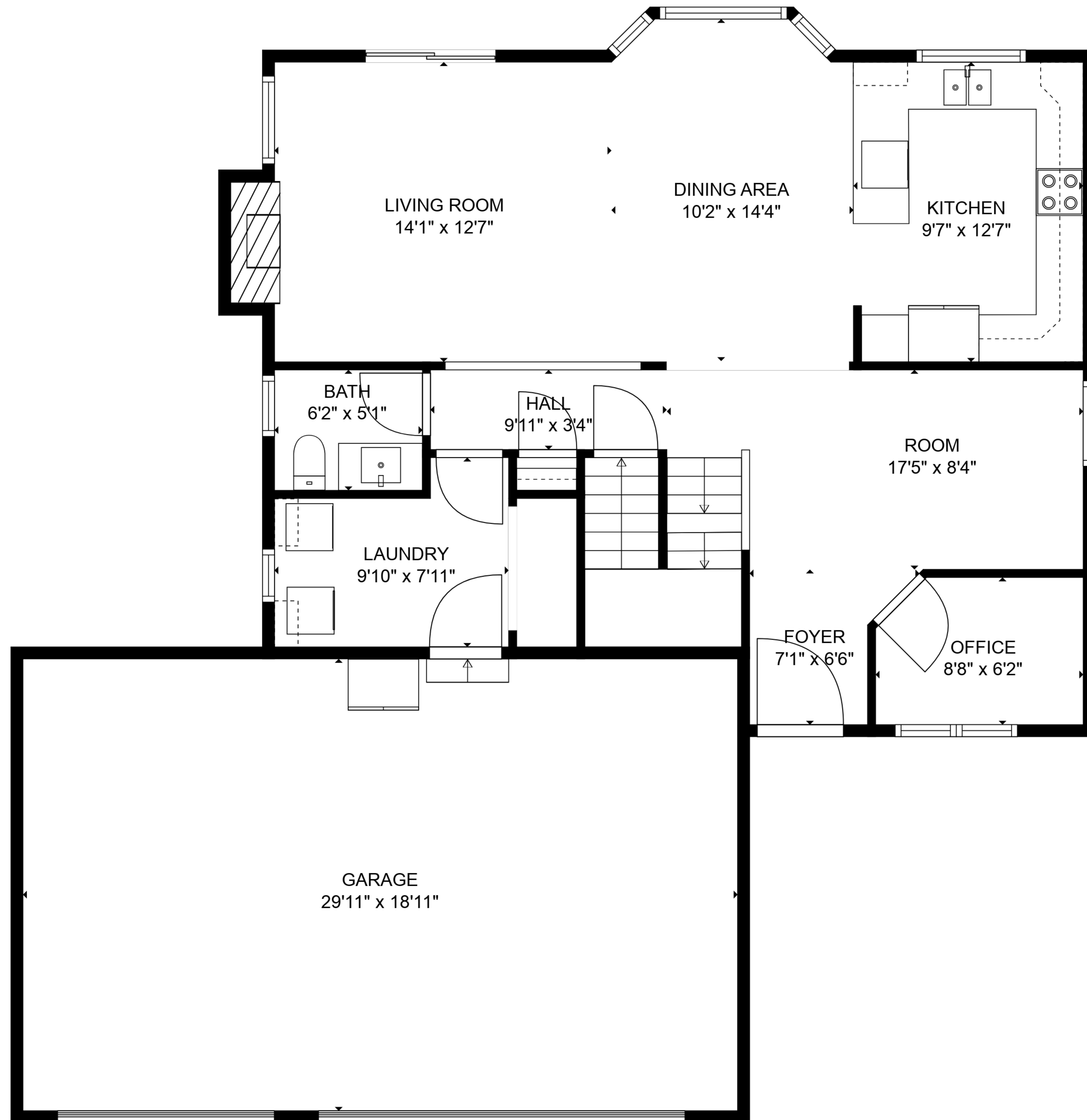
RECREATION ROOM
25'5" x 26'7"

ELECTRICAL ROOM
12'8" x 9'5"

TOTAL: 2542 sq. ft

BELOW GROUND: 761 sq. ft, FLOOR 2: 892 sq. ft, FLOOR 3: 889 sq. ft
EXCLUDED AREAS: ELECTRICAL ROOM: 111 sq. ft, GARAGE: 566 sq. ft, FIREPLACE: 11 sq. ft

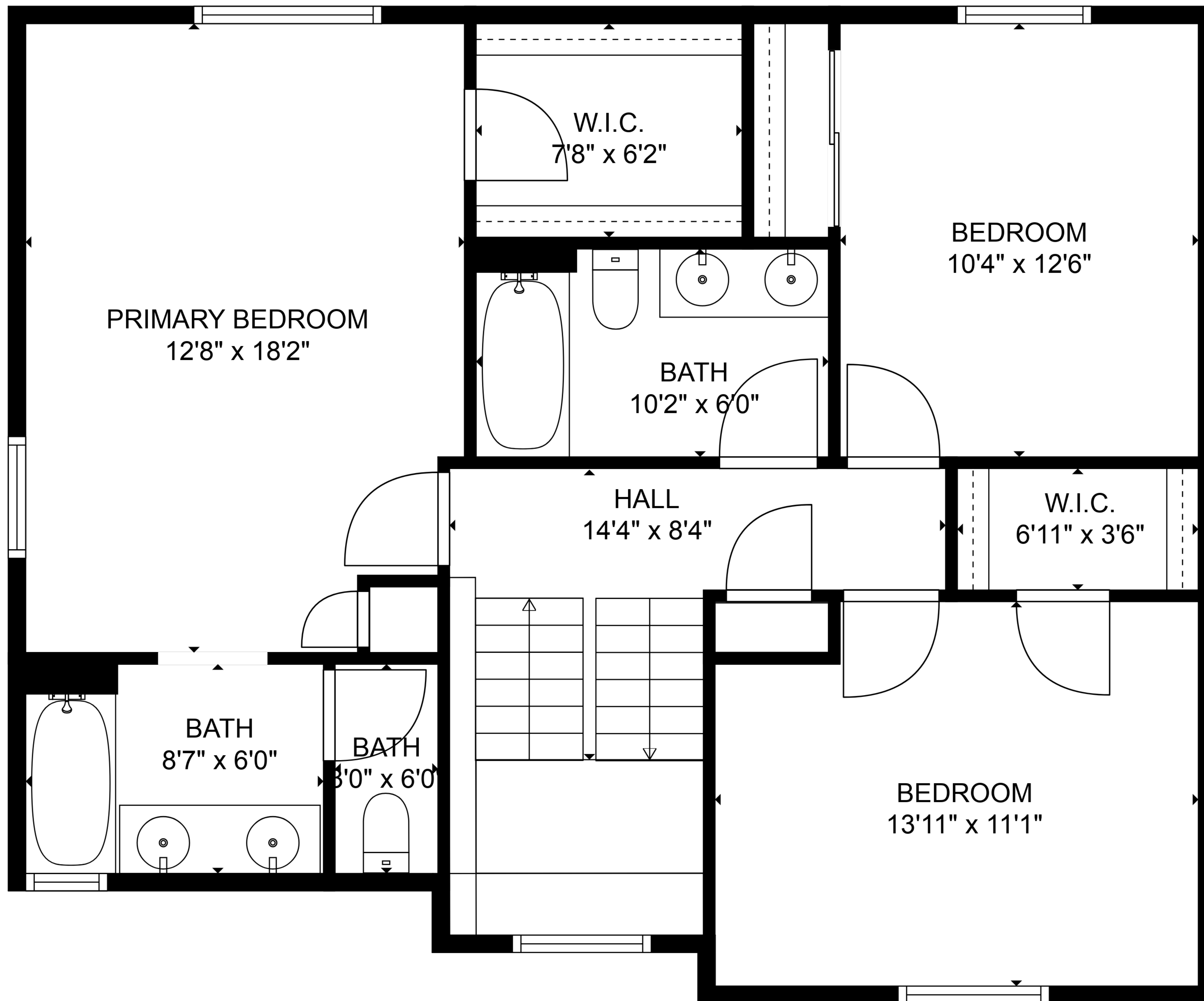
SIZES AND DIMENSIONS ARE APPROXIMATE, ACTUAL MAY VARY.



TOTAL: 2542 sq. ft

BELOW GROUND: 761 sq. ft, FLOOR 2: 892 sq. ft, FLOOR 3: 889 sq. ft
 EXCLUDED AREAS: ELECTRICAL ROOM: 111 sq. ft, GARAGE: 566 sq. ft, FIREPLACE: 11 sq. ft

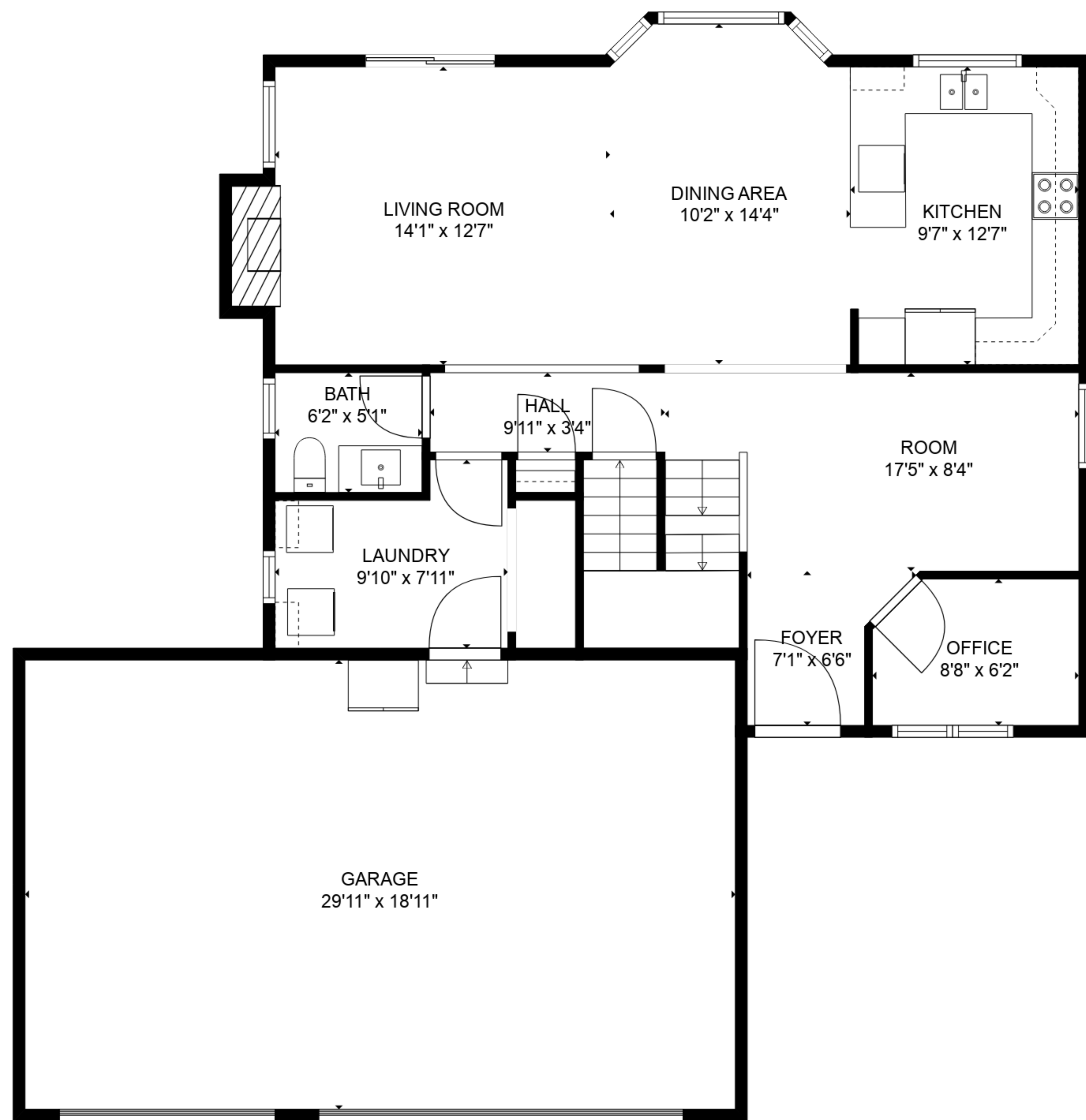
SIZES AND DIMENSIONS ARE APPROXIMATE, ACTUAL MAY VARY.



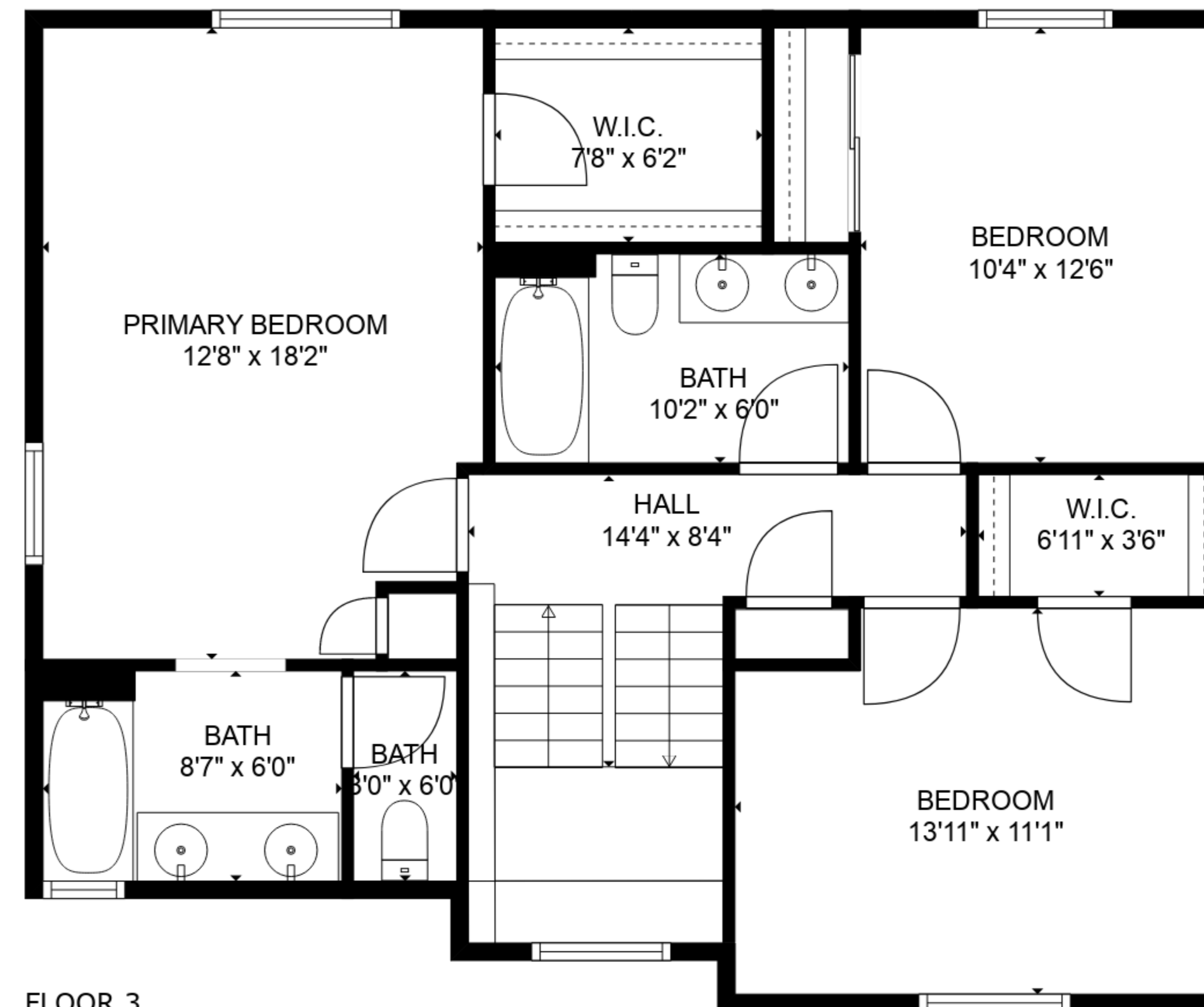
TOTAL: 2542 sq. ft

BELOW GROUND: 761 sq. ft, FLOOR 2: 892 sq. ft, FLOOR 3: 889 sq. ft
 EXCLUDED AREAS: ELECTRICAL ROOM: 111 sq. ft, GARAGE: 566 sq. ft, FIREPLACE: 11 sq. ft

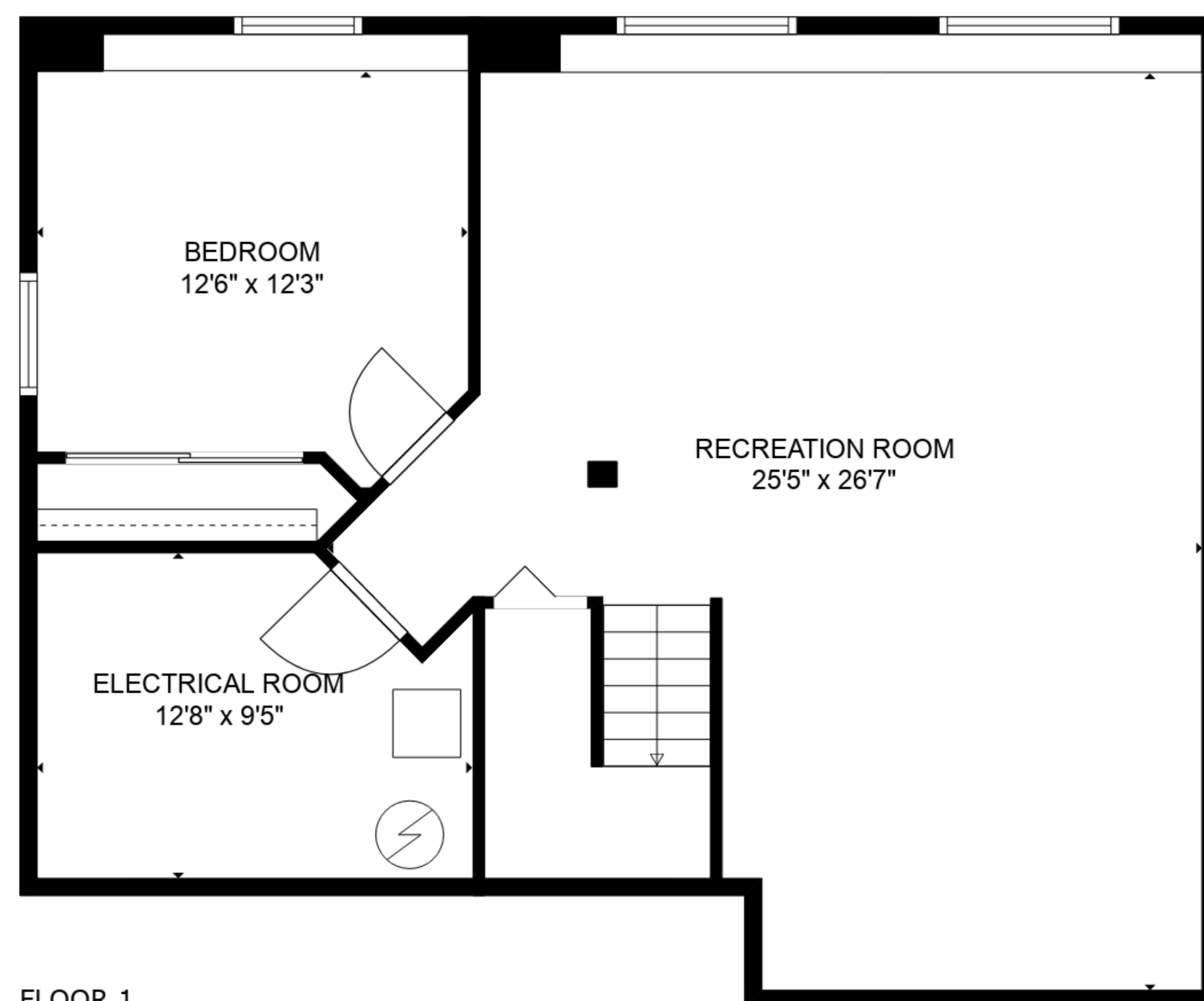
SIZES AND DIMENSIONS ARE APPROXIMATE, ACTUAL MAY VARY.



FLOOR 2



FLOOR 3



FLOOR 1

TOTAL: 2542 sq. ft

BELOW GROUND: 761 sq. ft, FLOOR 2: 892 sq. ft, FLOOR 3: 889 sq. ft

EXCLUDED AREAS: ELECTRICAL ROOM: 111 sq. ft, GARAGE: 566 sq. ft, FIREPLACE: 11 sq. ft

SIZES AND DIMENSIONS ARE APPROXIMATE, ACTUAL MAY VARY.