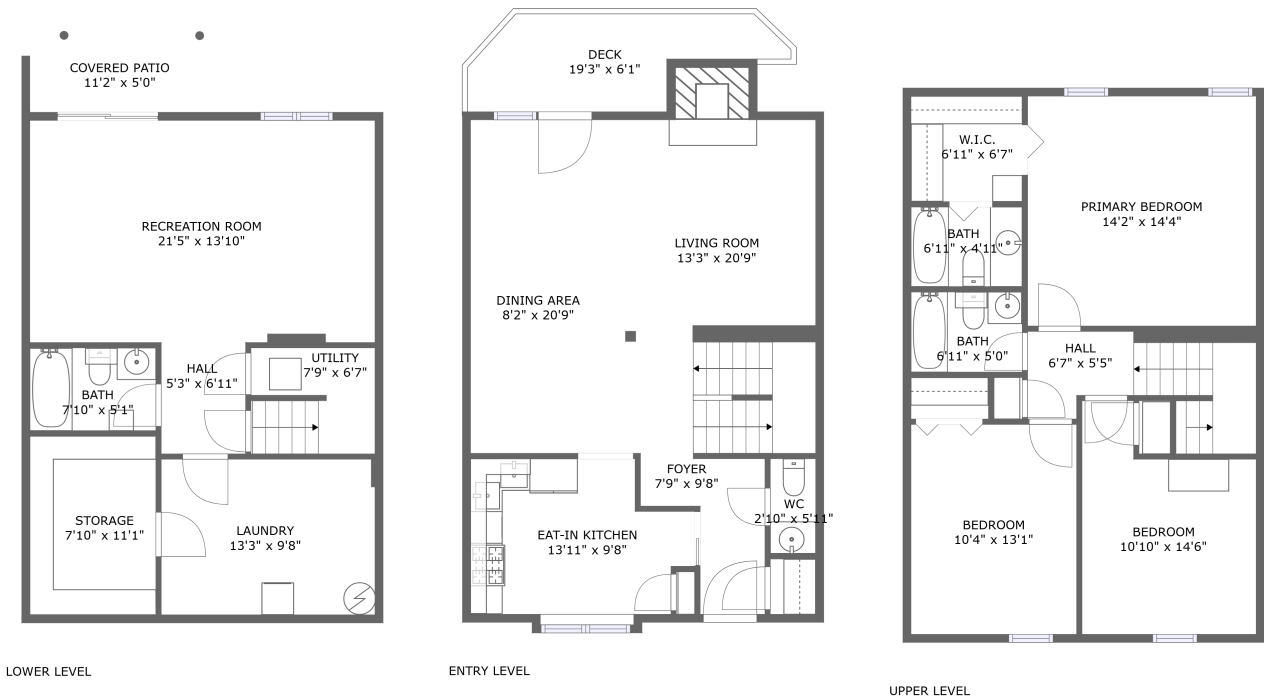


Home report

3516 Stonehenge Square, Ruxton, Cave Spring, Roanoke,
Roanoke County, Virginia, United States, 24018



Total Area: 1907 sq. ft

Below Ground: 522 sq. ft, Floor 2: 667 sq. ft, Floor 3: 718 sq. ft

Excluded: Storage 87 sq. ft, Utility 51 sq. ft, Covered patio 56 sq. ft, Deck 90 sq. ft, Fireplace 18 sq. ft, Walls: 162 sq. ft

Property summary

3 Floors

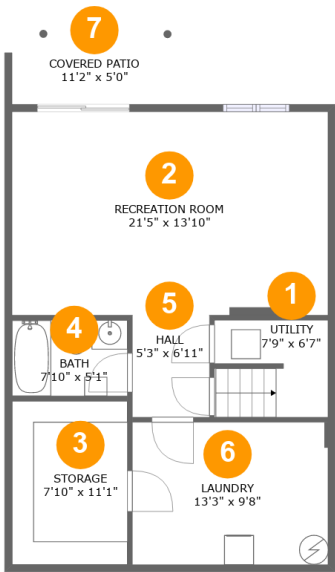
3 Bedrooms

3 Bathrooms

1 Half baths

Home report

3516 Stonehenge Square, Ruxton, Cave Spring, Roanoke,
Roanoke County, Virginia, United States, 24018



Room dimensions

Floor 1 Below ground Total:522sqft Excluded: 194sqft

#		Max Dimensions	sqft	Included
1	Utility	7'9" x 6'7"	49 sq. ft	No
2	Recreation Room	21'5" x 13'10"	296 sq. ft	Yes
3	Storage	7'10" x 11'1"	87 sq. ft	No
4	Bath	7'10" x 5'1"	40 sq. ft	Yes
5	Hall	5'3" x 6'11"	36 sq. ft	Yes
6	Laundry	13'3" x 9'8"	129 sq. ft	Yes
7	Covered Patio	11'2" x 5'0"	56 sq. ft	No

Home report

3516 Stonehenge Square, Ruxton, Cave Spring, Roanoke,
Roanoke County, Virginia, United States, 24018



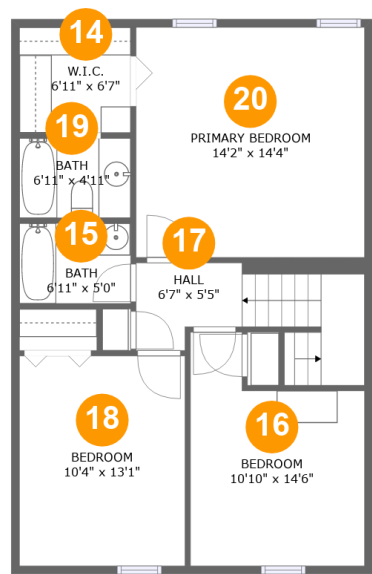
Room dimensions

Floor 2 Total:667sqft Excluded: 108sqft

#		Max Dimensions	sqft	Included
8	Deck	19'3" x 6'1"	90 sq. ft	No
9	Living Room	13'3" x 20'9"	282 sq. ft	Yes
10	Foyer	7'9" x 9'8"	51 sq. ft	Yes
11	Eat-in Kitchen	13'11" x 9'8"	122 sq. ft	Yes
12	WC	2'10" x 5'11"	17 sq. ft	Yes
13	Dining Area	8'2" x 20'9"	170 sq. ft	Yes

Home report

3516 Stonehenge Square, Ruxton, Cave Spring, Roanoke,
Roanoke County, Virginia, United States, 24018



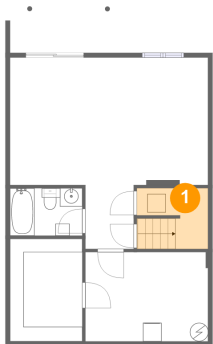
Room dimensions

Floor 3 Total:718sqft Excluded: 0sqft

#		Max Dimensions	sqft	Included
14	W.I.C.	6'11" x 6'7"	45 sq. ft	Yes
15	Bath	6'11" x 5'0"	34 sq. ft	Yes
16	Bedroom	10'10" x 14'6"	130 sq. ft	Yes
17	Hall	6'7" x 5'5"	73 sq. ft	Yes
18	Bedroom	10'4" x 13'1"	134 sq. ft	Yes
19	Bath	6'11" x 4'11"	34 sq. ft	Yes
20	Primary Bedroom	14'2" x 14'4"	203 sq. ft	Yes

3516 Stonehenge Square, Ruxton, Cave Spring, Roanoke,
Roanoke County, Virginia, United States, 24018

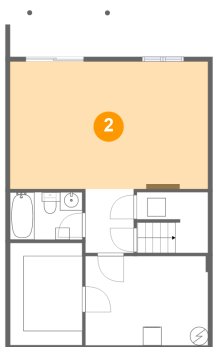
1 Floor 1 - Utility



Max Dimensions: 7'9" x 6'7"
Calculated Area: 49 sq. ft
Included: No

Heated: Yes
Finished: No
Enclosed: Yes
Contiguous: Yes
Permitted: Yes
Wet space: No
Addition: No
Conversion: No

2 Floor 1 - Recreation Room

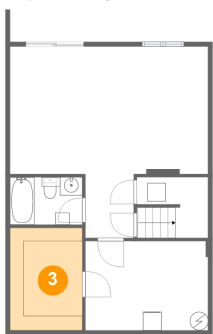


Max Dimensions: 21'5" x 13'10"
Calculated Area: 296 sq. ft
Included: Yes

Heated: Yes
Finished: Yes
Enclosed: Yes
Contiguous: Yes
Permitted: Yes
Wet space: No
Addition: No
Conversion: No

3516 Stonehenge Square, Ruxton, Cave Spring, Roanoke,
Roanoke County, Virginia, United States, 24018

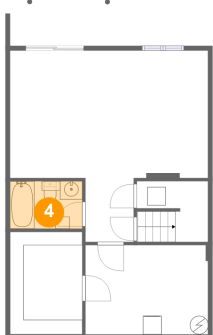
3 Floor 1 - Storage



Max Dimensions: 7'10" x 11'1"
Calculated Area: 87 sq. ft
Included: No

Heated: No
Finished: No
Enclosed: No
Contiguous: Yes
Permitted: Yes
Wet space: No
Addition: No
Conversion: No

4 Floor 1 - Bath



Max Dimensions: 7'10" x 5'1"
Calculated Area: 40 sq. ft
Included: Yes

Heated: Yes
Finished: Yes
Enclosed: Yes
Contiguous: Yes
Permitted: Yes
Wet space: Yes
Addition: No
Conversion: No

5 Floor 1 - Hall

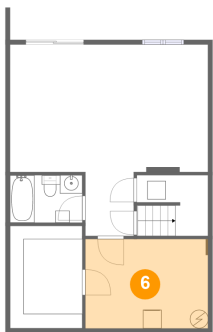


Max Dimensions: 5'3" x 6'11"
Calculated Area: 36 sq. ft
Included: Yes

Heated: Yes
Finished: Yes
Enclosed: Yes
Contiguous: Yes
Permitted: Yes
Wet space: No
Addition: No
Conversion: No

3516 Stonehenge Square, Ruxton, Cave Spring, Roanoke,
Roanoke County, Virginia, United States, 24018

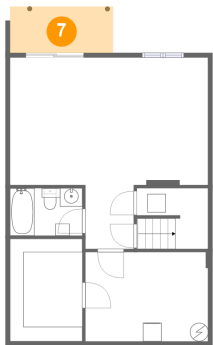
6 Floor 1 - Laundry



Max Dimensions: 13'3" x 9'8"
Calculated Area: 129 sq. ft
Included: Yes

Heated: Yes
Finished: Yes
Enclosed: Yes
Contiguous: Yes
Permitted: Yes
Wet space: No
Addition: No
Conversion: No

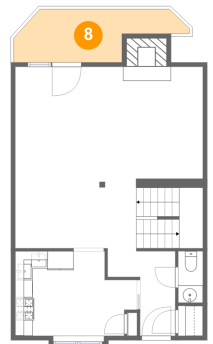
7 Floor 1 - Covered Patio



Max Dimensions: 11'2" x 5'0"
Calculated Area: 56 sq. ft
Included: No

Heated: No
Finished: Yes
Enclosed: No
Contiguous: Yes
Permitted: Yes
Wet space: No
Addition: No
Conversion: No

8 Floor 2 - Deck

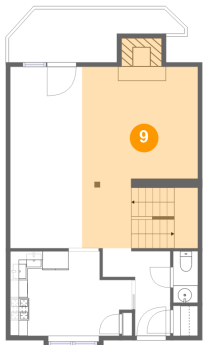


Max Dimensions: 19'3" x 6'1"
Calculated Area: 90 sq. ft
Included: No

Heated: No
Finished: Yes
Enclosed: No
Contiguous: No
Permitted: Yes
Wet space: No
Addition: No
Conversion: No

3516 Stonehenge Square, Ruxton, Cave Spring, Roanoke,
Roanoke County, Virginia, United States, 24018

9 Floor 2 - Living Room



Max Dimensions: 13'3" x 20'9"
Calculated Area: 282 sq. ft
Included: Yes

Heated: Yes
Finished: Yes
Enclosed: Yes
Contiguous: Yes
Permitted: Yes
Wet space: No
Addition: No
Conversion: No

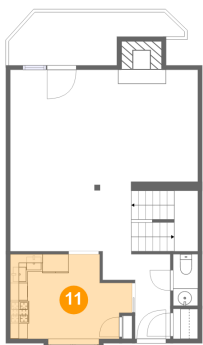
10 Floor 2 - Foyer



Max Dimensions: 7'9" x 9'8"
Calculated Area: 51 sq. ft
Included: Yes

Heated: Yes
Finished: Yes
Enclosed: Yes
Contiguous: Yes
Permitted: Yes
Wet space: No
Addition: No
Conversion: No

11 Floor 2 - Eat-in Kitchen



Max Dimensions: 13'11" x 9'8"
Calculated Area: 122 sq. ft
Included: Yes

Heated: Yes
Finished: Yes
Enclosed: Yes
Contiguous: Yes
Permitted: Yes
Wet space: No
Addition: No
Conversion: No

3516 Stonehenge Square, Ruxton, Cave Spring, Roanoke,
Roanoke County, Virginia, United States, 24018

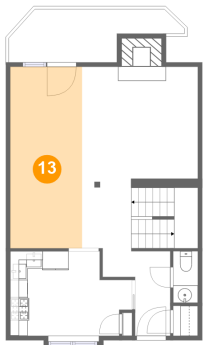
12 Floor 2 - WC



Max Dimensions: 2'10" x 5'11"
Calculated Area: 17 sq. ft
Included: Yes

Heated: Yes
Finished: Yes
Enclosed: Yes
Contiguous: Yes
Permitted: Yes
Wet space: Yes
Addition: No
Conversion: No

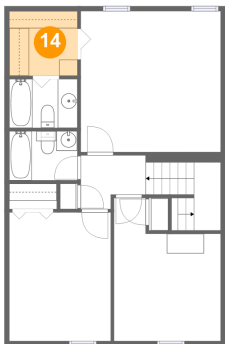
13 Floor 2 - Dining Area



Max Dimensions: 8'2" x 20'9"
Calculated Area: 170 sq. ft
Included: Yes

Heated: Yes
Finished: Yes
Enclosed: Yes
Contiguous: Yes
Permitted: Yes
Wet space: No
Addition: No
Conversion: No

14 Floor 3 - W.I.C.

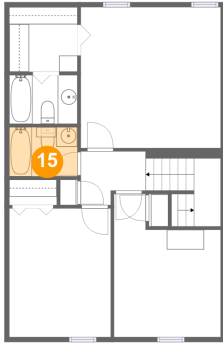


Max Dimensions: 6'11" x 6'7"
Calculated Area: 45 sq. ft
Included: Yes

Heated: Yes
Finished: Yes
Enclosed: Yes
Contiguous: Yes
Permitted: Yes
Wet space: No
Addition: No
Conversion: No

3516 Stonehenge Square, Ruxton, Cave Spring, Roanoke,
Roanoke County, Virginia, United States, 24018

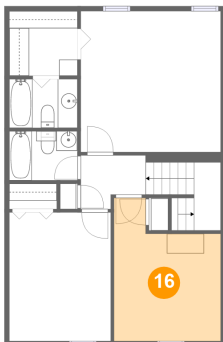
15 Floor 3 - Bath



Max Dimensions: 6'11" x 5'0"
Calculated Area: 34 sq. ft
Included: Yes

Heated: Yes
Finished: Yes
Enclosed: Yes
Contiguous: Yes
Permitted: Yes
Wet space: Yes
Addition: No
Conversion: No

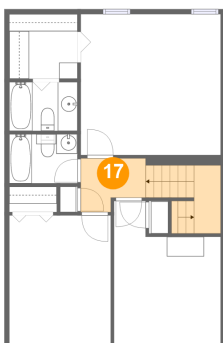
16 Floor 3 - Bedroom



Max Dimensions: 10'10" x 14'6"
Calculated Area: 130 sq. ft
Included: Yes

Heated: Yes
Finished: Yes
Enclosed: Yes
Contiguous: Yes
Permitted: Yes
Wet space: No
Addition: No
Conversion: No

17 Floor 3 - Hall

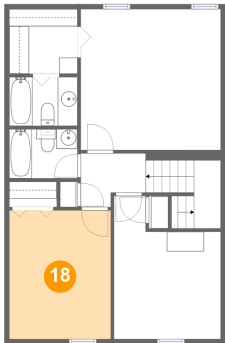


Max Dimensions: 6'7" x 5'5"
Calculated Area: 73 sq. ft
Included: Yes

Heated: Yes
Finished: Yes
Enclosed: Yes
Contiguous: Yes
Permitted: Yes
Wet space: No
Addition: No
Conversion: No

3516 Stonehenge Square, Ruxton, Cave Spring, Roanoke,
Roanoke County, Virginia, United States, 24018

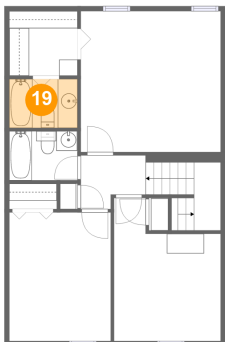
18 Floor 3 - Bedroom



Max Dimensions: 10'4" x 13'1"
Calculated Area: 134 sq. ft
Included: Yes

Heated: Yes
Finished: Yes
Enclosed: Yes
Contiguous: Yes
Permitted: Yes
Wet space: No
Addition: No
Conversion: No

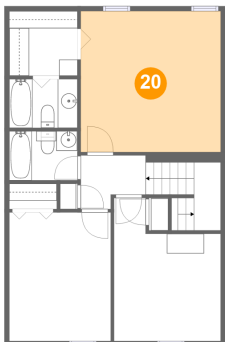
19 Floor 3 - Bath



Max Dimensions: 6'11" x 4'11"
Calculated Area: 34 sq. ft
Included: Yes

Heated: Yes
Finished: Yes
Enclosed: Yes
Contiguous: Yes
Permitted: Yes
Wet space: Yes
Addition: No
Conversion: No

20 Floor 3 - Primary Bedroom



Max Dimensions: 14'2" x 14'4"
Calculated Area: 203 sq. ft
Included: Yes

Heated: Yes
Finished: Yes
Enclosed: Yes
Contiguous: Yes
Permitted: Yes
Wet space: No
Addition: No
Conversion: No