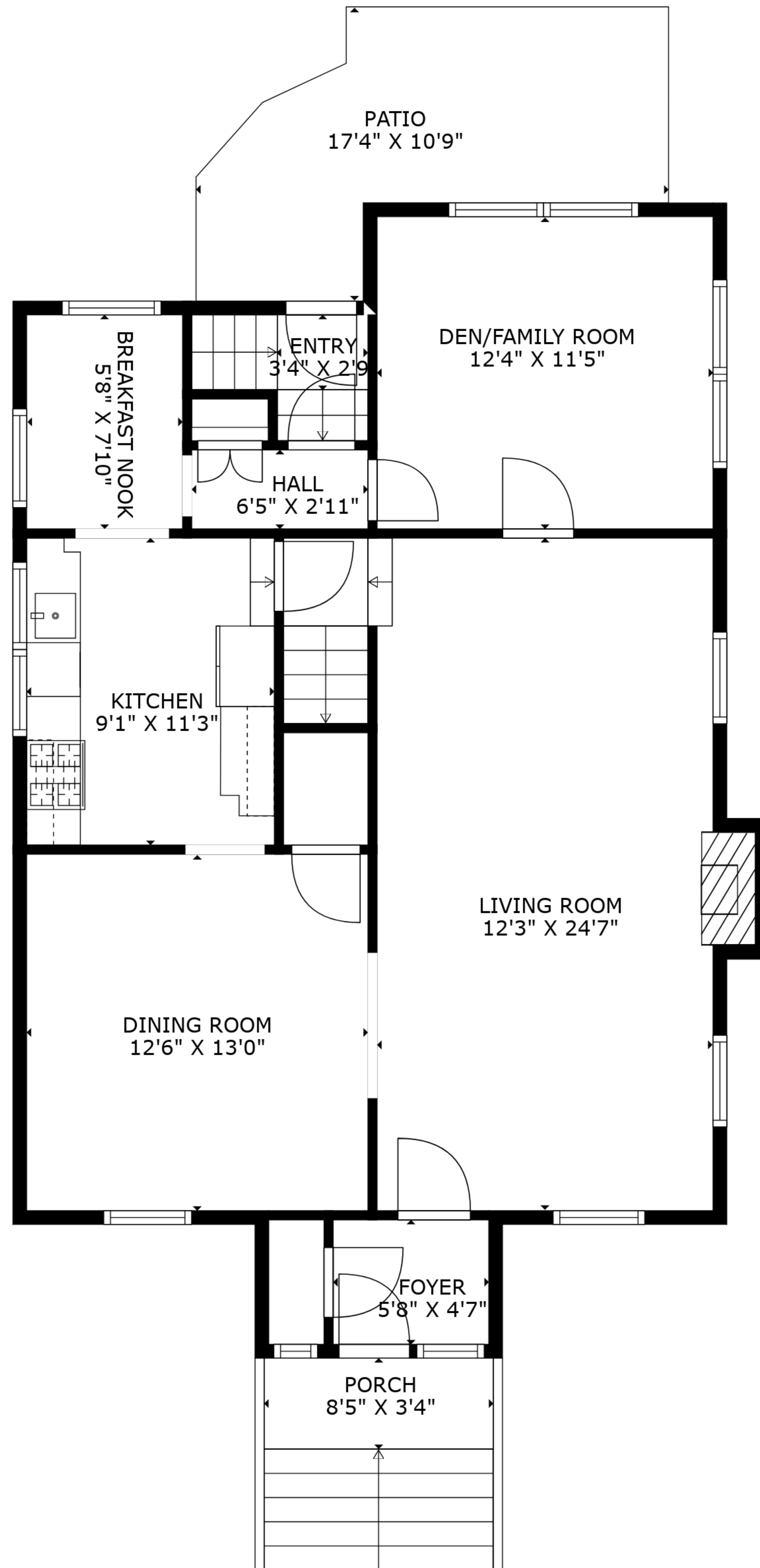


TOTAL: 2637 sq. ft

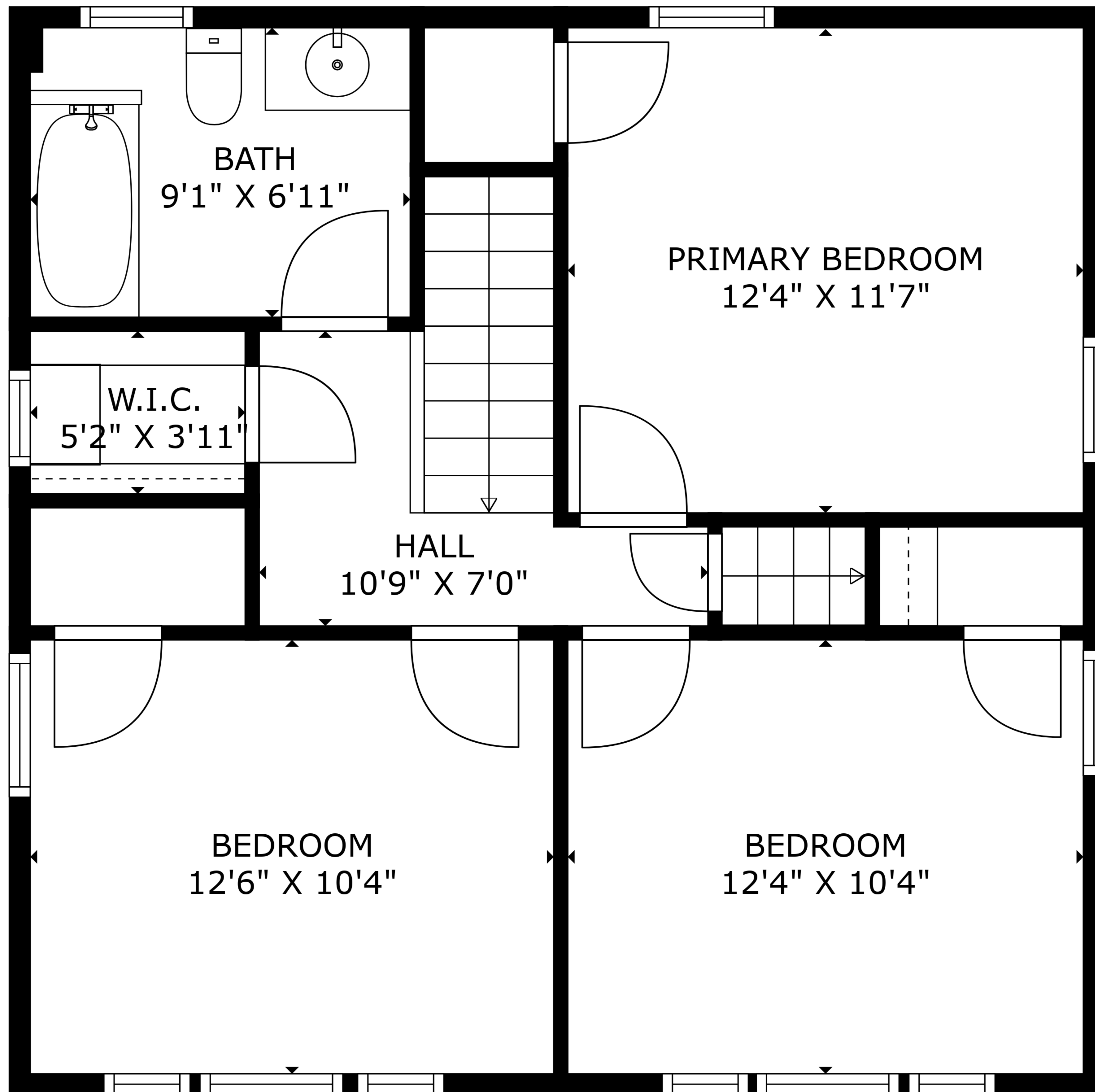
BELOW GROUND: 834 sq. ft, FIRST FLOOR: 912 sq. ft, SECOND FLOOR: 629 sq. ft, THIRD FLOOR: 262 sq. ft
EXCLUDED AREAS: PORCH: 28 sq. ft, PATIO: 126 sq. ft, FIREPLACE: 8 sq. ft,
LOW CEILING: 99 sq. ft

61 HAWTHORNE AVENUE, GLEN RIDGE



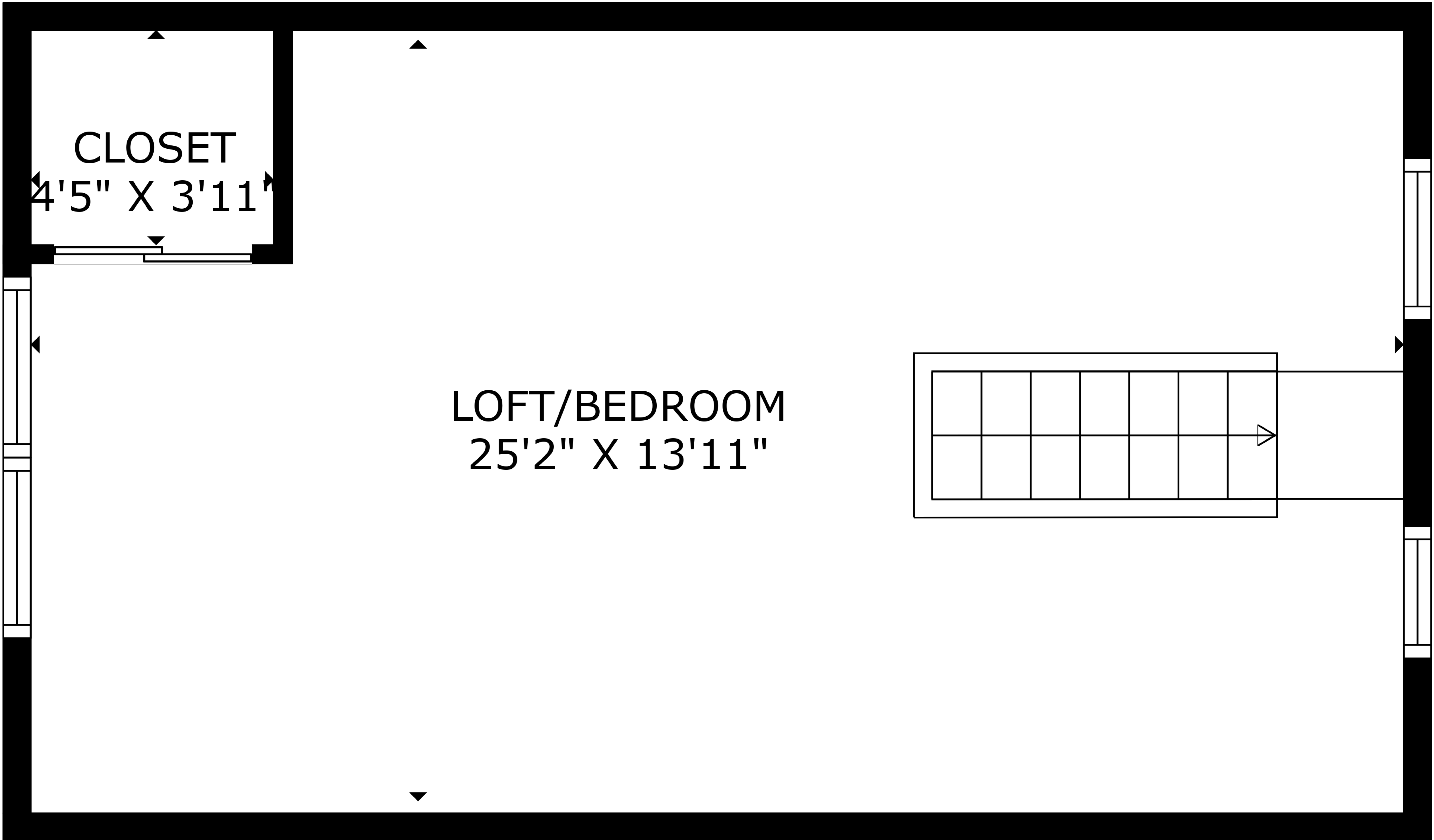
TOTAL: 2637 sq. ft

BELOW GROUND: 834 sq. ft, FIRST FLOOR: 912 sq. ft, SECOND FLOOR: 629 sq. ft, THIRD FLOOR: 262 sq. ft
EXCLUDED AREAS: PORCH: 28 sq. ft, PATIO: 126 sq. ft, FIREPLACE: 8 sq. ft,
LOW CEILING: 99 sq. ft



TOTAL: 2637 sq. ft

BELOW GROUND: 834 sq. ft, FIRST FLOOR: 912 sq. ft, SECOND FLOOR: 629 sq. ft, THIRD FLOOR: 262 sq. ft
EXCLUDED AREAS: PORCH: 28 sq. ft, PATIO: 126 sq. ft, FIREPLACE: 8 sq. ft,
LOW CEILING: 99 sq. ft

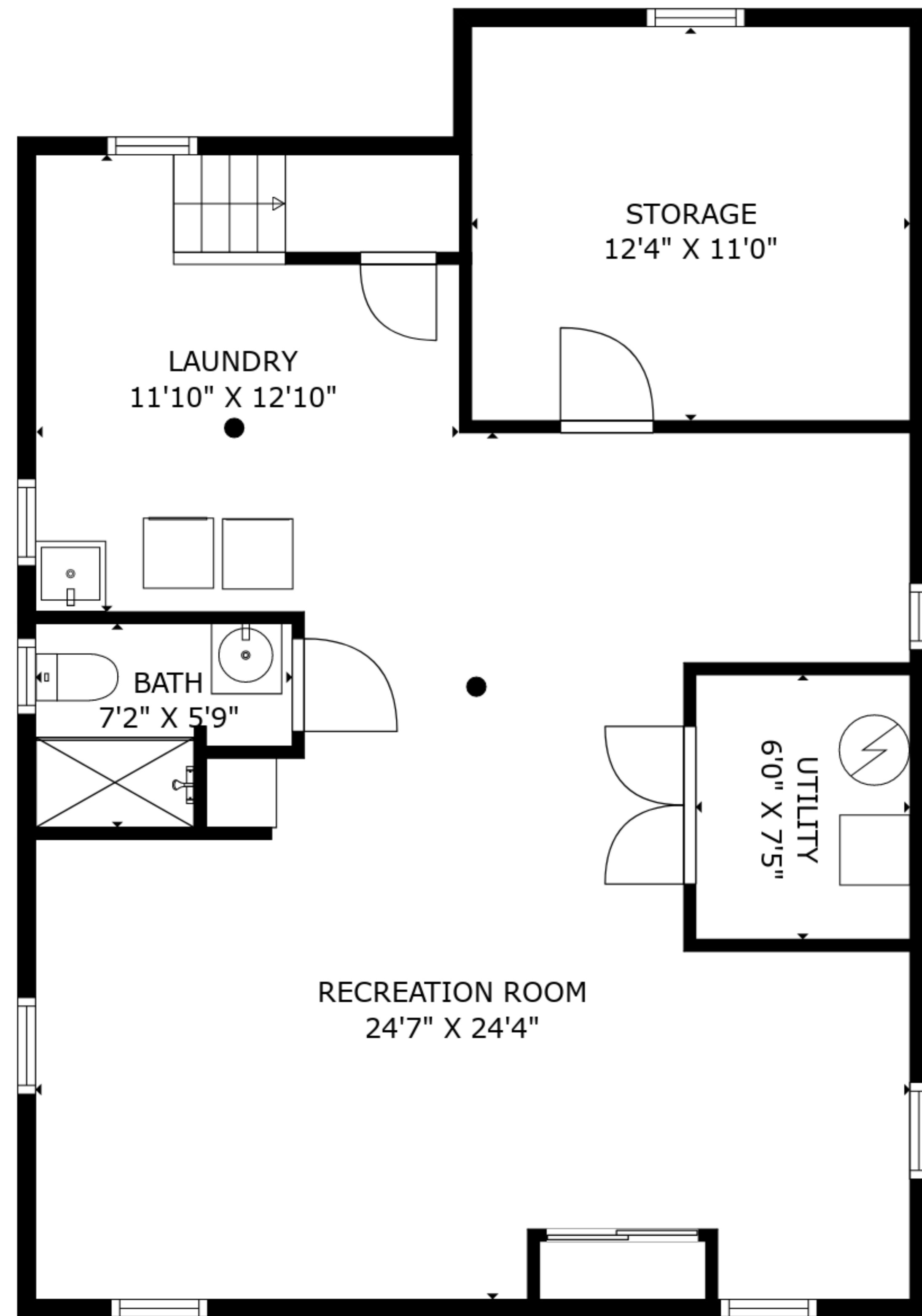


LOFT/BEDROOM
25'2" X 13'11"

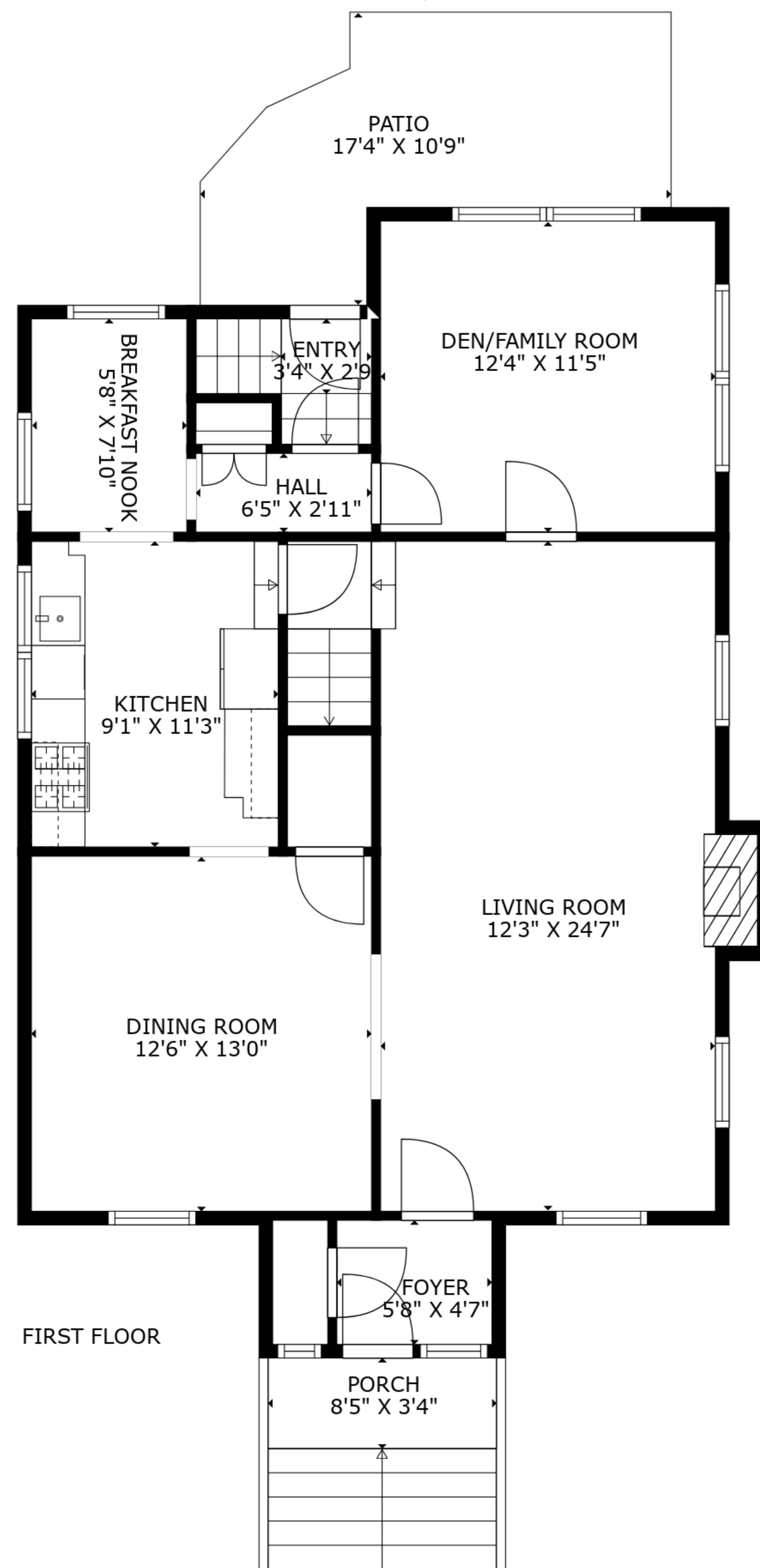
CLOSET
4'5" X 3'11"

TOTAL: 2637 sq. ft
BELOW GROUND: 834 sq. ft, FIRST FLOOR: 912 sq. ft, SECOND FLOOR: 629 sq. ft, THIRD FLOOR: 262 sq. ft
EXCLUDED AREAS: PORCH: 28 sq. ft, PATIO: 126 sq. ft, FIREPLACE: 8 sq. ft,
LOW CEILING: 99 sq. ft

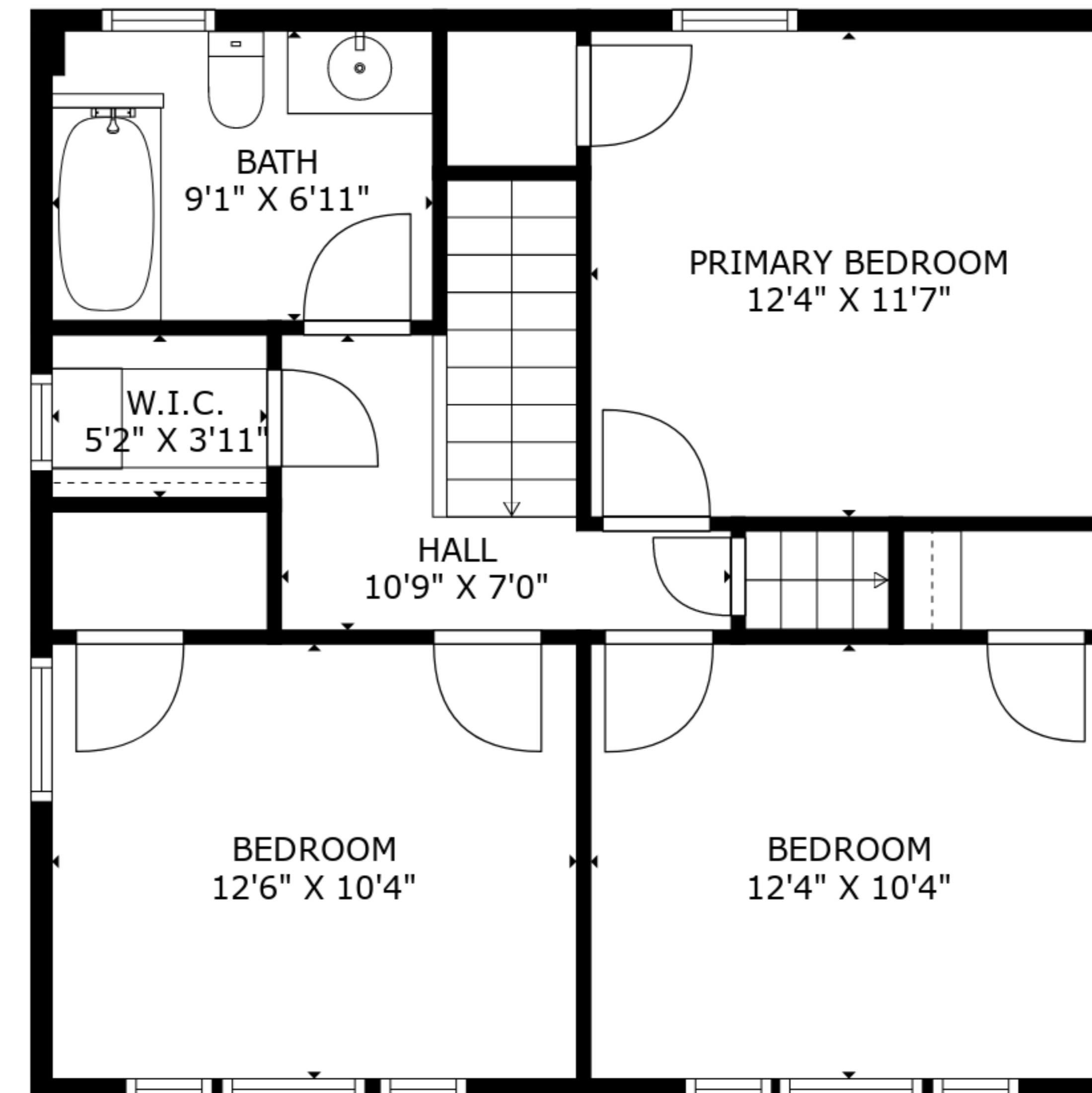
61 HAWTHORNE AVENUE, GLEN RIDGE



LOWER LEVEL



FIRST FLOOR



SECOND FLOOR



THIRD FLOOR

TOTAL: 2637 sq. ft

BELOW GROUND: 834 sq. ft, FIRST FLOOR: 912 sq. ft, SECOND FLOOR: 629 sq. ft, THIRD FLOOR: 262 sq. ft

EXCLUDED AREAS: PORCH: 28 sq. ft, PATIO: 126 sq. ft, FIREPLACE: 8 sq. ft,

LOW CEILING: 99 sq. ft