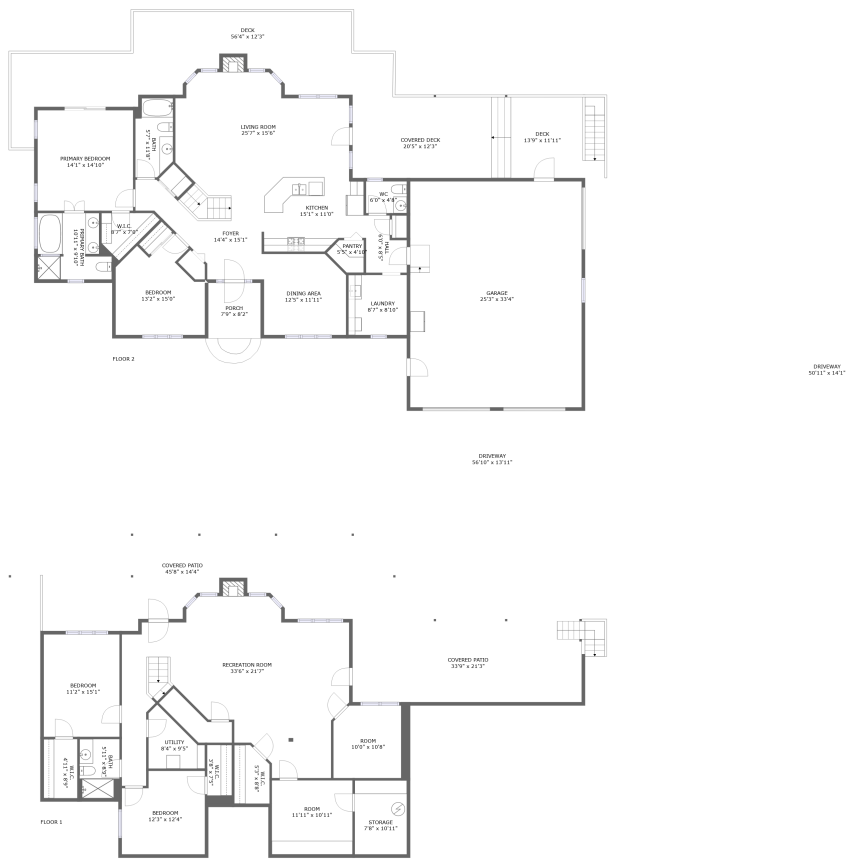



Home report

383 Maiden Ln, Speedwell, Claiborne County, Tennessee, United States, 37870




Property summary




1

Garages




4

Bedrooms



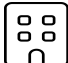
3

Bathrooms




1

Half baths




2

Floors



3,358

Gross living area sqft

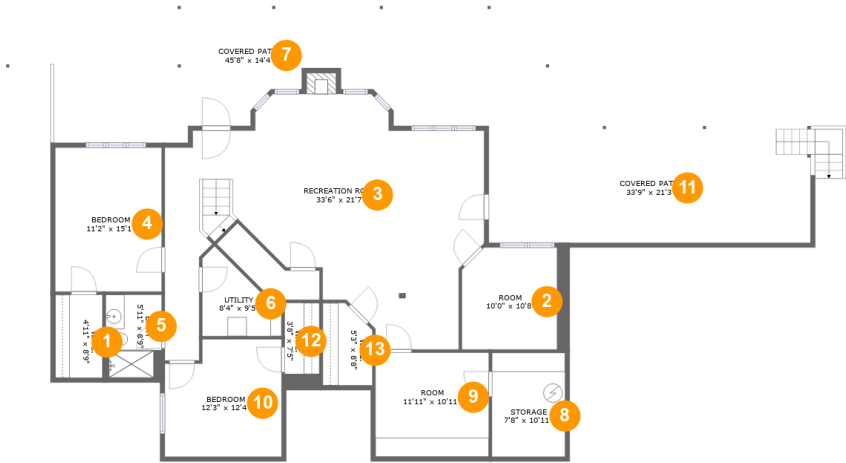


6,376

Total sqft

Home report

383 Maiden Ln, Speedwell, Claiborne County, Tennessee, United States, 37870



Room dimensions

Floor 1

Total sqft: 2678

Living area: 1602

#		Max Dimensions	sqft	Included
1	W.I.C.	4'11" x 8'9"	43 sq. ft	Yes
2	Room	10'0" x 10'8"	104 sq. ft	Yes
3	Recreation Room	33'6" x 21'7"	638 sq. ft	Yes
4	Bedroom	11'2" x 15'1"	169 sq. ft	Yes
5	Bath	5'11" x 8'9"	51 sq. ft	Yes
6	Utility	8'4" x 9'5"	53 sq. ft	Yes
7	Covered Patio	45'8" x 14'4"	461 sq. ft	No
8	Storage	7'8" x 10'11"	84 sq. ft	No
9	Room	11'11" x 10'11"	130 sq. ft	Yes
10	Bedroom	12'3" x 12'4"	141 sq. ft	Yes
11	Covered Patio	33'9" x 21'3"	513 sq. ft	No

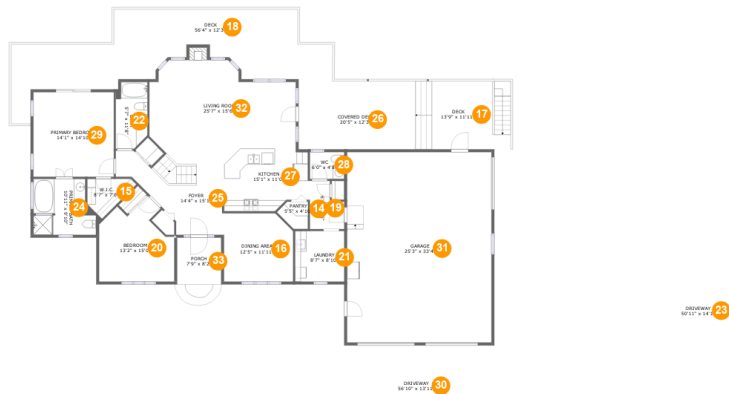
Home report

383 Maiden Ln, Speedwell, Claiborne County, Tennessee, United States, 37870

#		Max Dimensions	sqft	Included
12	W.I.C.	3'8" x 7'5"	32 sq. ft	Yes
13	W.I.C.	5'3" x 8'8"	41 sq. ft	Yes

Home report

383 Maiden Ln, Speedwell, Claiborne County, Tennessee, United States, 37870



Room dimensions

Floor 2

Total sqft: 3698

Living area: 1756

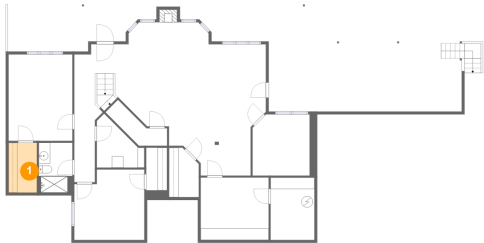
#		Max Dimensions	sqft	Included
14	Pantry	5'5" x 4'10"	20 sq. ft	Yes
15	W.I.C.	8'7" x 7'0"	39 sq. ft	Yes
16	Dining Area	12'5" x 11'11"	141 sq. ft	Yes
17	Deck	13'9" x 11'11"	200 sq. ft	No
18	Deck	56'4" x 12'3"	534 sq. ft	No
19	Hall	6'0" x 8'5"	43 sq. ft	Yes
20	Bedroom	13'2" x 15'0"	152 sq. ft	Yes
21	Laundry	8'7" x 8'10"	76 sq. ft	Yes
22	Bath	5'7" x 11'8"	61 sq. ft	Yes
23	Driveway	50'11" x 14'1"	670 sq. ft	No
24	Primary Bath	10'11" x 9'10"	96 sq. ft	Yes

Home report

383 Maiden Ln, Speedwell, Claiborne County, Tennessee, United States, 37870

#		Max Dimensions	sqft	Included
25	Foyer	14'4" x 15'1"	191 sq. ft	Yes
26	Covered Deck	20'5" x 12'3"	245 sq. ft	No
27	Kitchen	15'1" x 11'0"	153 sq. ft	Yes
28	WC	6'0" x 4'8"	28 sq. ft	Yes
29	Primary Bedroom	14'1" x 14'10"	209 sq. ft	Yes
30	Driveway	56'10" x 13'11"	659 sq. ft	No
31	Garage	25'3" x 33'4"	843 sq. ft	No
32	Living Room	25'7" x 15'6"	354 sq. ft	Yes
33	Porch	7'9" x 8'2"	63 sq. ft	No

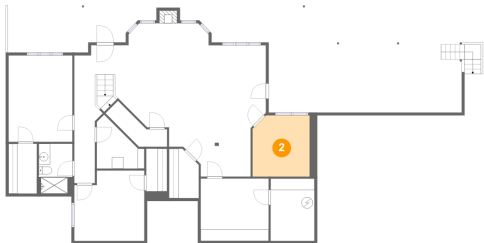
1 Floor 1 - W.I.C.



Max Dimensions: 4'11" x 8'9"
Calculated Area: 43 sq. ft
Included: Yes

Heated: Yes
Finished: Yes
Enclosed: Yes
Contiguous: Yes
Permitted: Yes
Wet space: No
Addition: No
Conversion: No

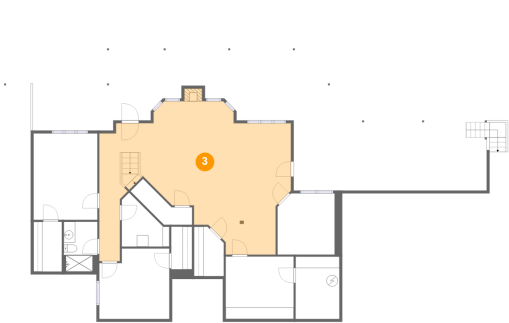
2 Floor 1 - Room



Max Dimensions: 10'0" x 10'8"
Calculated Area: 104 sq. ft
Included: Yes

Heated: Yes
Finished: Yes
Enclosed: Yes
Contiguous: Yes
Permitted: Yes
Wet space: No
Addition: No
Conversion: No

3 Floor 1 - Recreation Room



Max Dimensions: 33'6" x 21'7"
Calculated Area: 638 sq. ft
Included: Yes

Heated: Yes
Finished: Yes
Enclosed: Yes
Contiguous: Yes
Permitted: Yes
Wet space: No
Addition: No
Conversion: No

4 Floor 1 - Bedroom



Max Dimensions: 11'2" x 15'1"
Calculated Area: 169 sq. ft
Included: Yes

Heated: Yes
Finished: Yes
Enclosed: Yes
Contiguous: Yes
Permitted: Yes
Wet space: No
Addition: No
Conversion: No

5 Floor 1 - Bath

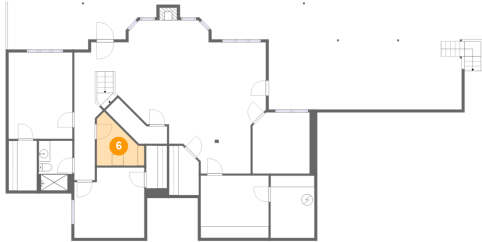


Max Dimensions: 5'11" x 8'9"
Calculated Area: 51 sq. ft
Included: Yes

Heated: Yes
Finished: Yes
Enclosed: Yes
Contiguous: Yes
Permitted: Yes
Wet space: Yes
Addition: No
Conversion: No

383 Maiden Ln, Speedwell, Claiborne County, Tennessee, United States, 37870

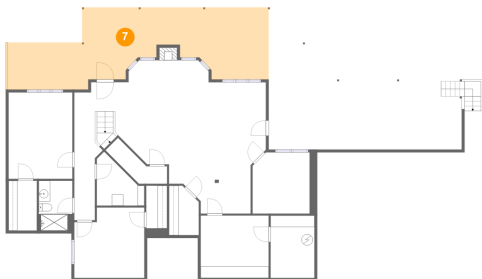
6 Floor 1 - Utility



Max Dimensions: 8'4" x 9'5"
Calculated Area: 53 sq. ft
Included: Yes

Heated: Yes
Finished: Yes
Enclosed: Yes
Contiguous: Yes
Permitted: Yes
Wet space: No
Addition: No
Conversion: No

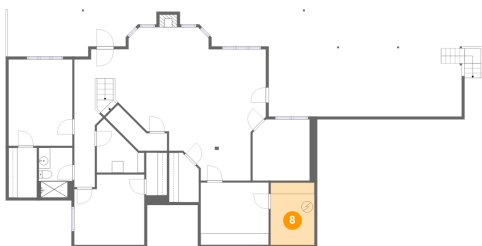
7 Floor 1 - Covered Patio



Max Dimensions: 45'8" x 14'4"
Calculated Area: 461 sq. ft
Included: No

Heated: No
Finished: Yes
Enclosed: No
Contiguous: Yes
Permitted: Yes
Wet space: No
Addition: No
Conversion: No

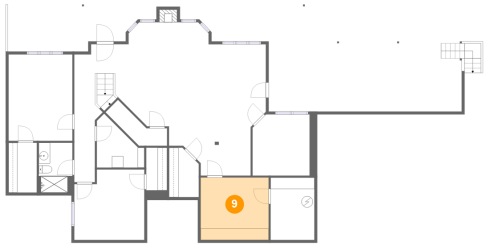
8 Floor 1 - Storage



Max Dimensions: 7'8" x 10'11"
Calculated Area: 84 sq. ft
Included: No

Heated: No
Finished: Yes
Enclosed: No
Contiguous: Yes
Permitted: Yes
Wet space: No
Addition: No
Conversion: No

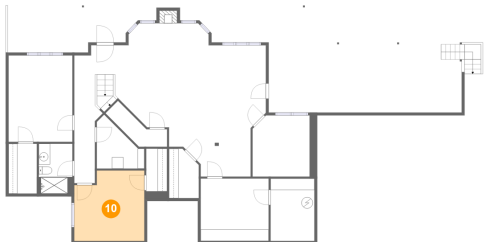
9 Floor 1 - Room



Max Dimensions: 11'11" x 10'11"
Calculated Area: 130 sq. ft
Included: Yes

Heated: Yes
Finished: Yes
Enclosed: Yes
Contiguous: Yes
Permitted: Yes
Wet space: No
Addition: No
Conversion: No

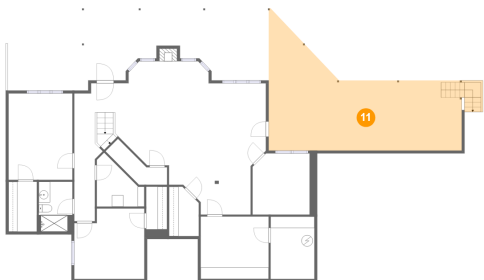
10 Floor 1 - Bedroom



Max Dimensions: 12'3" x 12'4"
Calculated Area: 141 sq. ft
Included: Yes

Heated: Yes
Finished: Yes
Enclosed: Yes
Contiguous: Yes
Permitted: Yes
Wet space: No
Addition: No
Conversion: No

11 Floor 1 - Covered Patio

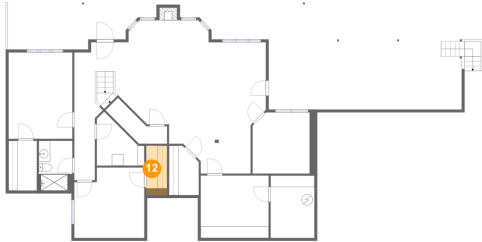


Max Dimensions: 33'9" x 21'3"
Calculated Area: 513 sq. ft
Included: No

Heated: No
Finished: Yes
Enclosed: No
Contiguous: Yes
Permitted: Yes
Wet space: No
Addition: No
Conversion: No

383 Maiden Ln, Speedwell, Claiborne County, Tennessee, United States, 37870

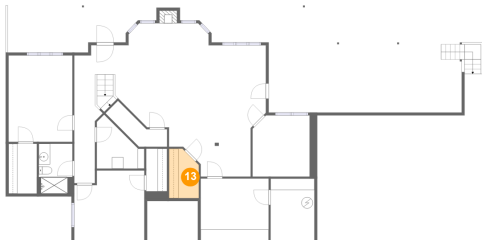
12 Floor 1 - W.I.C.



Max Dimensions: 3'8" x 7'5"
Calculated Area: 32 sq. ft
Included: Yes

Heated: Yes
Finished: Yes
Enclosed: Yes
Contiguous: Yes
Permitted: Yes
Wet space: No
Addition: No
Conversion: No

13 Floor 1 - W.I.C.



Max Dimensions: 5'3" x 8'8"
Calculated Area: 41 sq. ft
Included: Yes

Heated: Yes
Finished: Yes
Enclosed: Yes
Contiguous: Yes
Permitted: Yes
Wet space: No
Addition: No
Conversion: No

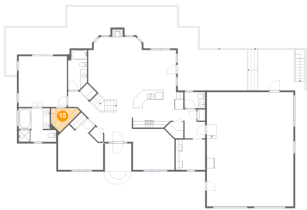
14 Floor 2 - Pantry



Max Dimensions: 5'5" x 4'10"
Calculated Area: 20 sq. ft
Included: Yes

Heated: Yes
Finished: Yes
Enclosed: Yes
Contiguous: Yes
Permitted: Yes
Wet space: No
Addition: No
Conversion: No

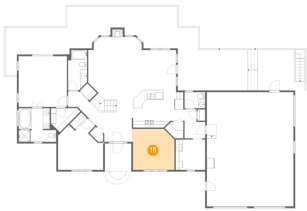
15 Floor 2 - W.I.C.



Max Dimensions: 8'7" x 7'0"
Calculated Area: 39 sq. ft
Included: Yes

Heated: Yes
Finished: Yes
Enclosed: Yes
Contiguous: Yes
Permitted: Yes
Wet space: No
Addition: No
Conversion: No

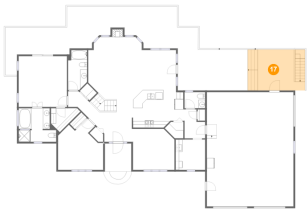
16 Floor 2 - Dining Area



Max Dimensions: 12'5" x 11'11"
Calculated Area: 141 sq. ft
Included: Yes

Heated: Yes
Finished: Yes
Enclosed: Yes
Contiguous: Yes
Permitted: Yes
Wet space: No
Addition: No
Conversion: No

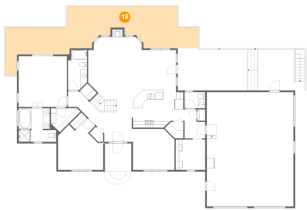
17 Floor 2 - Deck



Max Dimensions: 13'9" x 11'11"
Calculated Area: 200 sq. ft
Included: No

Heated: No
Finished: Yes
Enclosed: No
Contiguous: Yes
Permitted: Yes
Wet space: No
Addition: No
Conversion: No

18 Floor 2 - Deck



Max Dimensions: 56'4" x 12'3"
Calculated Area: 534 sq. ft
Included: No

Heated: No
Finished: Yes
Enclosed: No
Contiguous: Yes
Permitted: Yes
Wet space: No
Addition: No
Conversion: No

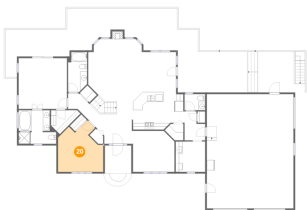
19 Floor 2 - Hall



Max Dimensions: 6'0" x 8'5"
Calculated Area: 43 sq. ft
Included: Yes

Heated: Yes
Finished: Yes
Enclosed: Yes
Contiguous: Yes
Permitted: Yes
Wet space: No
Addition: No
Conversion: No

20 Floor 2 - Bedroom



Max Dimensions: 13'2" x 15'0"
Calculated Area: 152 sq. ft
Included: Yes

Heated: Yes
Finished: Yes
Enclosed: Yes
Contiguous: Yes
Permitted: Yes
Wet space: No
Addition: No
Conversion: No

21 Floor 2 - Laundry



Max Dimensions: 8'7" x 8'10"
Calculated Area: 76 sq. ft
Included: Yes

Heated: Yes
Finished: Yes
Enclosed: Yes
Contiguous: Yes
Permitted: Yes
Wet space: No
Addition: No
Conversion: No

22 Floor 2 - Bath



Max Dimensions: 5'7" x 11'8"
Calculated Area: 61 sq. ft
Included: Yes

Heated: Yes
Finished: Yes
Enclosed: Yes
Contiguous: Yes
Permitted: Yes
Wet space: Yes
Addition: No
Conversion: No

23 Floor 2 - Driveway



Max Dimensions: 50'11" x 14'1"
Calculated Area: 670 sq. ft
Included: No

Heated: No
Finished: No
Enclosed: No
Contiguous: Yes
Permitted: No
Wet space: No
Addition: No
Conversion: No

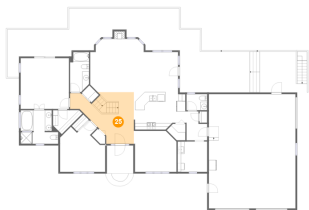
24 Floor 2 - Primary Bath



Max Dimensions: 10'11" x 9'10"
Calculated Area: 96 sq. ft
Included: Yes

Heated: Yes
Finished: Yes
Enclosed: Yes
Contiguous: Yes
Permitted: Yes
Wet space: Yes
Addition: No
Conversion: No

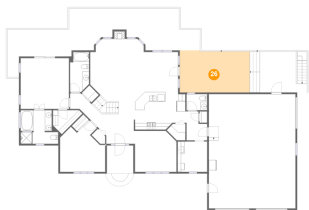
25 Floor 2 - Foyer



Max Dimensions: 14'4" x 15'1"
Calculated Area: 191 sq. ft
Included: Yes

Heated: Yes
Finished: Yes
Enclosed: Yes
Contiguous: Yes
Permitted: Yes
Wet space: No
Addition: No
Conversion: No

26 Floor 2 - Covered Deck



Max Dimensions: 20'5" x 12'3"
Calculated Area: 245 sq. ft
Included: No

Heated: No
Finished: Yes
Enclosed: No
Contiguous: Yes
Permitted: Yes
Wet space: No
Addition: No
Conversion: No

27 Floor 2 - Kitchen



Max Dimensions: 15'1" x 11'0"
Calculated Area: 153 sq. ft
Included: Yes

Heated: Yes
Finished: Yes
Enclosed: Yes
Contiguous: Yes
Permitted: Yes
Wet space: No
Addition: No
Conversion: No

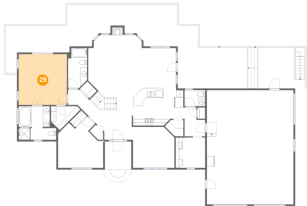
28 Floor 2 - WC



Max Dimensions: 6'0" x 4'8"
Calculated Area: 28 sq. ft
Included: Yes

Heated: Yes
Finished: Yes
Enclosed: Yes
Contiguous: Yes
Permitted: Yes
Wet space: Yes
Addition: No
Conversion: No

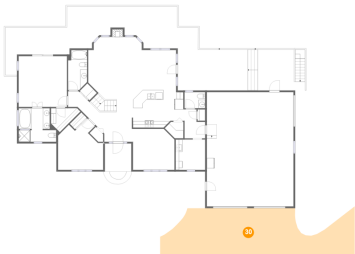
29 Floor 2 - Primary Bedroom



Max Dimensions: 14'1" x 14'10"
Calculated Area: 209 sq. ft
Included: Yes

Heated: Yes
Finished: Yes
Enclosed: Yes
Contiguous: Yes
Permitted: Yes
Wet space: No
Addition: No
Conversion: No

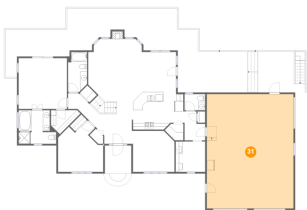
30 Floor 2 - Driveway



Max Dimensions: 56'10" x 13'11"
Calculated Area: 659 sq. ft
Included: No

Heated: No
Finished: No
Enclosed: No
Contiguous: Yes
Permitted: No
Wet space: No
Addition: No
Conversion: No

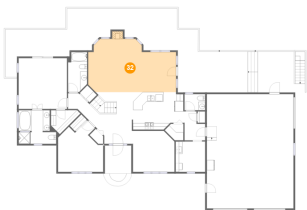
31 Floor 2 - Garage



Max Dimensions: 25'3" x 33'4"
Calculated Area: 843 sq. ft
Included: No

Heated: No
Finished: No
Enclosed: Yes
Contiguous: Yes
Permitted: Yes
Wet space: No
Addition: No
Conversion: No

32 Floor 2 - Living Room

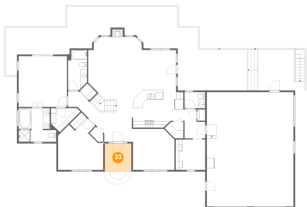


Max Dimensions: 25'7" x 15'6"
Calculated Area: 354 sq. ft
Included: Yes

Heated: Yes
Finished: Yes
Enclosed: Yes
Contiguous: Yes
Permitted: Yes
Wet space: No
Addition: No
Conversion: No

383 Maiden Ln, Speedwell, Claiborne County, Tennessee, United States, 37870

33 Floor 2 - Porch



Max Dimensions: 7'9" x 8'2"
Calculated Area: 63 sq. ft
Included: No

Heated: No
Finished: Yes
Enclosed: No
Contiguous: Yes
Permitted: Yes
Wet space: No
Addition: No
Conversion: No