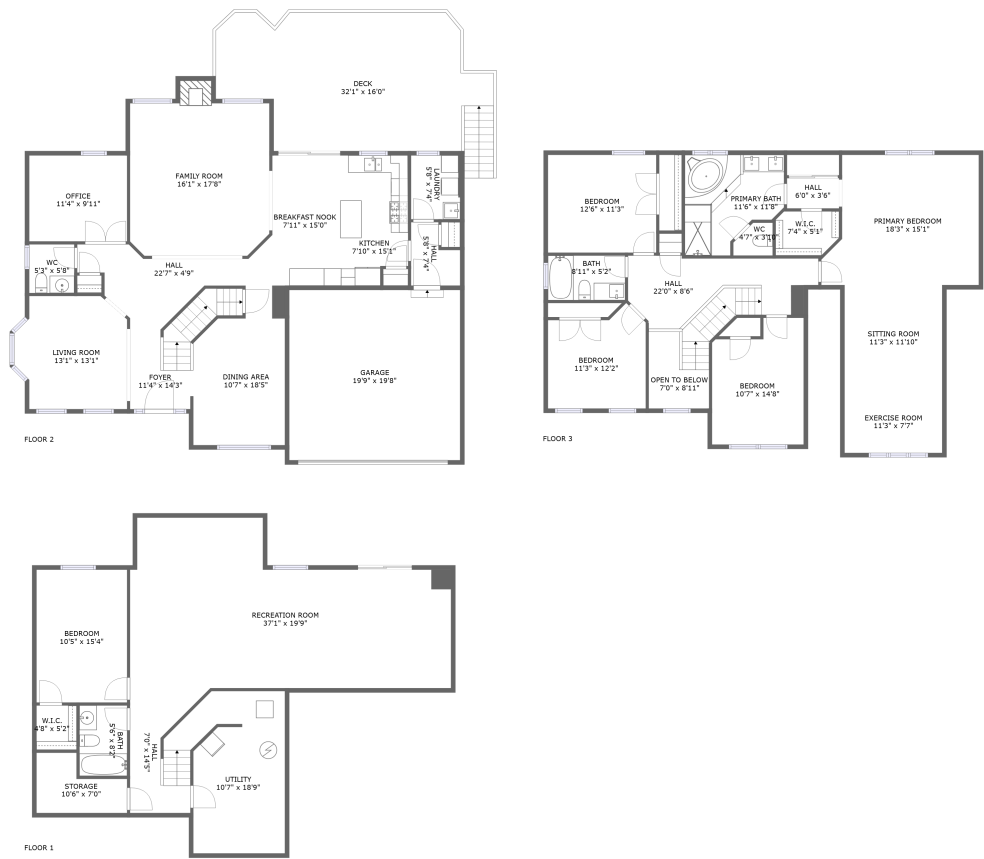


Home report

12967 Queen Chapel Road, Dale City, Woodbridge, Prince William County, Virginia, United States, 22193



Total Area: 3662 sq. ft

Below Ground: 946 sq. ft, Floor 2: 1326 sq. ft, Floor 3: 1390 sq. ft  
Excluded: Storage 55 sq. ft, Utility 207 sq. ft, Garage 389 sq. ft, Outdoor Deck 448 sq. ft, Fireplace 12 sq. ft, Opentobelow 47 sq. ft, Walls: 296 sq. ft

Property summary

 **3** Floors

 **5** Bedrooms

 **3** Bathrooms

Home report

**12967 Queen Chapel Road, Dale City, Woodbridge, Prince  
William County, Virginia, United States, 22193**



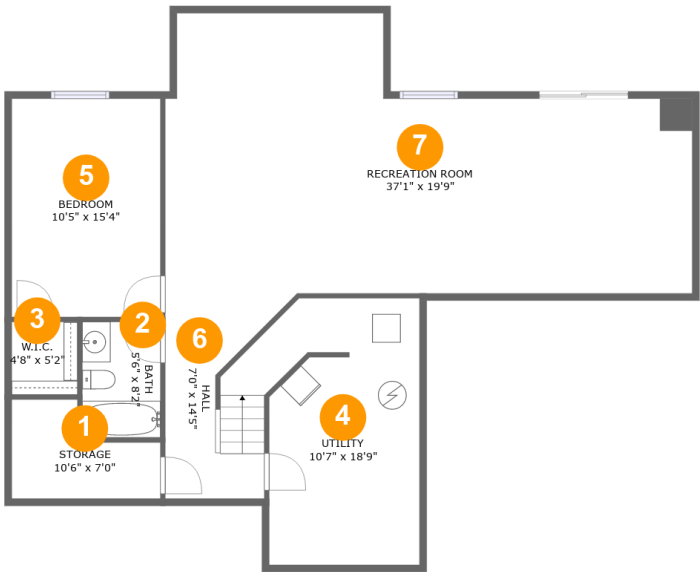
**1**  
Half baths



**1**  
Garages

Home report

12967 Queen Chapel Road, Dale City, Woodbridge, Prince William County, Virginia, United States, 22193



Room dimensions

Floor 1 Below ground Total:946sqft   Excluded: 262sqft

#		Max Dimensions	sqft	Included
1	Storage	10'6" x 7'0"	55 sq. ft	No
2	Bath	5'6" x 8'2"	45 sq. ft	Yes
3	W.I.C.	4'8" x 5'2"	24 sq. ft	Yes
4	Utility	10'7" x 18'9"	205 sq. ft	No
5	Bedroom	10'5" x 15'4"	161 sq. ft	Yes
6	Hall	7'0" x 14'5"	92 sq. ft	Yes
7	Recreation Room	37'1" x 19'9"	596 sq. ft	Yes

Home report

12967 Queen Chapel Road, Dale City, Woodbridge, Prince William County, Virginia, United States, 22193



Room dimensions

Floor 2 Total:1326sqft Excluded: 849sqft

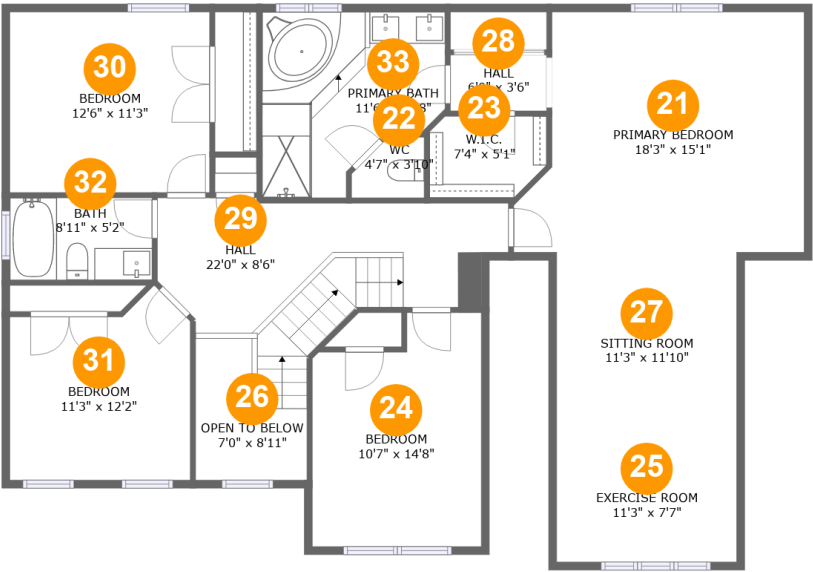
#		Max Dimensions	sqft	Included
8	Breakfast Nook	7'11" x 15'0"	119 sq. ft	Yes
9	WC	5'3" x 5'8"	29 sq. ft	Yes
10	Family Room	16'1" x 17'8"	289 sq. ft	Yes
11	Foyer	11'4" x 14'3"	130 sq. ft	Yes
12	Hall	22'7" x 4'9"	81 sq. ft	Yes
13	Office	11'4" x 9'11"	112 sq. ft	Yes
14	Hall	5'8" x 7'4"	34 sq. ft	Yes
15	Garage	19'9" x 19'8"	389 sq. ft	No
16	Kitchen	7'10" x 15'1"	110 sq. ft	Yes
17	Living Room	13'1" x 13'1"	153 sq. ft	Yes
18	Dining Area	10'7" x 18'5"	163 sq. ft	Yes

Home report

12967 Queen Chapel Road, Dale City, Woodbridge, Prince William County, Virginia, United States, 22193

#		Max Dimensions	sqft	Included
19	Laundry	5'8" x 7'4"	42 sq. ft	Yes
20	Deck	32'1" x 16'0"	448 sq. ft	No

12967 Queen Chapel Road, Dale City, Woodbridge, Prince William County, Virginia, United States, 22193



Room dimensions

Floor 3 Total:1390sqft    Excluded: 47sqft

#		Max Dimensions	sqft	Included
21	Primary Bedroom	18'3" x 15'1"	248 sq. ft	Yes
22	WC	4'7" x 3'10"	15 sq. ft	Yes
23	W.I.C.	7'4" x 5'1"	35 sq. ft	Yes
24	Bedroom	10'7" x 14'8"	141 sq. ft	Yes
25	Exercise Room	11'3" x 7'7"	85 sq. ft	Yes
26	Open To Below	7'0" x 8'11"	47 sq. ft	No
27	Sitting Room	11'3" x 11'10"	134 sq. ft	Yes
28	Hall	6'0" x 3'6"	21 sq. ft	Yes
29	Hall	22'0" x 8'6"	172 sq. ft	Yes
30	Bedroom	12'6" x 11'3"	142 sq. ft	Yes
31	Bedroom	11'3" x 12'2"	120 sq. ft	Yes

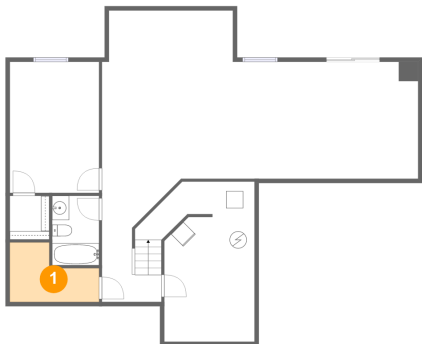
Home report

12967 Queen Chapel Road, Dale City, Woodbridge, Prince William County, Virginia, United States, 22193

#		Max Dimensions	sqft	Included
32	Bath	8'11" x 5'2"	46 sq. ft	Yes
33	Primary Bath	11'6" x 11'8"	110 sq. ft	Yes

12967 Queen Chapel Road, Dale City, Woodbridge, Prince William County, Virginia, United States, 22193

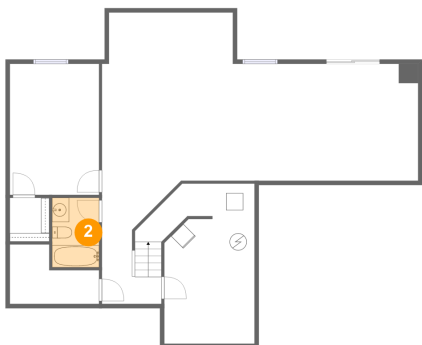
1 Floor 1 - Storage



Max Dimensions: 10'6" x 7'0"  
Calculated Area: 55 sq. ft  
Included: No

Heated: No  
Finished: Yes  
Enclosed: No  
Contiguous: Yes  
Permitted: Yes  
Wet space: No  
Addition: No  
Conversion: No

2 Floor 1 - Bath



Max Dimensions: 5'6" x 8'2"  
Calculated Area: 45 sq. ft  
Included: Yes

Heated: Yes  
Finished: Yes  
Enclosed: Yes  
Contiguous: Yes  
Permitted: Yes  
Wet space: Yes  
Addition: No  
Conversion: No



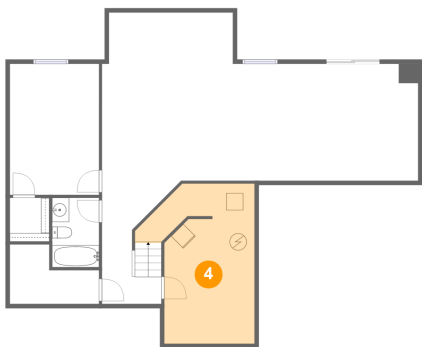
3 Floor 1 - W.I.C.



Max Dimensions: 4'8" x 5'2"  
Calculated Area: 24 sq. ft  
Included: Yes

Heated: Yes  
Finished: Yes  
Enclosed: Yes  
Contiguous: Yes  
Permitted: Yes  
Wet space: No  
Addition: No  
Conversion: No

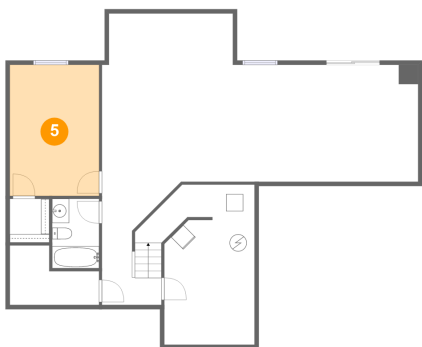
4 Floor 1 - Utility



Max Dimensions: 10'7" x 18'9"  
Calculated Area: 205 sq. ft  
Included: No

Heated: Yes  
Finished: No  
Enclosed: Yes  
Contiguous: Yes  
Permitted: Yes  
Wet space: No  
Addition: No  
Conversion: No

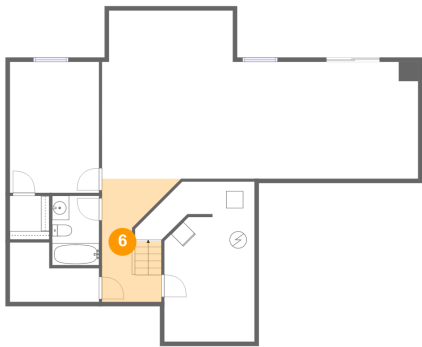
5 Floor 1 - Bedroom



Max Dimensions: 10'5" x 15'4"  
Calculated Area: 161 sq. ft  
Included: Yes

Heated: Yes  
Finished: Yes  
Enclosed: Yes  
Contiguous: Yes  
Permitted: Yes  
Wet space: No  
Addition: No  
Conversion: No

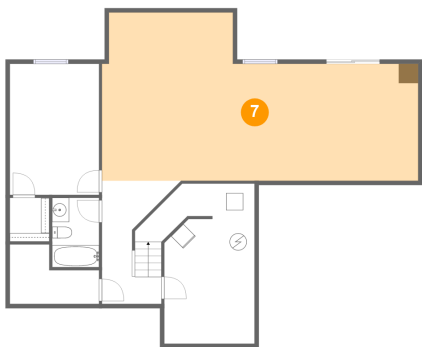
6 Floor 1 - Hall



Max Dimensions: 7'0" x 14'5"  
Calculated Area: 92 sq. ft  
Included: Yes

Heated: Yes  
Finished: Yes  
Enclosed: Yes  
Contiguous: Yes  
Permitted: Yes  
Wet space: No  
Addition: No  
Conversion: No

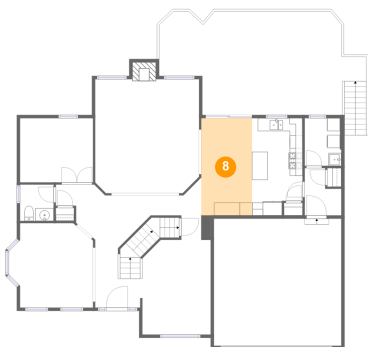
7 Floor 1 - Recreation Room



Max Dimensions: 37'1" x 19'9"  
Calculated Area: 596 sq. ft  
Included: Yes

Heated: Yes  
Finished: Yes  
Enclosed: Yes  
Contiguous: Yes  
Permitted: Yes  
Wet space: No  
Addition: No  
Conversion: No

8 Floor 2 - Breakfast Nook

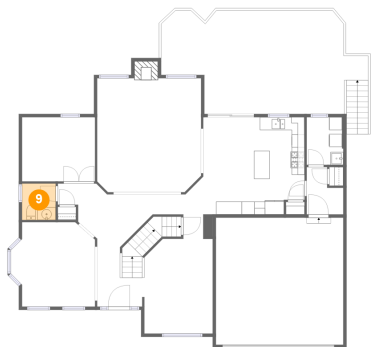


Max Dimensions: 7'11" x 15'0"  
Calculated Area: 119 sq. ft  
Included: Yes

Heated: Yes  
Finished: Yes  
Enclosed: Yes  
Contiguous: Yes  
Permitted: Yes  
Wet space: No  
Addition: No  
Conversion: No

12967 Queen Chapel Road, Dale City, Woodbridge, Prince William County, Virginia, United States, 22193

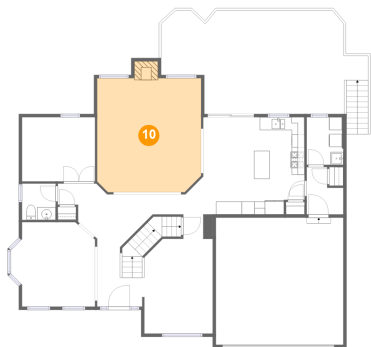
9 Floor 2 - WC



Max Dimensions: 5'3" x 5'8"  
Calculated Area: 29 sq. ft  
Included: Yes

Heated: Yes  
Finished: Yes  
Enclosed: Yes  
Contiguous: Yes  
Permitted: Yes  
Wet space: Yes  
Addition: No  
Conversion: No

10 Floor 2 - Family Room



Max Dimensions: 16'1" x 17'8"  
Calculated Area: 289 sq. ft  
Included: Yes

Heated: Yes  
Finished: Yes  
Enclosed: Yes  
Contiguous: Yes  
Permitted: Yes  
Wet space: No  
Addition: No  
Conversion: No

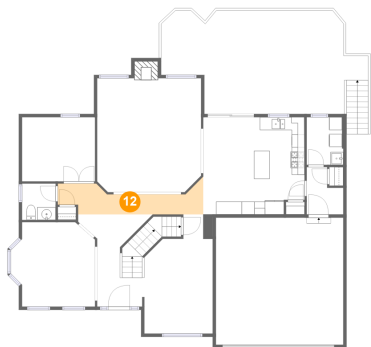
11 Floor 2 - Foyer



Max Dimensions: 11'4" x 14'3"  
Calculated Area: 130 sq. ft  
Included: Yes

Heated: Yes  
Finished: Yes  
Enclosed: Yes  
Contiguous: Yes  
Permitted: Yes  
Wet space: No  
Addition: No  
Conversion: No

12 Floor 2 - Hall



Max Dimensions: 22'7" x 4'9"  
Calculated Area: 81 sq. ft  
Included: Yes

Heated: Yes  
Finished: Yes  
Enclosed: Yes  
Contiguous: Yes  
Permitted: Yes  
Wet space: No  
Addition: No  
Conversion: No

13 Floor 2 - Office



Max Dimensions: 11'4" x 9'11"  
Calculated Area: 112 sq. ft  
Included: Yes

Heated: Yes  
Finished: Yes  
Enclosed: Yes  
Contiguous: Yes  
Permitted: Yes  
Wet space: No  
Addition: No  
Conversion: No

14 Floor 2 - Hall

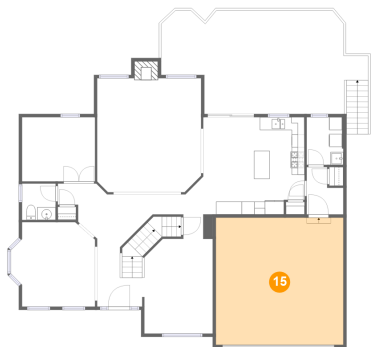


Max Dimensions: 5'8" x 7'4"  
Calculated Area: 34 sq. ft  
Included: Yes

Heated: Yes  
Finished: Yes  
Enclosed: Yes  
Contiguous: Yes  
Permitted: Yes  
Wet space: No  
Addition: No  
Conversion: No

12967 Queen Chapel Road, Dale City, Woodbridge, Prince William County, Virginia, United States, 22193

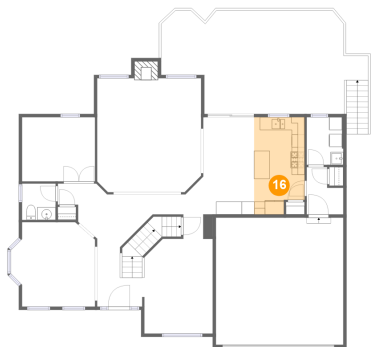
15 Floor 2 - Garage



Max Dimensions: 19'9" x 19'8"  
Calculated Area: 389 sq. ft  
Included: No

Heated: No  
Finished: No  
Enclosed: Yes  
Contiguous: Yes  
Permitted: Yes  
Wet space: No  
Addition: No  
Conversion: No

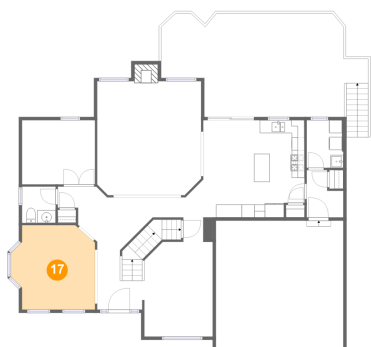
16 Floor 2 - Kitchen



Max Dimensions: 7'10" x 15'1"  
Calculated Area: 110 sq. ft  
Included: Yes

Heated: Yes  
Finished: Yes  
Enclosed: Yes  
Contiguous: Yes  
Permitted: Yes  
Wet space: No  
Addition: No  
Conversion: No

17 Floor 2 - Living Room



Max Dimensions: 13'1" x 13'1"  
Calculated Area: 153 sq. ft  
Included: Yes

Heated: Yes  
Finished: Yes  
Enclosed: Yes  
Contiguous: Yes  
Permitted: Yes  
Wet space: No  
Addition: No  
Conversion: No

18 Floor 2 - Dining Area



Max Dimensions: 10'7" x 18'5"  
Calculated Area: 163 sq. ft  
Included: Yes

Heated: Yes  
Finished: Yes  
Enclosed: Yes  
Contiguous: Yes  
Permitted: Yes  
Wet space: No  
Addition: No  
Conversion: No

19 Floor 2 - Laundry



Max Dimensions: 5'8" x 7'4"  
Calculated Area: 42 sq. ft  
Included: Yes

Heated: Yes  
Finished: Yes  
Enclosed: Yes  
Contiguous: Yes  
Permitted: Yes  
Wet space: No  
Addition: No  
Conversion: No

20 Floor 2 - Deck

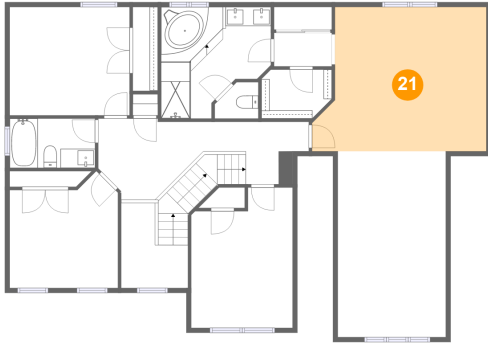


Max Dimensions: 32'1" x 16'0"  
Calculated Area: 448 sq. ft  
Included: No

Heated: No  
Finished: Yes  
Enclosed: No  
Contiguous: Yes  
Permitted: Yes  
Wet space: No  
Addition: No  
Conversion: No

12967 Queen Chapel Road, Dale City, Woodbridge, Prince  
William County, Virginia, United States, 22193

### 21 Floor 3 - Primary Bedroom



Max Dimensions: 18'3" x 15'1"  
Calculated Area: 248 sq. ft  
Included: Yes

Heated: Yes  
Finished: Yes  
Enclosed: Yes  
Contiguous: Yes  
Permitted: Yes  
Wet space: No  
Addition: No  
Conversion: No

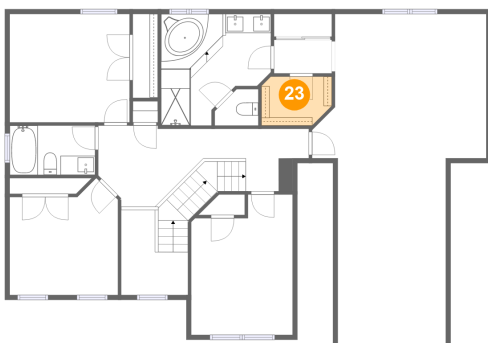
### 22 Floor 3 - WC



Max Dimensions: 4'7" x 3'10"  
Calculated Area: 15 sq. ft  
Included: Yes

Heated: Yes  
Finished: Yes  
Enclosed: Yes  
Contiguous: Yes  
Permitted: Yes  
Wet space: Yes  
Addition: No  
Conversion: No

### 23 Floor 3 - W.I.C.



Max Dimensions: 7'4" x 5'1"  
Calculated Area: 35 sq. ft  
Included: Yes

Heated: Yes  
Finished: Yes  
Enclosed: Yes  
Contiguous: Yes  
Permitted: Yes  
Wet space: No  
Addition: No  
Conversion: No

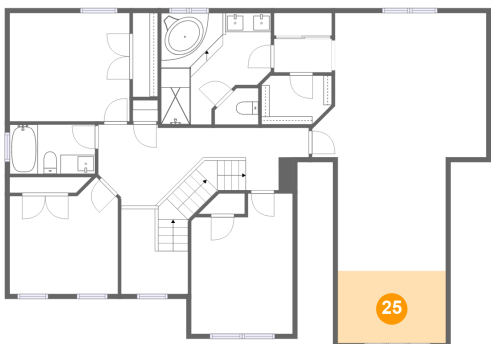
24 Floor 3 - Bedroom



Max Dimensions: 10'7" x 14'8"  
Calculated Area: 141 sq. ft  
Included: Yes

Heated: Yes  
Finished: Yes  
Enclosed: Yes  
Contiguous: Yes  
Permitted: Yes  
Wet space: No  
Addition: No  
Conversion: No

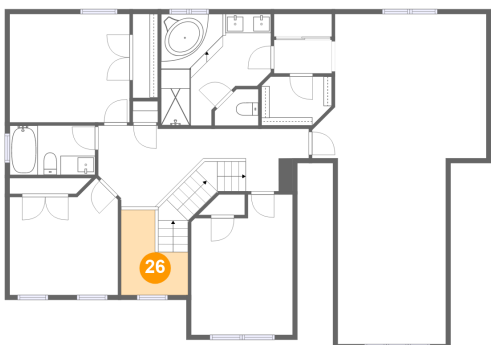
25 Floor 3 - Exercise Room



Max Dimensions: 11'3" x 7'7"  
Calculated Area: 85 sq. ft  
Included: Yes

Heated: Yes  
Finished: Yes  
Enclosed: Yes  
Contiguous: Yes  
Permitted: Yes  
Wet space: No  
Addition: No  
Conversion: No

26 Floor 3 - Open To Below

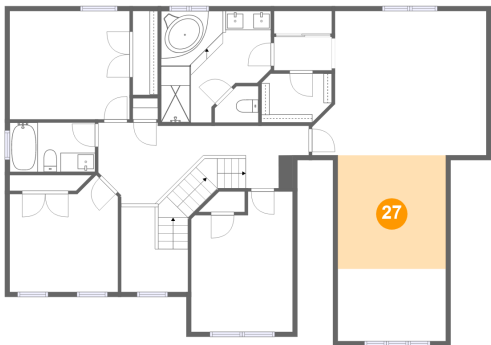


Max Dimensions: 7'0" x 8'11"  
Calculated Area: 47 sq. ft  
Included: No

Heated: No  
Finished: No  
Enclosed: No  
Contiguous: Yes  
Permitted: No  
Wet space: No  
Addition: No  
Conversion: No



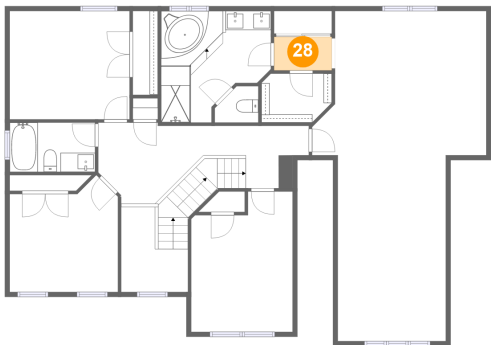
27 Floor 3 - Sitting Room



Max Dimensions: 11'3" x 11'10"  
Calculated Area: 134 sq. ft  
Included: Yes

Heated: Yes  
Finished: Yes  
Enclosed: Yes  
Contiguous: Yes  
Permitted: Yes  
Wet space: No  
Addition: No  
Conversion: No

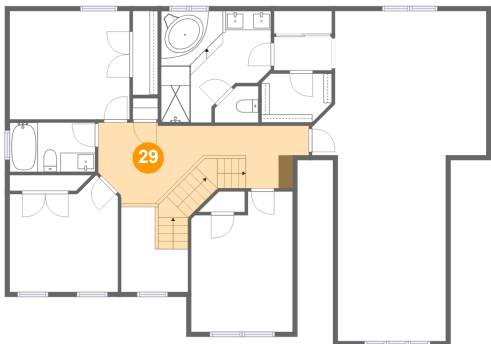
28 Floor 3 - Hall



Max Dimensions: 6'0" x 3'6"  
Calculated Area: 21 sq. ft  
Included: Yes

Heated: Yes  
Finished: Yes  
Enclosed: Yes  
Contiguous: Yes  
Permitted: Yes  
Wet space: No  
Addition: No  
Conversion: No

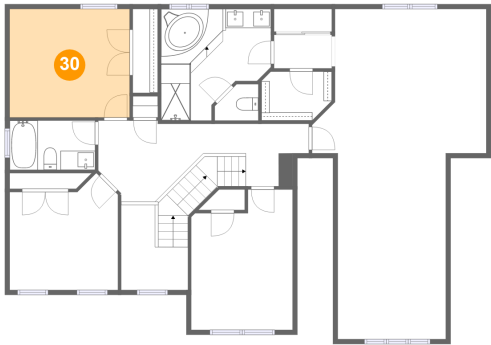
29 Floor 3 - Hall



Max Dimensions: 22'0" x 8'6"  
Calculated Area: 172 sq. ft  
Included: Yes

Heated: Yes  
Finished: Yes  
Enclosed: Yes  
Contiguous: Yes  
Permitted: Yes  
Wet space: No  
Addition: No  
Conversion: No

30 Floor 3 - Bedroom



Max Dimensions: 12'6" x 11'3"  
Calculated Area: 142 sq. ft  
Included: Yes

Heated: Yes  
Finished: Yes  
Enclosed: Yes  
Contiguous: Yes  
Permitted: Yes  
Wet space: No  
Addition: No  
Conversion: No

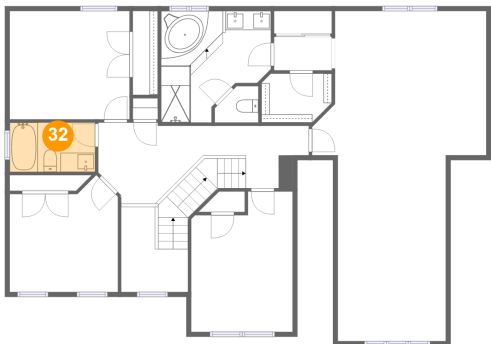
31 Floor 3 - Bedroom



Max Dimensions: 11'3" x 12'2"  
Calculated Area: 120 sq. ft  
Included: Yes

Heated: Yes  
Finished: Yes  
Enclosed: Yes  
Contiguous: Yes  
Permitted: Yes  
Wet space: No  
Addition: No  
Conversion: No

32 Floor 3 - Bath



Max Dimensions: 8'11" x 5'2"  
Calculated Area: 46 sq. ft  
Included: Yes

Heated: Yes  
Finished: Yes  
Enclosed: Yes  
Contiguous: Yes  
Permitted: Yes  
Wet space: Yes  
Addition: No  
Conversion: No

12967 Queen Chapel Road, Dale City, Woodbridge, Prince  
William County, Virginia, United States, 22193

**33** Floor 3 - Primary Bath



Max Dimensions: 11'6" x 11'8"  
Calculated Area: 110 sq. ft  
Included: Yes

Heated: Yes  
Finished: Yes  
Enclosed: Yes  
Contiguous: Yes  
Permitted: Yes  
Wet space: Yes  
Addition: No  
Conversion: No