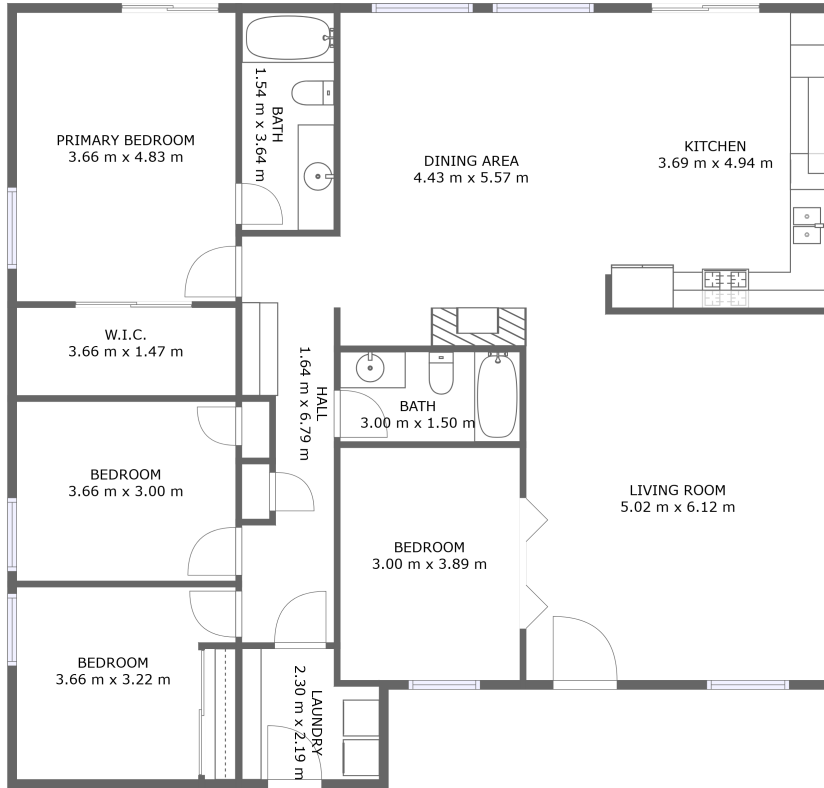


43223 33rd Street East, Lancaster, Los Angeles County, California, United States, 93535

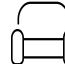



FLOOR 1

Property Summary

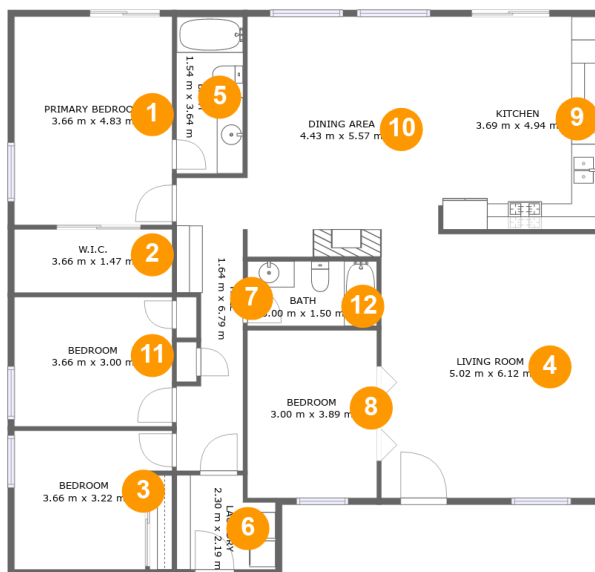
 **0** garages  **4** bedrooms  **2** bathrooms  **0** half baths

 **1** floors

 **169** Gross Living Area sqm

 **169** total sqm

43223 33rd Street East, Lancaster, Los Angeles County, California, United States, 93535



Room Dimensions

Floor 1

Total sqm: 169

Living area: 169

#	Room name	Dimensions	Area (sqm)	Counted as Living Area
1	Primary Bedroom	3.66 m x 4.83 m	18 m ²	Yes
2	W.i.c.	3.66 m x 1.47 m	5 m ²	Yes
3	Bedroom	3.66 m x 3.22 m	10 m ²	Yes
4	Living Room	5.02 m x 6.12 m	30 m ²	Yes
5	Bath	1.54 m x 3.64 m	6 m ²	Yes
6	Laundry	2.30 m x 2.19 m	5 m ²	Yes
7	Hall	1.64 m x 6.79 m	9 m ²	Yes
8	Bedroom	3.00 m x 3.89 m	12 m ²	Yes
9	Kitchen	3.69 m x 4.94 m	18 m ²	Yes
10	Dining Area	4.43 m x 5.57 m	24 m ²	Yes
11	Bedroom	3.66 m x 3.00 m	11 m ²	Yes

Scan captured on Wed, 12 Jun 2024 22:29:12 GMT

Information is calculated by CubiCasa technology; deemed highly reliable but not guaranteed.

**43223 33rd Street East, Lancaster, Los Angeles
County, California, United States, 93535**

#	Room name	Dimensions	Area (sqm)	Counted as Living Area
12	Bath	3.00 m x 1.50 m	5 m2	Yes

43223 33rd Street East, Lancaster, Los Angeles County, California, United States, 93535

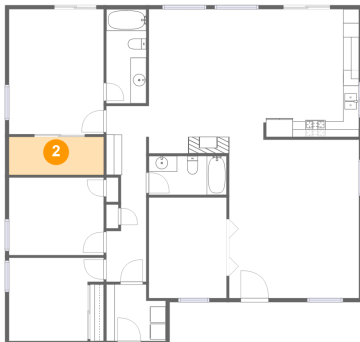
1 Floor 1 - Primary Bedroom



Dimensions: 3.66 m x 4.83 m
Area: 18 m²
Counted as Living Area: Yes

Heated: Yes
Finished: Yes
Enclosed: Yes
Contiguous: Yes
Permitted: Yes
Wet Space: No
Addition: No
Conversion: No

2 Floor 1 - W.i.c.



Dimensions: 3.66 m x 1.47 m
Area: 5 m²
Counted as Living Area: Yes

Heated: Yes
Finished: Yes
Enclosed: Yes
Contiguous: Yes
Permitted: Yes
Wet Space: No
Addition: No
Conversion: No

43223 33rd Street East, Lancaster, Los Angeles County, California, United States, 93535

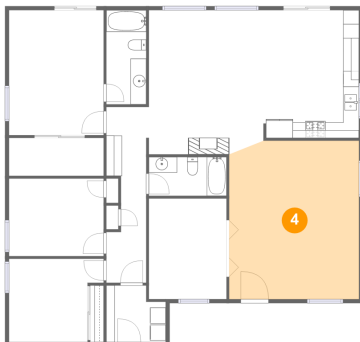
3 Floor 1 - Bedroom



Dimensions: 3.66 m x 3.22 m
Area: 10 m²
Counted as Living Area: Yes

Heated: Yes
Finished: Yes
Enclosed: Yes
Contiguous: Yes
Permitted: Yes
Wet Space: No
Addition: No
Conversion: No

4 Floor 1 - Living Room



Dimensions: 5.02 m x 6.12 m
Area: 30 m²
Counted as Living Area: Yes

Heated: Yes
Finished: Yes
Enclosed: Yes
Contiguous: Yes
Permitted: Yes
Wet Space: No
Addition: No
Conversion: No

5 Floor 1 - Bath



Dimensions: 1.54 m x 3.64 m
Area: 6 m²
Counted as Living Area: Yes

Heated: Yes
Finished: Yes
Enclosed: Yes
Contiguous: Yes
Permitted: Yes
Wet Space: Yes
Addition: No
Conversion: No

43223 33rd Street East, Lancaster, Los Angeles County, California, United States, 93535

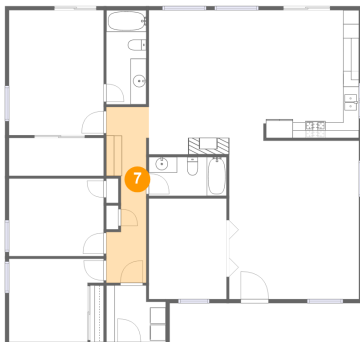
6 Floor 1 - Laundry



Dimensions: 2.30 m x 2.19 m
Area: 5 m²
Counted as Living Area: Yes

Heated: Yes
Finished: Yes
Enclosed: Yes
Contiguous: Yes
Permitted: Yes
Wet Space: No
Addition: No
Conversion: No

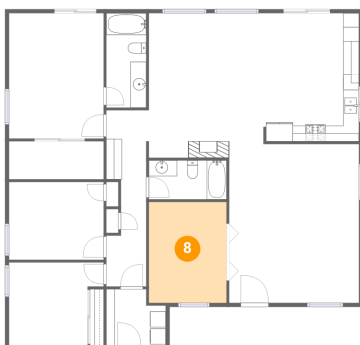
7 Floor 1 - Hall



Dimensions: 1.64 m x 6.79 m
Area: 9 m²
Counted as Living Area: Yes

Heated: Yes
Finished: Yes
Enclosed: Yes
Contiguous: Yes
Permitted: Yes
Wet Space: No
Addition: No
Conversion: No

8 Floor 1 - Bedroom

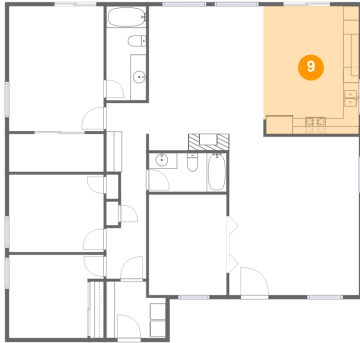


Dimensions: 3.00 m x 3.89 m
Area: 12 m²
Counted as Living Area: Yes

Heated: Yes
Finished: Yes
Enclosed: Yes
Contiguous: Yes
Permitted: Yes
Wet Space: No
Addition: No
Conversion: No

43223 33rd Street East, Lancaster, Los Angeles County, California, United States, 93535

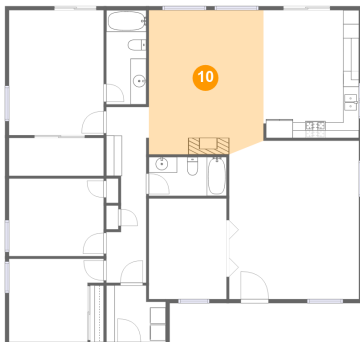
9 Floor 1 - Kitchen



Dimensions: 3.69 m x 4.94 m
Area: 18 m²
Counted as Living Area: Yes

Heated: Yes
Finished: Yes
Enclosed: Yes
Contiguous: Yes
Permitted: Yes
Wet Space: No
Addition: No
Conversion: No

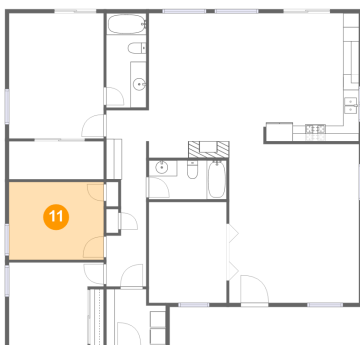
10 Floor 1 - Dining Area



Dimensions: 4.43 m x 5.57 m
Area: 24 m²
Counted as Living Area: Yes

Heated: Yes
Finished: Yes
Enclosed: Yes
Contiguous: Yes
Permitted: Yes
Wet Space: No
Addition: No
Conversion: No

11 Floor 1 - Bedroom

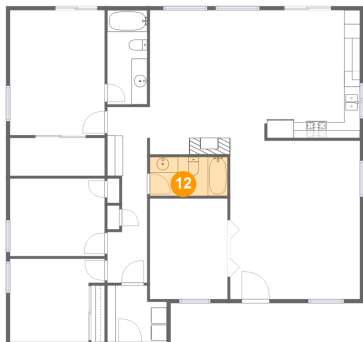


Dimensions: 3.66 m x 3.00 m
Area: 11 m²
Counted as Living Area: Yes

Heated: Yes
Finished: Yes
Enclosed: Yes
Contiguous: Yes
Permitted: Yes
Wet Space: No
Addition: No
Conversion: No

43223 33rd Street East, Lancaster, Los Angeles County, California, United States, 93535

12 Floor 1 - Bath



Dimensions: 3.00 m x 1.50 m
Area: 5 m²
Counted as Living Area: Yes

Heated: Yes
Finished: Yes
Enclosed: Yes
Contiguous: Yes
Permitted: Yes
Wet Space: Yes
Addition: No
Conversion: No