

9880 149b Street

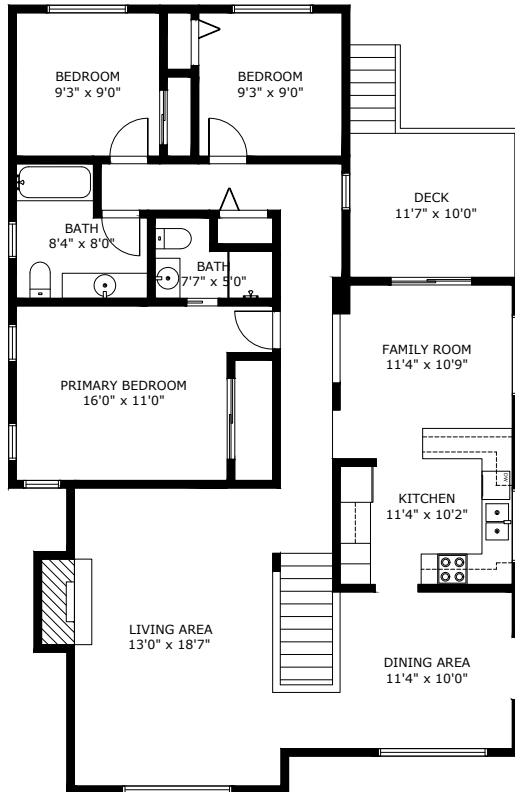
Surrey BC V3R 8H4

Lower Level Area: 1,130 SQ.FT.
 Upper Level Area: 1,340 SQ.FT.
Total Area 2,470 SQ.FT.

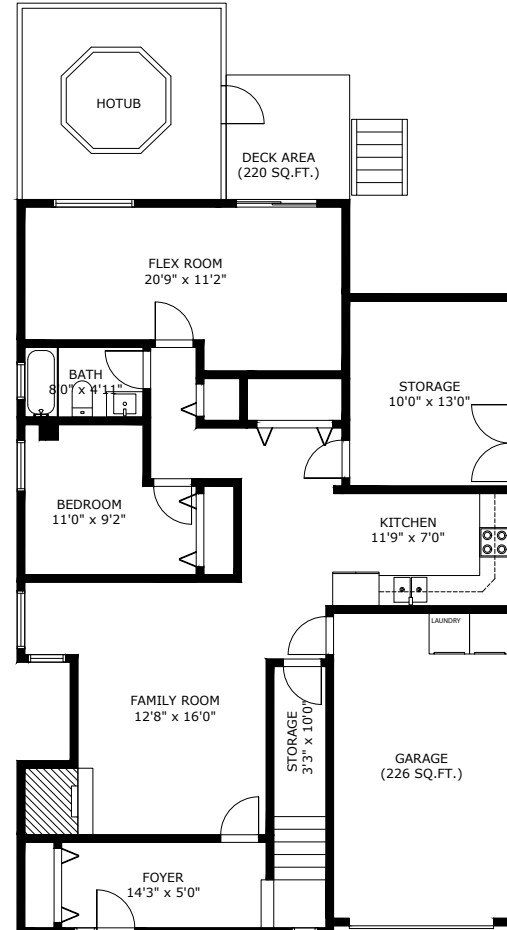
Garage Area: 226 SQ.FT.



KELVIN K. LUK
 PERSONAL REAL ESTATE CORPORATION



Upper Level Area:
 Ceiling Height: 8'0"



Lower Level Area:
 Ceiling Height: 8'0"

9880 149B ST SURREY BC V3R 8H4

Measurements are approximate and may not be to scale. Gross measurements as per BCASSESSMENT
 The floor plan illustration is not suitable for construction/architectural purposes.
 This communication is not intended to cause or induce breach of an existing agency agreement



Professionally measured by 3D Immersive Marketing Ltd.

Lead Floor Planner: *Sue Alexander*
 Quality Assurance: *Dianne Graham*