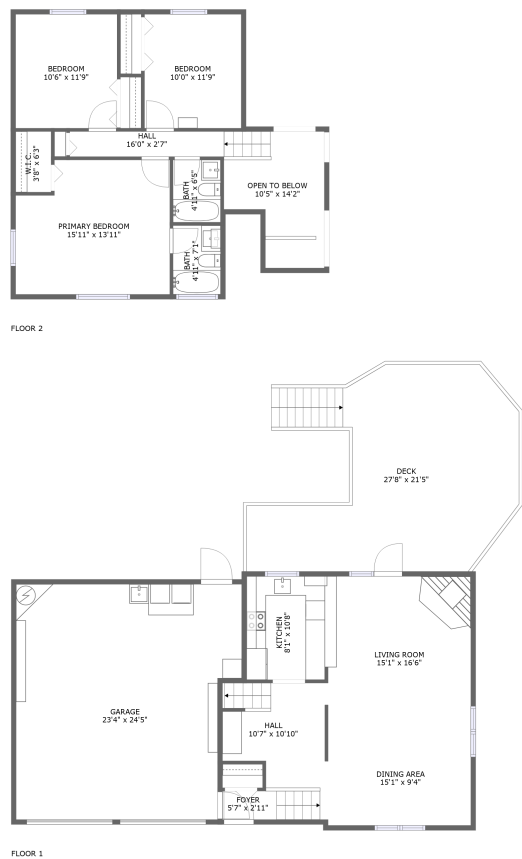




Home report


11459 61st Street, Pinellas Park, Pinellas County, Florida, United States, 33782




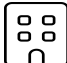
Property summary


 **1** Garages


 **3** Bedrooms

 **2** Bathrooms

 **0** Half baths

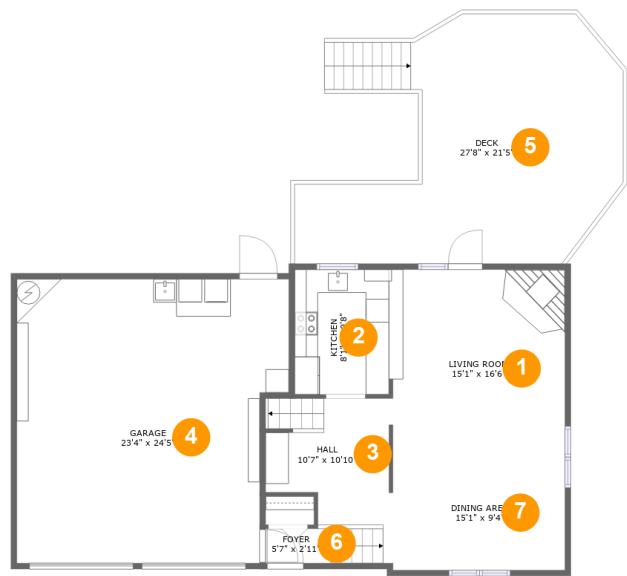
 **2** Floors

 **1,386** Gross living area sqft

 **2,493** Total sqft

Home report

11459 61st Street, Pinellas Park, Pinellas County, Florida, United States, 33782



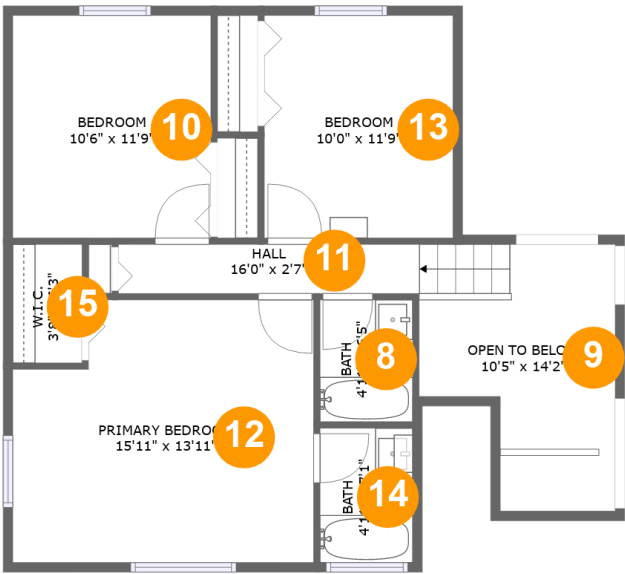
Room dimensions

Floor 1 Total sqft: 1662    Living area: 680

#		Dimensions	sqft	Counted as living area
1	Living Room	15'1" x 16'6"	247 sq. ft	Yes
2	Kitchen	8'1" x 10'8"	87 sq. ft	Yes
3	Hall	10'7" x 10'10"	101 sq. ft	Yes
4	Garage	23'4" x 24'5"	531 sq. ft	No
5	Deck	27'8" x 21'5"	416 sq. ft	No
6	Foyer	5'7" x 2'11"	33 sq. ft	Yes
7	Dining Area	15'1" x 9'4"	139 sq. ft	Yes

Home report

11459 61st Street, Pinellas Park, Pinellas County, Florida, United States, 33782



Room dimensions

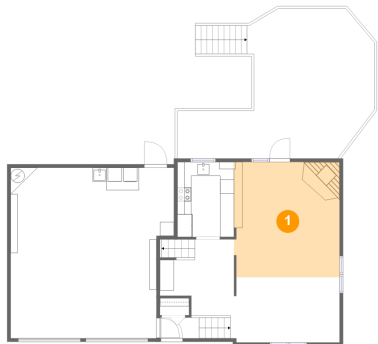
Floor 2

Total sqft: 831    Living area: 706

#		Dimensions	sqft	Counted as living area
8	Bath	4'11" x 6'5"	32 sq. ft	Yes
9	Open To Below	10'5" x 14'2"	106 sq. ft	No
10	Bedroom	10'6" x 11'9"	124 sq. ft	Yes
11	Hall	16'0" x 2'7"	56 sq. ft	Yes
12	Primary Bedroom	15'11" x 13'11"	207 sq. ft	Yes
13	Bedroom	10'0" x 11'9"	118 sq. ft	Yes
14	Bath	4'11" x 7'1"	35 sq. ft	Yes
15	W.I.C.	3'8" x 6'3"	23 sq. ft	Yes

11459 61st Street, Pinellas Park, Pinellas County, Florida, United States, 33782

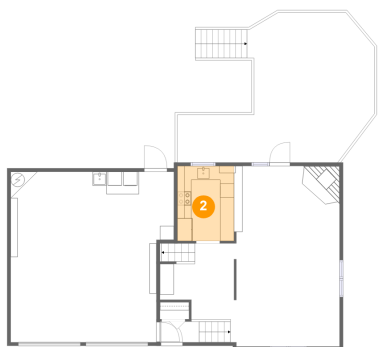
1 Floor 1 - Living Room



Dimensions: 15'1" x 16'6"  
Area: 247 sq. ft  
Counted as living area: Yes

Heated: Yes  
Finished: Yes  
Enclosed: Yes  
Contiguous: Yes  
Permitted: Yes  
Wet space: No  
Addition: No  
Conversion: No

2 Floor 1 - Kitchen

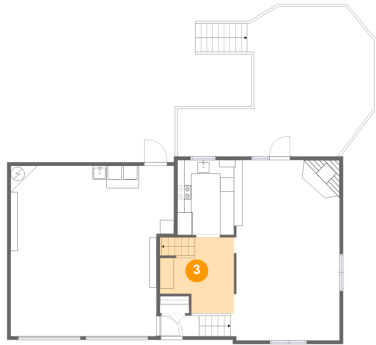


Dimensions: 8'1" x 10'8"  
Area: 87 sq. ft  
Counted as living area: Yes

Heated: Yes  
Finished: Yes  
Enclosed: Yes  
Contiguous: Yes  
Permitted: Yes  
Wet space: No  
Addition: No  
Conversion: No

11459 61st Street, Pinellas Park, Pinellas County, Florida, United States, 33782

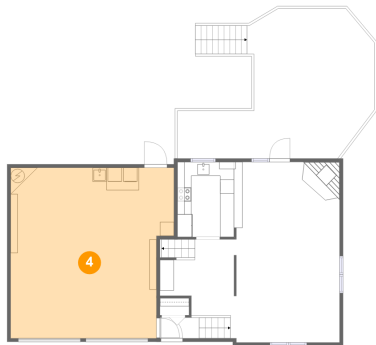
### 3 Floor 1 - Hall



Dimensions: 10'7" x 10'10"  
Area: 101 sq. ft  
Counted as living area: Yes

Heated: Yes  
Finished: Yes  
Enclosed: Yes  
Contiguous: Yes  
Permitted: Yes  
Wet space: No  
Addition: No  
Conversion: No

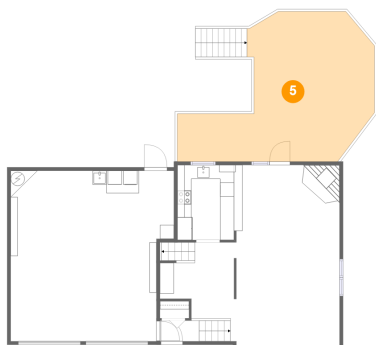
### 4 Floor 1 - Garage



Dimensions: 23'4" x 24'5"  
Area: 531 sq. ft  
Counted as living area: No

Heated: No  
Finished: No  
Enclosed: Yes  
Contiguous: Yes  
Permitted: Yes  
Wet space: No  
Addition: No  
Conversion: No

### 5 Floor 1 - Deck

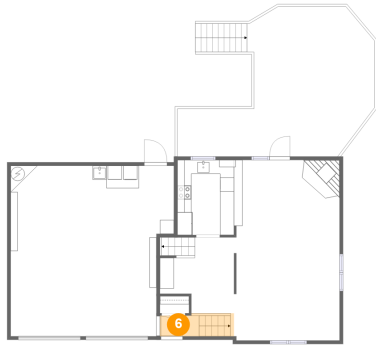


Dimensions: 27'8" x 21'5"  
Area: 416 sq. ft  
Counted as living area: No

Heated: No  
Finished: Yes  
Enclosed: No  
Contiguous: Yes  
Permitted: Yes  
Wet space: No  
Addition: No  
Conversion: No

11459 61st Street, Pinellas Park, Pinellas County, Florida, United States, 33782

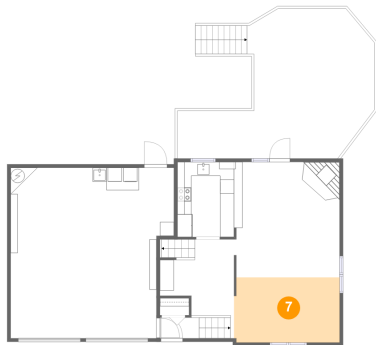
## 6 Floor 1 - Foyer



Dimensions: 5'7" x 2'11"  
Area: 33 sq. ft  
Counted as living area: Yes

Heated: Yes  
Finished: Yes  
Enclosed: Yes  
Contiguous: Yes  
Permitted: Yes  
Wet space: No  
Addition: No  
Conversion: No

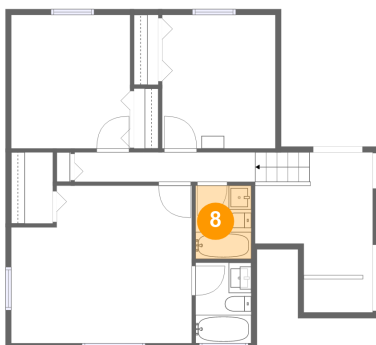
## 7 Floor 1 - Dining Area



Dimensions: 15'1" x 9'4"  
Area: 139 sq. ft  
Counted as living area: Yes

Heated: Yes  
Finished: Yes  
Enclosed: Yes  
Contiguous: Yes  
Permitted: Yes  
Wet space: No  
Addition: No  
Conversion: No

## 8 Floor 2 - Bath



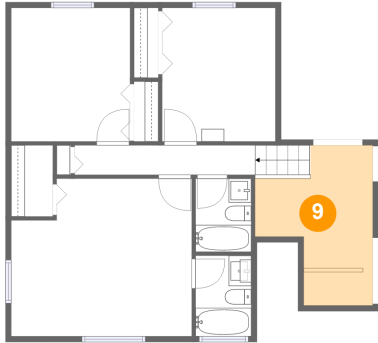
Dimensions: 4'11" x 6'5"  
Area: 32 sq. ft  
Counted as living area: Yes

Heated: Yes  
Finished: Yes  
Enclosed: Yes  
Contiguous: Yes  
Permitted: Yes  
Wet space: Yes  
Addition: No  
Conversion: No

## Home report

11459 61st Street, Pinellas Park, Pinellas County, Florida, United States, 33782

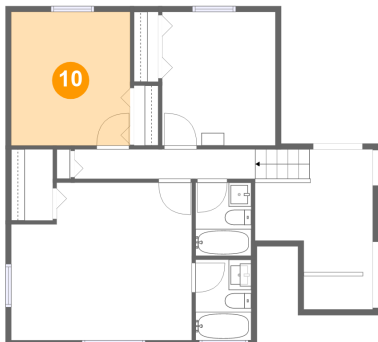
### 9 Floor 2 - Open To Below



Dimensions: 10'5" x 14'2"  
Area: 106 sq. ft  
Counted as living area: No

Heated: No  
Finished: No  
Enclosed: No  
Contiguous: Yes  
Permitted: No  
Wet space: No  
Addition: No  
Conversion: No

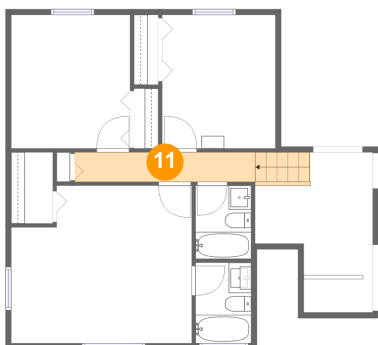
### 10 Floor 2 - Bedroom



Dimensions: 10'6" x 11'9"  
Area: 124 sq. ft  
Counted as living area: Yes

Heated: Yes  
Finished: Yes  
Enclosed: Yes  
Contiguous: Yes  
Permitted: Yes  
Wet space: No  
Addition: No  
Conversion: No

### 11 Floor 2 - Hall

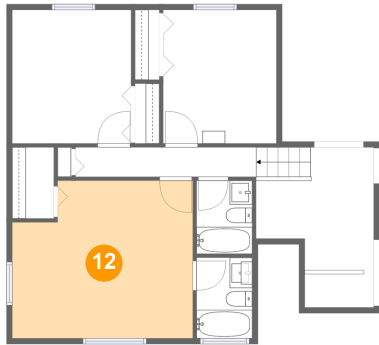


Dimensions: 16'0" x 2'7"  
Area: 56 sq. ft  
Counted as living area: Yes

Heated: Yes  
Finished: Yes  
Enclosed: Yes  
Contiguous: Yes  
Permitted: Yes  
Wet space: No  
Addition: No  
Conversion: No

11459 61st Street, Pinellas Park, Pinellas County, Florida, United States, 33782

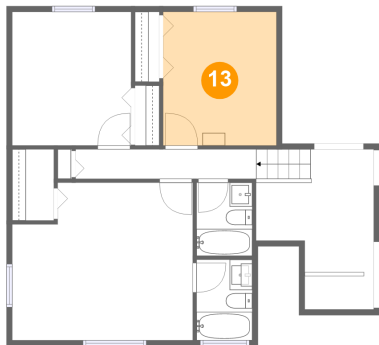
## 12 Floor 2 - Primary Bedroom



Dimensions: 15'11" x 13'11"  
Area: 207 sq. ft  
Counted as living area: Yes

Heated: Yes  
Finished: Yes  
Enclosed: Yes  
Contiguous: Yes  
Permitted: Yes  
Wet space: No  
Addition: No  
Conversion: No

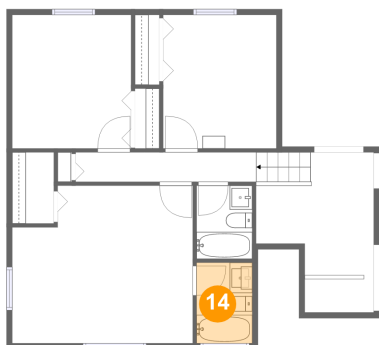
## 13 Floor 2 - Bedroom



Dimensions: 10'0" x 11'9"  
Area: 118 sq. ft  
Counted as living area: Yes

Heated: Yes  
Finished: Yes  
Enclosed: Yes  
Contiguous: Yes  
Permitted: Yes  
Wet space: No  
Addition: No  
Conversion: No

## 14 Floor 2 - Bath



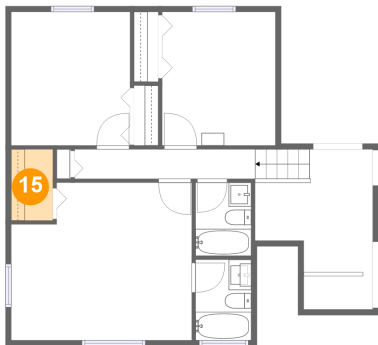
Dimensions: 4'11" x 7'1"  
Area: 35 sq. ft  
Counted as living area: Yes

Heated: Yes  
Finished: Yes  
Enclosed: Yes  
Contiguous: Yes  
Permitted: Yes  
Wet space: Yes  
Addition: No  
Conversion: No



11459 61st Street, Pinellas Park, Pinellas County, Florida, United States, 33782

15 Floor 2 - W.I.C.



Dimensions: 3'8" x 6'3"  
Area: 23 sq. ft  
Counted as living area: Yes

Heated: Yes  
Finished: Yes  
Enclosed: Yes  
Contiguous: Yes  
Permitted: Yes  
Wet space: No  
Addition: No  
Conversion: No