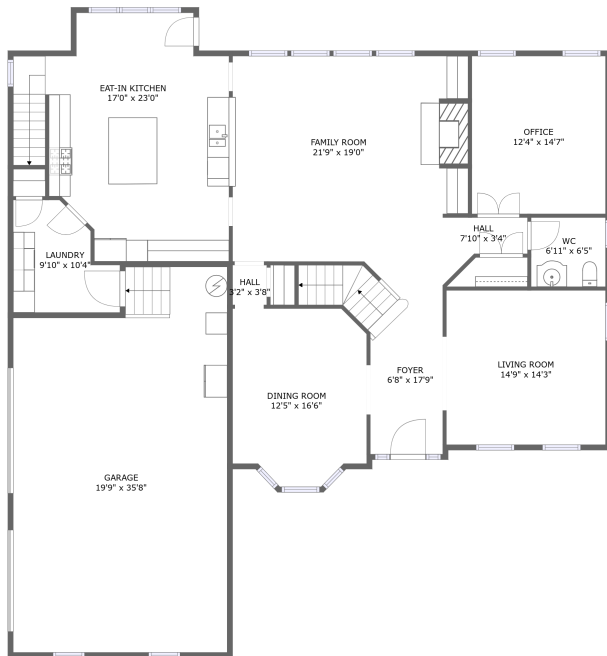
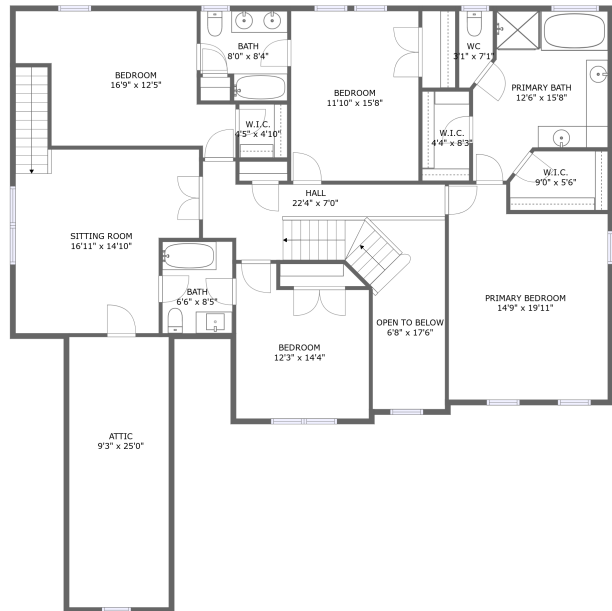


2000 Steeplechase Pkwy, Goochland, VA, US



FLOOR 1



FLOOR 2

Property summary


 **1** Garages

 **4** Bedrooms

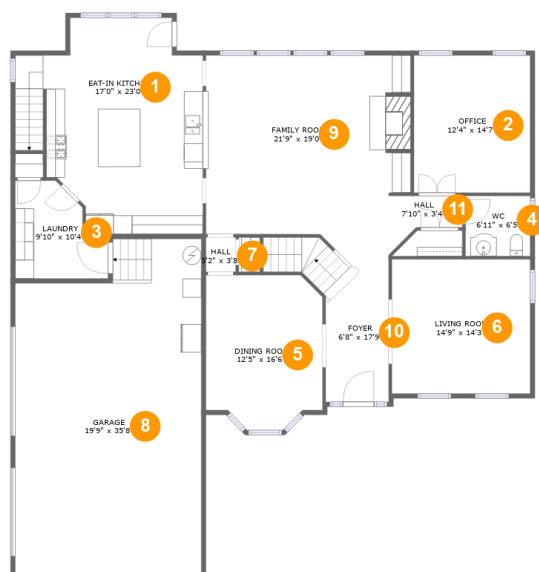
 **3** Bathrooms

 **1** Half baths

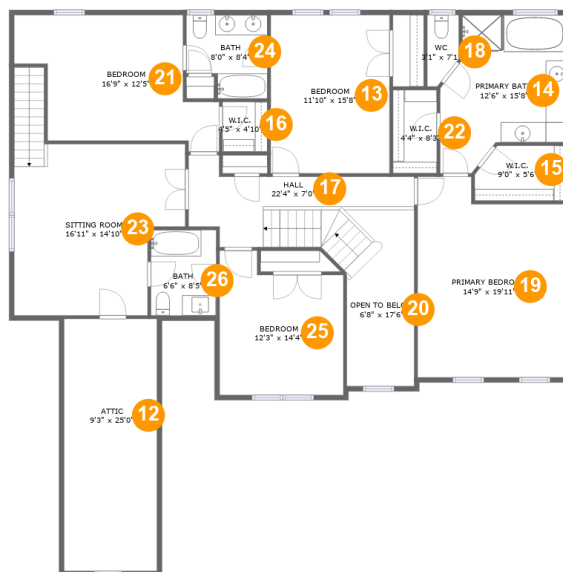
 **2** Floors

 **3,712** Gross living area sqft

 **4,772** Total sqft

2000 Steeplechase Pkwy, Goochland, VA, US**Room dimensions****Floor 1****Total sqft: 2549 Living area: 1858**

#		Dimensions	sqft	Counted as living area
1	Eat-in Kitchen	17'0" x 23'0"	370 sq. ft	Yes
2	Office	12'4" x 14'7"	180 sq. ft	Yes
3	Laundry	9'10" x 10'4"	82 sq. ft	Yes
4	WC	6'11" x 6'5"	44 sq. ft	Yes
5	Dining Room	12'5" x 16'6"	188 sq. ft	Yes
6	Living Room	14'9" x 14'3"	210 sq. ft	Yes
7	Hall	3'2" x 3'8"	12 sq. ft	Yes
8	Garage	19'9" x 35'8"	656 sq. ft	No
9	Family Room	21'9" x 19'0"	405 sq. ft	Yes
10	Foyer	6'8" x 17'9"	148 sq. ft	Yes
11	Hall	7'10" x 3'4"	30 sq. ft	Yes

2000 Steeplechase Pkwy, Goochland, VA, US**Room dimensions**

Floor 2

Total sqft: 2223 Living area: 1854

#		Dimensions	sqft	Counted as living area
12	Attic	9'3" x 25'0"	230 sq. ft	No
13	Bedroom	11'10" x 15'8"	185 sq. ft	Yes
14	Primary Bath	12'6" x 15'8"	158 sq. ft	Yes
15	W.I.C.	9'0" x 5'6"	46 sq. ft	Yes
16	W.I.C.	4'5" x 4'10"	22 sq. ft	Yes
17	Hall	22'4" x 7'0"	148 sq. ft	Yes
18	WC	3'1" x 7'1"	19 sq. ft	Yes
19	Primary Bedroom	14'9" x 19'11"	267 sq. ft	Yes
20	Open To Below	6'8" x 17'6"	105 sq. ft	No
21	Bedroom	16'9" x 12'5"	201 sq. ft	Yes
22	W.I.C.	4'4" x 8'3"	36 sq. ft	Yes

Scan captured on Fri, 07 Feb 2025 18:55:13 GMT

Information is calculated by Cubicasa technology deemed highly reliable but not guaranteed.

2000 Steeplechase Pkwy, Goochland, VA, US

#		Dimensions	sqft	Counted as living area
23	Sitting Room	16'11" x 14'10"	279 sq. ft	Yes
24	Bath	8'0" x 8'4"	59 sq. ft	Yes
25	Bedroom	12'3" x 14'4"	155 sq. ft	Yes
26	Bath	6'6" x 8'5"	55 sq. ft	Yes

2000 Steeplechase Pkwy, Goochland, VA, US

1 Floor 1 - Eat-in Kitchen



Dimensions: 17'0" x 23'0"
Area: 370 sq. ft
Counted as living area: Yes

Heated: Yes
Finished: Yes
Enclosed: Yes
Contiguous: Yes
Permitted: Yes
Wet space: No
Addition: No
Conversion: No

2 Floor 1 - Office



Dimensions: 12'4" x 14'7"
Area: 180 sq. ft
Counted as living area: Yes

Heated: Yes
Finished: Yes
Enclosed: Yes
Contiguous: Yes
Permitted: Yes
Wet space: No
Addition: No
Conversion: No

2000 Steeplechase Pkwy, Goochland, VA, US

3 Floor 1 - Laundry



Dimensions: 9'10" x 10'4"
Area: 82 sq. ft
Counted as living area: Yes

Heated: Yes
Finished: Yes
Enclosed: Yes
Contiguous: Yes
Permitted: Yes
Wet space: No
Addition: No
Conversion: No

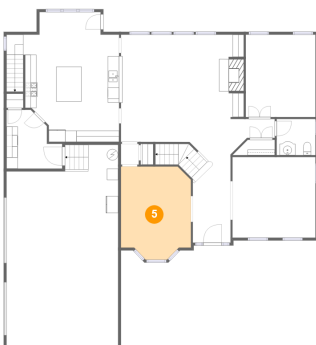
4 Floor 1 - WC



Dimensions: 6'11" x 6'5"
Area: 44 sq. ft
Counted as living area: Yes

Heated: Yes
Finished: Yes
Enclosed: Yes
Contiguous: Yes
Permitted: Yes
Wet space: Yes
Addition: No
Conversion: No

5 Floor 1 - Dining Room

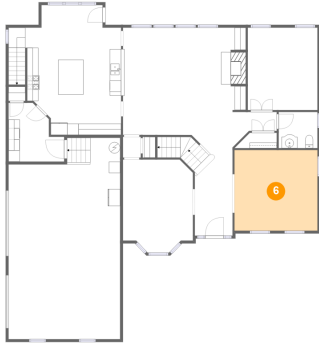


Dimensions: 12'5" x 16'6"
Area: 188 sq. ft
Counted as living area: Yes

Heated: Yes
Finished: Yes
Enclosed: Yes
Contiguous: Yes
Permitted: Yes
Wet space: No
Addition: No
Conversion: No

2000 Steeplechase Pkwy, Goochland, VA, US

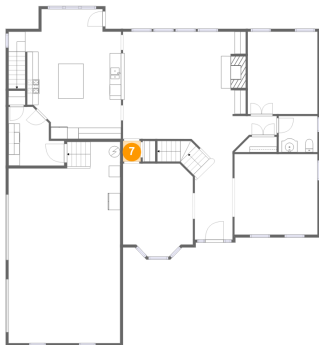
6 Floor 1 - Living Room



Dimensions: 14'9" x 14'3"
Area: 210 sq. ft
Counted as living area: Yes

Heated: Yes
Finished: Yes
Enclosed: Yes
Contiguous: Yes
Permitted: Yes
Wet space: No
Addition: No
Conversion: No

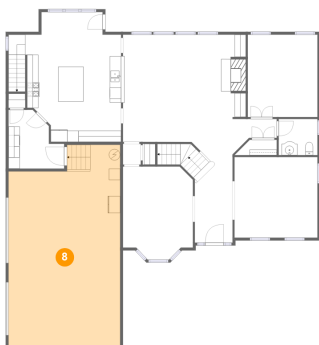
7 Floor 1 - Hall



Dimensions: 3'2" x 3'8"
Area: 12 sq. ft
Counted as living area: Yes

Heated: Yes
Finished: Yes
Enclosed: Yes
Contiguous: Yes
Permitted: Yes
Wet space: No
Addition: No
Conversion: No

8 Floor 1 - Garage

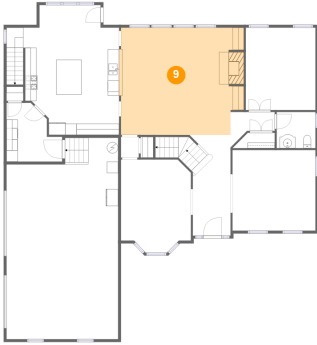


Dimensions: 19'9" x 35'8"
Area: 656 sq. ft
Counted as living area: No

Heated: No
Finished: No
Enclosed: Yes
Contiguous: Yes
Permitted: Yes
Wet space: No
Addition: No
Conversion: No

2000 Steeplechase Pkwy, Goochland, VA, US

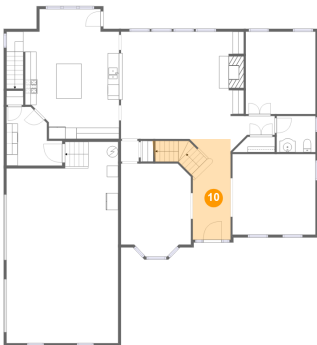
9 Floor 1 - Family Room



Dimensions: 21'9" x 19'0"
Area: 405 sq. ft
Counted as living area: Yes

Heated: Yes
Finished: Yes
Enclosed: Yes
Contiguous: Yes
Permitted: Yes
Wet space: No
Addition: No
Conversion: No

10 Floor 1 - Foyer



Dimensions: 6'8" x 17'9"
Area: 148 sq. ft
Counted as living area: Yes

Heated: Yes
Finished: Yes
Enclosed: Yes
Contiguous: Yes
Permitted: Yes
Wet space: No
Addition: No
Conversion: No

11 Floor 1 - Hall

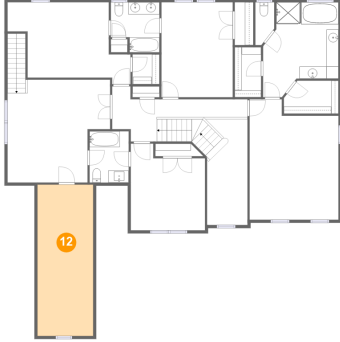


Dimensions: 7'10" x 3'4"
Area: 30 sq. ft
Counted as living area: Yes

Heated: Yes
Finished: Yes
Enclosed: Yes
Contiguous: Yes
Permitted: Yes
Wet space: No
Addition: No
Conversion: No

2000 Steeplechase Pkwy, Goochland, VA, US

12 Floor 2 - Attic



Dimensions: 9'3" x 25'0"
Area: 230 sq. ft
Counted as living area: No

Heated: No
Finished: No
Enclosed: Yes
Contiguous: Yes
Permitted: Yes
Wet space: No
Addition: No
Conversion: No

13 Floor 2 - Bedroom



Dimensions: 11'10" x 15'8"
Area: 185 sq. ft
Counted as living area: Yes

Heated: Yes
Finished: Yes
Enclosed: Yes
Contiguous: Yes
Permitted: Yes
Wet space: No
Addition: No
Conversion: No

14 Floor 2 - Primary Bath

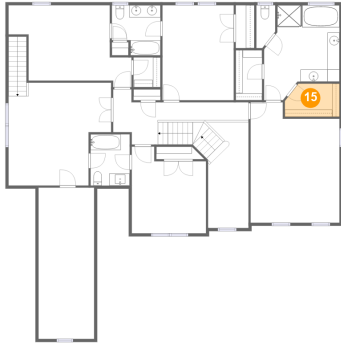


Dimensions: 12'6" x 15'8"
Area: 158 sq. ft
Counted as living area: Yes

Heated: Yes
Finished: Yes
Enclosed: Yes
Contiguous: Yes
Permitted: Yes
Wet space: Yes
Addition: No
Conversion: No

2000 Steeplechase Pkwy, Goochland, VA, US

15 Floor 2 - W.I.C.



Dimensions: 9'0" x 5'6"
Area: 46 sq. ft
Counted as living area: Yes

Heated: Yes
Finished: Yes
Enclosed: Yes
Contiguous: Yes
Permitted: Yes
Wet space: No
Addition: No
Conversion: No

16 Floor 2 - W.I.C.



Dimensions: 4'5" x 4'10"
Area: 22 sq. ft
Counted as living area: Yes

Heated: Yes
Finished: Yes
Enclosed: Yes
Contiguous: Yes
Permitted: Yes
Wet space: No
Addition: No
Conversion: No

17 Floor 2 - Hall



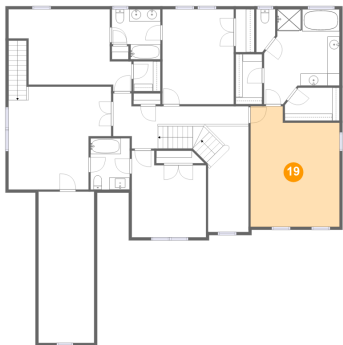
Dimensions: 22'4" x 7'0"
Area: 148 sq. ft
Counted as living area: Yes

Heated: Yes
Finished: Yes
Enclosed: Yes
Contiguous: Yes
Permitted: Yes
Wet space: No
Addition: No
Conversion: No

2000 Steeplechase Pkwy, Goochland, VA, US**18 Floor 2 - WC**

Dimensions: 3'1" x 7'1"
Area: 19 sq. ft
Counted as living area: Yes

Heated: Yes
Finished: Yes
Enclosed: Yes
Contiguous: Yes
Permitted: Yes
Wet space: Yes
Addition: No
Conversion: No

19 Floor 2 - Primary Bedroom

Dimensions: 14'9" x 19'11"
Area: 267 sq. ft
Counted as living area: Yes

Heated: Yes
Finished: Yes
Enclosed: Yes
Contiguous: Yes
Permitted: Yes
Wet space: No
Addition: No
Conversion: No

20 Floor 2 - Open To Below

Dimensions: 6'8" x 17'6"
Area: 105 sq. ft
Counted as living area: No

Heated: No
Finished: No
Enclosed: No
Contiguous: Yes
Permitted: No
Wet space: No
Addition: No
Conversion: No

2000 Steeplechase Pkwy, Goochland, VA, US

21 Floor 2 - Bedroom



Dimensions: 16'9" x 12'5"
Area: 201 sq. ft
Counted as living area: Yes

Heated: Yes
Finished: Yes
Enclosed: Yes
Contiguous: Yes
Permitted: Yes
Wet space: No
Addition: No
Conversion: No

22 Floor 2 - W.I.C.



Dimensions: 4'4" x 8'3"
Area: 36 sq. ft
Counted as living area: Yes

Heated: Yes
Finished: Yes
Enclosed: Yes
Contiguous: Yes
Permitted: Yes
Wet space: No
Addition: No
Conversion: No

23 Floor 2 - Sitting Room



Dimensions: 16'11" x 14'10"
Area: 279 sq. ft
Counted as living area: Yes

Heated: Yes
Finished: Yes
Enclosed: Yes
Contiguous: Yes
Permitted: Yes
Wet space: No
Addition: No
Conversion: No

2000 Steeplechase Pkwy, Goochland, VA, US

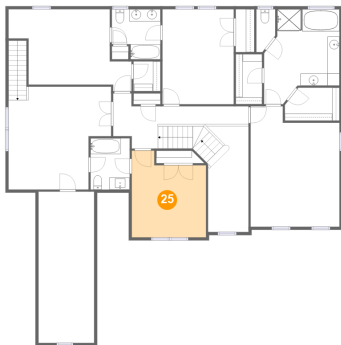
24 Floor 2 - Bath



Dimensions: 8'0" x 8'4"
Area: 59 sq. ft
Counted as living area: Yes

Heated: Yes
Finished: Yes
Enclosed: Yes
Contiguous: Yes
Permitted: Yes
Wet space: Yes
Addition: No
Conversion: No

25 Floor 2 - Bedroom



Dimensions: 12'3" x 14'4"
Area: 155 sq. ft
Counted as living area: Yes

Heated: Yes
Finished: Yes
Enclosed: Yes
Contiguous: Yes
Permitted: Yes
Wet space: No
Addition: No
Conversion: No

26 Floor 2 - Bath



Dimensions: 6'6" x 8'5"
Area: 55 sq. ft
Counted as living area: Yes

Heated: Yes
Finished: Yes
Enclosed: Yes
Contiguous: Yes
Permitted: Yes
Wet space: Yes
Addition: No
Conversion: No