

# 955 Oakshire Lane, Wirtz, Franklin County, Virginia, United States, 24184



## Property Summary

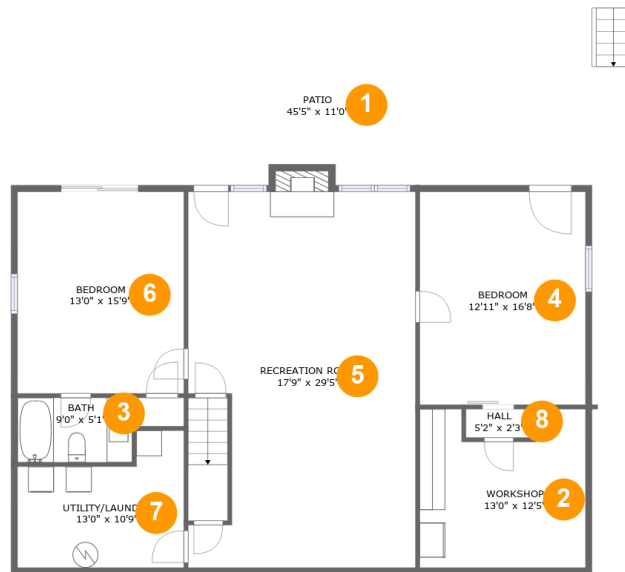
**0** garages    **4** bedrooms    **3** bathrooms    **0** half baths

**2** floors

**2,608** Gross Living Area sqft

**4,060** total sqft

# 955 Oakshire Lane, Wirtz, Franklin County, Virginia, United States, 24184



## Room Dimensions

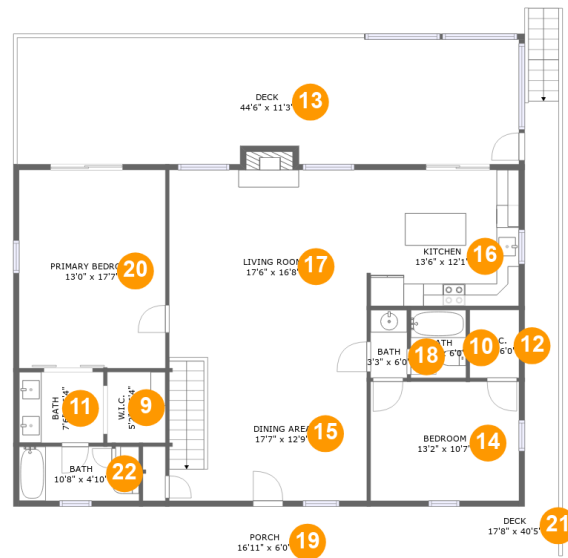
Floor 1

Total sqft: 1885

Living area: 1222

#	Room name	Dimensions	Area (sqft)	Counted as Living Area
1	Patio	45'5" x 11'0"	495 sq. ft	No
2	Workshop	13'0" x 12'5"	146 sq. ft	No
3	Bath	9'0" x 5'1"	45 sq. ft	Yes
4	Bedroom	12'11" x 16'8"	216 sq. ft	Yes
5	Recreation Room	17'9" x 29'5"	494 sq. ft	Yes
6	Bedroom	13'0" x 15'9"	205 sq. ft	Yes
7	UTILITY/LAUNDRY	13'0" x 10'9"	113 sq. ft	Yes
8	Hall	5'2" x 2'3"	11 sq. ft	Yes

# 955 Oakshire Lane, Wirtz, Franklin County, Virginia, United States, 24184



## Room Dimensions

Floor 2

Total sqft: 2175

Living area: 1386

#	Room name	Dimensions	Area (sqft)	Counted as Living Area
9	W.i.c.	5'2" x 6'4"	33 sq. ft	Yes
10	Bath	4'11" x 6'0"	30 sq. ft	Yes
11	Bath	7'6" x 6'4"	47 sq. ft	Yes
12	W.i.c.	4'5" x 6'0"	26 sq. ft	Yes
13	Deck	44'6" x 11'3"	491 sq. ft	No
14	Bedroom	13'2" x 10'7"	140 sq. ft	Yes
15	Dining Area	17'7" x 12'9"	224 sq. ft	Yes
16	Kitchen	13'6" x 12'1"	163 sq. ft	Yes
17	Living Room	17'6" x 16'8"	299 sq. ft	Yes
18	Bath	3'3" x 6'0"	20 sq. ft	Yes
19	Porch	16'11" x 6'0"	102 sq. ft	No

Scan captured on Mon, 14 Oct 2024 20:05:29 GMT

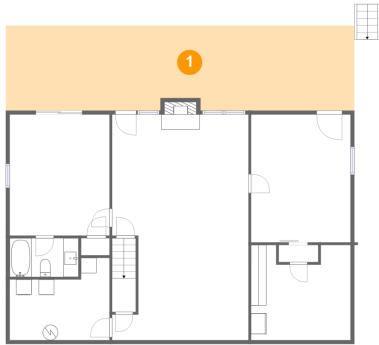
Information is calculated by CubiCasa technology; deemed highly reliable but not guaranteed.

**955 Oakshire Lane, Wirtz, Franklin County,  
Virginia, United States, 24184**

#	Room name	Dimensions	Area (sqft)	Counted as Living Area
20	Primary Bedroom	13'0" x 17'7"	229 sq. ft	Yes
21	Deck	17'8" x 40'5"	187 sq. ft	No
22	Bath	10'8" x 4'10"	46 sq. ft	Yes

# 955 Oakshire Lane, Wirtz, Franklin County, Virginia, United States, 24184

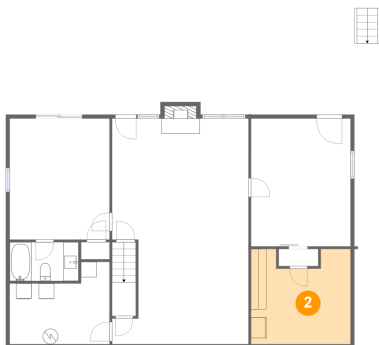
## 1 Floor 1 - Patio



Dimensions: 45'5" x 11'0"  
Area: 495 sq. ft  
Counted as Living Area: No

Heated: No  
Finished: Yes  
Enclosed: No  
Contiguous: Yes  
Permitted: Yes  
Wet Space: No  
Addition: No  
Conversion: No

## 2 Floor 1 - Workshop

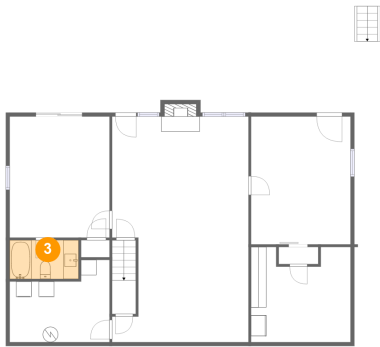


Dimensions: 13'0" x 12'5"  
Area: 146 sq. ft  
Counted as Living Area: No

Heated: No  
Finished: No  
Enclosed: Yes  
Contiguous: No  
Permitted: Yes  
Wet Space: No  
Addition: No  
Conversion: No

# 955 Oakshire Lane, Wirtz, Franklin County, Virginia, United States, 24184

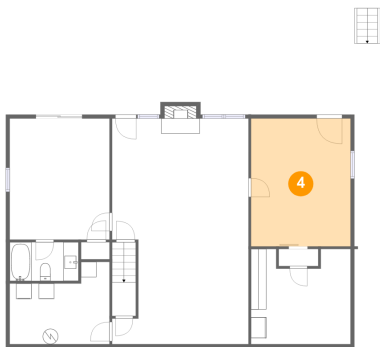
## 3 Floor 1 - Bath



Dimensions: 9'0" x 5'1"  
Area: 45 sq. ft  
Counted as Living Area:  
Yes

Heated: Yes  
Finished: Yes  
Enclosed: Yes  
Contiguous:  
Yes  
Permitted: Yes  
Wet Space: Yes  
Addition: No  
Conversion: No

## 4 Floor 1 - Bedroom



Dimensions: 12'11" x 16'8"  
Area: 216 sq. ft  
Counted as Living Area:  
Yes

Heated: Yes  
Finished: Yes  
Enclosed: Yes  
Contiguous:  
Yes  
Permitted: Yes  
Wet Space: No  
Addition: No  
Conversion: No

## 5 Floor 1 - Recreation Room

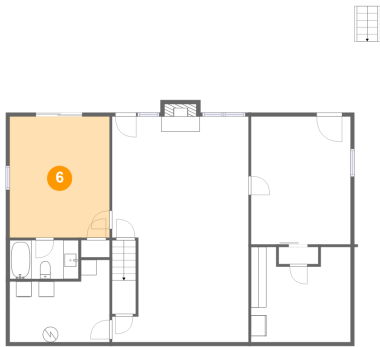


Dimensions: 17'9" x 29'5"  
Area: 494 sq. ft  
Counted as Living Area:  
Yes

Heated: Yes  
Finished: Yes  
Enclosed: Yes  
Contiguous:  
Yes  
Permitted: Yes  
Wet Space: No  
Addition: No  
Conversion: No

# 955 Oakshire Lane, Wirtz, Franklin County, Virginia, United States, 24184

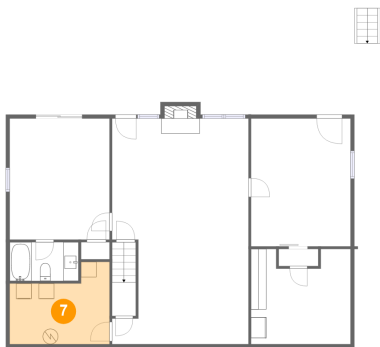
## 6 Floor 1 - Bedroom



Dimensions: 13'0" x 15'9"  
Area: 205 sq. ft  
Counted as Living Area:  
Yes

Heated: Yes  
Finished: Yes  
Enclosed: Yes  
Contiguous:  
Yes  
Permitted: Yes  
Wet Space: No  
Addition: No  
Conversion: No

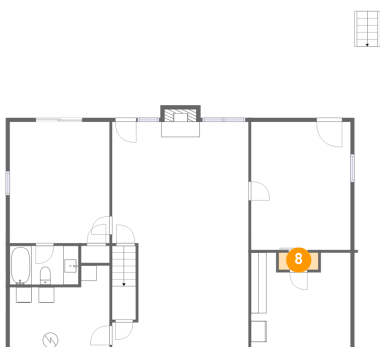
## 7 Floor 1 - UTILITY/LAUNDRY



Dimensions: 13'0" x 10'9"  
Area: 113 sq. ft  
Counted as Living Area:  
Yes

Heated: Yes  
Finished: Yes  
Enclosed: Yes  
Contiguous:  
Yes  
Permitted: Yes  
Wet Space: No  
Addition: No  
Conversion: No

## 8 Floor 1 - Hall



Dimensions: 5'2" x 2'3"  
Area: 11 sq. ft  
Counted as Living Area:  
Yes

Heated: Yes  
Finished: Yes  
Enclosed: Yes  
Contiguous:  
Yes  
Permitted: Yes  
Wet Space: No  
Addition: No  
Conversion: No

# 955 Oakshire Lane, Wirtz, Franklin County, Virginia, United States, 24184

## 9 Floor 2 - W.i.c.



Dimensions: 5'2" x 6'4"  
Area: 33 sq. ft  
Counted as Living Area:  
Yes

Heated: Yes  
Finished: Yes  
Enclosed: Yes  
Contiguous:  
Yes  
Permitted: Yes  
Wet Space: No  
Addition: No  
Conversion: No

## 10 Floor 2 - Bath



Dimensions: 4'11" x 6'0"  
Area: 30 sq. ft  
Counted as Living Area:  
Yes

Heated: Yes  
Finished: Yes  
Enclosed: Yes  
Contiguous:  
Yes  
Permitted: Yes  
Wet Space: Yes  
Addition: No  
Conversion: No

## 11 Floor 2 - Bath



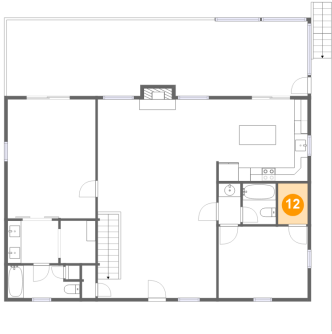
Dimensions: 7'6" x 6'4"  
Area: 47 sq. ft  
Counted as Living Area:  
Yes

Heated: Yes  
Finished: Yes  
Enclosed: Yes  
Contiguous:  
Yes  
Permitted: Yes  
Wet Space: Yes  
Addition: No  
Conversion: No



# 955 Oakshire Lane, Wirtz, Franklin County, Virginia, United States, 24184

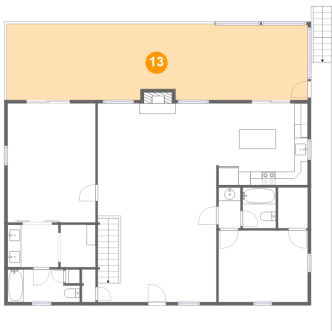
## 12 Floor 2 - W.i.c.



Dimensions: 4'5" x 6'0"  
Area: 26 sq. ft  
Counted as Living Area:  
Yes

Heated: Yes  
Finished: Yes  
Enclosed: Yes  
Contiguous:  
Yes  
Permitted: Yes  
Wet Space: No  
Addition: No  
Conversion: No

## 13 Floor 2 - Deck



Dimensions: 44'6" x 11'3"  
Area: 491 sq. ft  
Counted as Living Area: No

Heated: No  
Finished: Yes  
Enclosed: No  
Contiguous: Yes  
Permitted: Yes  
Wet Space: No  
Addition: No  
Conversion: No

## 14 Floor 2 - Bedroom



Dimensions: 13'2" x 10'7"  
Area: 140 sq. ft  
Counted as Living Area:  
Yes

Heated: Yes  
Finished: Yes  
Enclosed: Yes  
Contiguous:  
Yes  
Permitted: Yes  
Wet Space: No  
Addition: No  
Conversion: No

# 955 Oakshire Lane, Wirtz, Franklin County, Virginia, United States, 24184

## 15 Floor 2 - Dining Area



Dimensions: 17'7" x 12'9"  
Area: 224 sq. ft  
Counted as Living Area:  
Yes

Heated: Yes  
Finished: Yes  
Enclosed: Yes  
Contiguous:  
Yes  
Permitted: Yes  
Wet Space: No  
Addition: No  
Conversion: No

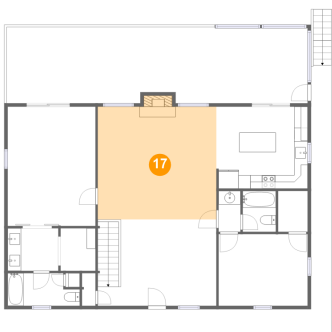
## 16 Floor 2 - Kitchen



Dimensions: 13'6" x 12'1"  
Area: 163 sq. ft  
Counted as Living Area:  
Yes

Heated: Yes  
Finished: Yes  
Enclosed: Yes  
Contiguous:  
Yes  
Permitted: Yes  
Wet Space: No  
Addition: No  
Conversion: No

## 17 Floor 2 - Living Room



Dimensions: 17'6" x 16'8"  
Area: 299 sq. ft  
Counted as Living Area:  
Yes

Heated: Yes  
Finished: Yes  
Enclosed: Yes  
Contiguous:  
Yes  
Permitted: Yes  
Wet Space: No  
Addition: No  
Conversion: No

# 955 Oakshire Lane, Wirtz, Franklin County, Virginia, United States, 24184

## 18 Floor 2 - Bath



Dimensions: 3'3" x 6'0"  
Area: 20 sq. ft  
Counted as Living Area:  
Yes

Heated: Yes  
Finished: Yes  
Enclosed: Yes  
Contiguous:  
Yes  
Permitted: Yes  
Wet Space: Yes  
Addition: No  
Conversion: No

## 19 Floor 2 - Porch



Dimensions: 16'11" x 6'0"  
Area: 102 sq. ft  
Counted as Living Area: No

Heated: No  
Finished: Yes  
Enclosed: No  
Contiguous: Yes  
Permitted: Yes  
Wet Space: No  
Addition: No  
Conversion: No

## 20 Floor 2 - Primary Bedroom

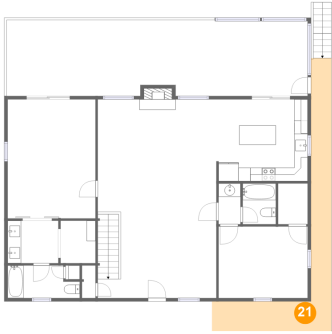


Dimensions: 13'0" x 17'7"  
Area: 229 sq. ft  
Counted as Living Area:  
Yes

Heated: Yes  
Finished: Yes  
Enclosed: Yes  
Contiguous:  
Yes  
Permitted: Yes  
Wet Space: No  
Addition: No  
Conversion: No

# 955 Oakshire Lane, Wirtz, Franklin County, Virginia, United States, 24184

## 21 Floor 2 - Deck



Dimensions: 17'8" x 40'5"  
Area: 187 sq. ft  
Counted as Living Area: No

Heated: No  
Finished: Yes  
Enclosed: No  
Contiguous: Yes  
Permitted: Yes  
Wet Space: No  
Addition: No  
Conversion: No

## 22 Floor 2 - Bath



Dimensions: 10'8" x 4'10"  
Area: 46 sq. ft  
Counted as Living Area:  
Yes

Heated: Yes  
Finished: Yes  
Enclosed: Yes  
Contiguous:  
Yes  
Permitted: Yes  
Wet Space: Yes  
Addition: No  
Conversion: No