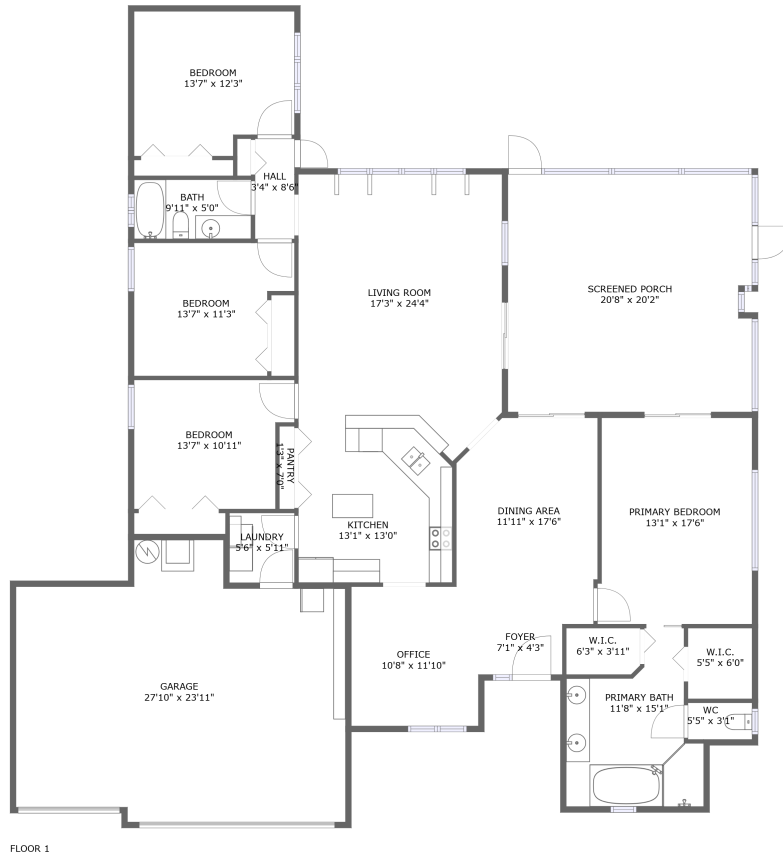


5120 Coopers Hawk Court, Twin Lakes of Brandon, Valrico, Hillsborough County, Florida,




Property Summary


 **1** garages

 **4** bedrooms

 **2** bathrooms

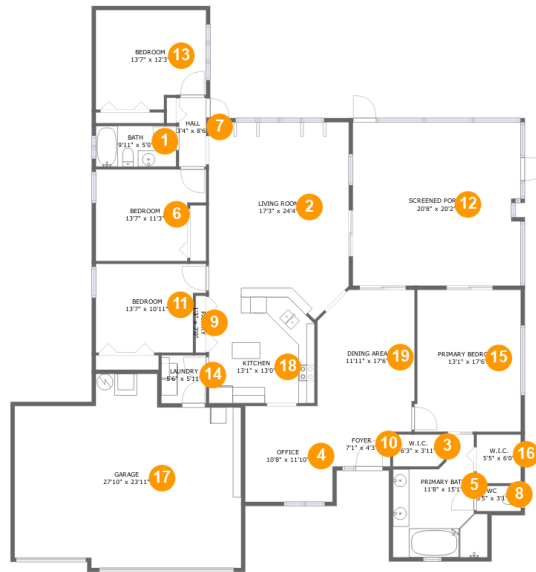
 **0** half baths

 **1** floors

 **2,118** Gross Living Area sqft

 **3,161** total sqft

5120 Coopers Hawk Court, Twin Lakes of Brandon, Valrico, Hillsborough County, Florida,



Room Dimensions

Floor 1

Total sqft: 3161

Living area: 2118

#	Room name	Dimensions	Area (sqft)	Counted as Living Area
1	Bath	9'11" x 5'0"	50 sq. ft	Yes
2	Living Room	17'3" x 24'4"	379 sq. ft	Yes
3	W.i.c.	6'3" x 3'11"	24 sq. ft	Yes
4	Office	10'8" x 11'10"	124 sq. ft	Yes
5	Primary Bath	11'8" x 15'1"	132 sq. ft	Yes
6	Bedroom	13'7" x 11'3"	137 sq. ft	Yes
7	Hall	3'4" x 8'6"	28 sq. ft	Yes
8	Wc	5'5" x 3'1"	17 sq. ft	Yes
9	Pantry	1'3" x 7'0"	9 sq. ft	Yes
10	Foyer	7'1" x 4'3"	30 sq. ft	Yes
11	Bedroom	13'7" x 10'11"	137 sq. ft	Yes

**5120 Coopers Hawk Court, Twin Lakes of
Brandon, Valrico, Hillsborough County, Florida,**

#	Room name	Dimensions	Area (sqft)	Counted as Living Area
12	Screened Porch	20'8" x 20'2"	413 sq. ft	No
13	Bedroom	13'7" x 12'3"	157 sq. ft	Yes
14	Laundry	5'6" x 5'11"	33 sq. ft	Yes
15	Primary Bedroom	13'1" x 17'6"	224 sq. ft	Yes
16	W.i.c.	5'5" x 6'0"	33 sq. ft	Yes
17	Garage	27'10" x 23'11"	573 sq. ft	No
18	Kitchen	13'1" x 13'0"	165 sq. ft	Yes
19	Dining Area	11'11" x 17'6"	198 sq. ft	Yes

5120 Coopers Hawk Court, Twin Lakes of Brandon, Valrico, Hillsborough County, Florida,

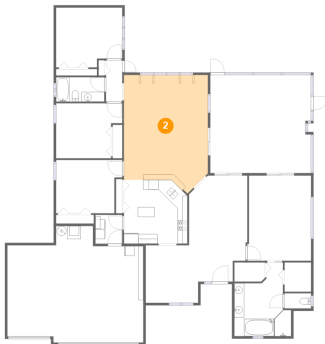
1 Floor 1 - Bath



Dimensions: 9'11" x 5'0"
Area: 50 sq. ft
Counted as Living Area:
Yes

Heated: Yes
Finished: Yes
Enclosed: Yes
Contiguous:
Yes
Permitted: Yes
Wet Space: Yes
Addition: No
Conversion: No

2 Floor 1 - Living Room

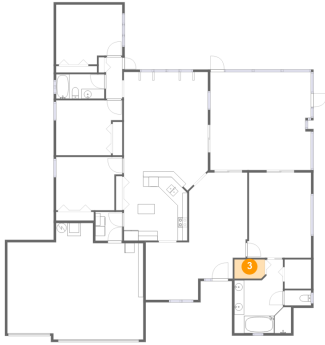


Dimensions: 17'3" x 24'4"
Area: 379 sq. ft
Counted as Living Area:
Yes

Heated: Yes
Finished: Yes
Enclosed: Yes
Contiguous:
Yes
Permitted: Yes
Wet Space: No
Addition: No
Conversion: No

5120 Coopers Hawk Court, Twin Lakes of Brandon, Valrico, Hillsborough County, Florida,

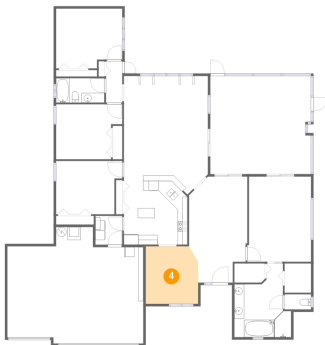
3 Floor 1 - W.i.c.



Dimensions: 6'3" x 3'11"
Area: 24 sq. ft
Counted as Living Area:
Yes

Heated: Yes
Finished: Yes
Enclosed: Yes
Contiguous:
Yes
Permitted: Yes
Wet Space: No
Addition: No
Conversion: No

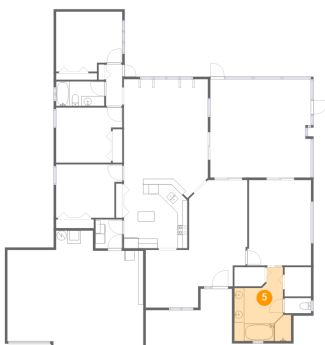
4 Floor 1 - Office



Dimensions: 10'8" x 11'10"
Area: 124 sq. ft
Counted as Living Area:
Yes

Heated: Yes
Finished: Yes
Enclosed: Yes
Contiguous:
Yes
Permitted: Yes
Wet Space: No
Addition: No
Conversion: No

5 Floor 1 - Primary Bath

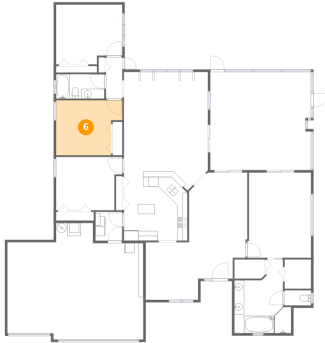


Dimensions: 11'8" x 15'1"
Area: 132 sq. ft
Counted as Living Area:
Yes

Heated: Yes
Finished: Yes
Enclosed: Yes
Contiguous:
Yes
Permitted: Yes
Wet Space: Yes
Addition: No
Conversion: No

5120 Coopers Hawk Court, Twin Lakes of Brandon, Valrico, Hillsborough County, Florida,

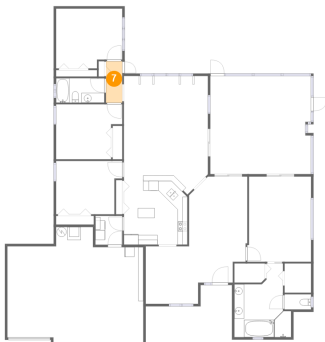
6 Floor 1 - Bedroom



Dimensions: 13'7" x 11'3"
Area: 137 sq. ft
Counted as Living Area:
Yes

Heated: Yes
Finished: Yes
Enclosed: Yes
Contiguous:
Yes
Permitted: Yes
Wet Space: No
Addition: No
Conversion: No

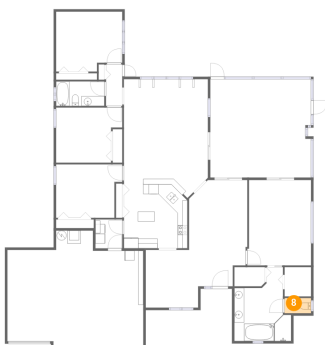
7 Floor 1 - Hall



Dimensions: 3'4" x 8'6"
Area: 28 sq. ft
Counted as Living Area:
Yes

Heated: Yes
Finished: Yes
Enclosed: Yes
Contiguous:
Yes
Permitted: Yes
Wet Space: No
Addition: No
Conversion: No

8 Floor 1 - Wc



Dimensions: 5'5" x 3'1"
Area: 17 sq. ft
Counted as Living Area:
Yes

Heated: Yes
Finished: Yes
Enclosed: Yes
Contiguous:
Yes
Permitted: Yes
Wet Space: Yes
Addition: No
Conversion: No

5120 Coopers Hawk Court, Twin Lakes of Brandon, Valrico, Hillsborough County, Florida,

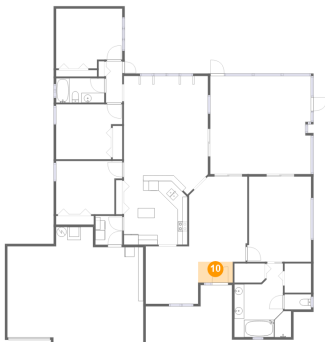
9 Floor 1 - Pantry



Dimensions: 1'3" x 7'0"
Area: 9 sq. ft
Counted as Living Area:
Yes

Heated: Yes
Finished: Yes
Enclosed: Yes
Contiguous:
Yes
Permitted: Yes
Wet Space: No
Addition: No
Conversion: No

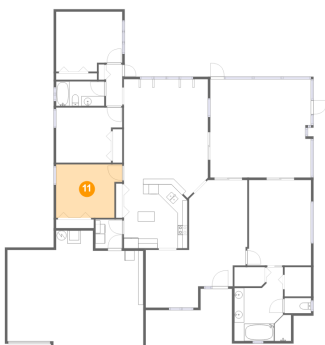
10 Floor 1 - Foyer



Dimensions: 7'1" x 4'3"
Area: 30 sq. ft
Counted as Living Area:
Yes

Heated: Yes
Finished: Yes
Enclosed: Yes
Contiguous:
Yes
Permitted: Yes
Wet Space: No
Addition: No
Conversion: No

11 Floor 1 - Bedroom

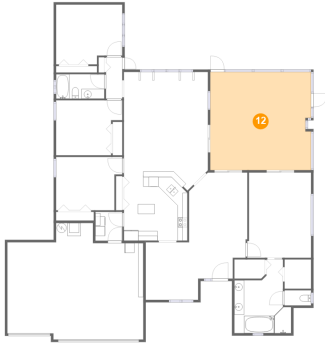


Dimensions: 13'7" x 10'11"
Area: 137 sq. ft
Counted as Living Area:
Yes

Heated: Yes
Finished: Yes
Enclosed: Yes
Contiguous:
Yes
Permitted: Yes
Wet Space: No
Addition: No
Conversion: No

5120 Coopers Hawk Court, Twin Lakes of Brandon, Valrico, Hillsborough County, Florida,

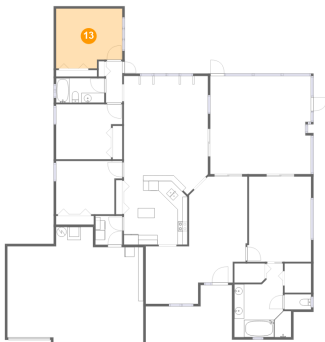
12 Floor 1 - Screened Porch



Dimensions: 20'8" x 20'2"
Area: 413 sq. ft
Counted as Living Area: No

Heated: No
Finished: Yes
Enclosed: No
Contiguous: Yes
Permitted: Yes
Wet Space: No
Addition: No
Conversion: No

13 Floor 1 - Bedroom



Dimensions: 13'7" x 12'3"
Area: 157 sq. ft
Counted as Living Area:
Yes

Heated: Yes
Finished: Yes
Enclosed: Yes
Contiguous:
Yes
Permitted: Yes
Wet Space: No
Addition: No
Conversion: No

14 Floor 1 - Laundry

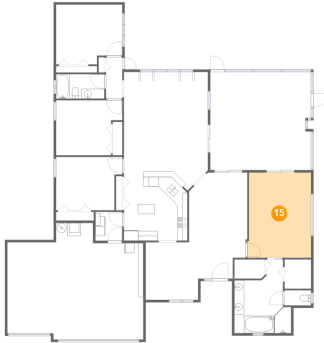


Dimensions: 5'6" x 5'11"
Area: 33 sq. ft
Counted as Living Area:
Yes

Heated: Yes
Finished: Yes
Enclosed: Yes
Contiguous:
Yes
Permitted: Yes
Wet Space: No
Addition: No
Conversion: No

5120 Coopers Hawk Court, Twin Lakes of Brandon, Valrico, Hillsborough County, Florida,

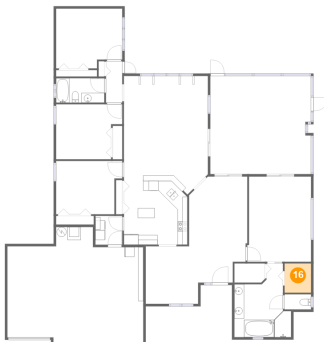
15 Floor 1 - Primary Bedroom



Dimensions: 13'1" x 17'6"
Area: 224 sq. ft
Counted as Living Area:
Yes

Heated: Yes
Finished: Yes
Enclosed: Yes
Contiguous:
Yes
Permitted: Yes
Wet Space: No
Addition: No
Conversion: No

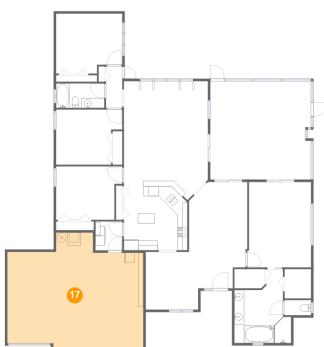
16 Floor 1 - W.i.c.



Dimensions: 5'5" x 6'0"
Area: 33 sq. ft
Counted as Living Area:
Yes

Heated: Yes
Finished: Yes
Enclosed: Yes
Contiguous:
Yes
Permitted: Yes
Wet Space: No
Addition: No
Conversion: No

17 Floor 1 - Garage

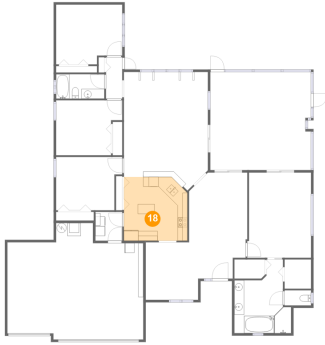


Dimensions: 27'10" x 23'11"
Area: 573 sq. ft
Counted as Living Area: No

Heated: No
Finished: No
Enclosed: Yes
Contiguous: Yes
Permitted: Yes
Wet Space: No
Addition: No
Conversion: No

5120 Coopers Hawk Court, Twin Lakes of Brandon, Valrico, Hillsborough County, Florida,

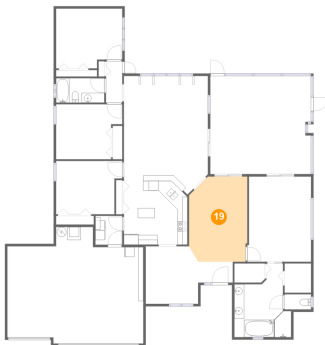
18 Floor 1 - Kitchen



Dimensions: 13'1" x 13'0"
Area: 165 sq. ft
Counted as Living Area:
Yes

Heated: Yes
Finished: Yes
Enclosed: Yes
Contiguous:
Yes
Permitted: Yes
Wet Space: No
Addition: No
Conversion: No

19 Floor 1 - Dining Area



Dimensions: 11'11" x 17'6"
Area: 198 sq. ft
Counted as Living Area:
Yes

Heated: Yes
Finished: Yes
Enclosed: Yes
Contiguous:
Yes
Permitted: Yes
Wet Space: No
Addition: No
Conversion: No