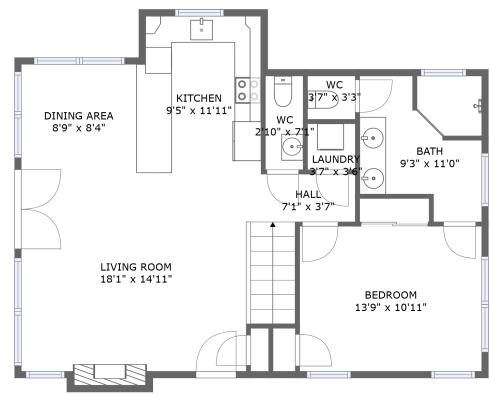
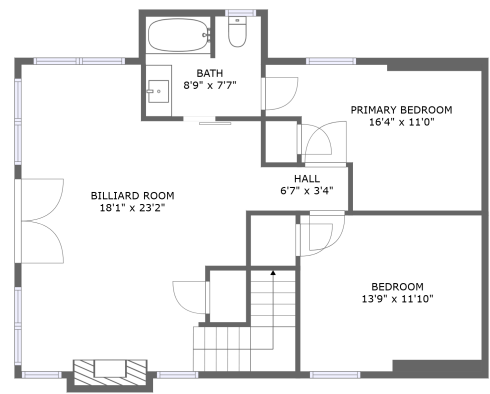


Home report

2624 Overholt Trail, Sevierville, Sevier County, Tennessee,
United States, 37862



FLOOR 2



FLOOR 1

Total Area: 1673 sq. ft
Floor 1: 842 sq. ft, Floor 2: 831 sq. ft
Excluded: Fireplace 14 sq. ft, Walls: 114 sq. ft

Property summary

**2**
Floors

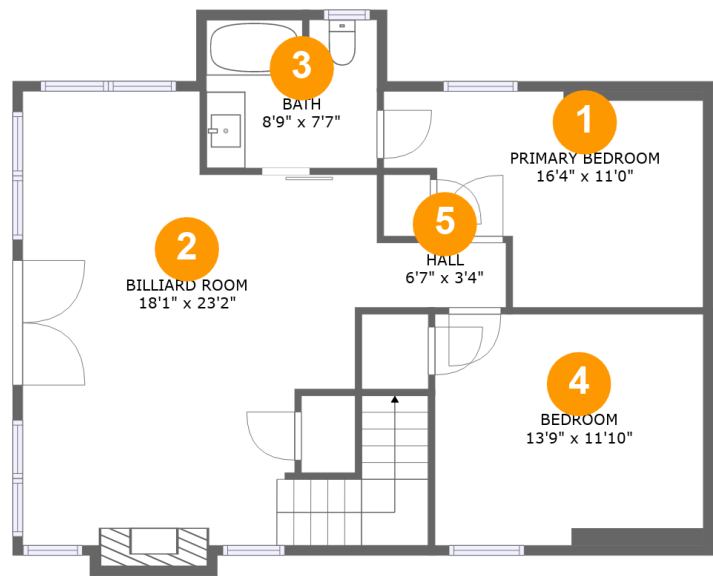
**3**
Bedrooms

**2**
Bathrooms

**1**
Half baths

Home report

2624 Overholt Trail, Sevierville, Sevier County, Tennessee,
United States, 37862



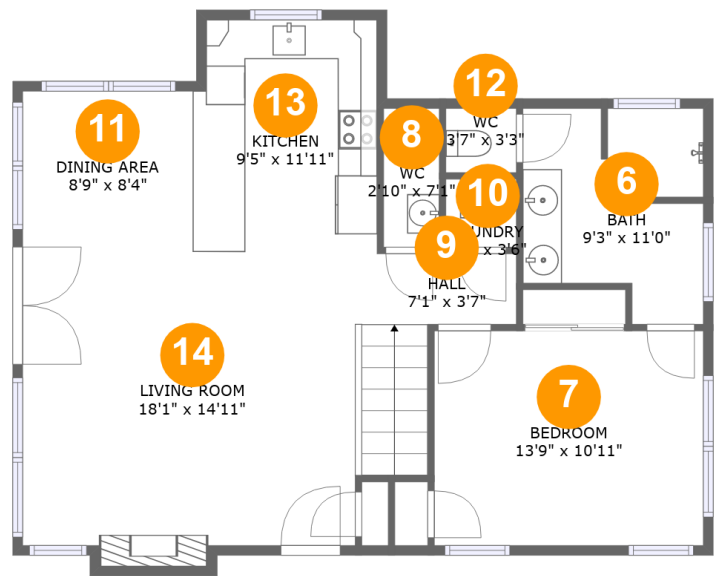
Room dimensions

Floor 1 Total:842sqft Excluded: 7sqft

#		Max Dimensions	sqft	Included
1	Primary Bedroom	16'4" x 11'0"	147 sq. ft	Yes
2	Billiard Room	18'1" x 23'2"	386 sq. ft	Yes
3	Bath	8'9" x 7'7"	65 sq. ft	Yes
4	Bedroom	13'9" x 11'10"	162 sq. ft	Yes
5	Hall	6'7" x 3'4"	22 sq. ft	Yes

Home report

2624 Overholt Trail, Sevierville, Sevier County, Tennessee,
United States, 37862



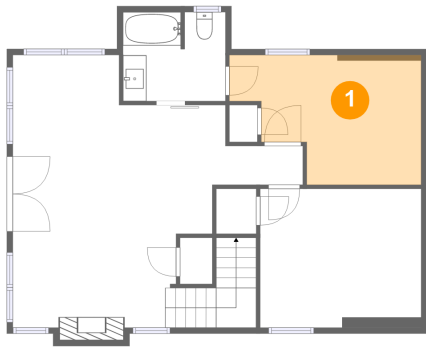
Room dimensions

Floor 2 Total:831sqft Excluded: 7sqft

#		Max Dimensions	sqft	Included
6	Bath	9'3" x 11'0"	88 sq. ft	Yes
7	Bedroom	13'9" x 10'11"	151 sq. ft	Yes
8	WC	2'10" x 7'1"	20 sq. ft	Yes
9	Hall	7'1" x 3'7"	26 sq. ft	Yes
10	Laundry	3'7" x 3'6"	13 sq. ft	Yes
11	Dining Area	8'9" x 8'4"	72 sq. ft	Yes
12	WC	3'7" x 3'3"	12 sq. ft	Yes
13	Kitchen	9'5" x 11'11"	110 sq. ft	Yes
14	Living Room	18'1" x 14'11"	294 sq. ft	Yes

2624 Overholt Trail, Sevierville, Sevier County, Tennessee,
United States, 37862

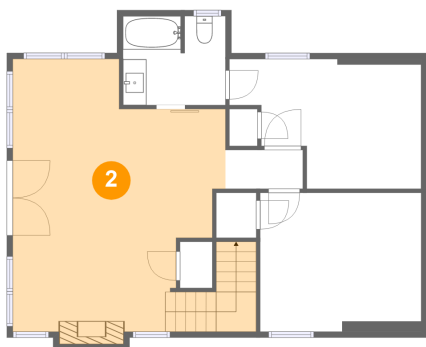
1 Floor 1 - Primary Bedroom



Max Dimensions: 16'4" x 11'0"
Calculated Area: 147 sq. ft
Included: Yes

Heated: Yes
Finished: Yes
Enclosed: Yes
Contiguous: Yes
Permitted: Yes
Wet space: No
Addition: No
Conversion: No

2 Floor 1 - Billiard Room



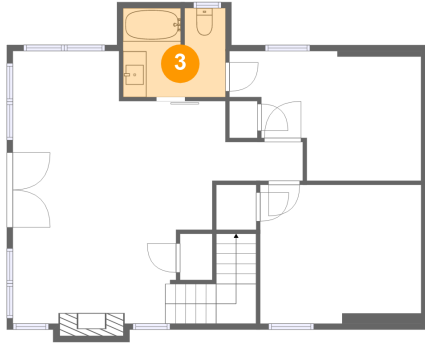
Max Dimensions: 18'1" x 23'2"
Calculated Area: 386 sq. ft
Included: Yes

Heated: Yes
Finished: Yes
Enclosed: Yes
Contiguous: Yes
Permitted: Yes
Wet space: No
Addition: No
Conversion: No

Home report

2624 Overholt Trail, Sevierville, Sevier County, Tennessee,
United States, 37862

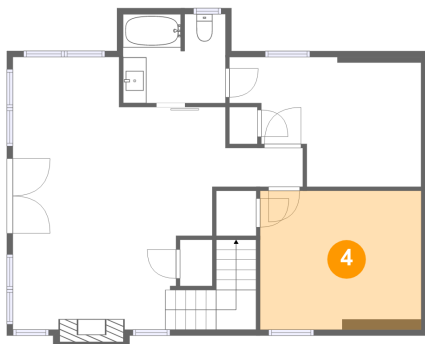
3 Floor 1 - Bath



Max Dimensions: 8'9" x 7'7"
Calculated Area: 65 sq. ft
Included: Yes

Heated: Yes
Finished: Yes
Enclosed: Yes
Contiguous: Yes
Permitted: Yes
Wet space: Yes
Addition: No
Conversion: No

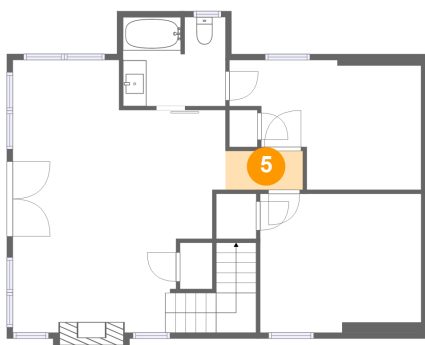
4 Floor 1 - Bedroom



Max Dimensions: 13'9" x 11'10"
Calculated Area: 162 sq. ft
Included: Yes

Heated: Yes
Finished: Yes
Enclosed: Yes
Contiguous: Yes
Permitted: Yes
Wet space: No
Addition: No
Conversion: No

5 Floor 1 - Hall



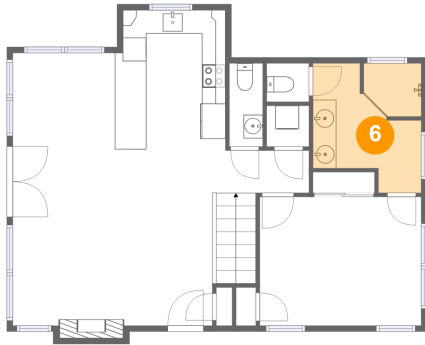
Max Dimensions: 6'7" x 3'4"
Calculated Area: 22 sq. ft
Included: Yes

Heated: Yes
Finished: Yes
Enclosed: Yes
Contiguous: Yes
Permitted: Yes
Wet space: No
Addition: No
Conversion: No

Home report

2624 Overholt Trail, Sevierville, Sevier County, Tennessee,
United States, 37862

6 Floor 2 - Bath



Max Dimensions: 9'3" x 11'0"
Calculated Area: 88 sq. ft
Included: Yes

Heated: Yes
Finished: Yes
Enclosed: Yes
Contiguous: Yes
Permitted: Yes
Wet space: Yes
Addition: No
Conversion: No

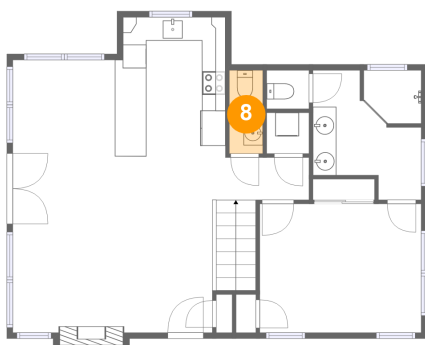
7 Floor 2 - Bedroom



Max Dimensions: 13'9" x 10'11"
Calculated Area: 151 sq. ft
Included: Yes

Heated: Yes
Finished: Yes
Enclosed: Yes
Contiguous: Yes
Permitted: Yes
Wet space: No
Addition: No
Conversion: No

8 Floor 2 - WC



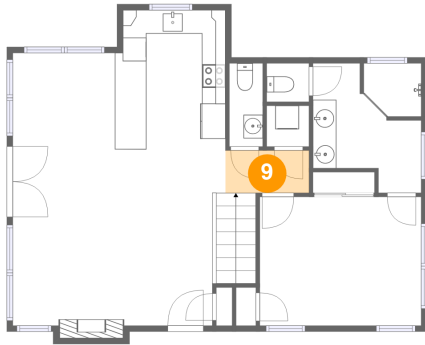
Max Dimensions: 2'10" x 7'1"
Calculated Area: 20 sq. ft
Included: Yes

Heated: Yes
Finished: Yes
Enclosed: Yes
Contiguous: Yes
Permitted: Yes
Wet space: Yes
Addition: No
Conversion: No

Home report

2624 Overholt Trail, Sevierville, Sevier County, Tennessee,
United States, 37862

9 Floor 2 - Hall



Max Dimensions: 7'1" x 3'7"
Calculated Area: 26 sq. ft
Included: Yes

Heated: Yes
Finished: Yes
Enclosed: Yes
Contiguous: Yes
Permitted: Yes
Wet space: No
Addition: No
Conversion: No

10 Floor 2 - Laundry



Max Dimensions: 3'7" x 3'6"
Calculated Area: 13 sq. ft
Included: Yes

Heated: Yes
Finished: Yes
Enclosed: Yes
Contiguous: Yes
Permitted: Yes
Wet space: No
Addition: No
Conversion: No

11 Floor 2 - Dining Area



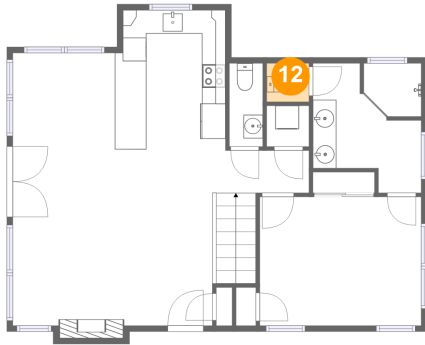
Max Dimensions: 8'9" x 8'4"
Calculated Area: 72 sq. ft
Included: Yes

Heated: Yes
Finished: Yes
Enclosed: Yes
Contiguous: Yes
Permitted: Yes
Wet space: No
Addition: No
Conversion: No

Home report

2624 Overholt Trail, Sevierville, Sevier County, Tennessee,
United States, 37862

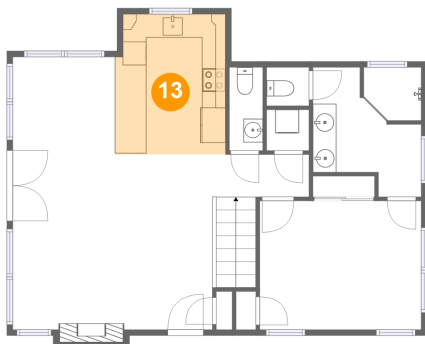
12 Floor 2 - WC



Max Dimensions: 3'7" x 3'3"
Calculated Area: 12 sq. ft
Included: Yes

Heated: Yes
Finished: Yes
Enclosed: Yes
Contiguous: Yes
Permitted: Yes
Wet space: Yes
Addition: No
Conversion: No

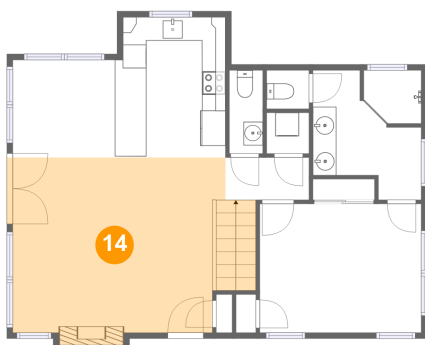
13 Floor 2 - Kitchen



Max Dimensions: 9'5" x
11'11"
Calculated Area: 110 sq. ft
Included: Yes

Heated: Yes
Finished: Yes
Enclosed: Yes
Contiguous:
Yes
Permitted: Yes
Wet space: No
Addition: No
Conversion: No

14 Floor 2 - Living Room



Max Dimensions: 18'1" x
14'11"
Calculated Area: 294 sq. ft
Included: Yes

Heated: Yes
Finished: Yes
Enclosed: Yes
Contiguous:
Yes
Permitted: Yes
Wet space: No
Addition: No
Conversion: No