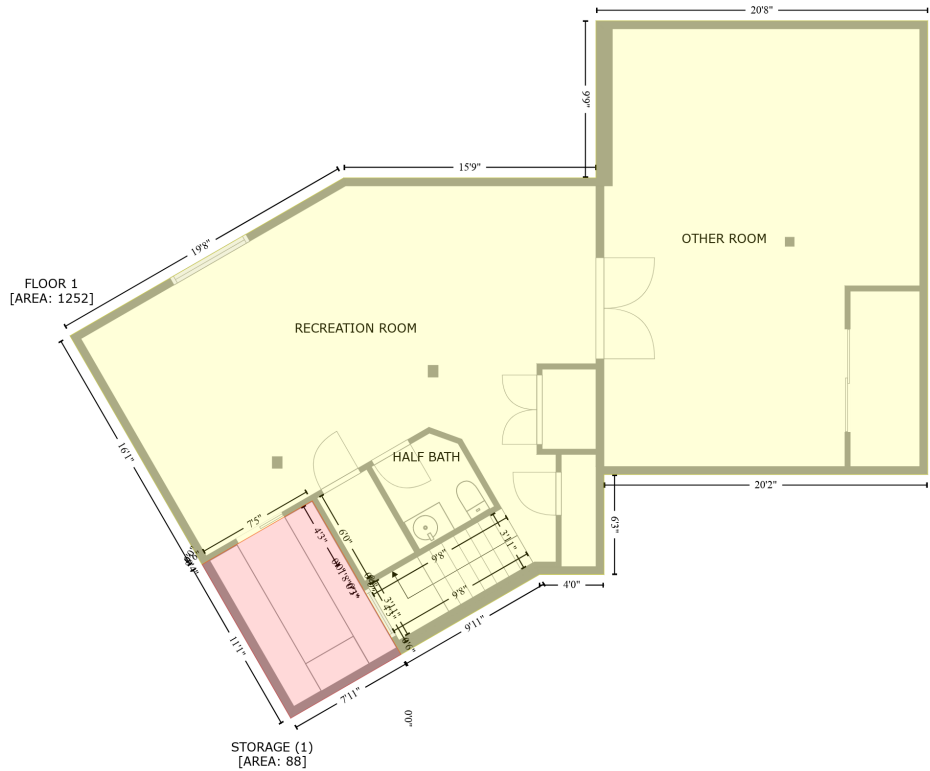


704 S Adams St, Philo, IL, US

Gross Living Area: 2455 sq. ft



Space	Area (sq. ft)	Calculation <small>Coordinate Polygon Area Algorithm using inches</small>
FLOOR 1 (Living area)	1252	$ \begin{aligned} & -((686.5 + 686.5) * (395 - 734) + (686.5 + 444.7) * (734 - 734) + (444.7 + 444.7) * (734 - 808.7) + \\ & (444.7 + 396.4) * (808.7 - 808.7) + (396.4 + 293) * (808.7 - 868.4) + (293 + 290.2) * (868.4 - \\ & 863.4) + (290.2 + 290.2) * (863.4 - 863.2) + (290.2 + 264.5) * (863.2 - 819) + (264.5 + 262.5) * \\ & (819 - 815.6) + (262.5 + 262.5) * (815.6 - 815.5) + (262.5 + 226.8) * (815.5 - 753.5) + (226.8 + \\ & 149.5) * (753.5 - 798.2) + (149.5 + 144.3) * (798.2 - 801.2) + (144.3 + 142.4) * (801.2 - 797.9) + \\ & (142.4 + 142.5) * (797.9 - 797.6) + (142.5 + 45.7) * (797.6 - 630.4) + (45.7 + 250.1) * (630.4 - \\ & 512.3) + (250.1 + 438.7) * (512.3 - 512.3) + (438.7 + 438.7) * (512.3 - 395) + (438.7 + 686.5) * \\ & (395 - 395)) * 0.5 * 0.00694 \end{aligned} $
STORAGE (Non-living area)	88	$ \begin{aligned} & -((226.8 + 252.5) * (753.5 - 797.9) + (252.5 + 252.7) * (797.9 - 798.2) + (252.7 + 262.5) * (798.2 - \\ & 815.5) + (262.5 + 262.5) * (815.5 - 815.6) + (262.5 + 264.2) * (815.6 - 818.1) + (264.2 + 264.5) * \\ & (818.1 - 819) + (264.5 + 290) * (819 - 863.2) + (290 + 293) * (863.2 - 868.4) + (293 + 210.7) * \\ & (868.4 - 916) + (210.7 + 144.5) * (916 - 801.2) + (144.5 + 149.5) * (801.2 - 798.2) + (149.5 + \\ & 226.8) * (798.2 - 753.5)) * 0.5 * 0.00694 \end{aligned} $

704 S Adams St, Philo, IL, US

Gross Living Area: 2455 sq. ft



Space	Area (sq. ft)	Calculation
FLOOR 2 (Living area)	2455	Coordinate Polygon Area Algorithm using inches $-((785.3 + 785.3) * (338 - 455.4) + (785.3 + 976.3) * (455.4 - 455.4) + (976.3 + 1315.1) * (455.4 - 651) + (1315.1 + 1246.6) * (651 - 769.5) + (1246.6 + 1246.6) * (769.5 - 770) + (1246.6 + 1244.7) * (770 - 773) + (1244.7 + 1231.2) * (773 - 796.3) + (1231.2 + 1230.8) * (796.3 - 796.9) + (1230.8 + 1230.7) * (796.9 - 797.4) + (1230.7 + 1229.2) * (797.4 - 799.8) + (1229.2 + 1150.4) * (799.8 - 936.2) + (1150.4 + 1015) * (936.2 - 858.1) + (1015 + 1011.5) * (858.1 - 856) + (1011.5 + 1011.4) * (856 - 855.9) + (1011.4 + 968.3) * (855.9 - 831.1) + (968.3 + 964.8) * (831.1 - 829.1) + (964.8 + 913.2) * (829.1 - 799.3) + (913.2 + 909.8) * (799.3 - 797.4) + (909.8 + 909.8) * (797.4 - 797.2) + (909.8 + 830.9) * (797.2 - 751.7) + (830.9 + 779.5) * (751.7 - 751.7) + (779.5 + 779.5) * (751.7 - 677) + (779.5 + 543.6) * (677 - 677) + (543.6 + 543.6) * (677 - 751.7) + (543.6 + 495.4) * (751.7 - 751.7) + (495.4 + 310) * (751.7 - 858.7) + (310 + 307) * (858.7 - 853.6) + (307 + 306.5) * (853.6 - 853.8) + (306.5 + 247.1) * (853.8 - 750.8) + (247.1 + 245.9) * (750.8 - 748.8) + (245.9 + 245.5) * (748.8 - 748.4) + (245.5 + 245.5) * (748.4 - 747.7) + (245.5 + 245) * (747.7 - 747.3) + (245 + 222.9) * (747.3 - 709) + (222.9 + 222.6) * (709 - 708.7) + (222.6 + 221.7) * (708.7 - 706.7) + (221.7 + 220.9) * (706.7 - 705.5) + (220.9 + 203.3) * (705.5 - 675) + (203.3 + 200.1) * (675 - 669.7) + (200.1 + 147.6) * (669.7 - 578.6) + (147.6 + 152.8) * (578.6 - 575.6) + (152.8 + 149.8) * (575.6 - 570.4) + (149.8 + 348.9) * (570.4 - 455.4) + (348.9 + 537.4) * (455.4 - 455.4) + (537.4 + 537.4) * (455.4 - 338) + (537.4 + 785.3) * (338 - 338)) * 0.5 * 0.00694$
GARAGE (Non-living area)	507	$-((200.1 + 202.8) * (669.7 - 674.4) + (202.8 + 203.2) * (674.4 - 674.9) + (203.2 + 204.5) * (674.9 - 677) + (204.5 + 221) * (677 - 705.9) + (221 + 222.4) * (705.9 - 707.9) + (222.4 + 222.6) * (707.9 - 708.7) + (222.6 + 222.9) * (708.7 - 709) + (222.9 + 245) * (709 - 747.3) + (245 + 245.5) * (747.3 - 748.1) + (245.5 + 247) * (748.1 - 750.8) + (247 + 247.5) * (750.8 - 751.7) + (247.5 + 260.1) * (751.7 - 773) + (260.1 + 273.9) * (773 - 796.9) + (273.9 + 306.5) * (796.9 - 853.8) + (306.5 + 307) * (853.8 - 853.6) + (307 + 310) * (853.6 - 858.7) + (310 + 314.6) * (858.7 - 855.9) + (314.6 + 332.6) * (855.9 - 887) + (332.6 + 79.7) * (887 - 1033) + (79.7 + -44.5) * (1033 - 817.9) + (-44.5 + -39.4) * (817.9 - 815) + (-39.4 + -42.4) * (815 - 809.8) + (-42.4 + 200.1) * (809.8 - 669.7)) * 0.5 * 0.00694$
GARAGE (Non-living area)	724	$-((25.7 + 149.6) * (355.4 - 570.4) + (149.6 + 152.8) * (570.4 - 575.6) + (152.8 + 147.6) * (575.6 - 578.6) + (147.6 + 147.6) * (578.6 - 578.7) + (147.6 + 200.1) * (578.7 - 669.7) + (200.1 + -42.2) * (669.7 - 809.9) + (-42.2 + -47.4) * (809.9 - 812.9) + (-47.4 + -227.2) * (812.9 - 501.4) + (-227.2 + 25.7) * (501.4 - 355.4)) * 0.5 * 0.00694$