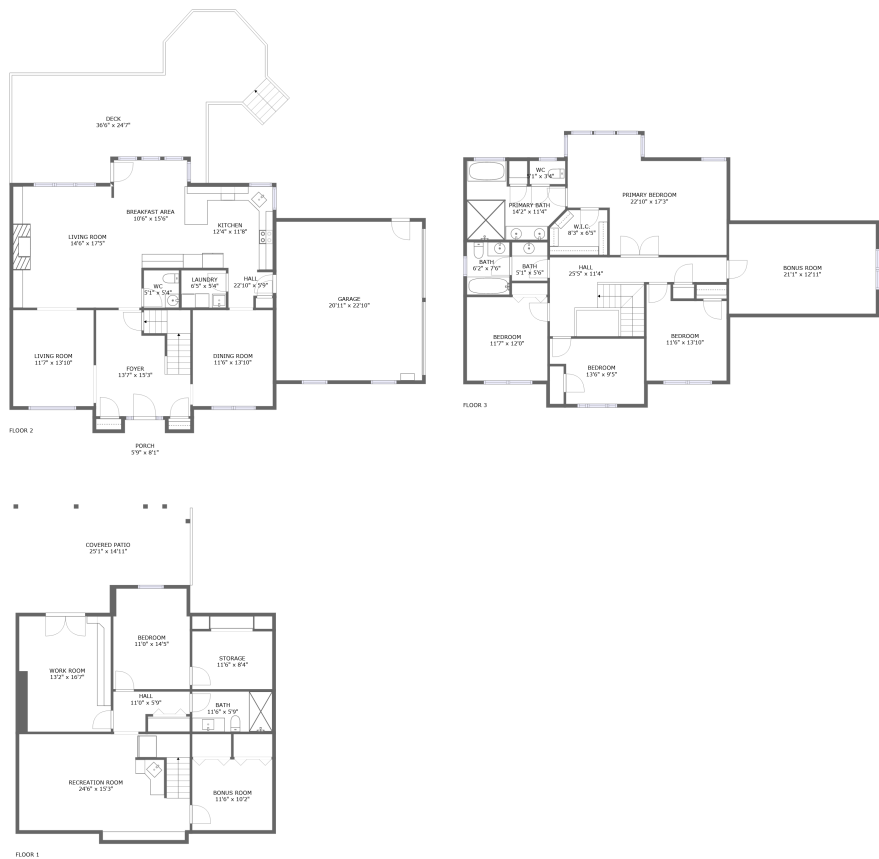


Home report

1258 Colby Drive, Forest, Bedford County, Virginia, United States, 24551



Total Area: 3828 sq. ft
Below Ground: 915 sq. ft, Floor 2: 1328 sq. ft, Floor 3: 1585 sq. ft
Excluded: Work Room 234 sq. ft, Storage 100 sq. ft, Outdoor Patio Covered 329 sq. ft, Garage 510 sq. ft, Outdoor Deck 547 sq. ft, Outdoor Porch 47 sq. ft, Low Ceiling 52 sq. ft

Property summary

 **3** Floors

 **5** Bedrooms

 **3** Bathrooms

Home report

1258 Colby Drive, Forest, Bedford County, Virginia, United States, 24551



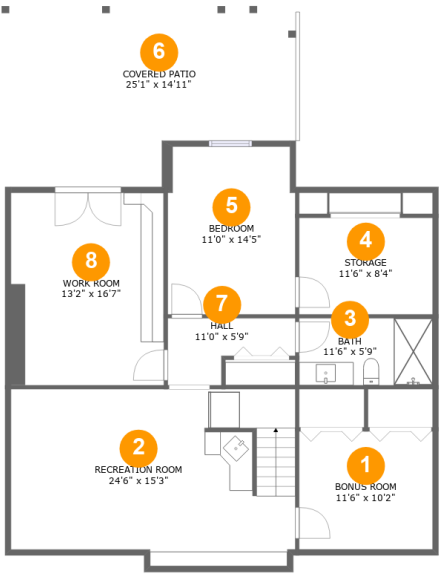
1
Half baths



1
Garages

Home report

1258 Colby Drive, Forest, Bedford County, Virginia, United States, 24551



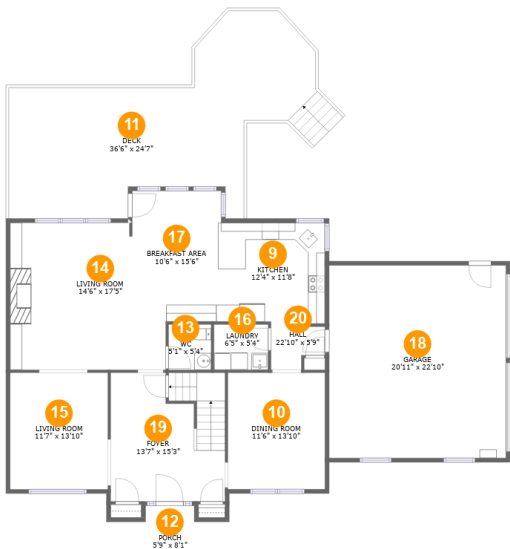
Room dimensions

Floor 1 Below ground Total:915sqft Excluded: 663sqft

#		Max Dimensions	sqft	Included
1	Bonus Room	11'6" x 10'2"	117 sq. ft	Yes
2	Recreation Room	24'6" x 15'3"	356 sq. ft	Yes
3	Bath	11'6" x 5'9"	66 sq. ft	Yes
4	Storage	11'6" x 8'4"	96 sq. ft	No
5	Bedroom	11'0" x 14'5"	155 sq. ft	Yes
6	Covered Patio	25'1" x 14'11"	329 sq. ft	No
7	Hall	11'0" x 5'9"	47 sq. ft	Yes
8	Work Room	13'2" x 16'7"	218 sq. ft	No

Home report

1258 Colby Drive, Forest, Bedford County, Virginia, United States, 24551



Room dimensions

Floor 2 Total:1328sqft Excluded: 1104sqft

#		Max Dimensions	sqft	Included
9	Kitchen	12'4" x 11'8"	144 sq. ft	Yes
10	Dining Room	11'6" x 13'10"	159 sq. ft	Yes
11	Deck	36'6" x 24'7"	547 sq. ft	No
12	Porch	5'9" x 8'1"	47 sq. ft	No
13	WC	5'1" x 5'4"	27 sq. ft	Yes
14	Living Room	14'6" x 17'5"	251 sq. ft	Yes
15	Living Room	11'7" x 13'10"	160 sq. ft	Yes
16	Laundry	6'5" x 5'4"	35 sq. ft	Yes
17	Breakfast Area	10'6" x 15'6"	163 sq. ft	Yes
18	Garage	20'11" x 22'10"	477 sq. ft	No
19	Foyer	13'7" x 15'3"	203 sq. ft	Yes

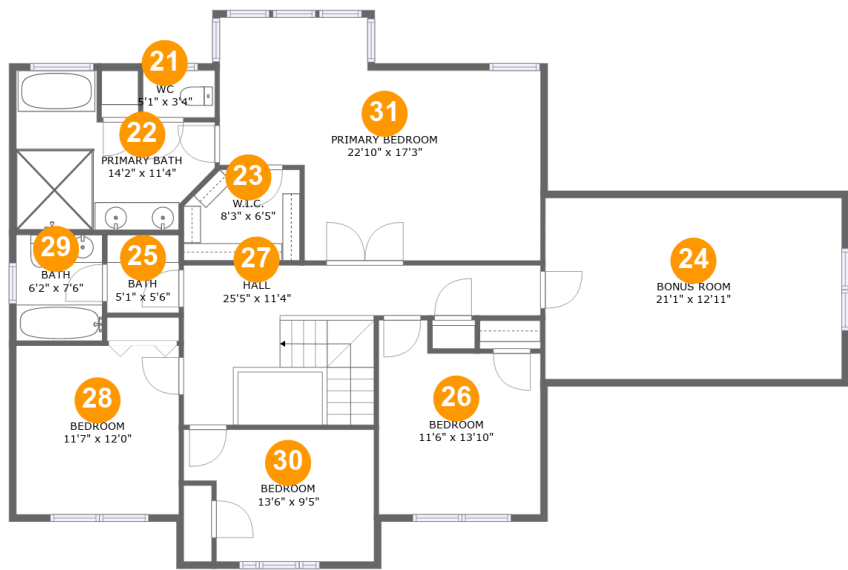
Home report

1258 Colby Drive, Forest, Bedford County, Virginia, United States, 24551

#		Max Dimensions	sqft	Included
20	Hall	22'10" x 5'9"	54 sq. ft	Yes

Home report

1258 Colby Drive, Forest, Bedford County, Virginia, United States, 24551



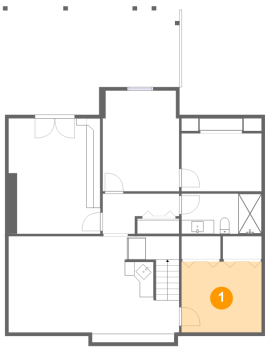
Room dimensions

Floor 3 Total:1585sqft Excluded: 52sqft

#		Max Dimensions	sqft	Included
21	WC	5'1" x 3'4"	17 sq. ft	Yes
22	Primary Bath	14'2" x 11'4"	121 sq. ft	Yes
23	W.I.C.	8'3" x 6'5"	50 sq. ft	Yes
24	Bonus Room	21'1" x 12'11"	241 sq. ft	Yes
25	Bath	5'1" x 5'6"	28 sq. ft	Yes
26	Bedroom	11'6" x 13'10"	140 sq. ft	Yes
27	Hall	25'5" x 11'4"	196 sq. ft	Yes
28	Bedroom	11'7" x 12'0"	139 sq. ft	Yes
29	Bath	6'2" x 7'6"	46 sq. ft	Yes
30	Bedroom	13'6" x 9'5"	114 sq. ft	Yes
31	Primary Bedroom	22'10" x 17'3"	307 sq. ft	Yes

1258 Colby Drive, Forest, Bedford County, Virginia, United States, 24551

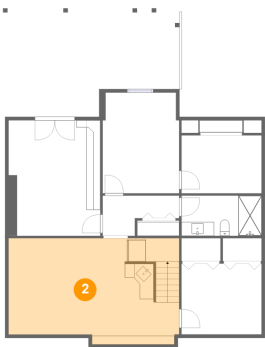
1 Floor 1 - Bonus Room



Max Dimensions: 11'6" x 10'2"
Calculated Area: 117 sq. ft
Included: Yes

Heated: Yes
Finished: Yes
Enclosed: Yes
Contiguous: Yes
Permitted: Yes
Wet space: No
Addition: No
Conversion: No

2 Floor 1 - Recreation Room

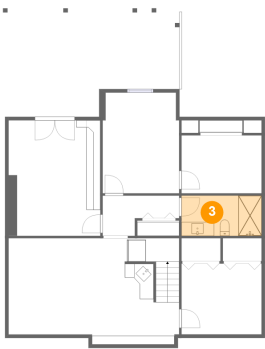


Max Dimensions: 24'6" x 15'3"
Calculated Area: 356 sq. ft
Included: Yes

Heated: Yes
Finished: Yes
Enclosed: Yes
Contiguous: Yes
Permitted: Yes
Wet space: No
Addition: No
Conversion: No

1258 Colby Drive, Forest, Bedford County, Virginia, United States, 24551

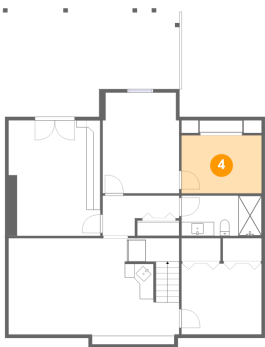
3 Floor 1 - Bath



Max Dimensions: 11'6" x 5'9"
Calculated Area: 66 sq. ft
Included: Yes

Heated: Yes
Finished: Yes
Enclosed: Yes
Contiguous: Yes
Permitted: Yes
Wet space: Yes
Addition: No
Conversion: No

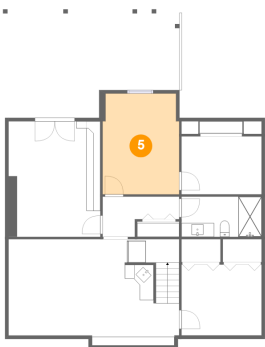
4 Floor 1 - Storage



Max Dimensions: 11'6" x 8'4"
Calculated Area: 96 sq. ft
Included: No

Heated: No
Finished: No
Enclosed: No
Contiguous: No
Permitted: Yes
Wet space: No
Addition: No
Conversion: No

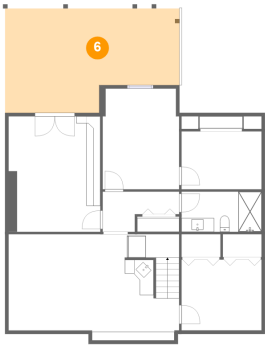
5 Floor 1 - Bedroom



Max Dimensions: 11'0" x 14'5"
Calculated Area: 155 sq. ft
Included: Yes

Heated: Yes
Finished: Yes
Enclosed: Yes
Contiguous: Yes
Permitted: Yes
Wet space: No
Addition: No
Conversion: No

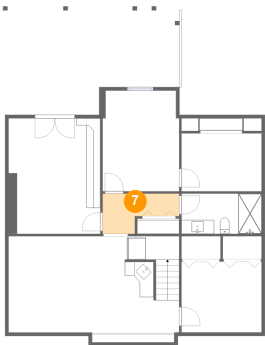
6 Floor 1 - Covered Patio



Max Dimensions: 25'1" x 14'11"
Calculated Area: 329 sq. ft
Included: No

Heated: No
Finished: Yes
Enclosed: No
Contiguous: Yes
Permitted: Yes
Wet space: No
Addition: No
Conversion: No

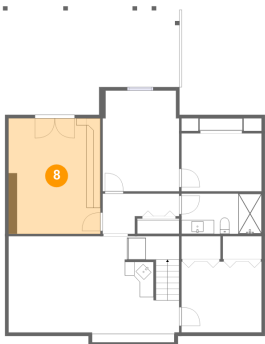
7 Floor 1 - Hall



Max Dimensions: 11'0" x 5'9"
Calculated Area: 47 sq. ft
Included: Yes

Heated: Yes
Finished: Yes
Enclosed: Yes
Contiguous: Yes
Permitted: Yes
Wet space: No
Addition: No
Conversion: No

8 Floor 1 - Work Room



Max Dimensions: 13'2" x 16'7"
Calculated Area: 218 sq. ft
Included: No

Heated: No
Finished: Yes
Enclosed: No
Contiguous: Yes
Permitted: Yes
Wet space: No
Addition: No
Conversion: No

9 Floor 2 - Kitchen



Max Dimensions: 12'4" x 11'8"
Calculated Area: 144 sq. ft
Included: Yes

Heated: Yes
Finished: Yes
Enclosed: Yes
Contiguous: Yes
Permitted: Yes
Wet space: No
Addition: No
Conversion: No

10 Floor 2 - Dining Room



Max Dimensions: 11'6" x 13'10"
Calculated Area: 159 sq. ft
Included: Yes

Heated: Yes
Finished: Yes
Enclosed: Yes
Contiguous: Yes
Permitted: Yes
Wet space: No
Addition: No
Conversion: No

11 Floor 2 - Deck



Max Dimensions: 36'6" x 24'7"
Calculated Area: 547 sq. ft
Included: No

Heated: No
Finished: Yes
Enclosed: No
Contiguous: Yes
Permitted: Yes
Wet space: No
Addition: No
Conversion: No

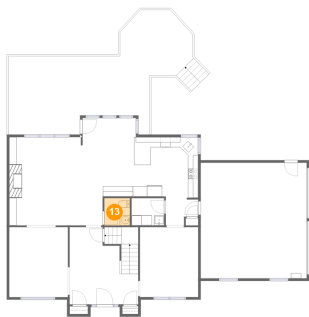
12 Floor 2 - Porch



Max Dimensions: 5'9" x 8'1"
Calculated Area: 47 sq. ft
Included: No

Heated: No
Finished: Yes
Enclosed: No
Contiguous: Yes
Permitted: Yes
Wet space: No
Addition: No
Conversion: No

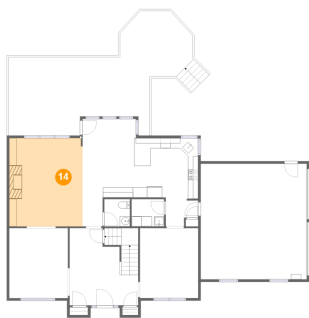
13 Floor 2 - WC



Max Dimensions: 5'1" x 5'4"
Calculated Area: 27 sq. ft
Included: Yes

Heated: Yes
Finished: Yes
Enclosed: Yes
Contiguous: Yes
Permitted: Yes
Wet space: Yes
Addition: No
Conversion: No

14 Floor 2 - Living Room



Max Dimensions: 14'6" x 17'5"
Calculated Area: 251 sq. ft
Included: Yes

Heated: Yes
Finished: Yes
Enclosed: Yes
Contiguous: Yes
Permitted: Yes
Wet space: No
Addition: No
Conversion: No

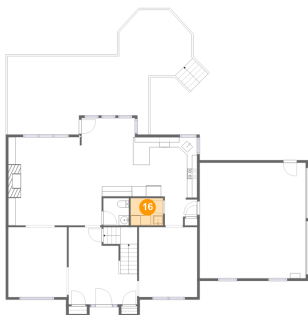
15 Floor 2 - Living Room



Max Dimensions: 11'7" x 13'10"
Calculated Area: 160 sq. ft
Included: Yes

Heated: Yes
Finished: Yes
Enclosed: Yes
Contiguous: Yes
Permitted: Yes
Wet space: No
Addition: No
Conversion: No

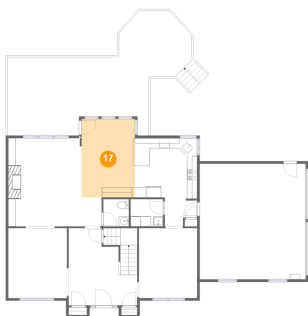
16 Floor 2 - Laundry



Max Dimensions: 6'5" x 5'4"
Calculated Area: 35 sq. ft
Included: Yes

Heated: Yes
Finished: Yes
Enclosed: Yes
Contiguous: Yes
Permitted: Yes
Wet space: No
Addition: No
Conversion: No

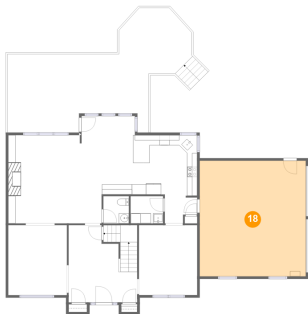
17 Floor 2 - Breakfast Area



Max Dimensions: 10'6" x 15'6"
Calculated Area: 163 sq. ft
Included: Yes

Heated: Yes
Finished: Yes
Enclosed: Yes
Contiguous: Yes
Permitted: Yes
Wet space: No
Addition: No
Conversion: No

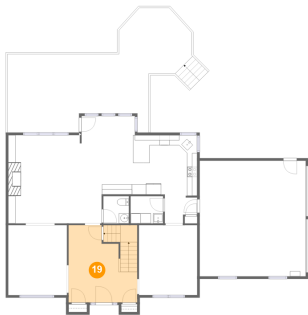
18 Floor 2 - Garage



Max Dimensions: 20'11" x 22'10"
Calculated Area: 477 sq. ft
Included: No

Heated: No
Finished: No
Enclosed: Yes
Contiguous: Yes
Permitted: Yes
Wet space: No
Addition: No
Conversion: No

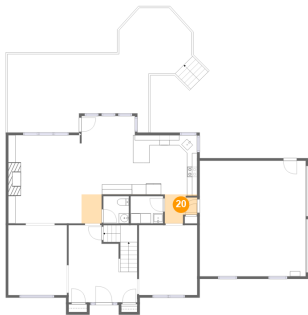
19 Floor 2 - Foyer



Max Dimensions: 13'7" x 15'3"
Calculated Area: 203 sq. ft
Included: Yes

Heated: Yes
Finished: Yes
Enclosed: Yes
Contiguous: Yes
Permitted: Yes
Wet space: No
Addition: No
Conversion: No

20 Floor 2 - Hall

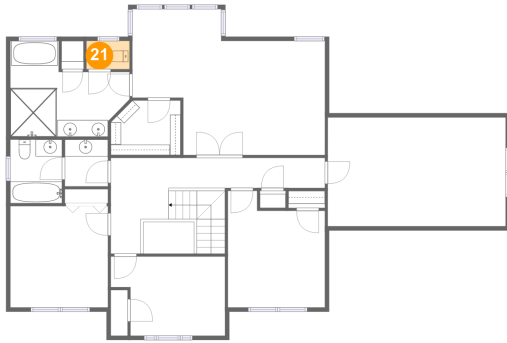


Max Dimensions: 22'10" x 5'9"
Calculated Area: 54 sq. ft
Included: Yes

Heated: Yes
Finished: Yes
Enclosed: Yes
Contiguous: Yes
Permitted: Yes
Wet space: No
Addition: No
Conversion: No

1258 Colby Drive, Forest, Bedford County, Virginia, United States, 24551

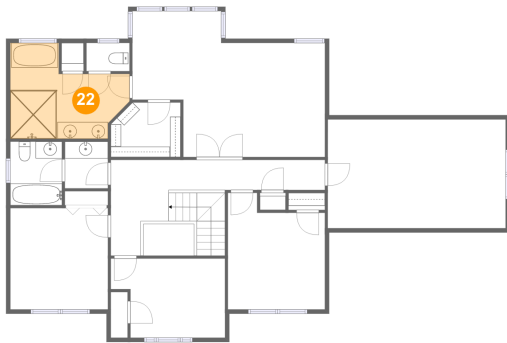
21 Floor 3 - WC



Max Dimensions: 5'1" x 3'4"
Calculated Area: 17 sq. ft
Included: Yes

Heated: Yes
Finished: Yes
Enclosed: Yes
Contiguous: Yes
Permitted: Yes
Wet space: Yes
Addition: No
Conversion: No

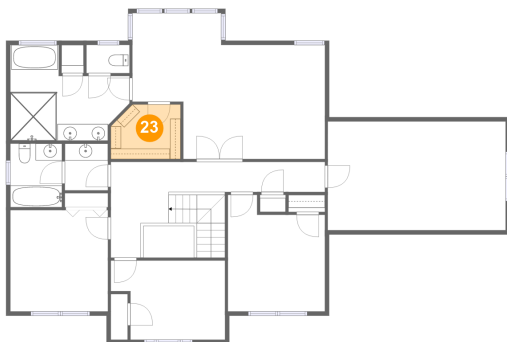
22 Floor 3 - Primary Bath



Max Dimensions: 14'2" x 11'4"
Calculated Area: 121 sq. ft
Included: Yes

Heated: Yes
Finished: Yes
Enclosed: Yes
Contiguous: Yes
Permitted: Yes
Wet space: Yes
Addition: No
Conversion: No

23 Floor 3 - W.I.C.

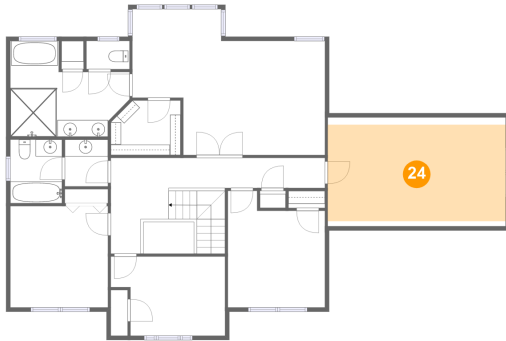


Max Dimensions: 8'3" x 6'5"
Calculated Area: 50 sq. ft
Included: Yes

Heated: Yes
Finished: Yes
Enclosed: Yes
Contiguous: Yes
Permitted: Yes
Wet space: No
Addition: No
Conversion: No

1258 Colby Drive, Forest, Bedford County, Virginia, United States, 24551

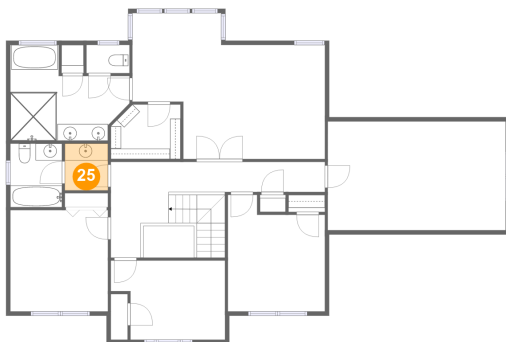
24 Floor 3 - Bonus Room



Max Dimensions: 21'1" x 12'11"
Calculated Area: 241 sq. ft
Included: Yes

Heated: Yes
Finished: Yes
Enclosed: Yes
Contiguous: Yes
Permitted: Yes
Wet space: No
Addition: No
Conversion: No

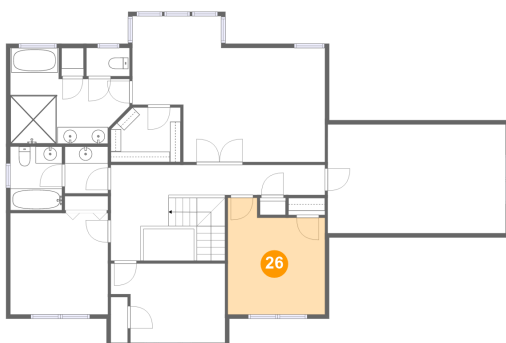
25 Floor 3 - Bath



Max Dimensions: 5'1" x 5'6"
Calculated Area: 28 sq. ft
Included: Yes

Heated: Yes
Finished: Yes
Enclosed: Yes
Contiguous: Yes
Permitted: Yes
Wet space: Yes
Addition: No
Conversion: No

26 Floor 3 - Bedroom

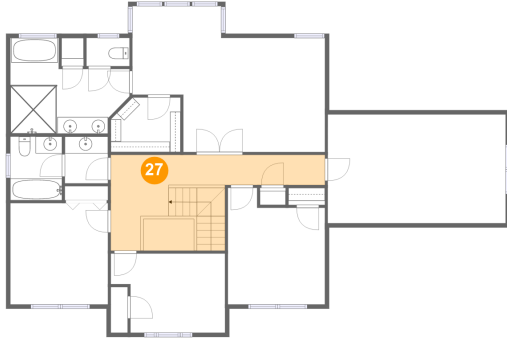


Max Dimensions: 11'6" x 13'10"
Calculated Area: 140 sq. ft
Included: Yes

Heated: Yes
Finished: Yes
Enclosed: Yes
Contiguous: Yes
Permitted: Yes
Wet space: No
Addition: No
Conversion: No

1258 Colby Drive, Forest, Bedford County, Virginia, United States, 24551

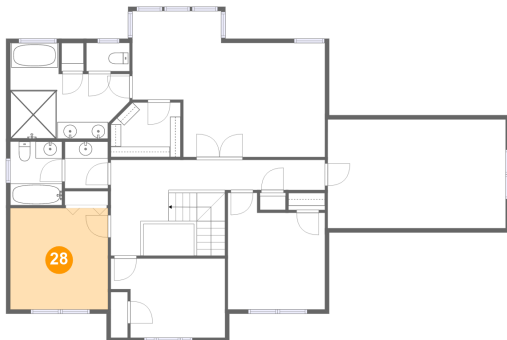
27 Floor 3 - Hall



Max Dimensions: 25'5" x 11'4"
Calculated Area: 196 sq. ft
Included: Yes

Heated: Yes
Finished: Yes
Enclosed: Yes
Contiguous: Yes
Permitted: Yes
Wet space: No
Addition: No
Conversion: No

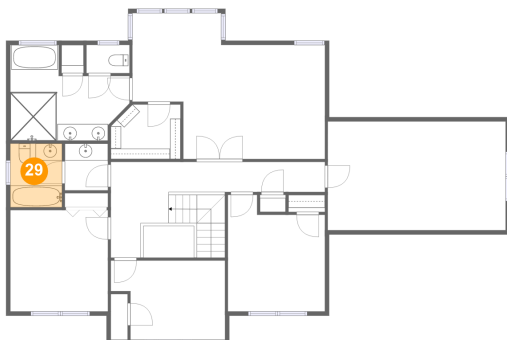
28 Floor 3 - Bedroom



Max Dimensions: 11'7" x 12'0"
Calculated Area: 139 sq. ft
Included: Yes

Heated: Yes
Finished: Yes
Enclosed: Yes
Contiguous: Yes
Permitted: Yes
Wet space: No
Addition: No
Conversion: No

29 Floor 3 - Bath

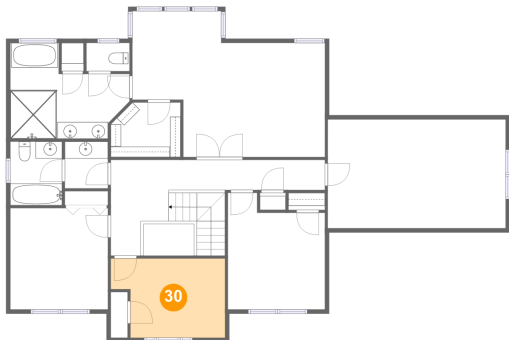


Max Dimensions: 6'2" x 7'6"
Calculated Area: 46 sq. ft
Included: Yes

Heated: Yes
Finished: Yes
Enclosed: Yes
Contiguous: Yes
Permitted: Yes
Wet space: Yes
Addition: No
Conversion: No

1258 Colby Drive, Forest, Bedford County, Virginia, United States, 24551

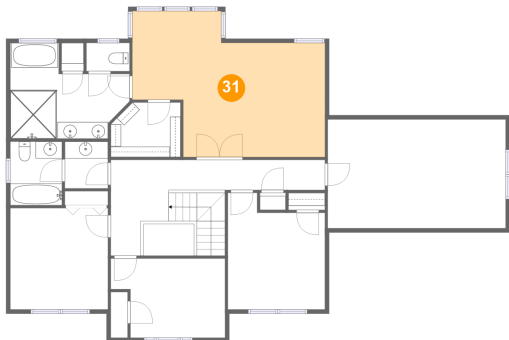
30 Floor 3 - Bedroom



Max Dimensions: 13'6" x 9'5"
Calculated Area: 114 sq. ft
Included: Yes

Heated: Yes
Finished: Yes
Enclosed: Yes
Contiguous: Yes
Permitted: Yes
Wet space: No
Addition: No
Conversion: No

31 Floor 3 - Primary Bedroom



Max Dimensions: 22'10" x 17'3"
Calculated Area: 307 sq. ft
Included: Yes

Heated: Yes
Finished: Yes
Enclosed: Yes
Contiguous: Yes
Permitted: Yes
Wet space: No
Addition: No
Conversion: No