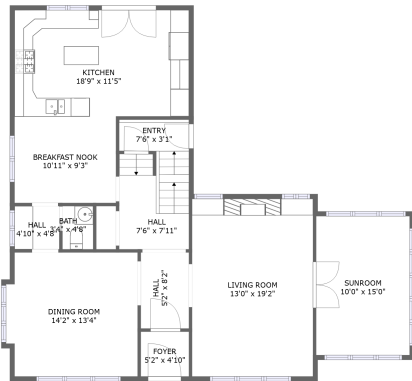
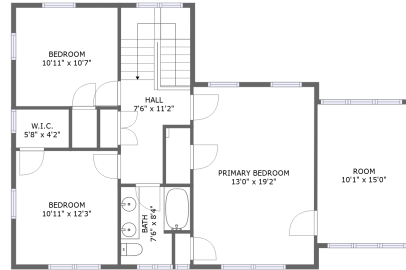


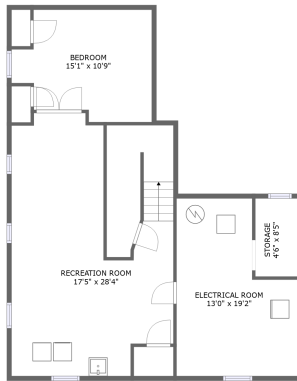
# 1449 Lincoln Ave, St Paul, Minnesota, United States



FLOOR 2



FLOOR 3

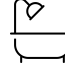



FLOOR 1

## Property Summary

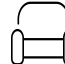
 **0** garages

 **4** bedrooms

 **1** bathrooms

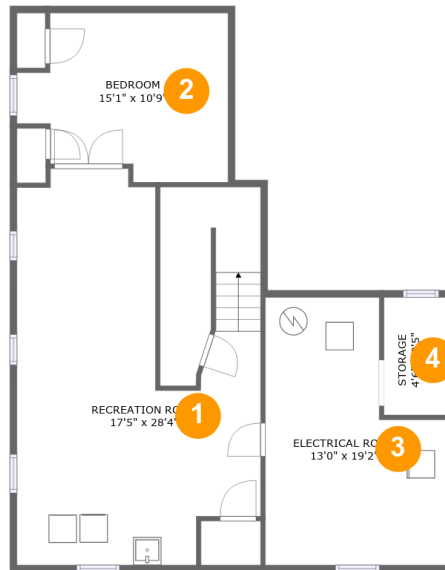
 **1** half baths

 **3** floors

 **2,955** Gross Living Area sqft

 **3,227** total sqft

# 1449 Lincoln Ave, St Paul, Minnesota, United States



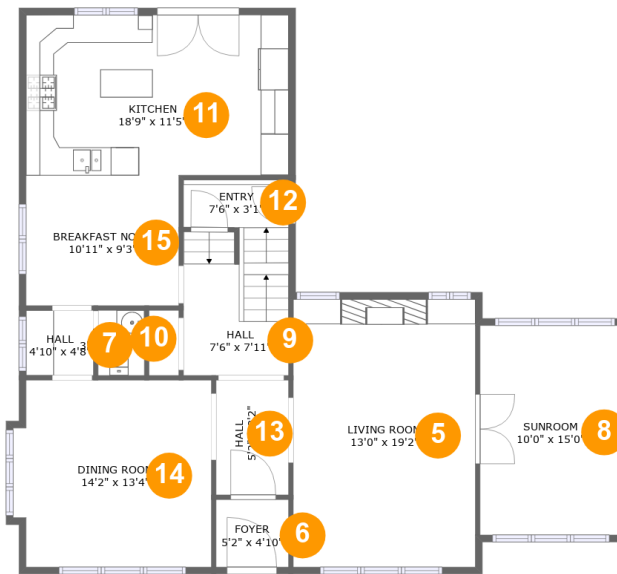
## Room Dimensions

Floor 1

Total sqft: 985

Living area: 713

#	Room name	Dimensions	Area (sqft)	Counted as Living Area
1	Recreation Room	17'5" x 28'4"	452 sq. ft	Yes
2	Bedroom	15'1" x 10'9"	155 sq. ft	Yes
3	Electrical Room	13'0" x 19'2"	206 sq. ft	No
4	Storage	4'6" x 8'5"	38 sq. ft	No

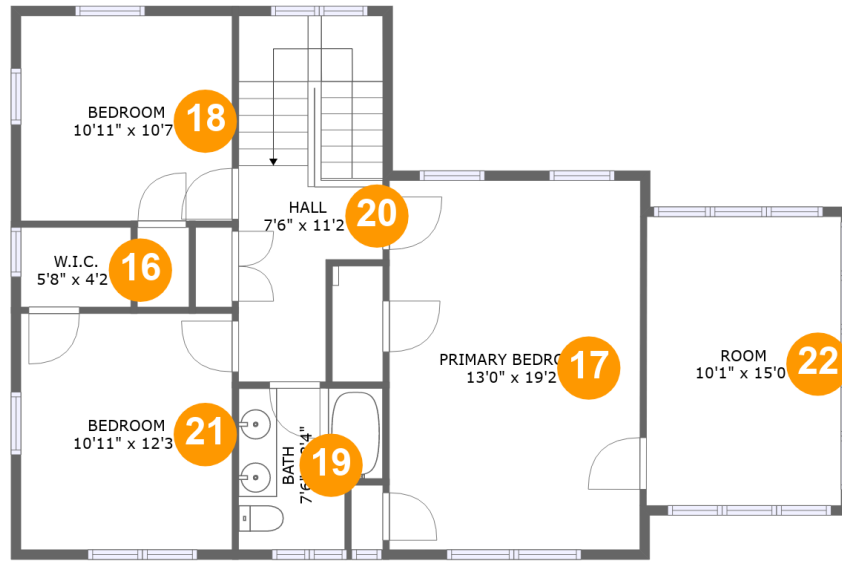
**1449 Lincoln Ave, St Paul, Minnesota, United States****Room Dimensions****Floor 2****Total sqft: 1241****Living area: 1241**

#	Room name	Dimensions	Area (sqft)	Counted as Living Area
5	Living Room	13'0" x 19'2"	249 sq. ft	Yes
6	Foyer	5'2" x 4'10"	25 sq. ft	Yes
7	Hall	4'10" x 4'8"	22 sq. ft	Yes
8	Sunroom	10'0" x 15'0"	151 sq. ft	Yes
9	Hall	7'6" x 7'11"	80 sq. ft	Yes
10	Bath	3'4" x 4'8"	15 sq. ft	Yes
11	Kitchen	18'9" x 11'5"	215 sq. ft	Yes
12	Entry	7'6" x 3'1"	25 sq. ft	Yes
13	Hall	5'2" x 8'2"	42 sq. ft	Yes
14	Dining Room	14'2" x 13'4"	183 sq. ft	Yes
15	Breakfast Nook	10'11" x 9'3"	102 sq. ft	Yes

Scan captured on Wed, 26 Jun 2024 17:54:25 GMT

Information is calculated by CubiCasa technology; deemed highly reliable but not guaranteed.

# 1449 Lincoln Ave, St Paul, Minnesota, United States



## Room Dimensions

Floor 3

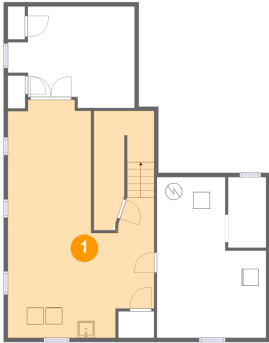
Total sqft: 1001

Living area: 1001

#	Room name	Dimensions	Area (sqft)	Counted as Living Area
16	W.i.c.	5'8" x 4'2"	24 sq. ft	Yes
17	Primary Bedroom	13'0" x 19'2"	249 sq. ft	Yes
18	Bedroom	10'11" x 10'7"	116 sq. ft	Yes
19	Bath	7'6" x 8'4"	55 sq. ft	Yes
20	Hall	7'6" x 11'2"	123 sq. ft	Yes
21	Bedroom	10'11" x 12'3"	134 sq. ft	Yes
22	Room	10'1" x 15'0"	151 sq. ft	Yes

# 1449 Lincoln Ave, St Paul, Minnesota, United States

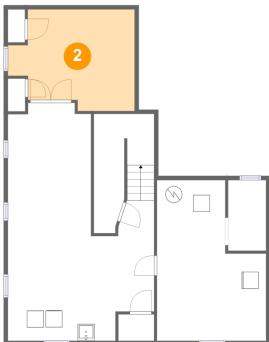
## 1 Floor 1 - Recreation Room



Dimensions: 17'5" x 28'4"  
Area: 452 sq. ft  
Counted as Living Area:  
Yes

Heated: Yes  
Finished: Yes  
Enclosed: Yes  
Contiguous:  
Yes  
Permitted: Yes  
Wet Space: No  
Addition: No  
Conversion: No

## 2 Floor 1 - Bedroom

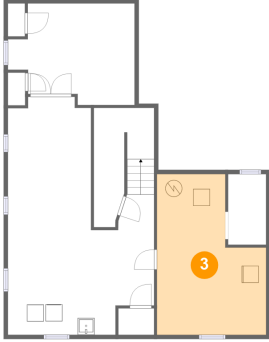


Dimensions: 15'1" x 10'9"  
Area: 155 sq. ft  
Counted as Living Area:  
Yes

Heated: Yes  
Finished: Yes  
Enclosed: Yes  
Contiguous:  
Yes  
Permitted: Yes  
Wet Space: No  
Addition: No  
Conversion: No

# 1449 Lincoln Ave, St Paul, Minnesota, United States

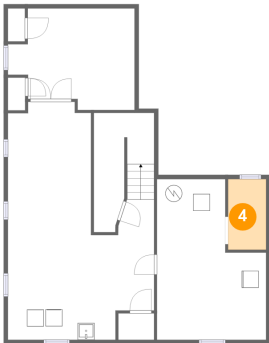
## 3 Floor 1 - Electrical Room



Dimensions: 13'0" x 19'2"  
Area: 206 sq. ft  
Counted as Living Area: No

Heated: No  
Finished: No  
Enclosed: Yes  
Contiguous: Yes  
Permitted: Yes  
Wet Space: No  
Addition: No  
Conversion: No

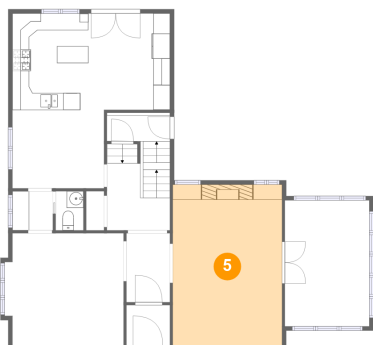
## 4 Floor 1 - Storage



Dimensions: 4'6" x 8'5"  
Area: 38 sq. ft  
Counted as Living Area: No

Heated: No  
Finished: No  
Enclosed: No  
Contiguous: Yes  
Permitted: Yes  
Wet Space: No  
Addition: No  
Conversion: No

## 5 Floor 2 - Living Room

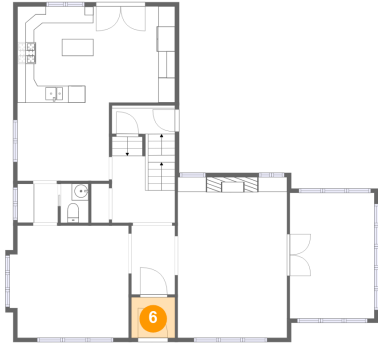


Dimensions: 13'0" x 19'2"  
Area: 249 sq. ft  
Counted as Living Area: Yes

Heated: Yes  
Finished: Yes  
Enclosed: Yes  
Contiguous: Yes  
Permitted: Yes  
Wet Space: No  
Addition: No  
Conversion: No

# 1449 Lincoln Ave, St Paul, Minnesota, United States

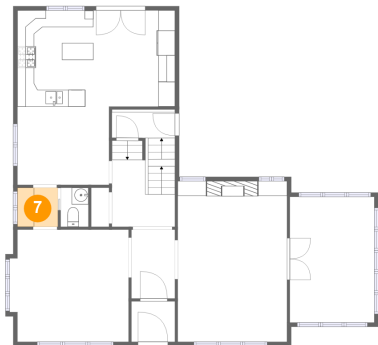
## 6 Floor 2 - Foyer



Dimensions: 5'2" x 4'10"  
Area: 25 sq. ft  
Counted as Living Area:  
Yes

Heated: Yes  
Finished: Yes  
Enclosed: Yes  
Contiguous:  
Yes  
Permitted: Yes  
Wet Space: No  
Addition: No  
Conversion: No

## 7 Floor 2 - Hall



Dimensions: 4'10" x 4'8"  
Area: 22 sq. ft  
Counted as Living Area:  
Yes

Heated: Yes  
Finished: Yes  
Enclosed: Yes  
Contiguous:  
Yes  
Permitted: Yes  
Wet Space: No  
Addition: No  
Conversion: No

## 8 Floor 2 - Sunroom

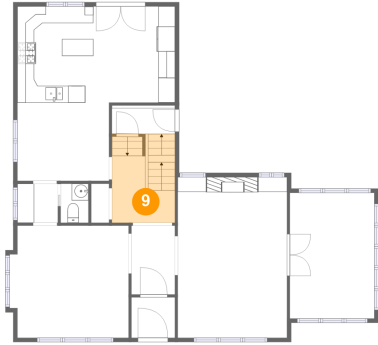


Dimensions: 10'0" x 15'0"  
Area: 151 sq. ft  
Counted as Living Area:  
Yes

Heated: Yes  
Finished: Yes  
Enclosed: Yes  
Contiguous:  
Yes  
Permitted: Yes  
Wet Space: No  
Addition: No  
Conversion: No

# 1449 Lincoln Ave, St Paul, Minnesota, United States

## 9 Floor 2 - Hall



Dimensions: 7'6" x 7'11"  
Area: 80 sq. ft  
Counted as Living Area:  
Yes

Heated: Yes  
Finished: Yes  
Enclosed: Yes  
Contiguous:  
Yes  
Permitted: Yes  
Wet Space: No  
Addition: No  
Conversion: No

## 10 Floor 2 - Bath



Dimensions: 3'4" x 4'8"  
Area: 15 sq. ft  
Counted as Living Area:  
Yes

Heated: Yes  
Finished: Yes  
Enclosed: Yes  
Contiguous:  
Yes  
Permitted: Yes  
Wet Space: Yes  
Addition: No  
Conversion: No

## 11 Floor 2 - Kitchen



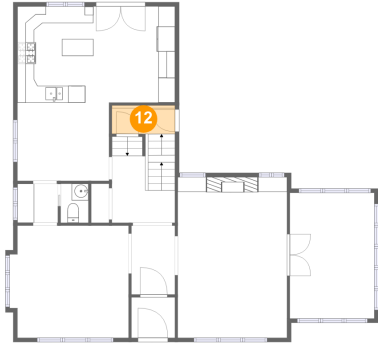
Dimensions: 18'9" x 11'5"  
Area: 215 sq. ft  
Counted as Living Area:  
Yes

Heated: Yes  
Finished: Yes  
Enclosed: Yes  
Contiguous:  
Yes  
Permitted: Yes  
Wet Space: No  
Addition: No  
Conversion: No



# 1449 Lincoln Ave, St Paul, Minnesota, United States

## 12 Floor 2 - Entry



Dimensions: 7'6" x 3'1"  
Area: 25 sq. ft  
Counted as Living Area:  
Yes

Heated: Yes  
Finished: Yes  
Enclosed: Yes  
Contiguous:  
Yes  
Permitted: Yes  
Wet Space: No  
Addition: No  
Conversion: No

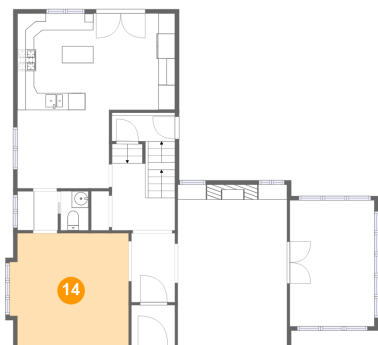
## 13 Floor 2 - Hall



Dimensions: 5'2" x 8'2"  
Area: 42 sq. ft  
Counted as Living Area:  
Yes

Heated: Yes  
Finished: Yes  
Enclosed: Yes  
Contiguous:  
Yes  
Permitted: Yes  
Wet Space: No  
Addition: No  
Conversion: No

## 14 Floor 2 - Dining Room

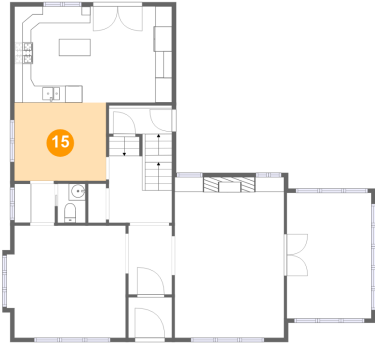


Dimensions: 14'2" x 13'4"  
Area: 183 sq. ft  
Counted as Living Area:  
Yes

Heated: Yes  
Finished: Yes  
Enclosed: Yes  
Contiguous:  
Yes  
Permitted: Yes  
Wet Space: No  
Addition: No  
Conversion: No

# 1449 Lincoln Ave, St Paul, Minnesota, United States

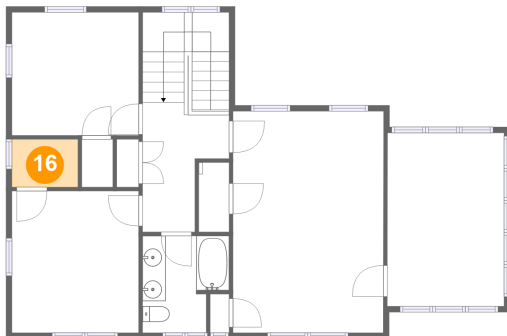
## 15 Floor 2 - Breakfast Nook



Dimensions: 10'11" x 9'3"  
Area: 102 sq. ft  
Counted as Living Area:  
Yes

Heated: Yes  
Finished: Yes  
Enclosed: Yes  
Contiguous:  
Yes  
Permitted: Yes  
Wet Space: No  
Addition: No  
Conversion: No

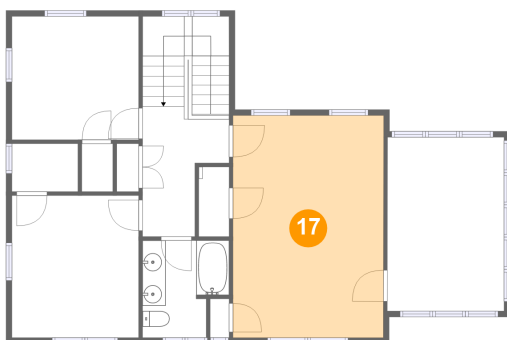
## 16 Floor 3 - W.i.c.



Dimensions: 5'8" x 4'2"  
Area: 24 sq. ft  
Counted as Living Area:  
Yes

Heated: Yes  
Finished: Yes  
Enclosed: Yes  
Contiguous:  
Yes  
Permitted: Yes  
Wet Space: No  
Addition: No  
Conversion: No

## 17 Floor 3 - Primary Bedroom

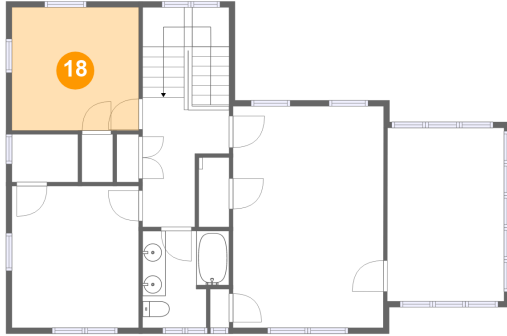


Dimensions: 13'0" x 19'2"  
Area: 249 sq. ft  
Counted as Living Area:  
Yes

Heated: Yes  
Finished: Yes  
Enclosed: Yes  
Contiguous:  
Yes  
Permitted: Yes  
Wet Space: No  
Addition: No  
Conversion: No

# 1449 Lincoln Ave, St Paul, Minnesota, United States

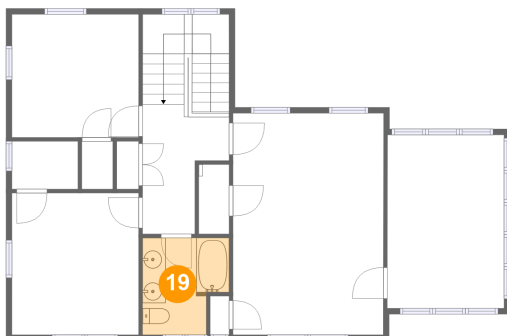
## 18 Floor 3 - Bedroom



Dimensions: 10'11" x 10'7"  
Area: 116 sq. ft  
Counted as Living Area:  
Yes

Heated: Yes  
Finished: Yes  
Enclosed: Yes  
Contiguous:  
Yes  
Permitted: Yes  
Wet Space: No  
Addition: No  
Conversion: No

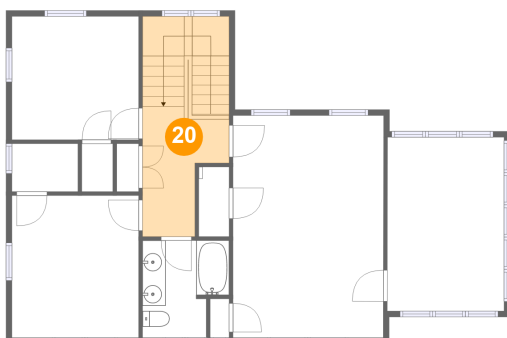
## 19 Floor 3 - Bath



Dimensions: 7'6" x 8'4"  
Area: 55 sq. ft  
Counted as Living Area:  
Yes

Heated: Yes  
Finished: Yes  
Enclosed: Yes  
Contiguous:  
Yes  
Permitted: Yes  
Wet Space: Yes  
Addition: No  
Conversion: No

## 20 Floor 3 - Hall

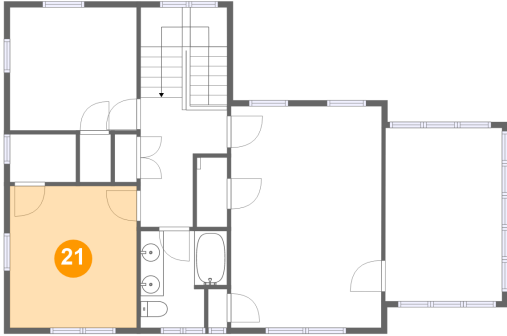


Dimensions: 7'6" x 11'2"  
Area: 123 sq. ft  
Counted as Living Area:  
Yes

Heated: Yes  
Finished: Yes  
Enclosed: Yes  
Contiguous:  
Yes  
Permitted: Yes  
Wet Space: No  
Addition: No  
Conversion: No

# 1449 Lincoln Ave, St Paul, Minnesota, United States

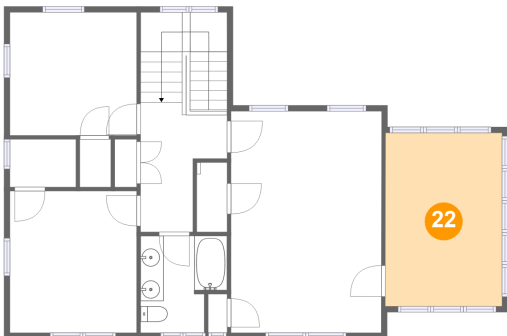
## 21 Floor 3 - Bedroom



Dimensions: 10'11" x 12'3"  
Area: 134 sq. ft  
Counted as Living Area:  
Yes

Heated: Yes  
Finished: Yes  
Enclosed: Yes  
Contiguous:  
Yes  
Permitted: Yes  
Wet Space: No  
Addition: No  
Conversion: No

## 22 Floor 3 - Room



Dimensions: 10'1" x 15'0"  
Area: 151 sq. ft  
Counted as Living Area:  
Yes

Heated: Yes  
Finished: Yes  
Enclosed: Yes  
Contiguous:  
Yes  
Permitted: Yes  
Wet Space: No  
Addition: No  
Conversion: No