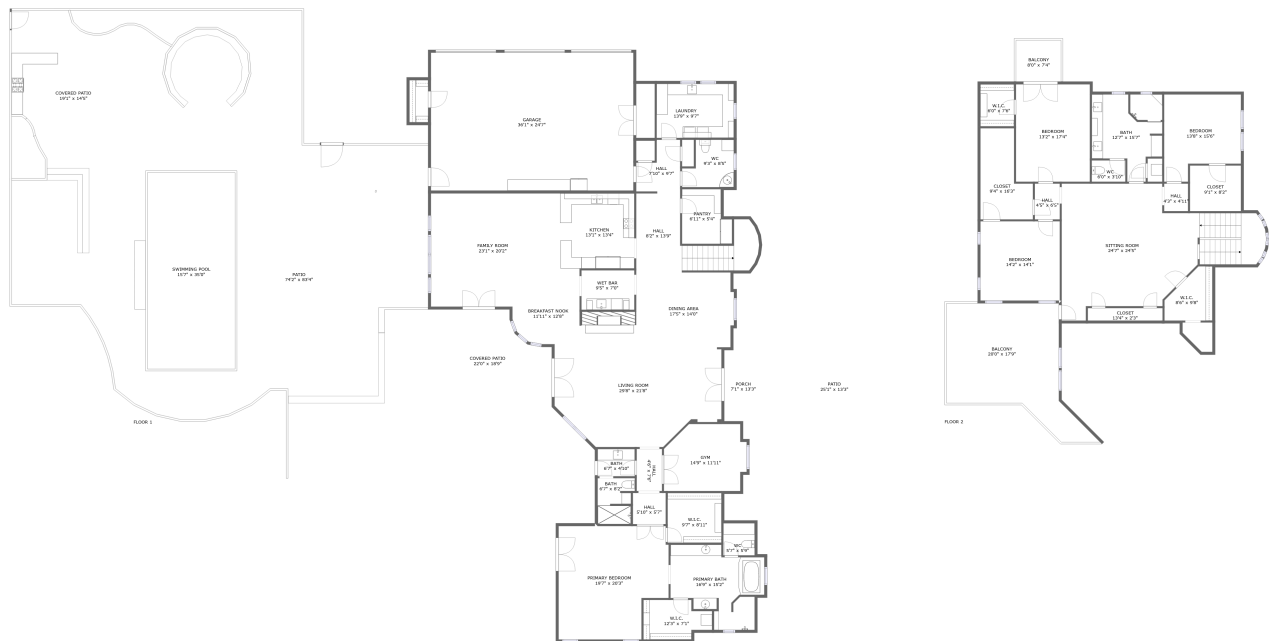


4078 Sage Springs Cir, Kimberly, ID, US



Property summary



1 Garages



4
Bedrooms



3 Bathrooms



1

Half baths



2 Floors



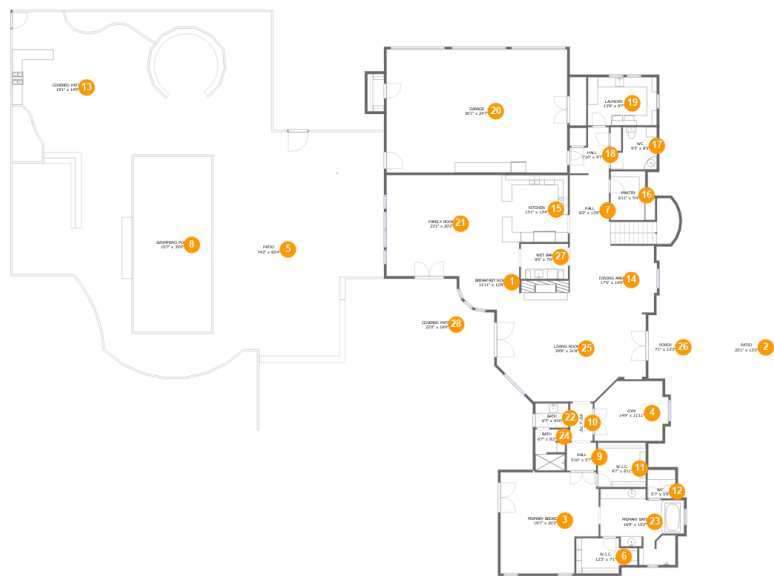
5,382
Gross living
area sqft



12,434
Total sqft

Home report

4078 Sage Springs Cir,Kimberly,ID,US



Room dimensions

Floor 1 Total sqft: 10007 Living area: 3417

| # | | Dimensions | sqft | Counted as living area |
|----|-----------------|----------------|-------------|------------------------|
| 1 | Breakfast Nook | 11'11" x 12'8" | 119 sq. ft | Yes |
| 2 | Patio | 25'1" x 13'3" | 333 sq. ft | No |
| 3 | Primary Bedroom | 19'7" x 20'3" | 359 sq. ft | Yes |
| 4 | Gym | 14'9" x 11'11" | 159 sq. ft | Yes |
| 5 | Patio | 74'2" x 83'4" | 4896 sq. ft | No |
| 6 | W.I.C. | 12'3" x 7'1" | 73 sq. ft | Yes |
| 7 | Hall | 8'2" x 13'9" | 186 sq. ft | Yes |
| 8 | Swimming Pool | 15'7" x 35'0" | 546 sq. ft | No |
| 9 | Hall | 5'10" x 5'7" | 33 sq. ft | Yes |
| 10 | Hall | 4'6" x 7'6" | 34 sq. ft | Yes |
| 11 | W.I.C. | 9'7" x 8'11" | 85 sq. ft | Yes |

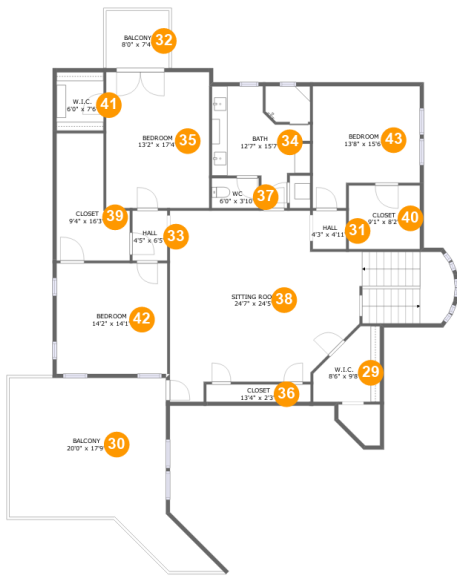
Home report

4078 Sage Springs Cir, Kimberly, ID, US

| # | | Dimensions | sqft | Counted as living area |
|----|---------------|---------------|------------|------------------------|
| 12 | WC | 5'7" x 5'9" | 32 sq. ft | Yes |
| 13 | Covered Patio | 19'1" x 14'5" | 314 sq. ft | No |
| 14 | Dining Area | 17'5" x 14'0" | 235 sq. ft | Yes |
| 15 | Kitchen | 13'1" x 13'4" | 176 sq. ft | Yes |
| 16 | Pantry | 6'11" x 5'4" | 76 sq. ft | Yes |
| 17 | WC | 9'3" x 8'5" | 65 sq. ft | Yes |
| 18 | Hall | 7'10" x 9'7" | 59 sq. ft | Yes |
| 19 | Laundry | 13'9" x 9'7" | 132 sq. ft | Yes |
| 20 | Garage | 36'1" x 24'7" | 886 sq. ft | No |
| 21 | Family Room | 23'1" x 20'2" | 437 sq. ft | Yes |
| 22 | Bath | 6'7" x 4'10" | 32 sq. ft | Yes |
| 23 | Primary Bath | 16'9" x 15'2" | 186 sq. ft | Yes |
| 24 | Bath | 6'7" x 8'2" | 48 sq. ft | Yes |
| 25 | Living Room | 29'8" x 21'8" | 531 sq. ft | Yes |
| 26 | Porch | 7'1" x 13'3" | 92 sq. ft | No |
| 27 | Wet Bar | 9'5" x 7'0" | 66 sq. ft | Yes |
| 28 | Covered Patio | 22'0" x 18'9" | 511 sq. ft | No |

Home report

4078 Sage Springs Cir,Kimberly,ID,US



Room dimensions

Floor 2 Total sqft: 2427 Living area: 1965

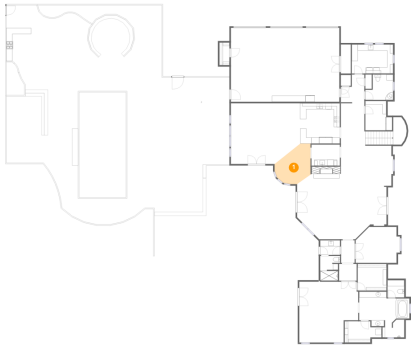
| # | | Dimensions | sqft | Counted as living area |
|----|--------------|---------------|------------|------------------------|
| 29 | W.I.C. | 8'6" x 9'8" | 64 sq. ft | Yes |
| 30 | Balcony | 20'0" x 17'9" | 403 sq. ft | No |
| 31 | Hall | 4'3" x 4'11" | 21 sq. ft | Yes |
| 32 | Balcony | 8'0" x 7'4" | 59 sq. ft | No |
| 33 | Hall | 4'5" x 6'5" | 28 sq. ft | Yes |
| 34 | Bath | 12'7" x 15'7" | 153 sq. ft | Yes |
| 35 | Bedroom | 13'2" x 17'4" | 228 sq. ft | Yes |
| 36 | Closet | 13'4" x 2'3" | 30 sq. ft | Yes |
| 37 | WC | 6'0" x 3'10" | 23 sq. ft | Yes |
| 38 | Sitting Room | 24'7" x 24'5" | 586 sq. ft | Yes |
| 39 | Closet | 9'4" x 16'3" | 119 sq. ft | Yes |

Home report

4078 Sage Springs Cir, Kimberly, ID, US

| # | | Dimensions | sqft | Counted as living area |
|----|---------|---------------|------------|------------------------|
| 40 | Closet | 9'1" x 8'2" | 74 sq. ft | Yes |
| 41 | W.I.C. | 6'0" x 7'6" | 45 sq. ft | Yes |
| 42 | Bedroom | 14'2" x 14'1" | 200 sq. ft | Yes |
| 43 | Bedroom | 13'8" x 15'6" | 182 sq. ft | Yes |

1 Floor 1 - Breakfast Nook



Dimensions: 11'11" x 12'8"
Area: 119 sq. ft
Counted as living area: Yes

Heated: Yes
Finished: Yes
Enclosed: Yes
Contiguous: Yes
Permitted: Yes
Wet space: No
Addition: No
Conversion: No

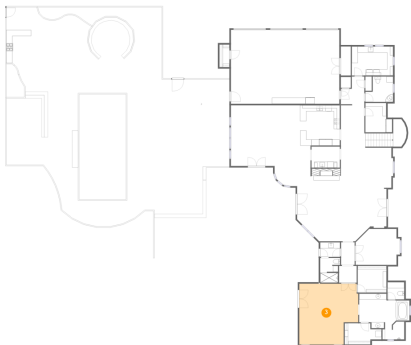
2 Floor 1 - Patio



Dimensions: 25'1" x 13'3"
Area: 333 sq. ft
Counted as living area: No

Heated: No
Finished: Yes
Enclosed: No
Contiguous: Yes
Permitted: Yes
Wet space: No
Addition: No
Conversion: No

3 Floor 1 - Primary Bedroom



Dimensions: 19'7" x 20'3"
Area: 359 sq. ft
Counted as living area: Yes

Heated: Yes
Finished: Yes
Enclosed: Yes
Contiguous: Yes
Permitted: Yes
Wet space: No
Addition: No
Conversion: No

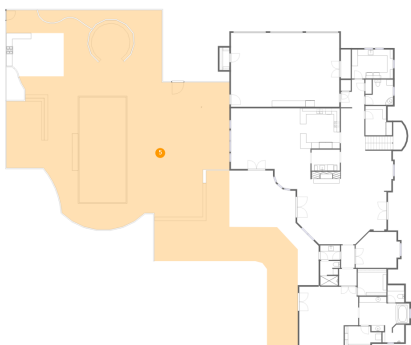
4 Floor 1 - Gym



Dimensions: 14'9" x 11'11"
Area: 159 sq. ft
Counted as living area: Yes

Heated: Yes
Finished: Yes
Enclosed: Yes
Contiguous: Yes
Permitted: Yes
Wet space: No
Addition: No
Conversion: No

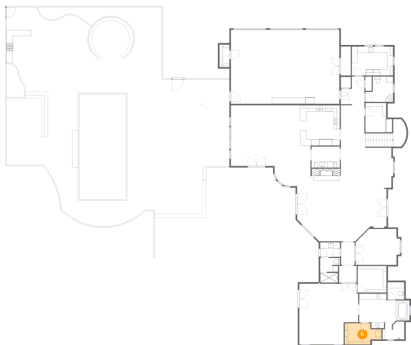
5 Floor 1 - Patio



Dimensions: 74'2" x 83'4"
Area: 4896 sq. ft
Counted as living area: No

Heated: No
Finished: Yes
Enclosed: No
Contiguous: Yes
Permitted: Yes
Wet space: No
Addition: No
Conversion: No

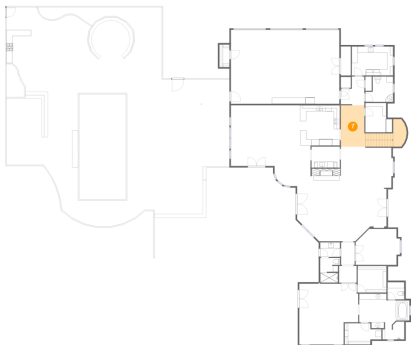
6 Floor 1 - W.I.C.



Dimensions: 12'3" x 7'1"
Area: 73 sq. ft
Counted as living area: Yes

Heated: Yes
Finished: Yes
Enclosed: Yes
Contiguous: Yes
Permitted: Yes
Wet space: No
Addition: No
Conversion: No

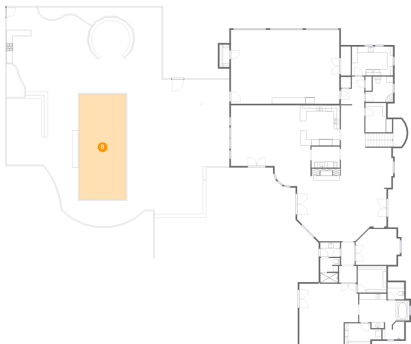
7 Floor 1 - Hall



Dimensions: 8'2" x 13'9"
Area: 186 sq. ft
Counted as living area: Yes

Heated: Yes
Finished: Yes
Enclosed: Yes
Contiguous: Yes
Permitted: Yes
Wet space: No
Addition: No
Conversion: No

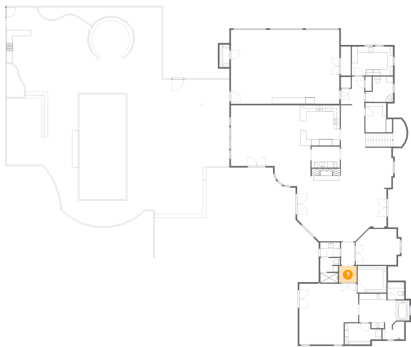
8 Floor 1 - Swimming Pool



Dimensions: 15'7" x 35'0"
Area: 546 sq. ft
Counted as living area: No

Heated: No
Finished: No
Enclosed: No
Contiguous: Yes
Permitted: No
Wet space: No
Addition: No
Conversion: No

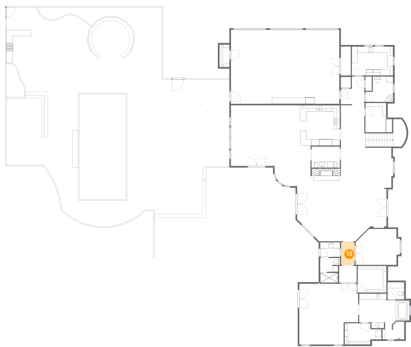
9 Floor 1 - Hall



Dimensions: 5'10" x 5'7"
Area: 33 sq. ft
Counted as living area: Yes

Heated: Yes
Finished: Yes
Enclosed: Yes
Contiguous: Yes
Permitted: Yes
Wet space: No
Addition: No
Conversion: No

10 Floor 1 - Hall



Dimensions: 4'6" x 7'6"
Area: 34 sq. ft
Counted as living area: Yes

Heated: Yes
Finished: Yes
Enclosed: Yes
Contiguous: Yes
Permitted: Yes
Wet space: No
Addition: No
Conversion: No

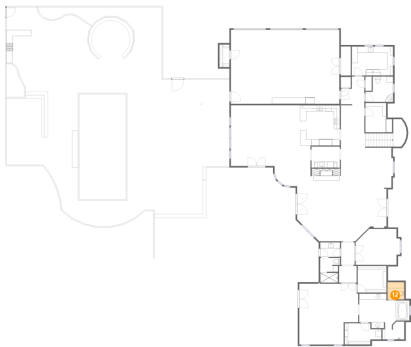
11 Floor 1 - W.I.C.



Dimensions: 9'7" x 8'11"
Area: 85 sq. ft
Counted as living area: Yes

Heated: Yes
Finished: Yes
Enclosed: Yes
Contiguous: Yes
Permitted: Yes
Wet space: No
Addition: No
Conversion: No

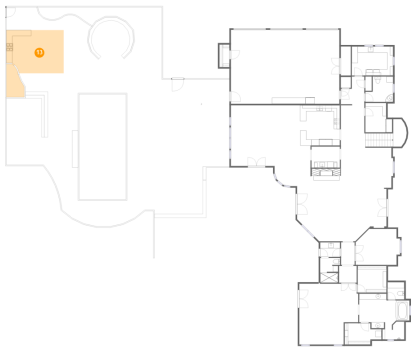
12 Floor 1 - WC



Dimensions: 5'7" x 5'9"
Area: 32 sq. ft
Counted as living area: Yes

Heated: Yes
Finished: Yes
Enclosed: Yes
Contiguous: Yes
Permitted: Yes
Wet space: No
Addition: No
Conversion: No

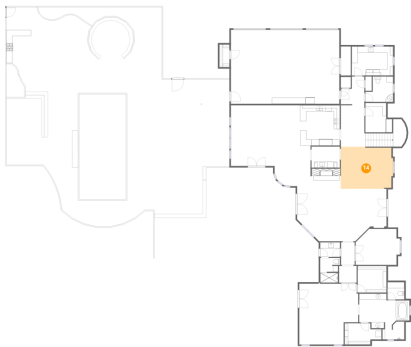
13 Floor 1 - Covered Patio



Dimensions: 19'1" x 14'5"
Area: 314 sq. ft
Counted as living area: No

Heated: No
Finished: Yes
Enclosed: No
Contiguous: Yes
Permitted: Yes
Wet space: No
Addition: No
Conversion: No

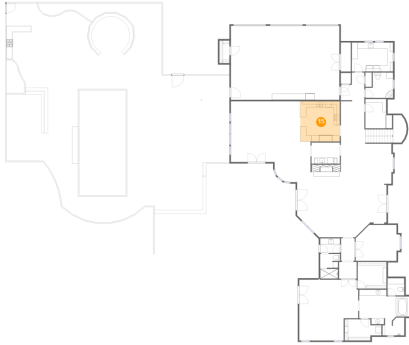
14 Floor 1 - Dining Area



Dimensions: 17'5" x 14'0"
Area: 235 sq. ft
Counted as living area: Yes

Heated: Yes
Finished: Yes
Enclosed: Yes
Contiguous: Yes
Permitted: Yes
Wet space: No
Addition: No
Conversion: No

15 Floor 1 - Kitchen



Dimensions: 13'1" x 13'4"
Area: 176 sq. ft
Counted as living area: Yes

Heated: Yes
Finished: Yes
Enclosed: Yes
Contiguous: Yes
Permitted: Yes
Wet space: No
Addition: No
Conversion: No

16 Floor 1 - Pantry



Dimensions: 6'11" x 5'4"
Area: 76 sq. ft
Counted as living area: Yes

Heated: Yes
Finished: Yes
Enclosed: Yes
Contiguous: Yes
Permitted: Yes
Wet space: No
Addition: No
Conversion: No

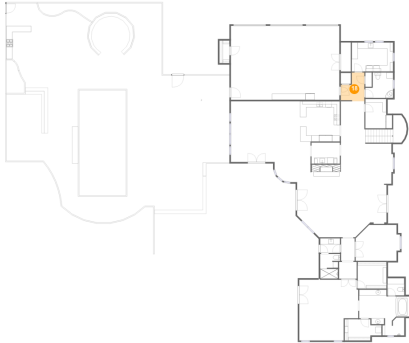
17 Floor 1 - WC



Dimensions: 9'3" x 8'5"
Area: 65 sq. ft
Counted as living area: Yes

Heated: Yes
Finished: Yes
Enclosed: Yes
Contiguous: Yes
Permitted: Yes
Wet space: Yes
Addition: No
Conversion: No

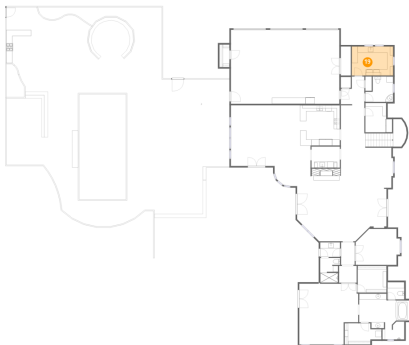
18 Floor 1 - Hall



Dimensions: 7'10" x 9'7"
Area: 59 sq. ft
Counted as living area: Yes

Heated: Yes
Finished: Yes
Enclosed: Yes
Contiguous: Yes
Permitted: Yes
Wet space: No
Addition: No
Conversion: No

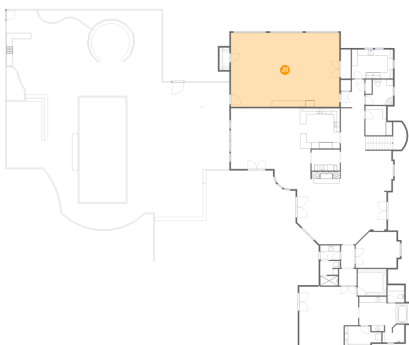
19 Floor 1 - Laundry



Dimensions: 13'9" x 9'7"
Area: 132 sq. ft
Counted as living area: Yes

Heated: Yes
Finished: Yes
Enclosed: Yes
Contiguous: Yes
Permitted: Yes
Wet space: No
Addition: No
Conversion: No

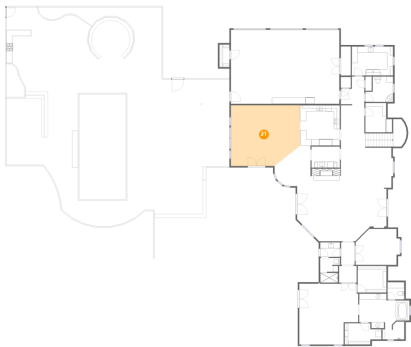
20 Floor 1 - Garage



Dimensions: 36'1" x 24'7"
Area: 886 sq. ft
Counted as living area: No

Heated: No
Finished: No
Enclosed: Yes
Contiguous: Yes
Permitted: Yes
Wet space: No
Addition: No
Conversion: No

21 Floor 1 - Family Room



Dimensions: 23'1" x 20'2"
Area: 437 sq. ft
Counted as living area: Yes

Heated: Yes
Finished: Yes
Enclosed: Yes
Contiguous: Yes
Permitted: Yes
Wet space: No
Addition: No
Conversion: No

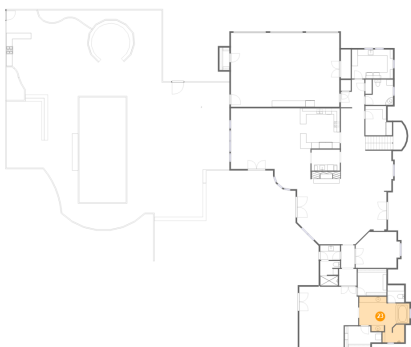
22 Floor 1 - Bath



Dimensions: 6'7" x 4'10"
Area: 32 sq. ft
Counted as living area: Yes

Heated: Yes
Finished: Yes
Enclosed: Yes
Contiguous: Yes
Permitted: Yes
Wet space: Yes
Addition: No
Conversion: No

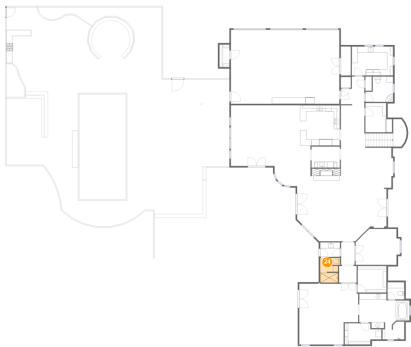
23 Floor 1 - Primary Bath



Dimensions: 16'9" x 15'2"
Area: 186 sq. ft
Counted as living area: Yes

Heated: Yes
Finished: Yes
Enclosed: Yes
Contiguous: Yes
Permitted: Yes
Wet space: Yes
Addition: No
Conversion: No

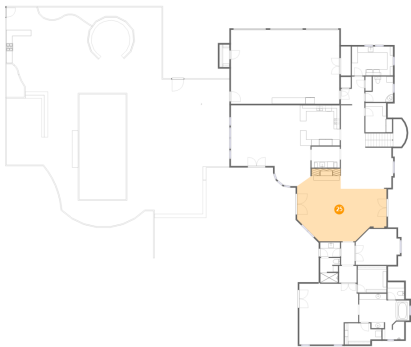
24 Floor 1 - Bath



Dimensions: 6'7" x 8'2"
Area: 48 sq. ft
Counted as living area: Yes

Heated: Yes
Finished: Yes
Enclosed: Yes
Contiguous: Yes
Permitted: Yes
Wet space: Yes
Addition: No
Conversion: No

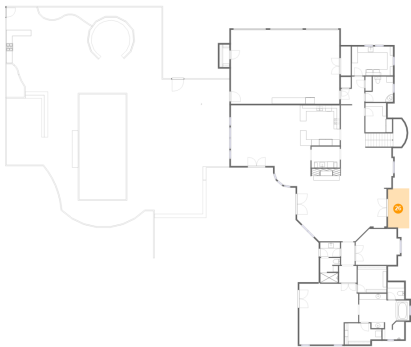
25 Floor 1 - Living Room



Dimensions: 29'8" x 21'8"
Area: 531 sq. ft
Counted as living area: Yes

Heated: Yes
Finished: Yes
Enclosed: Yes
Contiguous: Yes
Permitted: Yes
Wet space: No
Addition: No
Conversion: No

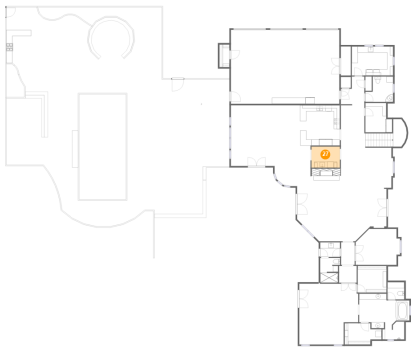
26 Floor 1 - Porch



Dimensions: 7'1" x 13'3"
Area: 92 sq. ft
Counted as living area: No

Heated: No
Finished: Yes
Enclosed: No
Contiguous: Yes
Permitted: Yes
Wet space: No
Addition: No
Conversion: No

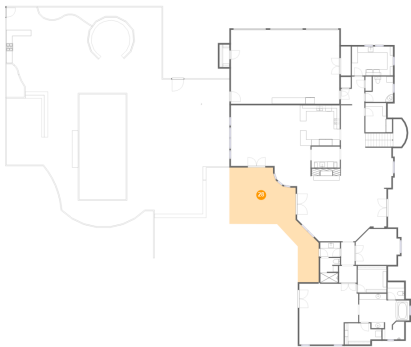
27 Floor 1 - Wet Bar



Dimensions: 9'5" x 7'0"
Area: 66 sq. ft
Counted as living area: Yes

Heated: Yes
Finished: Yes
Enclosed: Yes
Contiguous: Yes
Permitted: Yes
Wet space: No
Addition: No
Conversion: No

28 Floor 1 - Covered Patio



Dimensions: 22'0" x 18'9"
Area: 511 sq. ft
Counted as living area: No

Heated: No
Finished: Yes
Enclosed: No
Contiguous: Yes
Permitted: Yes
Wet space: No
Addition: No
Conversion: No

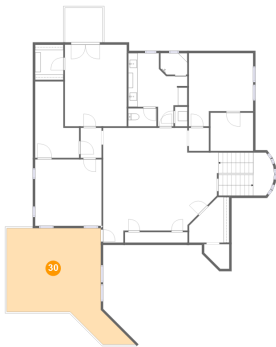
29 Floor 2 - W.I.C.



Dimensions: 8'6" x 9'8"
Area: 64 sq. ft
Counted as living area: Yes

Heated: Yes
Finished: Yes
Enclosed: Yes
Contiguous: Yes
Permitted: Yes
Wet space: No
Addition: No
Conversion: No

30 Floor 2 - Balcony



Dimensions: 20'0" x 17'9"
Area: 403 sq. ft
Counted as living area: No

Heated: No
Finished: Yes
Enclosed: No
Contiguous: Yes
Permitted: Yes
Wet space: No
Addition: No
Conversion: No

31 Floor 2 - Hall



Dimensions: 4'3" x 4'11"
Area: 21 sq. ft
Counted as living area: Yes

Heated: Yes
Finished: Yes
Enclosed: Yes
Contiguous: Yes
Permitted: Yes
Wet space: No
Addition: No
Conversion: No

32 Floor 2 - Balcony



Dimensions: 8'0" x 7'4"
Area: 59 sq. ft
Counted as living area: No

Heated: No
Finished: Yes
Enclosed: No
Contiguous: Yes
Permitted: Yes
Wet space: No
Addition: No
Conversion: No

33 Floor 2 - Hall



Dimensions: 4'5" x 6'5"
Area: 28 sq. ft
Counted as living area: Yes

Heated: Yes
Finished: Yes
Enclosed: Yes
Contiguous: Yes
Permitted: Yes
Wet space: No
Addition: No
Conversion: No

34 Floor 2 - Bath



Dimensions: 12'7" x 15'7"
Area: 153 sq. ft
Counted as living area: Yes

Heated: Yes
Finished: Yes
Enclosed: Yes
Contiguous: Yes
Permitted: Yes
Wet space: Yes
Addition: No
Conversion: No

35 Floor 2 - Bedroom



Dimensions: 13'2" x 17'4"
Area: 228 sq. ft
Counted as living area: Yes

Heated: Yes
Finished: Yes
Enclosed: Yes
Contiguous: Yes
Permitted: Yes
Wet space: No
Addition: No
Conversion: No

36 Floor 2 - Closet



Dimensions: 13'4" x 2'3"
Area: 30 sq. ft
Counted as living area: Yes

Heated: Yes
Finished: Yes
Enclosed: Yes
Contiguous: Yes
Permitted: Yes
Wet space: No
Addition: No
Conversion: No

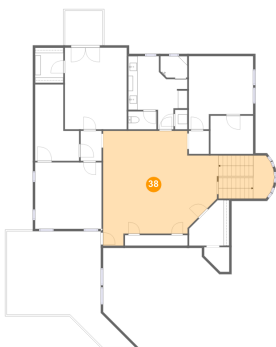
37 Floor 2 - WC



Dimensions: 6'0" x 3'10"
Area: 23 sq. ft
Counted as living area: Yes

Heated: Yes
Finished: Yes
Enclosed: Yes
Contiguous: Yes
Permitted: Yes
Wet space: Yes
Addition: No
Conversion: No

38 Floor 2 - Sitting Room



Dimensions: 24'7" x 24'5"
Area: 586 sq. ft
Counted as living area: Yes

Heated: Yes
Finished: Yes
Enclosed: Yes
Contiguous: Yes
Permitted: Yes
Wet space: No
Addition: No
Conversion: No

39 Floor 2 - Closet



Dimensions: 9'4" x 16'3"
Area: 119 sq. ft
Counted as living area: Yes

Heated: Yes
Finished: Yes
Enclosed: Yes
Contiguous: Yes
Permitted: Yes
Wet space: No
Addition: No
Conversion: No

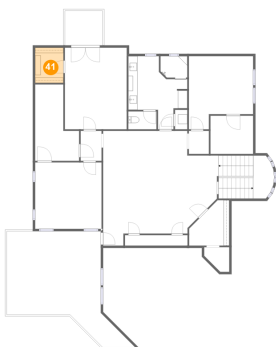
40 Floor 2 - Closet



Dimensions: 9'1" x 8'2"
Area: 74 sq. ft
Counted as living area: Yes

Heated: Yes
Finished: Yes
Enclosed: Yes
Contiguous: Yes
Permitted: Yes
Wet space: No
Addition: No
Conversion: No

41 Floor 2 - W.I.C.



Dimensions: 6'0" x 7'6"
Area: 45 sq. ft
Counted as living area: Yes

Heated: Yes
Finished: Yes
Enclosed: Yes
Contiguous: Yes
Permitted: Yes
Wet space: No
Addition: No
Conversion: No

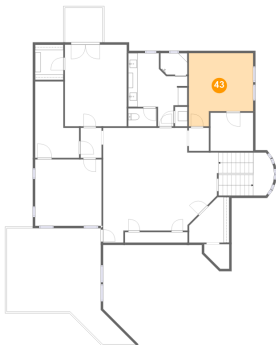
42 Floor 2 - Bedroom



Dimensions: 14'2" x 14'1"
Area: 200 sq. ft
Counted as living area: Yes

Heated: Yes
Finished: Yes
Enclosed: Yes
Contiguous: Yes
Permitted: Yes
Wet space: No
Addition: No
Conversion: No

43 Floor 2 - Bedroom



Dimensions: 13'8" x 15'6"
Area: 182 sq. ft
Counted as living area: Yes

Heated: Yes
Finished: Yes
Enclosed: Yes
Contiguous: Yes
Permitted: Yes
Wet space: No
Addition: No
Conversion: No