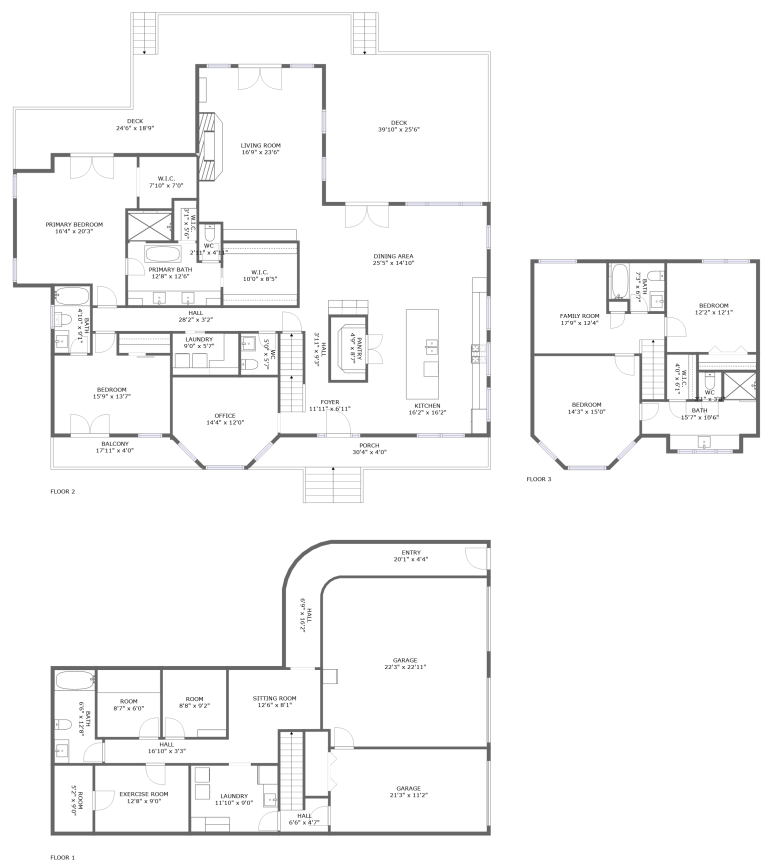





3051 Maple Lane, Alpharetta, Fulton County, Georgia,  
United States, 30009





Property summary


 **2** Garages


 **4** Bedrooms

 **5** Bathrooms

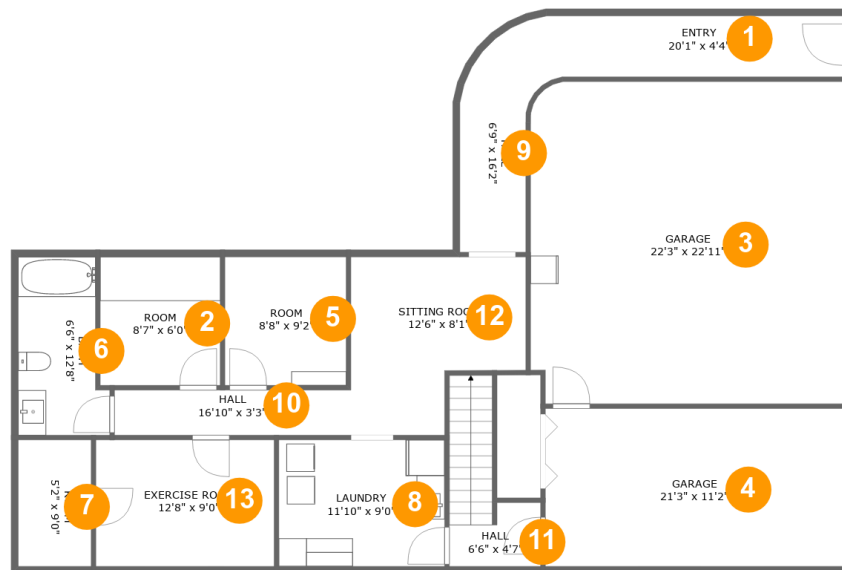
 **1** Half baths

 **3** Floors

 **4,318** Gross living area sqft

 **6,281** Total sqft

**3051 Maple Lane, Alpharetta, Fulton County, Georgia,  
United States, 30009**



## Room dimensions

Floor 1

Total sqft: 1853    Living area: 986

#		Dimensions	sqft	Counted as living area
1	Entry	20'1" x 4'4"	87 sq. ft	Yes
2	Room	8'7" x 6'0"	78 sq. ft	Yes
3	Garage	22'3" x 22'11"	508 sq. ft	No
4	Garage	21'3" x 11'2"	239 sq. ft	No
5	Room	8'8" x 9'2"	79 sq. ft	Yes
6	Bath	6'6" x 12'8"	73 sq. ft	Yes
7	Room	5'2" x 9'0"	47 sq. ft	No
8	Utility	11'10" x 9'0"	106 sq. ft	Yes
9	Hall	6'9" x 16'2"	82 sq. ft	Yes
10	Hall	16'10" x 3'3"	54 sq. ft	Yes
11	Hall	6'6" x 4'7"	57 sq. ft	Yes

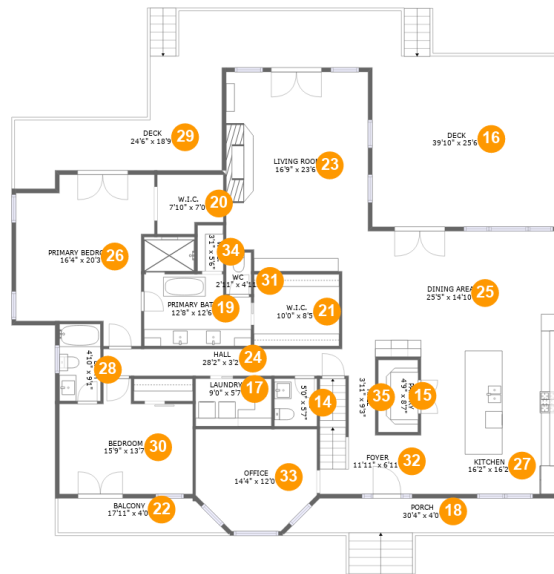
Scan captured on Wed, 08 Jan 2025 16:25:23 GMT

Information is calculated by Cubicasa technology deemed highly reliable but not guaranteed.

**3051 Maple Lane, Alpharetta, Fulton County, Georgia,  
United States, 30009**

#		Dimensions	sqft	Counted as living area
12	Living Room	12'6" x 8'1"	132 sq. ft	Yes
13	Exercise Room	12'8" x 9'0"	114 sq. ft	Yes

# 3051 Maple Lane, Alpharetta, Fulton County, Georgia, United States, 30009



## Room dimensions

Floor 2

Total sqft: 3603    Living area: 2507

#		Dimensions	sqft	Counted as living area
14	Bath	5'0" x 5'7"	28 sq. ft	Yes
15	Pantry	4'9" x 8'7"	41 sq. ft	Yes
16	Outdoor	39'10" x 25'6"	621 sq. ft	No
17	Utility	9'0" x 5'7"	50 sq. ft	Yes
18	Outdoor	30'4" x 4'0"	123 sq. ft	No
19	Bath	12'8" x 12'6"	123 sq. ft	Yes
20	Cl	7'10" x 7'0"	50 sq. ft	Yes
21	Cl	10'0" x 8'5"	85 sq. ft	Yes
22	Outdoor	17'11" x 4'0"	73 sq. ft	No
23	Living Room	16'9" x 23'6"	378 sq. ft	Yes
24	Hall	28'2" x 3'2"	89 sq. ft	Yes

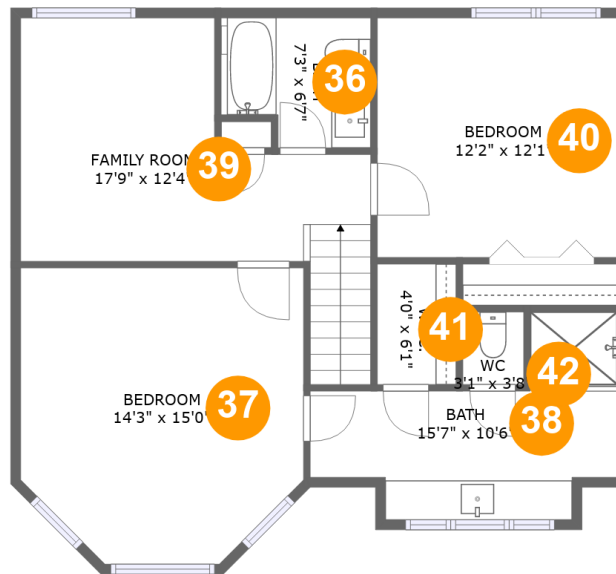
Scan captured on Wed, 08 Jan 2025 16:25:23 GMT

Information is calculated by Cubicasa technology deemed highly reliable but not guaranteed.

**3051 Maple Lane, Alpharetta, Fulton County, Georgia,  
United States, 30009**

#		Dimensions	sqft	Counted as living area
25	Dining Room	25'5" x 14'10"	371 sq. ft	Yes
26	Bedroom	16'4" x 20'3"	268 sq. ft	Yes
27	Kitchen	16'2" x 16'2"	261 sq. ft	Yes
28	Bath	4'10" x 9'1"	44 sq. ft	Yes
29	Outdoor	24'6" x 18'9"	280 sq. ft	No
30	Bedroom	15'9" x 13'7"	177 sq. ft	Yes
31	Bath	2'11" x 4'11"	15 sq. ft	Yes
32	Entry	11'11" x 6'11"	103 sq. ft	Yes
33	Office	14'4" x 12'0"	154 sq. ft	Yes
34	Cl	3'1" x 5'6"	17 sq. ft	Yes
35	Hall	3'11" x 9'3"	31 sq. ft	Yes

**3051 Maple Lane, Alpharetta, Fulton County, Georgia,  
United States, 30009**



## Room dimensions

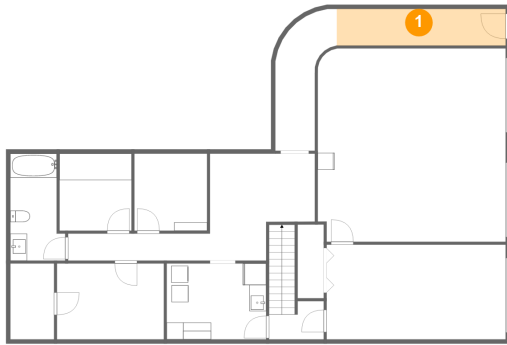
Floor 3

Total sqft: 825    Living area: 825

#		Dimensions	sqft	Counted as living area
36	Bath	7'3" x 6'7"	45 sq. ft	Yes
37	Bedroom	14'3" x 15'0"	196 sq. ft	Yes
38	Bath	15'7" x 10'6"	106 sq. ft	Yes
39	Living Room	17'9" x 12'4"	183 sq. ft	Yes
40	Bedroom	12'2" x 12'1"	147 sq. ft	Yes
41	Cl	4'0" x 6'1"	24 sq. ft	Yes
42	Bath	3'1" x 3'8"	11 sq. ft	Yes

**3051 Maple Lane, Alpharetta, Fulton County, Georgia,  
United States, 30009**

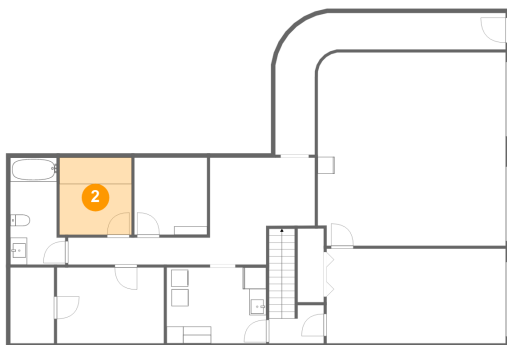
## **1 Floor 1 - Entry**



**Dimensions:** 20'1" x 4'4"  
**Area:** 87 sq. ft  
**Counted as living area:** Yes

**Heated:** Yes  
**Finished:** Yes  
**Enclosed:** Yes  
**Contiguous:** Yes  
**Permitted:** Yes  
**Wet space:** No  
**Addition:** No  
**Conversion:** No

## **2 Floor 1 - Room**

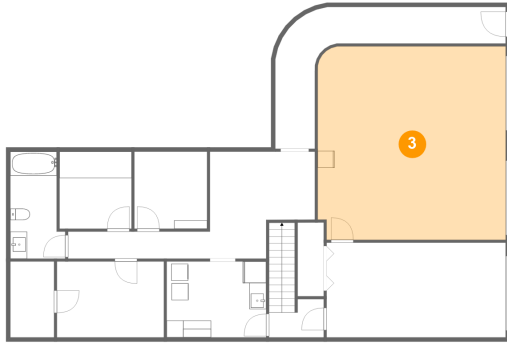


**Dimensions:** 8'7" x 6'0"  
**Area:** 78 sq. ft  
**Counted as living area:** Yes

**Heated:** Yes  
**Finished:** Yes  
**Enclosed:** Yes  
**Contiguous:** Yes  
**Permitted:** Yes  
**Wet space:** No  
**Addition:** No  
**Conversion:** No

**3051 Maple Lane, Alpharetta, Fulton County, Georgia,  
United States, 30009**

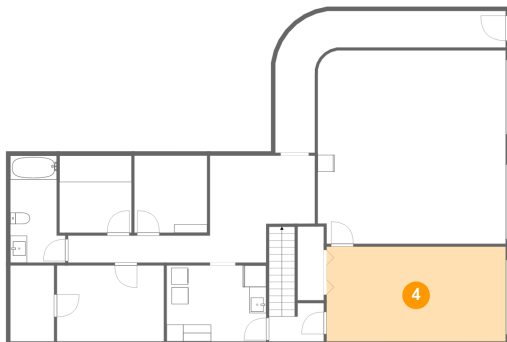
### 3 Floor 1 - Garage



Dimensions: 22'3" x 22'11"  
Area: 508 sq. ft  
Counted as living area: No

Heated: No  
Finished: No  
Enclosed: Yes  
Contiguous: Yes  
Permitted: Yes  
Wet space: No  
Addition: No  
Conversion: No

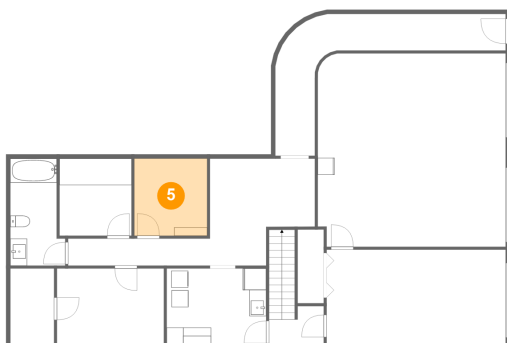
### 4 Floor 1 - Garage



Dimensions: 21'3" x 11'2"  
Area: 239 sq. ft  
Counted as living area: No

Heated: No  
Finished: No  
Enclosed: Yes  
Contiguous: Yes  
Permitted: Yes  
Wet space: No  
Addition: No  
Conversion: No

### 5 Floor 1 - Room



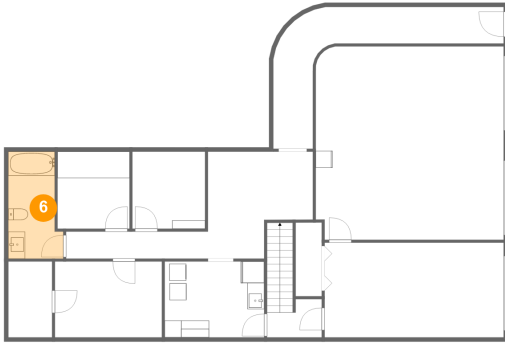
Dimensions: 8'8" x 9'2"  
Area: 79 sq. ft  
Counted as living area: Yes

Heated: Yes  
Finished: Yes  
Enclosed: Yes  
Contiguous: Yes  
Permitted: Yes  
Wet space: No  
Addition: No  
Conversion: No



3051 Maple Lane, Alpharetta, Fulton County, Georgia,  
United States, 30009

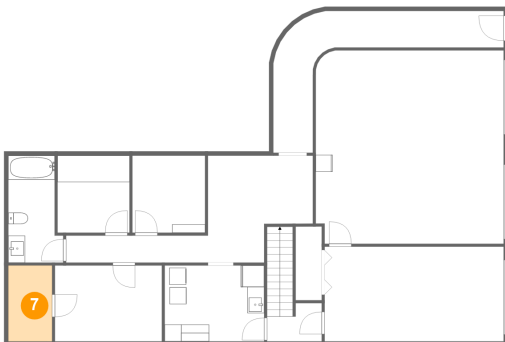
## 6 Floor 1 - Bath



Dimensions: 6'6" x 12'8"  
Area: 73 sq. ft  
Counted as living area: Yes

Heated: Yes  
Finished: Yes  
Enclosed: Yes  
Contiguous: Yes  
Permitted: Yes  
Wet space: Yes  
Addition: No  
Conversion: No

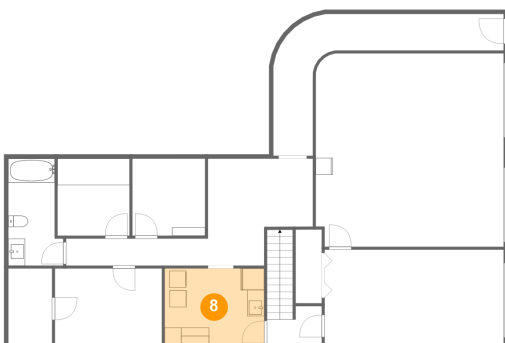
## 7 Floor 1 - Room



Dimensions: 5'2" x 9'0"  
Area: 47 sq. ft  
Counted as living area: No

Heated: Yes  
Finished: No  
Enclosed: Yes  
Contiguous: Yes  
Permitted: Yes  
Wet space: No  
Addition: No  
Conversion: No

## 8 Floor 1 - Utility

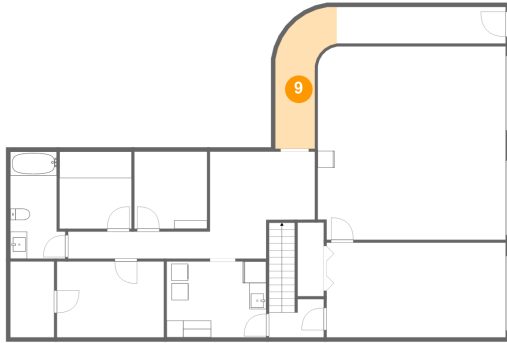


Dimensions: 11'10" x 9'0"  
Area: 106 sq. ft  
Counted as living area: Yes

Heated: Yes  
Finished: Yes  
Enclosed: Yes  
Contiguous: Yes  
Permitted: Yes  
Wet space: No  
Addition: No  
Conversion: No

3051 Maple Lane, Alpharetta, Fulton County, Georgia,  
United States, 30009

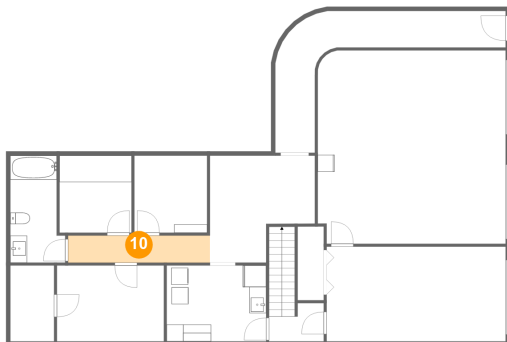
### 9 Floor 1 - Hall



Dimensions: 6'9" x 16'2"  
Area: 82 sq. ft  
Counted as living area: Yes

Heated: Yes  
Finished: Yes  
Enclosed: Yes  
Contiguous: Yes  
Permitted: Yes  
Wet space: No  
Addition: No  
Conversion: No

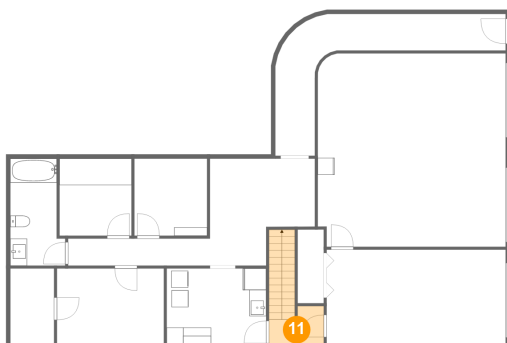
### 10 Floor 1 - Hall



Dimensions: 16'10" x 3'3"  
Area: 54 sq. ft  
Counted as living area: Yes

Heated: Yes  
Finished: Yes  
Enclosed: Yes  
Contiguous: Yes  
Permitted: Yes  
Wet space: No  
Addition: No  
Conversion: No

### 11 Floor 1 - Hall

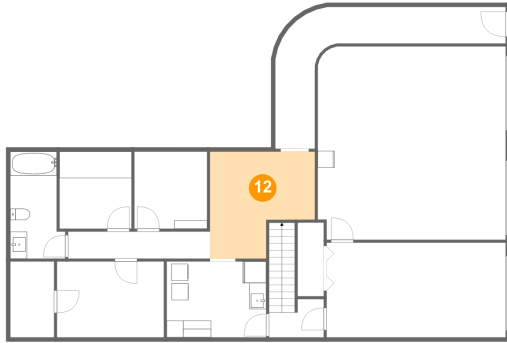


Dimensions: 6'6" x 4'7"  
Area: 57 sq. ft  
Counted as living area: Yes

Heated: Yes  
Finished: Yes  
Enclosed: Yes  
Contiguous: Yes  
Permitted: Yes  
Wet space: No  
Addition: No  
Conversion: No

**3051 Maple Lane, Alpharetta, Fulton County, Georgia,  
United States, 30009**

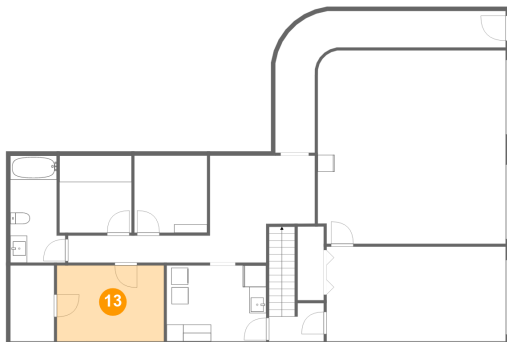
## **12** Floor 1 - Living Room



Dimensions: 12'6" x 8'1"  
Area: 132 sq. ft  
Counted as living area: Yes

Heated: Yes  
Finished: Yes  
Enclosed: Yes  
Contiguous: Yes  
Permitted: Yes  
Wet space: No  
Addition: No  
Conversion: No

## **13** Floor 1 - Exercise Room



Dimensions: 12'8" x 9'0"  
Area: 114 sq. ft  
Counted as living area: Yes

Heated: Yes  
Finished: Yes  
Enclosed: Yes  
Contiguous: Yes  
Permitted: Yes  
Wet space: No  
Addition: No  
Conversion: No

## **14** Floor 2 - Bath



Dimensions: 5'0" x 5'7"  
Area: 28 sq. ft  
Counted as living area: Yes

Heated: Yes  
Finished: Yes  
Enclosed: Yes  
Contiguous: Yes  
Permitted: Yes  
Wet space: Yes  
Addition: No  
Conversion: No

3051 Maple Lane, Alpharetta, Fulton County, Georgia,  
United States, 30009

### 15 Floor 2 - Pantry



Dimensions: 4'9" x 8'7"  
Area: 41 sq. ft  
Counted as living area: Yes

Heated: Yes  
Finished: Yes  
Enclosed: Yes  
Contiguous: Yes  
Permitted: Yes  
Wet space: No  
Addition: No  
Conversion: No

### 16 Floor 2 - Outdoor



Dimensions: 39'10" x 25'6"  
Area: 621 sq. ft  
Counted as living area: No

Heated: No  
Finished: Yes  
Enclosed: No  
Contiguous: Yes  
Permitted: Yes  
Wet space: No  
Addition: No  
Conversion: No

### 17 Floor 2 - Utility



Dimensions: 9'0" x 5'7"  
Area: 50 sq. ft  
Counted as living area: Yes

Heated: Yes  
Finished: Yes  
Enclosed: Yes  
Contiguous: Yes  
Permitted: Yes  
Wet space: No  
Addition: No  
Conversion: No

**3051 Maple Lane, Alpharetta, Fulton County, Georgia,  
United States, 30009**

## **18** Floor 2 - Outdoor



**Dimensions:** 30'4" x 4'0"  
**Area:** 123 sq. ft  
**Counted as living area:** No

**Heated:** No  
**Finished:** Yes  
**Enclosed:** No  
**Contiguous:** Yes  
**Permitted:** Yes  
**Wet space:** No  
**Addition:** No  
**Conversion:** No

## **19** Floor 2 - Bath



**Dimensions:** 12'8" x 12'6"  
**Area:** 123 sq. ft  
**Counted as living area:** Yes

**Heated:** Yes  
**Finished:** Yes  
**Enclosed:** Yes  
**Contiguous:** Yes  
**Permitted:** Yes  
**Wet space:** Yes  
**Addition:** No  
**Conversion:** No

## **20** Floor 2 - Cl



**Dimensions:** 7'10" x 7'0"  
**Area:** 50 sq. ft  
**Counted as living area:** Yes

**Heated:** Yes  
**Finished:** Yes  
**Enclosed:** Yes  
**Contiguous:** Yes  
**Permitted:** Yes  
**Wet space:** No  
**Addition:** No  
**Conversion:** No

**3051 Maple Lane, Alpharetta, Fulton County, Georgia,  
United States, 30009**

## **21** Floor 2 - Cl



**Dimensions:** 10'0" x 8'5"  
**Area:** 85 sq. ft  
**Counted as living area:** Yes

**Heated:** Yes  
**Finished:** Yes  
**Enclosed:** Yes  
**Contiguous:** Yes  
**Permitted:** Yes  
**Wet space:** No  
**Addition:** No  
**Conversion:** No

## **22** Floor 2 - Outdoor



**Dimensions:** 17'11" x 4'0"  
**Area:** 73 sq. ft  
**Counted as living area:** No

**Heated:** No  
**Finished:** Yes  
**Enclosed:** No  
**Contiguous:** Yes  
**Permitted:** Yes  
**Wet space:** No  
**Addition:** No  
**Conversion:** No

## **23** Floor 2 - Living Room



**Dimensions:** 16'9" x 23'6"  
**Area:** 378 sq. ft  
**Counted as living area:** Yes

**Heated:** Yes  
**Finished:** Yes  
**Enclosed:** Yes  
**Contiguous:** Yes  
**Permitted:** Yes  
**Wet space:** No  
**Addition:** No  
**Conversion:** No

3051 Maple Lane, Alpharetta, Fulton County, Georgia,  
United States, 30009

## 24 Floor 2 - Hall



Dimensions: 28'2" x 3'2"  
Area: 89 sq. ft  
Counted as living area: Yes

Heated: Yes  
Finished: Yes  
Enclosed: Yes  
Contiguous: Yes  
Permitted: Yes  
Wet space: No  
Addition: No  
Conversion: No

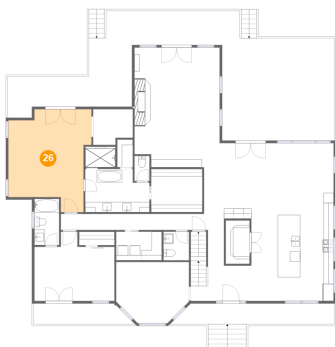
## 25 Floor 2 - Dining Room



Dimensions: 25'5" x 14'10"  
Area: 371 sq. ft  
Counted as living area: Yes

Heated: Yes  
Finished: Yes  
Enclosed: Yes  
Contiguous: Yes  
Permitted: Yes  
Wet space: No  
Addition: No  
Conversion: No

## 26 Floor 2 - Bedroom



Dimensions: 16'4" x 20'3"  
Area: 268 sq. ft  
Counted as living area: Yes

Heated: Yes  
Finished: Yes  
Enclosed: Yes  
Contiguous: Yes  
Permitted: Yes  
Wet space: No  
Addition: No  
Conversion: No

**3051 Maple Lane, Alpharetta, Fulton County, Georgia,  
United States, 30009**

## **27** Floor 2 - Kitchen



**Dimensions:** 16'2" x 16'2"  
**Area:** 261 sq. ft  
**Counted as living area:** Yes

**Heated:** Yes  
**Finished:** Yes  
**Enclosed:** Yes  
**Contiguous:** Yes  
**Permitted:** Yes  
**Wet space:** No  
**Addition:** No  
**Conversion:** No

## **28** Floor 2 - Bath



**Dimensions:** 4'10" x 9'1"  
**Area:** 44 sq. ft  
**Counted as living area:** Yes

**Heated:** Yes  
**Finished:** Yes  
**Enclosed:** Yes  
**Contiguous:** Yes  
**Permitted:** Yes  
**Wet space:** Yes  
**Addition:** No  
**Conversion:** No

## **29** Floor 2 - Outdoor



**Dimensions:** 24'6" x 18'9"  
**Area:** 280 sq. ft  
**Counted as living area:** No

**Heated:** No  
**Finished:** Yes  
**Enclosed:** No  
**Contiguous:** Yes  
**Permitted:** Yes  
**Wet space:** No  
**Addition:** No  
**Conversion:** No



**3051 Maple Lane, Alpharetta, Fulton County, Georgia,  
United States, 30009**

### **30** Floor 2 - Bedroom



**Dimensions:** 15'9" x 13'7"  
**Area:** 177 sq. ft  
**Counted as living area:** Yes

**Heated:** Yes  
**Finished:** Yes  
**Enclosed:** Yes  
**Contiguous:** Yes  
**Permitted:** Yes  
**Wet space:** No  
**Addition:** No  
**Conversion:** No

### **31** Floor 2 - Bath



**Dimensions:** 2'11" x 4'11"  
**Area:** 15 sq. ft  
**Counted as living area:** Yes

**Heated:** Yes  
**Finished:** Yes  
**Enclosed:** Yes  
**Contiguous:** Yes  
**Permitted:** Yes  
**Wet space:** Yes  
**Addition:** No  
**Conversion:** No

### **32** Floor 2 - Entry



**Dimensions:** 11'11" x 6'11"  
**Area:** 103 sq. ft  
**Counted as living area:** Yes

**Heated:** Yes  
**Finished:** Yes  
**Enclosed:** Yes  
**Contiguous:** Yes  
**Permitted:** Yes  
**Wet space:** No  
**Addition:** No  
**Conversion:** No

3051 Maple Lane, Alpharetta, Fulton County, Georgia,  
United States, 30009

### 33 Floor 2 - Office



Dimensions: 14'4" x 12'0"  
Area: 154 sq. ft  
Counted as living area: Yes

Heated: Yes  
Finished: Yes  
Enclosed: Yes  
Contiguous: Yes  
Permitted: Yes  
Wet space: No  
Addition: No  
Conversion: No

### 34 Floor 2 - Cl



Dimensions: 3'1" x 5'6"  
Area: 17 sq. ft  
Counted as living area: Yes

Heated: Yes  
Finished: Yes  
Enclosed: Yes  
Contiguous: Yes  
Permitted: Yes  
Wet space: No  
Addition: No  
Conversion: No

### 35 Floor 2 - Hall

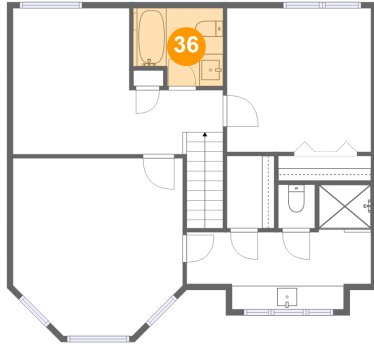


Dimensions: 3'11" x 9'3"  
Area: 31 sq. ft  
Counted as living area: Yes

Heated: Yes  
Finished: Yes  
Enclosed: Yes  
Contiguous: Yes  
Permitted: Yes  
Wet space: No  
Addition: No  
Conversion: No

3051 Maple Lane, Alpharetta, Fulton County, Georgia,  
United States, 30009

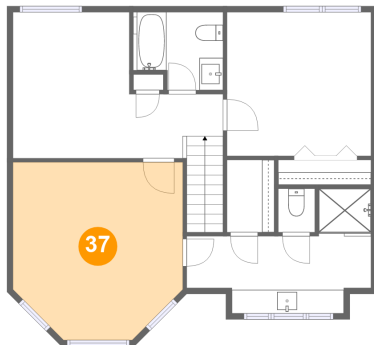
### 36 Floor 3 - Bath



Dimensions: 7'3" x 6'7"  
Area: 45 sq. ft  
Counted as living area: Yes

Heated: Yes  
Finished: Yes  
Enclosed: Yes  
Contiguous: Yes  
Permitted: Yes  
Wet space: Yes  
Addition: No  
Conversion: No

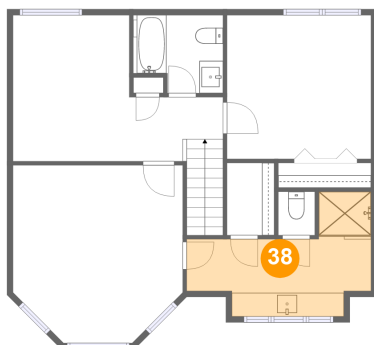
### 37 Floor 3 - Bedroom



Dimensions: 14'3" x 15'0"  
Area: 196 sq. ft  
Counted as living area: Yes

Heated: Yes  
Finished: Yes  
Enclosed: Yes  
Contiguous: Yes  
Permitted: Yes  
Wet space: No  
Addition: No  
Conversion: No

### 38 Floor 3 - Bath

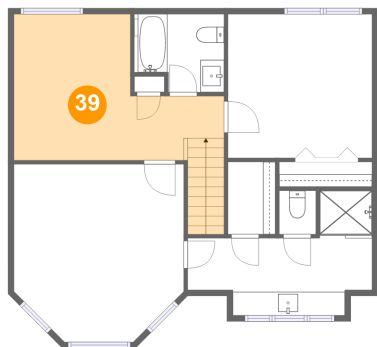


Dimensions: 15'7" x 10'6"  
Area: 106 sq. ft  
Counted as living area: Yes

Heated: Yes  
Finished: Yes  
Enclosed: Yes  
Contiguous: Yes  
Permitted: Yes  
Wet space: Yes  
Addition: No  
Conversion: No

3051 Maple Lane, Alpharetta, Fulton County, Georgia,  
United States, 30009

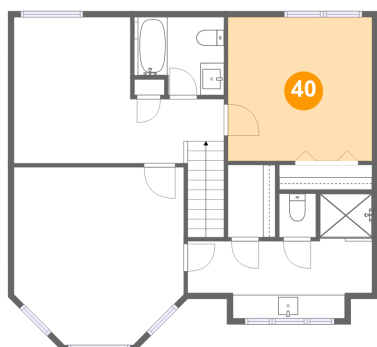
### 39 Floor 3 - Living Room



Dimensions: 17'9" x 12'4"  
Area: 183 sq. ft  
Counted as living area: Yes

Heated: Yes  
Finished: Yes  
Enclosed: Yes  
Contiguous: Yes  
Permitted: Yes  
Wet space: No  
Addition: No  
Conversion: No

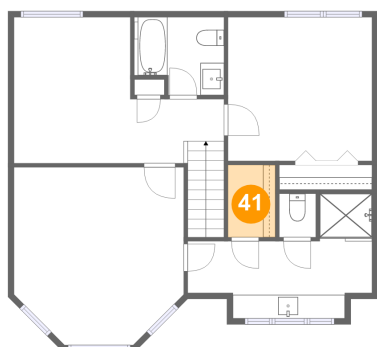
### 40 Floor 3 - Bedroom



Dimensions: 12'2" x 12'1"  
Area: 147 sq. ft  
Counted as living area: Yes

Heated: Yes  
Finished: Yes  
Enclosed: Yes  
Contiguous: Yes  
Permitted: Yes  
Wet space: No  
Addition: No  
Conversion: No

### 41 Floor 3 - Cl

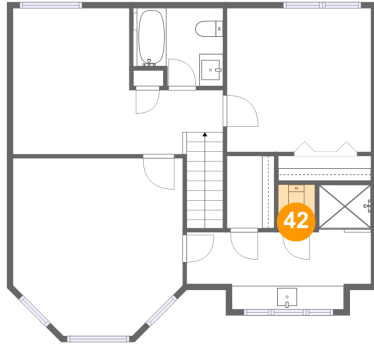


Dimensions: 4'0" x 6'1"  
Area: 24 sq. ft  
Counted as living area: Yes

Heated: Yes  
Finished: Yes  
Enclosed: Yes  
Contiguous: Yes  
Permitted: Yes  
Wet space: No  
Addition: No  
Conversion: No

**3051 Maple Lane, Alpharetta, Fulton County, Georgia,  
United States, 30009**

**42 Floor 3 - Bath**



**Dimensions:** 3'1" x 3'8"  
**Area:** 11 sq. ft  
**Counted as living area:** Yes

**Heated:** Yes  
**Finished:** Yes  
**Enclosed:** Yes  
**Contiguous:** Yes  
**Permitted:** Yes  
**Wet space:** Yes  
**Addition:** No  
**Conversion:** No