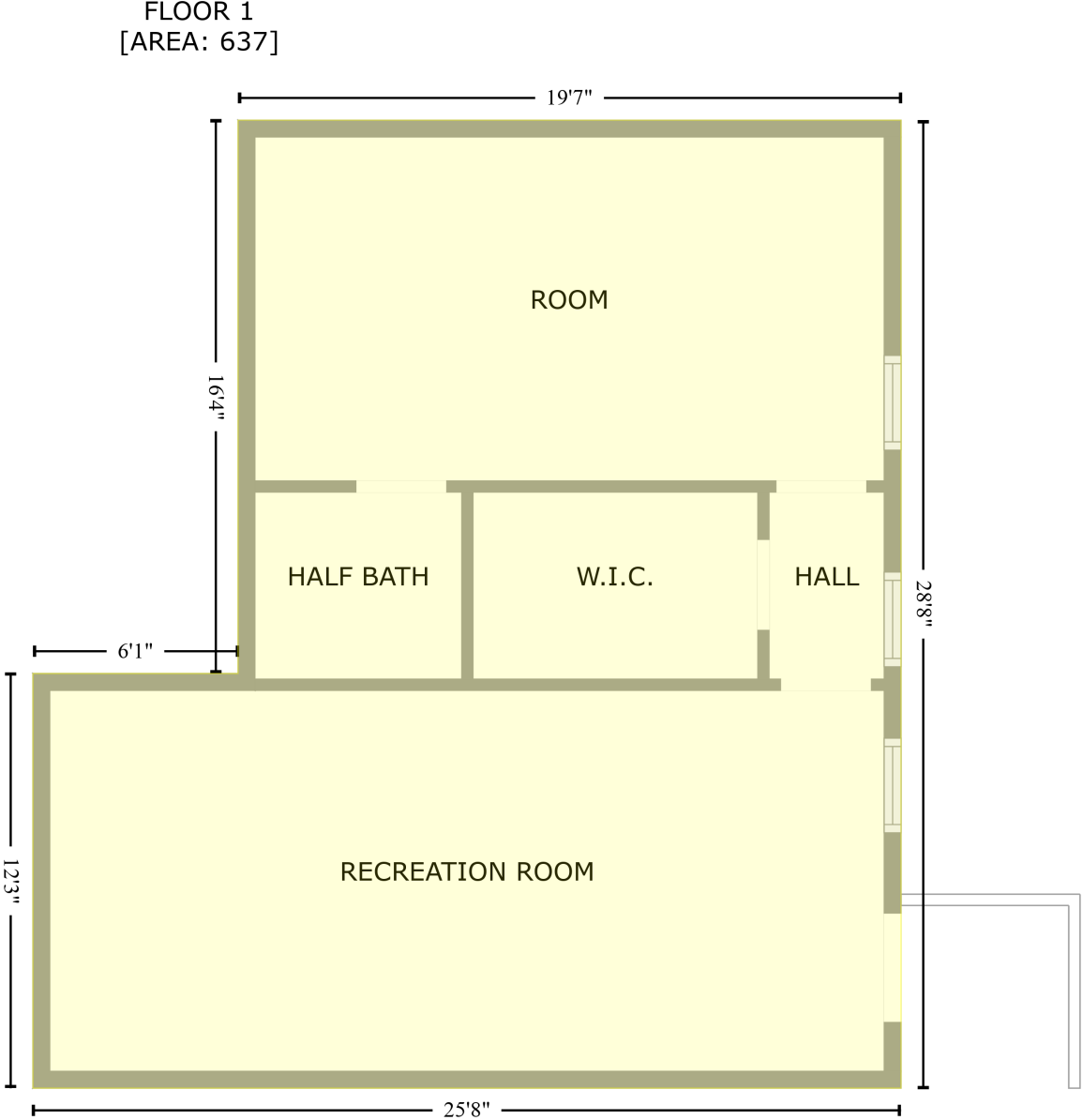


5332 Norris Mill Road, Hartselle, Morgan County, Alabama, United States, 35640

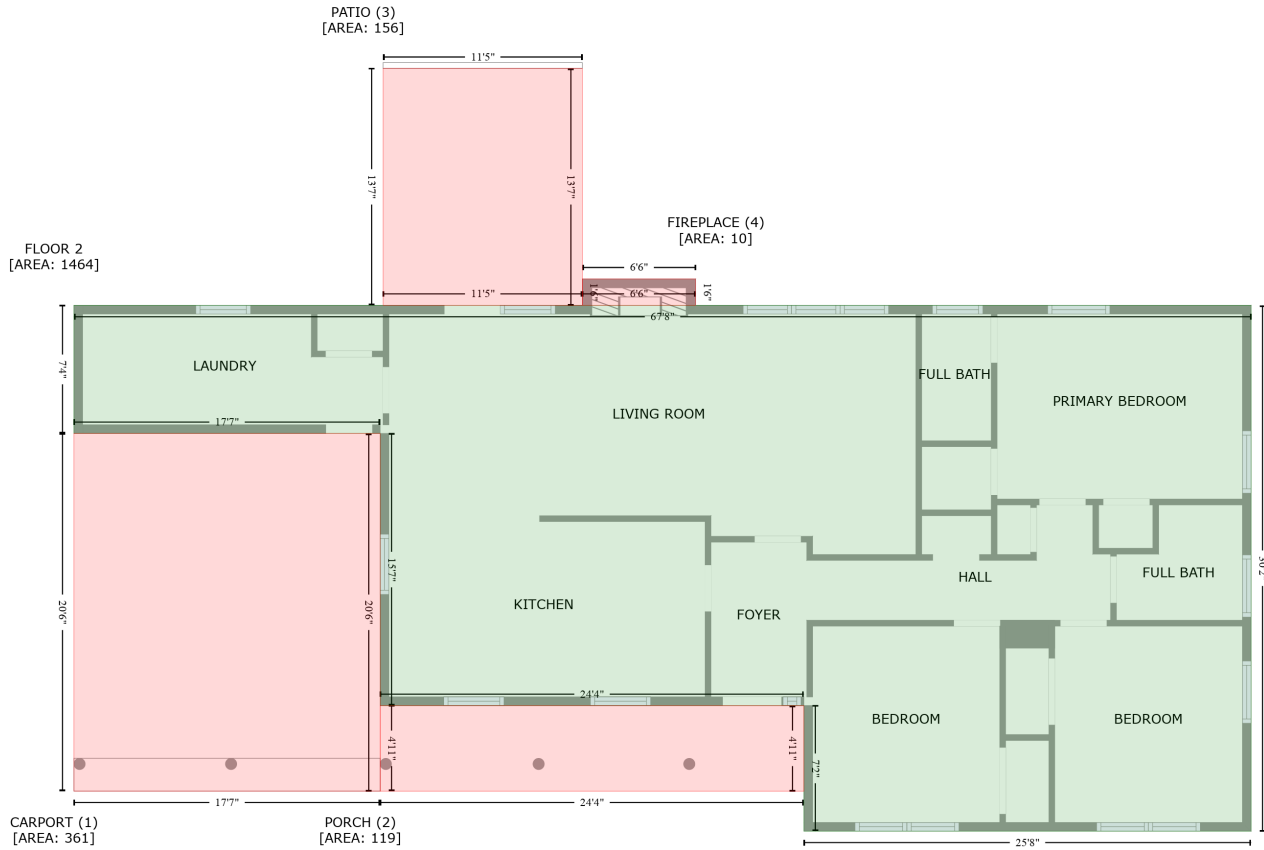
Gross Living Area: 1464 sq. ft



Space	Area (sq. ft)	Calculation <small>Coordinate Polygon Area Algorithm using inches</small>
FLOOR 1 (Living area)	637	$-((820.2 + 820.2) * (484.7 - 828.4) + (820.2 + 511.8) * (828.4 - 828.4) + (511.8 + 511.8) * (828.4 - 681.2) + (511.8 + 584.7) * (681.2 - 681.2) + (584.7 + 584.7) * (681.2 - 484.7) + (584.7 + 820.2) * (484.7 - 484.7)) * 0.5 + 0.00694$

5332 Norris Mill Road, Hartselle, Morgan County, Alabama, United States, 35640

Gross Living Area: 1464 sq. ft



Space	Area (sq. ft)	Calculation <small>Coordinate Polygon Area Algorithm using inches</small>
FLOOR 2 (Living area)	1464	$-\left((820.2 + 820.2) * (466.2 - 828.4) + (820.2 + 511.8) * (828.4 - 828.4) + (511.8 + 511.8) * (828.4 - 741.9) + (511.8 + 219.7) * (741.9 - 741.9) + (219.7 + 219.7) * (741.9 - 554.5) + (219.7 + 8.6) * (554.5 - 554.5) + (8.6 + 8.6) * (554.5 - 466.2) + (8.6 + 820.2) * (466.2 - 466.2)\right) * 0.5 * 0.00694$
CARPOR (1) (Non-living area)	361	$-\left((219.7 + 219.7) * (554.5 - 800.8) + (219.7 + 8.6) * (800.8 - 800.8) + (8.6 + 8.6) * (800.8 - 554.5) + (8.6 + 219.7) * (554.5 - 554.5)\right) * 0.5 * 0.00694$
PORCH (Non-living area)	119	$-\left((511.8 + 511.8) * (741.9 - 800.8) + (511.8 + 219.7) * (800.8 - 800.8) + (219.7 + 219.7) * (800.8 - 741.9) + (219.7 + 511.8) * (741.9 - 741.9)\right) * 0.5 * 0.00694$
PATIO (Non-living area)	156	$-\left((359.1 + 359.1) * (303.1 - 466.2) + (359.1 + 221.7) * (466.2 - 466.2) + (221.7 + 221.7) * (466.2 - 303.1) + (221.7 + 359.1) * (303.1 - 303.1)\right) * 0.5 * 0.00694$
FIREPLACE (Non-living area)	10	$-\left((437.2 + 437.2) * (448.1 - 466.2) + (437.2 + 359.1) * (466.2 - 466.2) + (359.1 + 359.1) * (466.2 - 448.1) + (359.1 + 437.2) * (448.1 - 448.1)\right) * 0.5 * 0.00694$