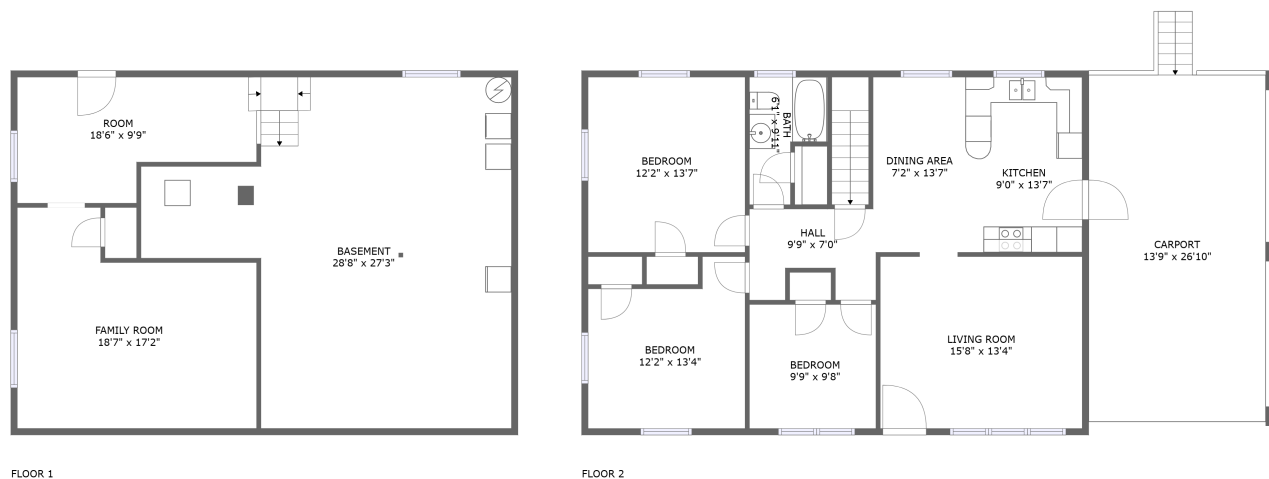


Home report

15 Whitten Street,Rocky Mount,Virginia,United States



**Total Area: 1489 sq. ft**  
Below Ground: 446 sq. ft, Floor 2: 1043 sq. ft  
Excluded: Basement 596 sq. ft, Carport 381 sq. ft, Walls: 133 sq. ft

Property summary

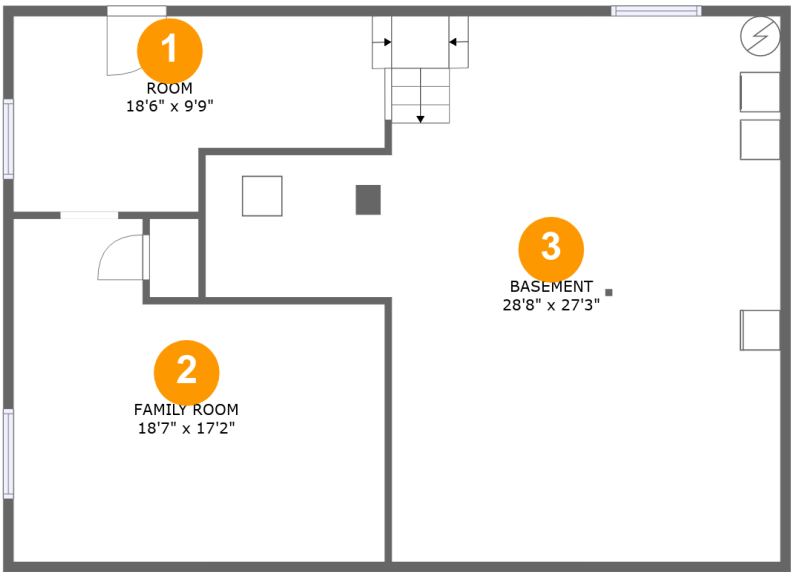
 **2** Floors

 **3** Bedrooms

 **1** Bathrooms

Home report

15 Whitten Street,Rocky Mount,Virginia,United States



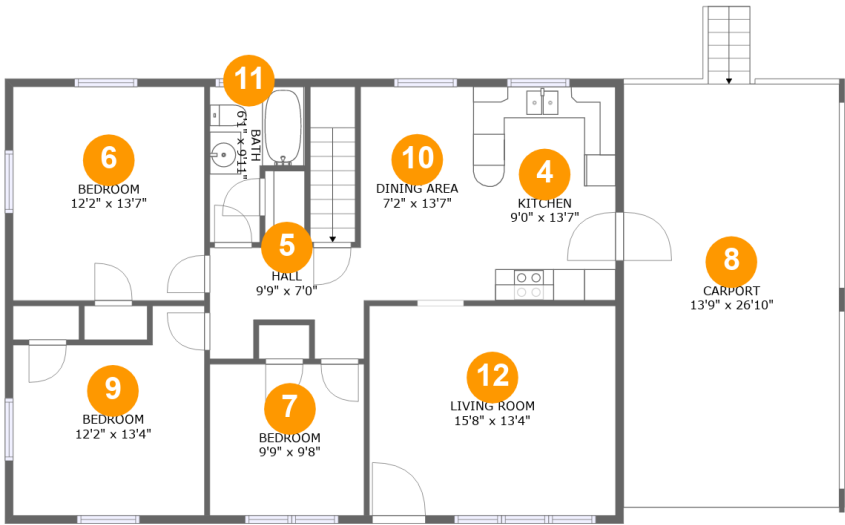
Room dimensions

Floor 1 Below ground Total:446sqft Excluded: 596sqft

#		Max Dimensions	sqft	Included
1	Room	18'6" x 9'9"	151 sq. ft	Yes
2	Family Room	18'7" x 17'2"	266 sq. ft	Yes
3	Basement	28'8" x 27'3"	596 sq. ft	No

Home report

15 Whitten Street,Rocky Mount,Virginia,United States

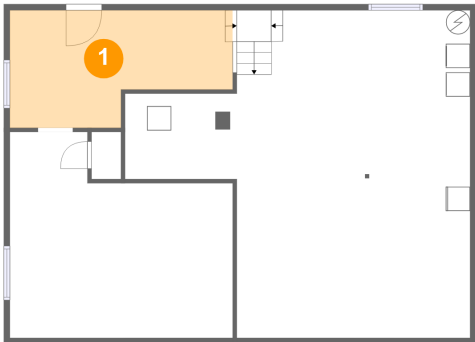


Room dimensions

Floor 2 Total:1043sqft    Excluded: 381sqft

#		Max Dimensions	sqft	Included
4	Kitchen	9'0" x 13'7"	123 sq. ft	Yes
5	Hall	9'9" x 7'0"	59 sq. ft	Yes
6	Bedroom	12'2" x 13'7"	165 sq. ft	Yes
7	Bedroom	9'9" x 9'8"	94 sq. ft	Yes
8	Carport	13'9" x 26'10"	381 sq. ft	No
9	Bedroom	12'2" x 13'4"	140 sq. ft	Yes
10	Dining Area	7'2" x 13'7"	97 sq. ft	Yes
11	Bath	6'1" x 9'11"	46 sq. ft	Yes
12	Living Room	15'8" x 13'4"	208 sq. ft	Yes

1 Floor 1 - Room



Max Dimensions: 18'6" x 9'9"

Calculated Area: 151 sq. ft

Included: Yes

Heated: Yes

Finished: Yes

Enclosed: Yes

Contiguous: Yes

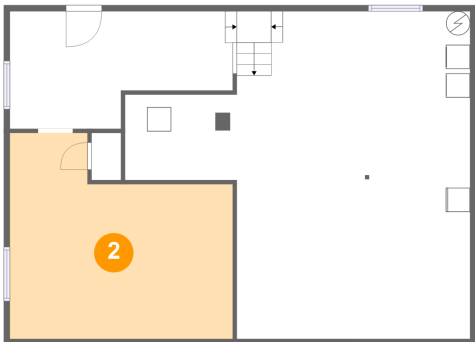
Permitted: Yes

Wet space: No

Addition: No

Conversion: No

2 Floor 1 - Family Room



Max Dimensions: 18'7" x 17'2"

Calculated Area: 266 sq. ft

Included: Yes

Heated: Yes

Finished: Yes

Enclosed: Yes

Contiguous: Yes

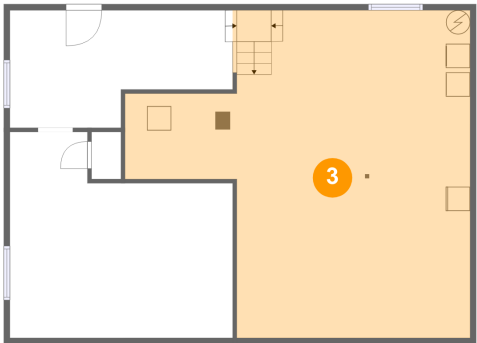
Permitted: Yes

Wet space: No

Addition: No

Conversion: No

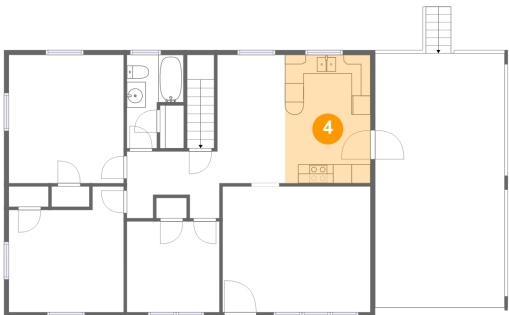
3 Floor 1 - Basement



Max Dimensions: 28'8" x 27'3"  
Calculated Area: 596 sq. ft  
Included: No

Heated: Yes  
Finished: No  
Enclosed: Yes  
Contiguous: Yes  
Permitted: Yes  
Wet space: No  
Addition: No  
Conversion: No

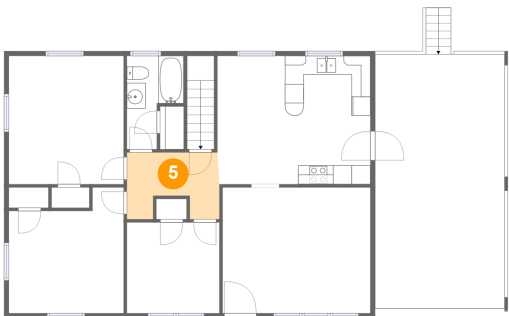
4 Floor 2 - Kitchen



Max Dimensions: 9'0" x 13'7"  
Calculated Area: 123 sq. ft  
Included: Yes

Heated: Yes  
Finished: Yes  
Enclosed: Yes  
Contiguous: Yes  
Permitted: Yes  
Wet space: No  
Addition: No  
Conversion: No

5 Floor 2 - Hall



Max Dimensions: 9'9" x 7'0"  
Calculated Area: 59 sq. ft  
Included: Yes

Heated: Yes  
Finished: Yes  
Enclosed: Yes  
Contiguous: Yes  
Permitted: Yes  
Wet space: No  
Addition: No  
Conversion: No

6 Floor 2 - Bedroom



Max Dimensions: 12'2" x 13'7"  
Calculated Area: 165 sq. ft  
Included: Yes

Heated: Yes  
Finished: Yes  
Enclosed: Yes  
Contiguous: Yes  
Permitted: Yes  
Wet space: No  
Addition: No  
Conversion: No

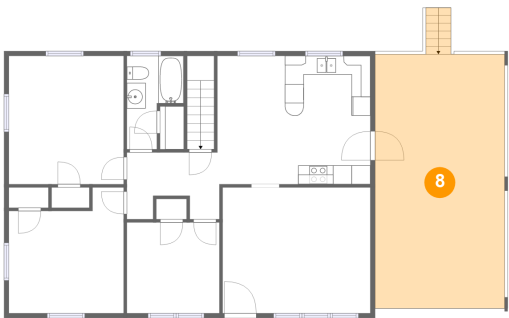
7 Floor 2 - Bedroom



Max Dimensions: 9'9" x 9'8"  
Calculated Area: 94 sq. ft  
Included: Yes

Heated: Yes  
Finished: Yes  
Enclosed: Yes  
Contiguous: Yes  
Permitted: Yes  
Wet space: No  
Addition: No  
Conversion: No

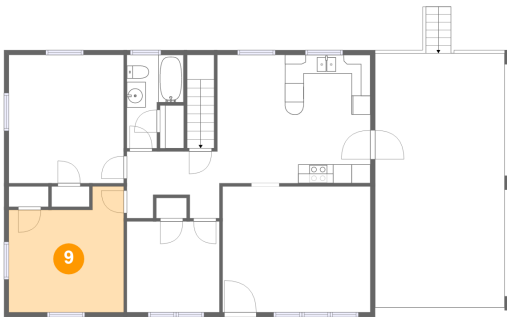
8 Floor 2 - Carport



Max Dimensions: 13'9" x 26'10"  
Calculated Area: 381 sq. ft  
Included: No

Heated: No  
Finished: Yes  
Enclosed: No  
Contiguous: Yes  
Permitted: Yes  
Wet space: No  
Addition: No  
Conversion: No

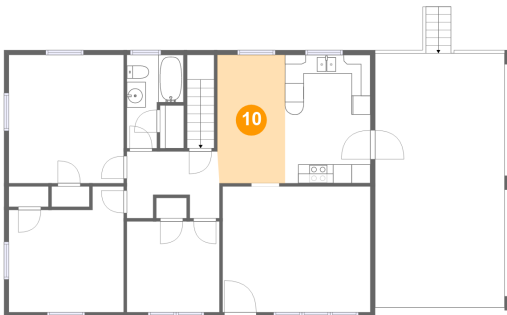
9 Floor 2 - Bedroom



Max Dimensions: 12'2" x 13'4"  
Calculated Area: 140 sq. ft  
Included: Yes

Heated: Yes  
Finished: Yes  
Enclosed: Yes  
Contiguous: Yes  
Permitted: Yes  
Wet space: No  
Addition: No  
Conversion: No

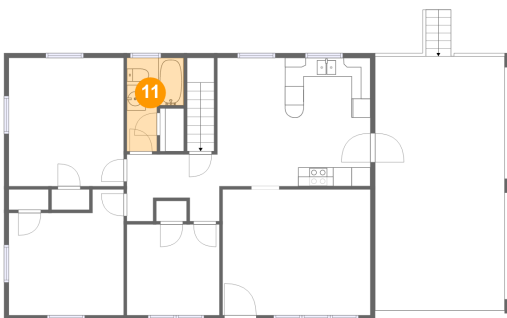
10 Floor 2 - Dining Area



Max Dimensions: 7'2" x 13'7"  
Calculated Area: 97 sq. ft  
Included: Yes

Heated: Yes  
Finished: Yes  
Enclosed: Yes  
Contiguous: Yes  
Permitted: Yes  
Wet space: No  
Addition: No  
Conversion: No

11 Floor 2 - Bath



Max Dimensions: 6'1" x 9'11"  
Calculated Area: 46 sq. ft  
Included: Yes

Heated: Yes  
Finished: Yes  
Enclosed: Yes  
Contiguous: Yes  
Permitted: Yes  
Wet space: Yes  
Addition: No  
Conversion: No

12 Floor 2 - Living Room



Max Dimensions: 15'8" x 13'4"  
Calculated Area: 208 sq. ft  
Included: Yes

Heated: Yes  
Finished: Yes  
Enclosed: Yes  
Contiguous: Yes  
Permitted: Yes  
Wet space: No  
Addition: No  
Conversion: No