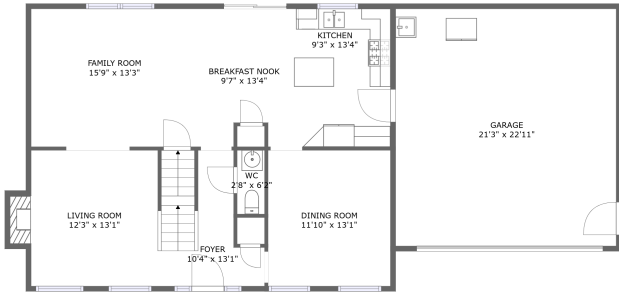
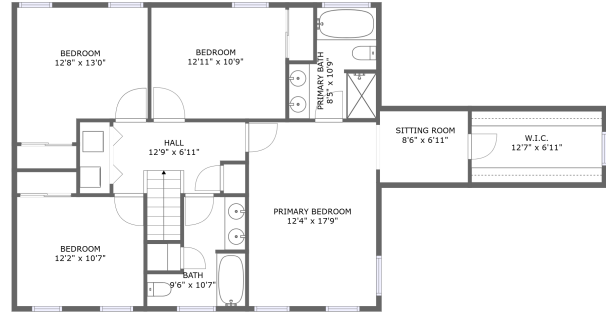


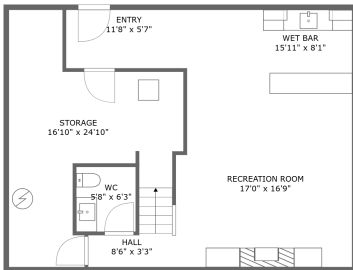
115 Brighton Lane, Adams Township, Mars, Butler County, Pennsylvania, United States,



FLOOR 2



FLOOR 3



FLOOR 1

Property Summary

 **1** garages

 **4** bedrooms

 **2** bathrooms

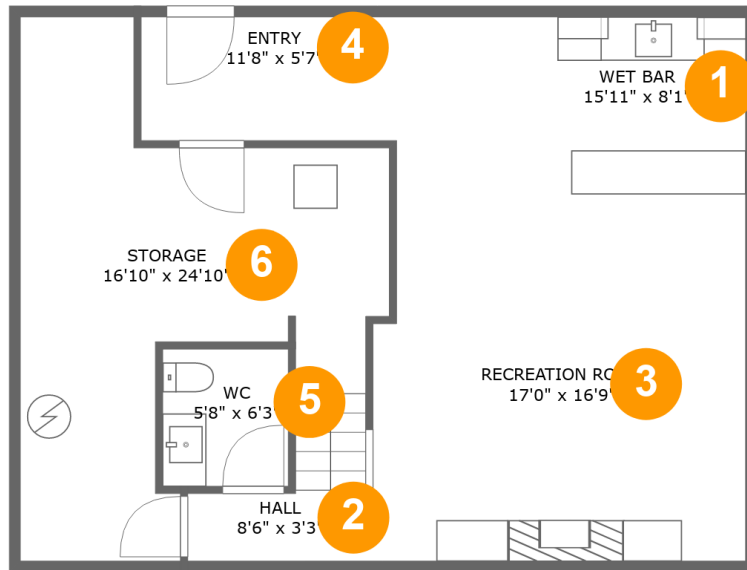
 **2** half baths

 **3** floors

 **2,823** Gross Living Area sqft

 **3,641** total sqft

115 Brighton Lane, Adams Township, Mars, Butler County, Pennsylvania, United States,



Room Dimensions

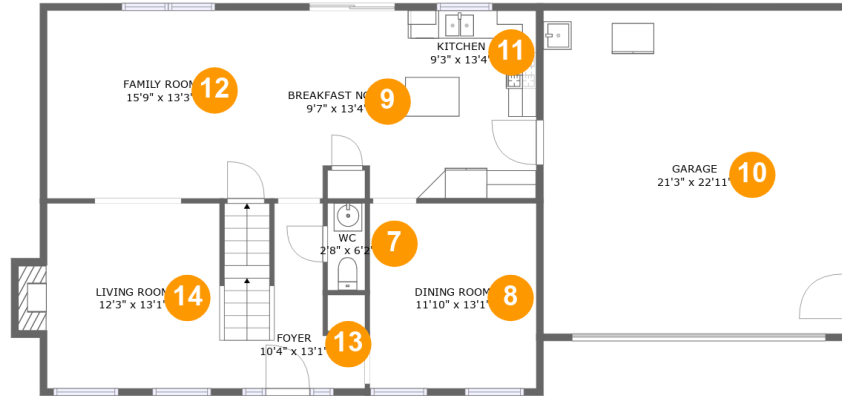
Floor 1

Total sqft: 882

Living area: 596

#	Room name	Dimensions	Area (sqft)	Counted as Living Area
1	Wet Bar	15'11" x 8'1"	129 sq. ft	Yes
2	Hall	8'6" x 3'3"	27 sq. ft	Yes
3	Recreation Room	17'0" x 16'9"	279 sq. ft	Yes
4	Entry	11'8" x 5'7"	66 sq. ft	Yes
5	Wc	5'8" x 6'3"	36 sq. ft	Yes
6	Storage	16'10" x 24'10"	266 sq. ft	No

**115 Brighton Lane, Adams Township, Mars,
Butler County, Pennsylvania, United States,**



Room Dimensions

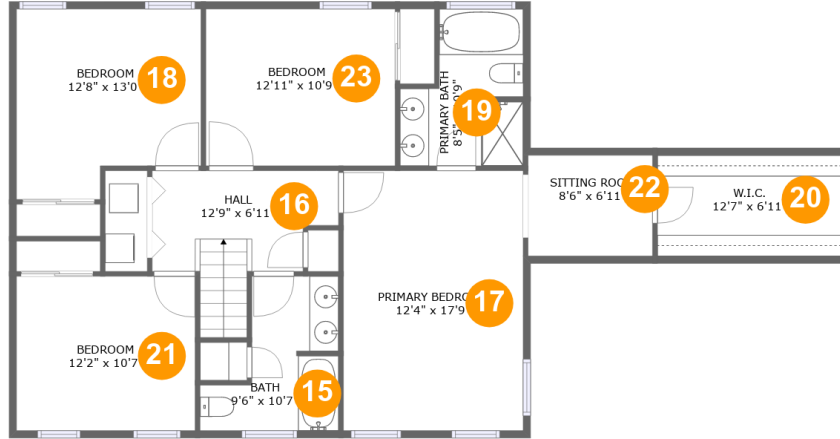
Floor 2

Total sqft: 1523

Living area: 991

#	Room name	Dimensions	Area (sqft)	Counted as Living Area
7	Wc	2'8" x 6'2"	16 sq. ft	Yes
8	Dining Room	11'10" x 13'1"	155 sq. ft	Yes
9	Breakfast Nook	9'7" x 13'4"	120 sq. ft	Yes
10	Garage	21'3" x 22'11"	487 sq. ft	No
11	Kitchen	9'3" x 13'4"	124 sq. ft	Yes
12	Family Room	15'9" x 13'3"	210 sq. ft	Yes
13	Foyer	10'4" x 13'1"	103 sq. ft	Yes
14	Living Room	12'3" x 13'1"	170 sq. ft	Yes

115 Brighton Lane, Adams Township, Mars, Butler County, Pennsylvania, United States,



Room Dimensions

Floor 3

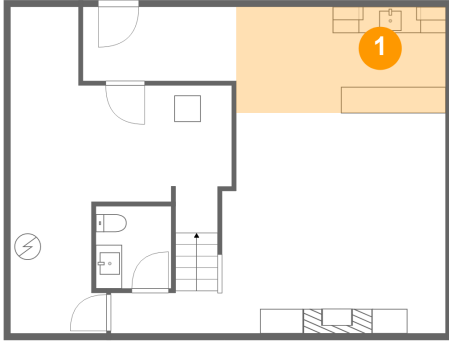
Total sqft: 1236

Living area: 1236

#	Room name	Dimensions	Area (sqft)	Counted as Living Area
15	Bath	9'6" x 10'7"	73 sq. ft	Yes
16	Hall	12'9" x 6'11"	95 sq. ft	Yes
17	Primary Bedroom	12'4" x 17'9"	219 sq. ft	Yes
18	Bedroom	12'8" x 13'0"	149 sq. ft	Yes
19	Primary Bath	8'5" x 10'9"	75 sq. ft	Yes
20	W.i.c.	12'7" x 6'11"	87 sq. ft	Yes
21	Bedroom	12'2" x 10'7"	129 sq. ft	Yes
22	Sitting Room	8'6" x 6'11"	59 sq. ft	Yes
23	Bedroom	12'11" x 10'9"	139 sq. ft	Yes

115 Brighton Lane, Adams Township, Mars, Butler County, Pennsylvania, United States,

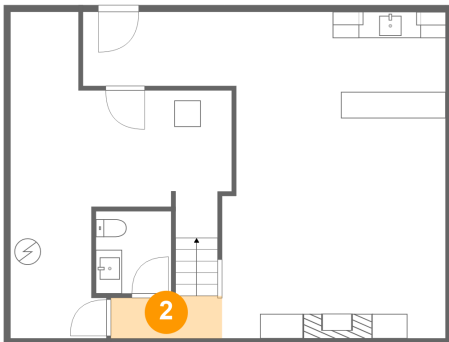
1 Floor 1 - Wet Bar



Dimensions: 15'11" x 8'1"
Area: 129 sq. ft
Counted as Living Area:
Yes

Heated: Yes
Finished: Yes
Enclosed: Yes
Contiguous:
Yes
Permitted: Yes
Wet Space: No
Addition: No
Conversion: No

2 Floor 1 - Hall

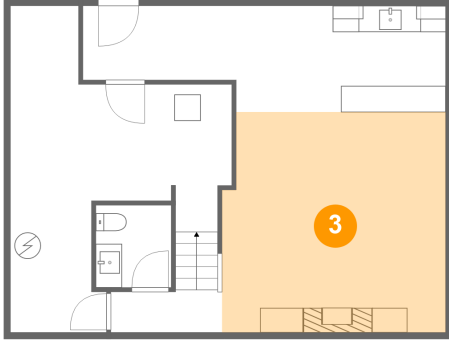


Dimensions: 8'6" x 3'3"
Area: 27 sq. ft
Counted as Living Area:
Yes

Heated: Yes
Finished: Yes
Enclosed: Yes
Contiguous:
Yes
Permitted: Yes
Wet Space: No
Addition: No
Conversion: No

115 Brighton Lane, Adams Township, Mars, Butler County, Pennsylvania, United States,

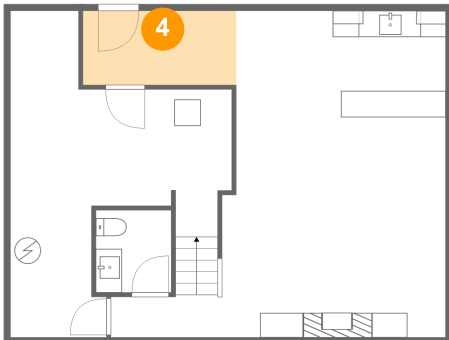
3 Floor 1 - Recreation Room



Dimensions: 17'0" x 16'9"
Area: 279 sq. ft
Counted as Living Area:
Yes

Heated: Yes
Finished: Yes
Enclosed: Yes
Contiguous:
Yes
Permitted: Yes
Wet Space: No
Addition: No
Conversion: No

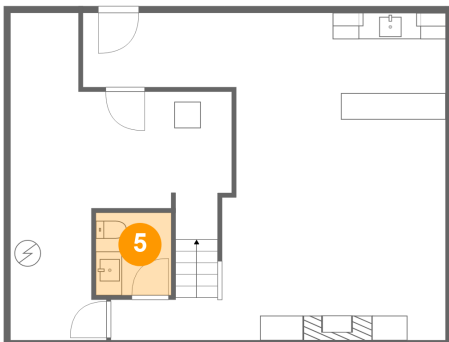
4 Floor 1 - Entry



Dimensions: 11'8" x 5'7"
Area: 66 sq. ft
Counted as Living Area:
Yes

Heated: Yes
Finished: Yes
Enclosed: Yes
Contiguous:
Yes
Permitted: Yes
Wet Space: No
Addition: No
Conversion: No

5 Floor 1 - Wc

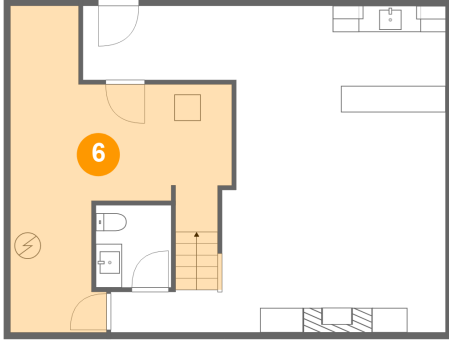


Dimensions: 5'8" x 6'3"
Area: 36 sq. ft
Counted as Living Area:
Yes

Heated: Yes
Finished: Yes
Enclosed: Yes
Contiguous:
Yes
Permitted: Yes
Wet Space: Yes
Addition: No
Conversion: No

115 Brighton Lane, Adams Township, Mars, Butler County, Pennsylvania, United States,

6 Floor 1 - Storage



Dimensions: 16'10" x 24'10"
Area: 266 sq. ft
Counted as Living Area: No

Heated: No
Finished: No
Enclosed: No
Contiguous: Yes
Permitted: Yes
Wet Space: No
Addition: No
Conversion: No

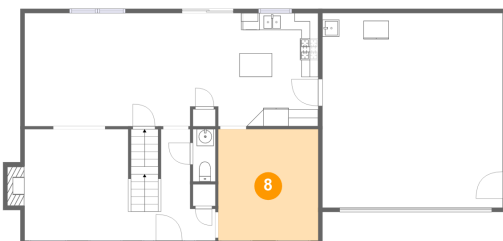
7 Floor 2 - Wc



Dimensions: 2'8" x 6'2"
Area: 16 sq. ft
Counted as Living Area:
Yes

Heated: Yes
Finished: Yes
Enclosed: Yes
Contiguous:
Yes
Permitted: Yes
Wet Space: Yes
Addition: No
Conversion: No

8 Floor 2 - Dining Room

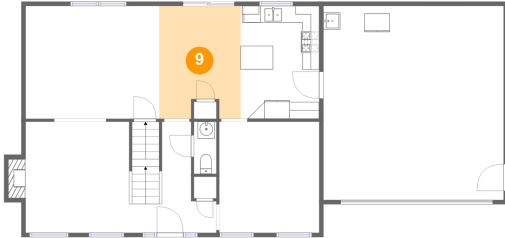


Dimensions: 11'10" x 13'1"
Area: 155 sq. ft
Counted as Living Area:
Yes

Heated: Yes
Finished: Yes
Enclosed: Yes
Contiguous:
Yes
Permitted: Yes
Wet Space: No
Addition: No
Conversion: No

115 Brighton Lane, Adams Township, Mars, Butler County, Pennsylvania, United States,

9 Floor 2 - Breakfast Nook



Dimensions: 9'7" x 13'4"
Area: 120 sq. ft
Counted as Living Area:
Yes

Heated: Yes
Finished: Yes
Enclosed: Yes
Contiguous:
Yes
Permitted: Yes
Wet Space: No
Addition: No
Conversion: No

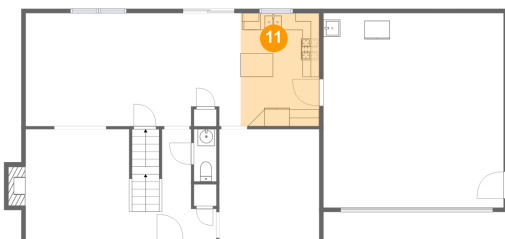
10 Floor 2 - Garage



Dimensions: 21'3" x 22'11"
Area: 487 sq. ft
Counted as Living Area: No

Heated: No
Finished: No
Enclosed: Yes
Contiguous: Yes
Permitted: Yes
Wet Space: No
Addition: No
Conversion: No

11 Floor 2 - Kitchen



Dimensions: 9'3" x 13'4"
Area: 124 sq. ft
Counted as Living Area:
Yes

Heated: Yes
Finished: Yes
Enclosed: Yes
Contiguous:
Yes
Permitted: Yes
Wet Space: No
Addition: No
Conversion: No

115 Brighton Lane, Adams Township, Mars, Butler County, Pennsylvania, United States,

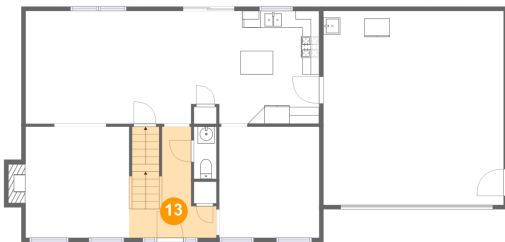
12 Floor 2 - Family Room



Dimensions: 15'9" x 13'3"
Area: 210 sq. ft
Counted as Living Area:
Yes

Heated: Yes
Finished: Yes
Enclosed: Yes
Contiguous:
Yes
Permitted: Yes
Wet Space: No
Addition: No
Conversion: No

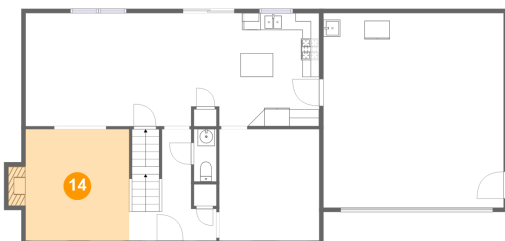
13 Floor 2 - Foyer



Dimensions: 10'4" x 13'1"
Area: 103 sq. ft
Counted as Living Area:
Yes

Heated: Yes
Finished: Yes
Enclosed: Yes
Contiguous:
Yes
Permitted: Yes
Wet Space: No
Addition: No
Conversion: No

14 Floor 2 - Living Room



Dimensions: 12'3" x 13'1"
Area: 170 sq. ft
Counted as Living Area:
Yes

Heated: Yes
Finished: Yes
Enclosed: Yes
Contiguous:
Yes
Permitted: Yes
Wet Space: No
Addition: No
Conversion: No

115 Brighton Lane, Adams Township, Mars, Butler County, Pennsylvania, United States,

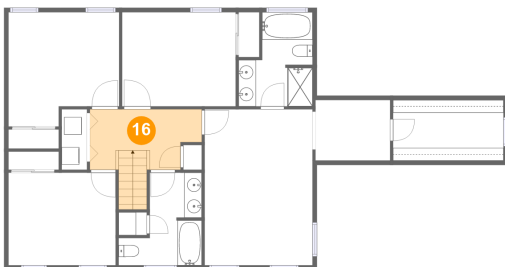
15 Floor 3 - Bath



Dimensions: 9'6" x 10'7"
Area: 73 sq. ft
Counted as Living Area:
Yes

Heated: Yes
Finished: Yes
Enclosed: Yes
Contiguous:
Yes
Permitted: Yes
Wet Space: Yes
Addition: No
Conversion: No

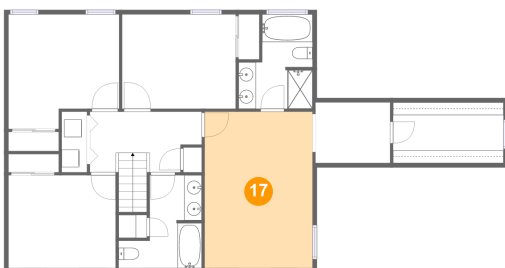
16 Floor 3 - Hall



Dimensions: 12'9" x 6'11"
Area: 95 sq. ft
Counted as Living Area:
Yes

Heated: Yes
Finished: Yes
Enclosed: Yes
Contiguous:
Yes
Permitted: Yes
Wet Space: No
Addition: No
Conversion: No

17 Floor 3 - Primary Bedroom



Dimensions: 12'4" x 17'9"
Area: 219 sq. ft
Counted as Living Area:
Yes

Heated: Yes
Finished: Yes
Enclosed: Yes
Contiguous:
Yes
Permitted: Yes
Wet Space: No
Addition: No
Conversion: No

**115 Brighton Lane, Adams Township, Mars,
Butler County, Pennsylvania, United States,**

18 Floor 3 - Bedroom



Dimensions: 12'8" x 13'0"
 Area: 149 sq. ft
 Counted as Living Area:
 Yes

Heated: Yes
 Finished: Yes
 Enclosed: Yes
 Contiguous:
 Yes
 Permitted: Yes
 Wet Space: No
 Addition: No
 Conversion: No

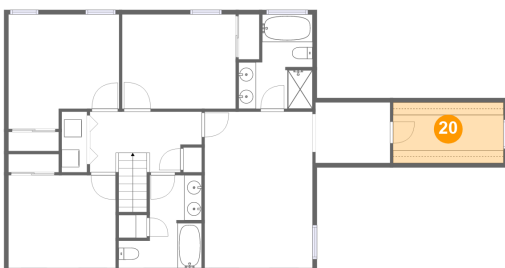
19 Floor 3 - Primary Bath



Dimensions: 8'5" x 10'9"
 Area: 75 sq. ft
 Counted as Living Area:
 Yes

Heated: Yes
 Finished: Yes
 Enclosed: Yes
 Contiguous:
 Yes
 Permitted: Yes
 Wet Space: Yes
 Addition: No
 Conversion: No

20 Floor 3 - W.i.c.



Dimensions: 12'7" x 6'11"
 Area: 87 sq. ft
 Counted as Living Area:
 Yes

Heated: Yes
 Finished: Yes
 Enclosed: Yes
 Contiguous:
 Yes
 Permitted: Yes
 Wet Space: No
 Addition: No
 Conversion: No

115 Brighton Lane, Adams Township, Mars, Butler County, Pennsylvania, United States,

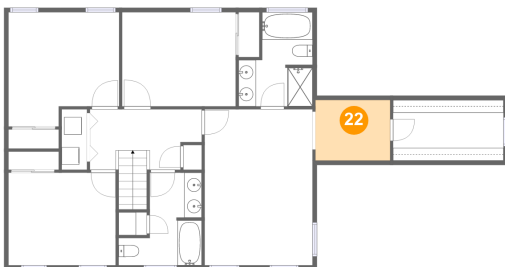
21 Floor 3 - Bedroom



Dimensions: 12'2" x 10'7"
Area: 129 sq. ft
Counted as Living Area:
Yes

Heated: Yes
Finished: Yes
Enclosed: Yes
Contiguous:
Yes
Permitted: Yes
Wet Space: No
Addition: No
Conversion: No

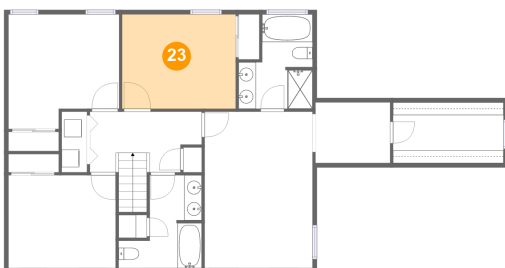
22 Floor 3 - Sitting Room



Dimensions: 8'6" x 6'11"
Area: 59 sq. ft
Counted as Living Area:
Yes

Heated: Yes
Finished: Yes
Enclosed: Yes
Contiguous:
Yes
Permitted: Yes
Wet Space: No
Addition: No
Conversion: No

23 Floor 3 - Bedroom



Dimensions: 12'11" x 10'9"
Area: 139 sq. ft
Counted as Living Area:
Yes

Heated: Yes
Finished: Yes
Enclosed: Yes
Contiguous:
Yes
Permitted: Yes
Wet Space: No
Addition: No
Conversion: No