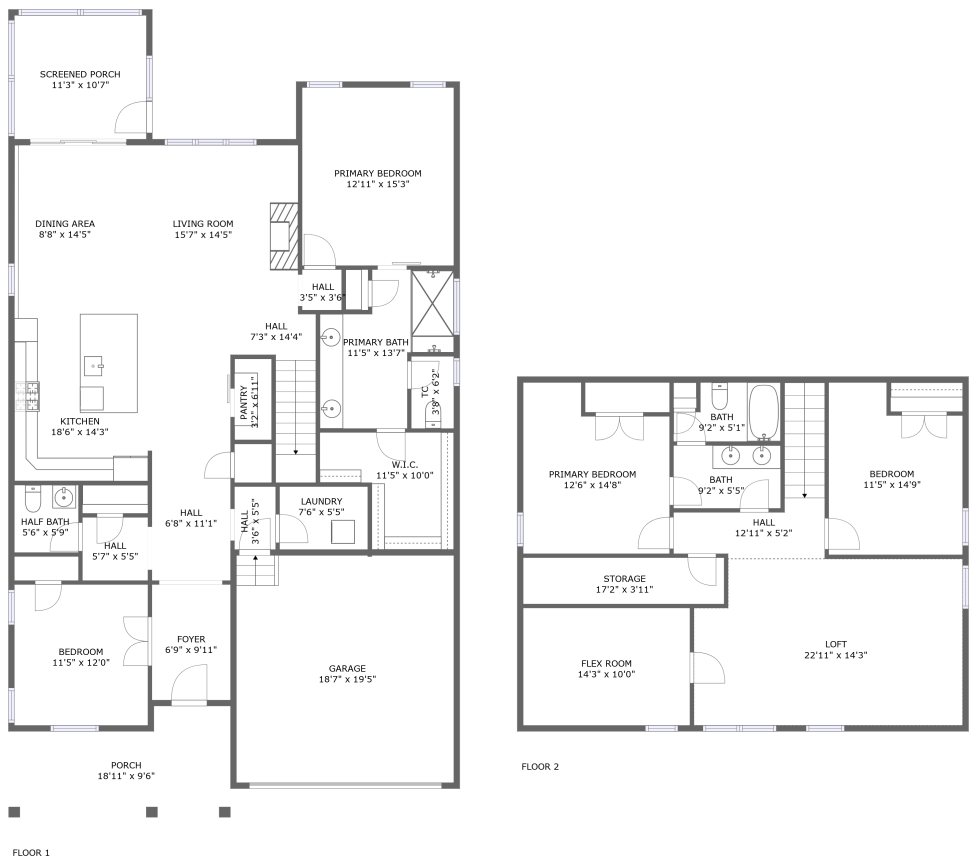


Home report

260 Dry Canyon Drive, Wendell, Wake County, North Carolina,
United States, 27591




Total GLA: 2812 sq. ft

Floor 1: 1715 sq. ft, Floor 2: 1097 sq. ft

Excluded: Garage 383 sq. ft, Screened porch 136 sq. ft, Porch 153 sq. ft, Storage 70 sq. ft

Property summary

 **2** Floors

 **5** Bedrooms

 **2** Bathrooms

Home report

**260 Dry Canyon Drive, Wendell, Wake County, North Carolina,
United States, 27591**



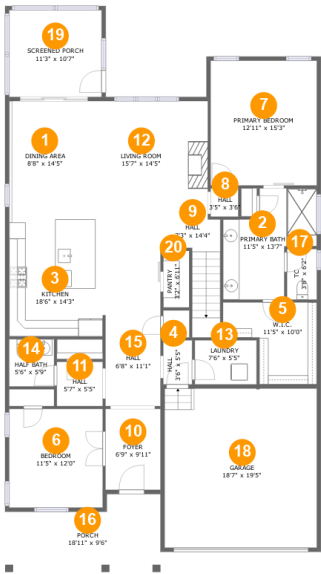
1
Half baths



1
Garages

Home report

260 Dry Canyon Drive, Wendell, Wake County, North Carolina,
United States, 27591



Room dimensions

Floor 1 Total:1715sqft Excluded: 672sqft

#		Max Dimensions	sqft	Included
1	Dining Area	8'8" x 14'5"	125 sq. ft	Yes
2	Primary Bath	11'5" x 13'7"	113 sq. ft	Yes
3	Kitchen	18'6" x 14'3"	245 sq. ft	Yes
4	Hall	3'6" x 5'5"	19 sq. ft	Yes
5	W.I.C.	11'5" x 10'0"	89 sq. ft	Yes
6	Bedroom	11'5" x 12'0"	137 sq. ft	Yes
7	Primary Bedroom	12'11" x 15'3"	197 sq. ft	Yes
8	Hall	3'5" x 3'6"	12 sq. ft	Yes
9	Hall	7'3" x 14'4"	63 sq. ft	Yes
10	Foyer	6'9" x 9'11"	66 sq. ft	Yes
11	Hall	5'7" x 5'5"	30 sq. ft	Yes

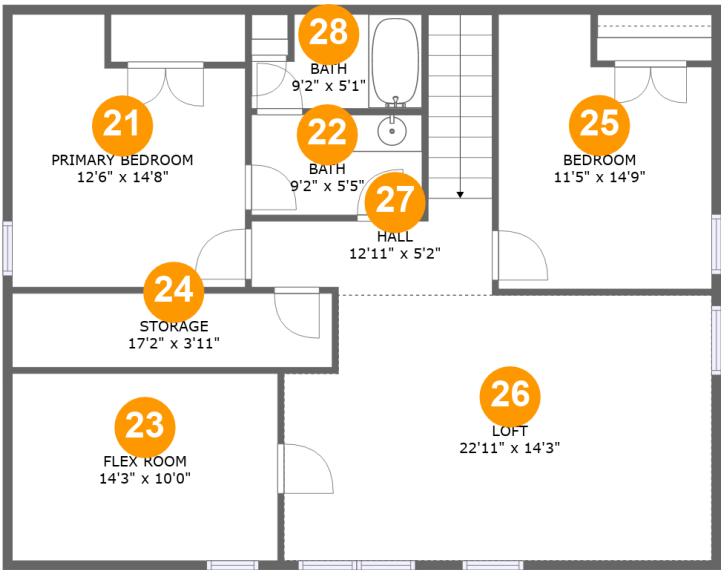
Home report

**260 Dry Canyon Drive, Wendell, Wake County, North Carolina,
United States, 27591**

#		Max Dimensions	sqft	Included
12	Living Room	15'7" x 14'5"	225 sq. ft	Yes
13	Laundry	7'6" x 5'5"	41 sq. ft	Yes
14	Half Bath	5'6" x 5'9"	32 sq. ft	Yes
15	Hall	6'8" x 11'1"	74 sq. ft	Yes
16	Porch	18'11" x 9'6"	153 sq. ft	No
17	Tc	3'8" x 6'2"	22 sq. ft	Yes
18	Garage	18'7" x 19'5"	360 sq. ft	No
19	Screened Porch	11'3" x 10'7"	119 sq. ft	No
20	Pantry	3'2" x 6'11"	22 sq. ft	Yes

Home report

260 Dry Canyon Drive, Wendell, Wake County, North Carolina,
United States, 27591



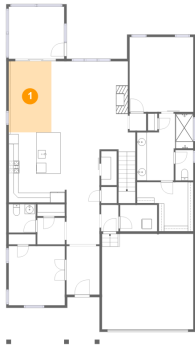
Room dimensions

Floor 2 Total:1097sqft Excluded: 70sqft

#		Max Dimensions	sqft	Included
21	Primary Bedroom	12'6" x 14'8"	161 sq. ft	Yes
22	Bath	9'2" x 5'5"	49 sq. ft	Yes
23	Flex Room	14'3" x 10'0"	143 sq. ft	Yes
24	Storage	17'2" x 3'11"	68 sq. ft	No
25	Bedroom	11'5" x 14'9"	150 sq. ft	Yes
26	Loft	22'11" x 14'3"	315 sq. ft	Yes
27	Hall	12'11" x 5'2"	87 sq. ft	Yes
28	Bath	9'2" x 5'1"	40 sq. ft	Yes

260 Dry Canyon Drive, Wendell, Wake County, North Carolina,
United States, 27591

1 Floor 1 - Dining Area



Max Dimensions: 8'8" x 14'5"
Calculated Area: 125 sq. ft
Included: Yes

Heated: Yes
Finished: Yes
Enclosed: Yes
Contiguous: Yes
Permitted: Yes
Wet space: No
Addition: No
Conversion: No

2 Floor 1 - Primary Bath



Max Dimensions: 11'5" x 13'7"
Calculated Area: 113 sq. ft
Included: Yes

Heated: Yes
Finished: Yes
Enclosed: Yes
Contiguous: Yes
Permitted: Yes
Wet space: Yes
Addition: No
Conversion: No

260 Dry Canyon Drive, Wendell, Wake County, North Carolina,
United States, 27591

3 Floor 1 - Kitchen



Max Dimensions: 18'6" x 14'3"
Calculated Area: 245 sq. ft
Included: Yes

Heated: Yes
Finished: Yes
Enclosed: Yes
Contiguous: Yes
Permitted: Yes
Wet space: No
Addition: No
Conversion: No

4 Floor 1 - Hall



Max Dimensions: 3'6" x 5'5"
Calculated Area: 19 sq. ft
Included: Yes

Heated: Yes
Finished: Yes
Enclosed: Yes
Contiguous: Yes
Permitted: Yes
Wet space: No
Addition: No
Conversion: No

5 Floor 1 - W.I.C.



Max Dimensions: 11'5" x 10'0"
Calculated Area: 89 sq. ft
Included: Yes

Heated: Yes
Finished: Yes
Enclosed: Yes
Contiguous: Yes
Permitted: Yes
Wet space: No
Addition: No
Conversion: No

260 Dry Canyon Drive, Wendell, Wake County, North Carolina,
United States, 27591

6 Floor 1 - Bedroom



Max Dimensions: 11'5" x 12'0"
Calculated Area: 137 sq. ft
Included: Yes

Heated: Yes
Finished: Yes
Enclosed: Yes
Contiguous: Yes
Permitted: Yes
Wet space: No
Addition: No
Conversion: No

7 Floor 1 - Primary Bedroom



Max Dimensions: 12'11" x 15'3"
Calculated Area: 197 sq. ft
Included: Yes

Heated: Yes
Finished: Yes
Enclosed: Yes
Contiguous: Yes
Permitted: Yes
Wet space: No
Addition: No
Conversion: No

8 Floor 1 - Hall

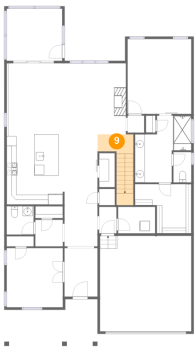


Max Dimensions: 3'5" x 3'6"
Calculated Area: 12 sq. ft
Included: Yes

Heated: Yes
Finished: Yes
Enclosed: Yes
Contiguous: Yes
Permitted: Yes
Wet space: No
Addition: No
Conversion: No

260 Dry Canyon Drive, Wendell, Wake County, North Carolina,
United States, 27591

9 Floor 1 - Hall



Max Dimensions: 7'3" x 14'4"
Calculated Area: 63 sq. ft
Included: Yes

Heated: Yes
Finished: Yes
Enclosed: Yes
Contiguous: Yes
Permitted: Yes
Wet space: No
Addition: No
Conversion: No

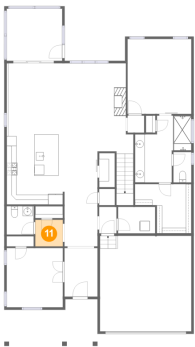
10 Floor 1 - Foyer



Max Dimensions: 6'9" x 9'11"
Calculated Area: 66 sq. ft
Included: Yes

Heated: Yes
Finished: Yes
Enclosed: Yes
Contiguous: Yes
Permitted: Yes
Wet space: No
Addition: No
Conversion: No

11 Floor 1 - Hall



Max Dimensions: 5'7" x 5'5"
Calculated Area: 30 sq. ft
Included: Yes

Heated: Yes
Finished: Yes
Enclosed: Yes
Contiguous: Yes
Permitted: Yes
Wet space: No
Addition: No
Conversion: No

260 Dry Canyon Drive, Wendell, Wake County, North Carolina,
United States, 27591

12 Floor 1 - Living Room



Max Dimensions: 15'7" x 14'5"
Calculated Area: 225 sq. ft
Included: Yes

Heated: Yes
Finished: Yes
Enclosed: Yes
Contiguous: Yes
Permitted: Yes
Wet space: No
Addition: No
Conversion: No

13 Floor 1 - Laundry



Max Dimensions: 7'6" x 5'5"
Calculated Area: 41 sq. ft
Included: Yes

Heated: Yes
Finished: Yes
Enclosed: Yes
Contiguous: Yes
Permitted: Yes
Wet space: No
Addition: No
Conversion: No

14 Floor 1 - Half Bath



Max Dimensions: 5'6" x 5'9"
Calculated Area: 32 sq. ft
Included: Yes

Heated: Yes
Finished: Yes
Enclosed: Yes
Contiguous: Yes
Permitted: Yes
Wet space: Yes
Addition: No
Conversion: No

260 Dry Canyon Drive, Wendell, Wake County, North Carolina,
United States, 27591

15 Floor 1 - Hall



Max Dimensions: 6'8" x 11'1"
Calculated Area: 74 sq. ft
Included: Yes

Heated: Yes
Finished: Yes
Enclosed: Yes
Contiguous: Yes
Permitted: Yes
Wet space: No
Addition: No
Conversion: No

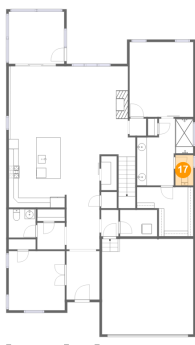
16 Floor 1 - Porch



Max Dimensions: 18'11" x 9'6"
Calculated Area: 153 sq. ft
Included: No

Heated: No
Finished: Yes
Enclosed: No
Contiguous: Yes
Permitted: Yes
Wet space: No
Addition: No
Conversion: No

17 Floor 1 - Tc

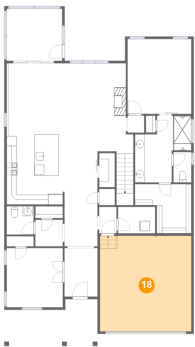


Max Dimensions: 3'8" x 6'2"
Calculated Area: 22 sq. ft
Included: Yes

Heated: Yes
Finished: Yes
Enclosed: Yes
Contiguous: Yes
Permitted: Yes
Wet space: Yes
Addition: No
Conversion: No

260 Dry Canyon Drive, Wendell, Wake County, North Carolina,
United States, 27591

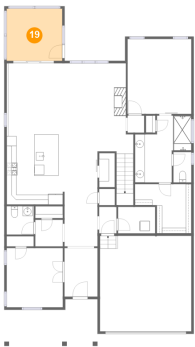
18 Floor 1 - Garage



Max Dimensions: 18'7" x 19'5"
Calculated Area: 360 sq. ft
Included: No

Heated: No
Finished: No
Enclosed: Yes
Contiguous: Yes
Permitted: Yes
Wet space: No
Addition: No
Conversion: No

19 Floor 1 - Screened Porch



Max Dimensions: 11'3" x 10'7"
Calculated Area: 119 sq. ft
Included: No

Heated: No
Finished: Yes
Enclosed: No
Contiguous: Yes
Permitted: Yes
Wet space: No
Addition: No
Conversion: No

20 Floor 1 - Pantry

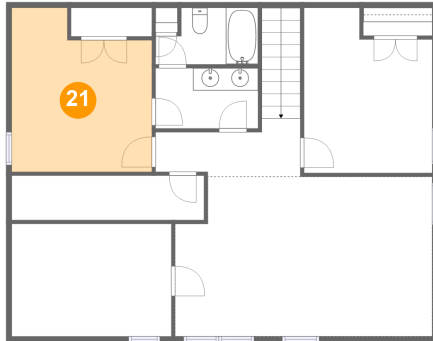


Max Dimensions: 3'2" x 6'11"
Calculated Area: 22 sq. ft
Included: Yes

Heated: Yes
Finished: Yes
Enclosed: Yes
Contiguous: Yes
Permitted: Yes
Wet space: No
Addition: No
Conversion: No

260 Dry Canyon Drive, Wendell, Wake County, North Carolina,
United States, 27591

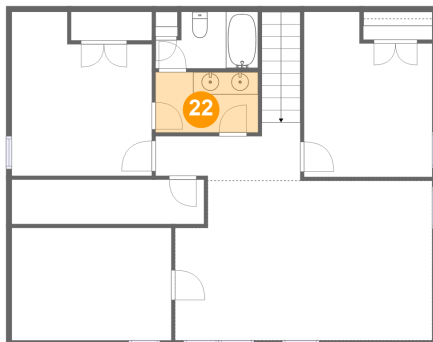
21 Floor 2 - Primary Bedroom



Max Dimensions: 12'6" x 14'8"
Calculated Area: 161 sq. ft
Included: Yes

Heated: Yes
Finished: Yes
Enclosed: Yes
Contiguous: Yes
Permitted: Yes
Wet space: No
Addition: No
Conversion: No

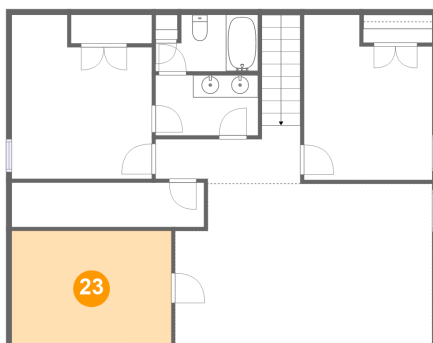
22 Floor 2 - Bath



Max Dimensions: 9'2" x 5'5"
Calculated Area: 49 sq. ft
Included: Yes

Heated: Yes
Finished: Yes
Enclosed: Yes
Contiguous: Yes
Permitted: Yes
Wet space: Yes
Addition: No
Conversion: No

23 Floor 2 - Flex Room

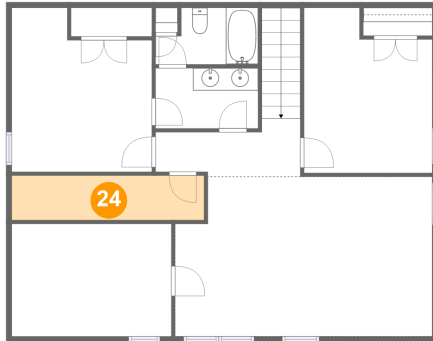


Max Dimensions: 14'3" x 10'0"
Calculated Area: 143 sq. ft
Included: Yes

Heated: Yes
Finished: Yes
Enclosed: Yes
Contiguous: Yes
Permitted: Yes
Wet space: No
Addition: No
Conversion: No

260 Dry Canyon Drive, Wendell, Wake County, North Carolina,
United States, 27591

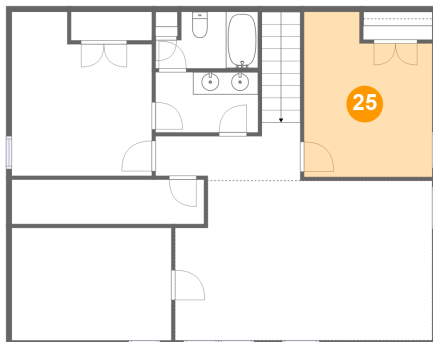
24 Floor 2 - Storage



Max Dimensions: 17'2" x 3'11"
Calculated Area: 68 sq. ft
Included: No

Heated: No
Finished: No
Enclosed: No
Contiguous: Yes
Permitted: Yes
Wet space: No
Addition: No
Conversion: No

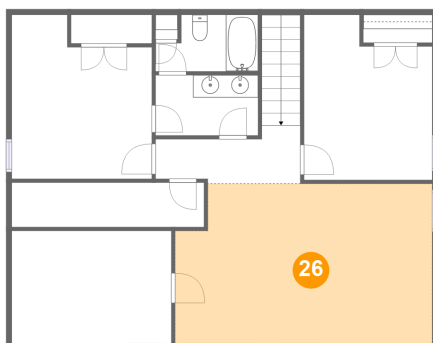
25 Floor 2 - Bedroom



Max Dimensions: 11'5" x 14'9"
Calculated Area: 150 sq. ft
Included: Yes

Heated: Yes
Finished: Yes
Enclosed: Yes
Contiguous: Yes
Permitted: Yes
Wet space: No
Addition: No
Conversion: No

26 Floor 2 - Loft

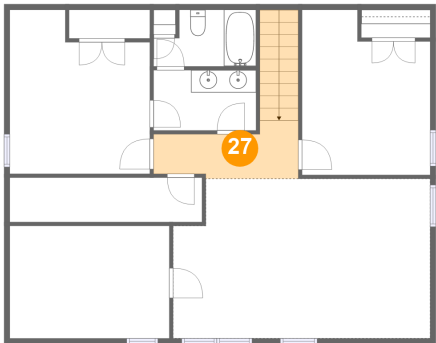


Max Dimensions: 22'11" x 14'3"
Calculated Area: 315 sq. ft
Included: Yes

Heated: Yes
Finished: Yes
Enclosed: Yes
Contiguous: Yes
Permitted: Yes
Wet space: No
Addition: No
Conversion: No

260 Dry Canyon Drive, Wendell, Wake County, North Carolina,
United States, 27591

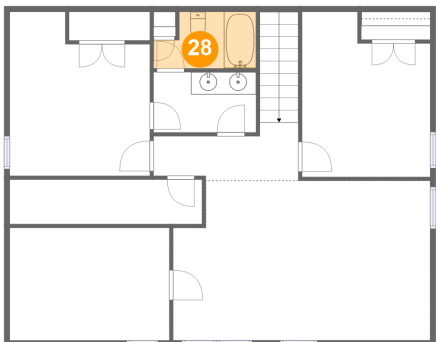
27 Floor 2 - Hall



Max Dimensions: 12'11" x 5'2"
Calculated Area: 87 sq. ft
Included: Yes

Heated: Yes
Finished: Yes
Enclosed: Yes
Contiguous: Yes
Permitted: Yes
Wet space: No
Addition: No
Conversion: No

28 Floor 2 - Bath



Max Dimensions: 9'2" x 5'1"
Calculated Area: 40 sq. ft
Included: Yes

Heated: Yes
Finished: Yes
Enclosed: Yes
Contiguous: Yes
Permitted: Yes
Wet space: Yes
Addition: No
Conversion: No