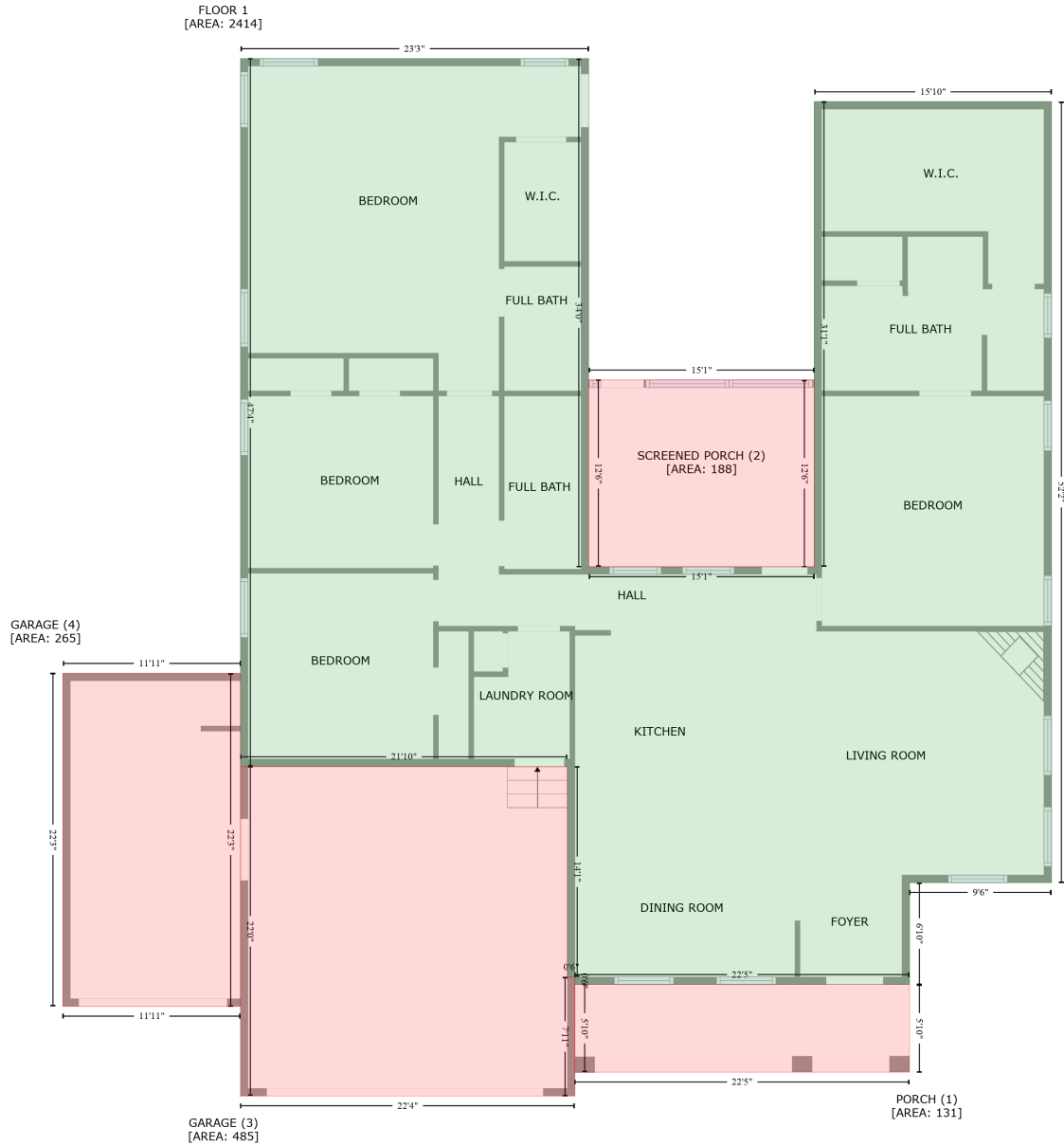


548 Brazil Nut Lane ,Smithfield,North Carolina,United States

Gross Living Area: 2414 sq. ft



Space

Area (sq. ft)

Calculation Coordinate Polygon Area Algorithm using inches

FLOOR 1
(Living area)

2414

$$\begin{aligned}
 & -((421.8 + 421.8) * (-42.9 - 364.7) + (421.8 + 602.9) * (364.7 - 364.7) + (602.9 + 602.9) * (364.7 - \\
 & -8.4) + (602.9 + 793.2) * (-8.4 - -8.4) + (793.2 + 793.2) * (-8.4 - 617.9) + (793.2 + 679.3) * (617.9 - \\
 & 617.9) + (679.3 + 679.3) * (617.9 - 699.6) + (679.3 + 410.8) * (699.6 - 699.6) + (410.8 + 410.8) * \\
 & (699.6 - 693.6) + (410.8 + 404.8) * (693.6 - 693.6) + (404.8 + 404.8) * (693.6 - 524.9) + (404.8 + \\
 & 142.6) * (524.9 - 524.9) + (142.6 + 142.6) * (524.9 - -42.9) + (142.6 + 421.8) * (-42.9 - -42.9)) * \\
 & 0.5 * 0.00694
 \end{aligned}$$

548 Brazil Nut Lane ,Smithfield,North Carolina,United States

Gross Living Area: 2414 sq. ft

Space	Area (sq. ft)	Calculation <small>Coordinate Polygon Area Algorithm using inches</small>
PORCH (Non-living area)	131	$-((679.3 + 679.3) * (699.6 - 770) + (679.3 + 410.8) * (770 - 770) + (410.8 + 410.8) * (770 - 699.6) + (410.8 + 679.3) * (699.6 - 699.6)) * 0.5 * 0.00694$
SCREENED PORCH (Non-living area)	188	$-((602.9 + 602.9) * (214.8 - 364.7) + (602.9 + 421.8) * (364.7 - 364.7) + (421.8 + 421.8) * (364.7 - 214.8) + (421.8 + 602.9) * (214.8 - 214.8)) * 0.5 * 0.00694$
GARAGE (Non-living area)	485	$-((404.8 + 404.8) * (524.9 - 693.6) + (404.8 + 410.8) * (693.6 - 693.6) + (410.8 + 410.8) * (693.6 - 789) + (410.8 + 142.6) * (789 - 789) + (142.6 + 142.6) * (789 - 524.9) + (142.6 + 404.8) * (524.9 - 524.9)) * 0.5 * 0.00694$
GARAGE (Non-living area)	265	$-((142.6 + 142.6) * (450 - 717.1) + (142.6 + 0) * (717.1 - 717.1) + (0 + 0) * (717.1 - 450) + (0 + 142.6) * (450 - 450)) * 0.5 * 0.00694$