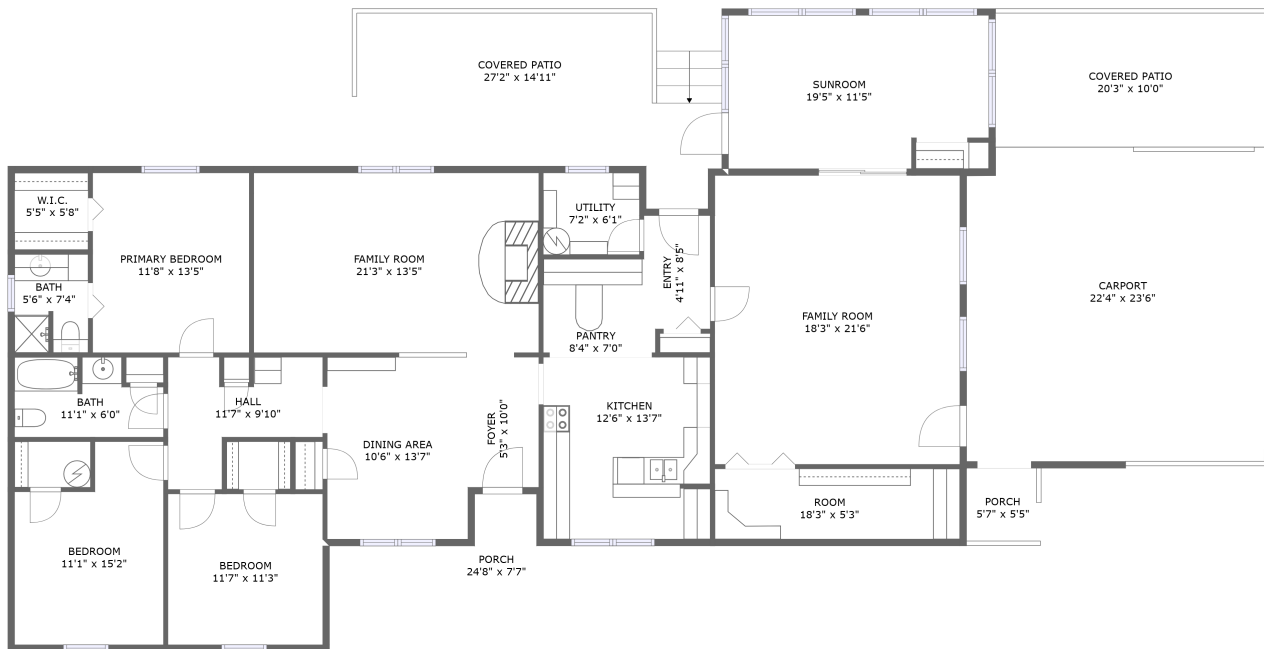



# 855 County Rd 2054, Nacogdoches, TX, US



FLOOR 1

## Property summary


 **0** Garages

 **3** Bedrooms

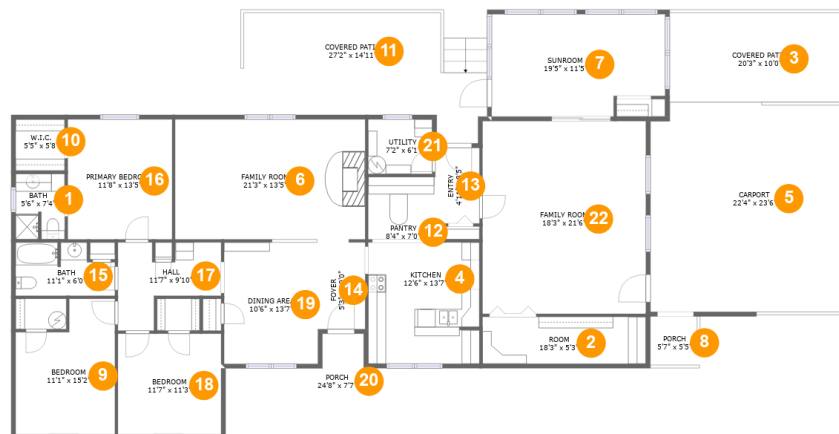
 **2** Bathrooms

 **0** Half baths

 **1** Floors

 **2,422** Gross living area sqft

 **3,614** Total sqft

**855 County Rd 2054, Nacogdoches, TX, US****Room dimensions****Floor 1****Total sqft: 3614 Living area: 2422**

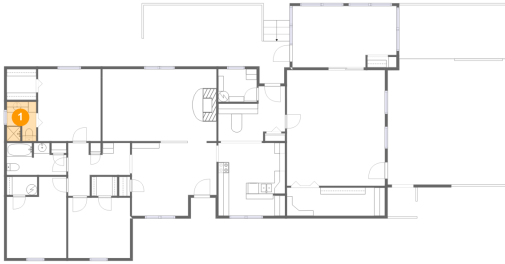
#		Dimensions	sqft	Counted as living area
1	Bath	5'6" x 7'4"	39 sq. ft	Yes
2	Room	18'3" x 5'3"	96 sq. ft	Yes
3	Covered Patio	20'3" x 10'0"	202 sq. ft	No
4	Kitchen	12'6" x 13'7"	168 sq. ft	Yes
5	Carport	22'4" x 23'6"	519 sq. ft	No
6	Family Room	21'3" x 13'5"	285 sq. ft	Yes
7	Sunroom	19'5" x 11'5"	209 sq. ft	Yes
8	Porch	5'7" x 5'5"	30 sq. ft	No
9	Bedroom	11'1" x 15'2"	146 sq. ft	Yes
10	W.I.C.	5'5" x 5'8"	31 sq. ft	Yes
11	Covered Patio	27'2" x 14'11"	325 sq. ft	No

**855 County Rd 2054,Nacogdoches,TX,US**

#		Dimensions	sqft	Counted as living area
12	Pantry	8'4" x 7'0"	56 sq. ft	Yes
13	Entry	4'11" x 8'5"	40 sq. ft	Yes
14	Foyer	5'3" x 10'0"	52 sq. ft	Yes
15	Bath	11'1" x 6'0"	58 sq. ft	Yes
16	Primary Bedroom	11'8" x 13'5"	157 sq. ft	Yes
17	Hall	11'7" x 9'10"	79 sq. ft	Yes
18	Bedroom	11'7" x 11'3"	130 sq. ft	Yes
19	Dining Area	10'6" x 13'7"	144 sq. ft	Yes
20	Porch	24'8" x 7'7"	111 sq. ft	No
21	Utility	7'2" x 6'1"	44 sq. ft	Yes
22	Family Room	18'3" x 21'6"	394 sq. ft	Yes

# 855 County Rd 2054, Nacogdoches, TX, US

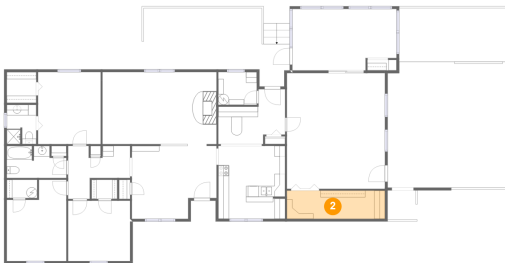
## 1 Floor 1 - Bath



Dimensions: 5'6" x 7'4"  
Area: 39 sq. ft  
Counted as living area: Yes

Heated: Yes  
Finished: Yes  
Enclosed: Yes  
Contiguous: Yes  
Permitted: Yes  
Wet space: Yes  
Addition: No  
Conversion: No

## 2 Floor 1 - Room

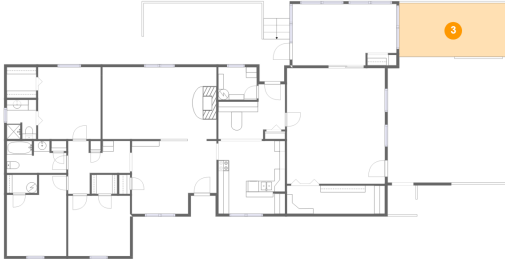


Dimensions: 18'3" x 5'3"  
Area: 96 sq. ft  
Counted as living area: Yes

Heated: Yes  
Finished: Yes  
Enclosed: Yes  
Contiguous: Yes  
Permitted: Yes  
Wet space: No  
Addition: No  
Conversion: No

# 855 County Rd 2054, Nacogdoches, TX, US

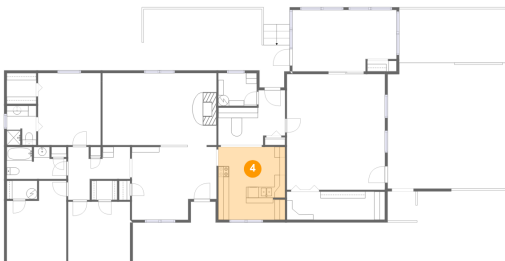
## 3 Floor 1 - Covered Patio



Dimensions: 20'3" x 10'0"  
Area: 202 sq. ft  
Counted as living area: No

Heated: No  
Finished: Yes  
Enclosed: No  
Contiguous: Yes  
Permitted: Yes  
Wet space: No  
Addition: No  
Conversion: No

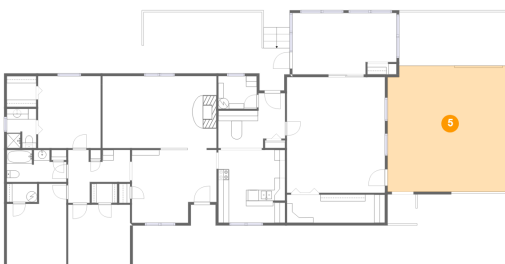
## 4 Floor 1 - Kitchen



Dimensions: 12'6" x 13'7"  
Area: 168 sq. ft  
Counted as living area: Yes

Heated: Yes  
Finished: Yes  
Enclosed: Yes  
Contiguous: Yes  
Permitted: Yes  
Wet space: No  
Addition: No  
Conversion: No

## 5 Floor 1 - Carport

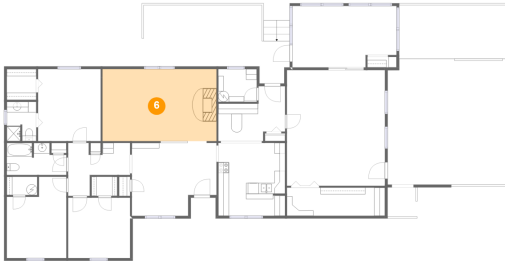


Dimensions: 22'4" x 23'6"  
Area: 519 sq. ft  
Counted as living area: No

Heated: No  
Finished: Yes  
Enclosed: No  
Contiguous: Yes  
Permitted: Yes  
Wet space: No  
Addition: No  
Conversion: No

# 855 County Rd 2054, Nacogdoches, TX, US

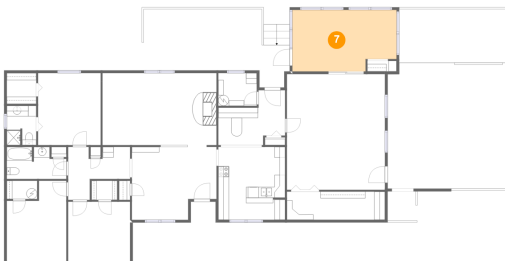
## 6 Floor 1 - Family Room



Dimensions: 21'3" x 13'5"  
Area: 285 sq. ft  
Counted as living area: Yes

Heated: Yes  
Finished: Yes  
Enclosed: Yes  
Contiguous: Yes  
Permitted: Yes  
Wet space: No  
Addition: No  
Conversion: No

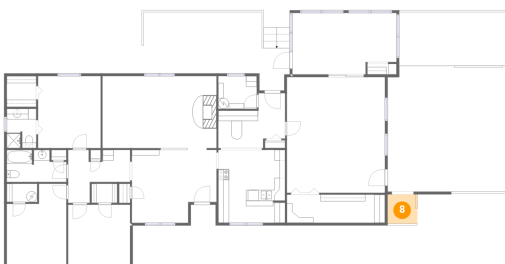
## 7 Floor 1 - Sunroom



Dimensions: 19'5" x 11'5"  
Area: 209 sq. ft  
Counted as living area: Yes

Heated: Yes  
Finished: Yes  
Enclosed: Yes  
Contiguous: Yes  
Permitted: Yes  
Wet space: No  
Addition: No  
Conversion: No

## 8 Floor 1 - Porch

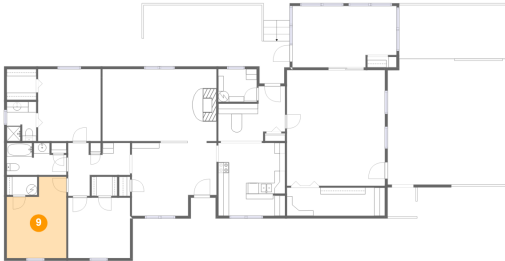


Dimensions: 5'7" x 5'5"  
Area: 30 sq. ft  
Counted as living area: No

Heated: No  
Finished: Yes  
Enclosed: No  
Contiguous: Yes  
Permitted: Yes  
Wet space: No  
Addition: No  
Conversion: No

# 855 County Rd 2054, Nacogdoches, TX, US

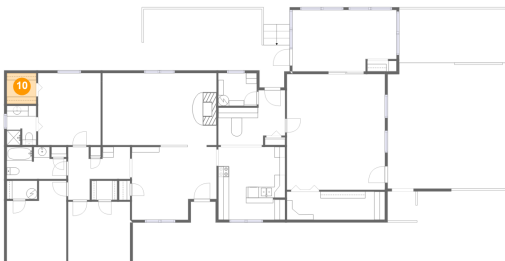
## 9 Floor 1 - Bedroom



**Dimensions:** 11'1" x 15'2"  
**Area:** 146 sq. ft  
**Counted as living area:** Yes

**Heated:** Yes  
**Finished:** Yes  
**Enclosed:** Yes  
**Contiguous:** Yes  
**Permitted:** Yes  
**Wet space:** No  
**Addition:** No  
**Conversion:** No

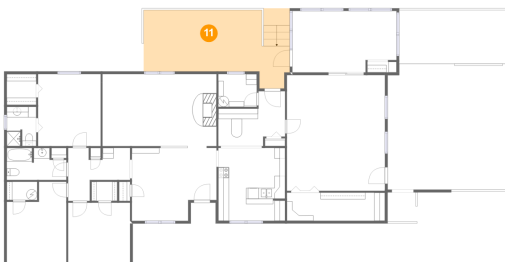
## 10 Floor 1 - W.I.C.



**Dimensions:** 5'5" x 5'8"  
**Area:** 31 sq. ft  
**Counted as living area:** Yes

**Heated:** Yes  
**Finished:** Yes  
**Enclosed:** Yes  
**Contiguous:** Yes  
**Permitted:** Yes  
**Wet space:** No  
**Addition:** No  
**Conversion:** No

## 11 Floor 1 - Covered Patio

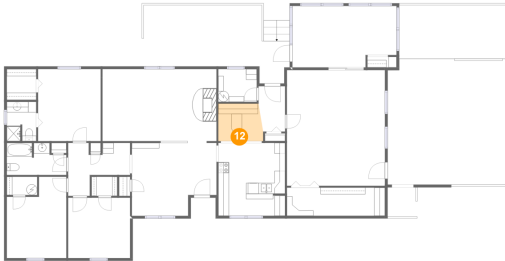


**Dimensions:** 27'2" x 14'11"  
**Area:** 325 sq. ft  
**Counted as living area:** No

**Heated:** No  
**Finished:** Yes  
**Enclosed:** No  
**Contiguous:** Yes  
**Permitted:** Yes  
**Wet space:** No  
**Addition:** No  
**Conversion:** No

# 855 County Rd 2054, Nacogdoches, TX, US

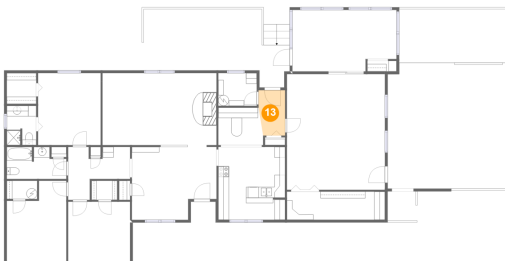
## 12 Floor 1 - Pantry



Dimensions: 8'4" x 7'0"  
Area: 56 sq. ft  
Counted as living area: Yes

Heated: Yes  
Finished: Yes  
Enclosed: Yes  
Contiguous: Yes  
Permitted: Yes  
Wet space: No  
Addition: No  
Conversion: No

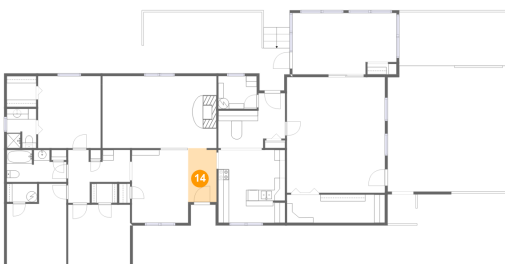
## 13 Floor 1 - Entry



Dimensions: 4'11" x 8'5"  
Area: 40 sq. ft  
Counted as living area: Yes

Heated: Yes  
Finished: Yes  
Enclosed: Yes  
Contiguous: Yes  
Permitted: Yes  
Wet space: No  
Addition: No  
Conversion: No

## 14 Floor 1 - Foyer



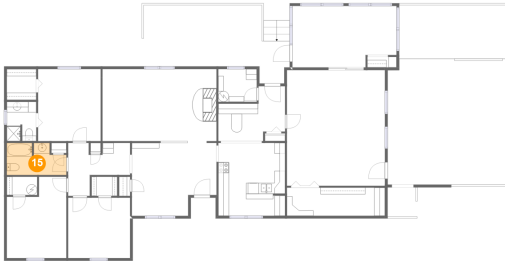
Dimensions: 5'3" x 10'0"  
Area: 52 sq. ft  
Counted as living area: Yes

Heated: Yes  
Finished: Yes  
Enclosed: Yes  
Contiguous: Yes  
Permitted: Yes  
Wet space: No  
Addition: No  
Conversion: No



# 855 County Rd 2054, Nacogdoches, TX, US

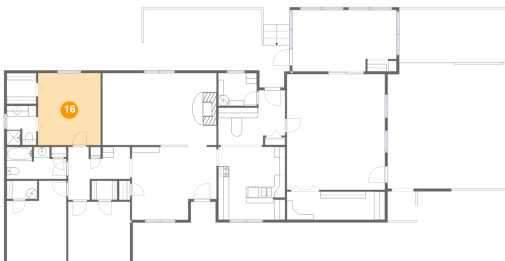
## 15 Floor 1 - Bath



Dimensions: 11'1" x 6'0"  
Area: 58 sq. ft  
Counted as living area: Yes

Heated: Yes  
Finished: Yes  
Enclosed: Yes  
Contiguous: Yes  
Permitted: Yes  
Wet space: Yes  
Addition: No  
Conversion: No

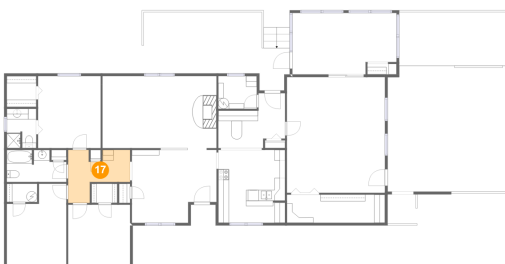
## 16 Floor 1 - Primary Bedroom



Dimensions: 11'8" x 13'5"  
Area: 157 sq. ft  
Counted as living area: Yes

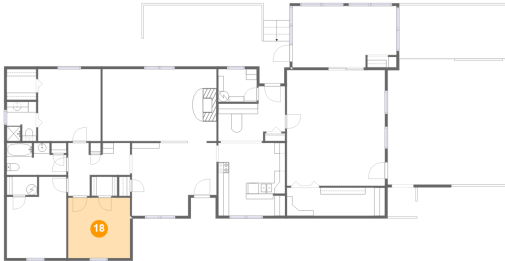
Heated: Yes  
Finished: Yes  
Enclosed: Yes  
Contiguous: Yes  
Permitted: Yes  
Wet space: No  
Addition: No  
Conversion: No

## 17 Floor 1 - Hall



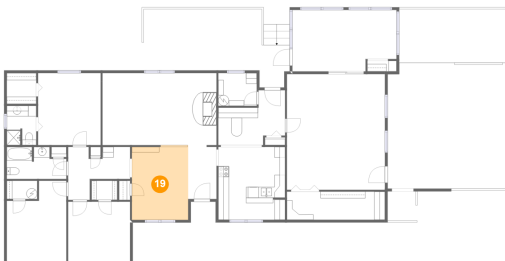
Dimensions: 11'7" x 9'10"  
Area: 79 sq. ft  
Counted as living area: Yes

Heated: Yes  
Finished: Yes  
Enclosed: Yes  
Contiguous: Yes  
Permitted: Yes  
Wet space: No  
Addition: No  
Conversion: No

**855 County Rd 2054, Nacogdoches, TX, US****18 Floor 1 - Bedroom**

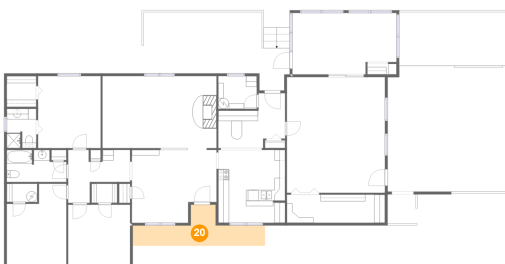
**Dimensions:** 11'7" x 11'3"  
**Area:** 130 sq. ft  
**Counted as living area:** Yes

**Heated:** Yes  
**Finished:** Yes  
**Enclosed:** Yes  
**Contiguous:** Yes  
**Permitted:** Yes  
**Wet space:** No  
**Addition:** No  
**Conversion:** No

**19 Floor 1 - Dining Area**

**Dimensions:** 10'6" x 13'7"  
**Area:** 144 sq. ft  
**Counted as living area:** Yes

**Heated:** Yes  
**Finished:** Yes  
**Enclosed:** Yes  
**Contiguous:** Yes  
**Permitted:** Yes  
**Wet space:** No  
**Addition:** No  
**Conversion:** No

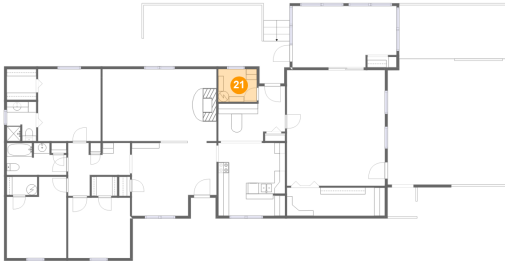
**20 Floor 1 - Porch**

**Dimensions:** 24'8" x 7'7"  
**Area:** 111 sq. ft  
**Counted as living area:** No

**Heated:** No  
**Finished:** Yes  
**Enclosed:** No  
**Contiguous:** Yes  
**Permitted:** Yes  
**Wet space:** No  
**Addition:** No  
**Conversion:** No

# 855 County Rd 2054, Nacogdoches, TX, US

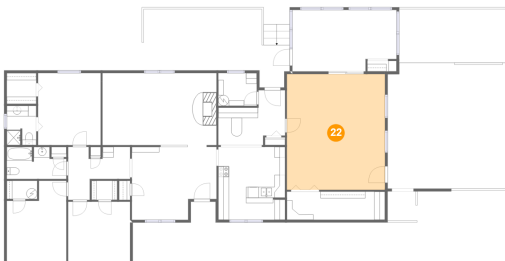
## 21 Floor 1 - Utility



**Dimensions:** 7'2" x 6'1"  
**Area:** 44 sq. ft  
**Counted as living area:** Yes

**Heated:** Yes  
**Finished:** Yes  
**Enclosed:** Yes  
**Contiguous:** Yes  
**Permitted:** Yes  
**Wet space:** No  
**Addition:** No  
**Conversion:** No

## 22 Floor 1 - Family Room



**Dimensions:** 18'3" x 21'6"  
**Area:** 394 sq. ft  
**Counted as living area:** Yes

**Heated:** Yes  
**Finished:** Yes  
**Enclosed:** Yes  
**Contiguous:** Yes  
**Permitted:** Yes  
**Wet space:** No  
**Addition:** No  
**Conversion:** No