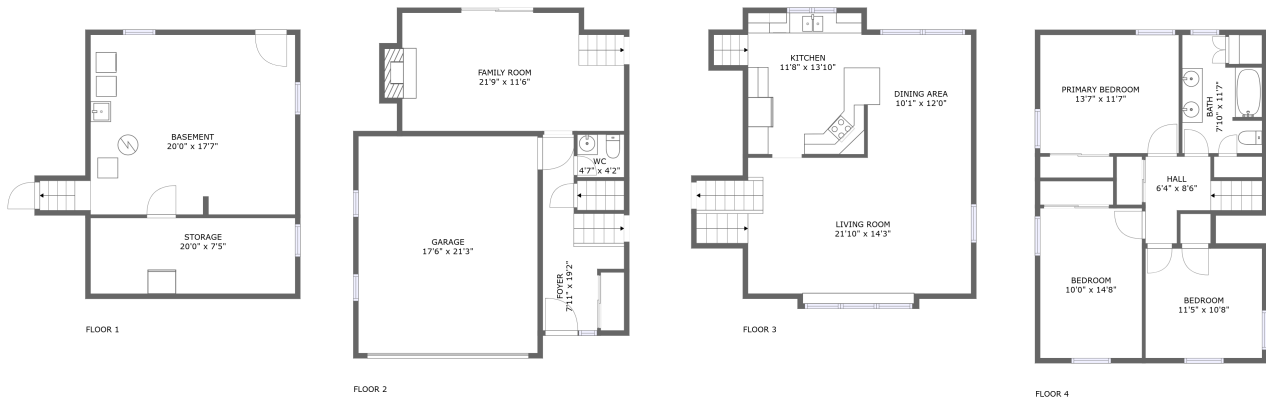


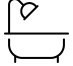



300 Charlotte St, Newark, New York, United States

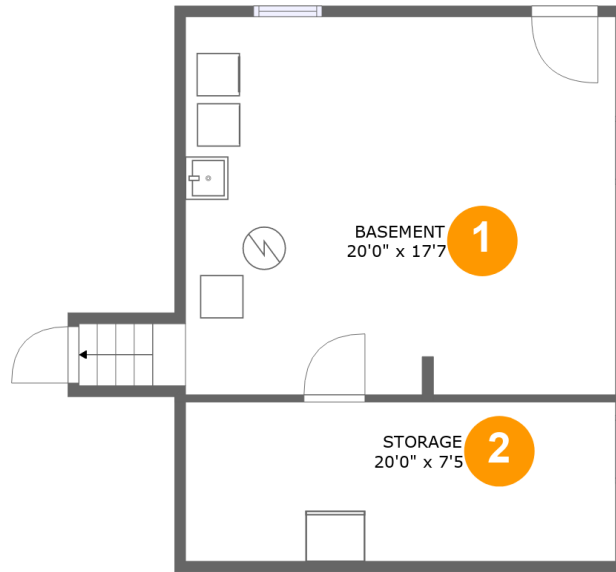


Property Summary

 **1** garages  **3** bedrooms  **1** bathrooms  **1** half baths

 **4** floors  **1,868** Gross Living Area sqft  **2,846** total sqft

300 Charlotte St, Newark, New York, United States



Room Dimensions

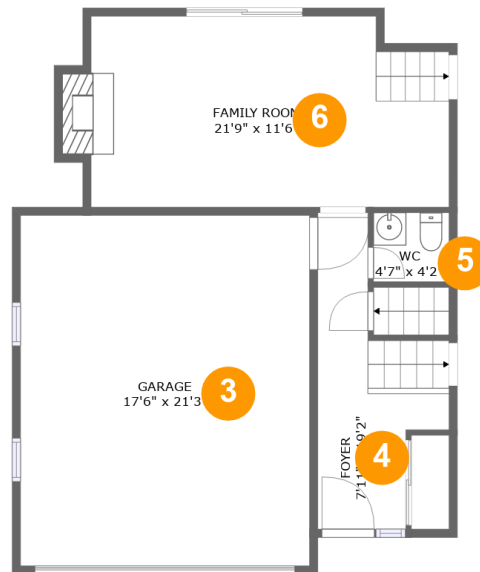
Floor 1

Total sqft: 573

Living area: 0

#	Room name	Dimensions	Area (sqft)	Counted as Living Area
1	Basement	20'0" x 17'7"	366 sq. ft	No
2	Storage	20'0" x 7'5"	148 sq. ft	No

300 Charlotte St, Newark, New York, United States

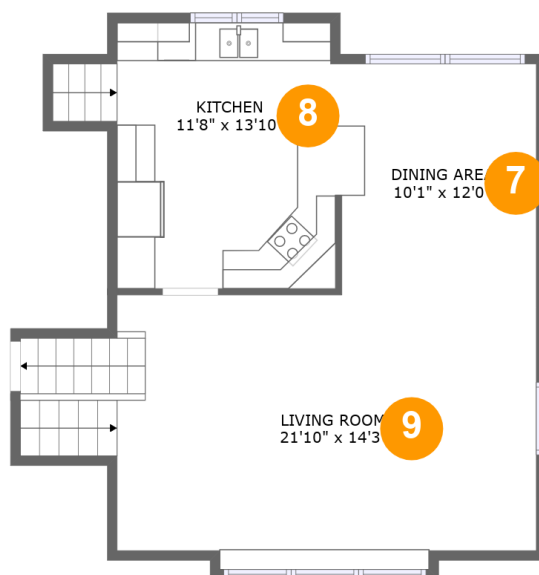


Room Dimensions

Floor 2**Total sqft: 856****Living area: 451**

#	Room name	Dimensions	Area (sqft)	Counted as Living Area
3	Garage	17'6" x 21'3"	373 sq. ft	No
4	Foyer	7'11" x 19'2"	99 sq. ft	Yes
5	Wc	4'7" x 4'2"	19 sq. ft	Yes
6	Family Room	21'9" x 11'6"	250 sq. ft	Yes

300 Charlotte St, Newark, New York, United States



Room Dimensions

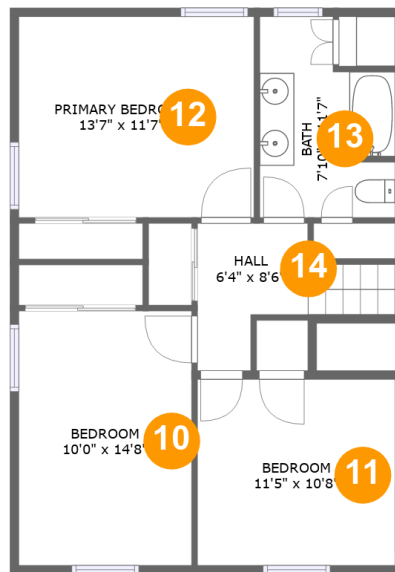
Floor 3

Total sqft: 689

Living area: 689

#	Room name	Dimensions	Area (sqft)	Counted as Living Area
7	Dining Area	10'1" x 12'0"	122 sq. ft	Yes
8	Kitchen	11'8" x 13'10"	169 sq. ft	Yes
9	Living Room	21'10" x 14'3"	332 sq. ft	Yes

300 Charlotte St, Newark, New York, United States



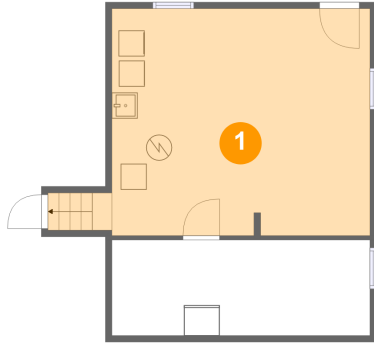
Room Dimensions

Floor 4**Total sqft: 728****Living area: 728**

#	Room name	Dimensions	Area (sqft)	Counted as Living Area
10	Bedroom	10'0" x 14'8"	146 sq. ft	Yes
11	Bedroom	11'5" x 10'8"	122 sq. ft	Yes
12	Primary Bedroom	13'7" x 11'7"	157 sq. ft	Yes
13	Bath	7'10" x 11'7"	78 sq. ft	Yes
14	Hall	6'4" x 8'6"	58 sq. ft	Yes

300 Charlotte St, Newark, New York, United States

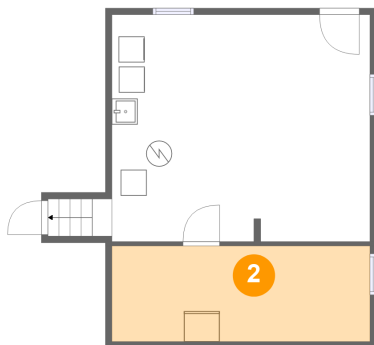
1 Floor 1 - Basement



Dimensions: 20'0" x 17'7"
Area: 366 sq. ft
Counted as Living Area: No

Heated: Yes
Finished: No
Enclosed: Yes
Contiguous: Yes
Permitted: Yes
Wet Space: No
Addition: No
Conversion: No

2 Floor 1 - Storage

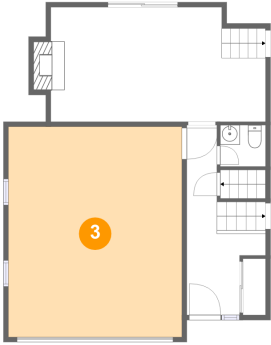


Dimensions: 20'0" x 7'5"
Area: 148 sq. ft
Counted as Living Area: No

Heated: No
Finished: No
Enclosed: No
Contiguous: Yes
Permitted: Yes
Wet Space: No
Addition: No
Conversion: No

300 Charlotte St, Newark, New York, United States

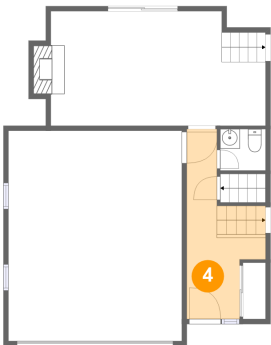
3 Floor 2 - Garage



Dimensions: 17'6" x 21'3"
Area: 373 sq. ft
Counted as Living Area: No

Heated: No
Finished: No
Enclosed: Yes
Contiguous: Yes
Permitted: Yes
Wet Space: No
Addition: No
Conversion: No

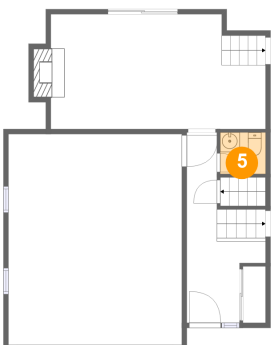
4 Floor 2 - Foyer



Dimensions: 7'11" x 19'2"
Area: 99 sq. ft
Counted as Living Area: Yes

Heated: Yes
Finished: Yes
Enclosed: Yes
Contiguous: Yes
Permitted: Yes
Wet Space: No
Addition: No
Conversion: No

5 Floor 2 - Wc

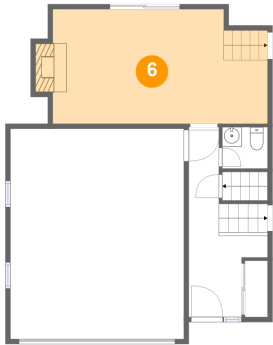


Dimensions: 4'7" x 4'2"
Area: 19 sq. ft
Counted as Living Area: Yes

Heated: Yes
Finished: Yes
Enclosed: Yes
Contiguous: Yes
Permitted: Yes
Wet Space: Yes
Addition: No
Conversion: No

300 Charlotte St, Newark, New York, United States

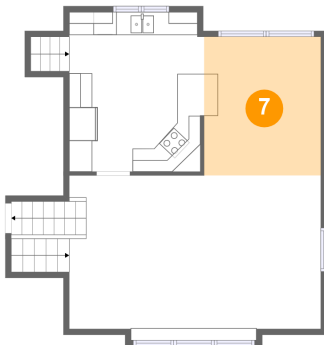
6 Floor 2 - Family Room



Dimensions: 21'9" x 11'6"
Area: 250 sq. ft
Counted as Living Area:
Yes

Heated: Yes
Finished: Yes
Enclosed: Yes
Contiguous:
Yes
Permitted: Yes
Wet Space: No
Addition: No
Conversion: No

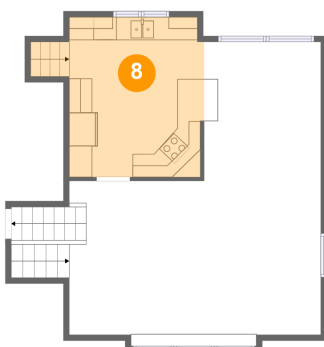
7 Floor 3 - Dining Area



Dimensions: 10'1" x 12'0"
Area: 122 sq. ft
Counted as Living Area:
Yes

Heated: Yes
Finished: Yes
Enclosed: Yes
Contiguous:
Yes
Permitted: Yes
Wet Space: No
Addition: No
Conversion: No

8 Floor 3 - Kitchen



Dimensions: 11'8" x 13'10"
Area: 169 sq. ft
Counted as Living Area:
Yes

Heated: Yes
Finished: Yes
Enclosed: Yes
Contiguous:
Yes
Permitted: Yes
Wet Space: No
Addition: No
Conversion: No

300 Charlotte St, Newark, New York, United States

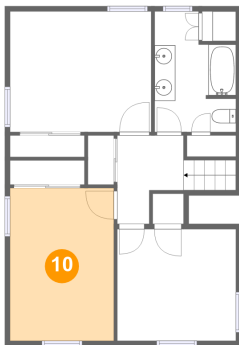
9 Floor 3 - Living Room



Dimensions: 21'10" x 14'3"
Area: 332 sq. ft
Counted as Living Area:
Yes

Heated: Yes
Finished: Yes
Enclosed: Yes
Contiguous:
Yes
Permitted: Yes
Wet Space: No
Addition: No
Conversion: No

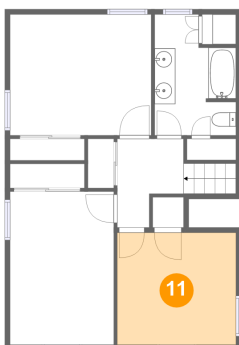
10 Floor 4 - Bedroom



Dimensions: 10'0" x 14'8"
Area: 146 sq. ft
Counted as Living Area:
Yes

Heated: Yes
Finished: Yes
Enclosed: Yes
Contiguous:
Yes
Permitted: Yes
Wet Space: No
Addition: No
Conversion: No

11 Floor 4 - Bedroom

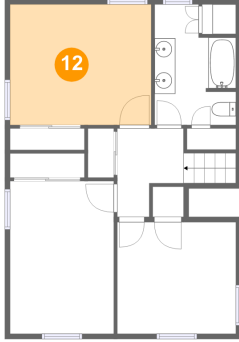


Dimensions: 11'5" x 10'8"
Area: 122 sq. ft
Counted as Living Area:
Yes

Heated: Yes
Finished: Yes
Enclosed: Yes
Contiguous:
Yes
Permitted: Yes
Wet Space: No
Addition: No
Conversion: No

300 Charlotte St, Newark, New York, United States

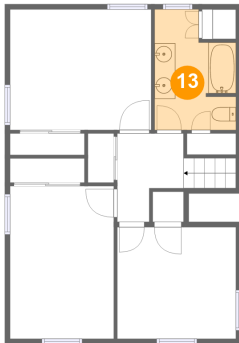
12 Floor 4 - Primary Bedroom



Dimensions: 13'7" x 11'7"
Area: 157 sq. ft
Counted as Living Area:
Yes

Heated: Yes
Finished: Yes
Enclosed: Yes
Contiguous:
Yes
Permitted: Yes
Wet Space: No
Addition: No
Conversion: No

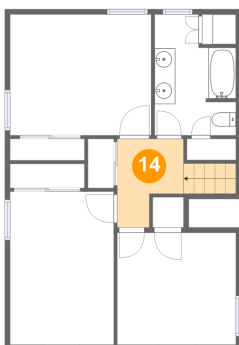
13 Floor 4 - Bath



Dimensions: 7'10" x 11'7"
Area: 78 sq. ft
Counted as Living Area:
Yes

Heated: Yes
Finished: Yes
Enclosed: Yes
Contiguous:
Yes
Permitted: Yes
Wet Space: Yes
Addition: No
Conversion: No

14 Floor 4 - Hall



Dimensions: 6'4" x 8'6"
Area: 58 sq. ft
Counted as Living Area:
Yes

Heated: Yes
Finished: Yes
Enclosed: Yes
Contiguous:
Yes
Permitted: Yes
Wet Space: No
Addition: No
Conversion: No