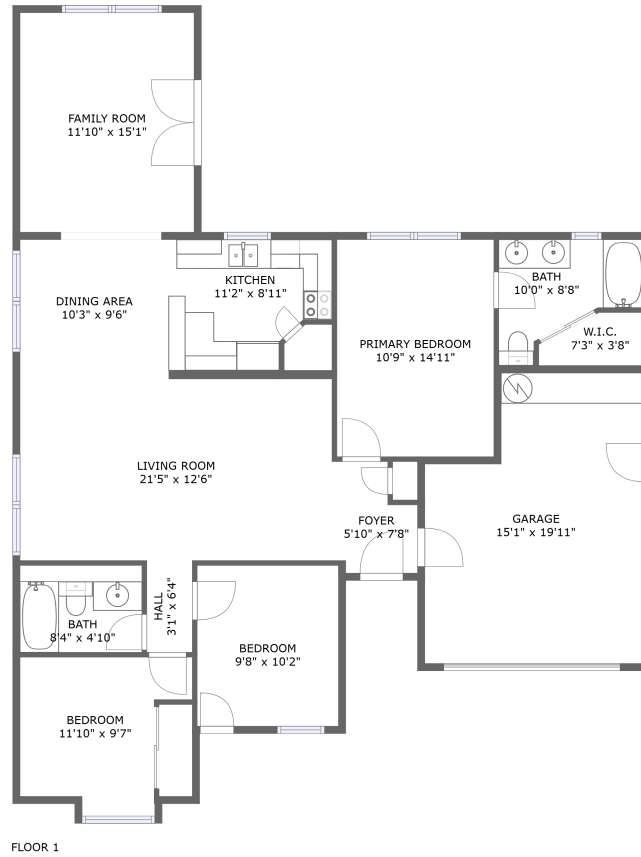


209 Shoals Point Trail, Madison, Madison County, Alabama, United States, 35757



Property Summary



1 floors



3 bedrooms



2 bathrooms



1,658 total sqft

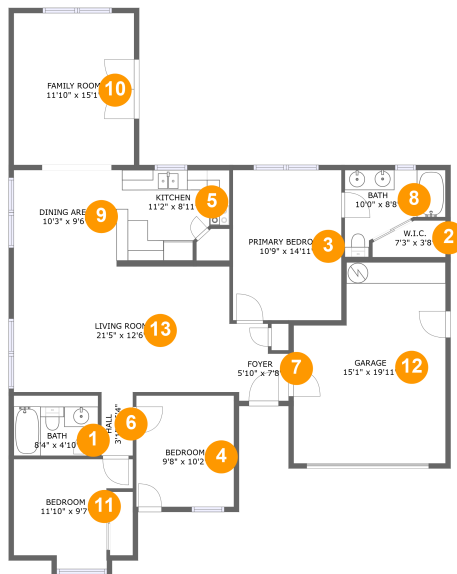


1 garages



1,361 Gross Living Area sqft

209 Shoals Point Trail, Madison, Madison County, Alabama, United States, 35757



Room Dimensions

Floor 1

Total sqft: 1658

Living area: 1361

#	Room name	Dimensions	Area (sqft)	Counted as Living Area
1	Bath	8'4" x 4'10"	50 sq. ft	Yes
2	W.i.c.	7'3" x 3'8"	22 sq. ft	Yes
3	Primary Bedroom	10'9" x 14'11"	160 sq. ft	Yes
4	Bedroom	9'8" x 10'2"	107 sq. ft	Yes
5	Kitchen	11'2" x 8'11"	89 sq. ft	Yes
6	Hall	3'1" x 6'4"	20 sq. ft	Yes
7	Foyer	5'10" x 7'8"	38 sq. ft	Yes
8	Bath	10'0" x 8'8"	61 sq. ft	Yes
9	Dining Area	10'3" x 9'6"	98 sq. ft	Yes
10	Family Room	11'10" x 15'1"	180 sq. ft	Yes
11	Bedroom	11'10" x 9'7"	96 sq. ft	Yes

Scan captured on Mon, 20 May 2024 18:28:40 GMT

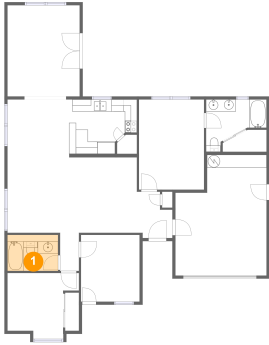
Information is calculated by CubiCasa technology; deemed highly reliable but not guaranteed.

**209 Shoals Point Trail, Madison, Madison
County, Alabama, United States, 35757**

#	Room name	Dimensions	Area (sqft)	Counted as Living Area
12	Garage	15'1" x 19'11"	268 sq. ft	No
13	Living Room	21'5" x 12'6"	267 sq. ft	Yes

209 Shoals Point Trail, Madison, Madison County, Alabama, United States, 35757

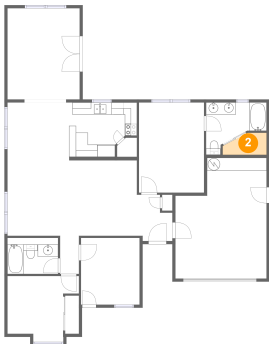
1 Floor 1 - Bath



Dimensions: 8'4" x 4'10"
Area: 50 sq. ft
Counted as Living Area:
Yes

Heated: Yes
Finished: Yes
Enclosed: Yes
Contiguous:
Yes
Permitted: Yes
Wet Space: Yes
Addition: No
Conversion: No

2 Floor 1 - W.i.c.

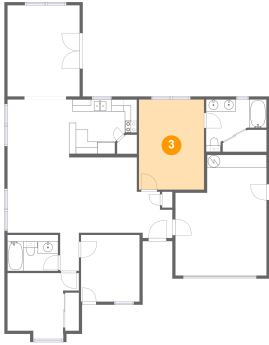


Dimensions: 7'3" x 3'8"
Area: 22 sq. ft
Counted as Living Area:
Yes

Heated: Yes
Finished: Yes
Enclosed: Yes
Contiguous:
Yes
Permitted: Yes
Wet Space: No
Addition: No
Conversion: No

209 Shoals Point Trail, Madison, Madison County, Alabama, United States, 35757

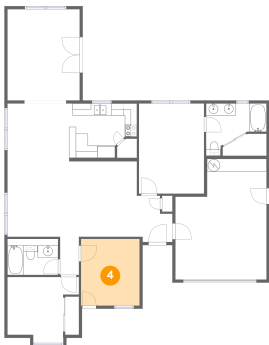
3 Floor 1 - Primary Bedroom



Dimensions: 10'9" x 14'11"
Area: 160 sq. ft
Counted as Living Area:
Yes

Heated: Yes
Finished: Yes
Enclosed: Yes
Contiguous:
Yes
Permitted: Yes
Wet Space: No
Addition: No
Conversion: No

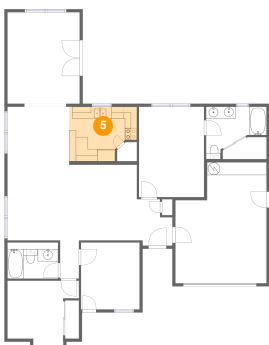
4 Floor 1 - Bedroom



Dimensions: 9'8" x 10'2"
Area: 107 sq. ft
Counted as Living Area:
Yes

Heated: Yes
Finished: Yes
Enclosed: Yes
Contiguous:
Yes
Permitted: Yes
Wet Space: No
Addition: No
Conversion: No

5 Floor 1 - Kitchen



Dimensions: 11'2" x 8'11"
Area: 89 sq. ft
Counted as Living Area:
Yes

Heated: Yes
Finished: Yes
Enclosed: Yes
Contiguous:
Yes
Permitted: Yes
Wet Space: No
Addition: No
Conversion: No

209 Shoals Point Trail, Madison, Madison County, Alabama, United States, 35757

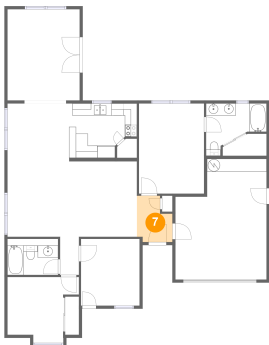
6 Floor 1 - Hall



Dimensions: 3'1" x 6'4"
Area: 20 sq. ft
Counted as Living Area:
Yes

Heated: Yes
Finished: Yes
Enclosed: Yes
Contiguous:
Yes
Permitted: Yes
Wet Space: No
Addition: No
Conversion: No

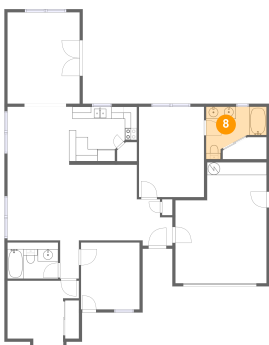
7 Floor 1 - Foyer



Dimensions: 5'10" x 7'8"
Area: 38 sq. ft
Counted as Living Area:
Yes

Heated: Yes
Finished: Yes
Enclosed: Yes
Contiguous:
Yes
Permitted: Yes
Wet Space: No
Addition: No
Conversion: No

8 Floor 1 - Bath

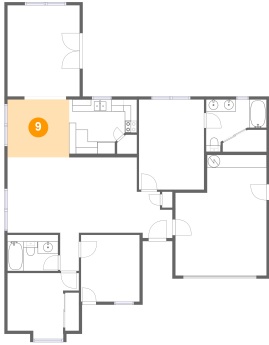


Dimensions: 10'0" x 8'8"
Area: 61 sq. ft
Counted as Living Area:
Yes

Heated: Yes
Finished: Yes
Enclosed: Yes
Contiguous:
Yes
Permitted: Yes
Wet Space: Yes
Addition: No
Conversion: No

209 Shoals Point Trail, Madison, Madison County, Alabama, United States, 35757

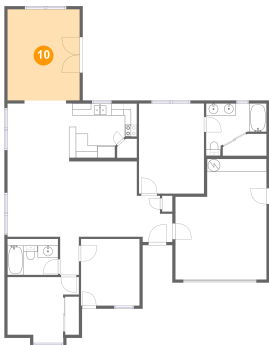
9 Floor 1 - Dining Area



Dimensions: 10'3" x 9'6"
Area: 98 sq. ft
Counted as Living Area:
Yes

Heated: Yes
Finished: Yes
Enclosed: Yes
Contiguous:
Yes
Permitted: Yes
Wet Space: No
Addition: No
Conversion: No

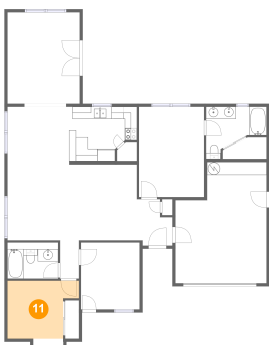
10 Floor 1 - Family Room



Dimensions: 11'10" x 15'1"
Area: 180 sq. ft
Counted as Living Area:
Yes

Heated: Yes
Finished: Yes
Enclosed: Yes
Contiguous:
Yes
Permitted: Yes
Wet Space: No
Addition: No
Conversion: No

11 Floor 1 - Bedroom

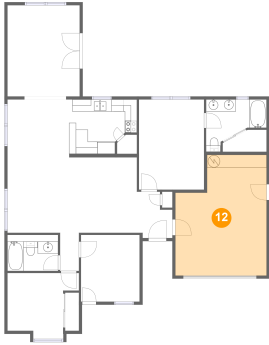


Dimensions: 11'10" x 9'7"
Area: 96 sq. ft
Counted as Living Area:
Yes

Heated: Yes
Finished: Yes
Enclosed: Yes
Contiguous:
Yes
Permitted: Yes
Wet Space: No
Addition: No
Conversion: No

209 Shoals Point Trail, Madison, Madison County, Alabama, United States, 35757

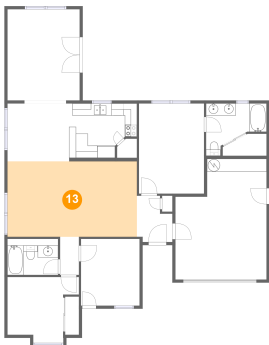
12 Floor 1 - Garage



Dimensions: 15'1" x 19'11"
Area: 268 sq. ft
Counted as Living Area: No

Heated: No
Finished: No
Enclosed: Yes
Contiguous: Yes
Permitted: Yes
Wet Space: No
Addition: No
Conversion: No

13 Floor 1 - Living Room



Dimensions: 21'5" x 12'6"
Area: 267 sq. ft
Counted as Living Area:
Yes

Heated: Yes
Finished: Yes
Enclosed: Yes
Contiguous:
Yes
Permitted: Yes
Wet Space: No
Addition: No
Conversion: No