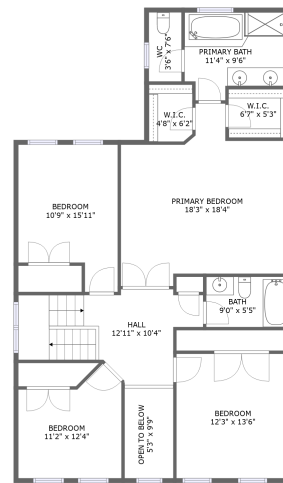
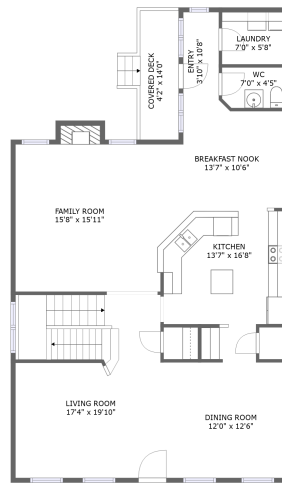
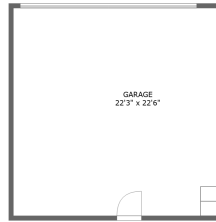



23418 Tailor Shop Place, Clarksburg, Maryland 20871, United States



Property summary


 **1** Garages

 **5** Bedrooms

 **3** Bathrooms

 **1** Half baths

 **3** Floors

 **3,528**
Gross living
area sqft

 **4,569**
Total sqft

23418 Tailor Shop Place, Clarksburg, Maryland 20871, United States



Room dimensions

Floor 1

Total sqft: 1296 Living area: 930

#		Dimensions	sqft	Counted as living area
1	Bath	10'0" x 5'2"	51 sq. ft	Yes
2	Recreation Room	29'4" x 26'9"	624 sq. ft	Yes
3	Electrical Room & Storage	29'4" x 16'3"	339 sq. ft	No
4	Bedroom	11'2" x 14'4"	154 sq. ft	Yes

23418 Tailor Shop Place, Clarksburg, Maryland 20871, United States



Room dimensions

Floor 2

Total sqft: 1918 Living area: 1297

#		Dimensions	sqft	Counted as living area
5	Family Room	15'8" x 15'11"	259 sq. ft	Yes
6	Kitchen	13'7" x 16'8"	192 sq. ft	Yes
7	Covered Deck	4'2" x 14'0"	66 sq. ft	No
8	Dining Room	12'0" x 12'6"	150 sq. ft	Yes
9	Living Room	17'4" x 19'10"	328 sq. ft	Yes
10	Breakfast Nook	13'7" x 10'6"	134 sq. ft	Yes
11	Laundry	7'0" x 5'8"	39 sq. ft	Yes
12	WC	7'0" x 4'5"	30 sq. ft	Yes
13	Garage	22'3" x 22'6"	499 sq. ft	No
14	Entry	3'10" x 10'8"	42 sq. ft	Yes

23418 Tailor Shop Place, Clarksburg, Maryland 20871, United States



Room dimensions

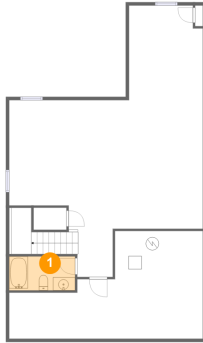
Floor 3

Total sqft: 1355 Living area: 1301

#		Dimensions	sqft	Counted as living area
15	Bedroom	12'3" x 13'6"	164 sq. ft	Yes
16	WC	3'6" x 7'6"	26 sq. ft	Yes
17	Hall	12'11" x 10'4"	151 sq. ft	Yes
18	Bedroom	11'2" x 12'4"	114 sq. ft	Yes
19	W.I.C.	4'8" x 6'2"	29 sq. ft	Yes
20	Primary Bath	11'4" x 9'6"	95 sq. ft	Yes
21	Bath	9'0" x 5'5"	49 sq. ft	Yes
22	Bedroom	10'9" x 15'11"	148 sq. ft	Yes
23	Open To Below	5'3" x 9'9"	51 sq. ft	No
24	Primary Bedroom	18'3" x 18'4"	280 sq. ft	Yes
25	W.I.C.	6'7" x 5'3"	35 sq. ft	Yes

**23418 Tailor Shop Place, Clarksburg, Maryland
20871, United States**

1 Floor 1 - Bath



Dimensions: 10'0" x 5'2"
Area: 51 sq. ft
Counted as living area: Yes

Heated: Yes
Finished: Yes
Enclosed: Yes
Contiguous: Yes
Permitted: Yes
Wet space: Yes
Addition: No
Conversion: No

2 Floor 1 - Recreation Room



Dimensions: 29'4" x 26'9"
Area: 624 sq. ft
Counted as living area: Yes

Heated: Yes
Finished: Yes
Enclosed: Yes
Contiguous: Yes
Permitted: Yes
Wet space: No
Addition: No
Conversion: No

**23418 Tailor Shop Place, Clarksburg, Maryland
20871, United States**

3 Floor 1 - Electrical Room & Storage



Dimensions: 29'4" x 16'3"
Area: 339 sq. ft
Counted as living area: No

Heated: No
Finished: No
Enclosed: Yes
Contiguous: Yes
Permitted: Yes
Wet space: No
Addition: No
Conversion: No

4 Floor 1 - Bedroom



Dimensions: 11'2" x 14'4"
Area: 154 sq. ft
Counted as living area: Yes

Heated: Yes
Finished: Yes
Enclosed: Yes
Contiguous: Yes
Permitted: Yes
Wet space: No
Addition: No
Conversion: No

5 Floor 2 - Family Room



Dimensions: 15'8" x 15'11"
Area: 259 sq. ft
Counted as living area: Yes

Heated: Yes
Finished: Yes
Enclosed: Yes
Contiguous: Yes
Permitted: Yes
Wet space: No
Addition: No
Conversion: No

23418 Tailor Shop Place, Clarksburg, Maryland 20871, United States

6 Floor 2 - Kitchen



Dimensions: 13'7" x 16'8"
Area: 192 sq. ft
Counted as living area: Yes

Heated: Yes
Finished: Yes
Enclosed: Yes
Contiguous: Yes
Permitted: Yes
Wet space: No
Addition: No
Conversion: No

7 Floor 2 - Covered Deck



Dimensions: 4'2" x 14'0"
Area: 66 sq. ft
Counted as living area: No

Heated: No
Finished: Yes
Enclosed: No
Contiguous: Yes
Permitted: Yes
Wet space: No
Addition: No
Conversion: No

8 Floor 2 - Dining Room



Dimensions: 12'0" x 12'6"
Area: 150 sq. ft
Counted as living area: Yes

Heated: Yes
Finished: Yes
Enclosed: Yes
Contiguous: Yes
Permitted: Yes
Wet space: No
Addition: No
Conversion: No

**23418 Tailor Shop Place, Clarksburg, Maryland
20871, United States**

9 Floor 2 - Living Room



Dimensions: 17'4" x 19'10"
Area: 328 sq. ft
Counted as living area: Yes

Heated: Yes
Finished: Yes
Enclosed: Yes
Contiguous: Yes
Permitted: Yes
Wet space: No
Addition: No
Conversion: No

10 Floor 2 - Breakfast Nook



Dimensions: 13'7" x 10'6"
Area: 134 sq. ft
Counted as living area: Yes

Heated: Yes
Finished: Yes
Enclosed: Yes
Contiguous: Yes
Permitted: Yes
Wet space: No
Addition: No
Conversion: No

11 Floor 2 - Laundry



Dimensions: 7'0" x 5'8"
Area: 39 sq. ft
Counted as living area: Yes

Heated: Yes
Finished: Yes
Enclosed: Yes
Contiguous: Yes
Permitted: Yes
Wet space: No
Addition: No
Conversion: No

**23418 Tailor Shop Place, Clarksburg, Maryland
20871, United States**

12 Floor 2 - WC



Dimensions: 7'0" x 4'5"
Area: 30 sq. ft
Counted as living area: Yes

Heated: Yes
Finished: Yes
Enclosed: Yes
Contiguous: Yes
Permitted: Yes
Wet space: Yes
Addition: No
Conversion: No

13 Floor 2 - Garage



Dimensions: 22'3" x 22'6"
Area: 499 sq. ft
Counted as living area: No

Heated: No
Finished: No
Enclosed: Yes
Contiguous: Yes
Permitted: Yes
Wet space: No
Addition: No
Conversion: No

14 Floor 2 - Entry



Dimensions: 3'10" x 10'8"
Area: 42 sq. ft
Counted as living area: Yes

Heated: Yes
Finished: Yes
Enclosed: Yes
Contiguous: Yes
Permitted: Yes
Wet space: No
Addition: No
Conversion: No

23418 Tailor Shop Place, Clarksburg, Maryland 20871, United States

15 Floor 3 - Bedroom



Dimensions: 12'3" x 13'6"
Area: 164 sq. ft
Counted as living area: Yes

Heated: Yes
Finished: Yes
Enclosed: Yes
Contiguous: Yes
Permitted: Yes
Wet space: No
Addition: No
Conversion: No

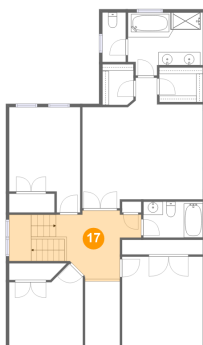
16 Floor 3 - WC



Dimensions: 3'6" x 7'6"
Area: 26 sq. ft
Counted as living area: Yes

Heated: Yes
Finished: Yes
Enclosed: Yes
Contiguous: Yes
Permitted: Yes
Wet space: Yes
Addition: No
Conversion: No

17 Floor 3 - Hall



Dimensions: 12'11" x 10'4"
Area: 151 sq. ft
Counted as living area: Yes

Heated: Yes
Finished: Yes
Enclosed: Yes
Contiguous: Yes
Permitted: Yes
Wet space: No
Addition: No
Conversion: No

**23418 Tailor Shop Place, Clarksburg, Maryland
20871, United States**

18 Floor 3 - Bedroom



Dimensions: 11'2" x 12'4"
Area: 114 sq. ft
Counted as living area: Yes

Heated: Yes
Finished: Yes
Enclosed: Yes
Contiguous: Yes
Permitted: Yes
Wet space: No
Addition: No
Conversion: No

19 Floor 3 - W.I.C.



Dimensions: 4'8" x 6'2"
Area: 29 sq. ft
Counted as living area: Yes

Heated: Yes
Finished: Yes
Enclosed: Yes
Contiguous: Yes
Permitted: Yes
Wet space: No
Addition: No
Conversion: No

20 Floor 3 - Primary Bath



Dimensions: 11'4" x 9'6"
Area: 95 sq. ft
Counted as living area: Yes

Heated: Yes
Finished: Yes
Enclosed: Yes
Contiguous: Yes
Permitted: Yes
Wet space: Yes
Addition: No
Conversion: No

**23418 Tailor Shop Place, Clarksburg, Maryland
20871, United States**

21 Floor 3 - Bath



Dimensions: 9'0" x 5'5"
Area: 49 sq. ft
Counted as living area: Yes

Heated: Yes
Finished: Yes
Enclosed: Yes
Contiguous: Yes
Permitted: Yes
Wet space: Yes
Addition: No
Conversion: No

22 Floor 3 - Bedroom



Dimensions: 10'9" x 15'11"
Area: 148 sq. ft
Counted as living area: Yes

Heated: Yes
Finished: Yes
Enclosed: Yes
Contiguous: Yes
Permitted: Yes
Wet space: No
Addition: No
Conversion: No

23 Floor 3 - Open To Below



Dimensions: 5'3" x 9'9"
Area: 51 sq. ft
Counted as living area: No

Heated: No
Finished: No
Enclosed: No
Contiguous: Yes
Permitted: No
Wet space: No
Addition: No
Conversion: No

**23418 Tailor Shop Place, Clarksburg, Maryland
20871, United States**

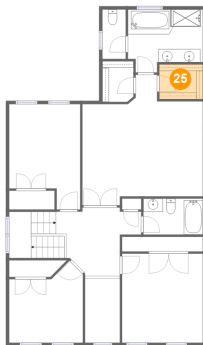
24 Floor 3 - Primary Bedroom



Dimensions: 18'3" x 18'4"
Area: 280 sq. ft
Counted as living area: Yes

Heated: Yes
Finished: Yes
Enclosed: Yes
Contiguous: Yes
Permitted: Yes
Wet space: No
Addition: No
Conversion: No

25 Floor 3 - W.I.C.



Dimensions: 6'7" x 5'3"
Area: 35 sq. ft
Counted as living area: Yes

Heated: Yes
Finished: Yes
Enclosed: Yes
Contiguous: Yes
Permitted: Yes
Wet space: No
Addition: No
Conversion: No